

PROYECTO de

*un edificio para
emplazarse en un
solar propiedad de*

D^{ña} ENCARNACION HERNANDEZ

TABERNES
DE *Valldigna*

Escala 1:100.
Valencia + Mayo 1942
El Arquitecto

Josep M. Gual
ARQUITECTO

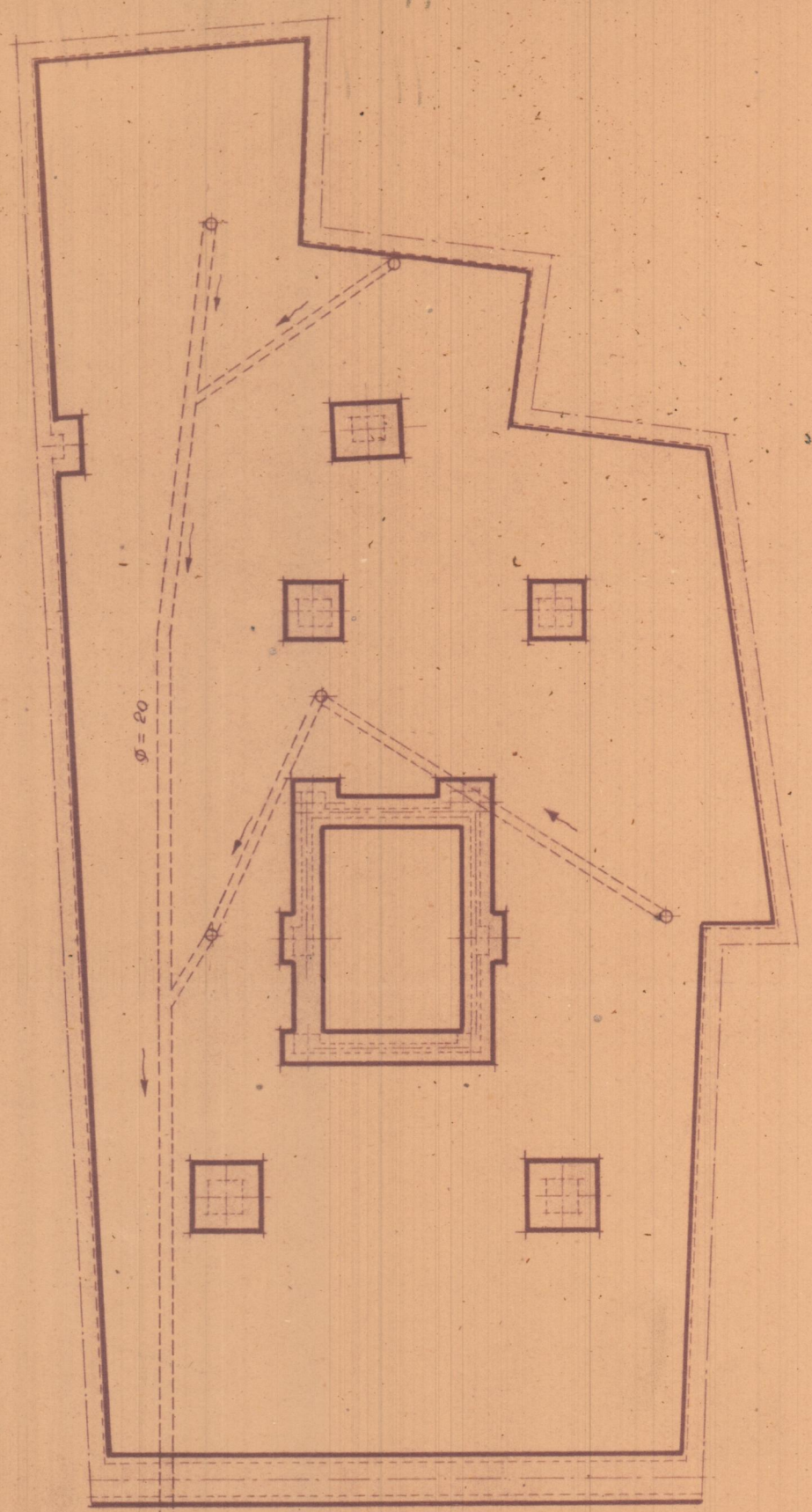
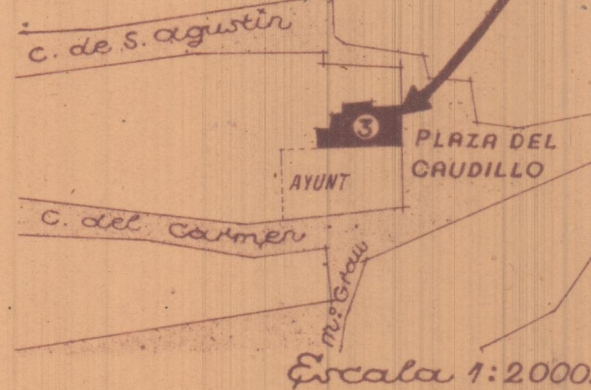
REGISTRADO EN

26 MAY 1942

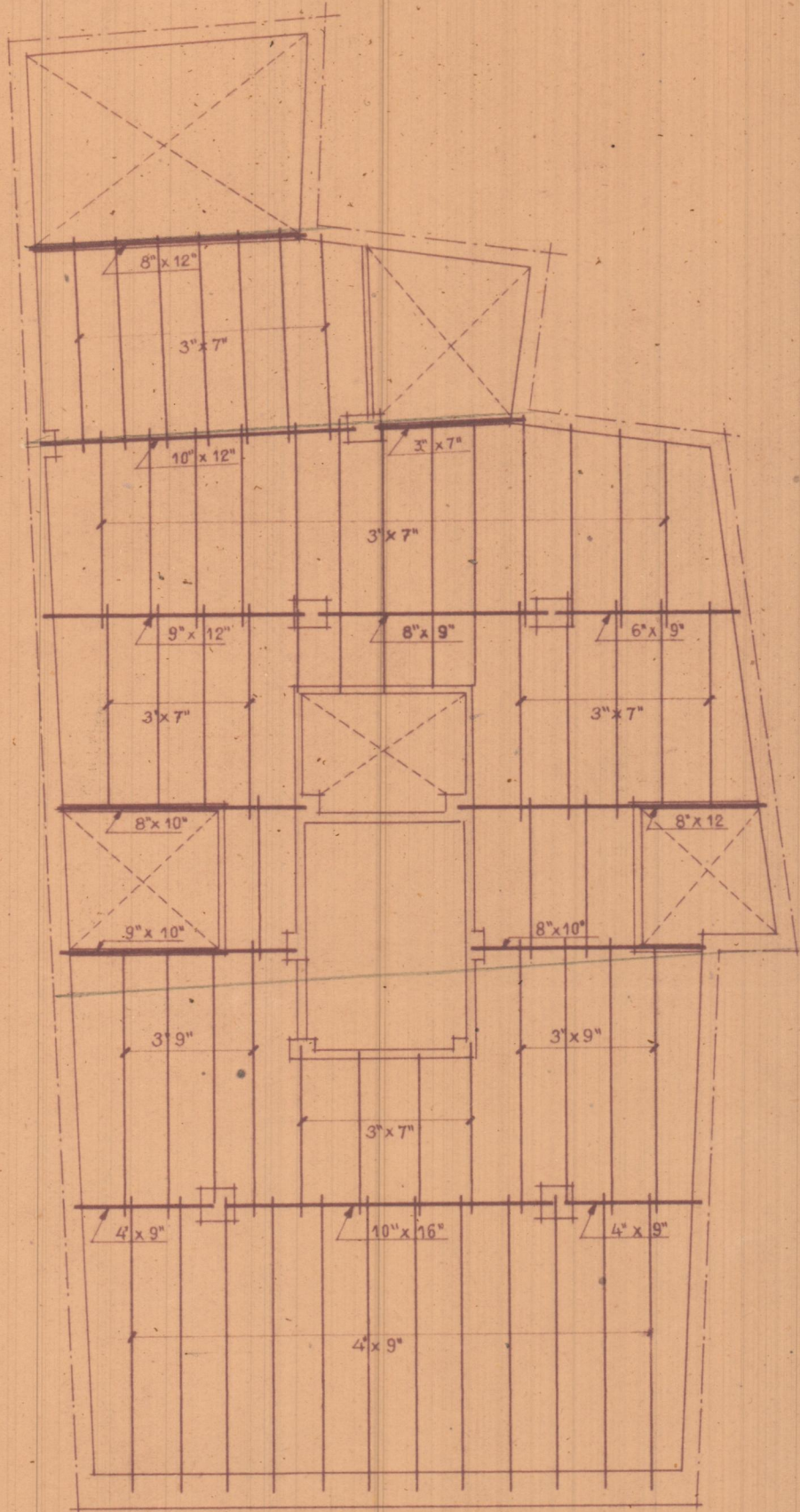
EL SECRETARIO

Vicent Benet

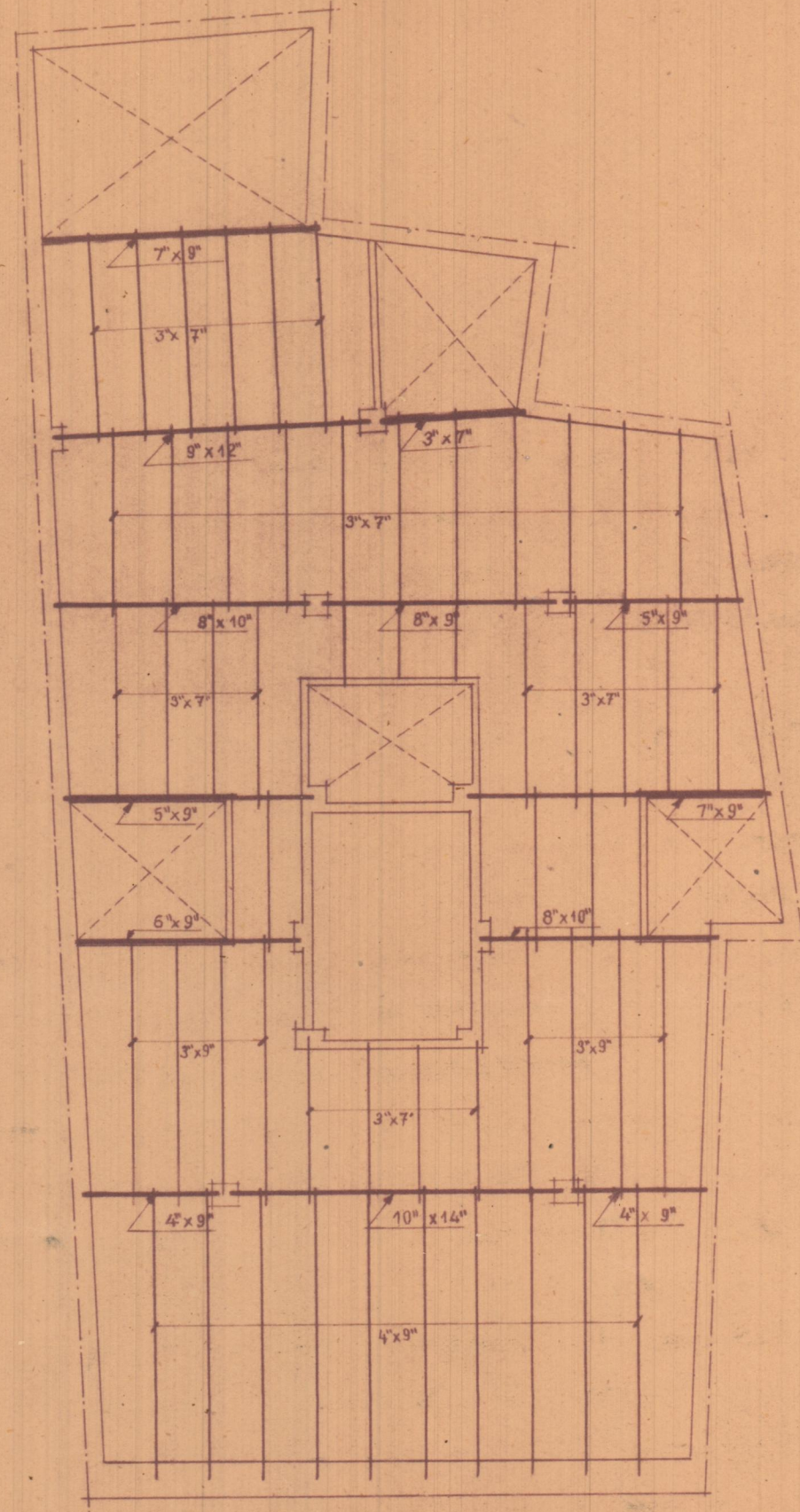
Emplazamiento



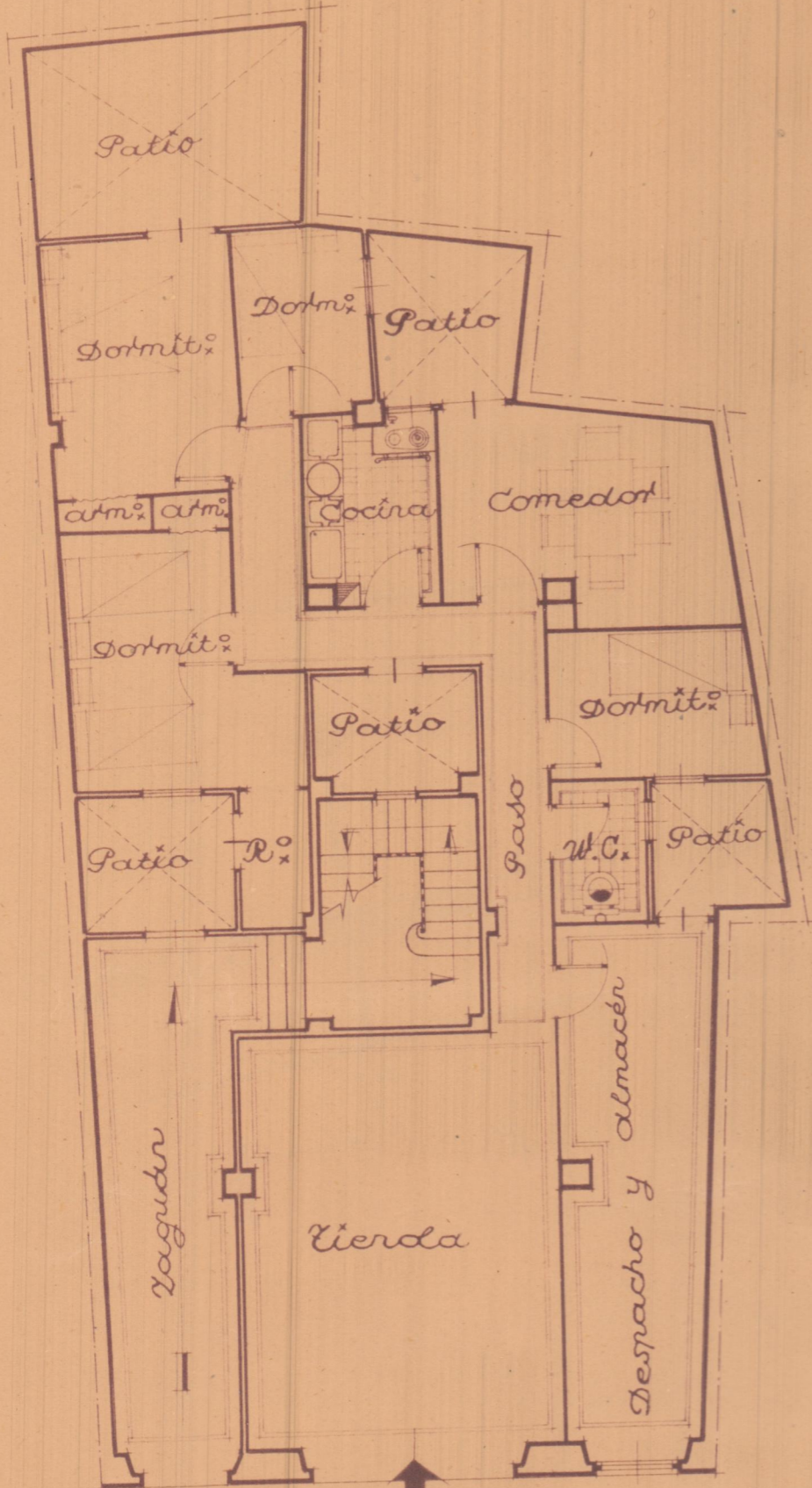
*Cimentación y
desagües.*



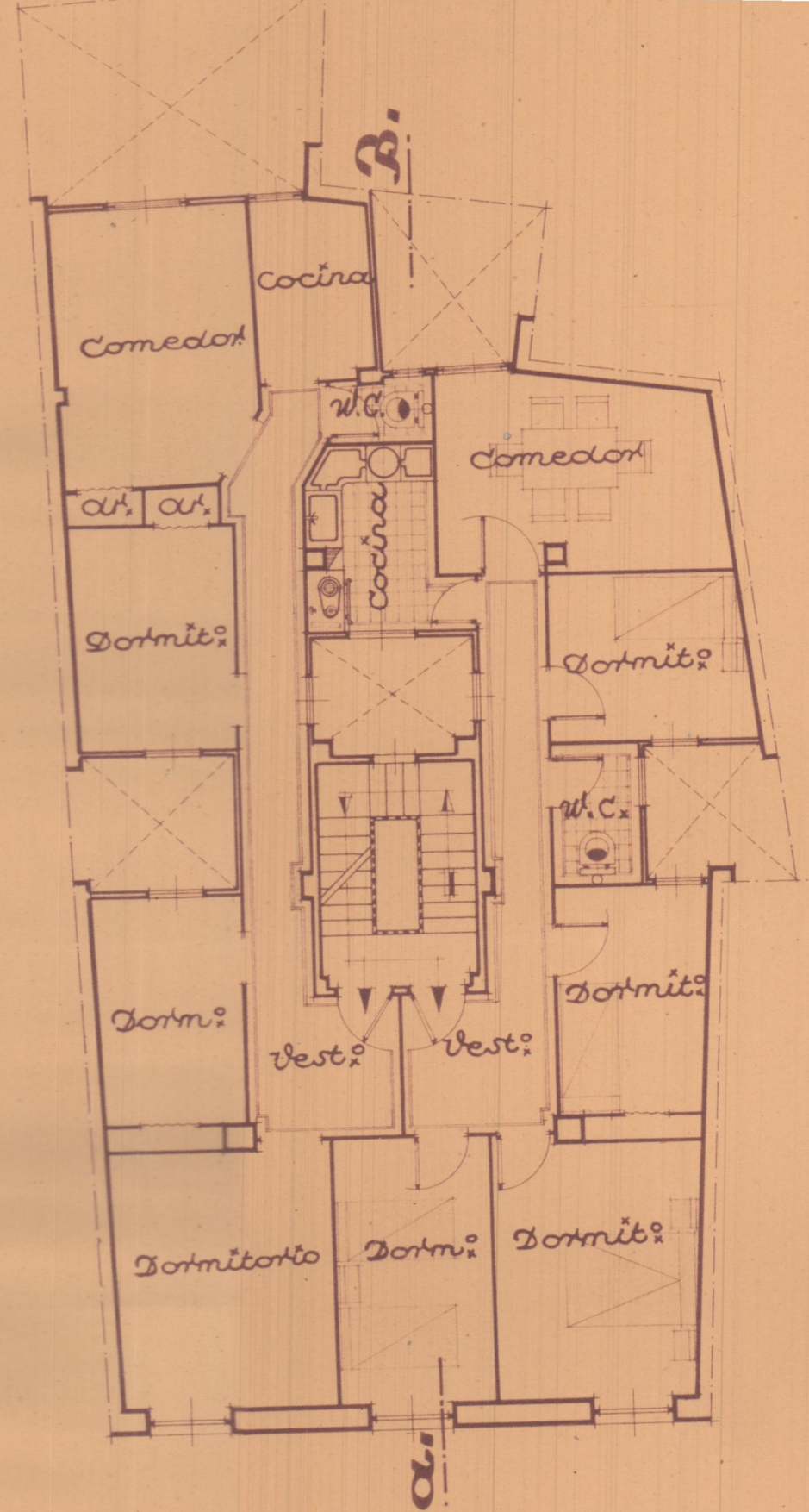
Entramado piso.



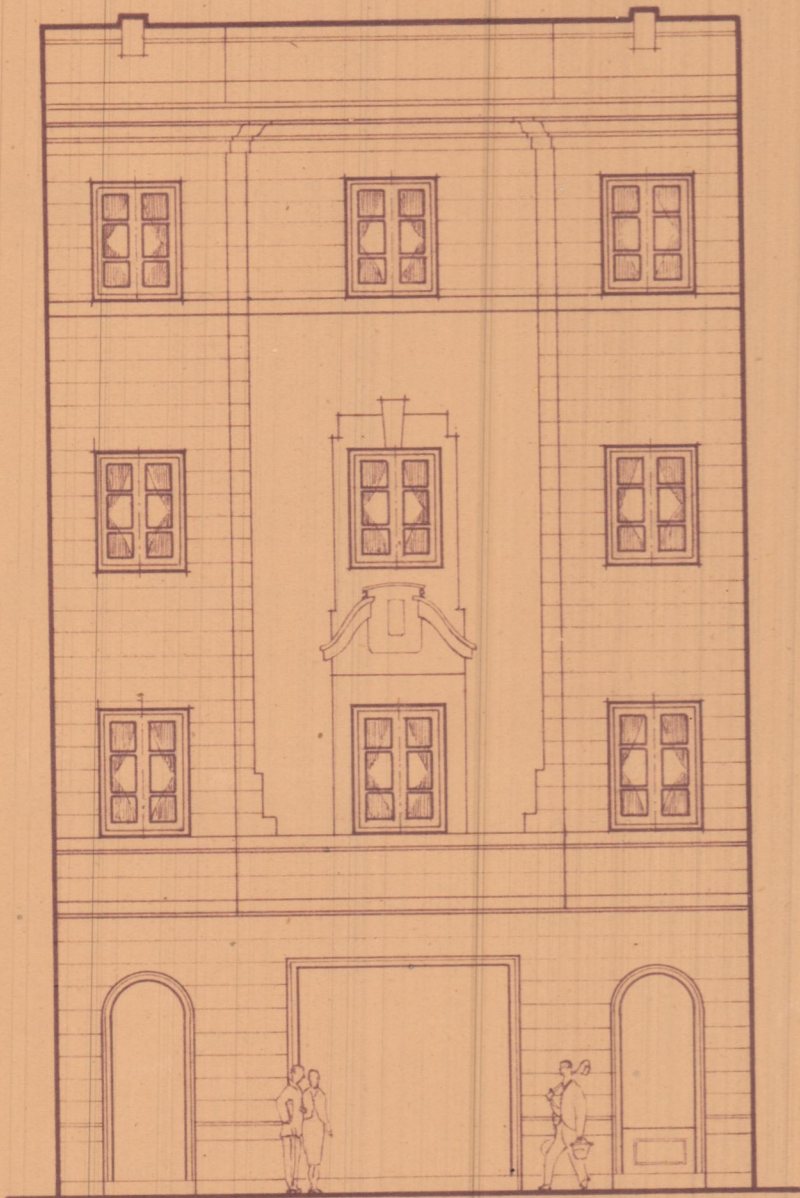
Entramado cubierta.



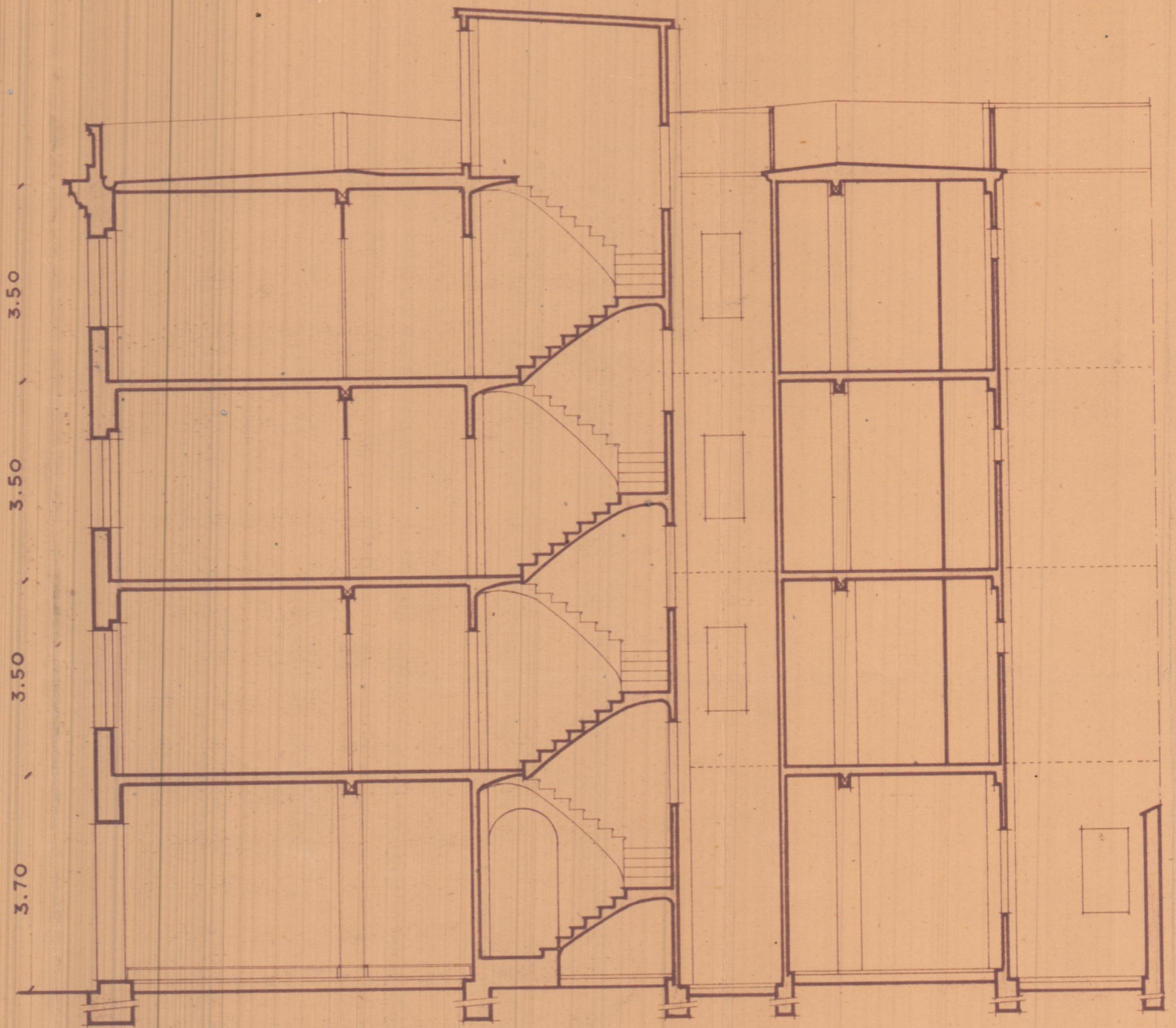
Planta baja.



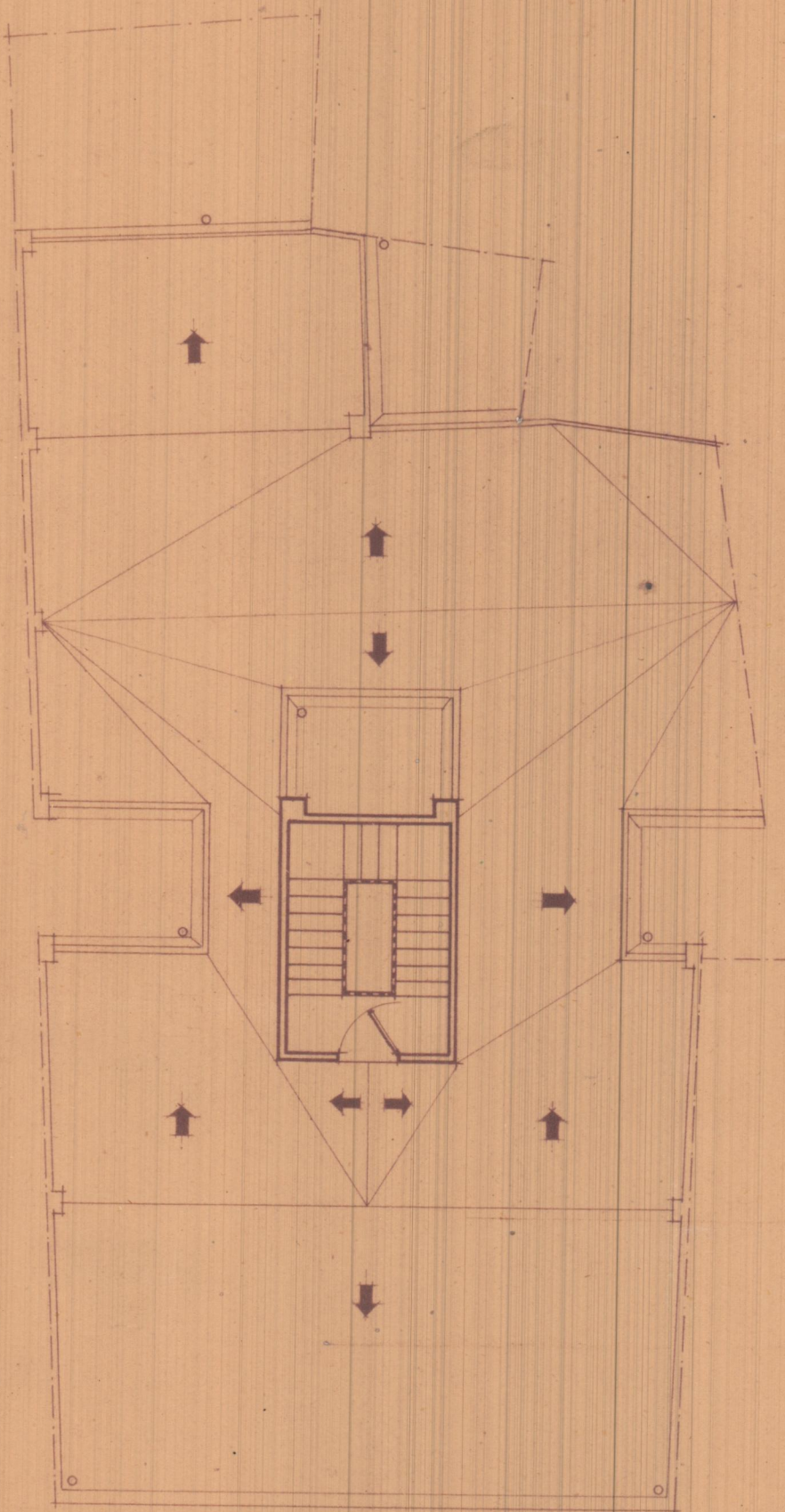
Planta de pisos.



alzado.



Sección por A. B.



Planta tettaida,