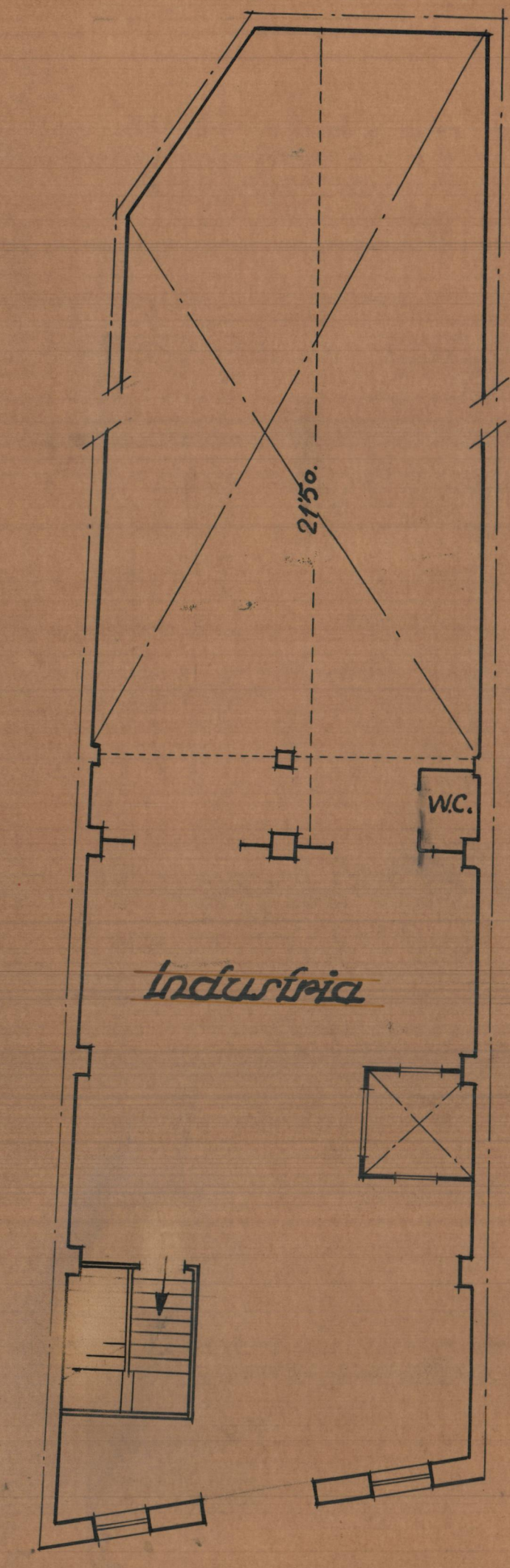
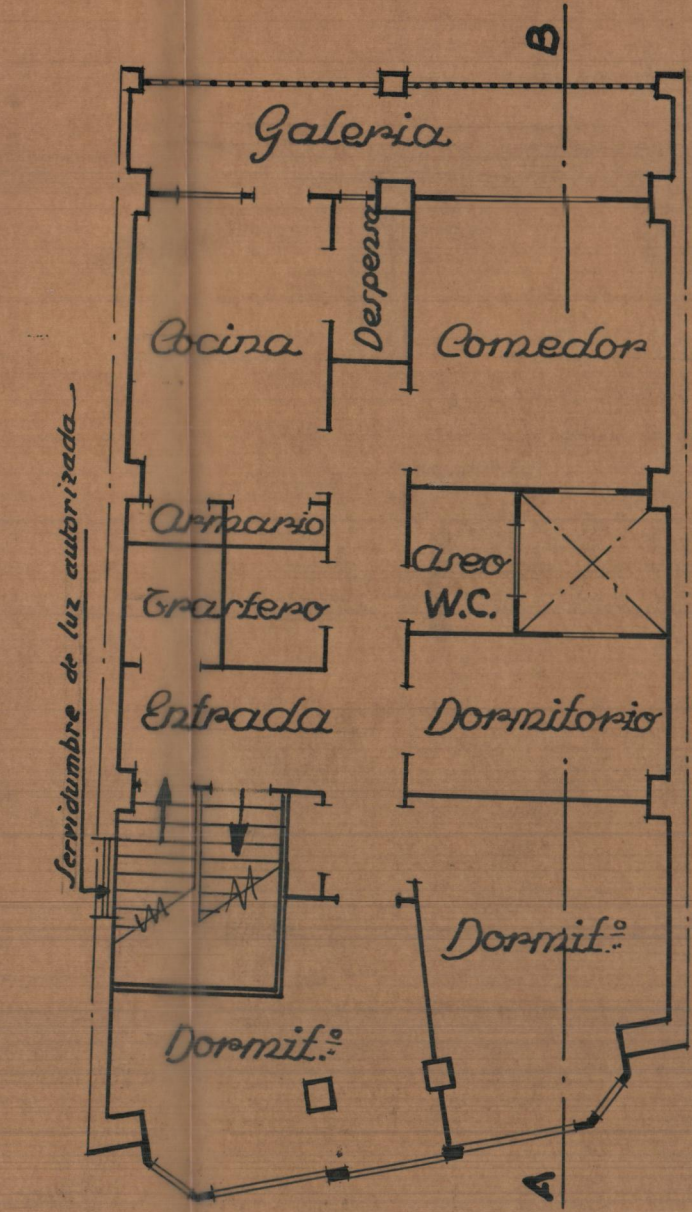


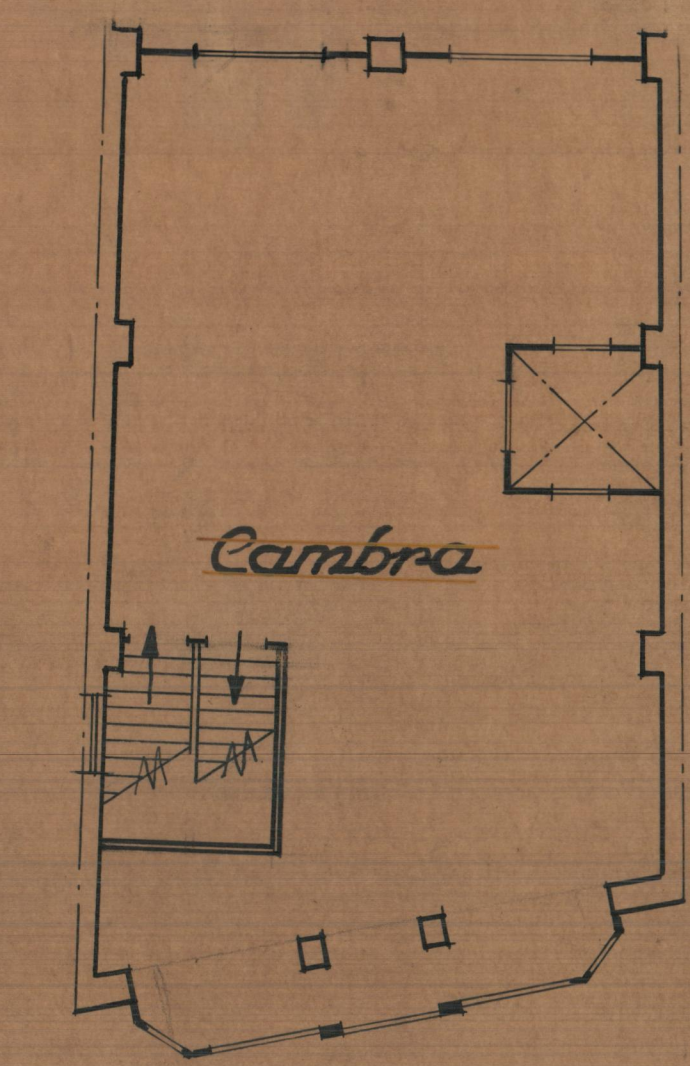
Cimentación.



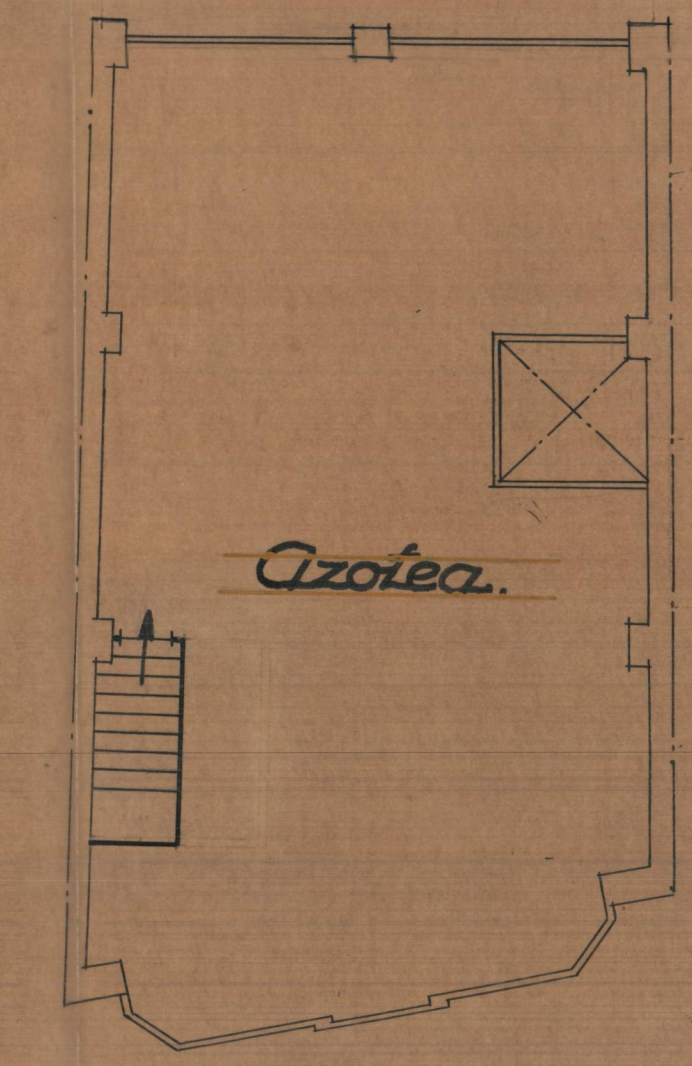
Planta baja.



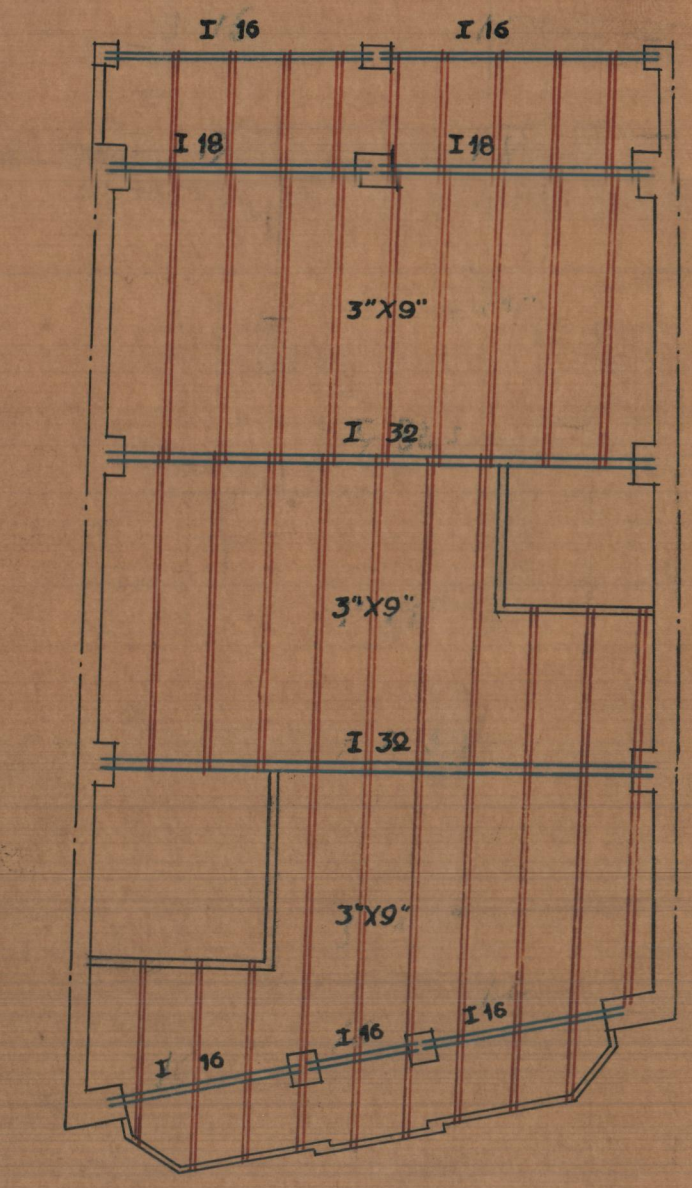
Piso 1.º



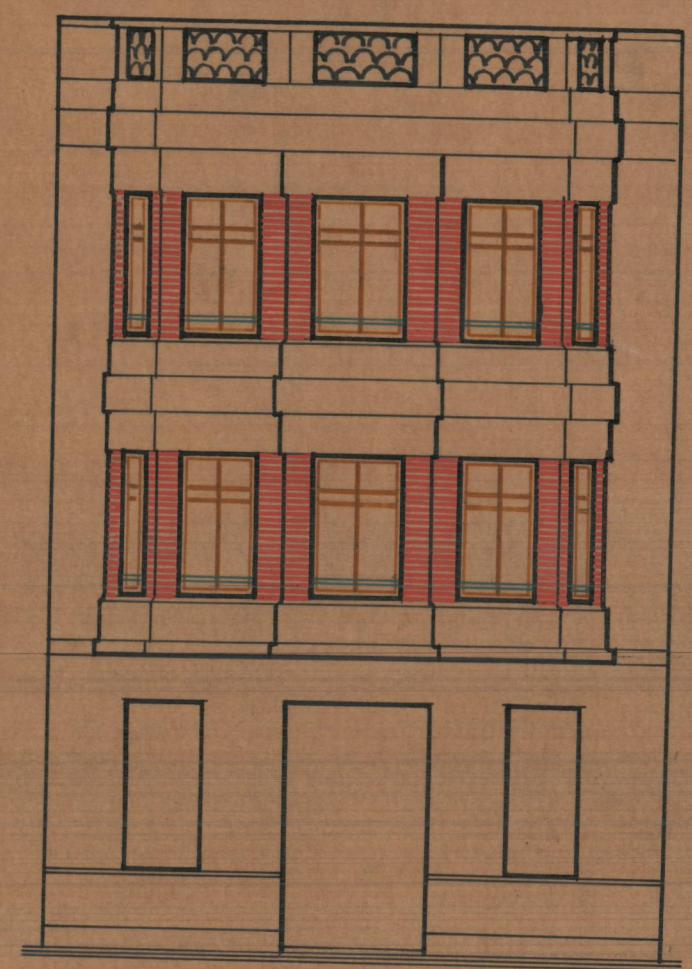
Piso 2.º



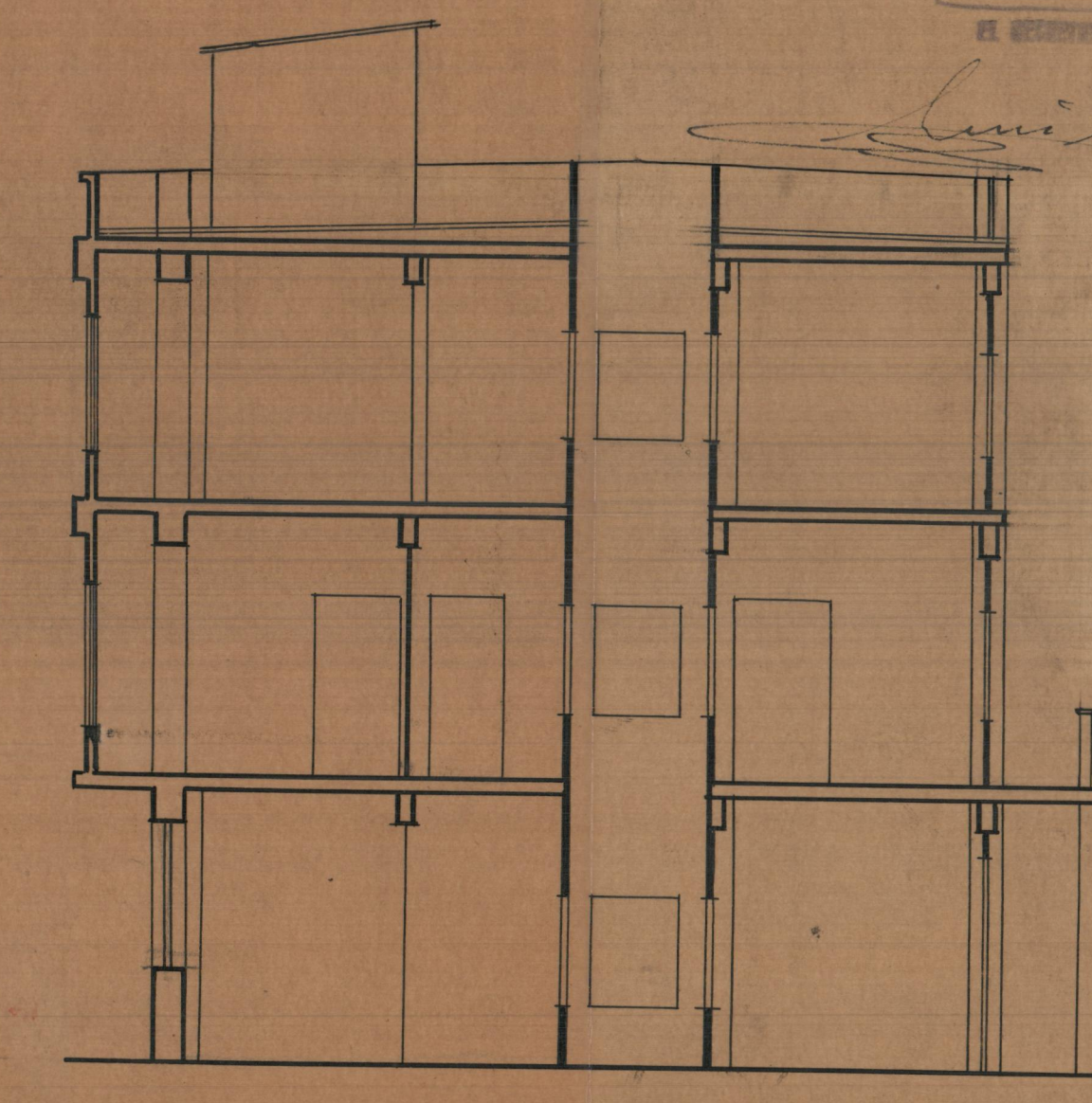
Terraza.



Entramados



Fachada.

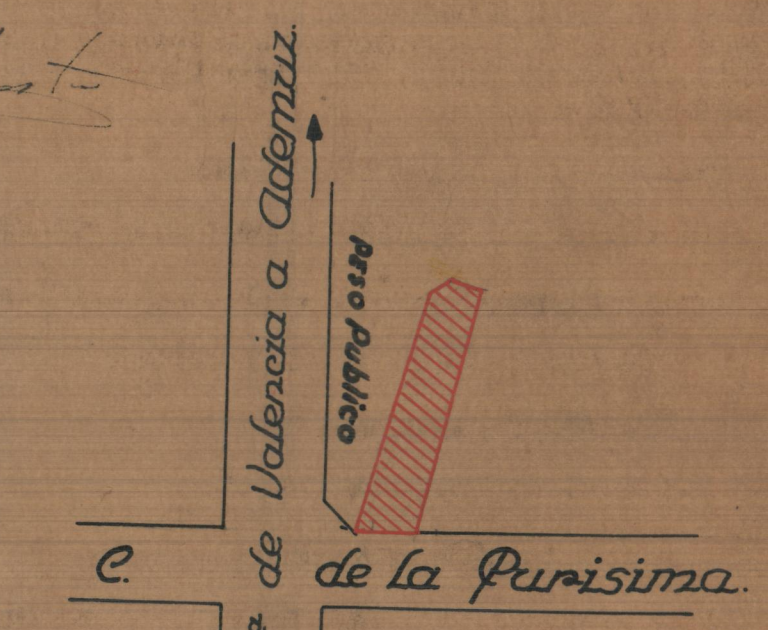


Sección A.B.

PROYECTO de
 casa-vivienda en la C/ de
 la Purísima N.º 12 Liria.
 Propietario: Fran.º Antonio Uopis.
 Escala 1:100

Valencia Julio 1943
 El Arquitecto
 A - DIC 1943

Luís Best



Emplazamiento
 Escala 1:1000.