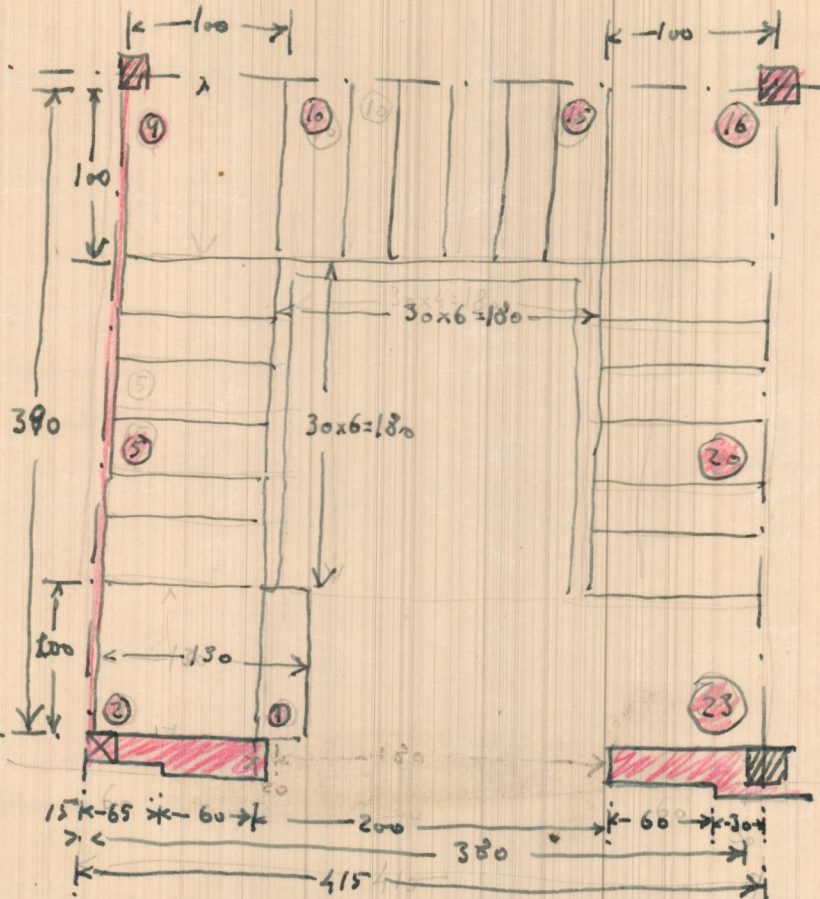
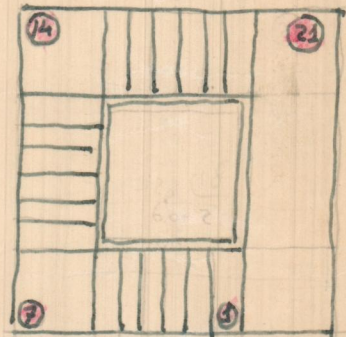


GANDIA - ESCALERA

18
21
18
36
378

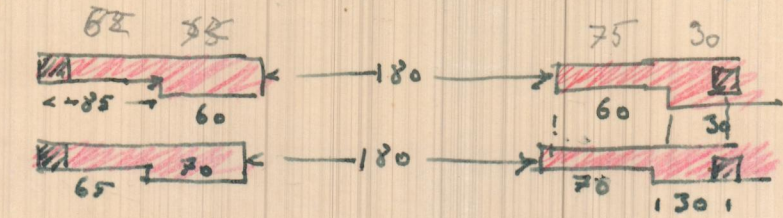


$21 \times 18 = 378$



ALTA Plante baja - 4'20
" Sobre todo - 45
4'65
 $23 \times 18 = 414$

65	0'15	4'15
60	0'20	0'35
200		
60		
30		
4'15		3'80



Primo de terminación de la unidad de la primera planta

E/50

brugia para la cipa de
excidera

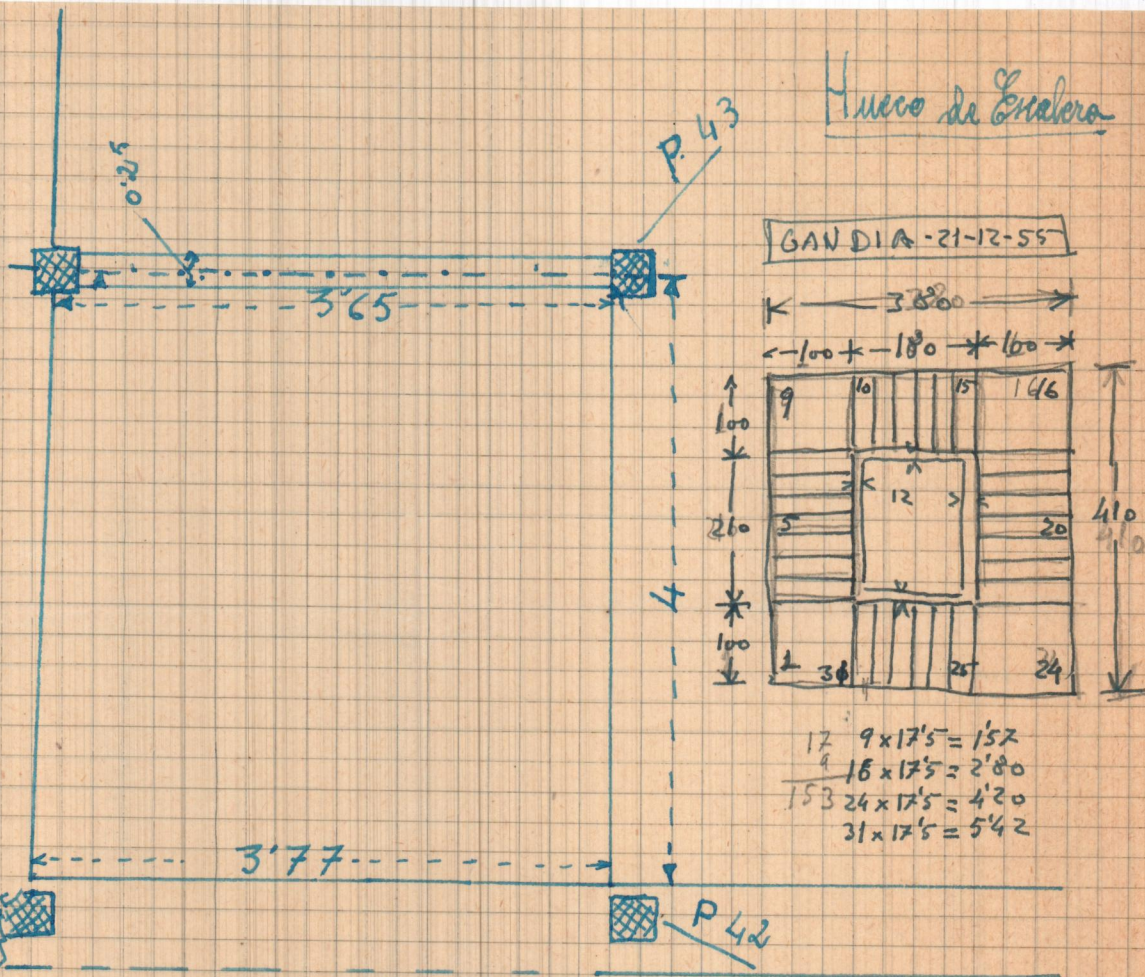
B^{co} Valencia
Gandia

30 = 3.00 x 1.00
51 = 4.50 x 1.50
laumentacion de los
primarios pilares



Banco Valencia
Gandia

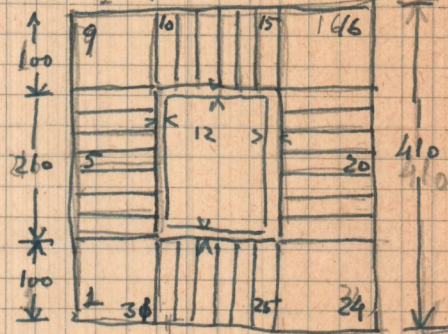
Huero de Enalera



GANDIA-21-12-55

3'800

← 100 ← 180 ← 160 →



4'10

$9 \times 17'5 = 157$
 $15 \times 17'5 = 262$
 $24 \times 17'5 = 420$
 $31 \times 17'5 = 542$

$17'5$
 $\frac{9}{1575}$
 $17'5$
 $\frac{15}{262}$
 1050
 $\frac{175}{1225}$
 2800
 $17'5$
 $\frac{24}{420}$
 200
 $\frac{350}{4200}$
 1750
 $\frac{31}{542}$
 175
 $\frac{585}{5425}$

C. VALIER