

CALLE DEL  
ARBOL

CUERPO  
DE  
DOS PLANTAS

ALBERGUE  
E. 1:100

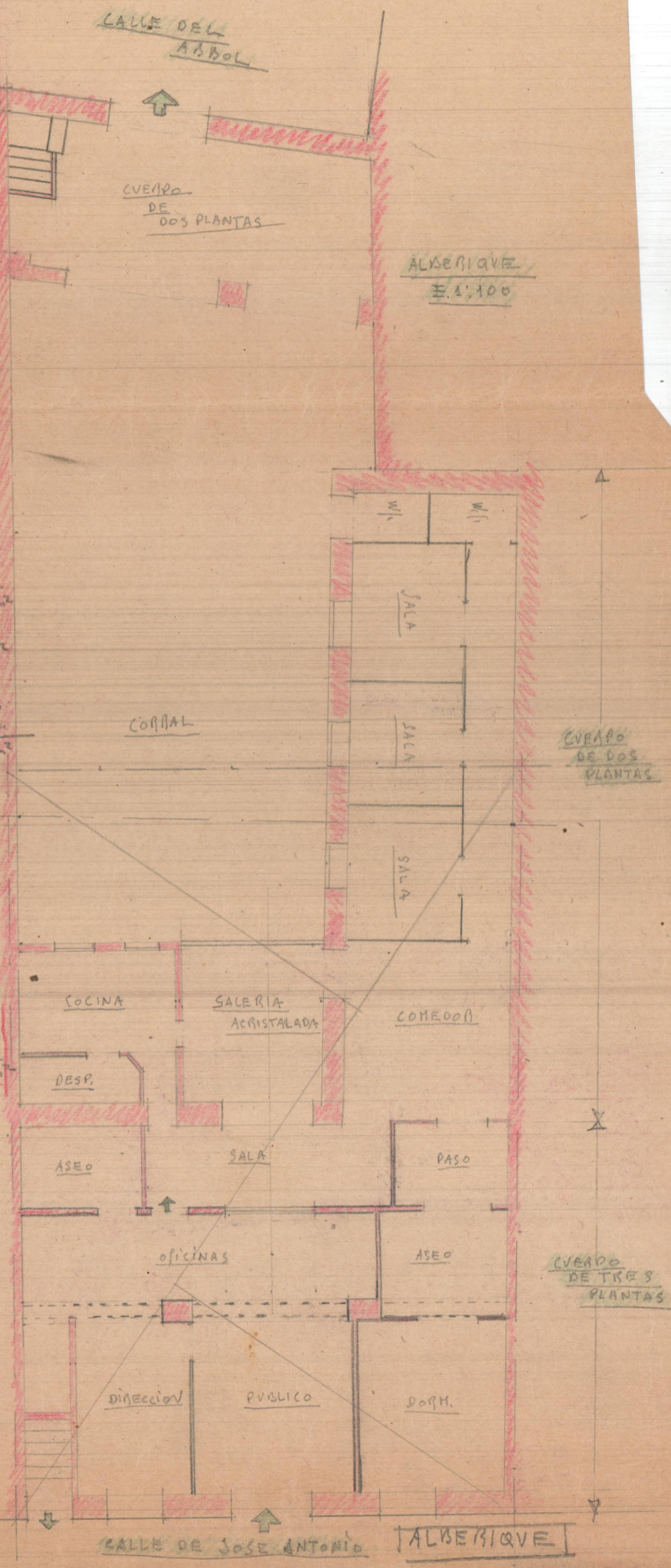
90+  
620  
115  
115  
575  
115  
225  
61

Solar  
 $11'50 \times 23'30 = 267'95$   
 $840 \times 820 = 6888$   
336'83m<sup>2</sup>

Edificio  
 $420 \times 850 = 357'00$   
 $1400 \times 440 = 616'00$   
 $330 \times 350 = 115'50$   
 $350 \times 350 = 122'50$   
 $1120 \times 930 = 1041'60$   
537'98m<sup>2</sup>

Solar RESTANTE  
 $\frac{1}{2} 2070 (9'50 + 9'20) =$   
 $= 10'20 \times 18'70 =$   
 $= 190'74m^2$

Solar vendido - 190'74  
" vendido - 152'16  
Total - 342'90m<sup>2</sup>



CALLE DE JOSE ANTONIO

ALBERGUE