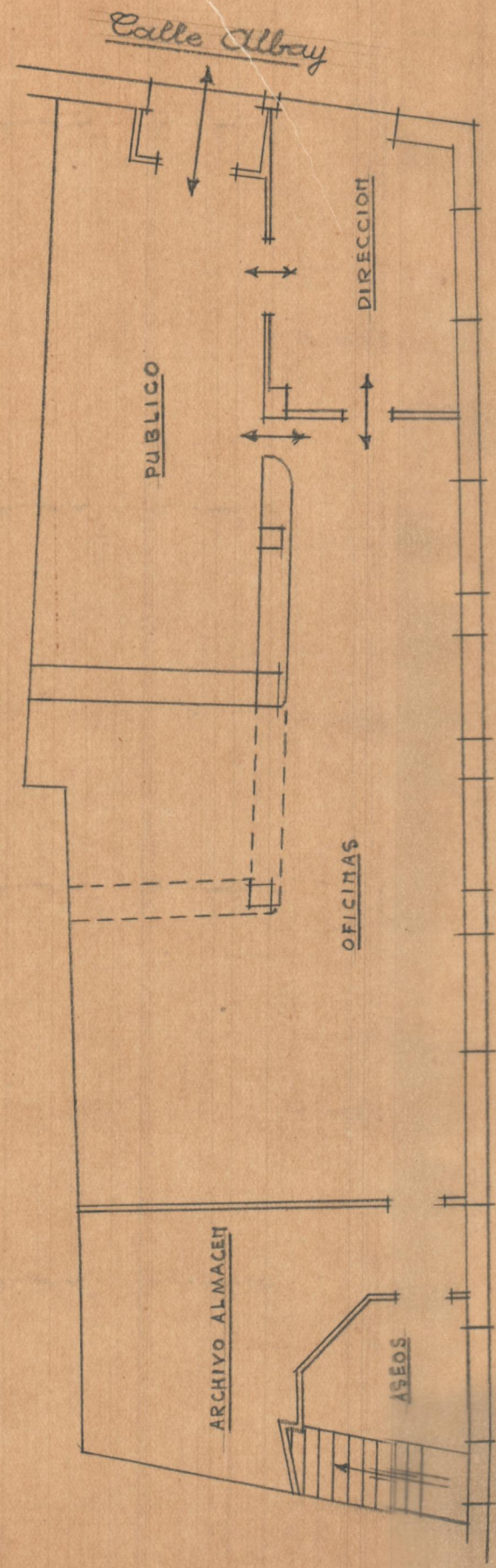
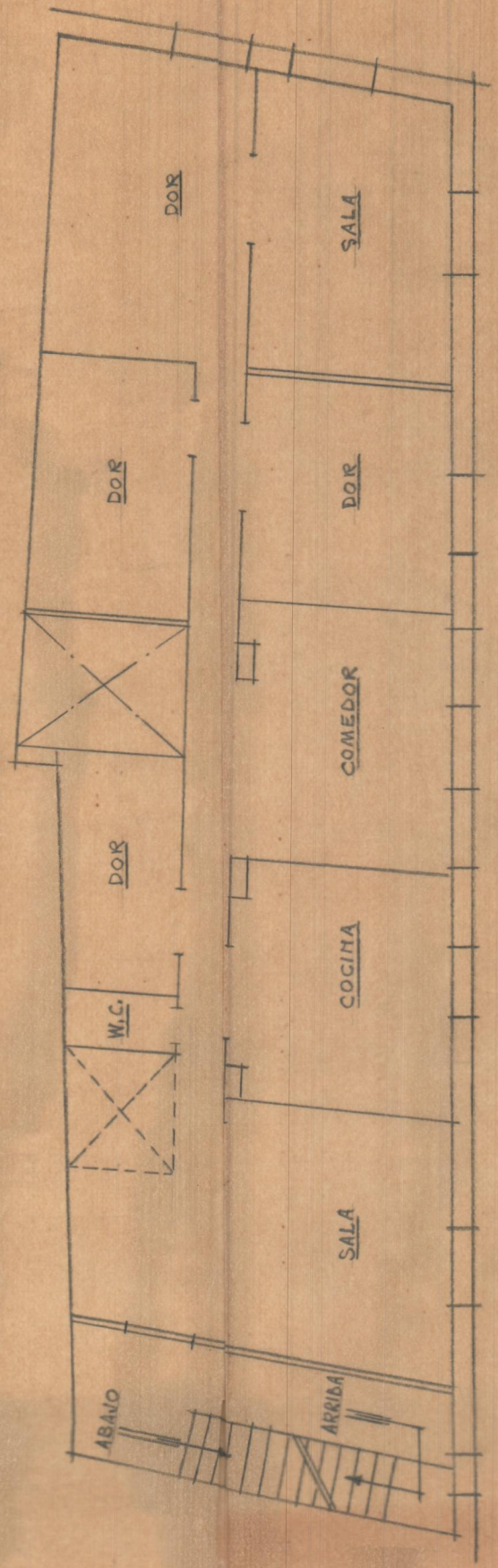


Banco de Valencia en VILLARREAL ESCALA = 1:100

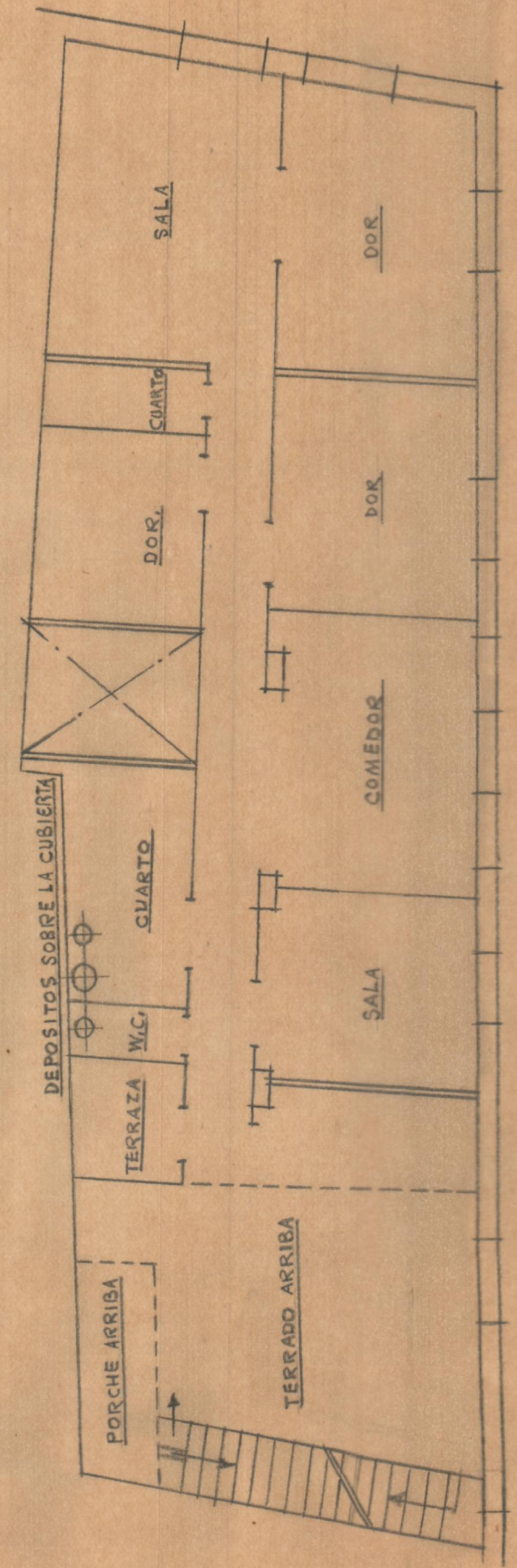
Valencia Enero 1950
EL ARQUITECTO



Calle de San Roque
1ª planta baja



2ª planta



3ª planta

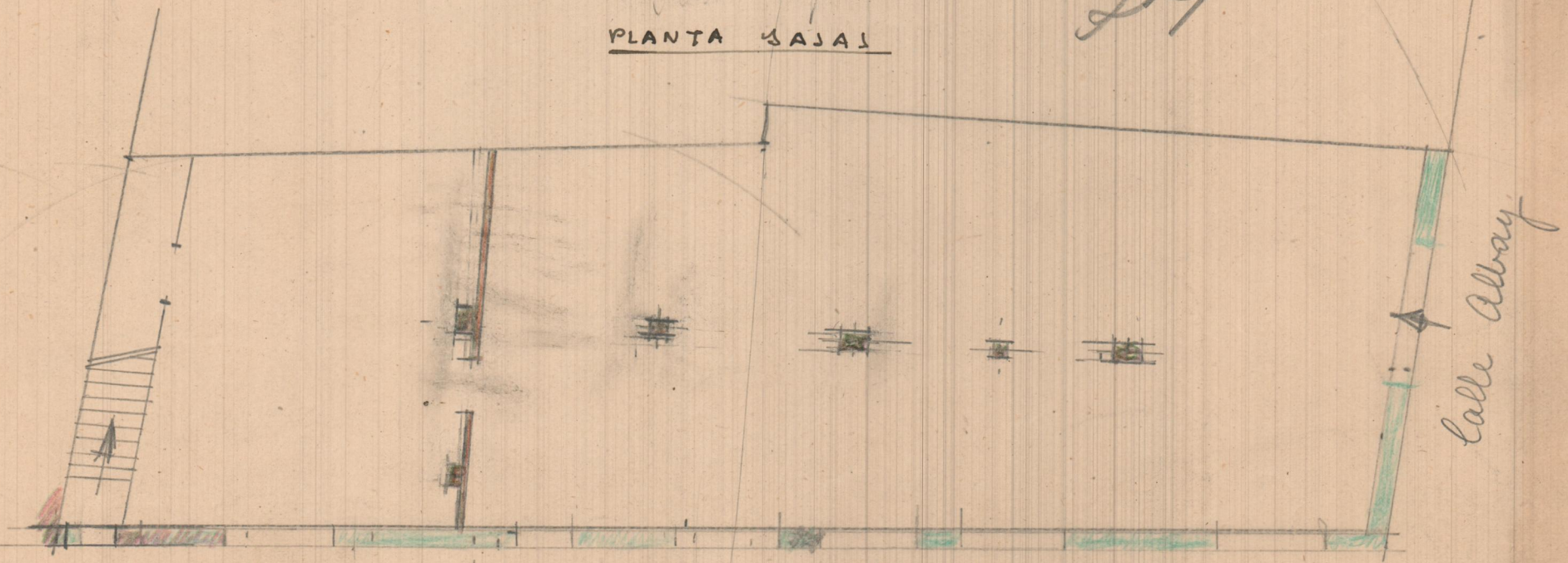
BANCO DE VALENCIA
VILLARREAL - ESTADO ACTUAL
1:100

①

2.25
8
15

sin

PLANTA BAJAS



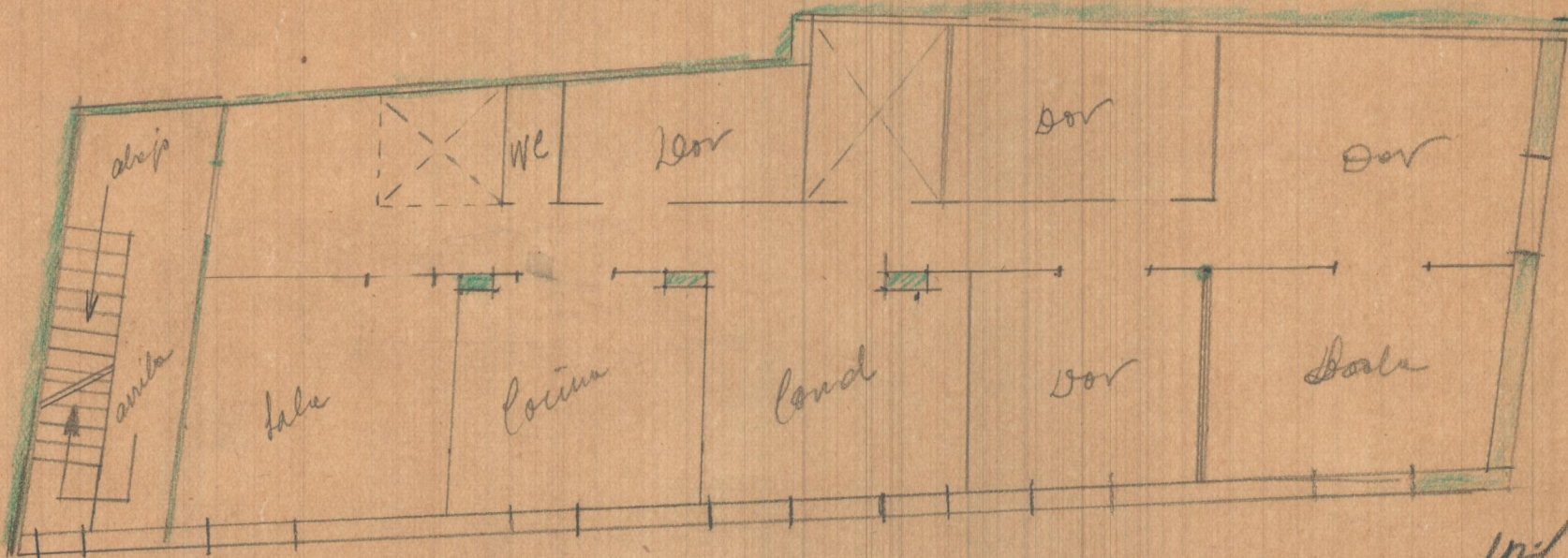
Calle San Roque

Calle Albay

BANCO DE VALENCIA
VILLARREAL - ESTADO ACTUAL
E-11100

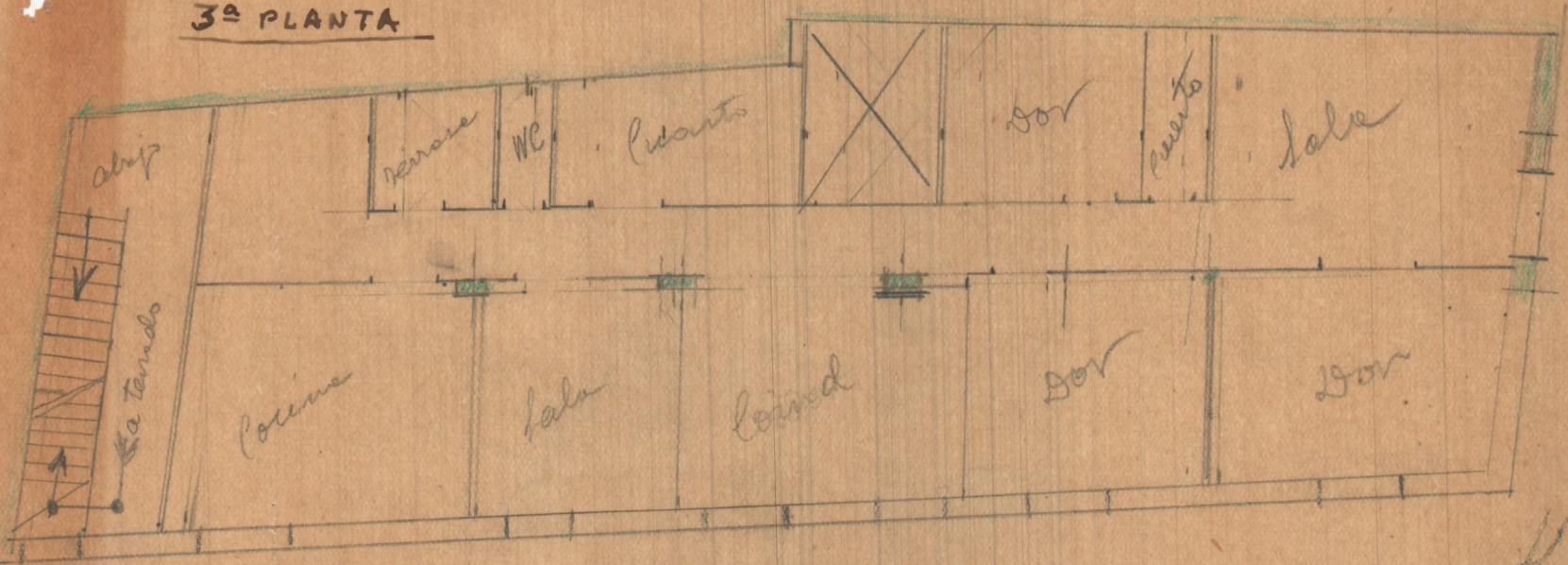
2

2ª PLANTA



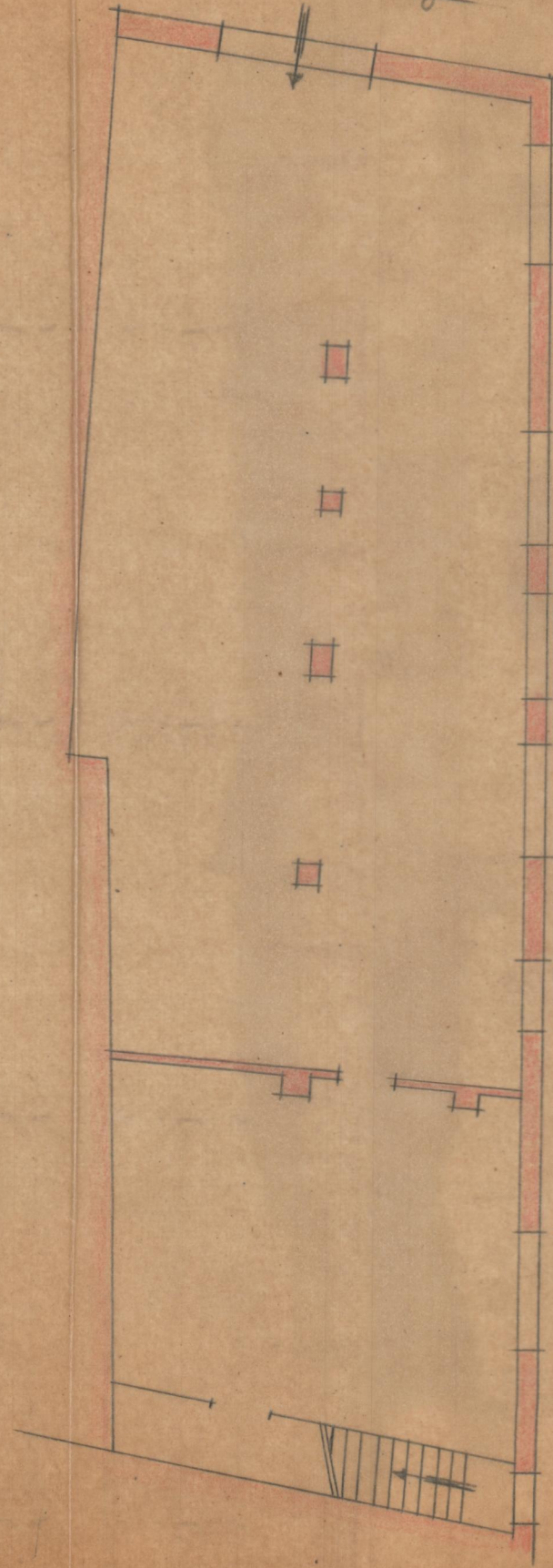
J. J. J.

3ª PLANTA



[Handwritten signature]

Calle Albay.

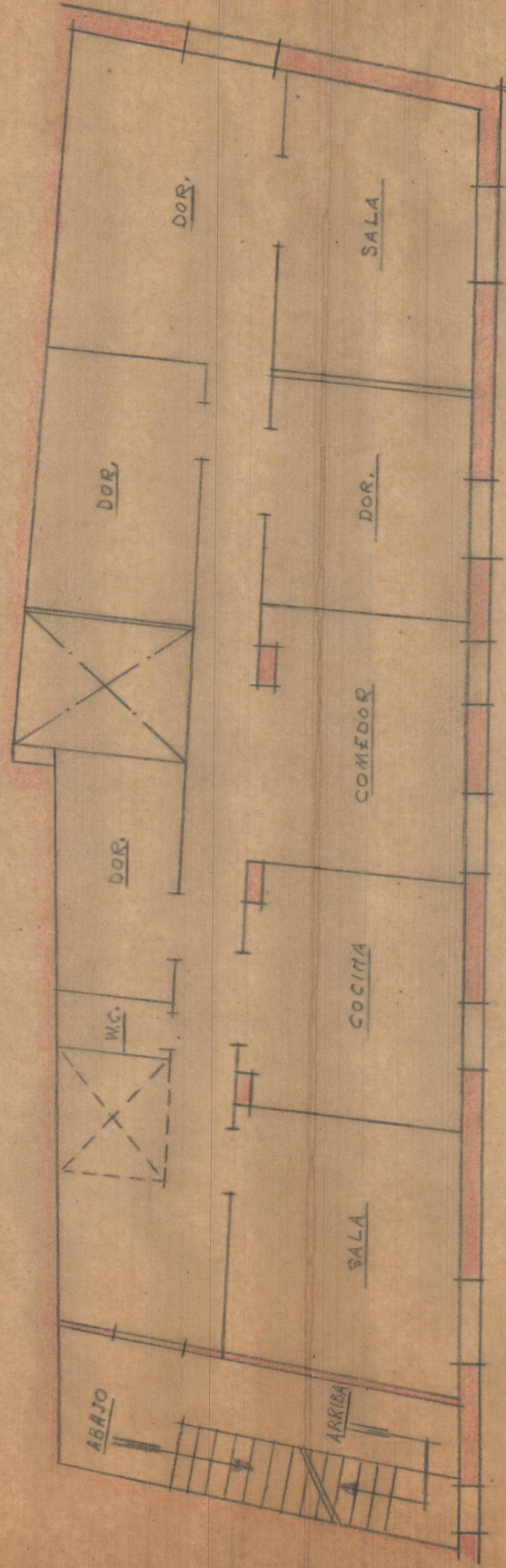


Calle de San Roque

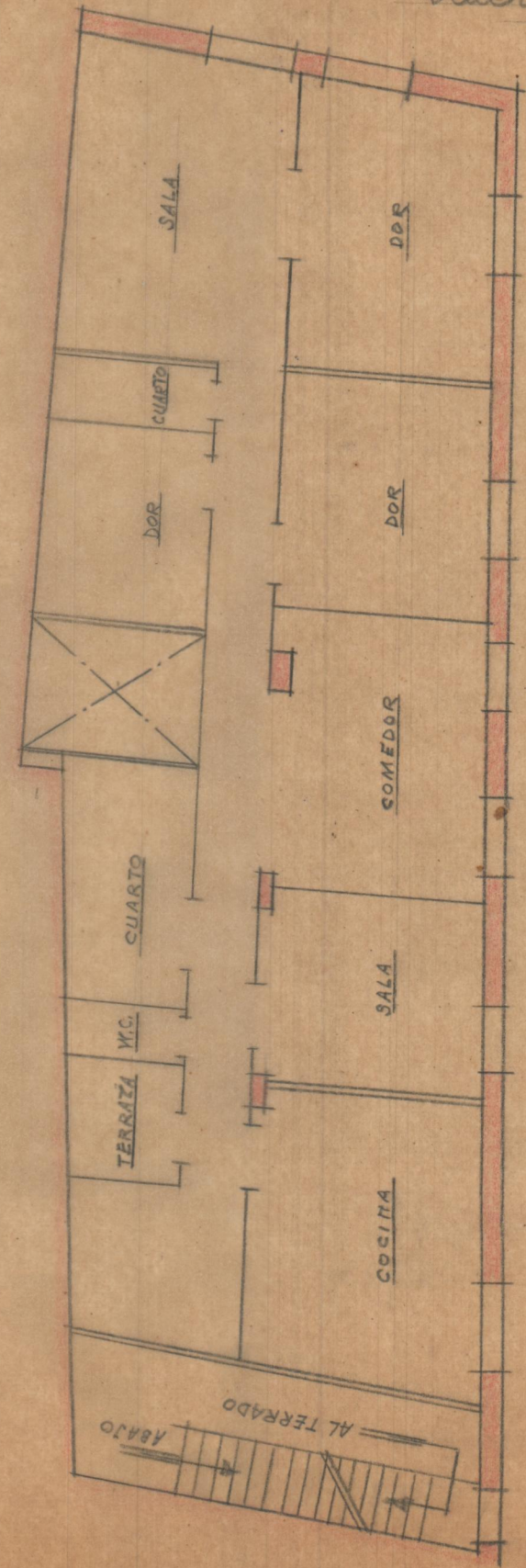
Planta Baja

Barco de Valencia VILLARREAL (estado actual) ESCALA=1:100

Valencia Diciembre 1949
EL ARQUITECTO



2ª Planta



3ª Planta