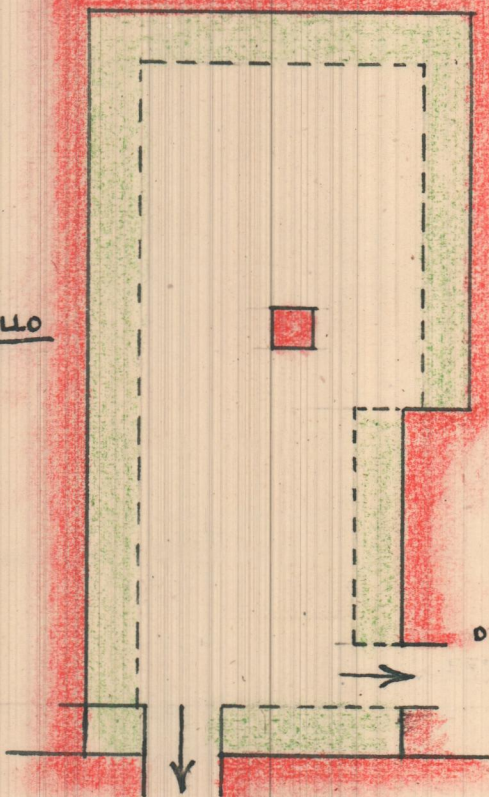


4'50 x 10 = 45 m²

PASILLO



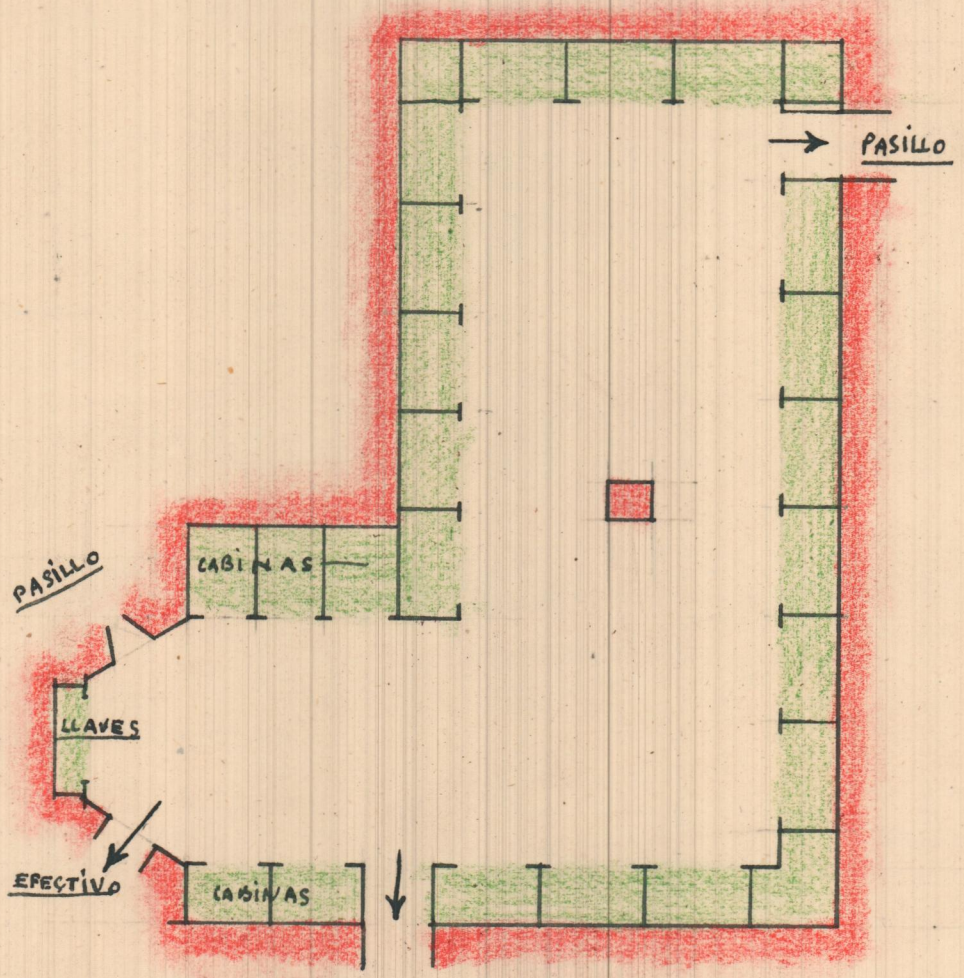
DEPARTAMENTO
DE
EFECTIVO

PUBICO

CAJAS
DE
ALQUILER

E.1-100

11'5" x 6" = 6960
3 x 530 = 1590
8490 = 2



PUBLICO

CASAS DE ALQUILER
E-1:100