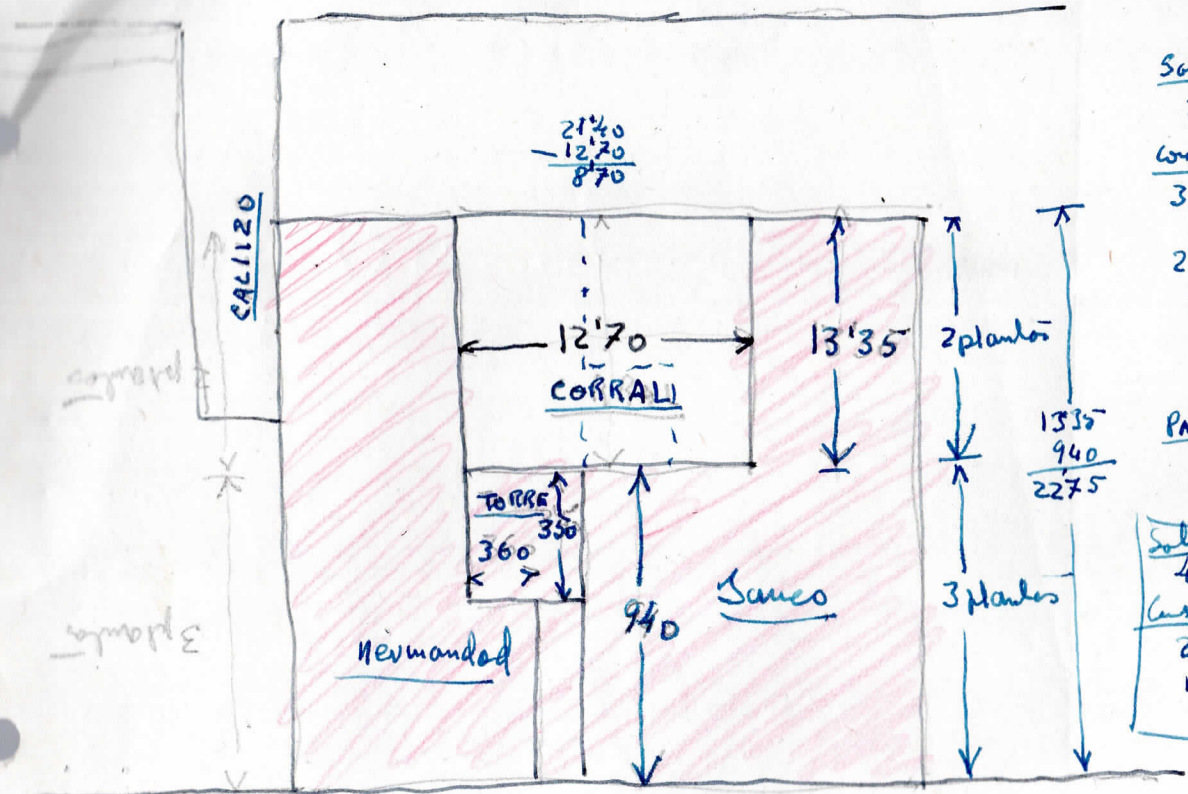


PEGO.-12/epi.ane.-1956



Solar
 $22'75 \times 21'40 = 476'85 m^2$

Construccion
 3 plantas
 $21'40 \times 9'40 = 201'16 m^2$
 2 plantas
 $(21'40 - 12'70) \times 13'35 = 116'14 m^2$
 $5'70 \times 15'55 = 89'77 m^2$
317'30 m^2

Patio
 $12'70 \times 13'35 = 169'54 m^2$

Solar
 $477 \times 500 = 238.500$
Cuanto
 $201 \times 1200 = 241.200$
 $116 \times 800 = 93.600$
Dob. real = 573.300

768
 2140
 Av. Lúcia de José Antunes 7