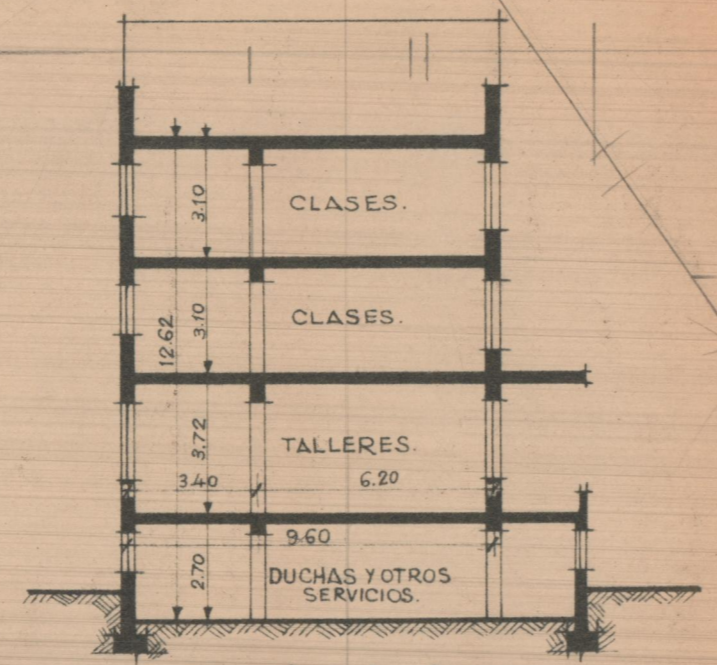


COLEGIO "LA SALLE" - PATERNA.

Planta acotada. *cp*

*Alumbrado  
609 m<sup>2</sup>*



*1222 m<sup>2</sup>*

*51'60*

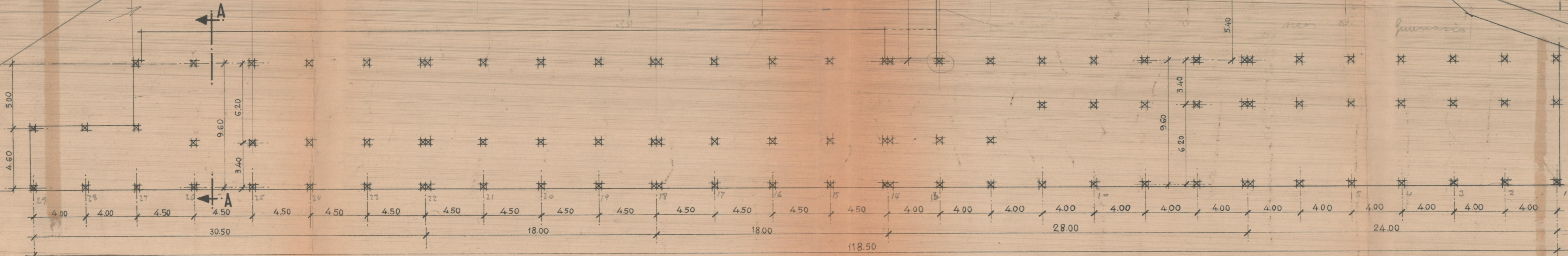
*LA SALLE*

1770

*Pala*

*meo*

*juvenario*



ESCALA=1:200.  
Valencia - Septiembre - 1965.  
EL ARQUITECTO: