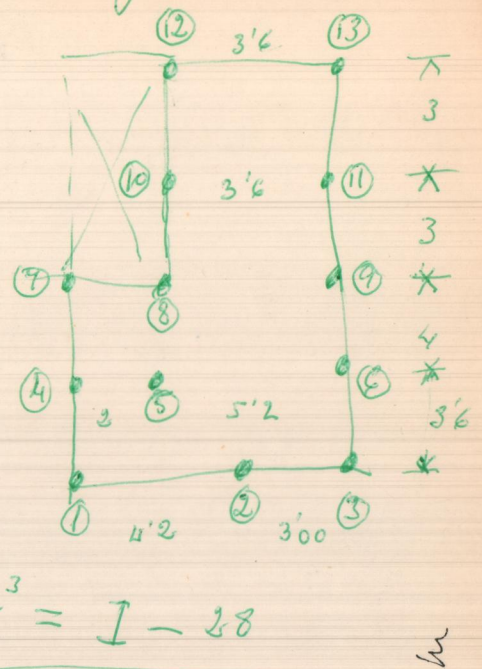


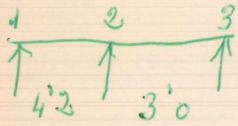
Luis Calapora Marti

Remysyal

Plares 30x30 4φ20

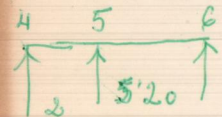


facenas



Piso 4'2 x 3 x 500 = 6300K  
 muro 4'2 x 2'8 x 0'2 x 1800 = 4233K  
 10533

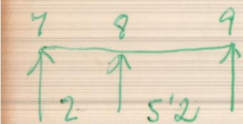
$w_{1-2} = \frac{10550 \times 4'2}{8} = 5538 \text{ K/m}$      $I_x = \frac{5538}{12} = 461 \text{ cm}^3 = \text{I-28}$



Piso 4 x 5'20 x 500 = 10400K  
 muro 2 x 2'8 x 0'2 x 1800 = 2016K

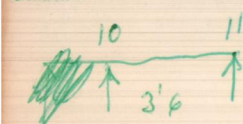
$w_{5-6} = \frac{10400 \times 5'2}{8} = 5408 \text{ K/m}$      $I_x = \frac{5408}{12} = 450 \text{ cm}^3 = \text{I-28}$

$w_{4-5} = \frac{10400 \times 2}{8} = 2600 \text{ K/m}$      $I_x = \frac{2600}{12} = 217 \text{ cm}^3 = \text{I-20}$



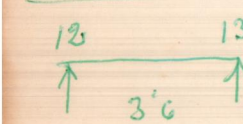
Alg. 9 igual a 5-6 = I-28

$w_{7-8} = \frac{12416 \times 2}{8} = 3104 \text{ K/m}$      $I_x = \frac{3104}{12} = 258 \text{ cm}^3 = \text{I-22}$



Piso 4 x 3'6 x 500 = 7200K

$w_{10-11} = \frac{7200 \times 3'6}{8} = 3240 \text{ K/m}$      $I_x = \frac{3240}{12} = 270 \text{ cm}^2 = \text{I-22}$



Piso 2 x 3'6 x 500 = 3600K  
 muro 0'2 x 2'8 x 3'6 x 1800 = 3628K  
 7230K

$w_{12-13} = \frac{7250 \times 3'6}{8} = 3262 \text{ K/m}$      $I_x = \frac{3262}{12} = 271 \text{ cm}^3 = \text{I-22}$