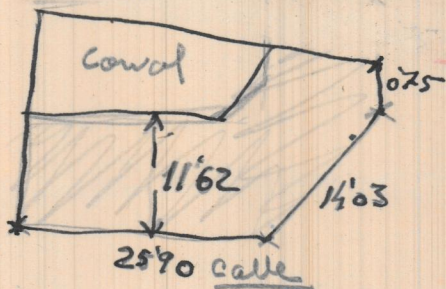
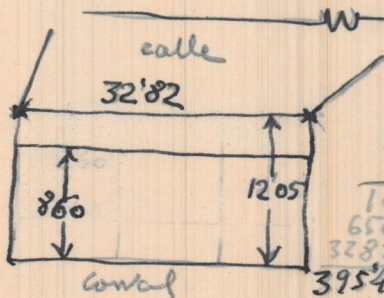


Porteria- 3'50
 4'20
 7'0
 14'20 m²
 11'05
 13
 3315
 1105
 $14365 \times 5 = 71825$
 1470
Centellas 6 73295

Bajo 4 pisos y porteria



Cabo July 2-6-8/0



Cabo July-1-3-5

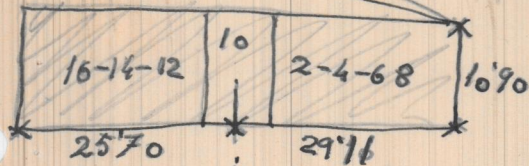
Bajo 3 pisos y
 librerias
 32'82
 12'05
 16410
 6564
 3282
 39548
 32'82
 8'60
 19692
 26256
 282257

30-Agosto-1948

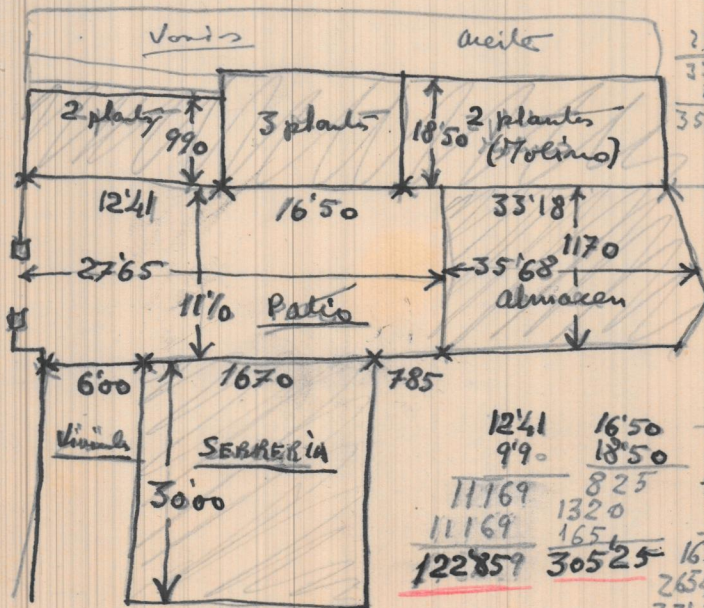
1581924
 28225
 1864174

30 Agosto 1948

Rios Bayona



2911
 2570
 5481
 1090
 49329
 5481
 597429



258
 2560
 3318
 250
 3568

2925
 75
 700

1241 1650
 99 1850
 11169 825 3318
 11169 1320 1850
 122859 30525 16590
 26544
 3318
 613830

2765
 11'10
 2765
 2765
 2765
 306915

1670
 3000
 50100

3568
 1170
 24926
 3568
 3568
 417456