

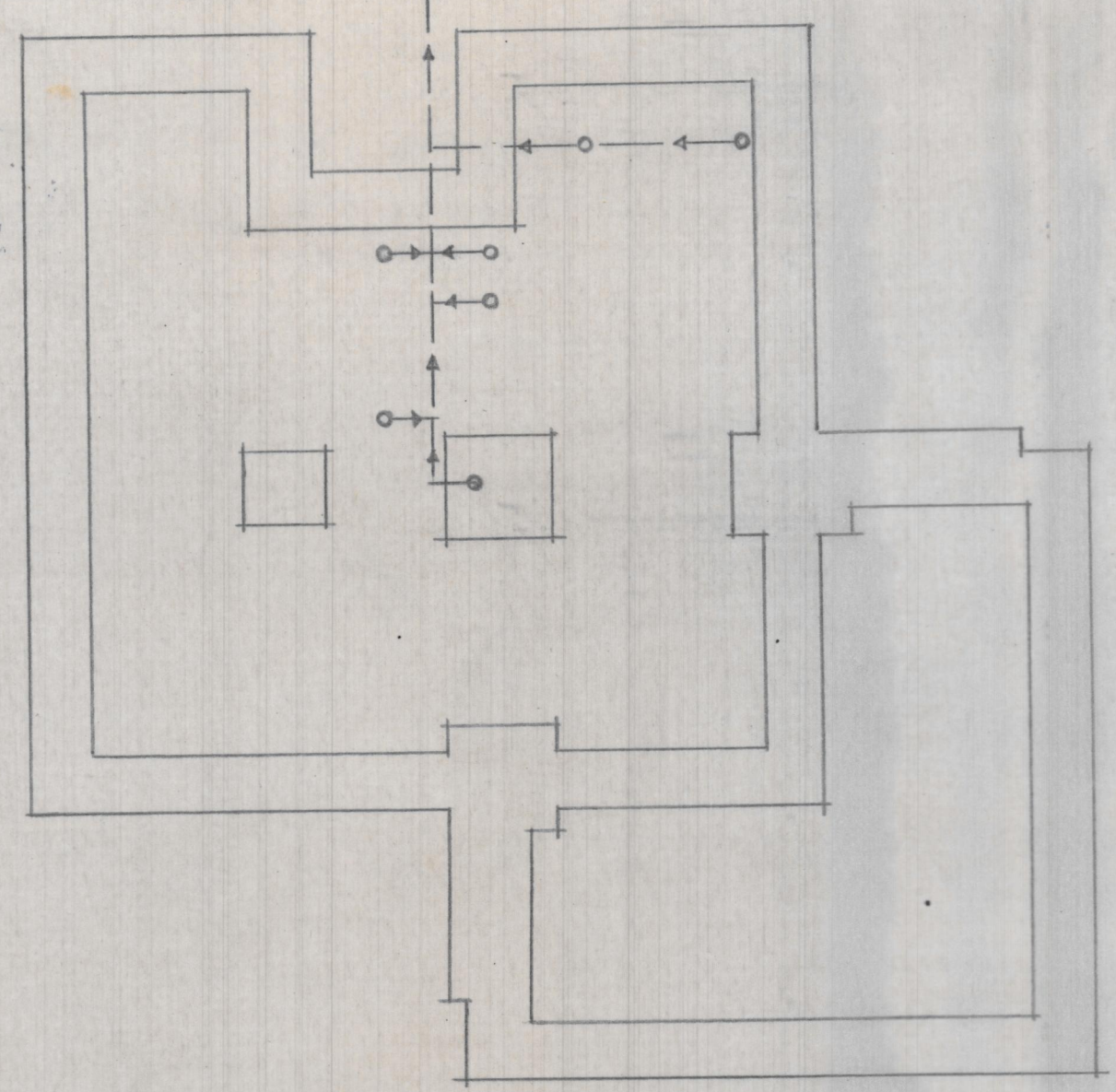
EDIFICIO EN DENIA

ESCALA=1:100

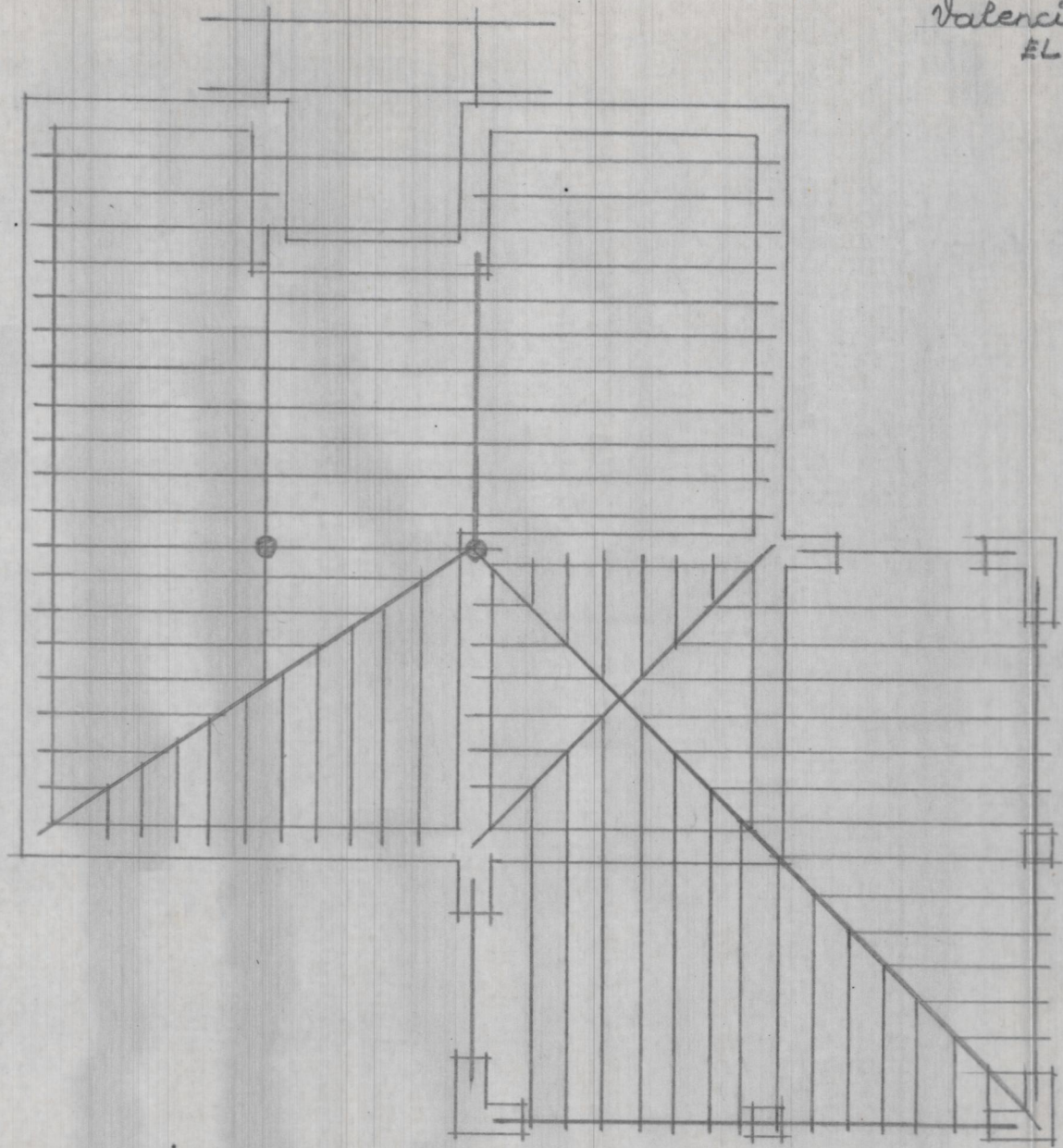
Valencia Noviembre 1950
EL ARQUITECTO



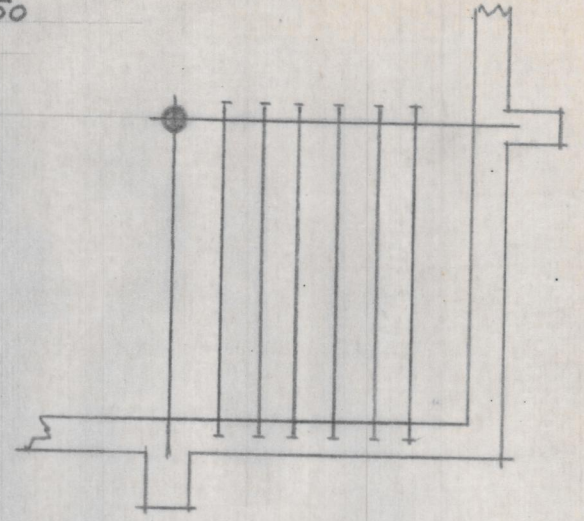
A LA FOSA SEPTICA



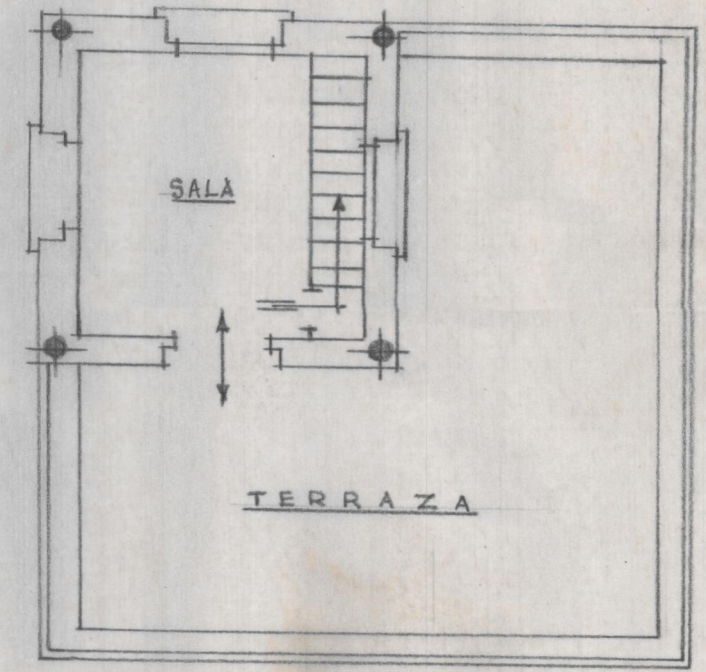
Cimiento y desagües



Entramado de cubierta.



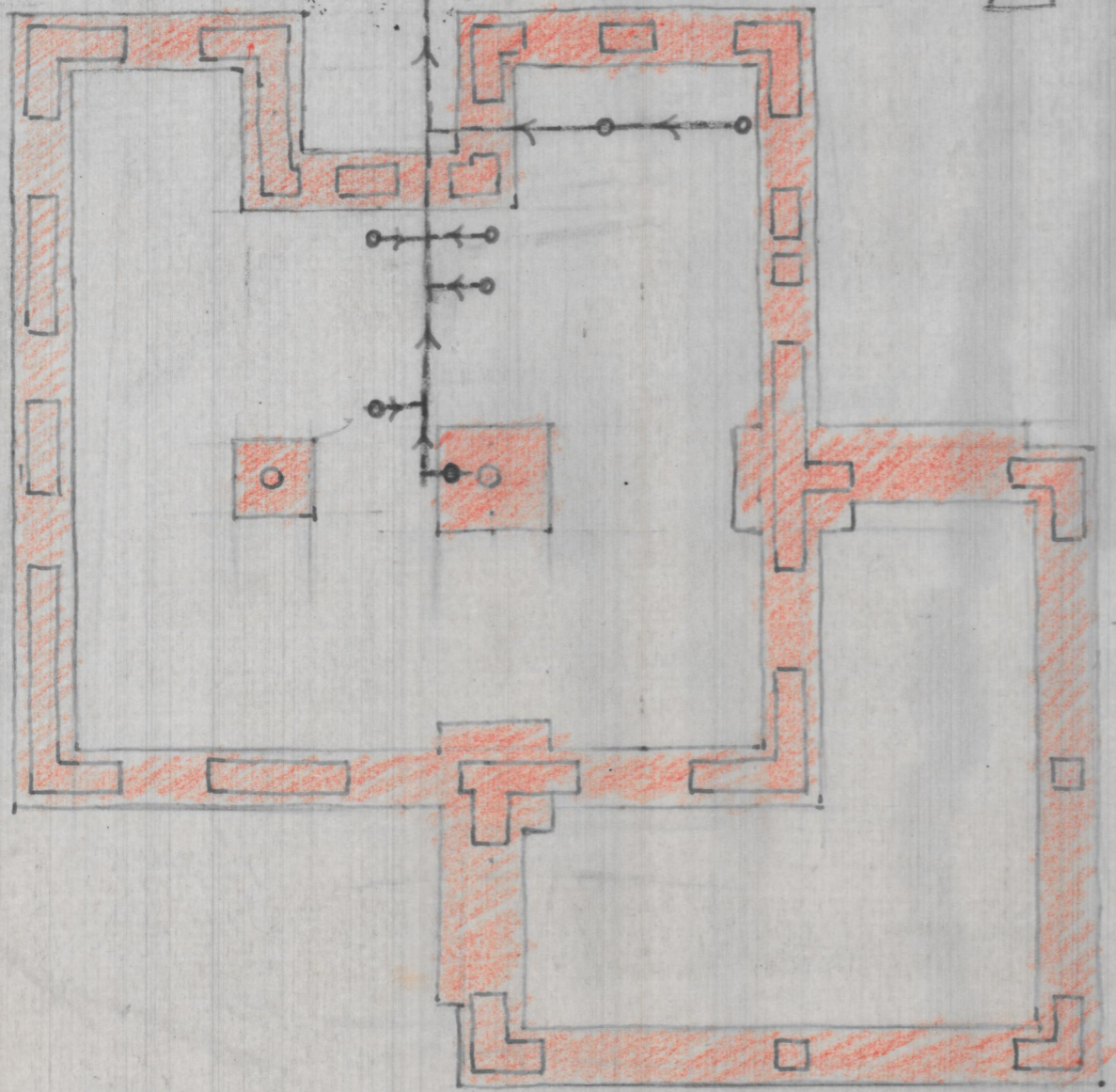
Entramado de piso



Planta alta

A LA FOSA SEPTICA

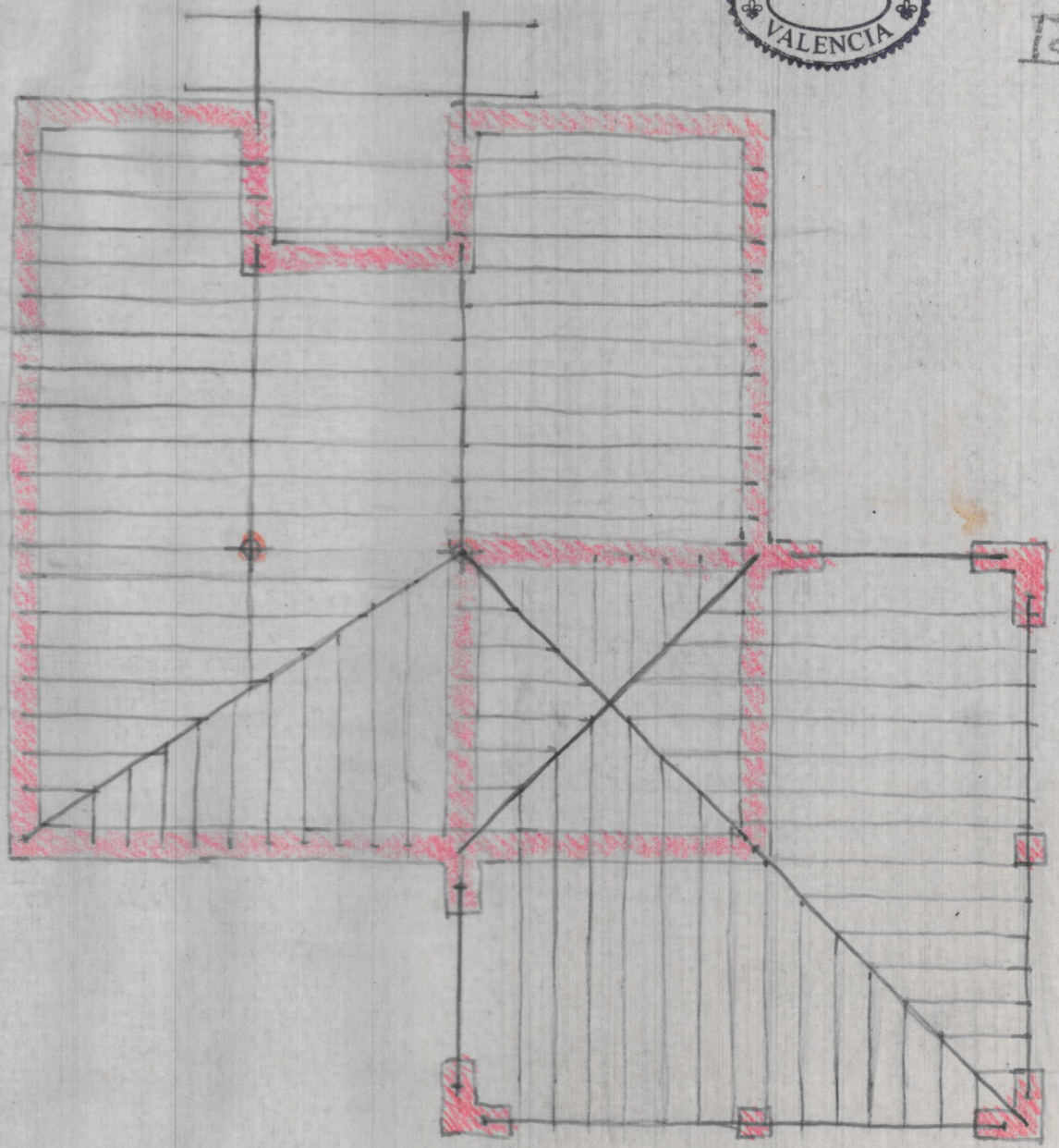
1



CIMENTOS y DESAGÜES

JOAQUIN RIETA
VALENCIA

12



ENTRAMADOS DE CUBIERTAS