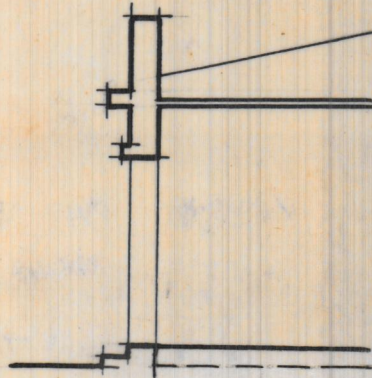


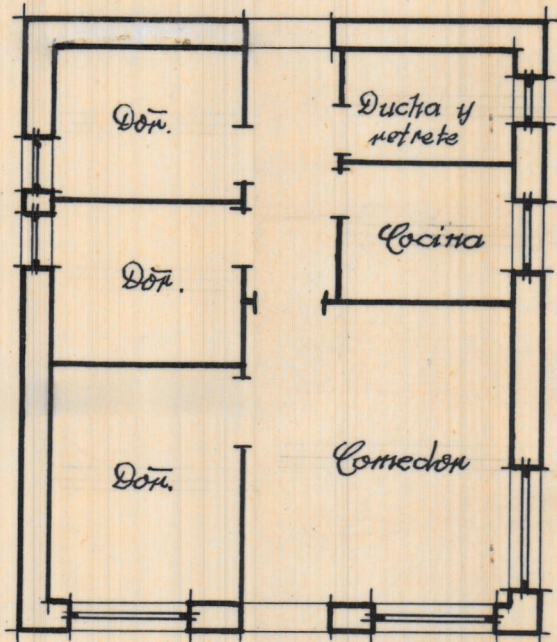
Fachada



Sección

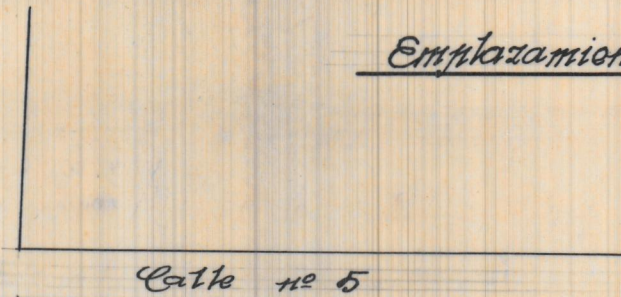
Fin de semana en la Cañada

Escala 1:100

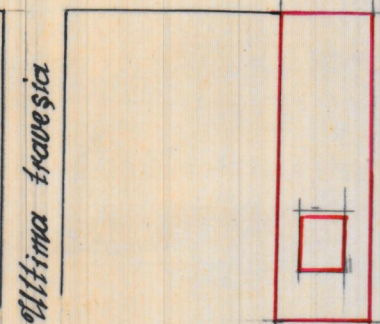


Planta.

Ferrocarril de Valencia a Liria

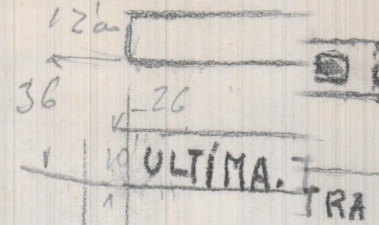
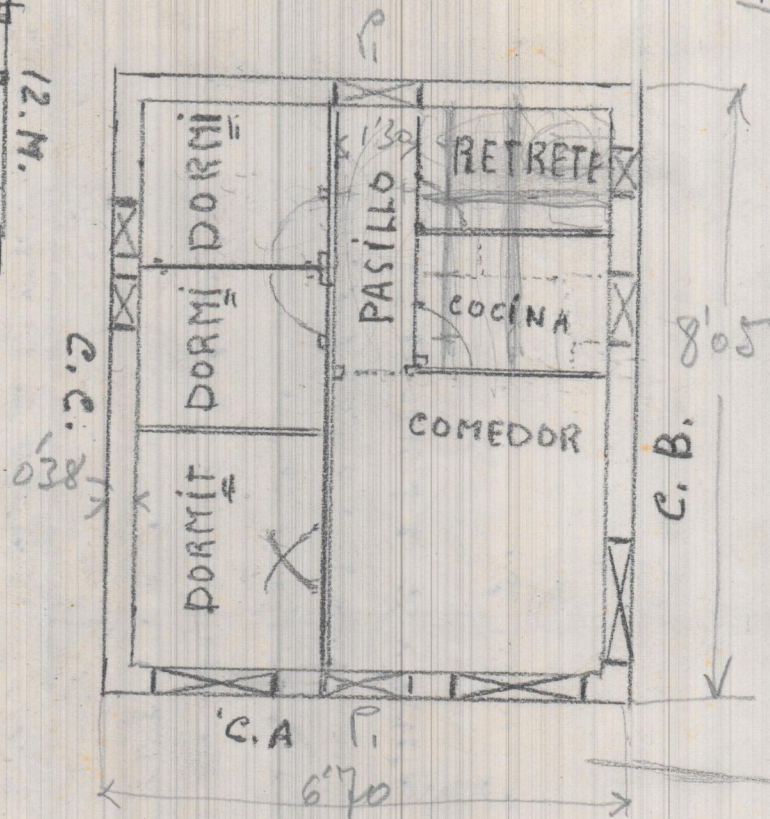
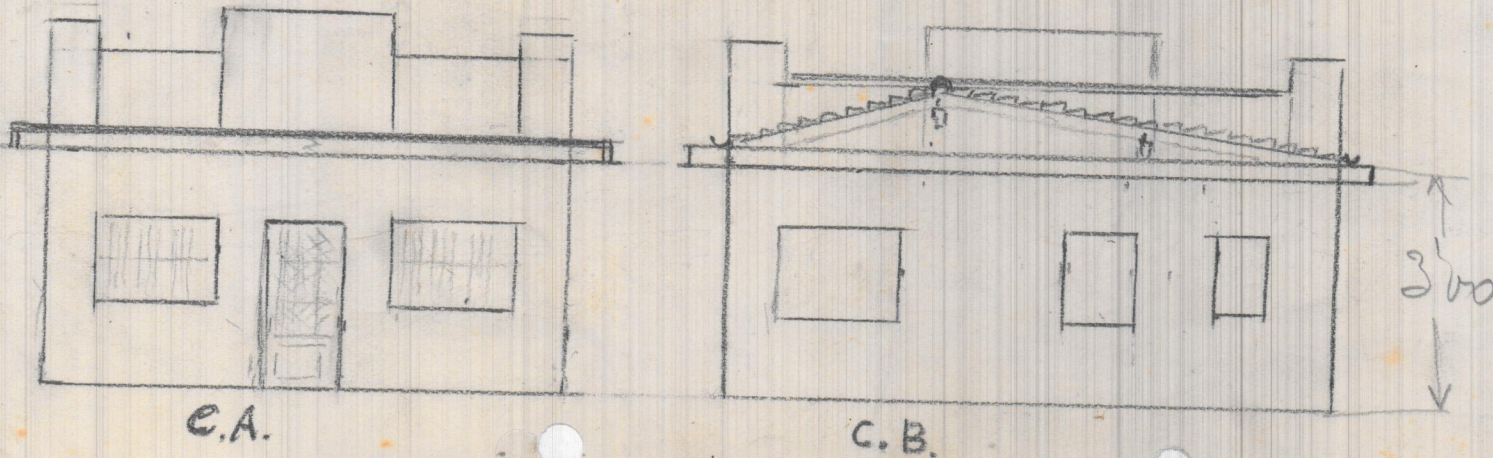
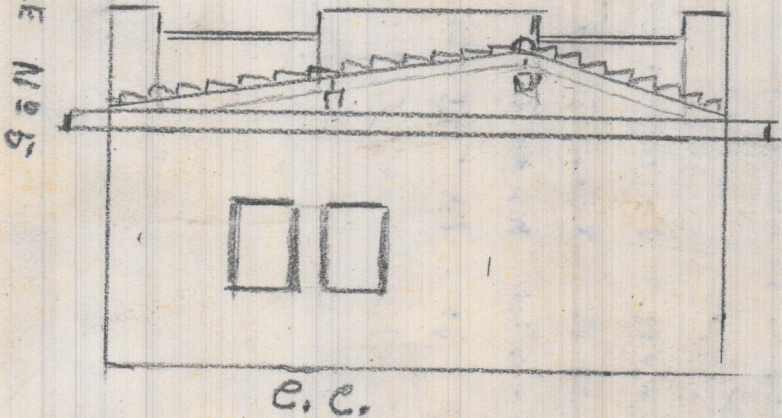
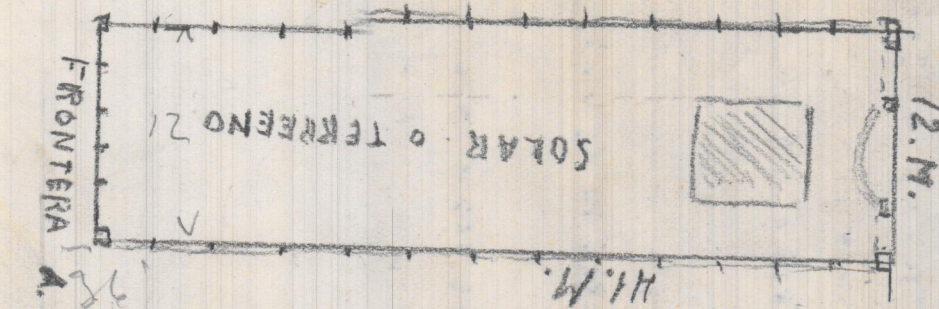


Emplazamiento Escala 1:1000



Valencia 25 Agosto 1940

El Arquitecto.



CALLE N° 5

VIA LIRIA

2.5
2.1
2.5
5.0
5.2
3

15.75