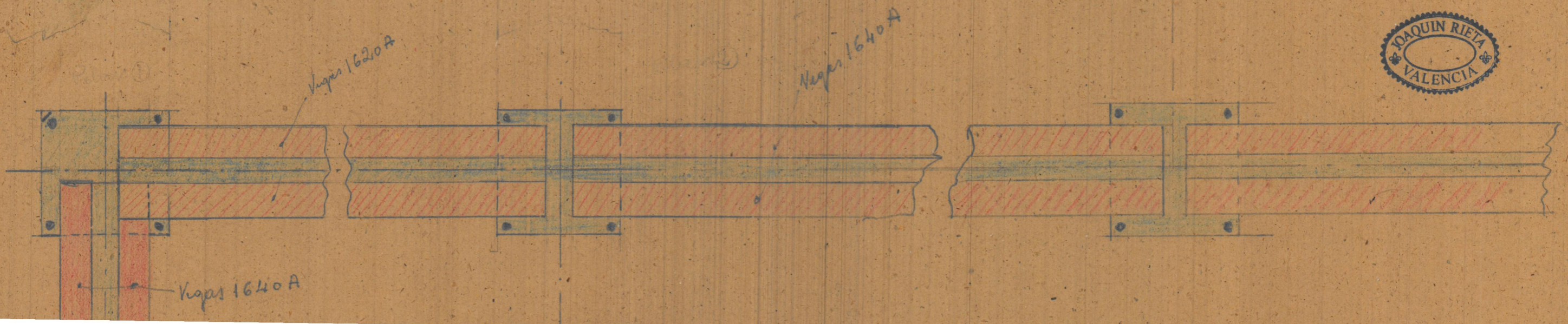
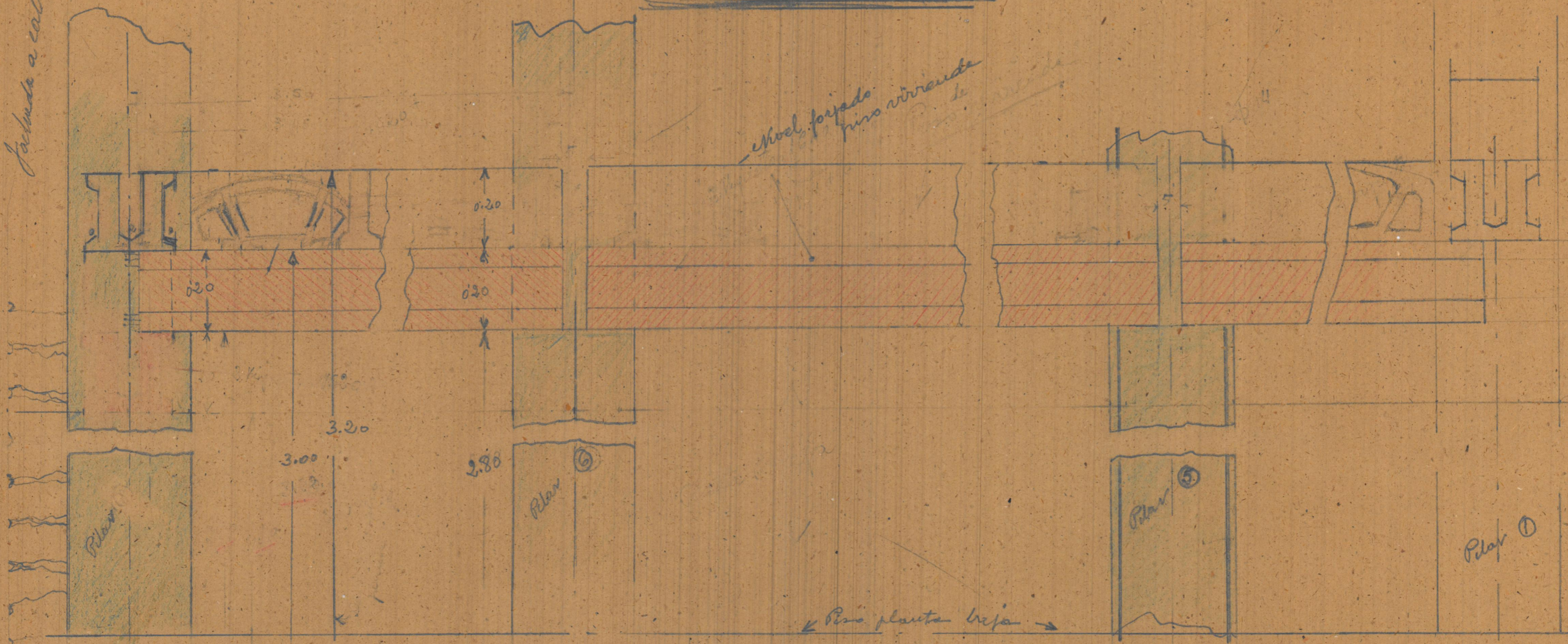
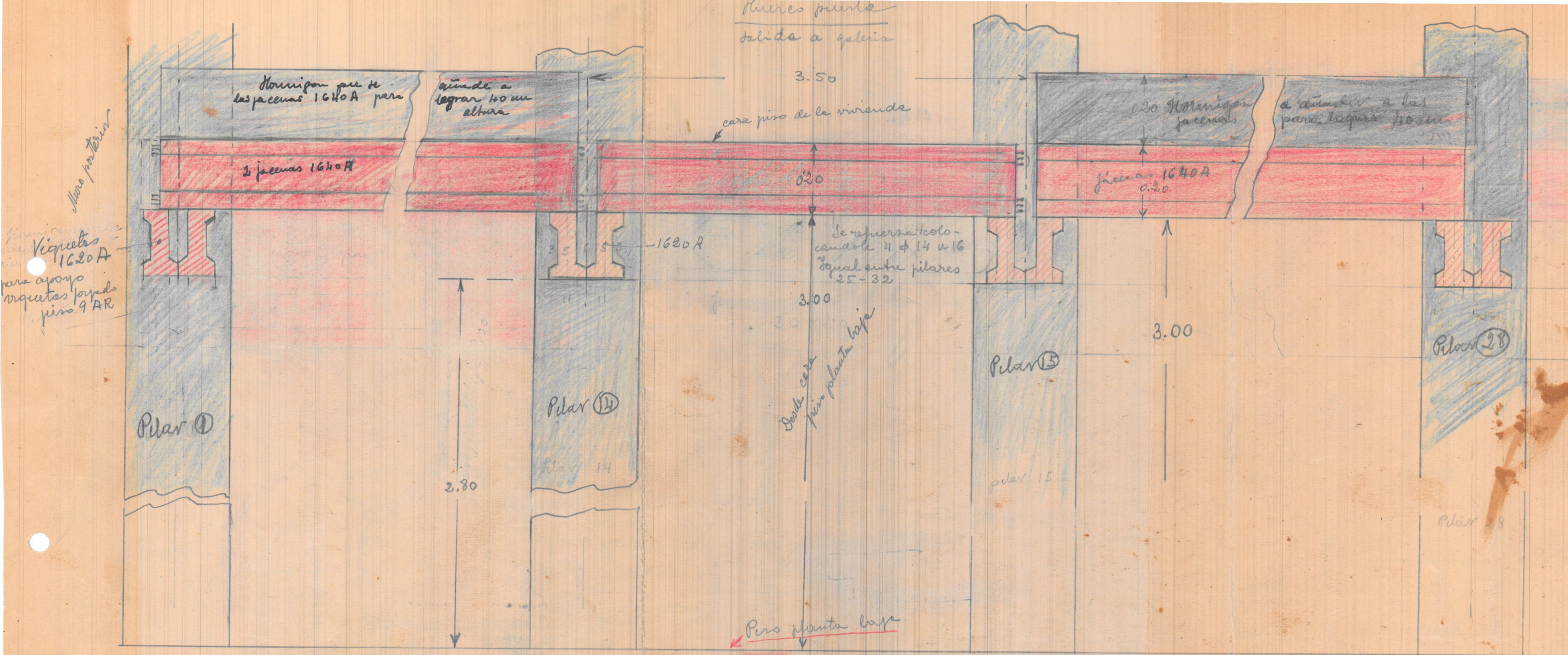


Fachada posterior

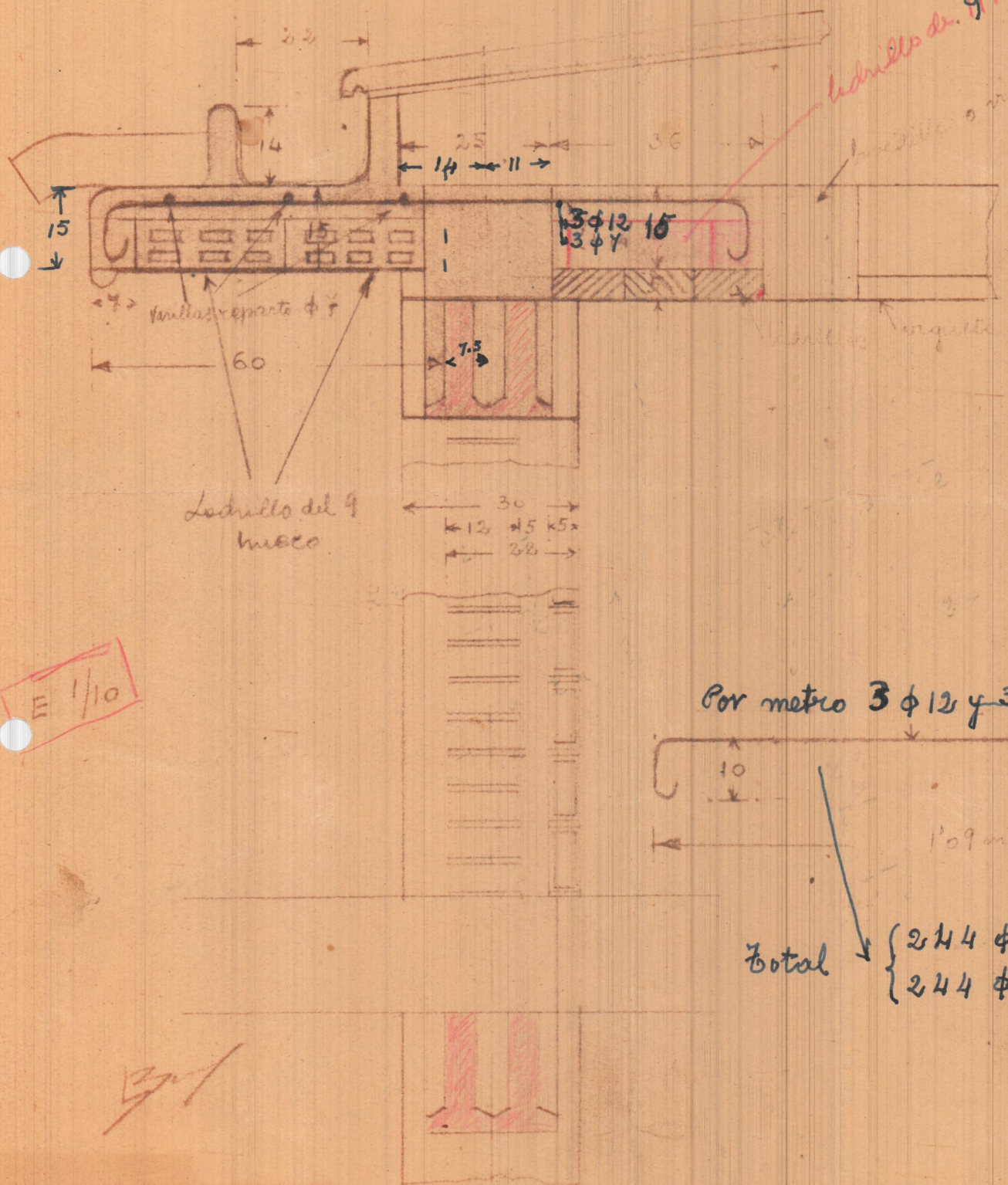
*Fachada a calle*

*Model. forjado  
hizo virreante*





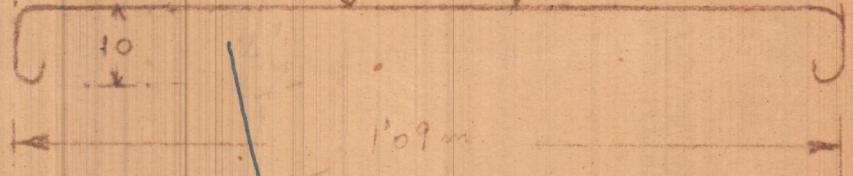
# Cornisa



Ladrillo de 9 x 25 hueco

Ladrillo de 9 hueco

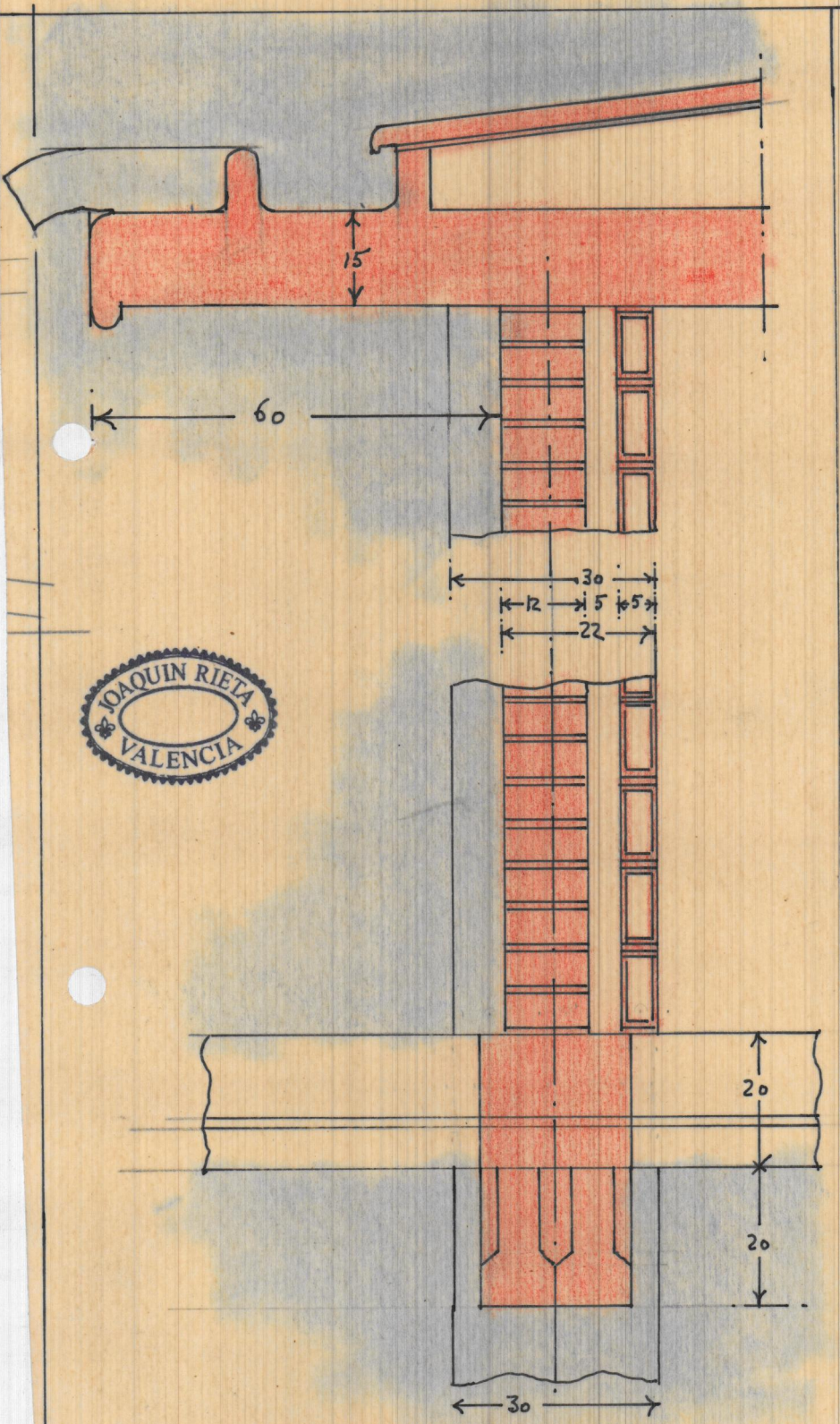
Por metro 3  $\phi$  12 y 3  $\phi$  7



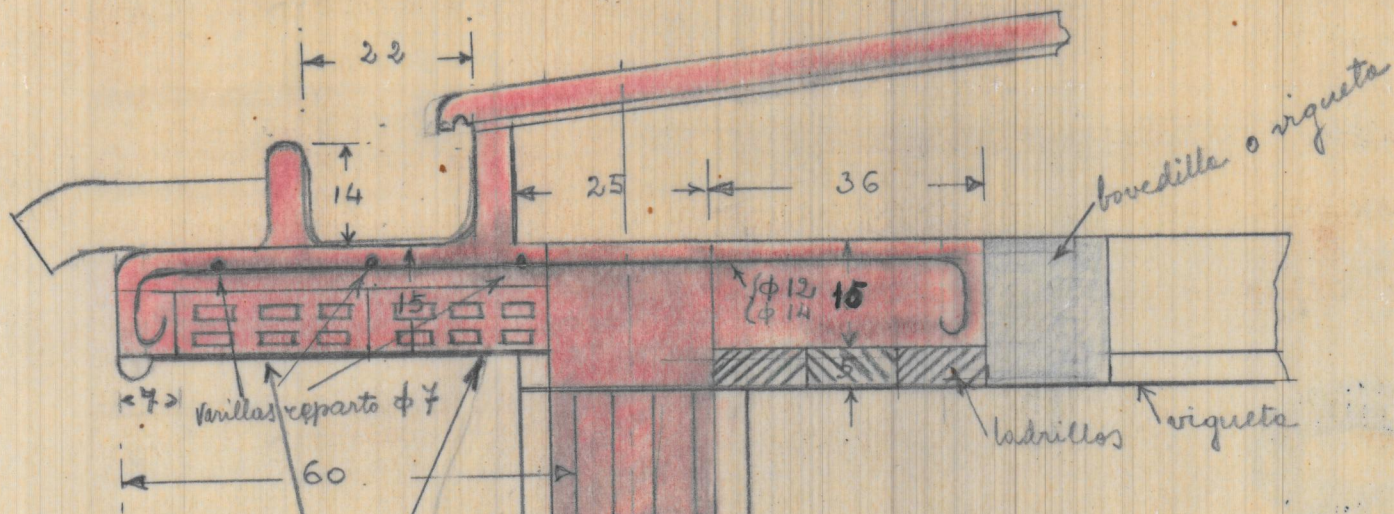
Total  $\left\{ \begin{array}{l} 244 \phi 12 \\ 244 \phi 7 \end{array} \right.$

E 1/10

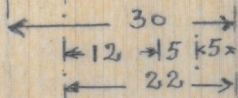
*[Handwritten signature]*



E.-1:10

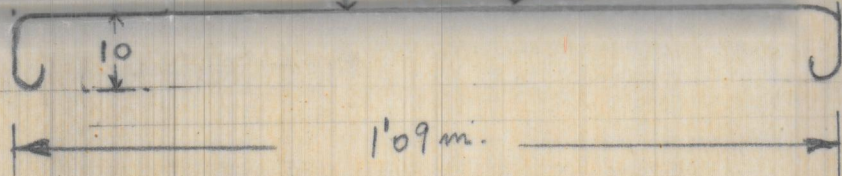


Ladrillo del 9  
mueco



E 1/10

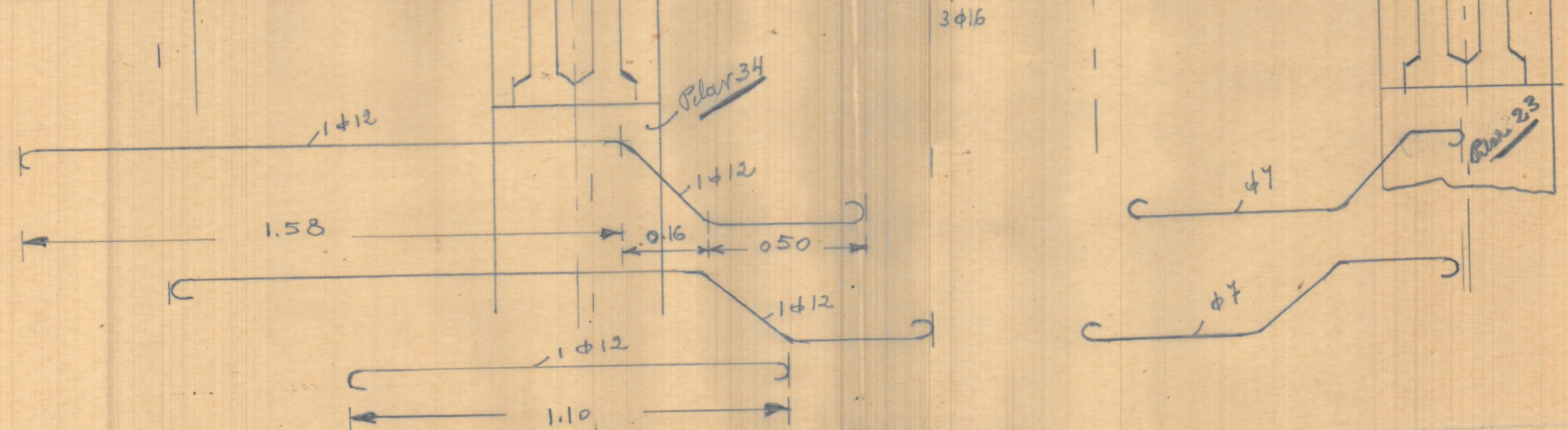
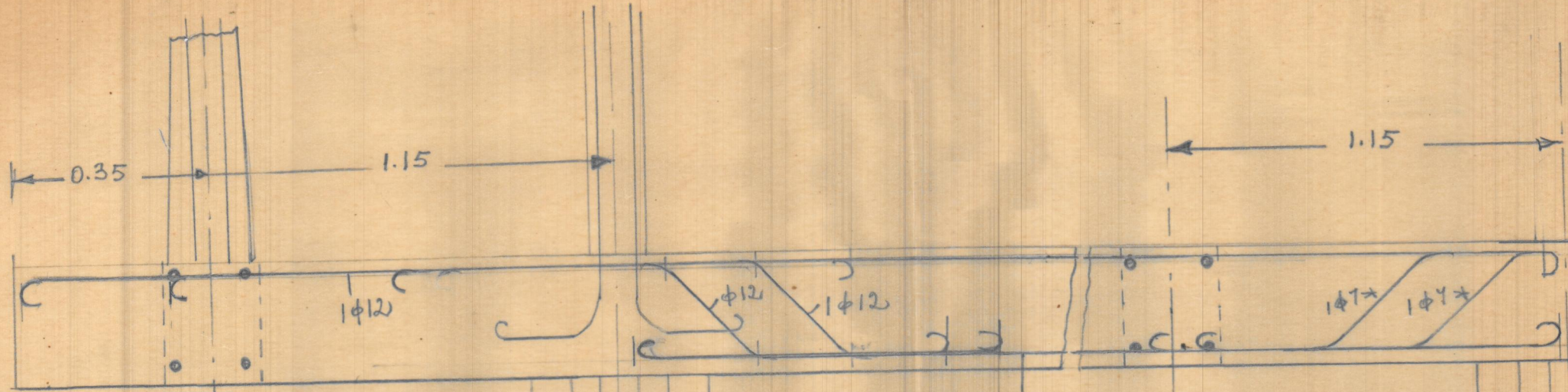
Por metro 3  $\phi 12$  y 2  $\phi 7$



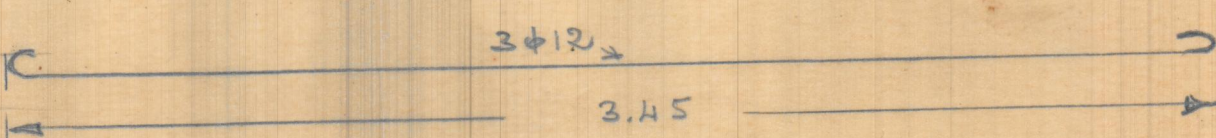
Total 244  $\phi 12$   
244  $\phi 7$

*Handwritten signature or initials*





Se repite la misma disposición en volado y pilares 22 y 21 además del volado del pilar 14



*Galarij*



(14.00) →

14.12

① 3.48	② 3.49	③ 3.48	④ 3.55	⑤ 3.51	⑥ 3.48	⑦
⑫ 3.50	⑬ 3.52	⑭ 3.50	⑮ 3.55	⑯ 3.54	⑰ 3.49	⑱
⑮ 3.50	⑯ 3.51	⑰ 3.52	⑲ 3.55	⑳ 3.53	㉑ 3.48	㉒
⑳ 3.53	㉑ 3.55	㉒ 3.52	㉓ 3.53	㉔ 3.53	㉕ 3.51	㉖
㉗ 3.48	㉘ 3.52	㉙ 3.53	㉚ 2.54	㉛ 3.55	㉜ 3.48	㉝
㉞ 3.46	㉟ 3.55	㊱ 3.51	㊲ 3.53	㊳ 3.56	㊴ 3.56	㊵

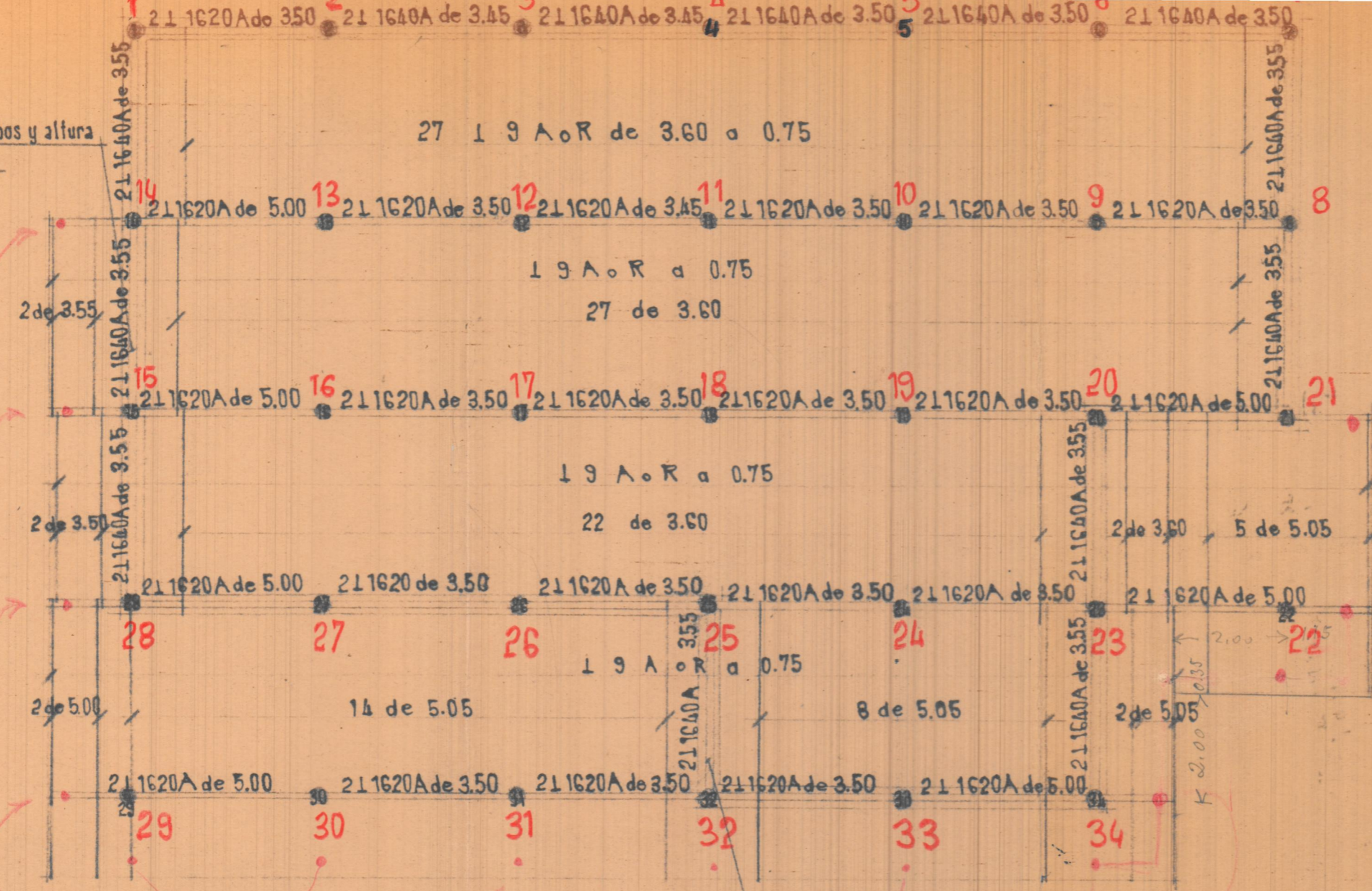
20.96 (21.00)

17.60 (17.50)

10.40 (10.50)



Sin estribos y altura forjado



*14 m. Plant. Incompleta*

PLANTA

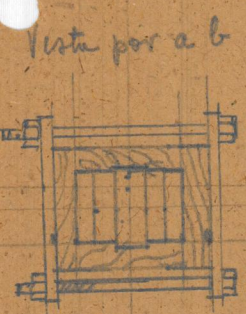
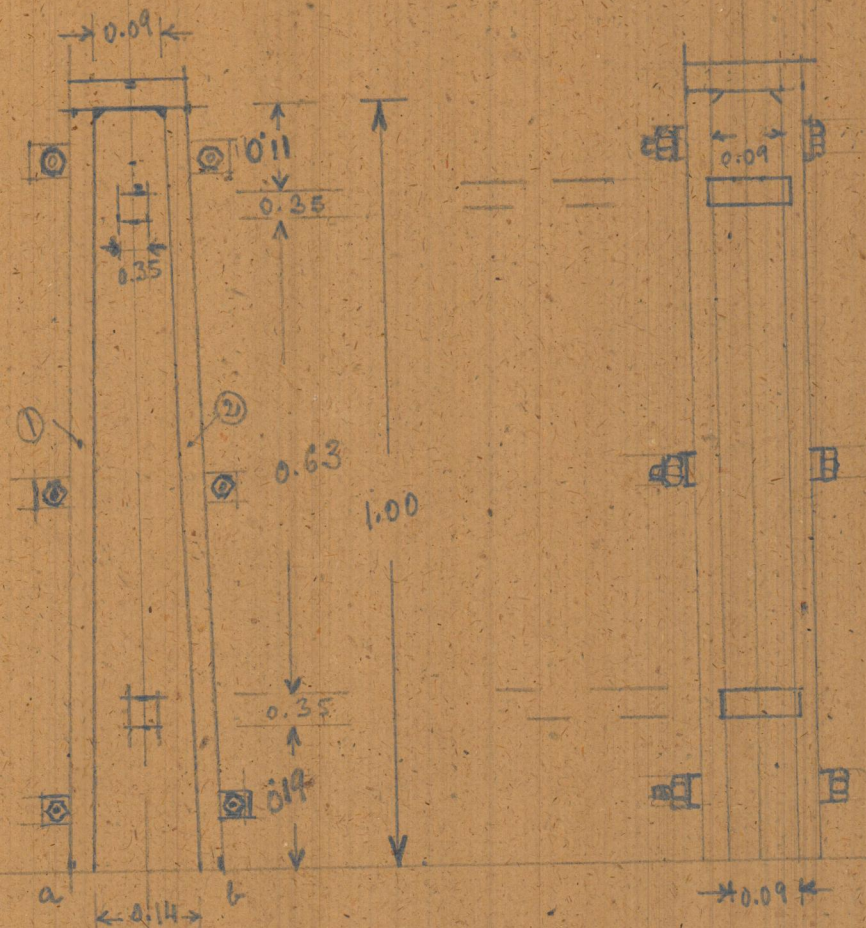
IMPORTANTE

Antes de formular los pedidos  
 rogamos que se indiquen  
 en la obra los largos efectivos  
 que deben tener las  
 viguetas para evitar trans-  
 formos derivados de errores  
 en los planos o discrepancias  
 entre los mismos y la obra.

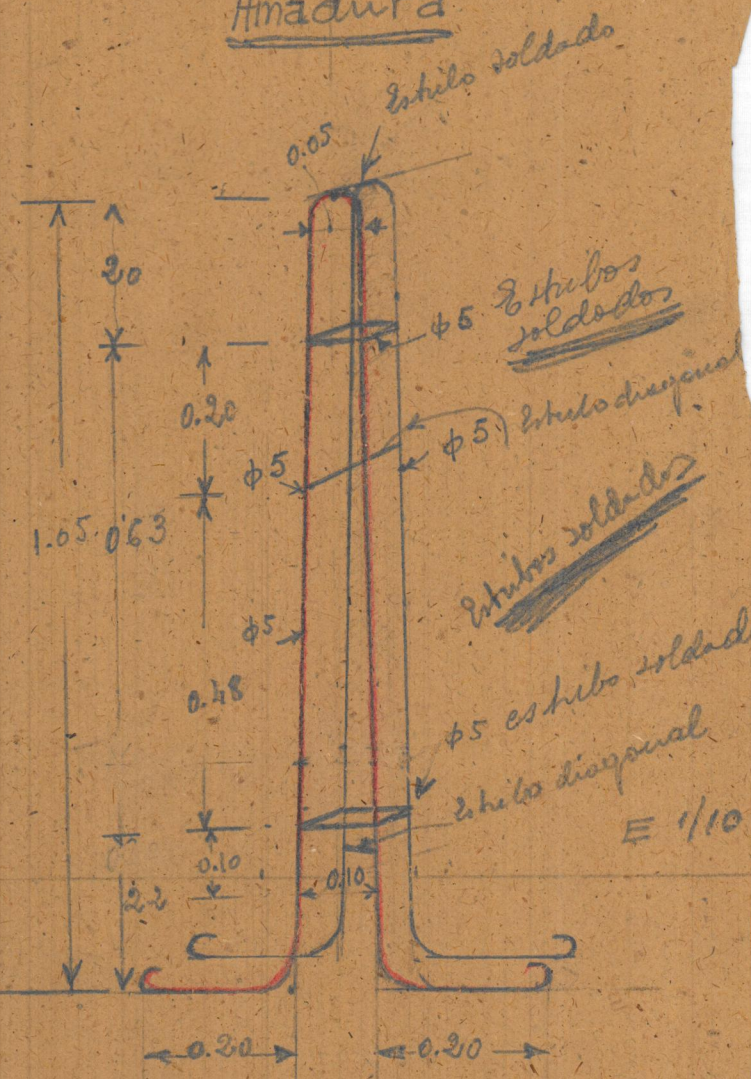
Propietario Sr. MARTINEZ		Arquit. D. JOAQUIN RIETA			
Constructor					
Dibujado	Comprobado	Fecha	Escala	Sustituye a	Sustituido por
		20-9-58	1:100		
S. A. MATERIALES Y OBRAS VALENCIA PRESUPUESTOS		Viguetas Freyssien chalet de NAQUERA - Valencia.		N.º 1-9-11.186 1-8-11.187	

lucrado de perfil

lucrado de frente



Amadura

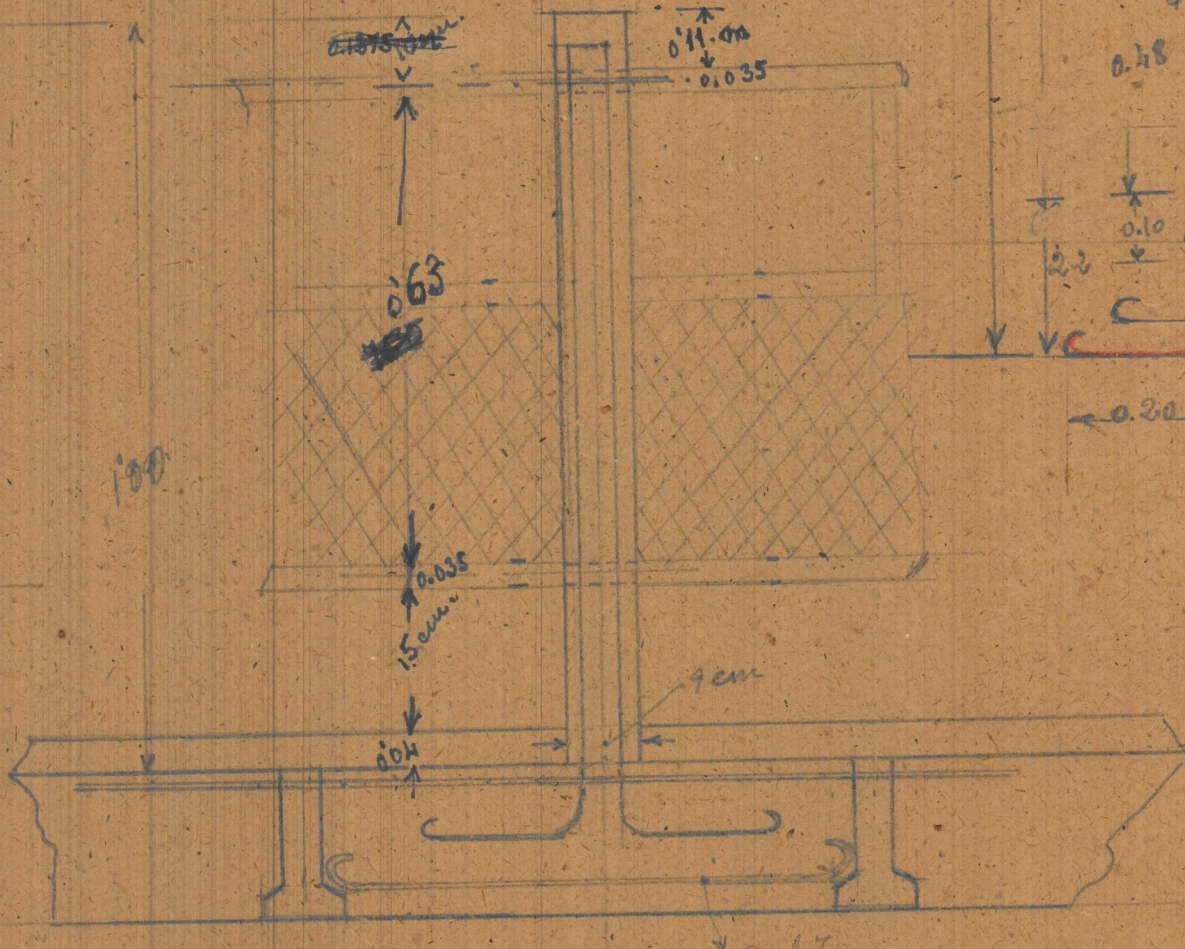
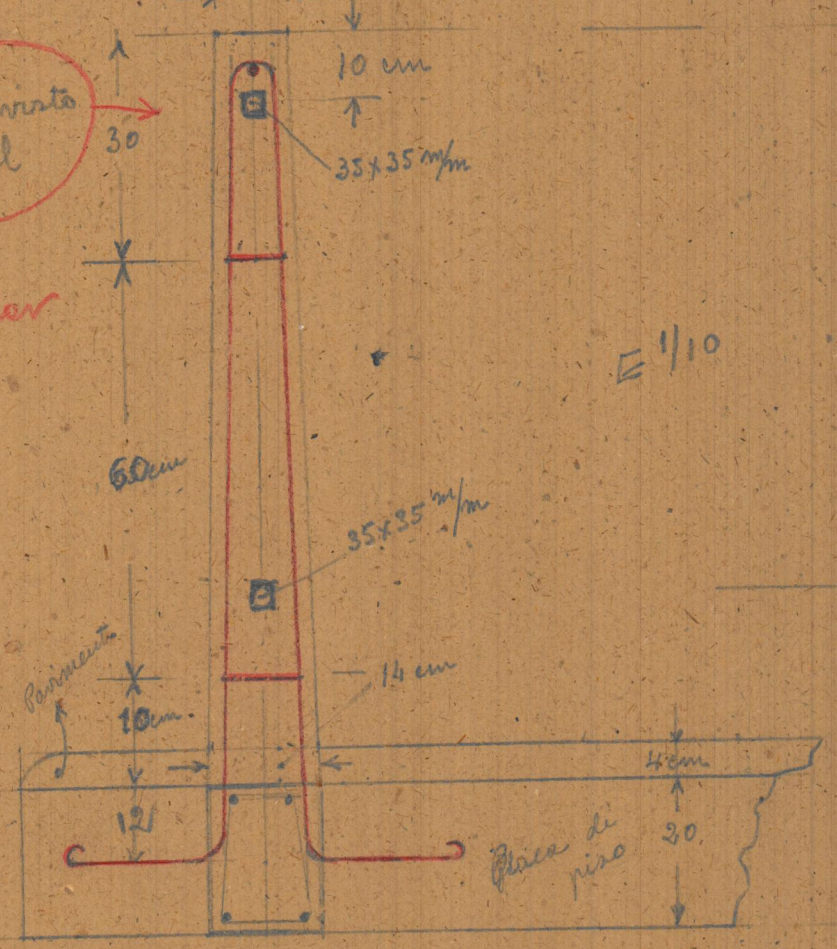


Pilares barandilla terraza vivienda

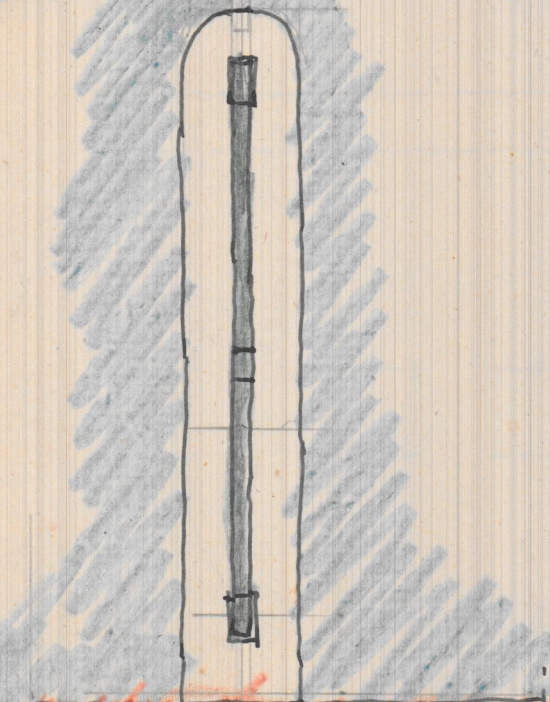
Pilarete visto de frente

Pilarete visto de perfil

Se hace rectangular



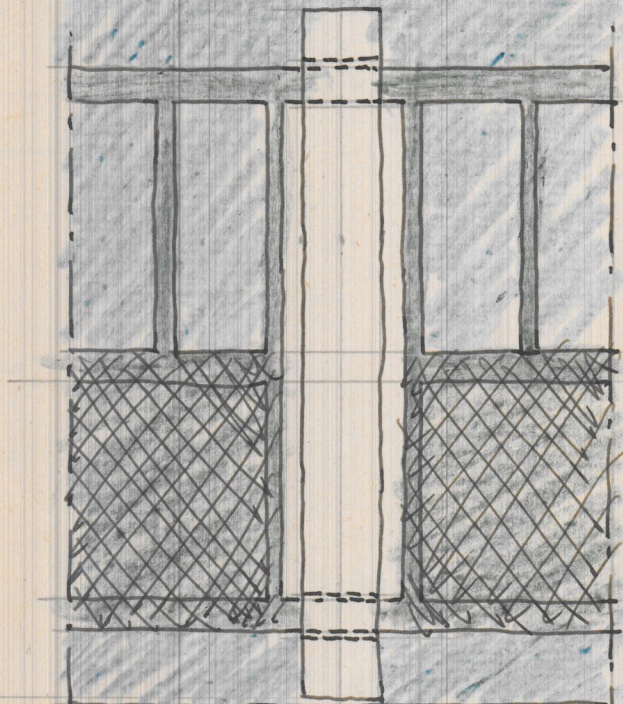
267



JACENA QUE  
UNE LAS CABEZAS  
DE LAS VIGUETAS

PLACA

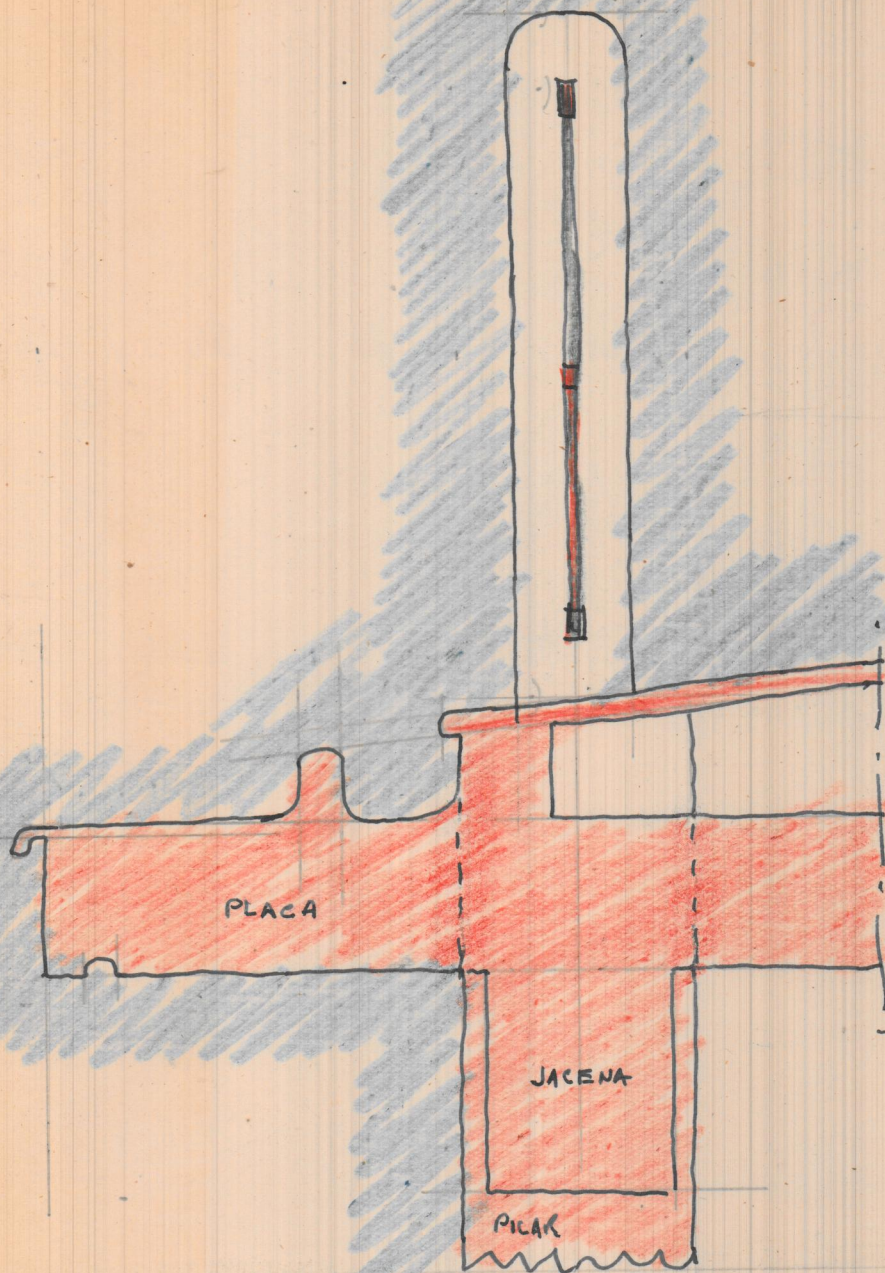
SECCION



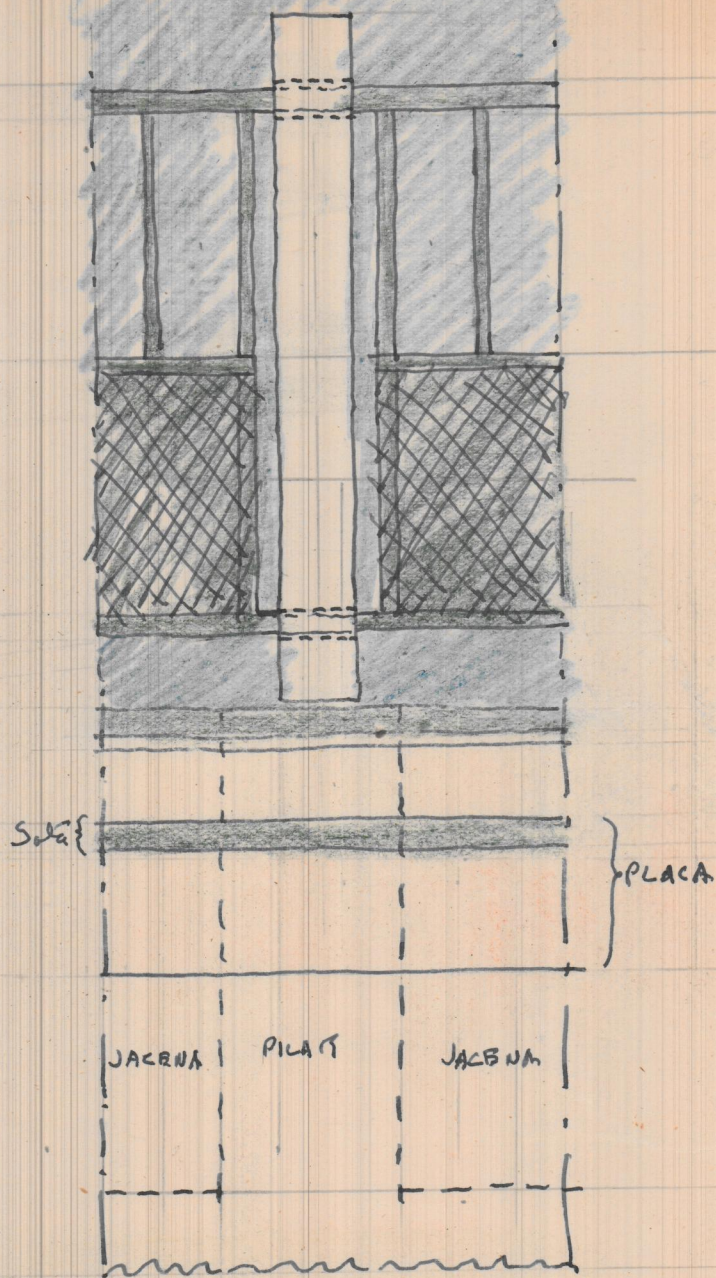
FRENTE

PILARES DE SUJECION DEL ANTEPECHO EN LA TERRAZA DAJA

E. - 1:10



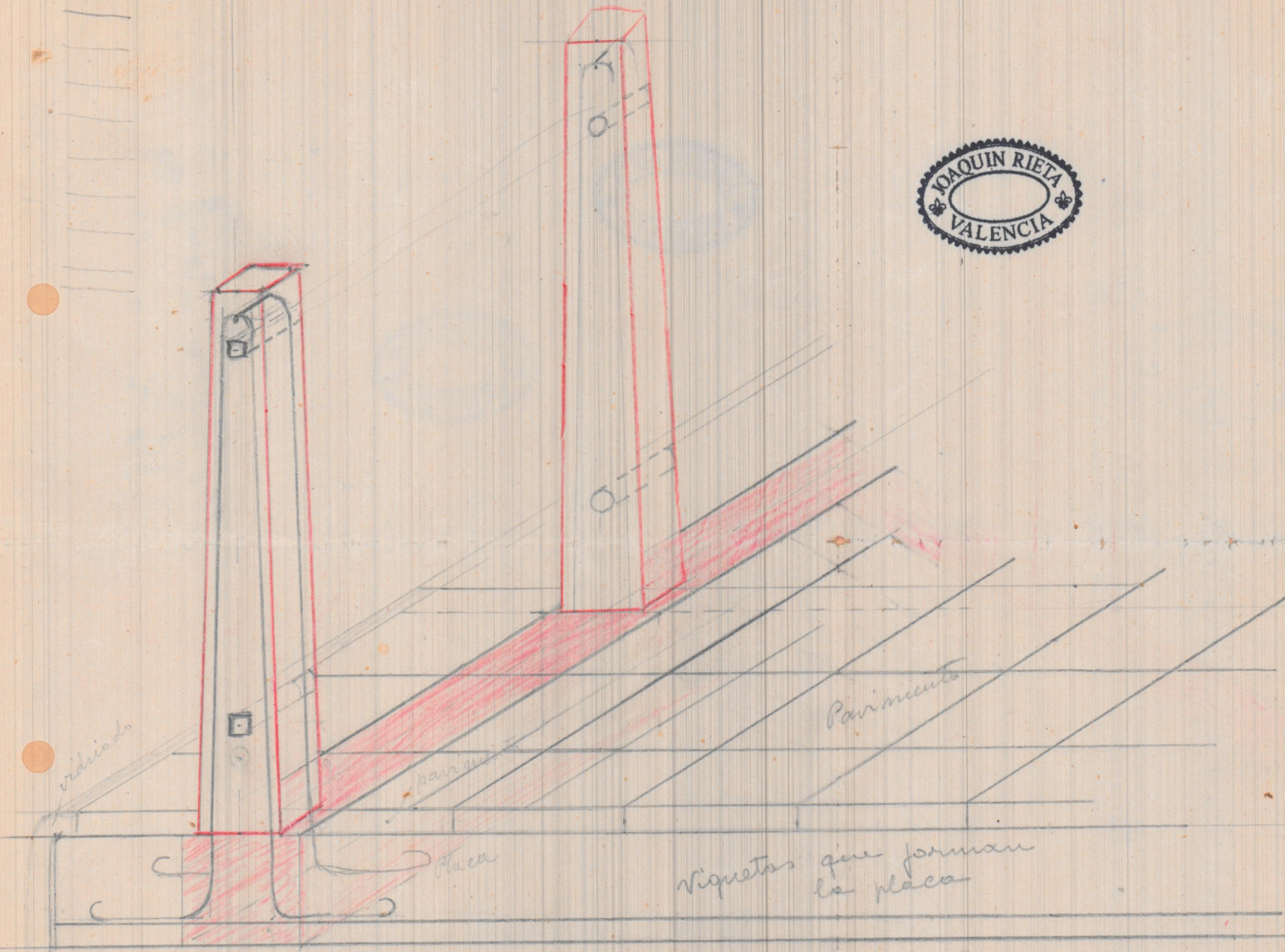
SECCION



FRENTE

PILARES DE SUBSECCION DEL ANTEPECHO EN LA TERRAZA ALTA  
E. - 1:100





vidriado

paranete

Parinments

placa

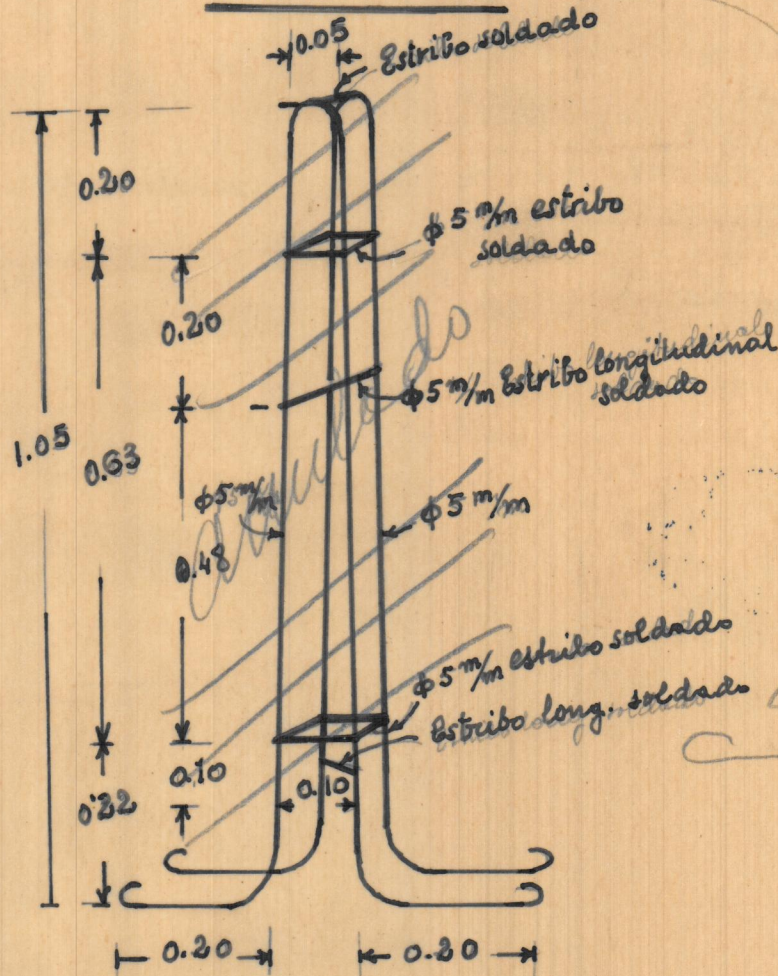
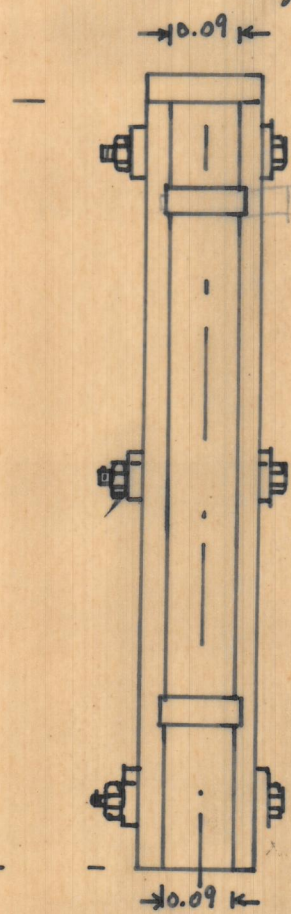
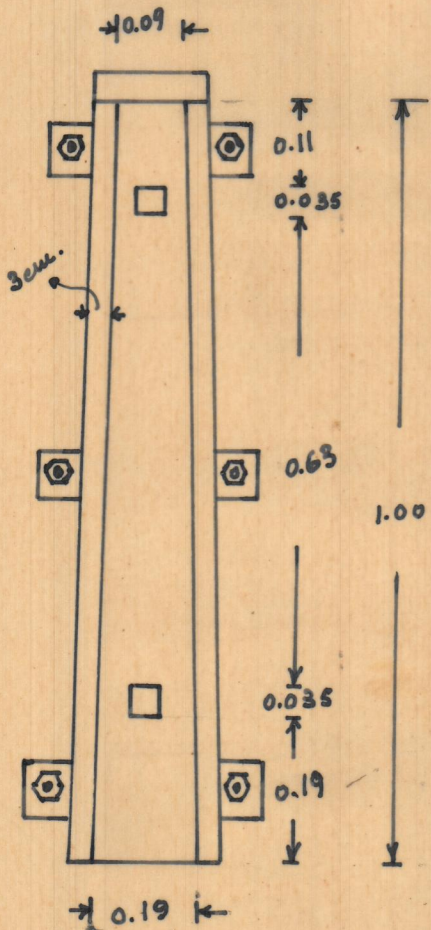
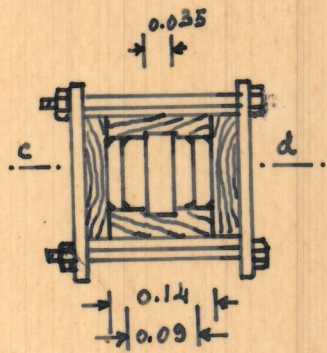
viguetas que forman la placa

taclera que une las suberas viguetas

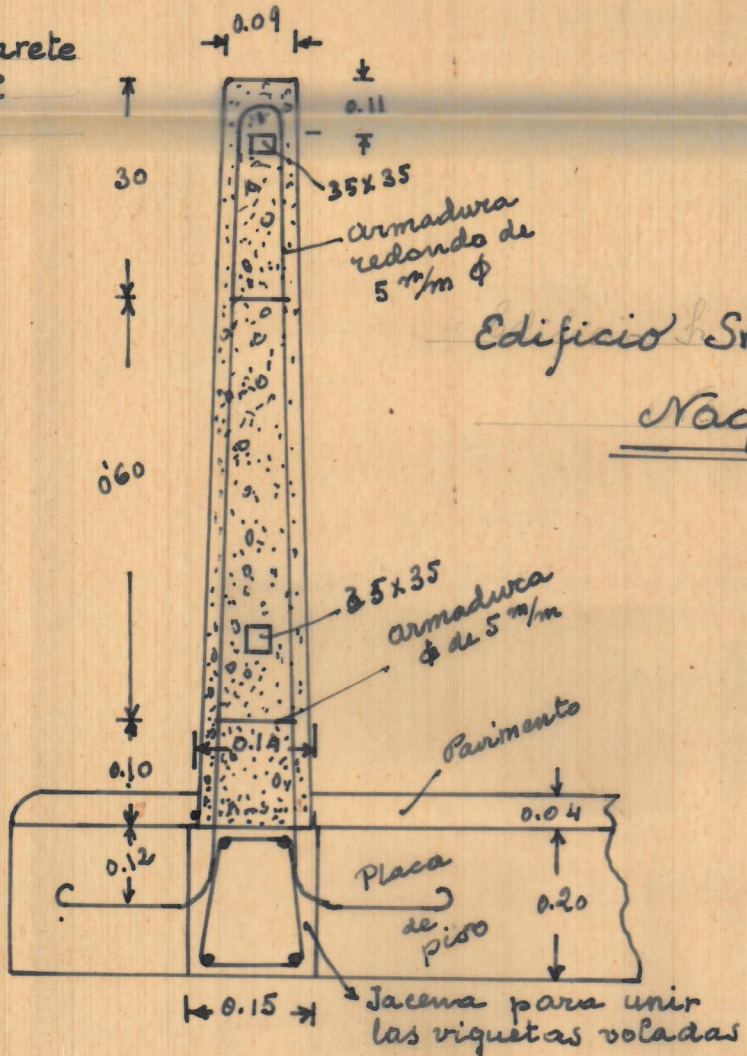
Encofrado de perfil (c-d)

Encofrado de frente

Armadura  
Amadura



Sección de pilarete visto de perfil



Edificio Sr. Martinez  
Naquera

Sección vista de frente

