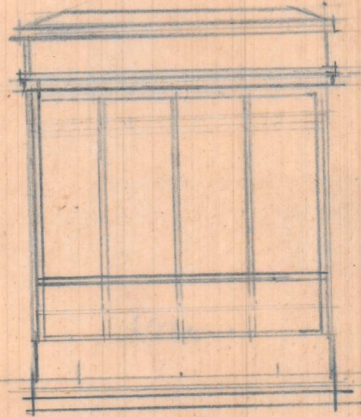


Don Lourdes Mateo - C. Rusafa

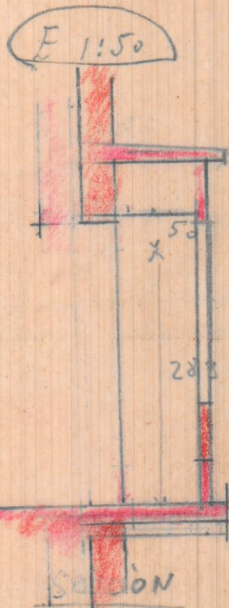
CONSTRUCCION DE UN MIRADOR  
UTILIZANDO LA REPIJA ACTUAL DEL BALCON

ANCHURA 35

1<sup>a</sup> IZQUIERDA



FRENTE

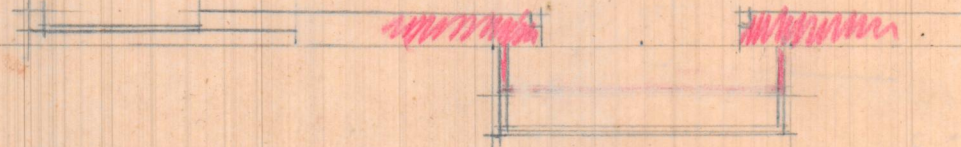


vertical ch

Don Lourdes Mateo - Calle Rusafa

Planta

h. 1.50



PLANTA