

MEDIANERA EDIFICIO

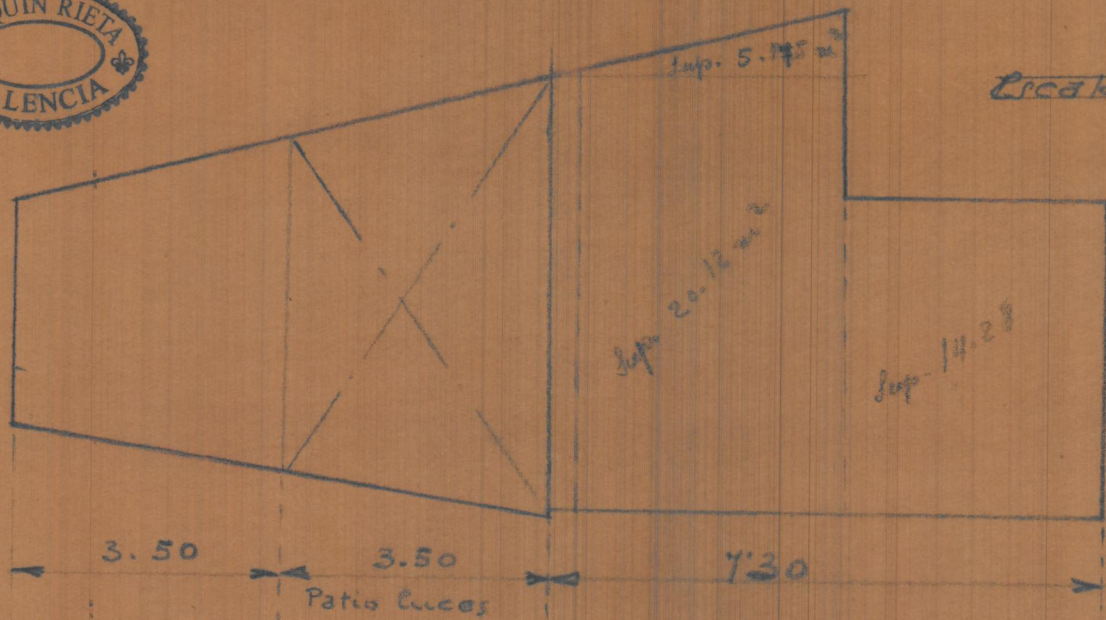
CALLE SAN VICENTE

Sup. total 70.31 m^2

Patio luces 17.59 m^2



Escala 1:100



3.50 3.50 7.30
Patio luces

0.27 0.30 0.13
Sup. 30.73 m^2 Sup. 39.58 m^2

$$S = \frac{10.90 \times 2.55}{2} = 13.89$$

$$S = \frac{10.9 \times 4.2}{2} = 22.84$$

$$S = \frac{11.7 \times 1.5}{2} = 8.77$$

$$S = \frac{8.1 \times 2.6}{2} = 10.53$$

$$40.31 \text{ m}^2$$

70
25

525
70
2.55



Destruendo

$$S = \frac{6.3 \times 2.4}{2} = 7.56$$

$$S = \frac{6.3 \times 3.2}{2} = 10.08$$

$$\underline{\underline{17.64 \text{ m}^2}}$$

