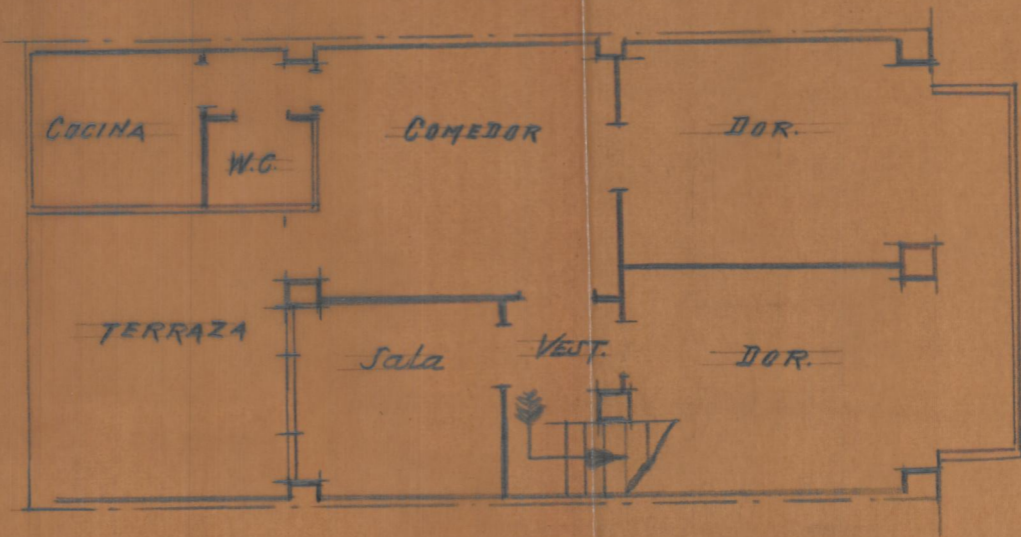
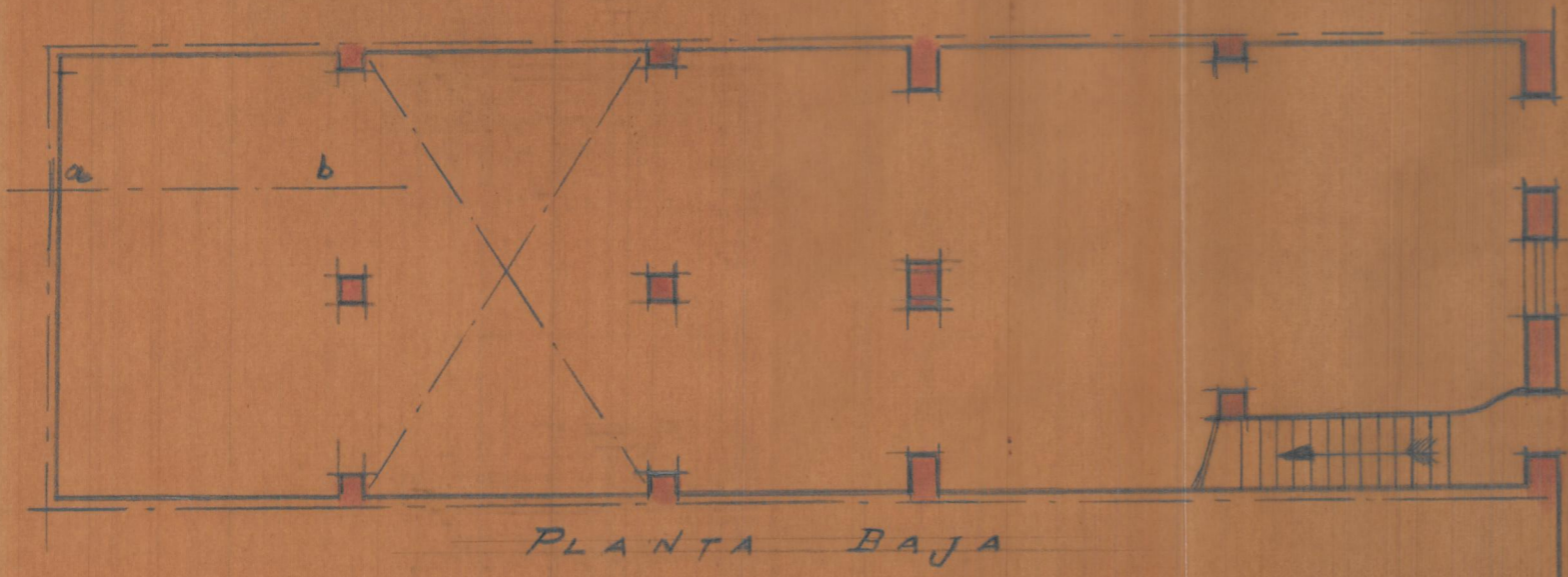
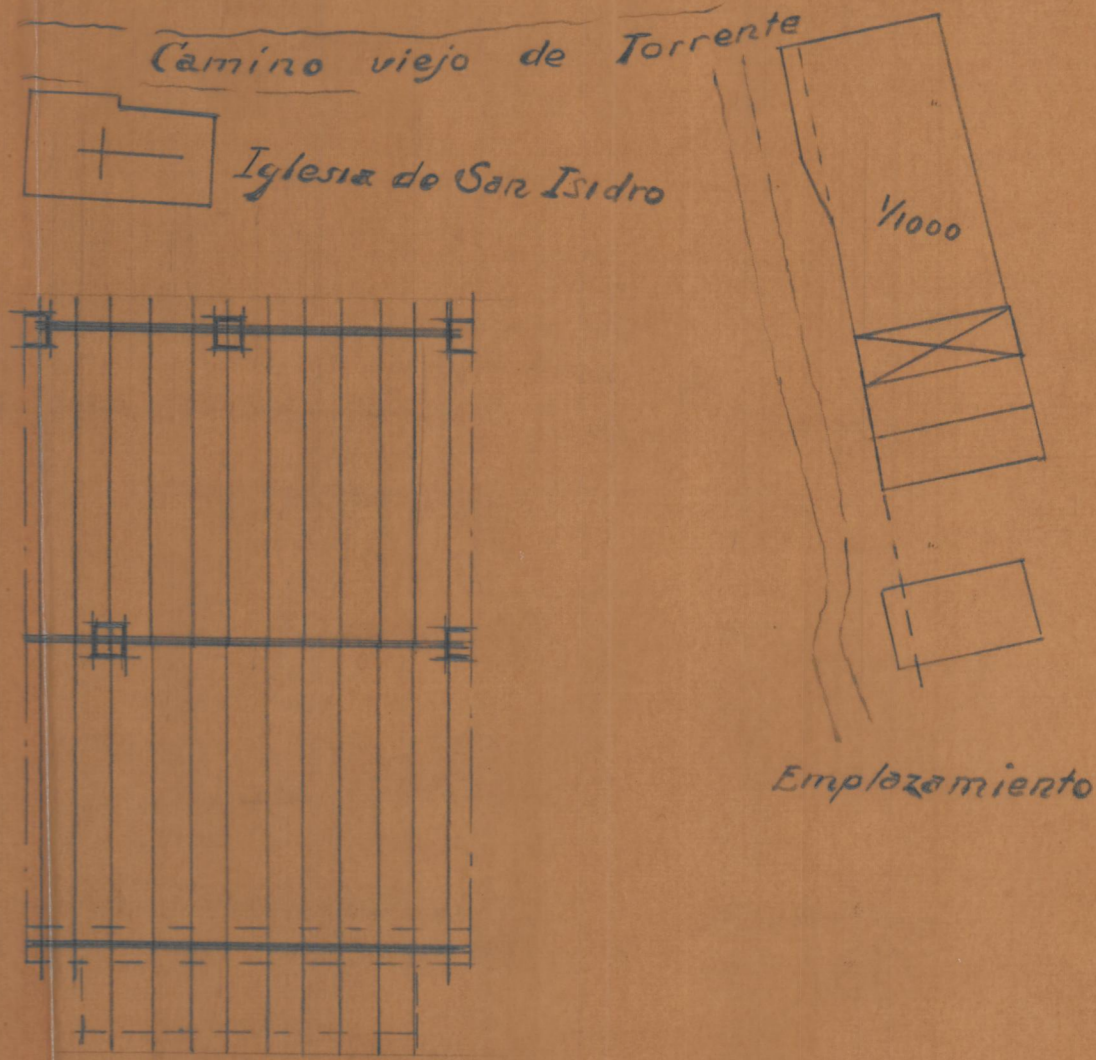
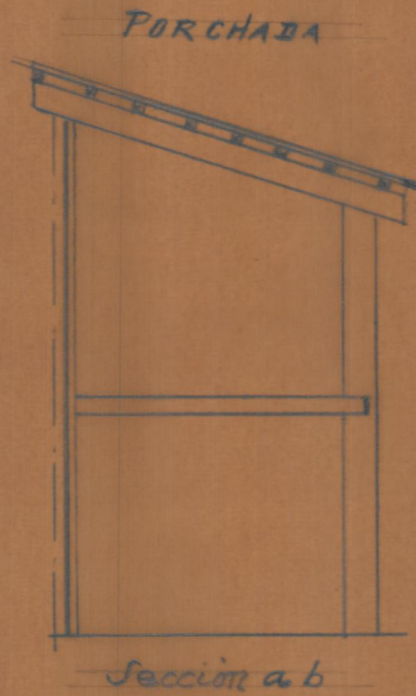


PROYECTO DE EDIFICIO  
AGRICOLA EN BARRIADA  
Iglesia de San Isidro  
VALENCIA

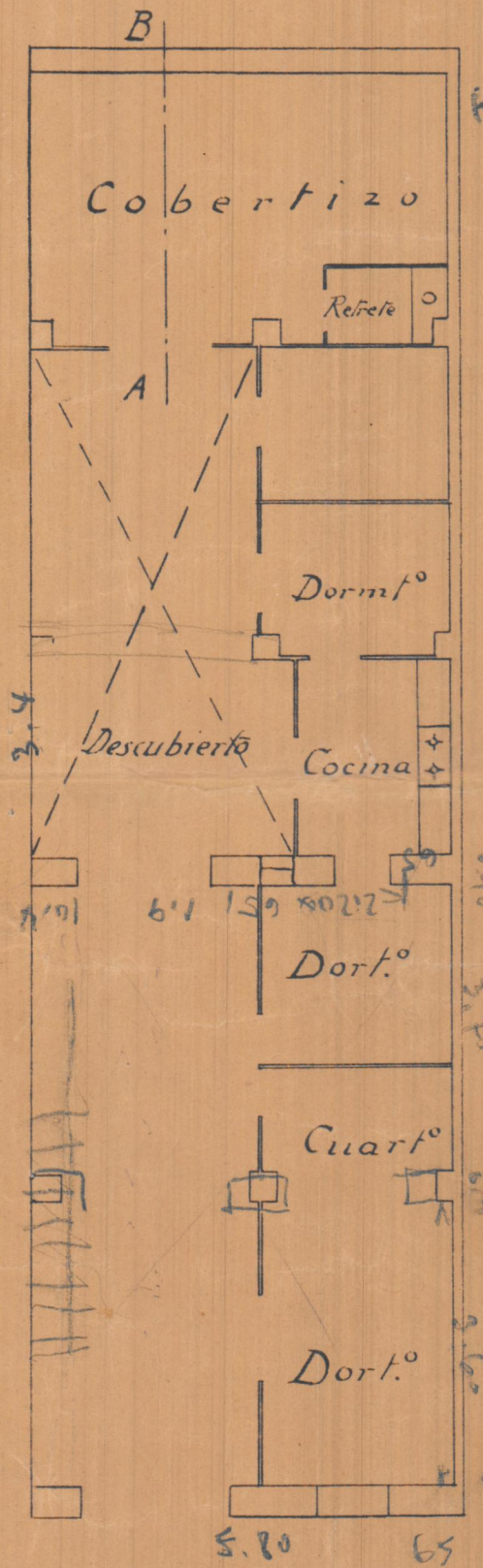
Jacena con  
φ 15mm



Escala 1:100  
Valencia Marzo 1944  
El Arquitecto



Planta

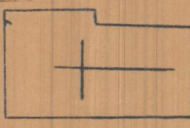


para el agua de la  
 cisterna de San Isidro  
 y para el agua de  
 la cisterna de la casa

65  
 22.5  
 19.50  
 59.0

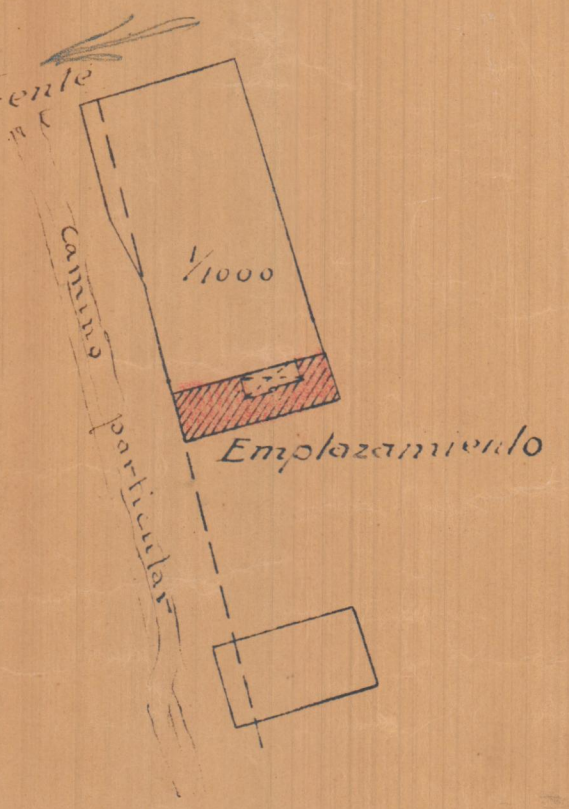
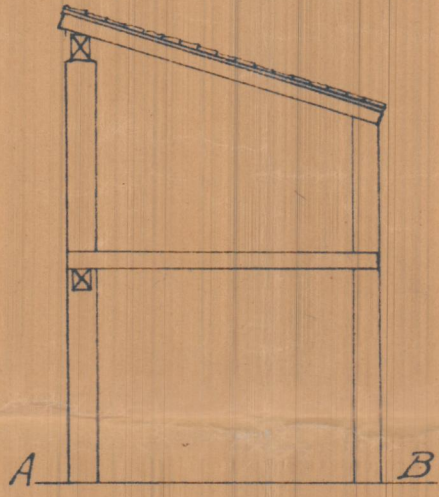
E 1:100

Camino viejo de Torrente

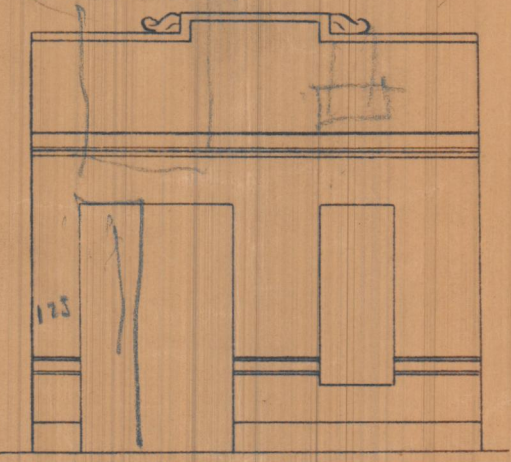


Iglesia de San Isidro

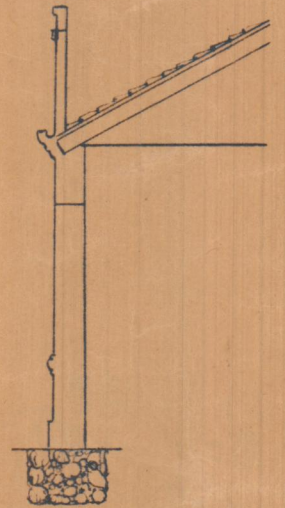
Sección A B



Fachada

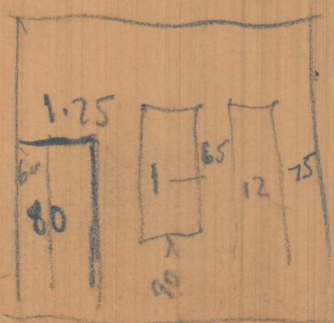


Sección



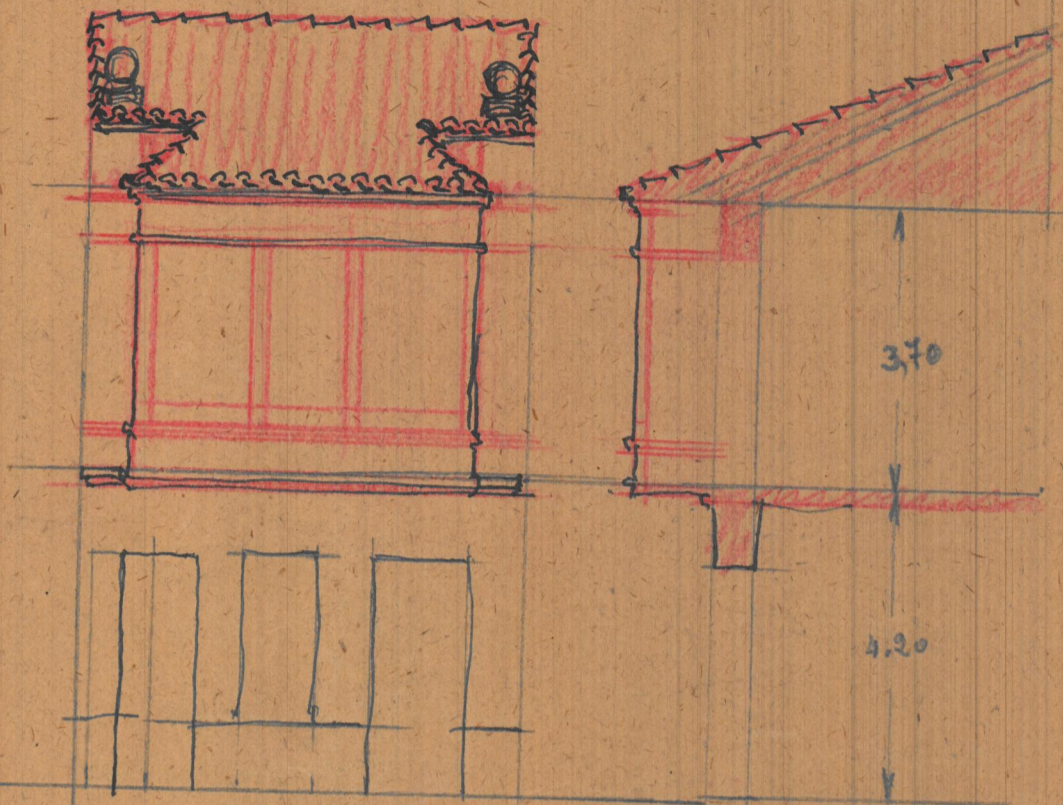
Valencia Octubre 1931

*M. M. M. M.*  
 No de Obras



39  
 95  
 48.5  
 80  
 56

José Martí Reyate  
 C. Pau 11  
 Yofenia San Ysidro

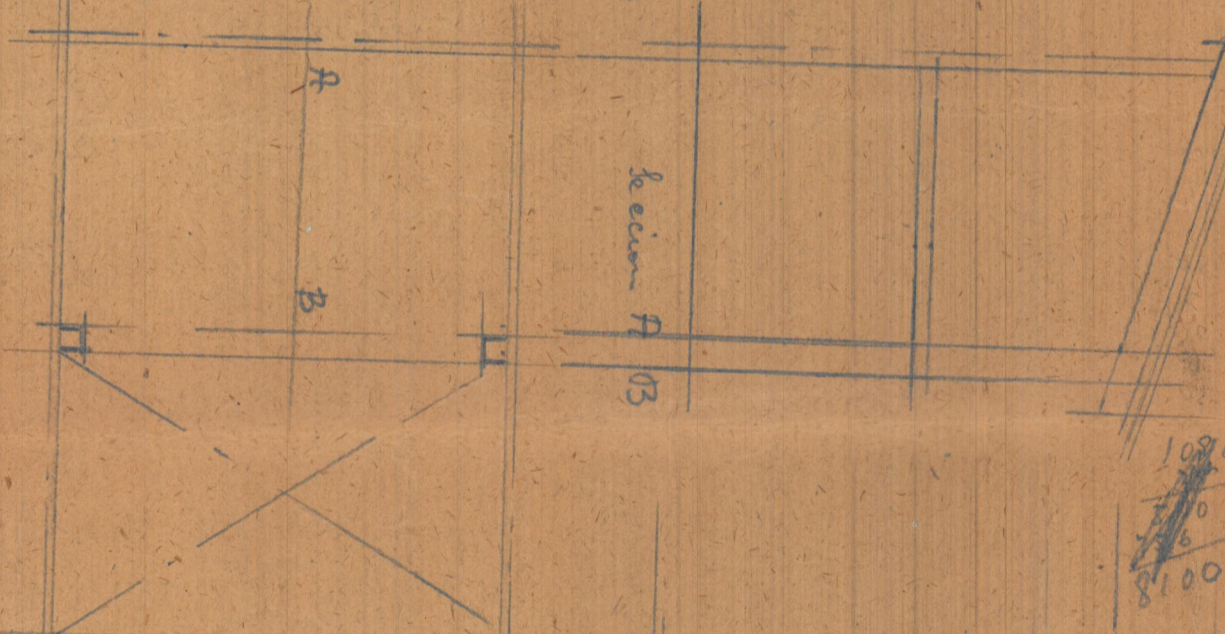


Fachada

E 1:100

Sección

33  
22  
45  
45  
90



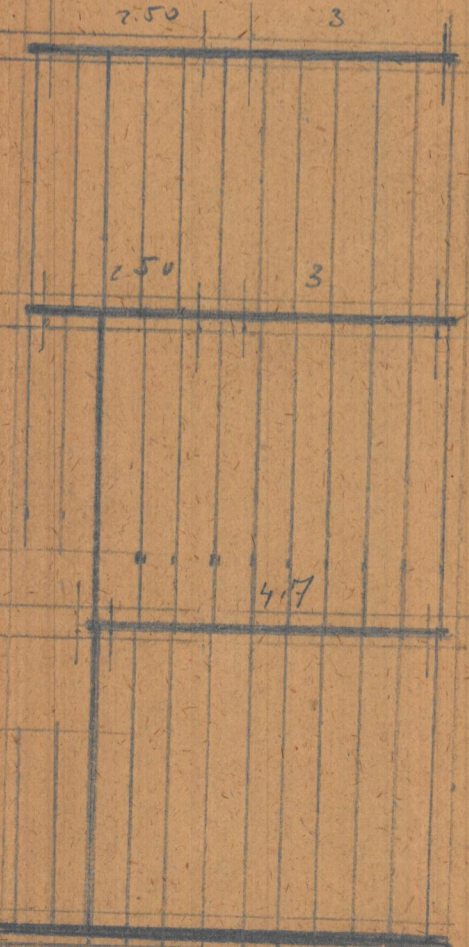
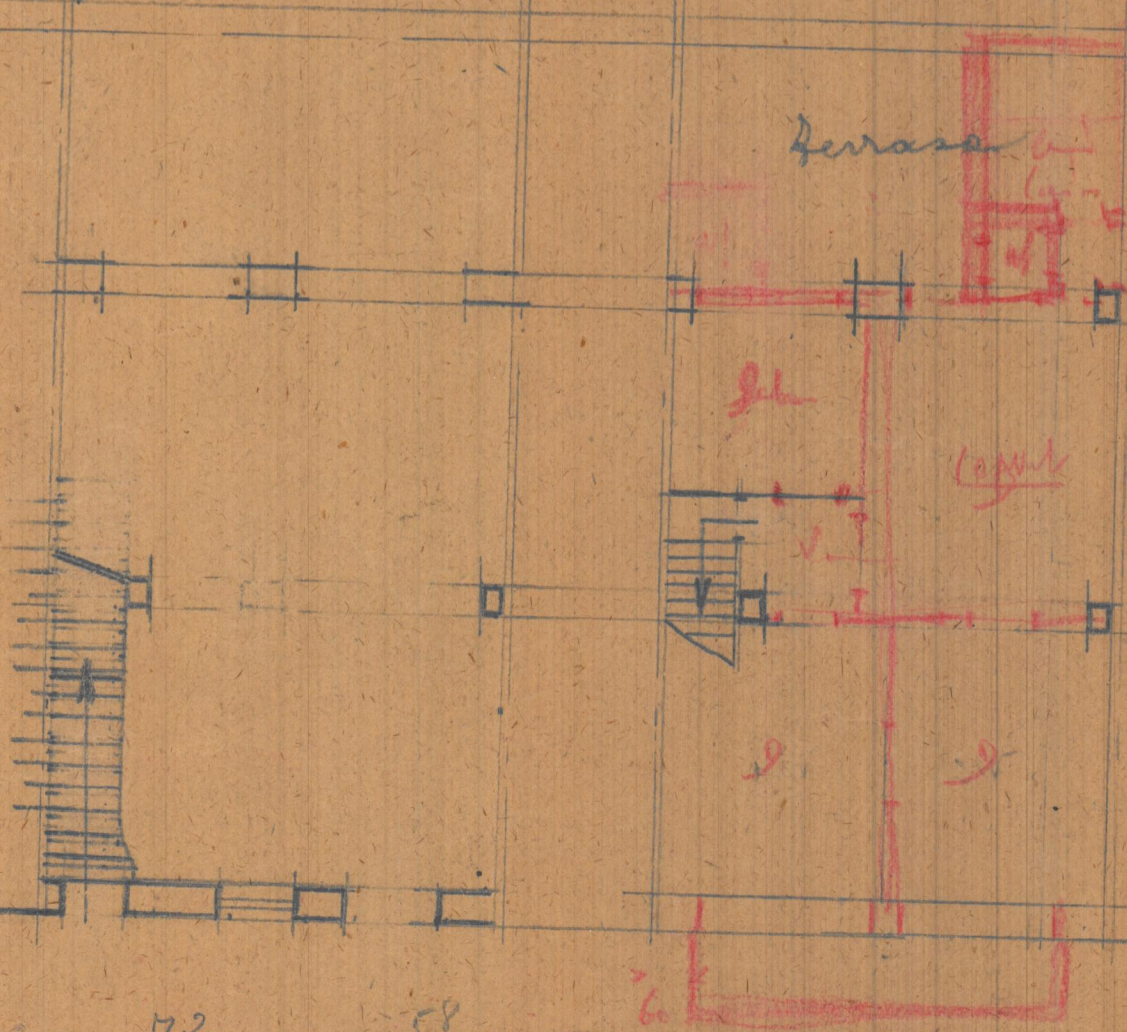
lup. lator 20 x 8 = 160  
 " edificio lup 12 x 8 = 96  
 " alts 9.5 x 8 = 76  
 " 2.2 x 22 = 48 = 58  
 " pndula 36 = 36

58 x 30 = 17400  
 72 x 100 = 7200  
 36

28300

tempo 1<sup>a</sup> sup 2<sup>o</sup> 5.7  
 28200 x 5.7 = 1607.40.-

10900  
 70  
 76  
 8100



See 45x30  
 Rad. φ 15

See 45x30  
 - 5 φ 15

Substrato piso

72  
36  
108

58  
55  
113

21  
25  
105  
22  
07.25