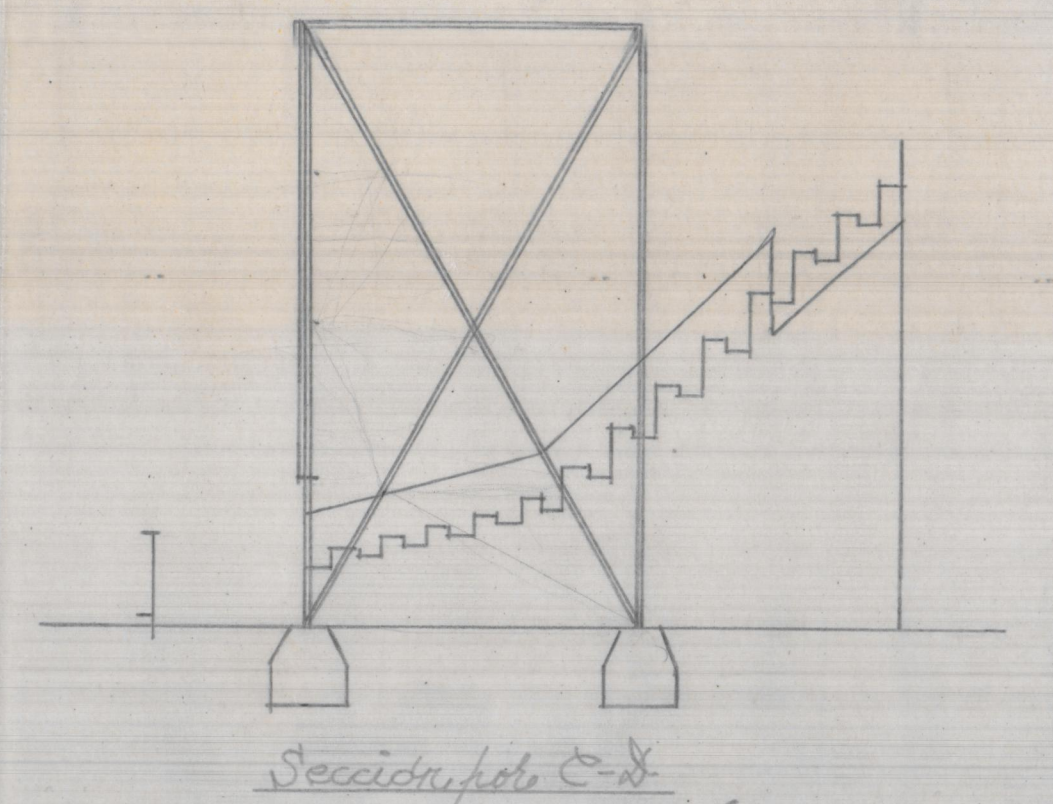
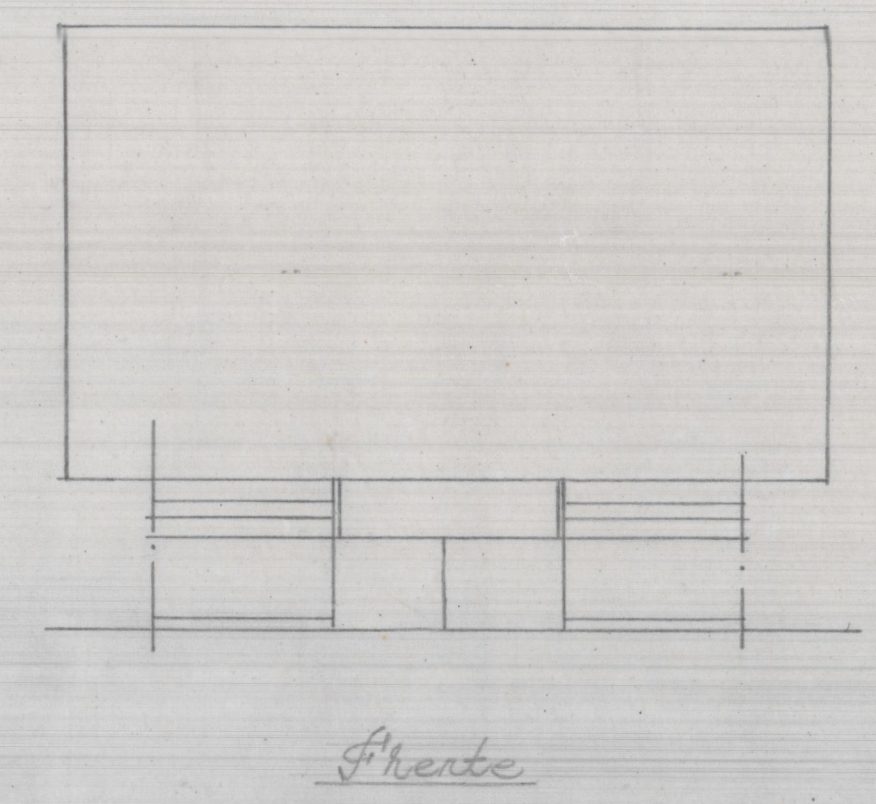
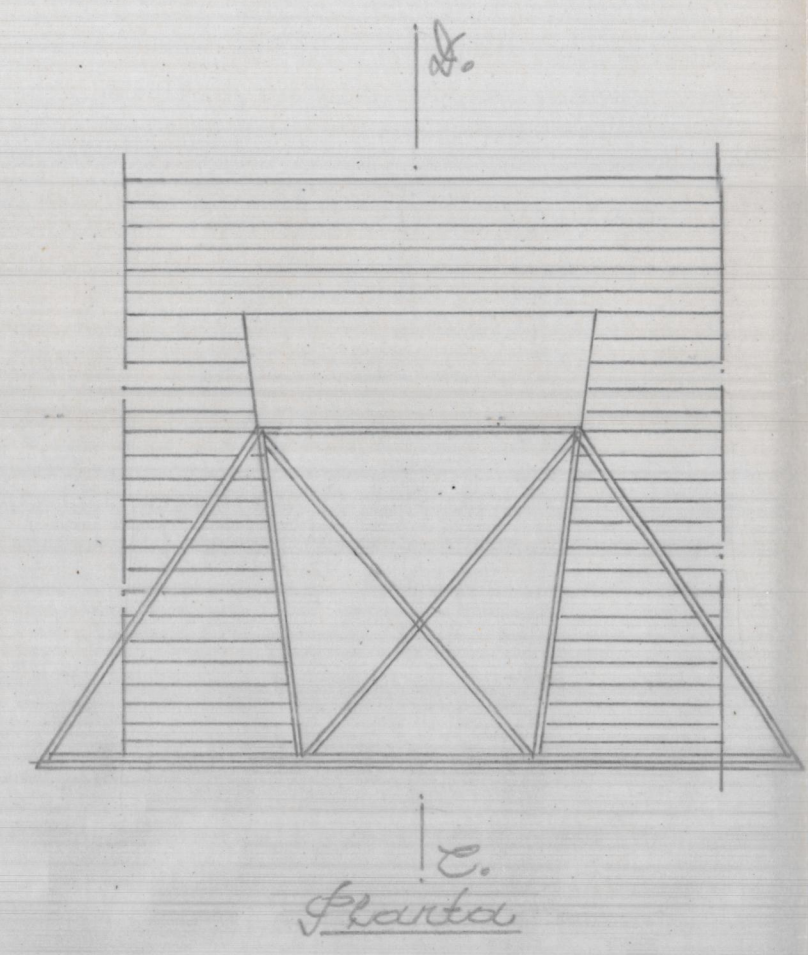
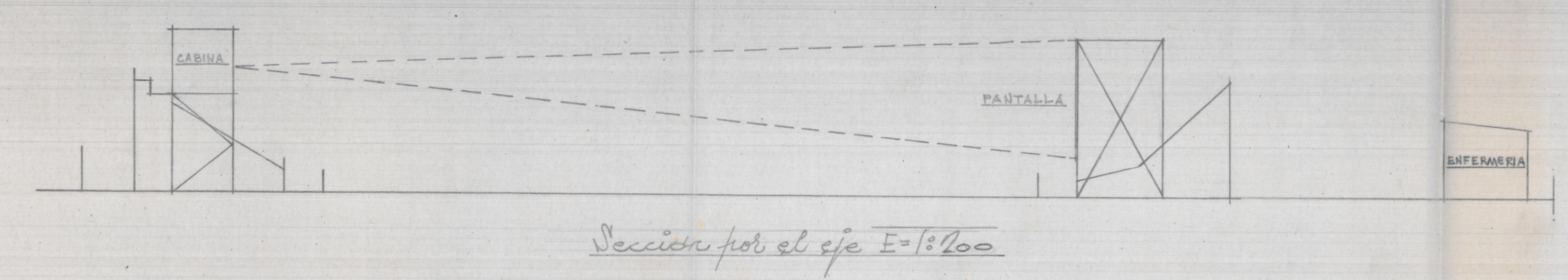
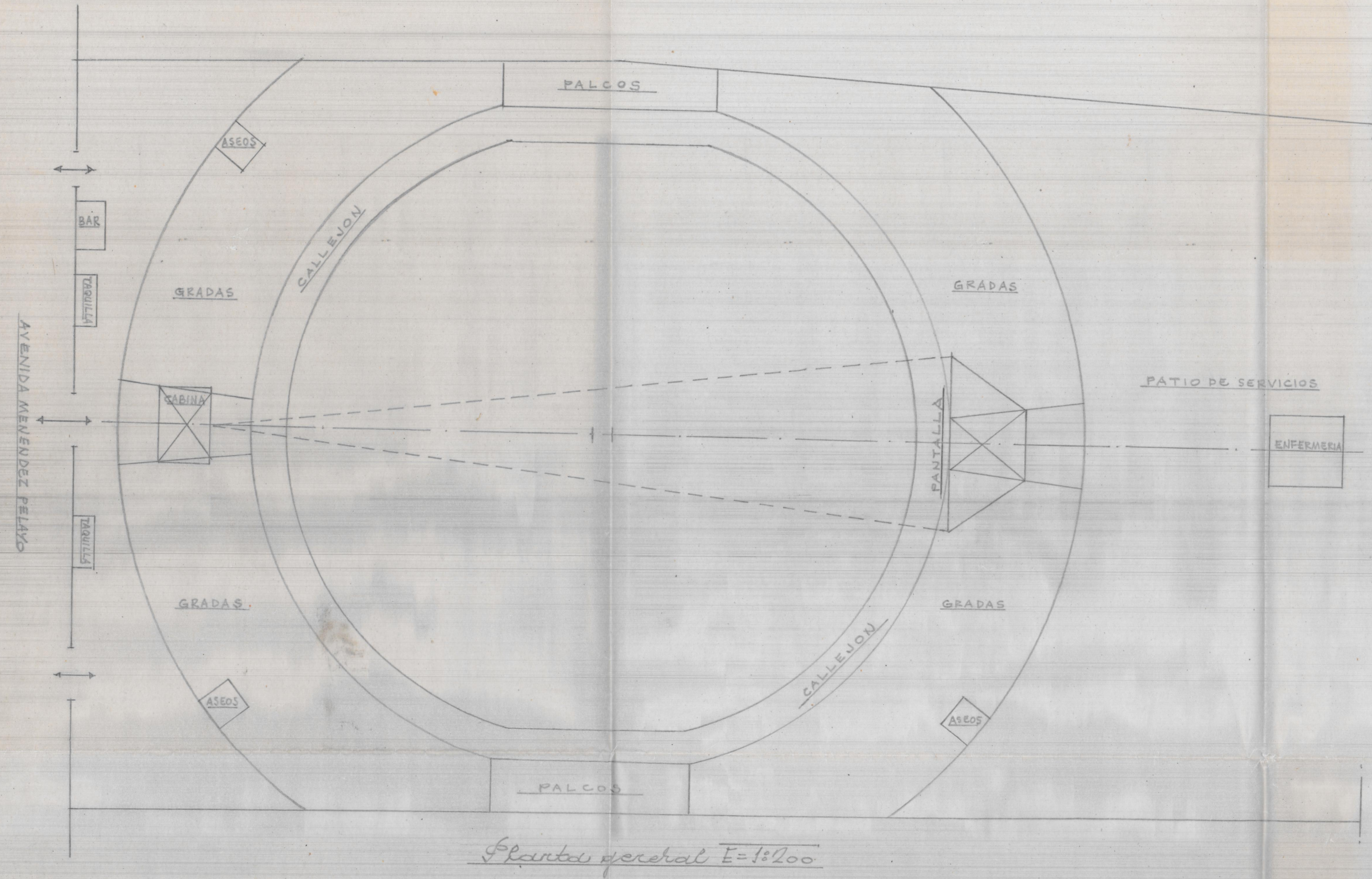
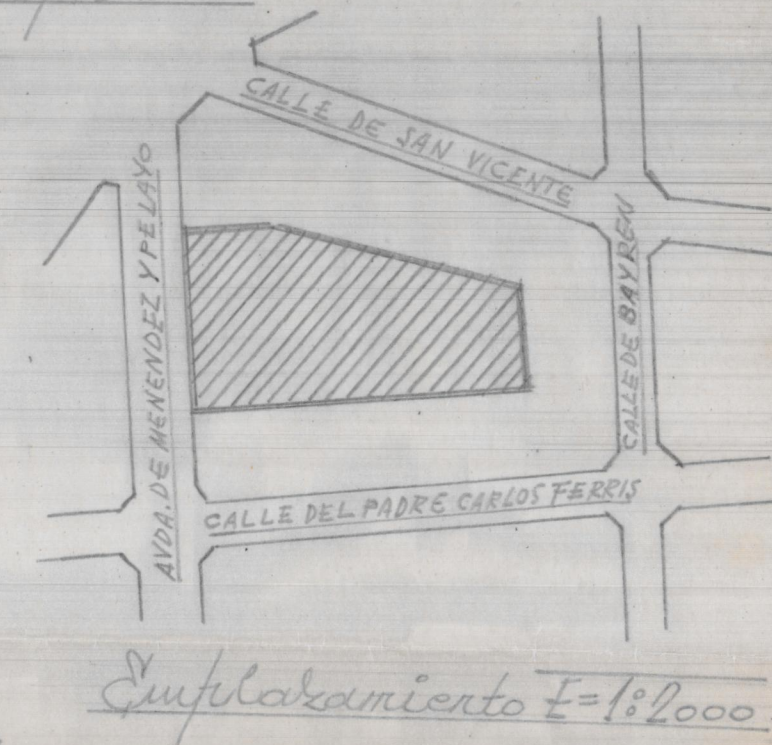
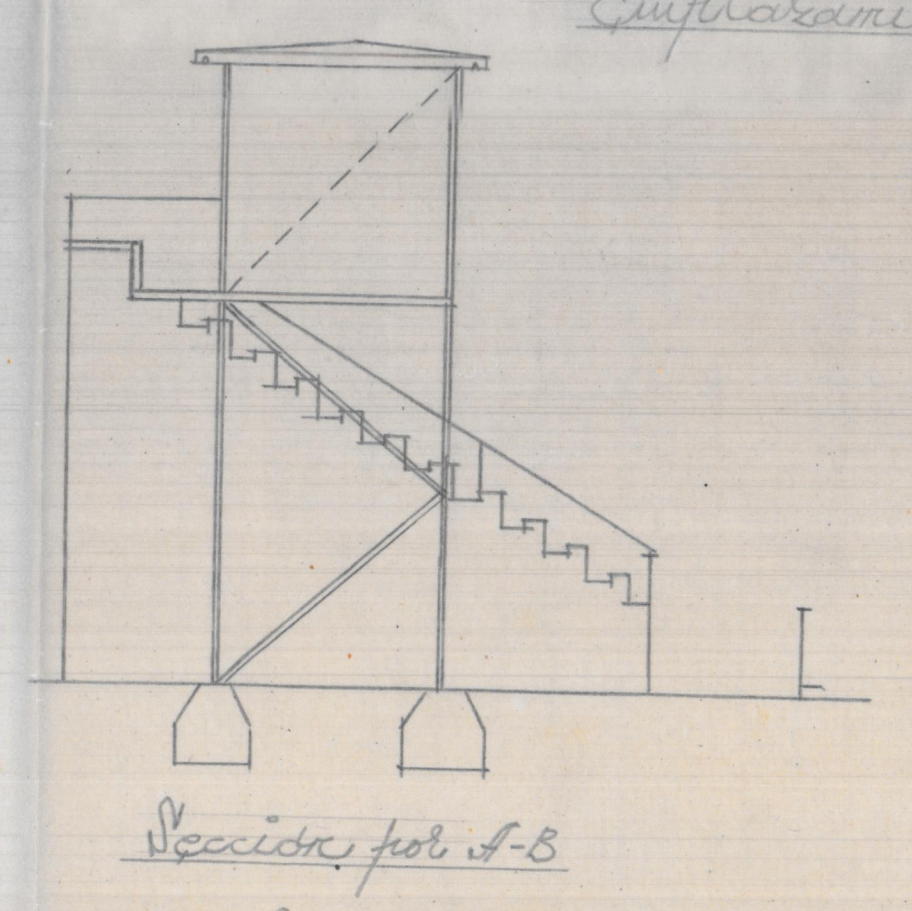
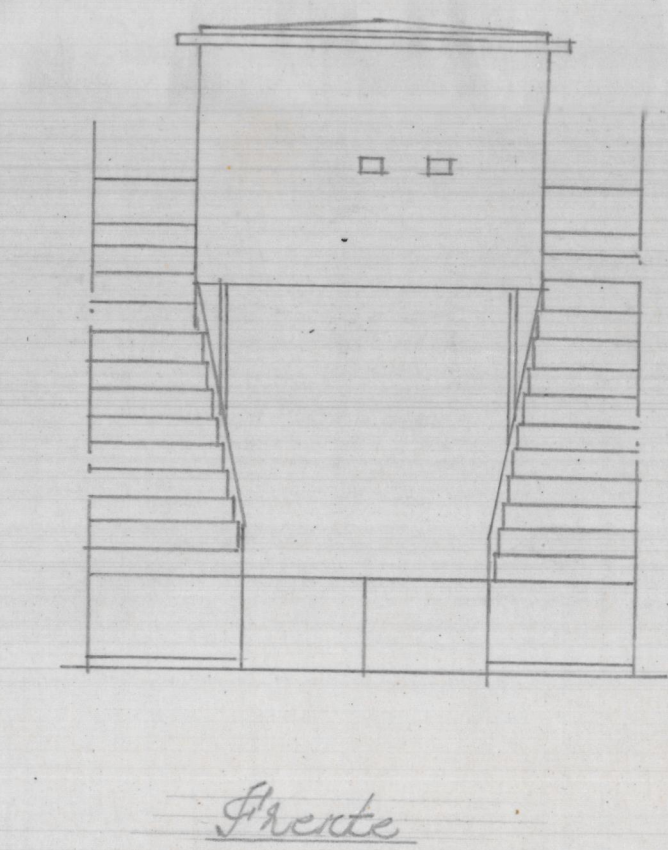
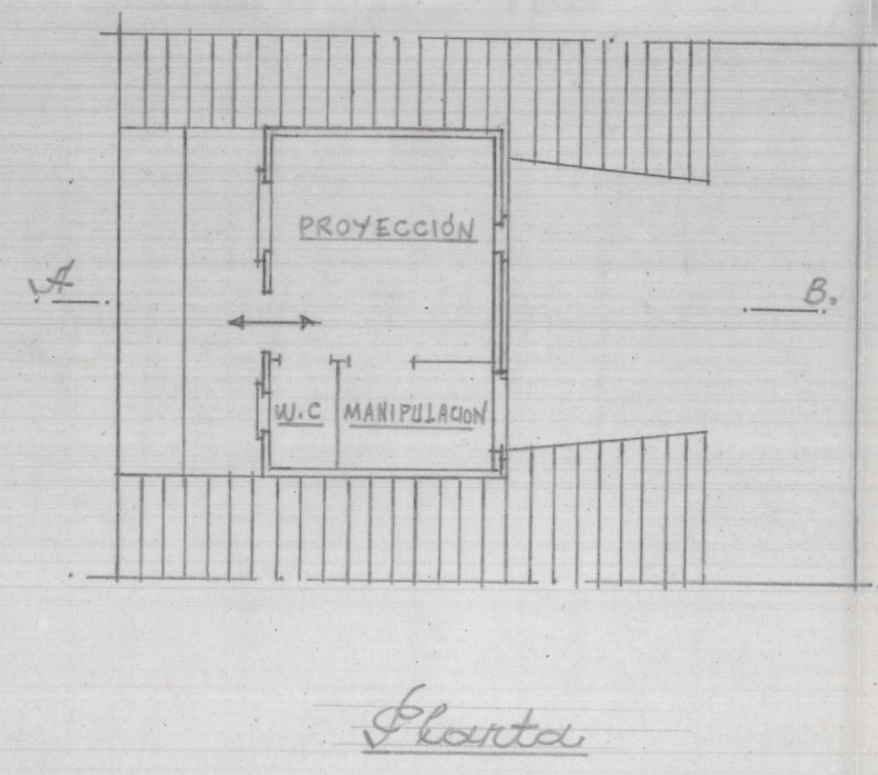


INSTALACIÓN DE CABINA Y PANTALLA EN LA PLAZA DE TOROS DE GANDIA PARA UTILIZARLA COMO CINEMATOGRAFO AL AIRE LIBRE

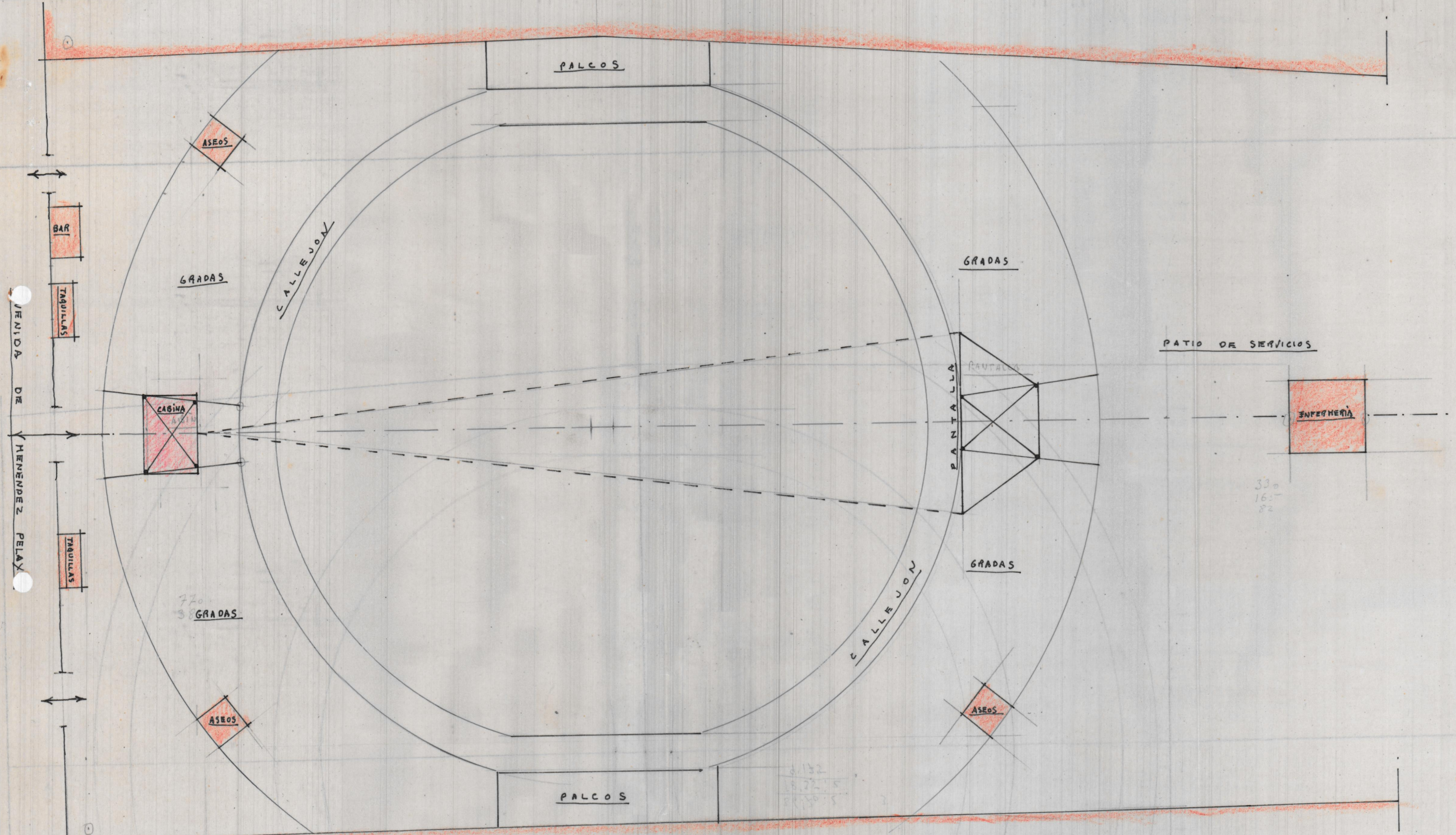
Valencia y febrero de 1959
EL ARQUITECTO



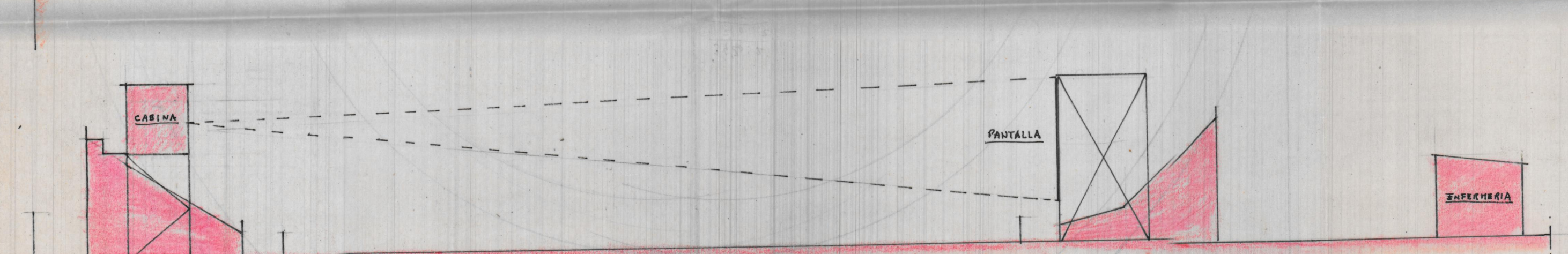
CABINA = E=1:100



Empalme E=1:2000



PANTA GENERAL - E - 1:200



SECCION POR EL EJE - E - 1:200