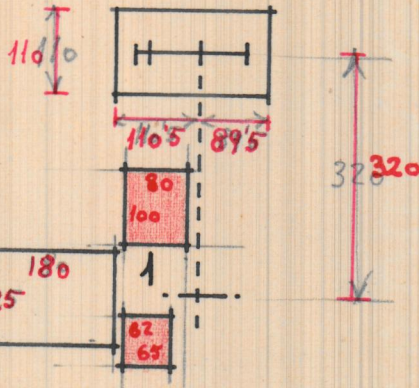
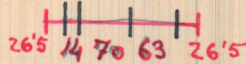
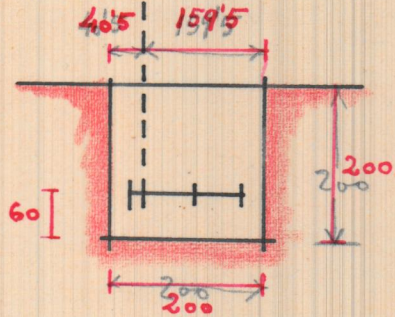


MAC-1.

1

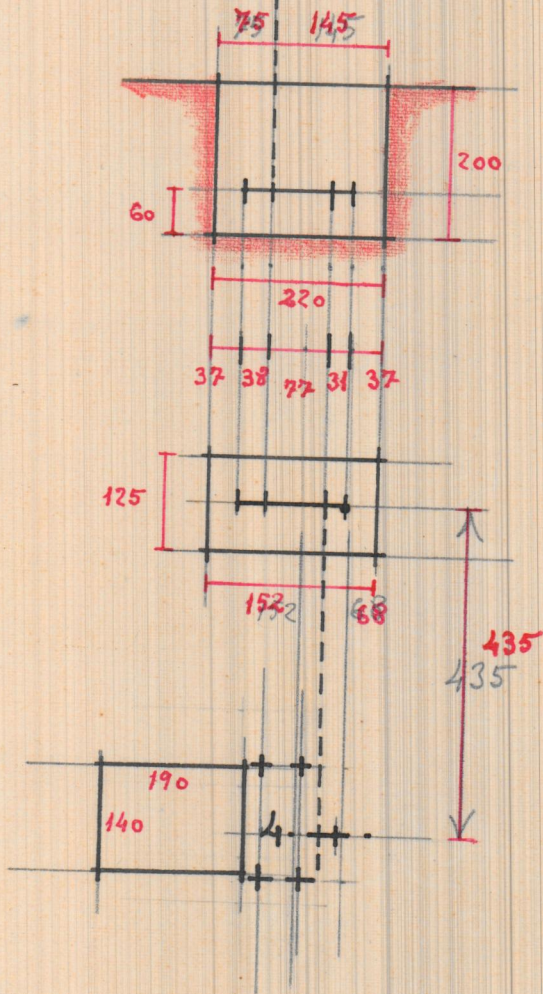


$$\begin{array}{r} 26'5 \quad 63 \\ 14 \quad 265 \\ \hline 70 \quad 89'5 \\ 110'5 \\ \hline 110'5 \\ 89'5 \\ \hline 200'6 \end{array}$$

$$\begin{array}{r} 26'5 \quad 70 \\ 14 \quad 63 \\ \hline 40'5 \quad 159'5 \\ 40'5 \\ 159'5 \\ \hline 200'0 \end{array}$$

MOTOR

MAC-4.





MAC-2.

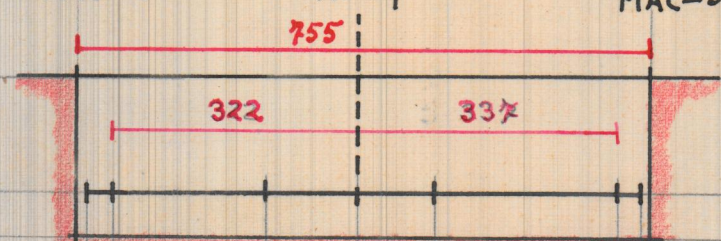
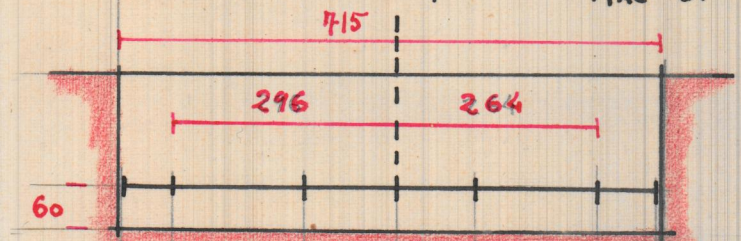
Motor

MAC-3.

MAC-6.

Motor

MAC-5.



176  
120  
102  
162  
-----  
560  
64  
78  
-----  
702  
65  
65  
-----  
715

210  
112  
127  
210  
-----  
659  
35  
35  
-----  
729  
13  
13  
-----  
755

