

$$\textcircled{1} = \frac{22'10 \times 10'90}{2} = 120'44 \text{ m}^2$$

$$\textcircled{2} = \frac{22'10 \times 8'80}{2} = 97'24 \text{ "}$$

$$\text{Total} = 217'68 \text{ m}^2$$

$$\textcircled{\text{I}} = \frac{6'80 \times 3'30}{2} = 11'23 \text{ m}^2$$

$$\textcircled{\text{II}} = \frac{4'90 \times 1'90}{2} = 4'65 \text{ "}$$

$$\textcircled{\text{III}} = \frac{11'40 \times 1'70}{2} = 6'27 \text{ "}$$

$$\textcircled{\text{IV}} = \frac{11'40 \times 4'80}{2} = 27'36 \text{ "}$$

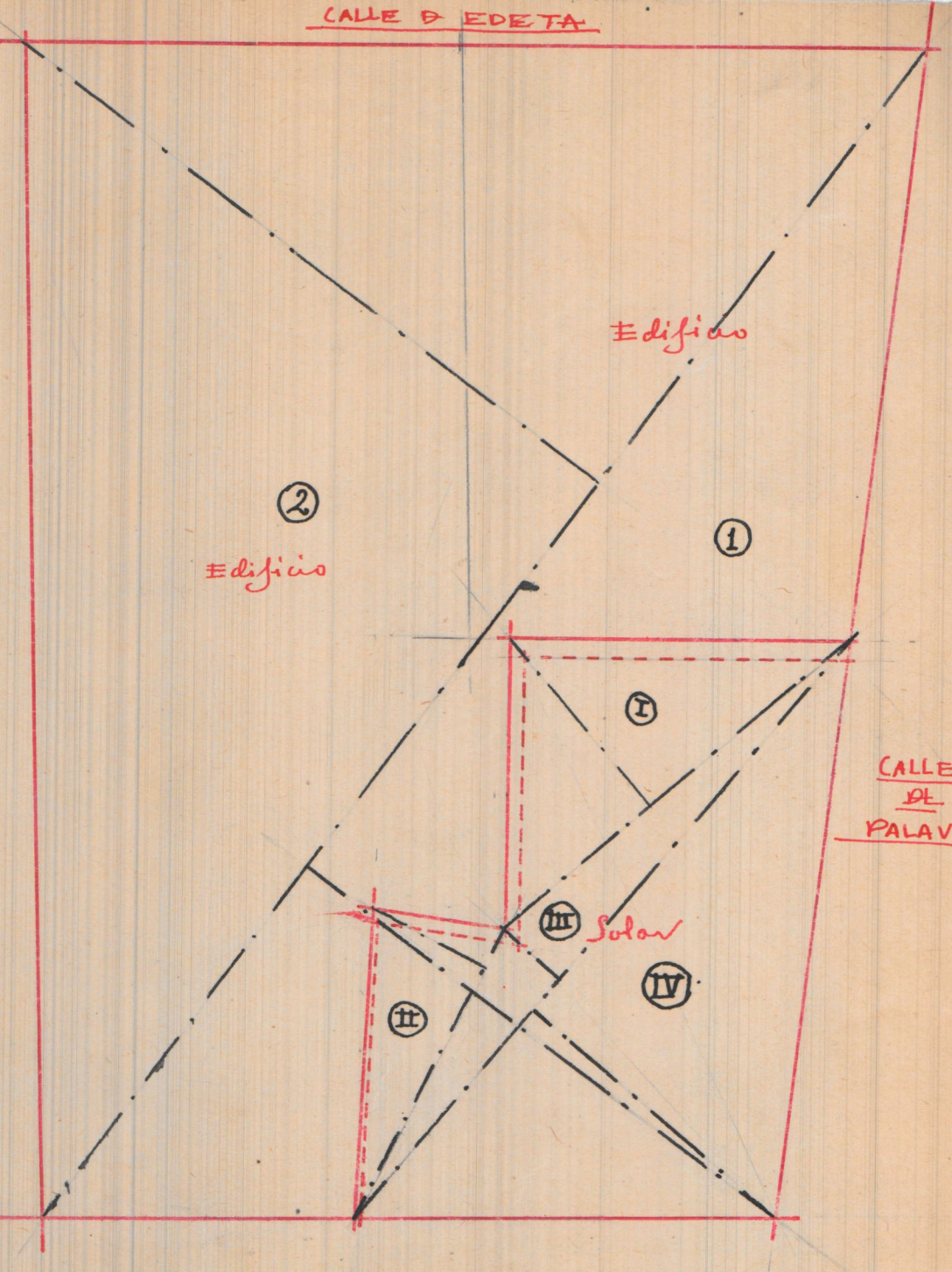
$$\text{Solar} = 49'50 \text{ m}^2$$

$$\textcircled{1} + \textcircled{2} = 217'68 \text{ m}^2$$

$$\textcircled{\text{I}} + \textcircled{\text{II}} + \textcircled{\text{III}} + \textcircled{\text{IV}} = 49'50 \text{ "}$$

$$\text{edificios} = 168'18 \text{ m}^2$$

Edificios y solar propiedad de
los ss. herederos de D. Josa de
Diego y Larri.

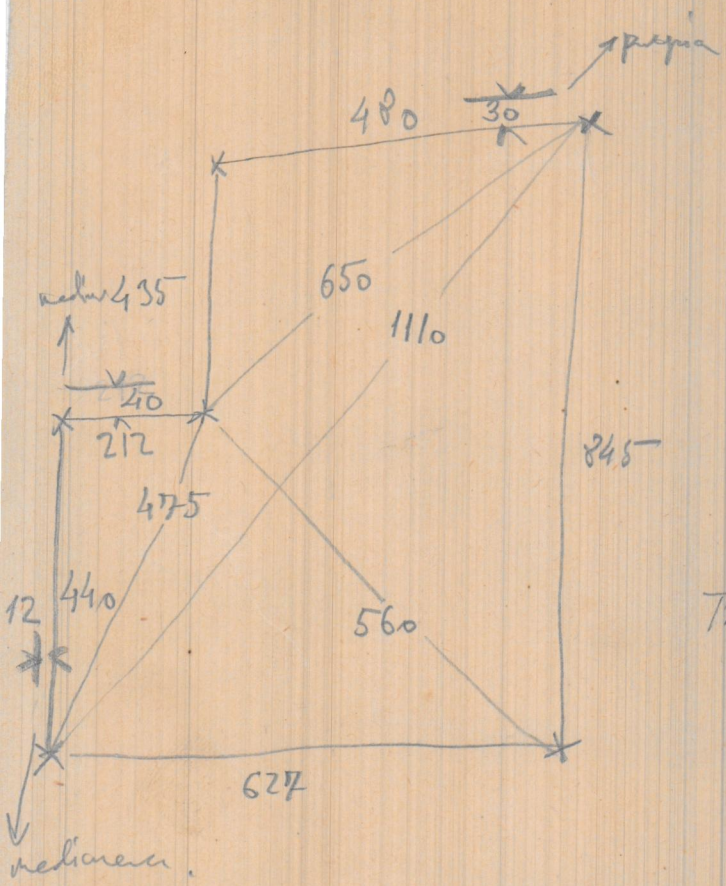


PLAZA EL CARDENAL BENLLOCH

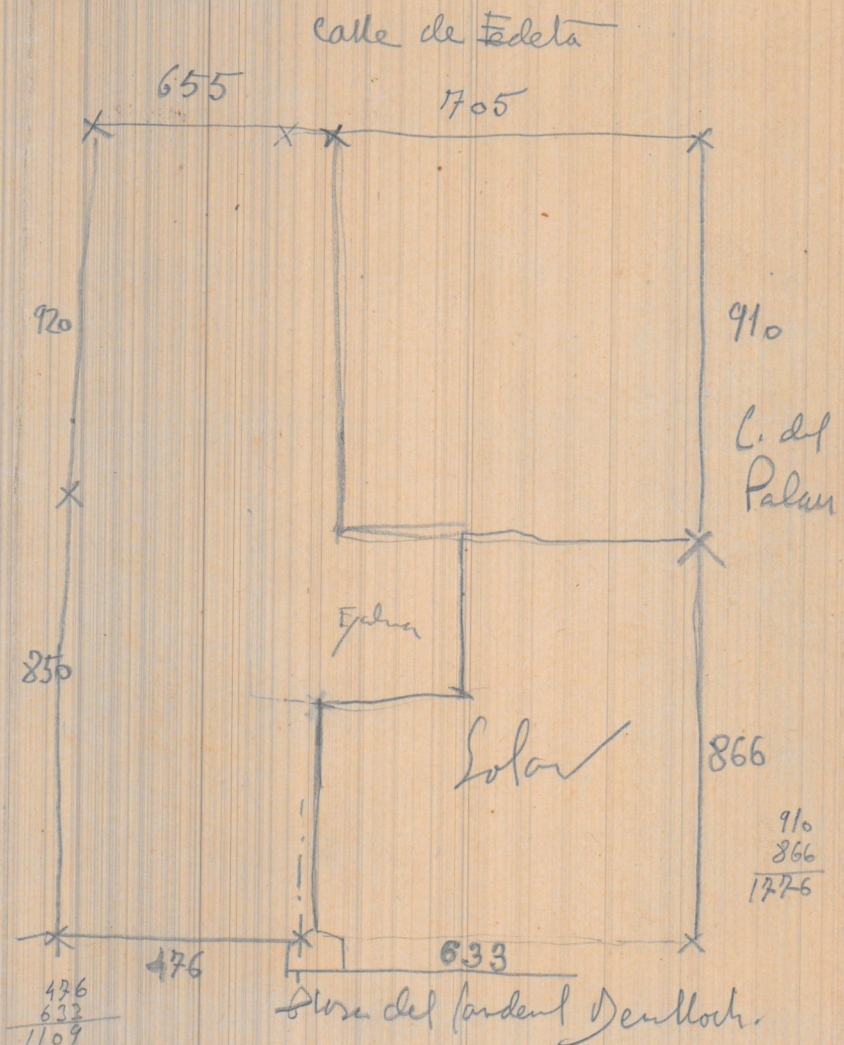
E. 1:100

Septiembre/1930

655
 705
 1360



920
 850
 1770



910
 866
 1776

Alse del fondeal Denuoch.