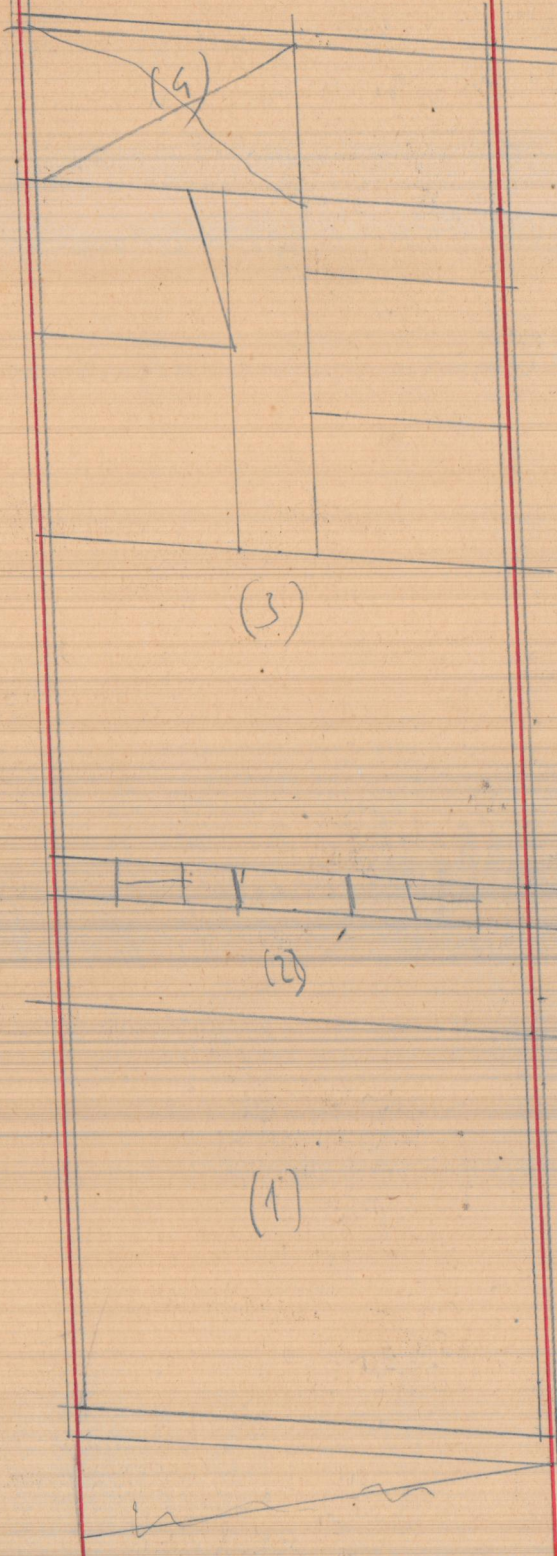


Lote 2



Superficies

(1) Jardin	34,71 m <sup>2</sup>
(2) Terraza	8,53 m <sup>2</sup>
(3) Edificio	62,75 m <sup>2</sup>
(4) Patio posterior	7,92 m <sup>2</sup>
	<hr/>
	113,91 m <sup>2</sup>

$(1) = 6,09 \times 5,70 = 34,71$   
 $(2) = 6,09 \times 1,40 = 8,53$   
 $(3) = 6,09 \times 9,40 = 57,25$   
 $2,20 \times 2,50 = 5,50$   
 $(4) = 3,60 \times 2,20 = 7,92$

Lote 113,91 m<sup>2</sup> a 4,55 €/m<sup>2</sup> = 518,30 €  
 Cédulas 125,50 m<sup>2</sup> a 50 €/m<sup>2</sup> = 6.275,00 €  


---

 10.831,40 €

Lote 113,91 m<sup>2</sup> a 30 €/m<sup>2</sup> = 3.417,30 €  
 Cédulas 125,50 m<sup>2</sup> a 60 €/m<sup>2</sup> = 7.530,00 €  


---

 10.947,30 €

Lote 113,91 m<sup>2</sup> a 30 €/m<sup>2</sup> = 3.417,30 €  
 Cédulas 125,50 m<sup>2</sup> a 48 €/m<sup>2</sup> = 6.042,50 €  


---

 9.064,80 €

Calle de los Leones

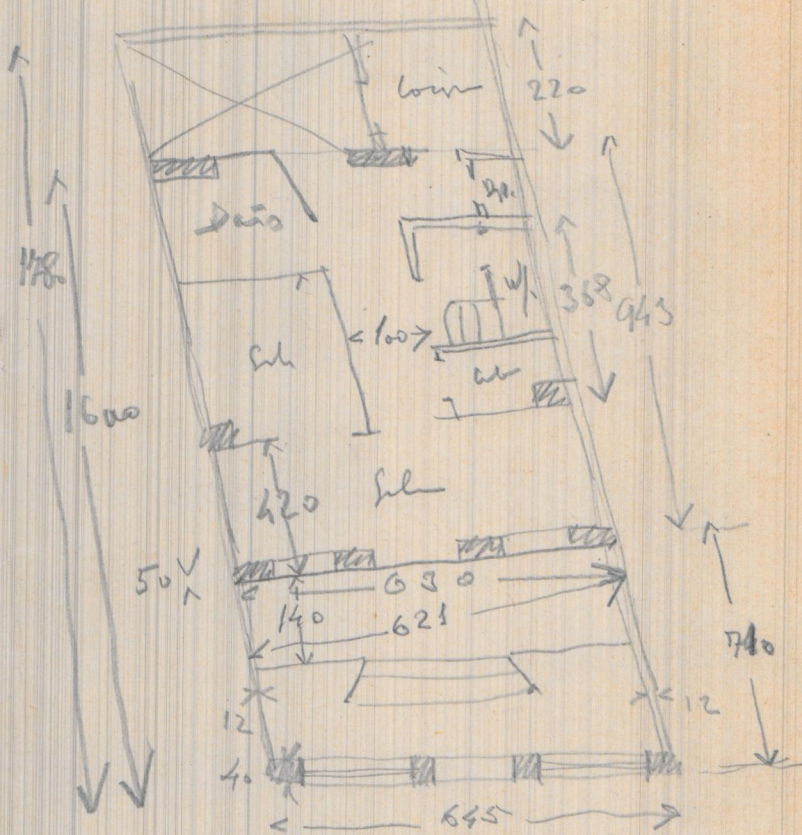
~~La~~

Valencia 27/8/930

27/8/950

Los pijos y leonado  
Calle los Yunes

$$\begin{array}{r} 007 \quad 0096 \\ \hline 2: 0068 \\ \hline 291 \\ \hline 980 \\ \hline 058 \\ \hline 049 \\ \hline 8 \\ \hline 0,81 \\ \hline 7 \\ \hline 5,9 \end{array}$$



4