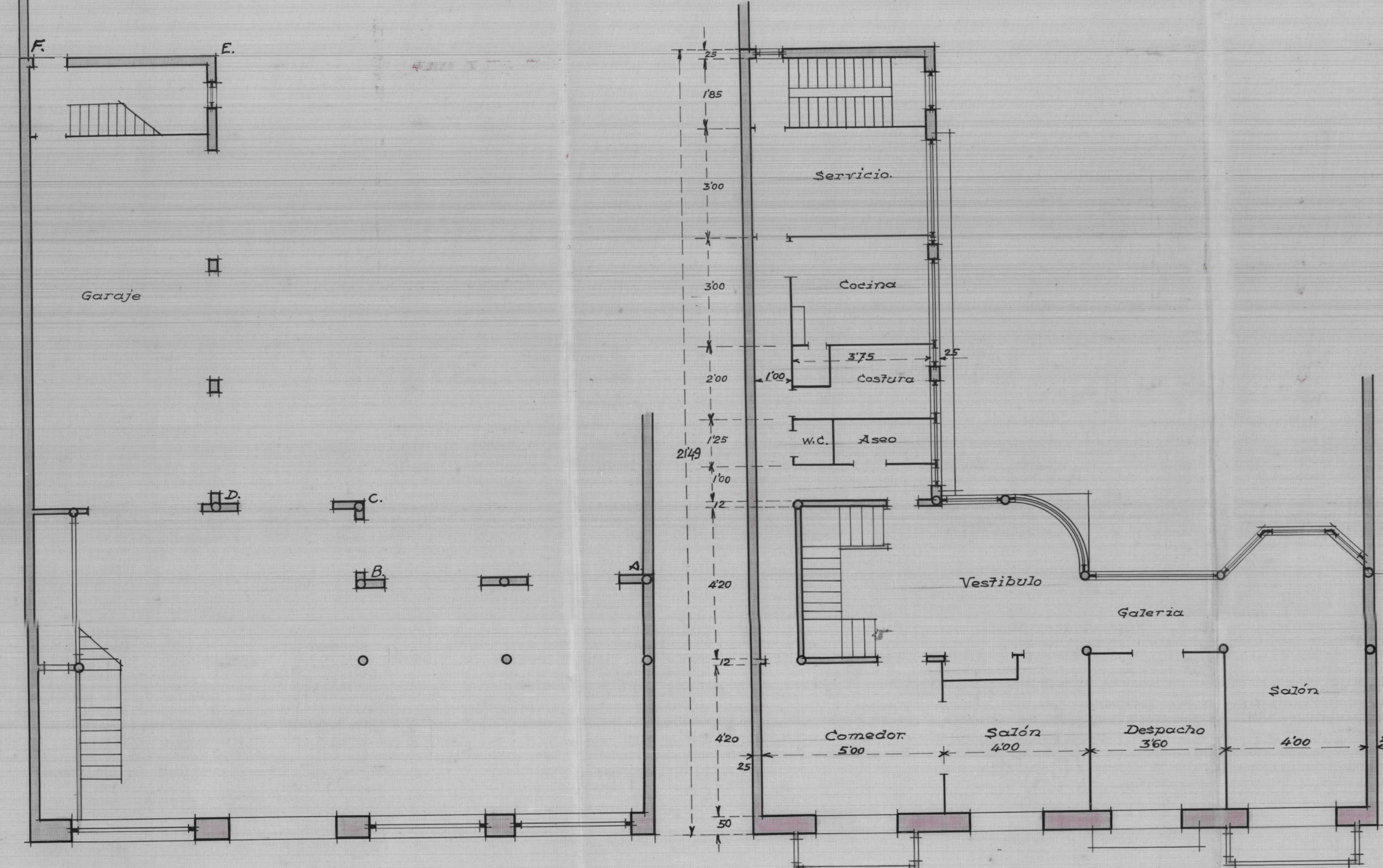
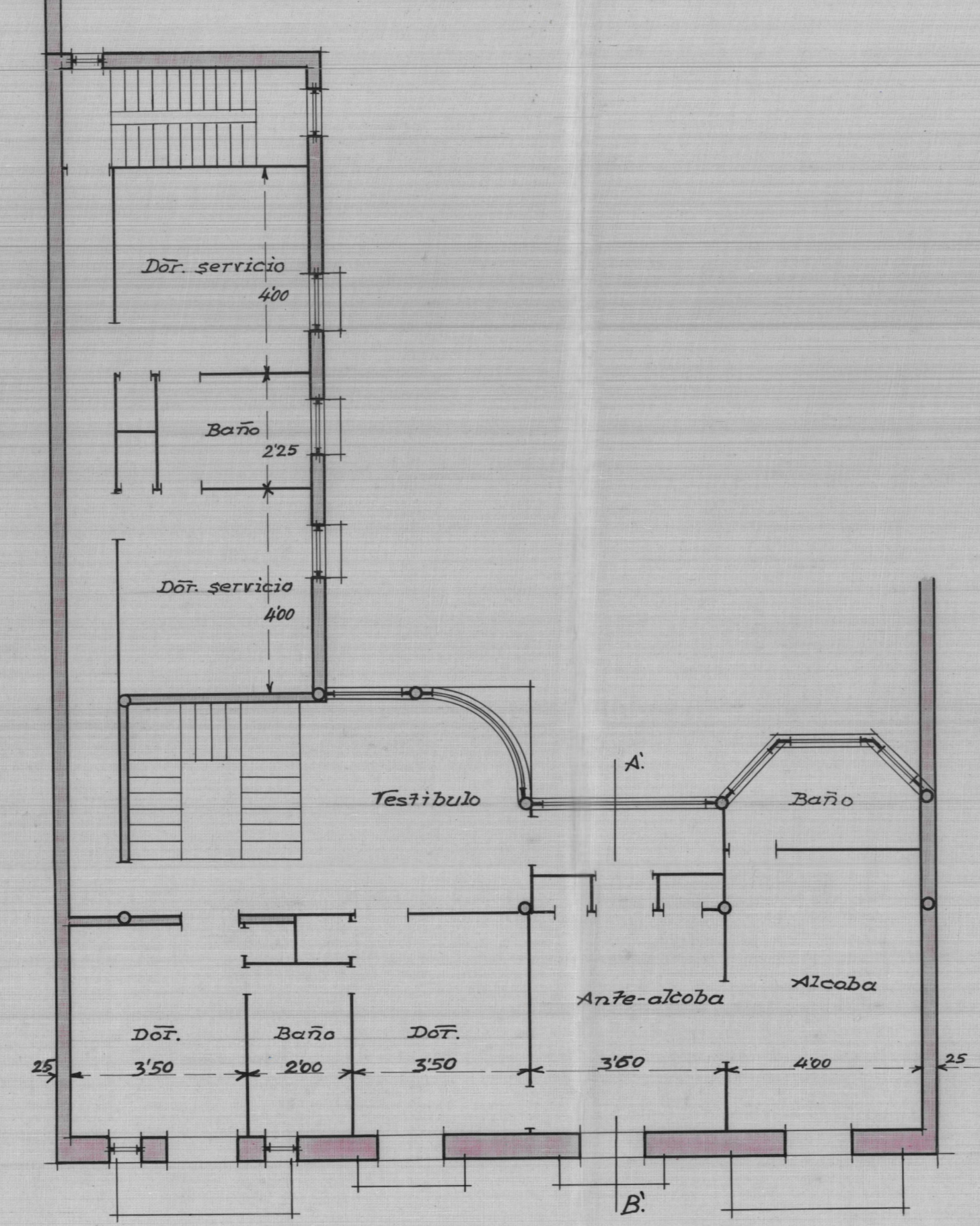


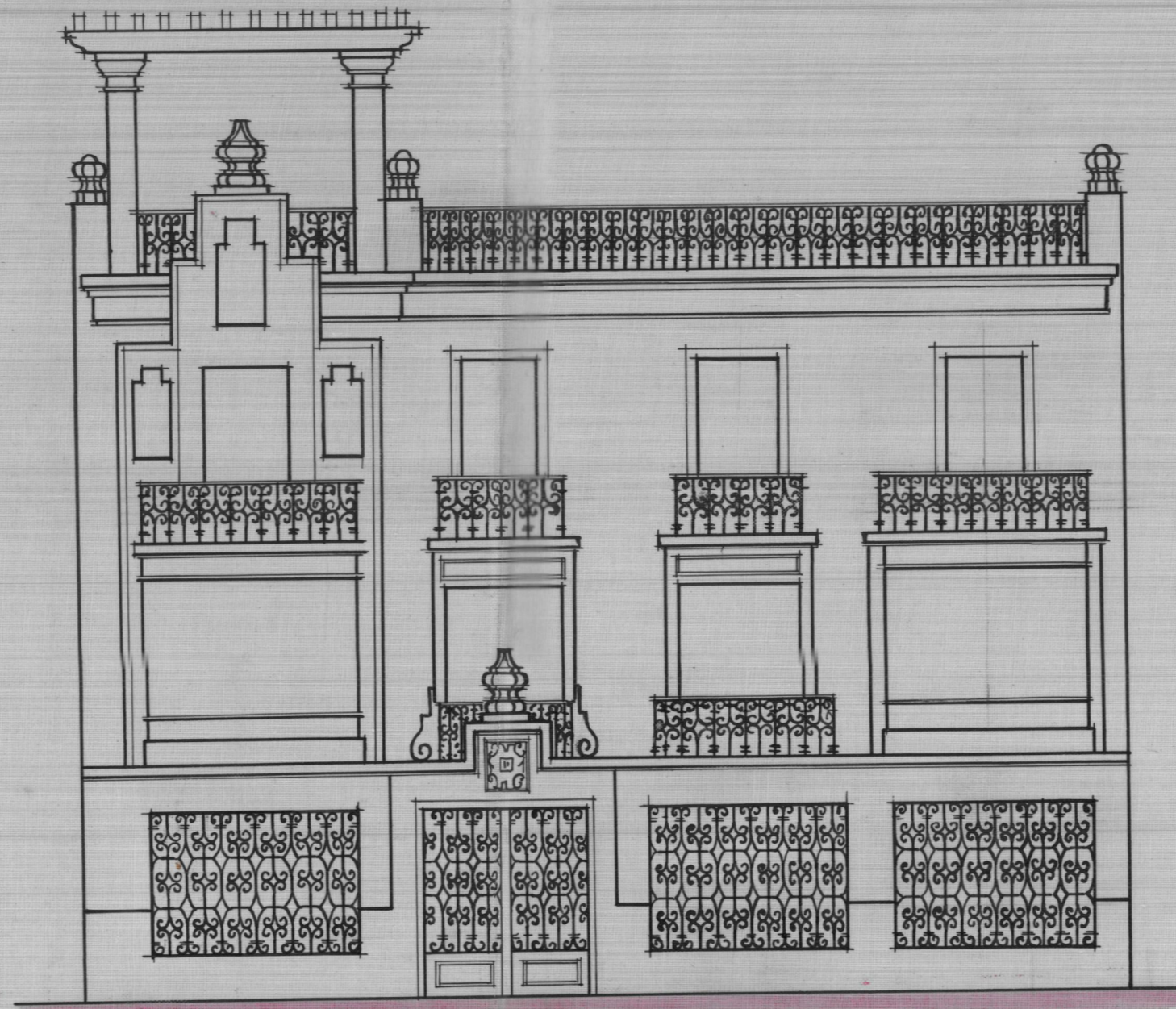
Proyecto de edificio vivienda en la
Avenida de Mariano Aser



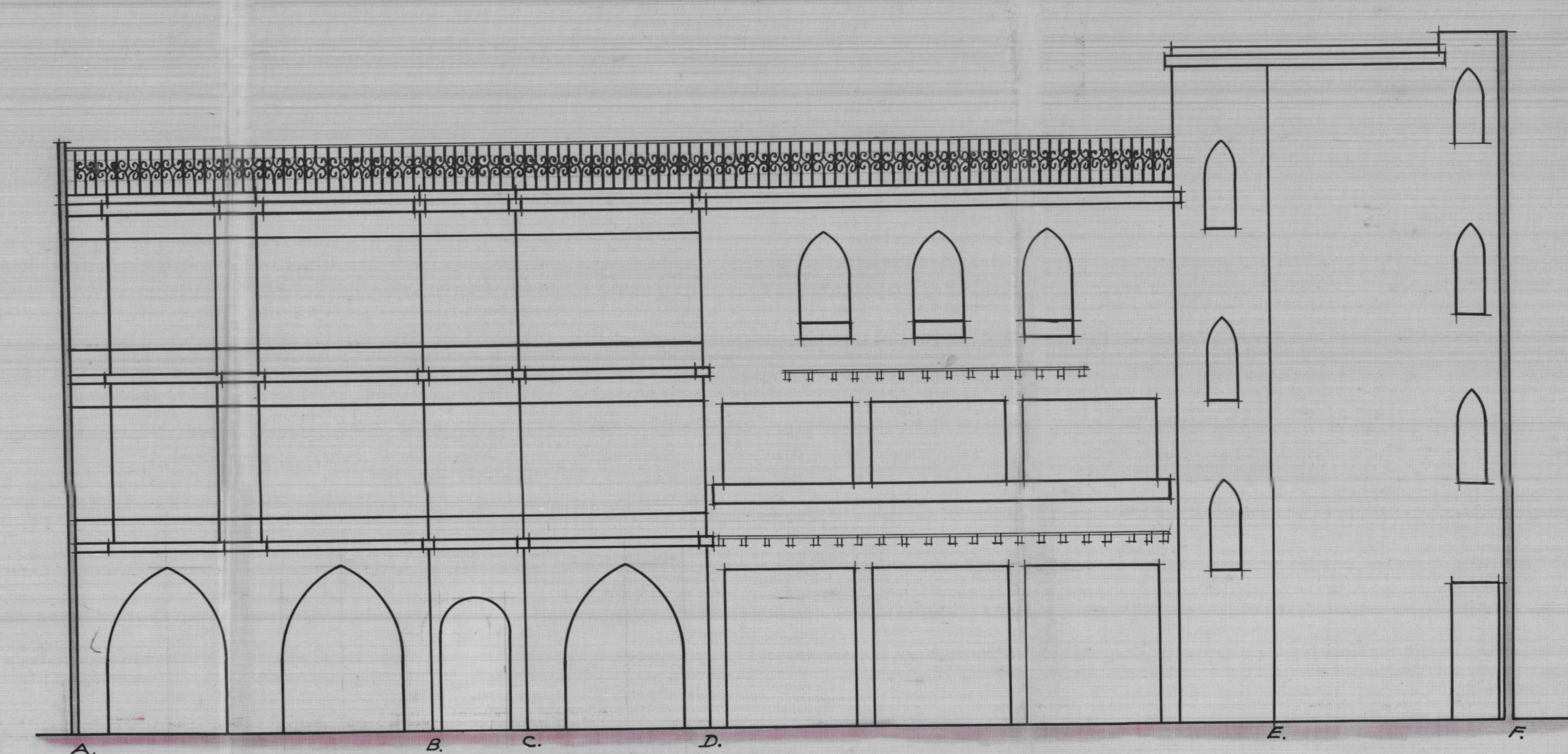
Planta piso principal



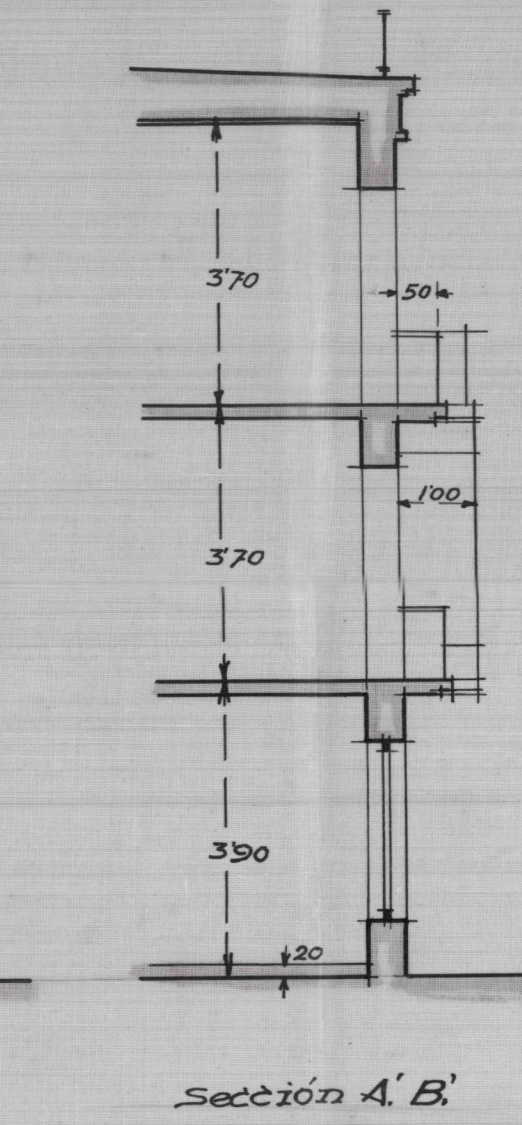
Planta piso alto.



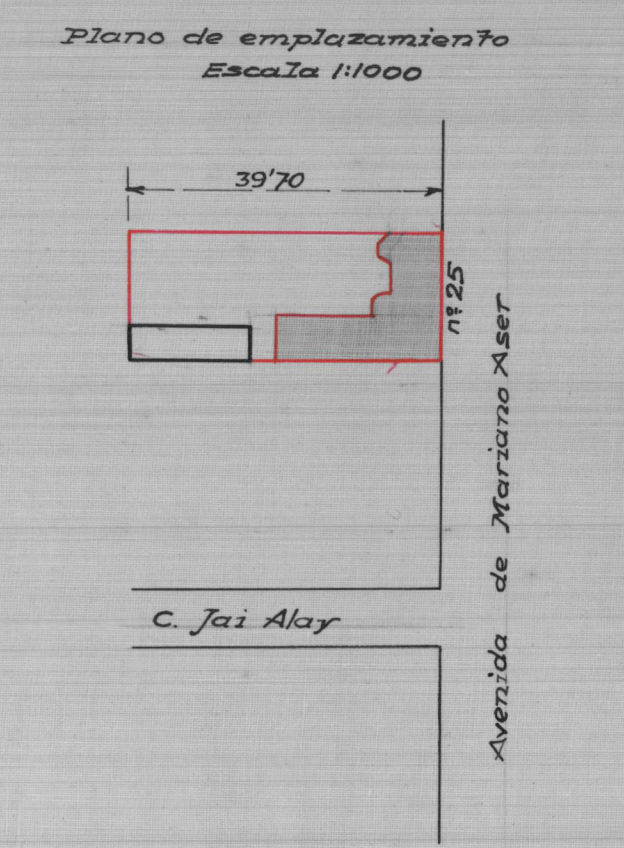
Fachada



Fachadas posteriores



Sección A'B'



Plano de emplazamiento
Escala 1:1000

39'70

11'25

Avenida de Mariano Aser

C. Jai Alay

Escala 1:100
Valencia Mayo 1932
El Arquitecto
J. J. J. J.