

Document downloaded from:

<http://hdl.handle.net/10251/93328>

This paper must be cited as:

Georgoulas, G.; Climente Alarcon, V.; J. Antonino-Daviu; Tsoumas, IP.; Stylios, CD.; Arkkio, A.; Nikolakopoulos, G. (2016). The use of a Multi-label Classification Framework for the Detection of Broken Bars and Mixed Eccentricity Faults based on the Start-up Transient. IEEE Transactions on Industrial Informatics. 13(2):625-634. doi:10.1109/TII.2016.2637169



The final publication is available at

<http://doi.org/10.1109/TII.2016.2637169>

Copyright Institute of Electrical and Electronics Engineers

Additional Information

# The use of a Multi-label Classification Framework for the Detection of Broken Bars and Mixed Eccentricity Faults based on the Start-up Transient

George Georgoulas, Vicente Climente-Alarcon, *Member, IEEE*, Jose A. Antonino-Daviu, *Senior Member, IEEE*, Ioannis Tsoumas, *Member, IEEE*, Chrysostomos D. Stylios, *Senior Member, IEEE*, Antero Arkkio, and George Nikolakopoulos *Member, IEEE*

**Abstract**—In this article a data driven approach for the classification of simultaneously occurring faults in an induction motor is presented. The problem is treated as a multi-label classification problem with each label corresponding to one specific fault. The faulty conditions examined, include the existence of a broken bar fault and the presence of mixed eccentricity with various degrees of static and dynamic eccentricity, while three “problem transformation” methods are tested and compared. For the feature extraction stage, the start-up current is exploited using two well-known time-frequency (scale) transformations. This is the first time that a multi-label framework is used for the diagnosis of co-occurring fault conditions using information coming from the start-up current of induction motors. The efficiency of the proposed approach is validated using simulation data with promising results irrespective of the selected time-frequency transformation.

**Index Terms**—Fault Diagnosis, Induction Motors, Multi-label Classification

Copyright (c) 2009 IEEE. Personal use of this material is permitted. However, permission to use this material for any other purposes must be obtained from the IEEE by sending a request to [pubs-permissions@ieee.org](mailto:pubs-permissions@ieee.org).

Manuscript received July 01, 2016; revised October 16, 2016. This work was partially supported by the Spanish MINECO and FEDER program in the framework of the ‘Proyectos I+D del Subprograma de Generación de Conocimiento, Programa Estatal de Fomento de la Investigación Científica y Técnica de Excelencia’ (ref: DPI2014-52842-P). This work was also partially supported by the Horizon 2020 Framework program DISIRE under the Grant Agreement 636834.

G. Georgoulas and G. Nikolakopoulos are with the Control Engineering Group Department of Computer Science, Electrical and Space Engineering Luleå University of Technology, SE-97187 Luleå, Sweden, (phone: +46 (0)920 491298; e-mail: {geogeo, geonik}@ltu.se).

V. Climente-Alarcon and A. Arkkio are with the Department of Electrical Engineering and Automation, Aalto University, P. O. Box 13000, FI-00076 Aalto, Finland (e-mail: [viclial@ieee.org](mailto:viclial@ieee.org), [antero.arkkio@aalto.fi](mailto:antero.arkkio@aalto.fi)).

J. A. Antonino-Daviu is with the Instituto Tecnológico de la Energía, Universitat Politècnica de València, Camino de Vera s/n, 46022 Valencia, Spain (e-mail: [joanda@die.upv.es](mailto:joanda@die.upv.es)).

I. Tsoumas is with the ABB Corporate Research, Baden-Dättwil 5405, Switzerland (e-mail: [ytsoumas@ieee.org](mailto:ytsoumas@ieee.org)).

C.D. Stylios is with the Laboratory of Knowledge and Intelligent Computing, Department of Computer Engineering, TEI of Epirus, 47100 Arta, Kostakioi, Greece (e-mail: [stylios@teiep.gr](mailto:stylios@teiep.gr)).

## I. INTRODUCTION

Recently, the field of electrical machines has received increasing attention, towards the development and application of fault detection techniques [1], [2]. The driving forces behind this have been: a) the reduction of maintenance cost and the prevention of significant costly unscheduled downtimes, b) the development of novel fault detection techniques that can revolutionize the existing commonly used approaches in the field, and c) the reduction of the cost for applying embedded fault detection solutions in lab experimental cases or bigger industrial setups.

Among the most common faults encountered in the area of induction motors are: the opening or shorting of one or more of the stator's phase windings [3], the presence of broken rotor bar(s) or cracked rotor's end-rings [4], air-gap irregularities [5], bearing faults, and eccentricity faults [6].

For the detection of these faults and more specifically, for the case of broken bars and eccentricity, various input signals have been used quite successfully, such as induced voltages [7], vibration signals [8], currents and vibration signals [9], instantaneous angular speed or power [10]. However, methods that rely only on the use of currents, like the Motor Current Signature Analysis (MCSA) [11], [12] are usually preferred mainly due to their non-invasive nature. The underlying philosophy of those methods is to detect the presence of specific components created by the fault.

For the case of broken bars the frequencies of the fault components are given by (1):

$$f_b = (1 \pm 2 \cdot k \cdot s) f_s, \quad k = 1, 2, \dots \quad (1)$$

where  $f_s$  is the fundamental frequency and  $s$  is the slip.

Among the various components, the Lower (or Left) Sideband Harmonic (LSH), for  $k = 1$  and taking the minus sign in (1) [13], is the most extensively used one in the fault detection literature.

In the case of eccentricity, and more specifically, in the case of mixed eccentricity, which is the most commonly encountered type, another group of components, with

frequencies given by (2) is expected [11]:

$$f_{ecc} = \left( 1 \pm m \left( \frac{1-s}{p} \right) \right) f_s, \quad m = 1, 2, \dots \quad (2)$$

where  $p$  is the number of pole pairs.

As it can be seen, both frequency groups depend on the slip value. This observation triggered the development of methods that rely on the analysis of these components during start-up, a transient at which the slip varies from one to a value usually close to zero within a short period of time. This rapid evolution makes the faulty components “draw” quite distinctive patterns in the time-frequency plane. In the case of broken bars the LSH will show up as a V pattern on the time frequency plane, while in the case of mixed eccentricity and  $m = p/2$ , one of the relevant frequency components will start at being equal to the supply frequency and will end up having a frequency just above half the supply frequency (assuming a value of slip close to 0). These characteristic patterns are depicted in Fig. 1.

Various methods under the term Transient MCSA have been proposed for the detection and quantification of the aforementioned components [14]-[17]. Among the different proposed approaches for the diagnosis of these faults or combination of them, the investigation of single faults diagnosis methods has dominated the literature. However, the simultaneous presence of electromechanical faults is the rule and not the exception in industrial settings. Even though the faults rarely occur/start simultaneously, during the course of operation of an induction motor, one type of faults can trigger the occurrence of another type or a second fault may occur, while the machine operates under the presence of another fault.

Therefore, lately, scenarios where more than one fault can be present at the same time were investigated [18]-[20]. In [18], a filter bank combined with high-resolution spectral analysis was used for the estimation of faulty components caused by multiple faults (broken bars, eccentricity, bearing faults). In [19] a cascade of neural networks was trained to recognize different fault scenarios, including simultaneous faults. In [20] different faults were investigated through the characteristic “fingerprint” that is left on the decomposed start-up current via Discrete Wavelet Transform (DWT). However this approach has not been automated yet.

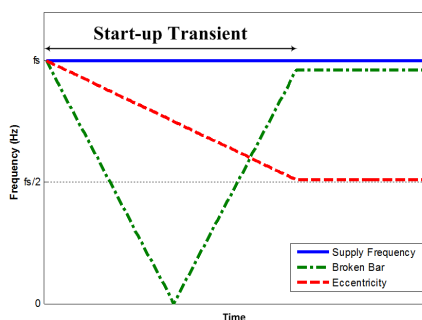


Fig. 1. Approximate evolution of the instantaneous frequency of faulty components during start-up.

In this work the presence of a broken bar as well as mixed-eccentricity faults are examined within the framework of multi-label classification [21]-[24]. Multi-label classification is a framework that allows instances to belong to more than one category/class at the same time, a situation that arises in many real life applications, including the case of equipment suffering more than one fault. This is, to the best of our knowledge, the first time that such a framework is explicitly employed for the diagnosis of co-occurring faults in induction motors during the start-up operation. Therefore the main contribution of the proposed work is the introduction of the multi-label framework as a means to cope with the occurrence of more than one fault.

As in almost all classification problems, the multi-label framework uses extracted features instead of the original raw measurements. For the specific application, the time frequency representation of the start-up current is used as a means for feature extraction. The advantage of examining the start-up current is that especially the pattern of the frequency components related to the rotor fault is very different from those due to other failures or phenomena. Hence, its detection constitutes a very reliable indicator of the presence of the fault. A fault detection algorithm relying on the start-up current cannot be misled by the presence of other failures or phenomena irrelevant to the fault, like in [25].

Furthermore, the approach proposed in this work has on the one hand the advantage that allows the aforementioned faulty components to “draw” a distinctive pattern on the time frequency plane, while on the other hand poses the challenge of adequately handling the high dimensionality of the representation in the time frequency plane. In order to show the robustness and the general applicability of the method, two well-known time-frequency (scale) transforms, the Short Time Fourier Transform (STFT) and the Continuous Wavelet Transform (CWT) are tested.

To cope with the high dimensionality of the output of both the STFT and the CWT, a number of steps are involved including the application of a two dimensional variant of the Piecewise Aggregate Approximation (PAA) and then the application of Principal Component Analysis (PCA) for further dimensionality reduction. The final diagnosis is accomplished within the multi-label classification framework using simple conventional classifiers. The whole procedure is tested using simulations coming from a suitable model of the induction machine, which can accommodate various types of faults.

The rest of the paper is structured as follows. Section II presents the proposed approach and the methods used in each one of the involved steps, while Section III summarizes the evaluation procedure, along with a description of the involved simulation model, followed by the achieved results. Finally, Section IV concludes the paper.

## II. PROPOSED APPROACH

The proposed approach, which relies on the multi-label framework requires the transformation of the original raw current measurement to a more suitable representation. The

extraction of this more suitable representation builds upon a method for broken bar fault diagnosis using the time frequency representation of the start-up [26]. In [26], the time frequency representation was produced using the STFT. However the multi-label classification offers a general framework, which is not so much affected by the selected time-frequency representation. To prove that, an alternative time-scale representation based on the CWT is also tested.

Therefore, the approach proposed in [26], is extended to meet the specific characteristics of the faults to be tackled with the multi-label case as it is explained in the following subsections. For completeness, each stage is presented in brief in the following subsections, while the multi-label stage, which is the core of the proposed approach, is presented in more detail since it is novel in the field of induction motor fault diagnosis.

### A. Transient Isolation

The proposed overall method tries to take advantage of the time evolution of the components generated by the fault. Therefore the isolation of the end of the transient is important. However, contrary to the case of broken bars, where at the end of the transient the faulty components get close and are usually masked by the fundamental/supply frequency, in the case of mixed eccentricity the faulty component at steady state (assuming a small value of the slip) lies quite apart from the fundamental/supply frequency. Therefore, in this work, unlike the case in [26], the window of the current retained for further processing was selected to be approximately 1.5 times the duration of the transient, while the end of the transient is detected using a moving window as in [26].

### B. Time-Frequency Representation

There are many tools that can be used for the analysis of the time-frequency evolution of signals. Among them STFT and CWT are probably the most popular in engineering applications.

#### 1) STFT

STFT is probably the simplest and most widely used method when it comes to transforming a signal to its time-frequency representation. Therefore, even though it has a number of limitations, inherited by the application of Fourier transform to a finite length signal  $x(\tau)$ , it has already proven its usability in the case of single, broken bar faults [26].

Formally, the STFT is given by (3), where  $w(t)$  represents the window function:

$$X(t, \omega) = \int_{-\infty}^{\infty} x(\tau)w(\tau-t)e^{-j\omega\tau}d\tau \quad (3)$$

In this work the time-frequency content below the fundamental frequency is considered. For that range, the components created by the broken bar and the eccentricity would have instantaneous frequencies that would approximately look like the ones in Fig. 1.

As it can be seen in Fig. 2, which depicts the spectrogram of different fault scenarios, generated by the simulation model

described in Section III (normalized and measured in dB), even though the ideal scenario is not met, both the V pattern and the component created by the eccentricity can be spotted. When however they co-occur (bottom of Fig. 2), these patterns are a bit distorted.

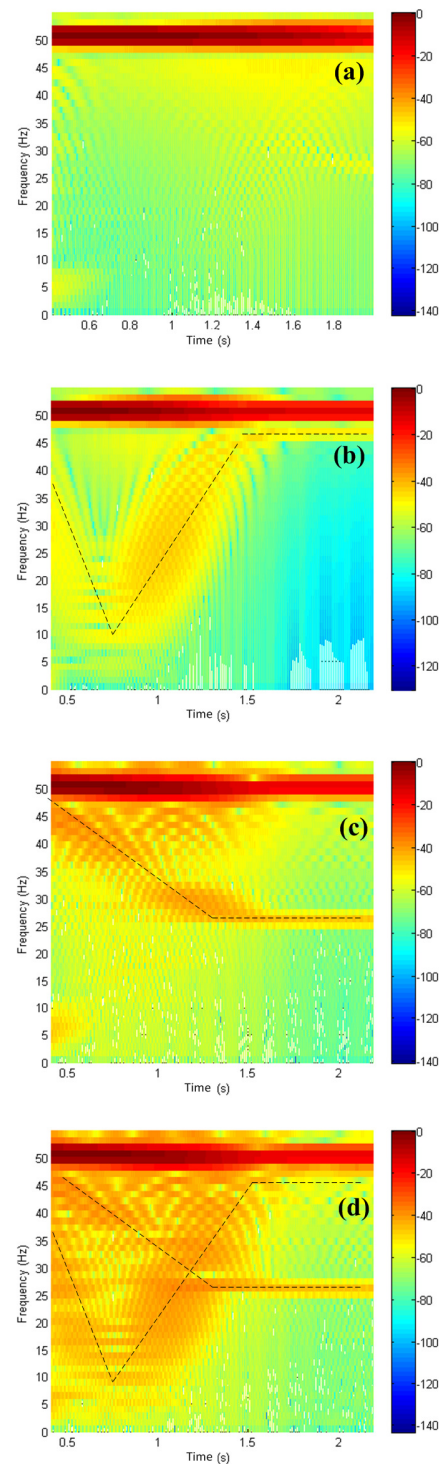


Fig. 2. Time-frequency plane for different conditions, simulated using the model of Section III. From top to bottom, healthy motor, motor with one broken bar, motor with mixed eccentricity (35% static and 35% dynamic), and finally motor with both mixed-eccentricity (35% static and 35% dynamic) and one broken bar.



## 2) CWT

A wavelet  $\psi(t)$  is, a localized waveform that satisfies certain conditions [27]. Due to its localized nature it is very popular for applications involving transient phenomena or phenomena having abrupt changes. The CWT of a signal is given by (4):

$$T(a,b) = \frac{1}{\sqrt{a}} \int_{-\infty}^{\infty} x(t) \cdot \psi^* \left( \frac{t-b}{a} \right) dt \quad (4)$$

where  $a$  is the scale parameter,  $b$  is the translation parameter and the asterisk indicates the complex conjugate. The relative contribution of the signal energy is provided by the scalogram  $E(a,b)$  defined in (5), which creates an alternative representation to the one created by the STFT:

$$E(a,b) = |T(a,b)|^2, \quad (5)$$

While wavelets can be both real and complex, for time-frequency analysis, complex Morlet wavelets (6) are usually preferred [28]:

$$\psi(t) = \frac{1}{\sqrt{\pi f_b}} \exp \left( j2\pi f_c t - \frac{t^2}{f_b} \right) \quad (6)$$

with  $f_c$  being central frequency of the wavelet and  $f_b$  the bandwidth. Furthermore,  $f_c$  can be used to transform scale to “pseudo-frequency” given by (7), which is a notion more familiar to engineers:

$$f = \frac{f_c}{a} f_{samp} \quad (7)$$

where  $f_{samp}$  is the sampling frequency in Hz. Fig. 3 depicts the result of the application of the CWT to a simulated motor with one broken bar and mixed-eccentricity (35% static and 35% dynamic). This is the same case as the one depicted on the bottom of Fig. 2. The V pattern caused by the broken bar is clearly visible, where the eccentricity related pattern is more smeared. However the steady state component is clearly visible. In the following Section of the paper it will be shown that both representations can be used for further processing of the start-up current.

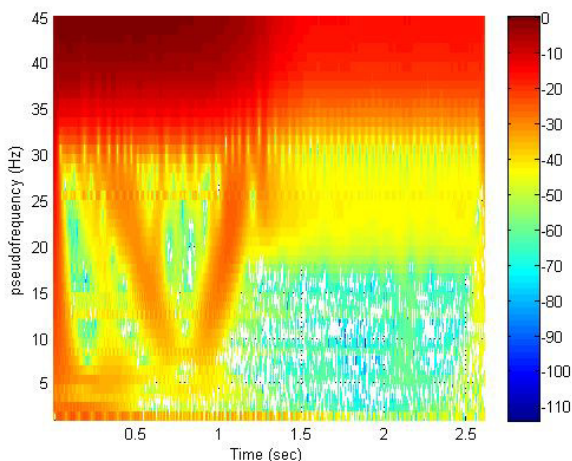


Fig. 3. Time-(pseudo)frequency plane for a motor with both mixed-eccentricity (35% static and 35% dynamic) and one broken bar created using the Morlet complex wavelet.

## C. Dimensionality Reduction

Time-frequency transforms create a time-frequency representation, practically an image, which has quite high dimensionality. In order to alleviate the “curse of dimensionality problem”, two dimensionality reduction techniques are employed.

### 1) 2D Piecewise Aggregate Approximation

PAA was originally developed for one dimensional signals [29], [30] but since then a two dimensional variant has also been used for reducing the dimensionality of images [26], [31].

In the two dimensional case, the original image  $I$  with dimensions  $N \times M$  is turned into an image  $\bar{I}$  of lower dimensions  $p_1 \times p_2$  where:

$$\bar{I}(i,j) = \frac{p_1 p_2}{NM} \sum_{x=\frac{M}{p_1}(i-1)+1}^{\frac{M}{p_1}i} \sum_{y=\frac{N}{p_2}(j-1)+1}^{\frac{N}{p_2}j} I(x,y) \quad (8)$$

Practically (8) indicates that we replace a block of the image with its mean values. Fig. 4 depicts the corresponding PAA representations of the spectrograms of Fig. 2 (using only the frequency components bellow 45Hz, since the components of interest lie in the lower part of the spectrogram). Similar representations are created also for the case of CWT.

### 2) Principal Component Analysis

Even after the application of PAA, the resulting image has a dimension (for this specific implementation) of 10x5, which means that a feature vector of 50 elements will be created. Therefore a second stage is employed to further reduce the dimensionality. In the field of dimensionality reduction many algorithms have been proposed over the past decade. However, it turns out that PCA [32] can be quite competitive compared to other more advanced methods, when it comes to real life problems [33].

PCA transforms the original data by projecting them to just a few of the eigenvectors of their covariance matrix that correspond to the largest eigenvalues. This way dimensionality reduction is achieved. Furthermore, the new features are uncorrelated, which can sometimes lead to an increased classification performance [34].

## D. Multi-label classification

Standard classification algorithms assume that a given instance (also referred to as example or data point) is associated with a single label  $\lambda_i$  from a set of disjoint labels  $\Lambda$  [21]. In other words, each instance belongs to just one class  $\lambda_i$ . However, in some domains, such as text categorization, instances can actually be associated with a set of labels  $Y \subseteq \Lambda$ , or using a pattern classification terminology, instances can belong to more than one classes. This kind of problems falls under the umbrella of multi-label classification and can be addressed basically by two approaches: a) Problem Transformation and b) Algorithm adaptation.

The first one involves the transformation of the multi-label classification problem into one or more single-label classification problems, which can be tackled with any

conventional classification algorithm. In other words, the original data set is transformed into more than one data sets, with the number of data sets depending on the transformation method, where each data point is labeled with just one label. The labeling also depends on the transformation method as it is explained in the following subsections.

The second one, as its name implies, relies on the adaptation of classification algorithms to directly handle multiple labels per instance. In other words, the classifiers are trained using more than one label per data point and are meant to produce a set of labels for each one of the new unseen data.

In this work only methods from the problem transformation approaches are investigated: The Label Powerset (LP) approach, the Binary Relevance (BR), and the Calibrated Label Ranking [21], [23].

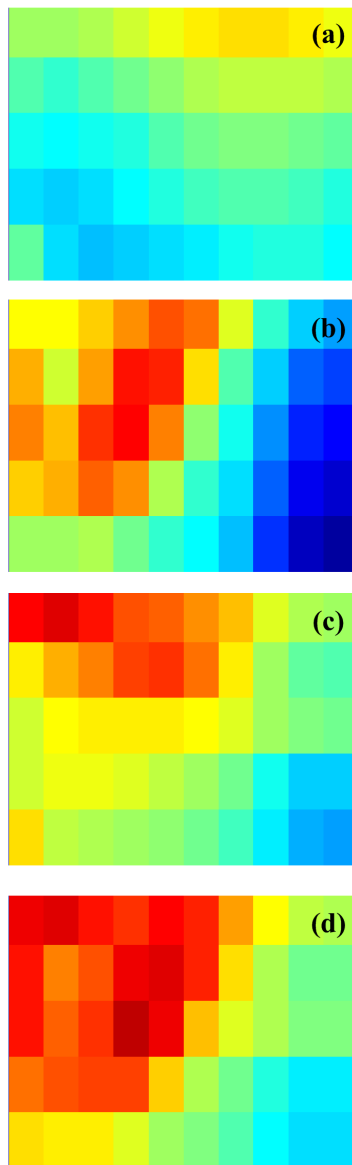


Fig. 4 2D PAA corresponding to the cases depicted in Fig. 2. From top to bottom, healthy motor, motor with one broken bar, motor with eccentricity, (35% static and 35% dynamic), and finally motor with both mixed-eccentricity (35% static and 35% dynamic) and one broken bar.

### 1) Label Powerset

The LP transformation simply treats each unique label set encountered in the training set as one of the classes in a multiclass classification scheme. Therefore, after the transformation, any conventional multiclass algorithm can be used. For example, let's consider the following hypothetical data sample shown in Table I. The original dataset has three labels  $\{\lambda_1, \lambda_2, \lambda_3\}$  (e.g. in a fault detection framework for induction motors the labels could be {broken bar, eccentricity, bearing fault}). The transformed data shown in Table II, will have four classes. Note that in the second column we no longer have sets but single labels – i.e.  $\lambda_{1-2}$  is a single label that means that this label/class corresponds to labels  $\lambda_1$  and  $\lambda_2$  (e.g. {broken bar and eccentricity}) of the original data set.

LP has the advantage of taking into consideration potential correlations between the labels. On the other hand it has the disadvantage that it can become computationally intractable for large label sets, with many of the newly created classes having very few training data. For this specific application, due to the small number of classes, computational complexity is not an issue.

### 2) Binary Relevance

BR creates  $q$  new data sets, where  $q$  is the number of unique labels, in the original data set as shown in Table III. Each new data set is used to train a (binary) classifier that learns to discriminate the corresponding label/class against the rest of the classes (one vs all approach). In other words, an instance either has a specific fault or not. Furthermore, BR does not suffer from the complexity problem of the LP method, but on the other hand it cannot take into consideration potential correlations between the labels.

### 3) Calibrated Label Ranking

CLR [35] is an extension of the Ranking by Pairwise Comparison (RPC) method. While BR is a “one vs all” approach, RPC is a “one vs one” approach having binary classifiers learning to discriminate between two labels at a time. RPC works by first creating  $q(q-1)/2$  datasets, one for each pair of labels  $(\lambda_i, \lambda_j), i, j \in [1, q], i \neq j$ . Each one of these data sets contains instances from the original dataset that were annotated by at least one of the two labels of the pair under investigation, but not by both of them. The datasets corresponding to RPC for our original example are shown in table IV.

As it can be seen not all instances from the original dataset are part of the newly created dataset. When a new instance example is to be classified, all trained classifiers are invoked and the votes obtained by them are used to create a ranking for the labels. In other words, and as its name implies, RPC creates a ranking of the labels. Thus, PRC does not automatically provide a set of labels and it needs a function to decide how many of the top ranked labels should be selected to annotate the unknown example. CLR solves this problem of bipartitioning a ranking list by introducing an additional virtual label  $\lambda_0$ . As in the case of BR, a new dataset is created

for each label  $\lambda_i$ , corresponding to the pair  $(\lambda_i, \lambda_0)$ . For each instance that contains the label  $\lambda_i$  the virtual label is considered false and vice versa. The number of votes received for the virtual label acts as a breaking point of the ranking into relevant (to be assigned to the unknown instance) and irrelevant labels.

In general, it should be highlighted that CLR has problems when dealing with datasets having many labels, since the number of pairwise comparisons can become very large. However, for this specific application, as for the case of LP, this is not an issue.

TABLE I  
ORIGINAL DATASET

Examples	Label set
1	$\{\lambda_1, \lambda_2\}$
2	$\{\lambda_1\}$
3	$\{\lambda_1, \lambda_3\}$
4	$\{\lambda_3\}$
5	$\{\lambda_2, \lambda_3\}$

TABLE II  
LABEL POWERSET

Examples	Label
1	$\lambda_{1-2}$
2	$\lambda_1$
3	$\lambda_{1-3}$
4	$\lambda_3$
5	$\lambda_{2-3}$

TABLE III  
BINARY RELEVANCE SETS

Data set - $\lambda_1$		Data set - $\lambda_2$		Data set - $\lambda_3$	
Examp.	Label	Examp.	Label	Examp.	Label
1	$\lambda_1$	1	$\lambda_2$	1	$\neg\lambda_3$
2	$\lambda_1$	2	$\neg\lambda_2$	2	$\neg\lambda_3$
3	$\lambda_1$	3	$\neg\lambda_2$	3	$\lambda_3$
4	$\neg\lambda_1$	4	$\neg\lambda_2$	4	$\lambda_3$
5	$\neg\lambda_1$	5	$\lambda_2$	5	$\lambda_3$

<sup>a</sup>.  $\neg\lambda_i$  corresponds to NOT  $\lambda_i$

TABLE IV  
RANKING BY PAIRWISE COMPARISON SETS

Data set - $(\lambda_1, \lambda_2)$		Data set - $(\lambda_1, \lambda_3)$		Data set - $(\lambda_2, \lambda_3)$	
Examp.	Label	Examp.	Label	Examp.	Label
1	x	1	$\lambda_1, \neg\lambda_3$	1	$\lambda_2, \neg\lambda_3$
2	$\lambda_1, \neg\lambda_2$	2	$\lambda_1, \neg\lambda_3$	2	x
3	$\lambda_1, \neg\lambda_2$	3	x	3	$\neg\lambda_2, \lambda_3$
4	x	4	$\neg\lambda_1, \lambda_3$	4	$\neg\lambda_2, \lambda_3$
5	$\neg\lambda_1, \lambda_2$	5	$\neg\lambda_1, \lambda_3$	5	x

<sup>b</sup>. X corresponds to an instance not included in the "pairwise" dataset

### E. Basic Classifiers

As it was mentioned, the problem transformation methods have the advantage that common classifiers can be used once the transformed data sets are created. As it was shown, BP and CLR result in a number of binary classification problems, while LP creates just one data set with many labels (multiclass problem). In this work, for both the multiclass classification problem, as well as for the binary classification problems, two simple classifiers, a linear and a nonlinear one are tested. Both of these two classifiers can be used either as binary or multiclass classifiers.

#### 1) Minimum Mahalanobis Distance classifier

One of the simplest linear classifiers is the Minimum Mahalanobis Distance (MMD) classifier [37]. The MMD classifier has the advantage that it does not require the tuning of any parameters.

The classifier assigns a new instance  $\mathbf{x}$  to class  $i$ , which maximizes the following quantity

$$i = \arg \max_{l=1 \dots L} \left\{ 2 \ln(P(\omega_l)) - (\mathbf{x} - \boldsymbol{\mu}_l)^T \mathbf{C}^{-1} (\mathbf{x} - \boldsymbol{\mu}_l) \right\} \quad (9)$$

where  $P(\omega_l)$  is the apriori probability of occurrence of class  $\omega_l$ ,  $\boldsymbol{\mu}_l$  is the average vector of class  $\omega_l$  and  $\mathbf{C}$  is the covariance matrix of the training data, which is considered the same for all classes. Despite its simplicity, the MMD classifier is quite competitive when dealing with real life problems [38].

#### 2) Nearest Neighbor classifier

The nearest neighbor (NN) classifier belongs to the family of "lazy" classifiers [39], while the term lazy comes from the fact that no training takes place. The NN in its basic implementation, stores all training data and once a new instance is to be classified, it assigns to it the label of its closest training instance. NN can be quite effective especially in low dimensional spaces because it can create nonlinear boundaries between the different classes.

## III. EVALUATION PROCEDURE OF THE PROPOSED MULTI-LABEL FRAMEWORK

In order to test the effectiveness of the multi-label classification procedure to deal with the diagnosis of induction faults during start-up, a number of stator current waveforms were generated by the simulation model described in the next subsection. These waveforms were processed using both STFT and CWT and then, after the feature extraction stage, were utilized for the three different multi-label approaches presented in Section II.

### A. Simulation model

The analytical model used to obtain the simulated waveforms follows the magnetic coupled circuits approach and can be summarized for a machine having  $m$  stator and  $n$  rotor phases in  $m+n$  equations in the form of:

$$[U_s] = [R_s] [I_s] + \frac{d[\Psi_s]}{dt} \quad (10)$$

$$[0] = [R_r][I_r] + \frac{d[\Psi_r]}{dt} \quad (11)$$

where the first equation is applied to each of the stator circuits whereas the second is valid for the rotor ones, with,  $[U_s]$  the vector of stator voltages,  $[I_s]$  the vector of stator currents,  $[I_r]$  the vector of rotor currents,  $[\Psi_s]$  the vector of stator fluxes,  $[\Psi_r]$  the vector of rotor fluxes,  $[R_s]$  the stator resistance matrix,  $[R_r]$  the rotor resistance matrix. The flux linkages are:

$$[\Psi_s] = [L_{ss}][I_s] + [L_{sr}][I_r] \quad (12)$$

$$[\Psi_r] = [L_{sr}]^T[I_s] + [L_{rr}][I_r] \quad (13)$$

where  $L_{ss}$  is the stator inductance matrix,  $L_{sr}$  is the stator-rotor inductance matrix, and  $L_{rr}$  is the rotor inductance matrix. The computation of self and mutual inductances, for the previous equations has to be accurately done in order to properly show the effects of the fault. This has been carried out by taking into account the position of all the conductors along the airgap, using the yoke flux instead of the airgap flux and utilizing the circular convolution to compute this magnitude from the conductors' distribution [40].

Broken bars are simulated by increasing the resistance of the respective element up to a level where the respective current is negligible. Eccentricity is reproduced by modifying the airgap's permeance value in a single step through altering the length of the airgap according to two sinusoidal distributions relative to the rotor, one independent of its instantaneous angle with respect to the stator  $\theta_r$ , for simulating dynamic eccentricity, and the other that unwinds its movement for static eccentricity. The computation of the inductances is performed for all the rotor positions  $\theta_r$ . The computed values are stored in a lookup table, which is used in the simulation.

The machine model is completed with the equation for the calculation of the electromagnetic torque and Newton's second law for rotation. Since under mixed eccentricity all the inductance matrices vary with the rotor position, this has to be reflected in the coenergy derivative when computing the torque [41] compared to [40]:

$$T_m = \frac{1}{2} \left[ [I_s^t] \frac{\partial [L_{ss}]}{\partial \theta_r} [I_s] + [I_s^t] \frac{\partial [L_{sr}]}{\partial \theta_r} [I_r] + [I_r^t] \frac{\partial [L_{sr}^T]}{\partial \theta_r} [I_s] + [I_r^t] \frac{\partial [L_{rr}]}{\partial \theta_r} [I_r] \right] \quad (14)$$

$$T_m - T_L = J \frac{d\Omega}{dt} = J \frac{d^2\theta_r}{dt^2} \quad (15)$$

where  $T_m$  is the motor's electromagnetic torque,  $T_L$  is the load torque,  $J$  is the moment of inertia and  $\Omega$  is the angular speed of the motor.

As formulated, this model reproduces accurately the frequencies of the flux and current components associated to the faults. However, since no saturation is considered, their amplitudes are magnified. In order to avoid this, the airgap permeance variation is scaled to approximate the fault harmonic's amplitudes obtained from experimental testing of the same machine. Although more rigorous approaches can be included in the model [41],[42], this suffices for the purpose of this work.

### B. Experimental Procedure - Results

In order to test the performance of the multi-label classification approach in fault diagnosis of induction motors, a number of experiments were conducted. Using the simulation model described in the previous subsection, a motor with two pair of poles is simulated for the following scenarios: a) healthy motor, b) motor with one broken bar, c) motor with mixed eccentricity and d) motor with mixed eccentricity and one broken bar. For each condition, ten different start-ups are generated with different durations. For the case of mixed eccentricity, various degrees of static and dynamic eccentricity are simulated with the minimum value being equal to 5% and the maximum equal to 35%.

For the case of the BR transformation a hierarchical classification approach is imposed taking into consideration that the healthy category cannot appear simultaneously with any other class. In other words, an example cannot be both healthy and belong to any of the fault classes at the same time. Therefore, first a binary classifier decides whether the new sample is healthy or not, and -if it is not healthy- the standard BR approach is invoked to decide to which class(es) the new sample belongs. This procedure is illustrated in Fig. 5.

The processing of the stator currents was performed by STFT and CWT, to verify the robustness of the multi-label classification framework. In both sets of experiments (STFT and CWT), during the final stage of the dimensionality reduction process, four different values for the number of retained components are tested (two, three, four and five). As it can be seen from the scree plots (the plots of the eigenvalues versus the index of the eigenvector) [43] in Fig. 6 for both the STFT and the CWT, the first few principal components seem to summarize all the relevant information. The leave-one-out (loo) testing procedure is used for every experiment and all the results of this study in terms of absolute accuracy are summarized in Table V and Table VI for the case of STFT and CWT respectively. At this point it should be noted that since the findings presented in [20] are based on eye inspection, no direct comparison of the proposed method with [20] is possible.

From Tables V and VI it can be observed that the CWT representation is better fitted for the analysis of the start-up current for the diagnosis of combined faults when compared to the use of STFT. However, STFT also leads to very high performance if more than three principal components are retained. In terms of the retained principal components, three or more is a reasonable choice. The MMD classifier also has a slightly better performance compared to the 1-NN classifier.



As it was pointed out in [38], MMD can be very competitive when it comes to real life problems. Regarding the effectiveness of the three different multi-label schemes (LP, BR and CLR), LP is slightly better with the other two schemes having similar performance. It should also be noted that in case of fault combinations that are not present in the data base, e.g. when data from single bearing faults are available, the LP method will not be able to recognize them. This is because the LP method has to have training data from all the potential combinations. Therefore, on one hand LP has a slightly superior performance compared to the other two investigates methods, but on the other hand the price to be paid is the need for a data set with a complete representation of all the potential combination of labels (faults).

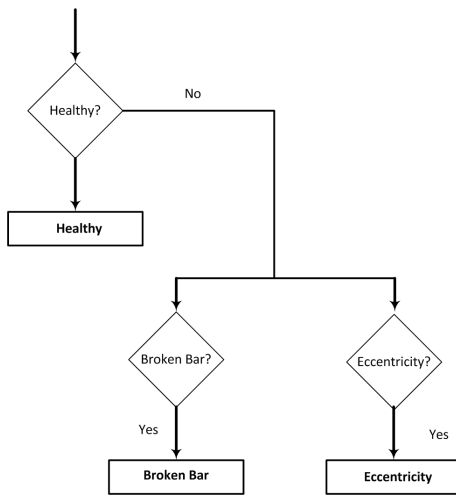


Fig. 5. Schematic of the hierarchical approach in the case of BR method.

TABLE V  
CLASSIFICATION RESULTS-STFT

PCs	MMD classifier			1-NN classifier		
	LP	BR	CLR	LP	BR	CLR
2	90%	92.5%	92.5%	95%	92.5%	95%
3	100%	97.5%	95%	97.5%	97.5%	97.5
4	100%	97.5%	97.5%	97.5%	97.5%	100%
5	100%	97.5%	97.5%	97.5%	97.5%	100%

<sup>c</sup>: PCs-Principal Components

TABLE VI  
CLASSIFICATION RESULTS-CWT

PCs	MMD classifier			1-NN classifier		
	LP	BR	CLR	LP	BR	CLR
2	100%	100%	100%	100%	100%	98.8%
3	100%	100%	100%	100%	100%	98.8%
4	100%	100%	97.5%	100%	100%	98.8%
5	100%	100%	100%	100%	100%	100%

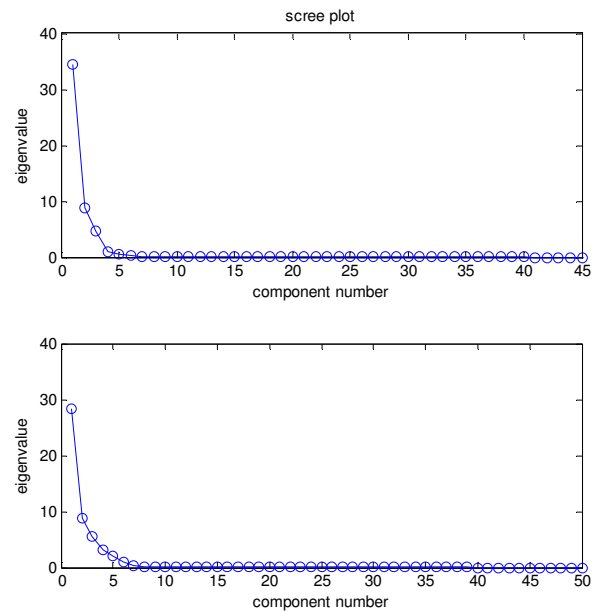


Fig. 6. Scree plot of the principal components indicating that most of the data's variance is summarized by the first few principal components.

#### IV. CONCLUSIONS

A multi-label classification approach for the diagnosis of multiple faults in induction motors was presented. This is the first time that such an approach is employed for the case of induction motors during the start-up, therefore direct comparison with similar schemes is not possible. As it was presented, the proposed scheme was applied in the cases of broken bars and mixed-eccentricity with promising results. The three transformation schemes (LP, BR and CLR) yielded comparable results, with the LP method outperforming the other two in most experiments, irrespective of the selected time-frequency representation. However, as it was stated in the previous section, LP cannot cope with the combination of faults that it has not been explicitly trained to recognize. Therefore, in real life applications any of the other two methods could also be considered, at least until a representative data base including all faults is built. Regarding the number of retained principal components, three to five seems to be a good choice for this specific setting.

The proposed approach is a data driven approach. Therefore, further investigation is needed involving more data as well as data coming from experimental settings and more importantly data coming from industrial settings before the method can be applied to real life situations. Further investigation is also required regarding the selection of "optimal" parameters of the feature extraction stages, even though the method seems to work with high levels of accuracy for a range of parameters and for different time frequency representations. On the other hand, the method is generic enough so as to be applied to different scenarios. More importantly the multi-label framework can be applied to different application areas where multiple states can occur concurrently, without any major modifications. However, the

selection of the most appropriate multi-label classification scheme is application dependent.

In future work the proposed approach will be tested with the inclusion of other fault conditions, such as bearing faults and winding shorts. Furthermore, different severity levels within a specific fault class will be investigated, e.g. broken bar faults with more one broken bars. Moreover, the method will be tested using experimental data. Finally, regarding the specific application, which relies on the frequency content at different parts of the time-frequency plane, a multi-instance classification approach, which does not use a single feature vector to describe each condition, will be tested [44].

## REFERENCES

- [1] A. S. Nandi and H. Toliyat, "Condition monitoring and fault diagnosis of electrical machines-a review," *IEEE Transactions on Energy Conversion*, vol. 20, no. 4, pp. 719-729, Dec. 2005.
- [2] G. Georgoulas, M.O. Mustafa, I. P. Tsoumas, J. A. Antonino-Daviu, V. C. Alarcon, C.D. Stylios, and G. Nikolakopoulos, "Principal Component Analysis of the start-up transient and Hidden Markov Modeling for broken rotor bar fault diagnosis in asynchronous machines", *Expert Systems with Applications*, vol. 40, no. 17, pp 7024-7033, 2013.
- [3] O. Mustafa, G. Nikolakopoulos and T. Gustafsson, "Stator winding short circuit fault detection based on set membership identification for three phase induction motors", in *Proc. 20th Mediterranean Conference on Control and Automation*, 2012.
- [4] P.M. Santos and T. Lubiny, "A simplified induction machine model to study rotor broken bar effects and fault detection," *European Transactions on Electrical Power*, vol. 20, p. 611, 2010.
- [5] G.G. Acosta, C. J. Verucchi, and E. R. Gelso, "A current monitoring system for diagnosing electrical failures in induction motors," *Mechanical Systems and Signal Processing*, vol. 20, no. 4, pp. 953-965, Oct 2004.
- [6] S. Nandi, T.C. Ilamparithi, L. Sang and H. Doosoo, "Detection of Eccentricity Faults in Induction Machines Based on Nameplate Parameters," *IEEE Trans. Ind. Electron.*, vol. 58, no. 5, pp 1673-1683, July, 2010.
- [7] N.M. Elkasabgy, A.R. Eastham, and G.E. Dawson, "Detection of broken bars in the cage rotor on an induction machine", *IEEE Trans. Ind. Appl.*, vol. 28, no. 1, pp. 165-171, 1992.
- [8] A. Khezzar, M. Oumaamar, M. Hadjami, M. Boucherma and H. Razik, "Induction motor diagnosis using line neutral voltage signatures," *IEEE Trans. Ind. Electron.*, vol. 56, no. 11, pp. 4581-4591, 2009.
- [9] V. Trana, B. Yanga, M. Oha, and A. Tanb, "Fault diagnosis of induction motor based on decision trees and adaptive neuro-fuzzy inference," *Expert Systems with Applications*, vol. 36, no. 2, pp. 1840-1849, 2009.
- [10] S.H. Kia, A.M. Mabwe, H. Henao and G.A. Capolino, "Wavelet based instantaneous power analysis for induction machine fault diagnosis," in *Proc. of the 32nd IEEE annual conference on industrial electronics IECON*, pp. 1129-1234, 2006.
- [11] M. Benbouzid, "A review of induction motors signature analysis as a medium for faults detection", *IEEE Trans. Ind. Electron.*, vol. 47, no. 5, pp. 984-993, 2000.
- [12] B.M. Ebrahimi, J. Faiz and M.J. Roshtkhari, "Static-, Dynamic-, and Mixed Eccentricity Fault Diagnoses in Permanent-Magnet Synchronous Motors," *IEEE Trans. Ind. Electron.*, vol. 56, no. 11, pp. 4727-4739, 2009.
- [13] W.T. Thomson, M. Fenger, "Current signature analysis to detect induction motor faults," *IEEE Industry Applications Magazine*, pp. 26-34, July/August 2001.
- [14] M. Pineda-Sanchez, M. Riera-Guasp, J.A. Antonino-Daviu, J. Roger-Folch, J. Perez-Cruz, and R. Puche-Panadero, "Instantaneous frequency of the left sideband harmonic during the start-up transient: A new method for diagnosis of broken bars," *IEEE Trans. Ind. Electron.*, vol. 56, no. 11, pp. 4557-4570, Nov. 2009.
- [15] J. Pons-Llinares, J.A. Antonino-Daviu, M. Riera-Guasp, M. Pineda-Sanchez, and V. Climente-Alarcon, "Induction Motor Diagnosis Based on Transient Current Analytic Wavelet Transform via Frequency B-Splines," *IEEE Trans. Ind. Electron.*, vol. 58, no. 5, pp. 1530-1544, May 2011.
- [16] P. Karvelis, G. Georgoulas, I.P. Tsoumas, J.A. Antonino-Daviu, V. Climente-Alarcon, and C.D. Stylios, "A Symbolic Representation Approach for the Diagnosis of Broken Rotor Bars in Induction Motors," *IEEE Trans. Ind. Inf.*, vol. 11, no. 5, pp.1028-1037, 2015.
- [17] J. Antonino-Daviu, P. Jover, M. Riera, A. Arkkio, and J. Roger-Folch, "DWT analysis of numerical and experimental data for the diagnosis of dynamic eccentricities in induction motors," *Mechanical Systems and Signal Processing*, vol. 21, no. 6, pp.2575-2589, 2007.
- [18] A. Garcia-Perez, R. de Jesus Romero-Troncoso, E. Cabal-Yepez, R.A. Osornio-Rios, "The Application of High-Resolution Spectral Analysis for Identifying Multiple Combined Faults in Induction Motors", *IEEE Trans. Ind. Electron.*, Vol. 58, No. 5, 2011.
- [19] V.N. Ghatge, and S.V. Dudul, "Cascade neural-network-based fault classifier for three-phase induction motor," *IEEE Trans. Ind. Electron.*, vol. 58, no. 5, pp.1555-1563, 2011.
- [20] J. Antonino-Daviu, P. Jover Rodriguez, M. Riera-Guasp, M. Pineda-Sanchez, and A. Arkkio, "Detection of combined faults in induction machines with stator parallel branches through the DWT of the startup current," *Mechanical Systems and Signal Processing*, vol. 23, no. 7, pp. 2336-2351, 2009
- [21] G. Tsoumakas, I. Katakis, and I. Vlahavas, "Mining multi-label data." In *Data mining and knowledge discovery handbook*, pp. 667-685. Springer US, 2009.
- [22] E. Gibaja, and S. Ventura, "A tutorial on multilabel learning," *ACM Computing Surveys (CSUR)*, vol. 47, no. 3, p.52, 2010.
- [23] J. Read, "Scalable Multi-label Classification," PhD Thesis, University of Waikato, Hamilton, New Zealand. September 2010.
- [24] C.M. Vong, P.K. Wong, and W.F. Ip, "A new framework of simultaneous-fault diagnosis using pairwise probabilistic multi-label classification for time-dependent patterns," *IEEE Trans. Ind. Electron.*, vol. 60, no. 8, pp.3372-3385, 2013.
- [25] C. Yang, T.-J. Kang, D. Hyun, S.B. Lee, J.A. Antonino-Daviu, J. Pons-Llinares, "Reliable Detection of Induction Motor Rotor Faults Under the Rotor Axial Air Duct Influence," *IEEE Trans. Ind. Appl.*, vol. 50, no. 4, pp. 2493-2502, July 2014.
- [26] G. Georgoulas, P. Karvelis, C.D. Stylios, I.P. Tsoumas, J.A. Antonino-Daviu, and V. Climente-Alarcon, "Automatizing the broken bar detection process via short time Fourier transform and two-dimensional piecewise aggregate approximation representation," In *Proc. Energy Conversion Congress and Exposition (ECCE)*, pp. 3104-3110, 2014.
- [27] S. Mallat, *A Wavelet Tour of Signal Processing*. 2nd ed. Oxford: Academic Press, 1999
- [28] A. Teolis, *Computational signal processing with wavelets*, Birkhauser, 1998.
- [29] E. Keogh, K. Chakrabarti, M. Pazzani, and S. Mehrotra, "Locally adaptive dimensionality reduction for indexing large time series databases," *ACM SIGMOD Record*, vol. 30, no. 2, pp. 151-162, May 2001.
- [30] B.K. Yi and C. Faloutsos, "Fast time sequence indexing for arbitrary Lp norms," in *Proc. of the VLDB*, 2000.
- [31] J. Chen, Y.S. Moon, M.F. Wong, and G. Su, "Fingerprint authentication using a symbolic representation of images," *Image and Vision Computing*, vol. 28, no. 3, pp. 343-351, 2010.
- [32] I. Jolliffe, *Principal component analysis*. John Wiley & Sons, Ltd., 2005.
- [33] L.J. van der Maaten, E.O. Postma, H.J. van den Herik, "Dimensionality reduction: A comparative review," *Journal of Machine Learning Research*, vol. 10 pp. 66-71, 2009.
- [34] C.M. Bishop, *Neural networks for pattern recognition*. Oxford university press, 1995
- [35] J. Fürnkranz, E. Hüllermeier, E.L. Mencia, and K. Brinker, "Multilabel classification via calibrated label ranking," *Machine Learning*, vol. 73, no. 2, pp. 133-153, 2008.
- [36] E. Hüllermeier, J. Fürnkranz, W. Cheng, and K. Brinker, "Label ranking by learning pairwise preferences," *Artificial Intelligence*, vol. 172, no. 16, pp. 1897-1916, 2008.
- [37] R.O. Duda, P.E. Hart, and D.G. Stork, *Pattern classification*. John Wiley & Sons, 2002
- [38] D.J. Hand, "Classifier technology and the illusion of progress," *Statistical Science*, vol. 21, no. 1, pp. 1-14, 2006.
- [39] I.H. Witten, and E. Frank, *Data Mining: Practical machine learning tools and techniques*. Morgan Kaufmann, 2005.
- [40] M. Pineda-Sanchez, V. Climente-Alarcon, M. Riera-Guasp, R. Puche-Panadero, "Enhanced Simulink Induction Motor Model for Education

and Maintenance Training,” *Int. Journal of Systemics, Cybernetics and Informatics*, vol. 10, no. 2, 2012

- [41] S. Nandi, A detailed model of induction machines with saturation extendable for fault analysis. *IEEE Trans. Ind. Appl.*, 2004, Volume: 40, Issue: 5, Sep.-Oct. 2004 Pages: 1302 - 1309
- [42] A. Ghoggal; S. E. Zouzou; M. Sahraoui; H. Derghal; A. Hadri-Hamida, “A winding function-based model of air-gap eccentricity in saturated induction motors,” in *Proc. XXth International Conference on Electrical Machines (ICEM)*, Marseille, France, 2012.
- [43] W.L. Martinez, A.R. Martinez, and J. Solka, *Exploratory data analysis with MATLAB*. CRC Press, 2010.
- [44] Z.H. Zhou, M.L. Zhang, S.J. Huang, and Y.F. Li, “Multi-instance multi-label learning,” *Artificial Intelligence*, vol. 176, no. 1, pp.2291-2320, 2012.



George Georgoulas received the Dipl.-Eng. and Dr.-Eng. degrees in Electrical and Computer Engineering from the University of Patras, Greece, in 1999 and 2006 respectively. He is currently a post-doctorate research fellow at the Department of Computer Science, Electrical and Space Engineering at Luleå University of Technology, Sweden. He has over 100 publications in international journals, conferences and books. His main scientific interests include machine learning, computational intelligence signal processing, fault detection, diagnosis, prognosis and the development of decision support systems.



Vicente Climente-Alarcon (S'11/M'12) received his M.Sc. degrees in Chemical and Industrial Engineering in 2000 and 2011, and his Ph.D. degree in Electrical Engineering in 2012, all from the Universitat Politècnica de Valencia (Spain). He has worked as Assistant Professor in the School of Industrial Engineering of the mentioned university, on research tasks in the area of condition monitoring of electrical machines and externally as a consultant in automation and management of power systems. Currently he is a Docent at the Department of Electrical Engineering and Automation, Aalto University, Espoo, Finland. His scientific interests include the study of transients in electrical machines.



Jose Antonino-Daviu (S'04/M'08/SM'12), received his M.S. and Ph. D. degrees in Electrical Engineering, both from the Universitat Politècnica de Valencia, in 2000 and 2006, respectively. He was working for IBM during 2 years, being involved in several international projects. Currently, he is Associate Professor in the Department of Electrical Engineering of the mentioned University, where he develops his docent and research work. He has been invited professor in Helsinki University of Technology (Finland) in 2005 and 2007, Michigan State University (USA) in 2010, Korea University (Korea) in 2014 and Université Claude Bernard Lyon 1 (France) in 2015. He has over 100 publications in international journals, conferences and books. His primary research interests are condition monitoring of electric machines, wavelet theory and its application to fault diagnosis and design and optimization of electrical installations and systems



Ioannis P. Tsoumas (S'04/M'08) received the Dipl.-Eng. and Dr.-Eng. degrees in electrical and computer engineering from the University of Patras, Greece, in 2000 and 2007 respectively. From 2008 to 2015 he has been with Siemens AG, Industry Sector, Drive Technologies Division, Large Drives, Products Research & Development, Nuremberg, Germany. In 2015 he joined the ABB Corporate Research Center in Baden-Dättwil, Switzerland. His scientific interests include medium voltage power converters and drives, modulation techniques for power converters, motor-converter interaction, converter and drive system efficiency, electrical machines and drives condition monitoring and fault diagnosis. Dr. Tsoumas is member of the Association for Electrical, Electronic and Information Technologies (VDE) and of the Technical Chamber of Greece.



Dr. Chrysostomos Stylios (M'97/SM'15), is an Associate Professor at Dept. of Computer Engineering, Technological Educational Institute of Epirus, Greece. The academic year 2014-2015 is a visiting researcher at Electrical and Computer Engineering Dept., University of Alberta, Canada and at Computer Science Dept, University of Texas at El Paso. He received his Ph.D from the Department of Electrical & Computer Engineering, University of Patras (1999) and the diploma in Electrical & Computer Engineering from the Aristotle University of Thessaloniki (1992). He has published over 160 journal and conference papers and book chapters. His main scientific interests include: Fuzzy Cognitive Maps, Soft Computing, Computational Intelligence Techniques, Signal Processing methods and Decision Support Systems. Dr. Stylios is senior member of IEEE and member of the TC 8.2 and TC 5.4 of IFAC.



Antero Arkkio was born in Vehkalahti, Finland in 1955. He received his M.Sc. (Tech.) and D.Sc. (Tech.) degrees from Helsinki University of Technology in 1980 and 1988. Currently he is a Professor of Electrical Engineering at Aalto University. His research interests deal with modeling, design, and measurement of electrical machines.



George Nikolakopoulos (S'00/M'06), received his M.S. and PhD in Electrical Engineering, both from the University of Patras, Greece, in 2000 and 2006 respectively. George is currently a Professor on Robotics and Automation at the Department of Computer Science, Electrical and Space Engineering at Luleå University of Technology, Sweden. His work is focusing in the area of Robotics and Control Applications with a special focus on aerial robotics, UGVs and bio-inspired robotics. George has been the coordinator of several European (Horizon2020) and National Research Projects. His published scientific work includes more than 170 published International Journals and Conferences in the fields of his interest.