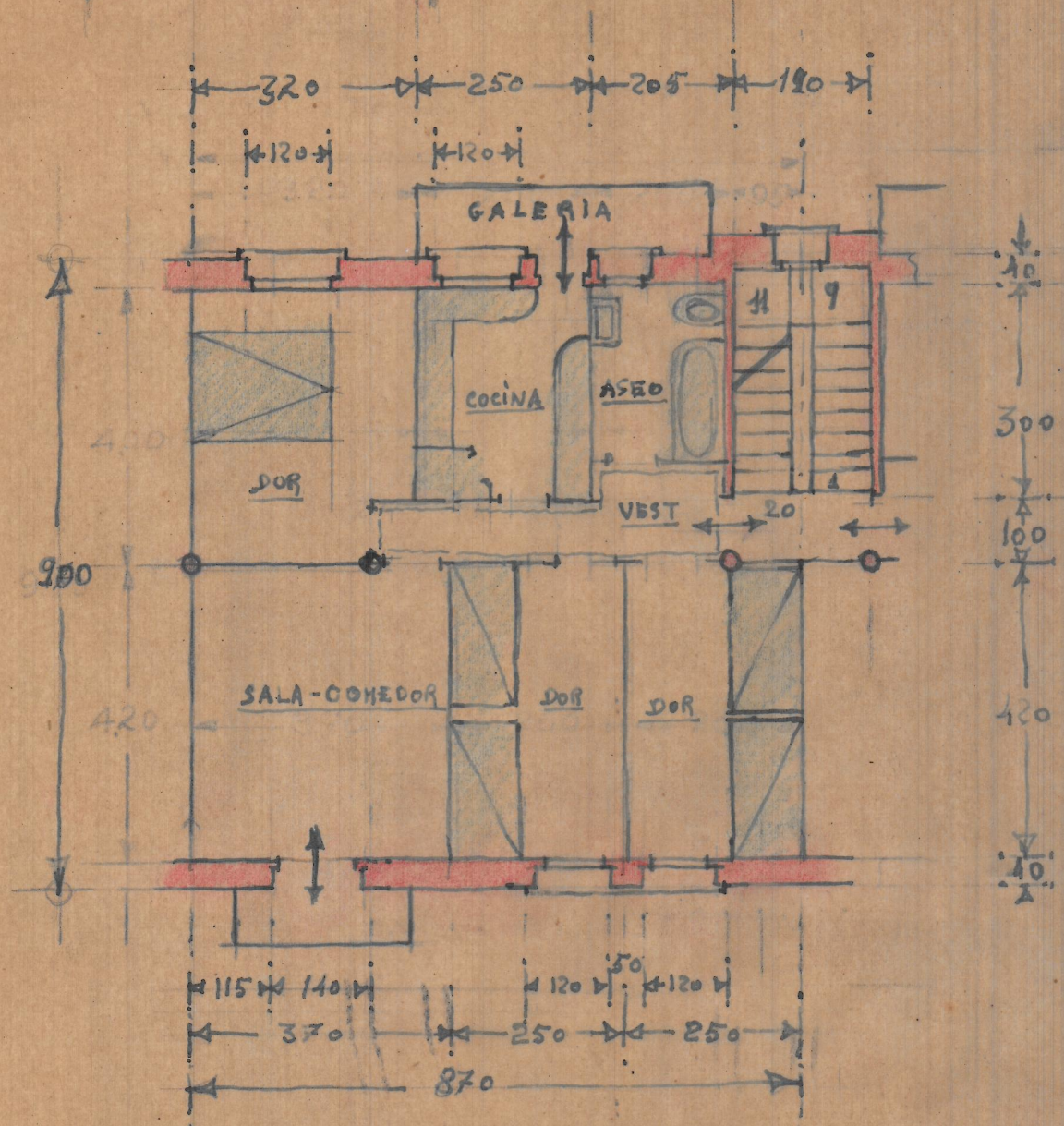
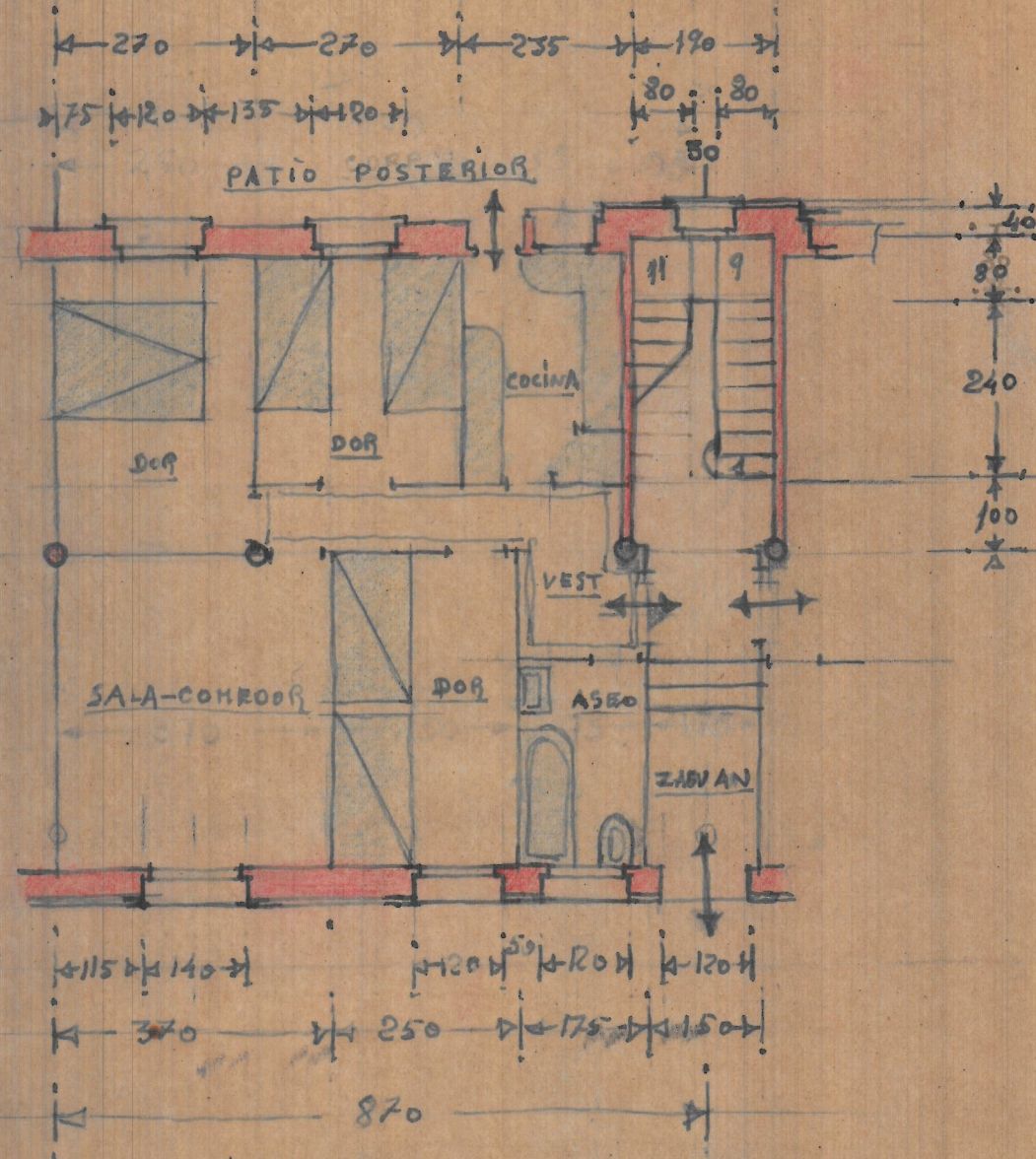


VIVIENDAS TIPO - E-100



PLANTAS ALTAS

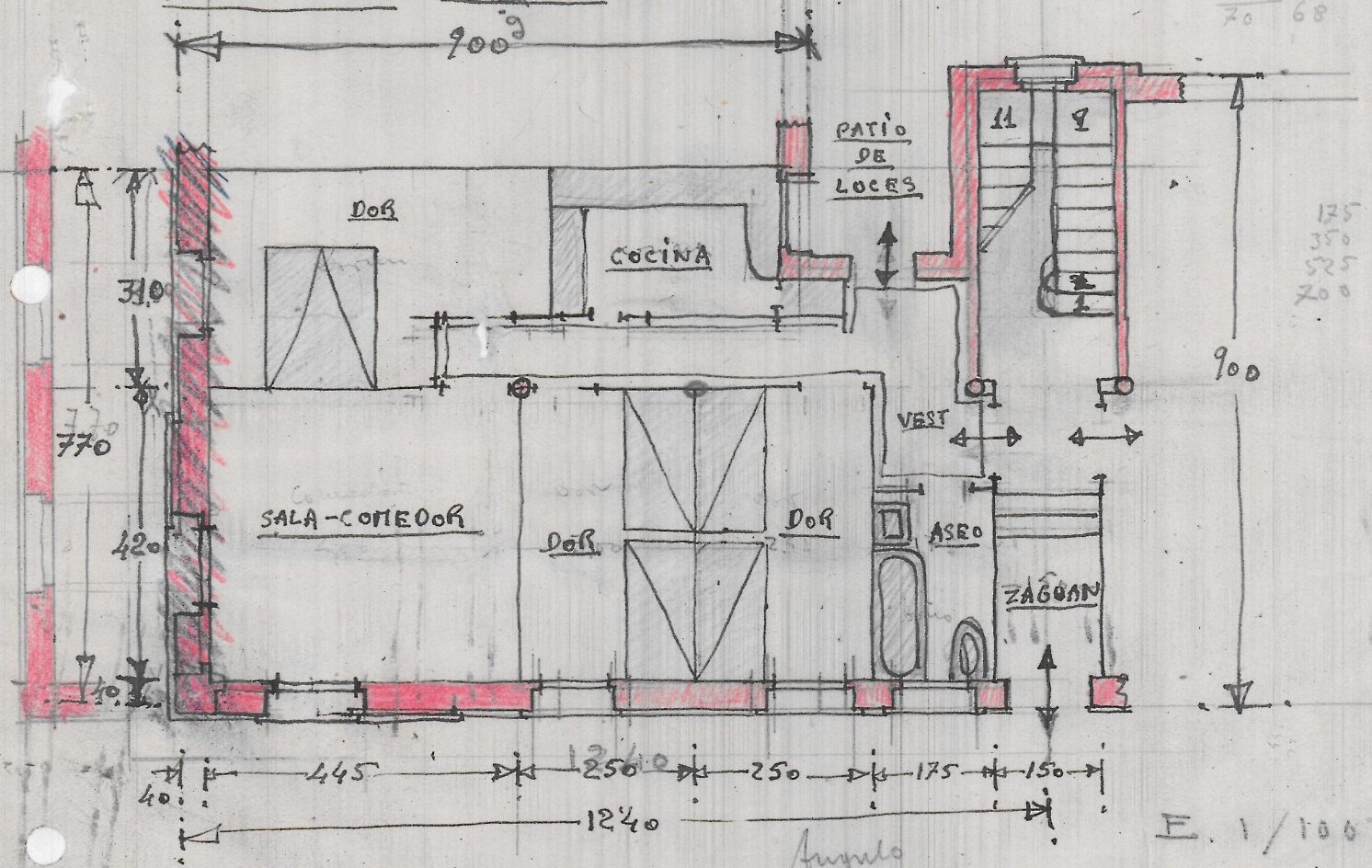


PLANTAS BAJAS



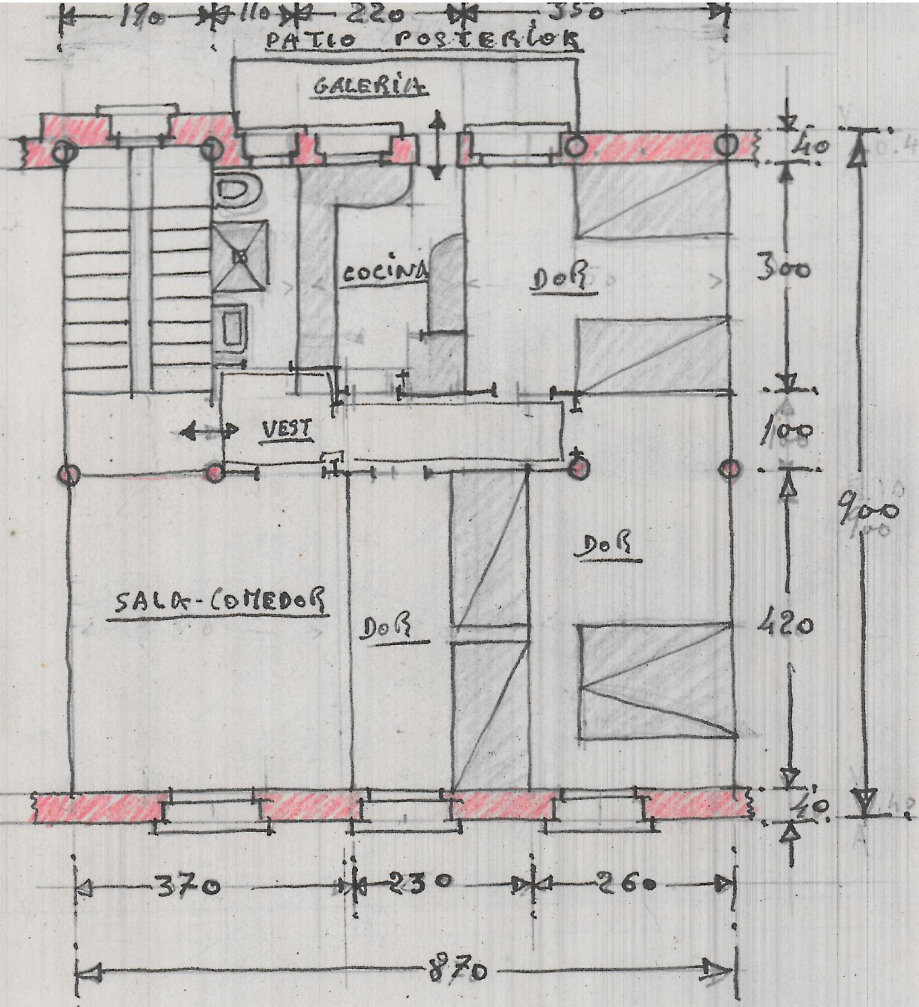
VIVIENDA DE ANGULO  
 PLANTA BAJA - E. 1:100

350 74.3  
 20 2  
 70 68



125  
 350  
 525  
 200

Angulo



VIVIENDAS  
 CENTRALES EN  
 LA FACHADA  
 PRINCIPAL  
 E-1100

planta de pisos  
 E 1100



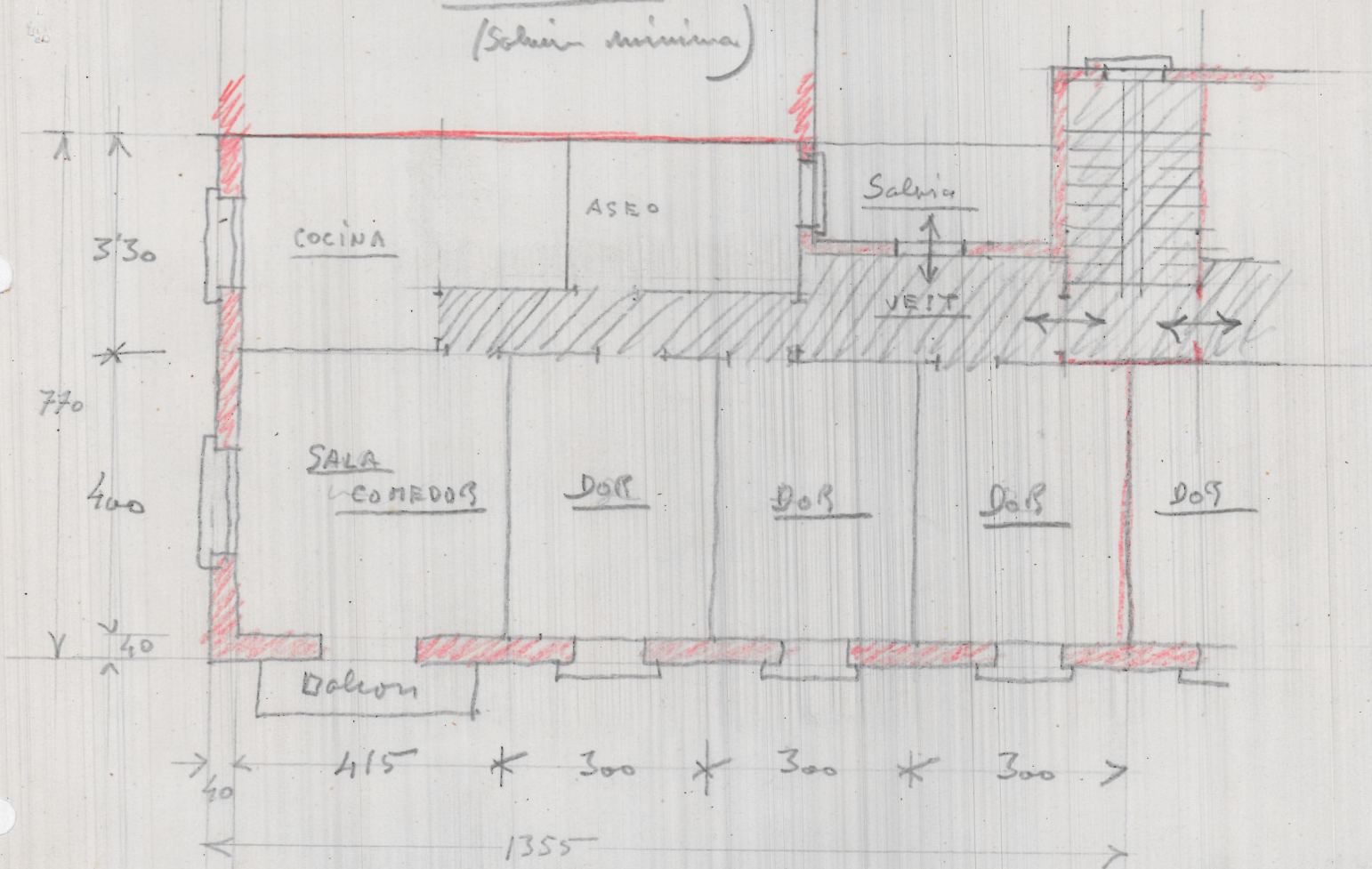








SOLUCION  
DE ANGOLO  
(Solucin minima)





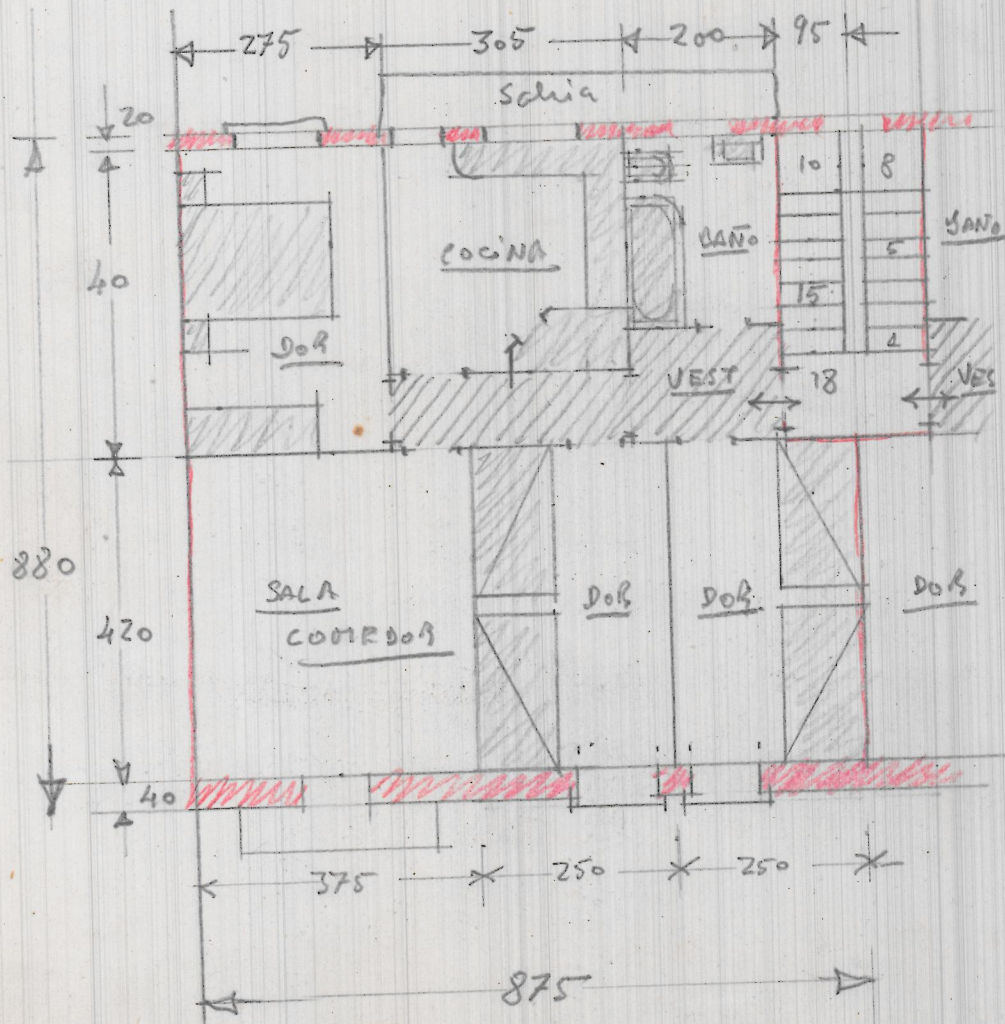
$0.40 \times 2 = \frac{4460}{0.80}$   
 $\frac{4380}{38}$   
 $\frac{876}{30}$

SOLUCION MINIMA (1)

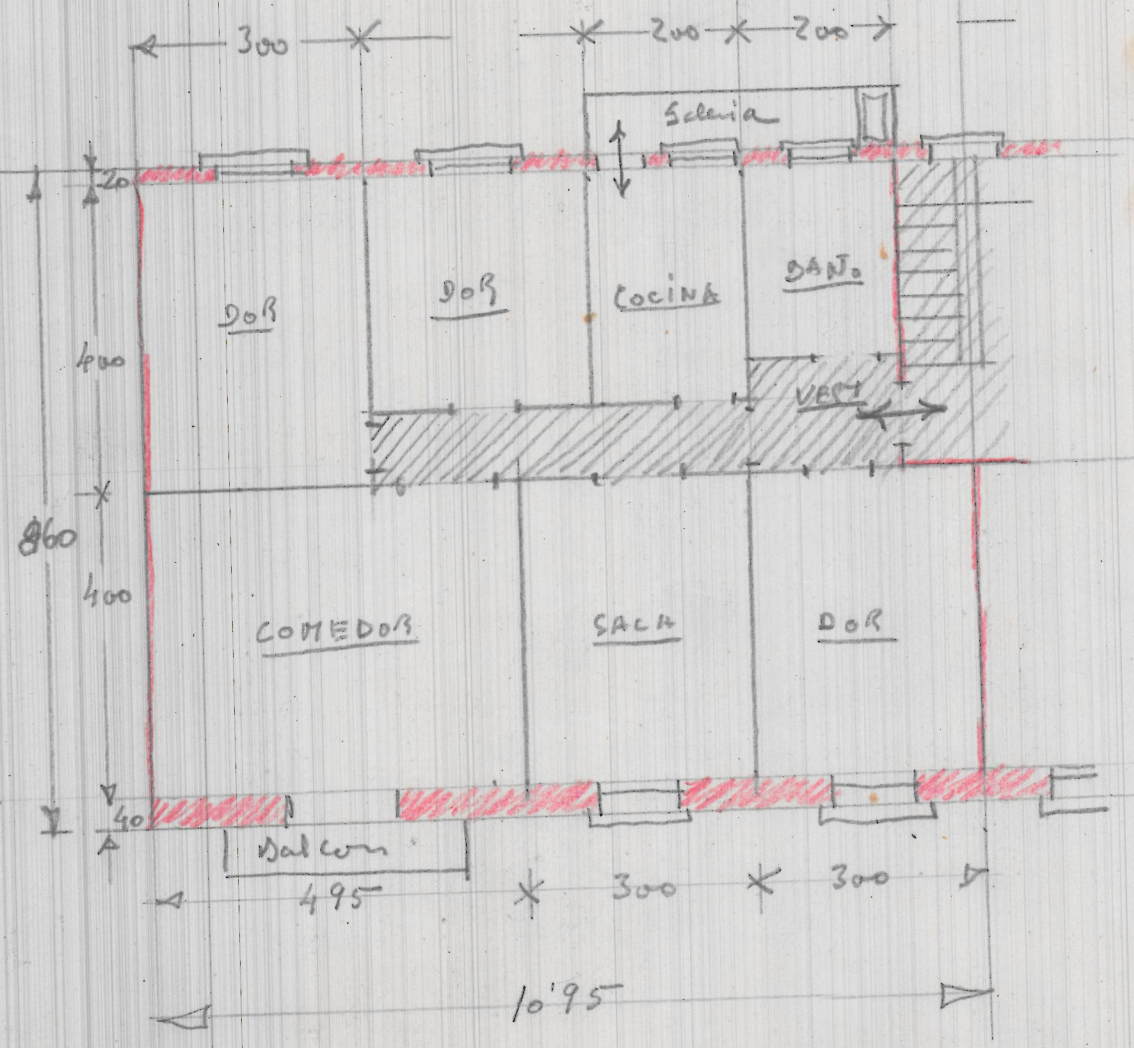
fachada  
dividida

$0.40 \times 2 = \frac{4460}{0.80}$   
 $\frac{4380}{38}$   
 $\frac{1095}{20}$  fachada  
unida

SOLUCION MAXIMA (2)

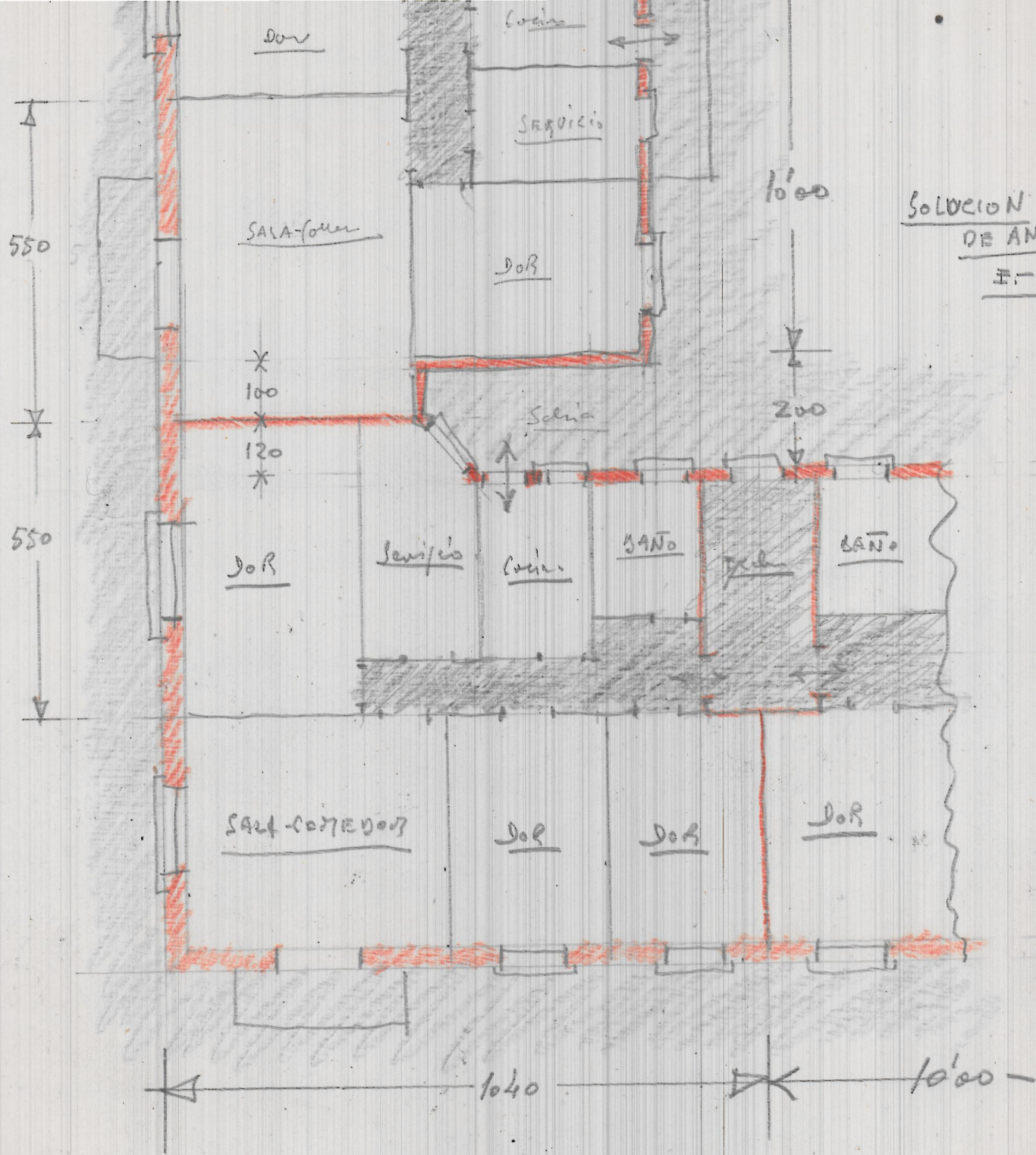


$880 \times 875 = 77 \text{ m}^2$   
 $77 \text{ a } 600 \text{ fr} = 46.200 \text{ fr}$



$860 \times 1095 = 9417 \text{ m}^2$   
 $9417 \text{ a } 600 = 56.500 \text{ fr}$





SOLUCION  
DE ANODLO  
II-25/00