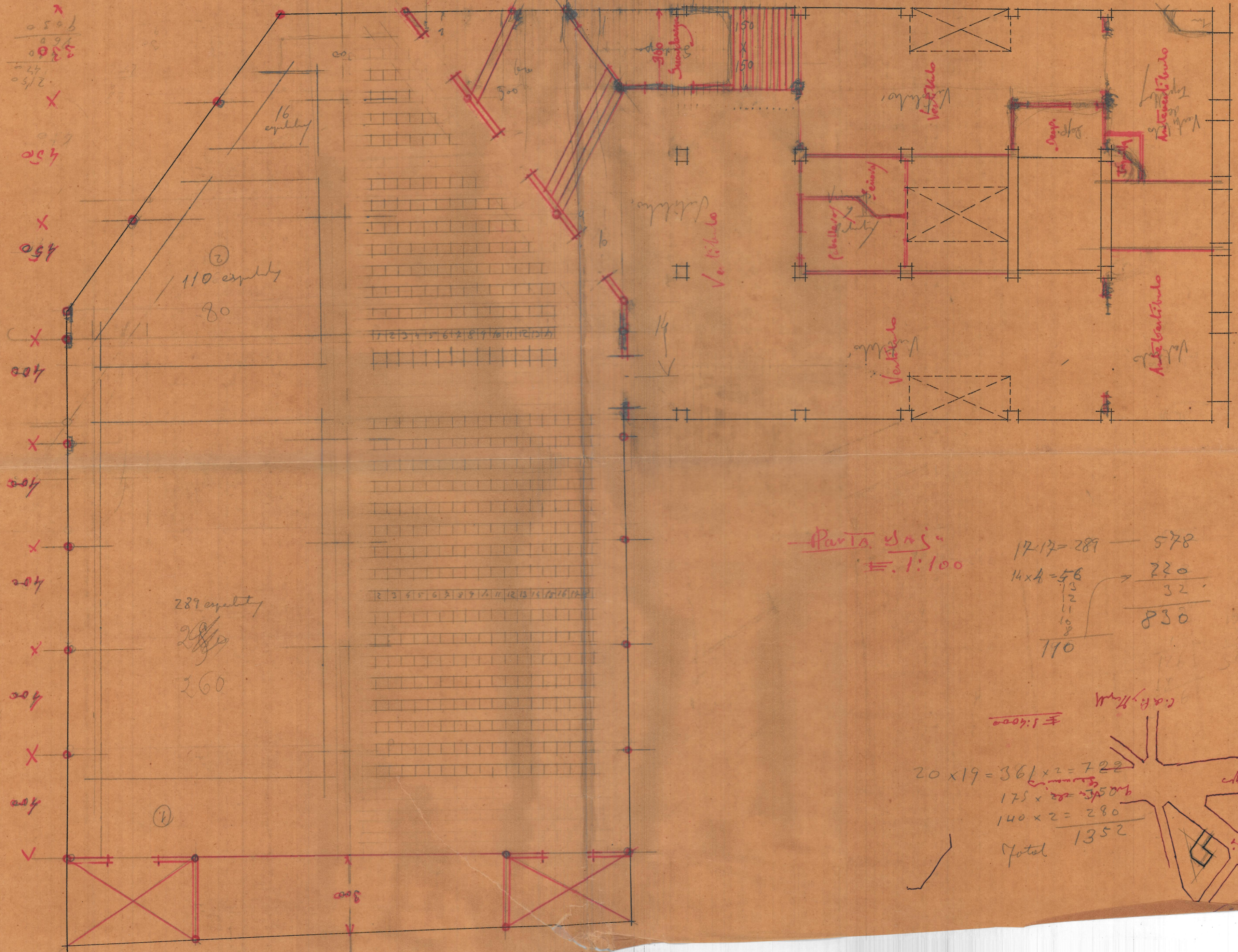


821
 128
 8
 91
 16
 505
 4
 512
 2
 0
 21
 30
 52,9281
 939131
 354125
 52
 52,807
 52,81
 5241
 1225
 10
 21
 915
 057
 028
 02
 12
 087
 07
 81 = 17.25 x 11 = 188.25
 215.15 x 11 = 2366.75
 25 x 12.5 = 312.5



Avenida de 14 de Abril

Partes de la
 E. 1:100

17-17 = 289
 14x4 = 56
 3
 2
 11
 10
 8
 110
 578
 220
 32
 830

19
 14
 126
 18
 306

E. 1:1000

20 x 19 = 361 x 2 = 722
 175 x 22 = 3850
 140 x 2 = 280
 Total 1352

