

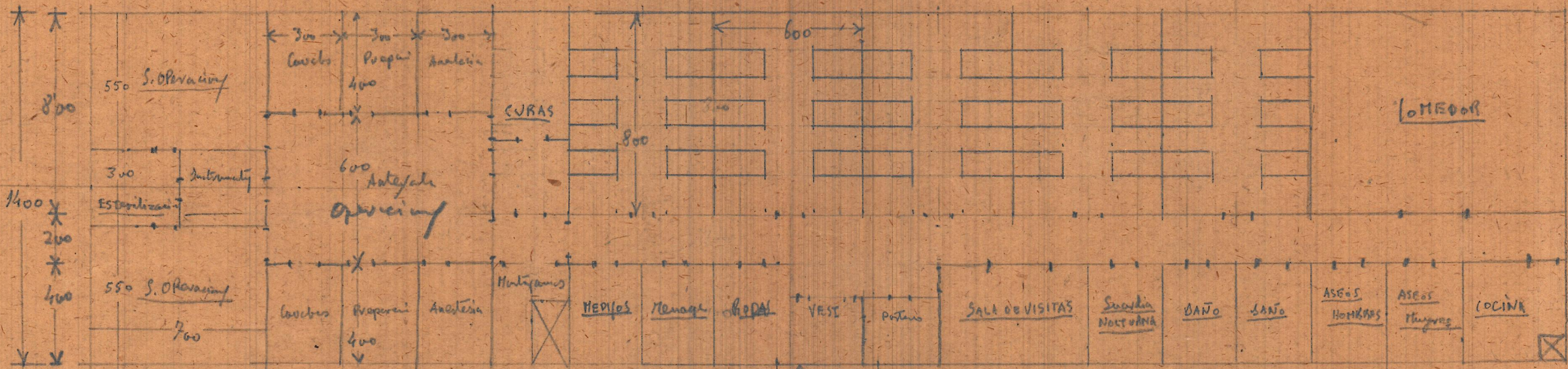
② Planta bja

3/2

$19 \times 3 + 2 = 52 + 2 = 59$

$59 \times 14 = 826 \text{ m}^2$

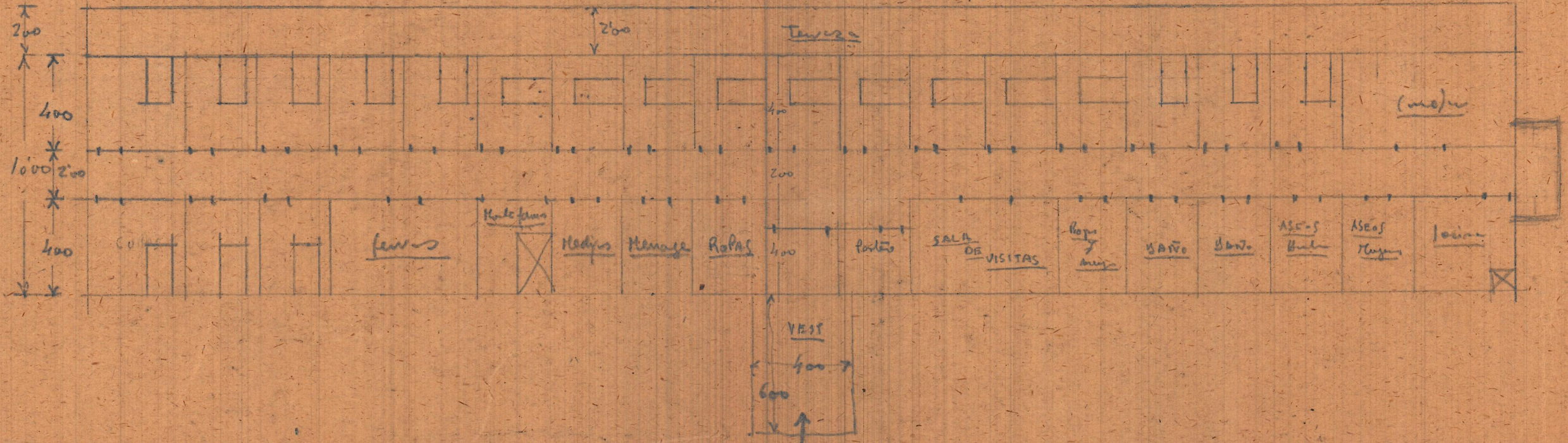
6 x 5 = 30 camas



③ Planta 1er p/o

$59 \times 10 = 590 \text{ m}^2$

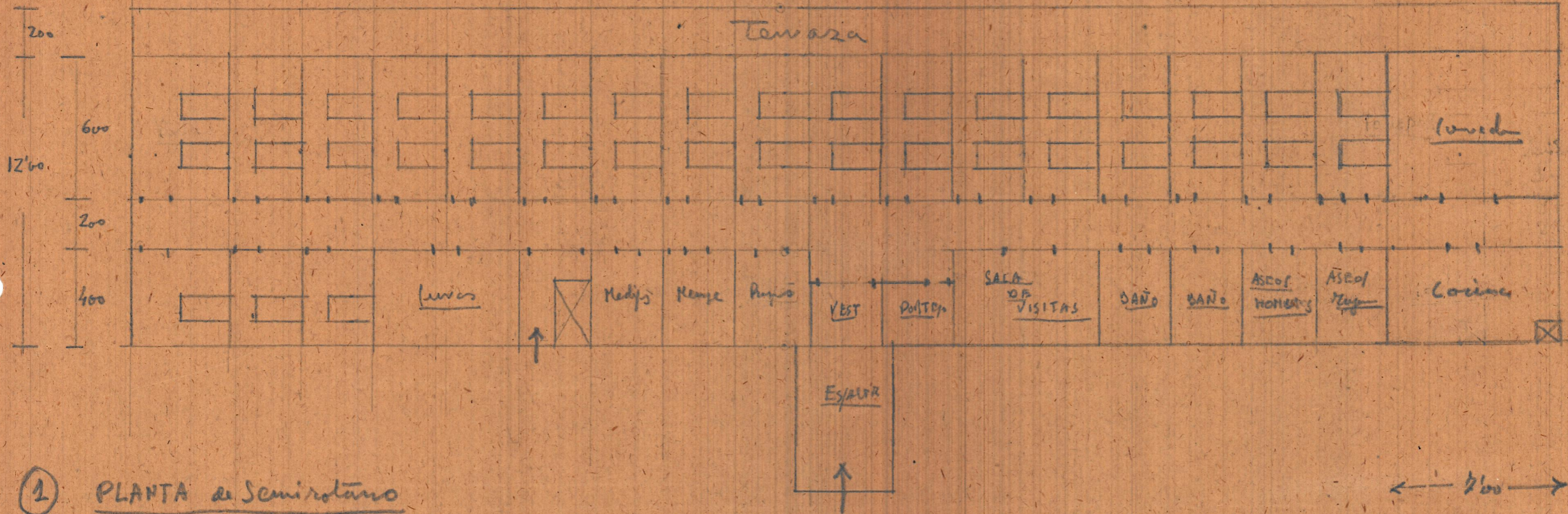
20 camas



① Planta 2º M/O

59 x 12 = 708 m²

37 Cámaras



① PLANTA de Semisótano

