

$40 \times 2 = 80$        $40 \times 2 = 80$   
 $300 \times 300 = 900$      $28 \times 2 = 560$   
 $390$              $15 \times 2 = 30$   
 $150$              $120$   
 $1220$             $790$

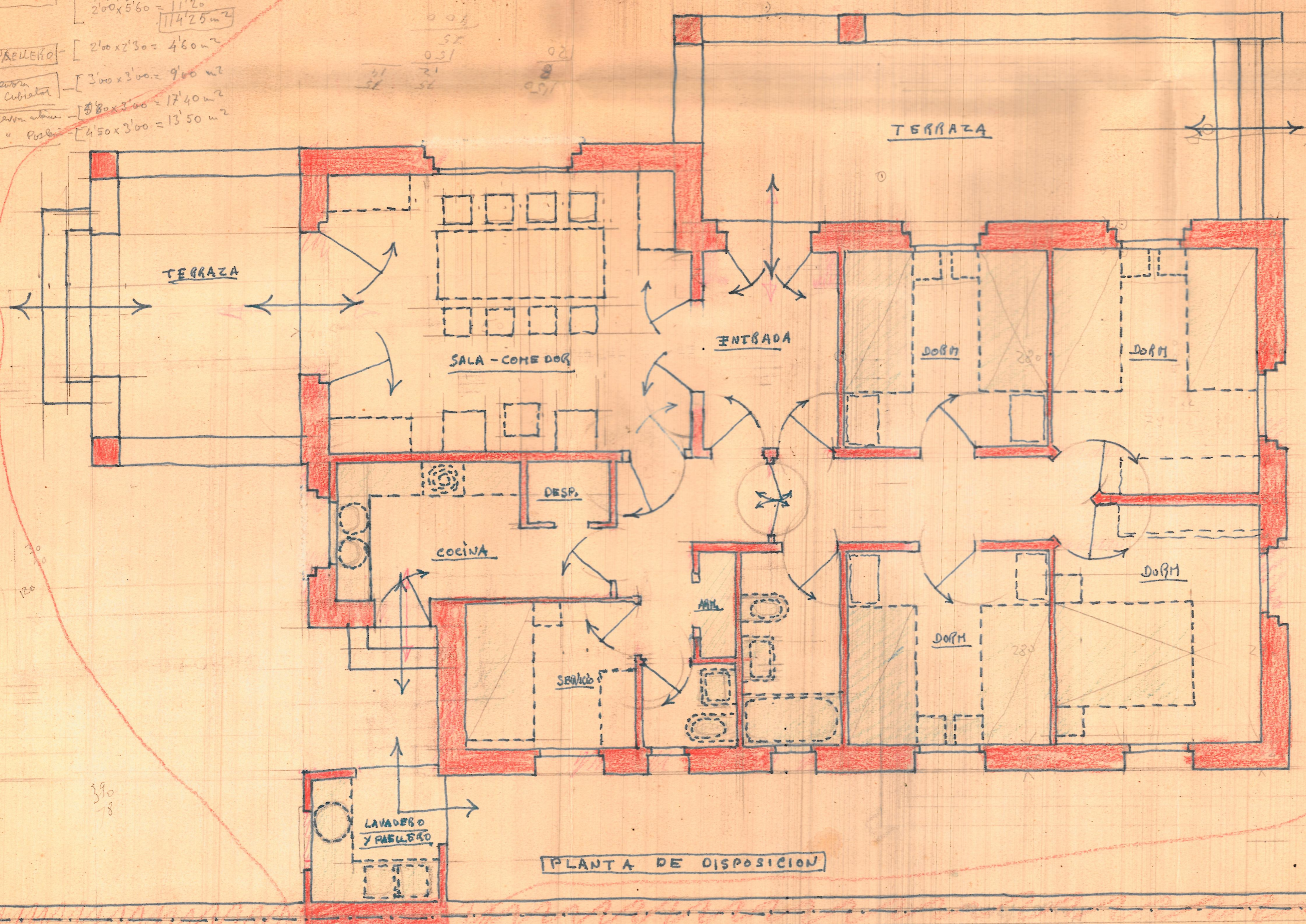
**Edificio** -  $12'20 \times 7'40 = 96'38$   
 $115 \times 5'80 = 667$   
 $2'00 \times 5'60 = 11'20$   
114'25 m<sup>2</sup>

**PAREDE** -  $2'00 \times 2'30 = 4'60 m^2$

**Terraza Cubierta** -  $3'00 \times 3'00 = 9'00 m^2$

**Terraza abierta** -  $5'80 \times 3'00 = 17'40 m^2$

**Poste** -  $4'50 \times 3'00 = 13'50 m^2$



0.01  
 52  
 0.31  
 21  
 52  
 0.31  
 8  
 0.31

30  
120

390  
-8

PLANTA DE DISPOSICION