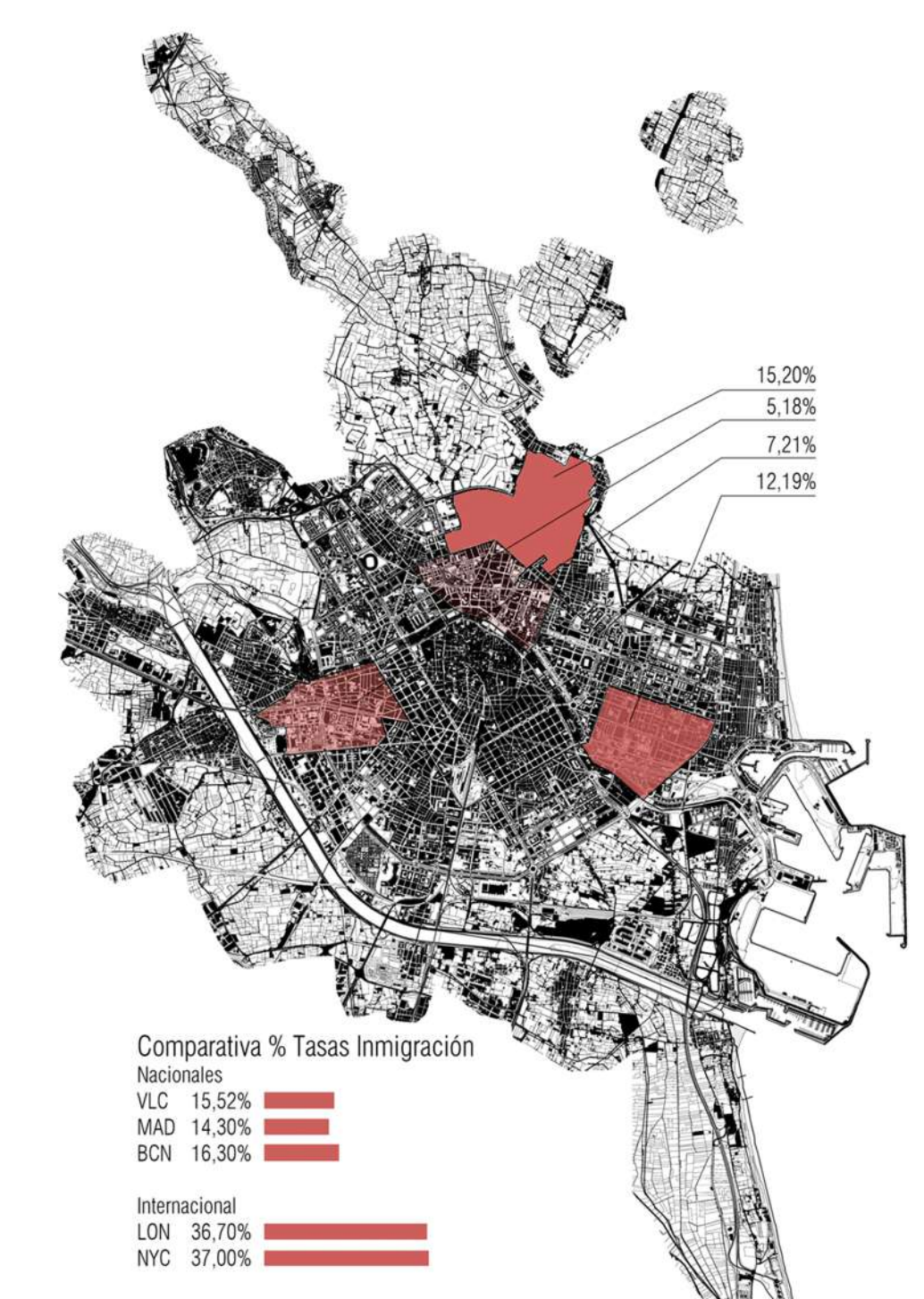


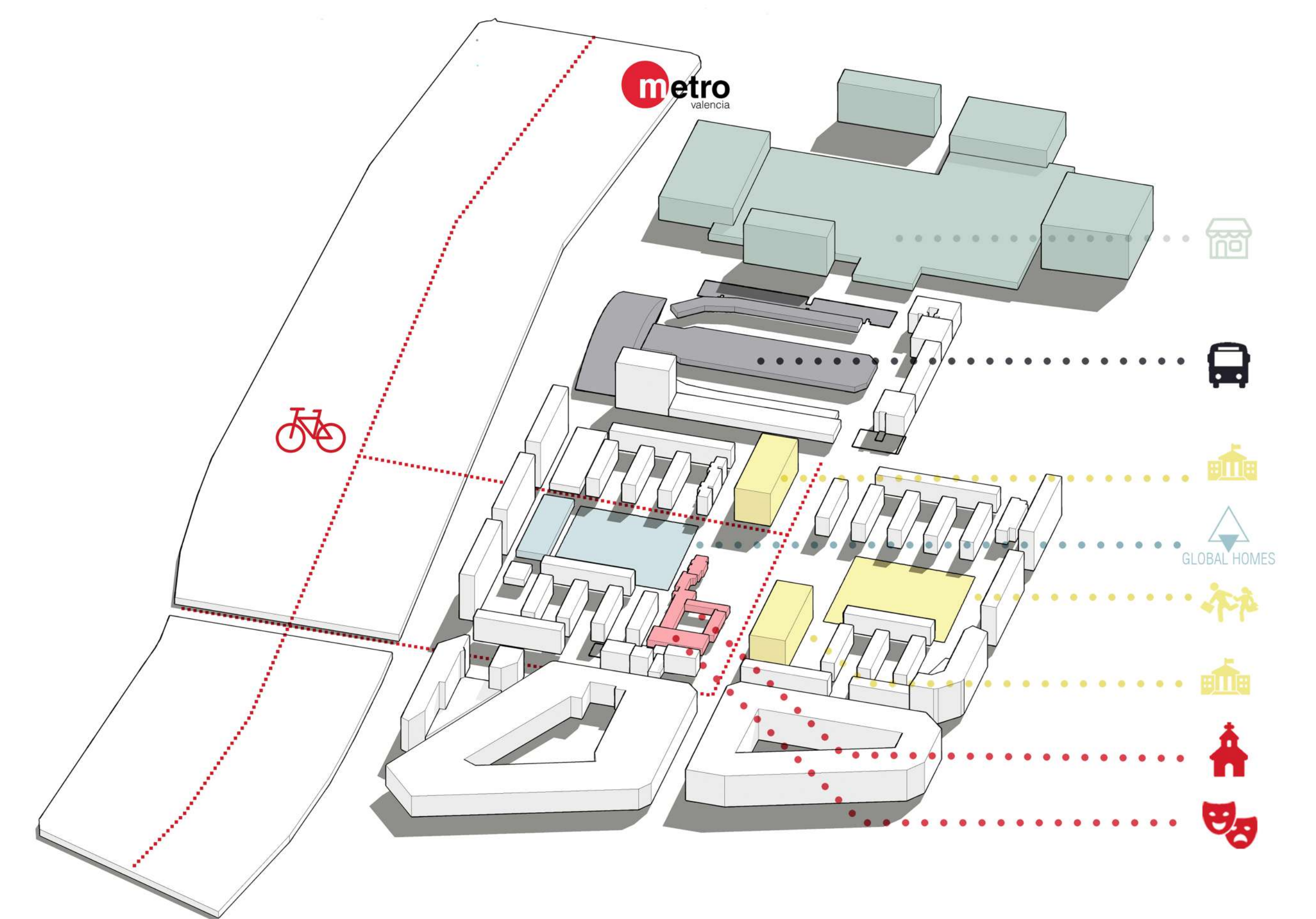
Distritos con un porcentaje mayor de inmigración extranjera



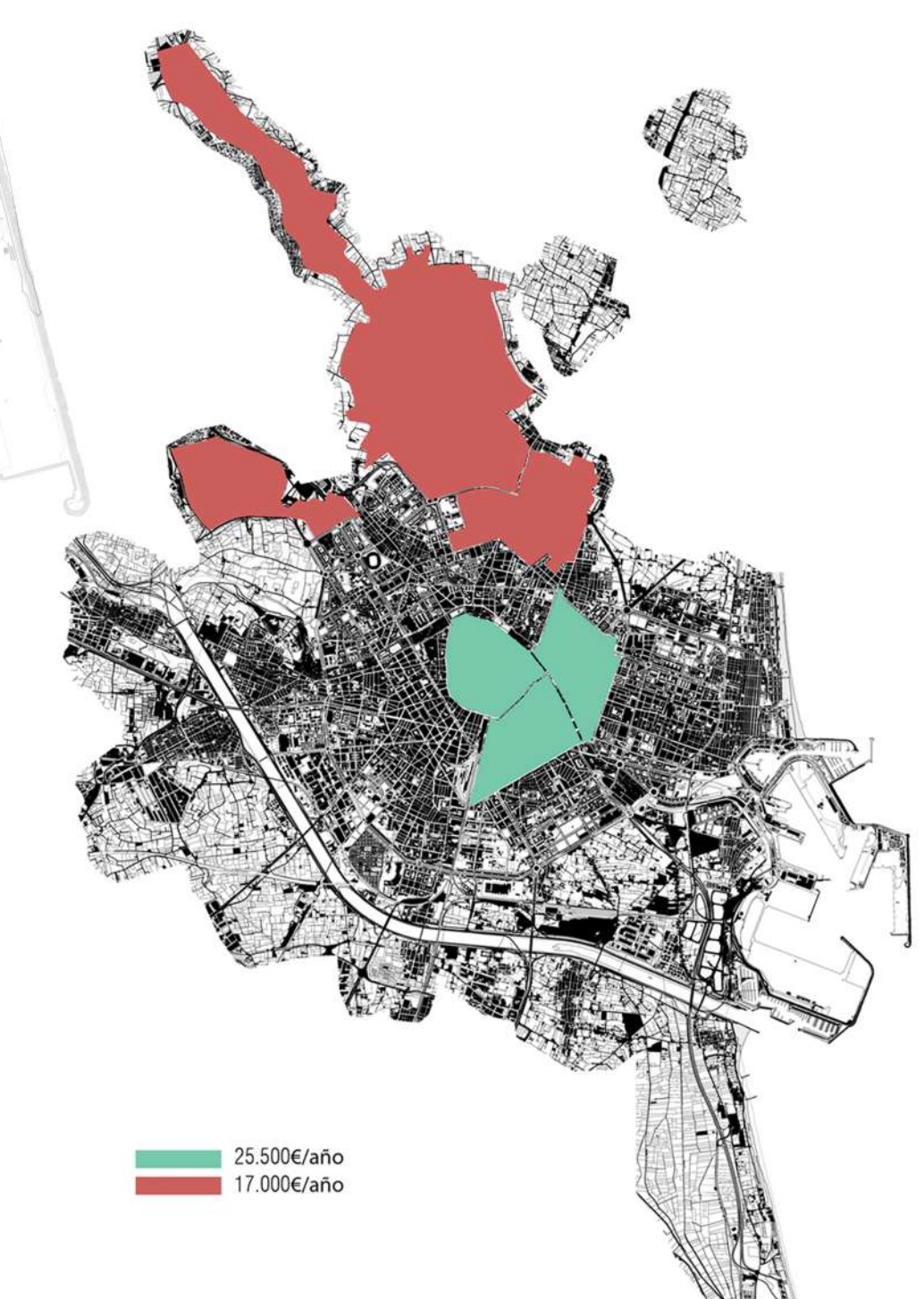
Movimientos migratorios intraurbanos



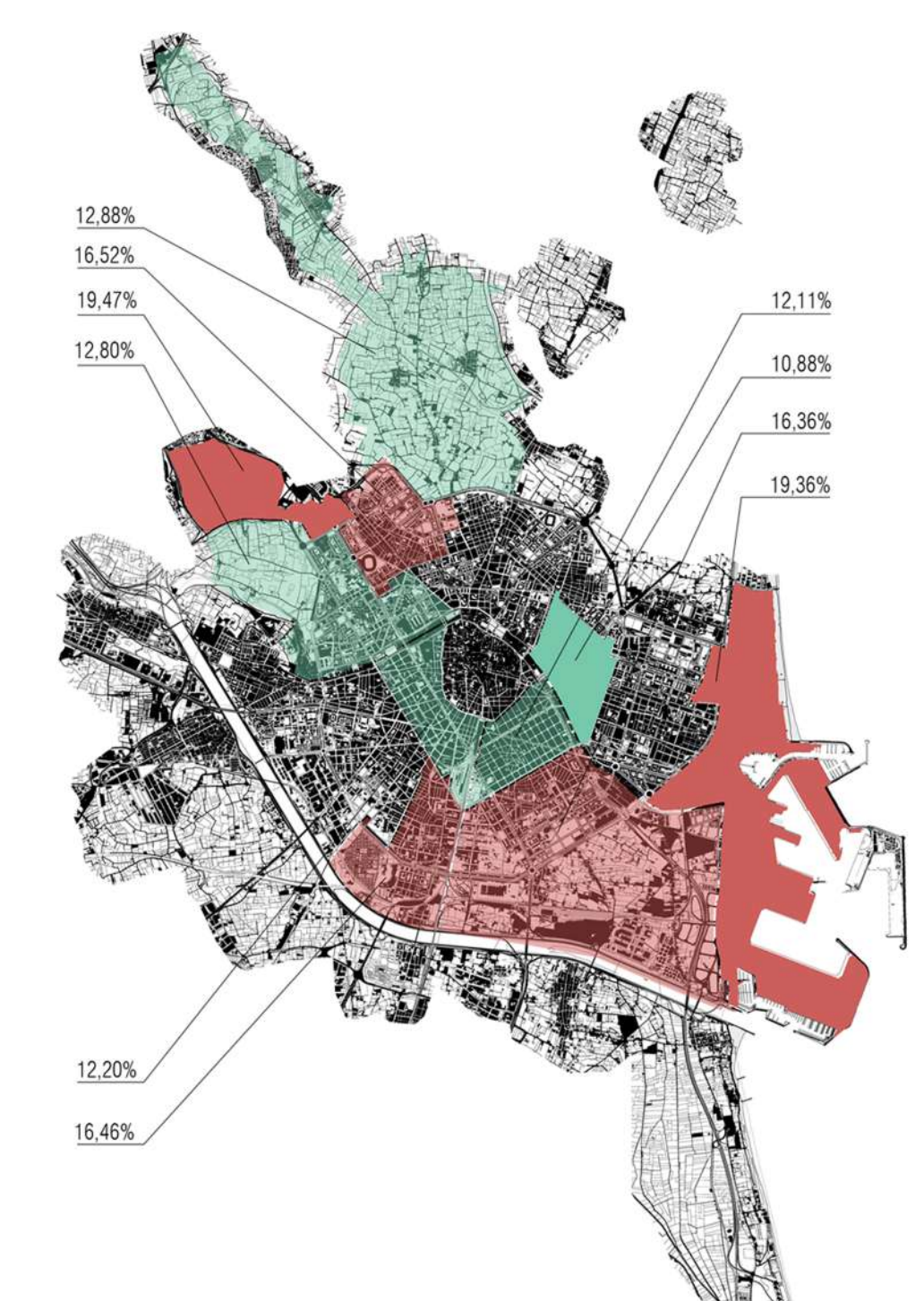
AXONOMETRÍA ANÁLISIS DE LUGAR



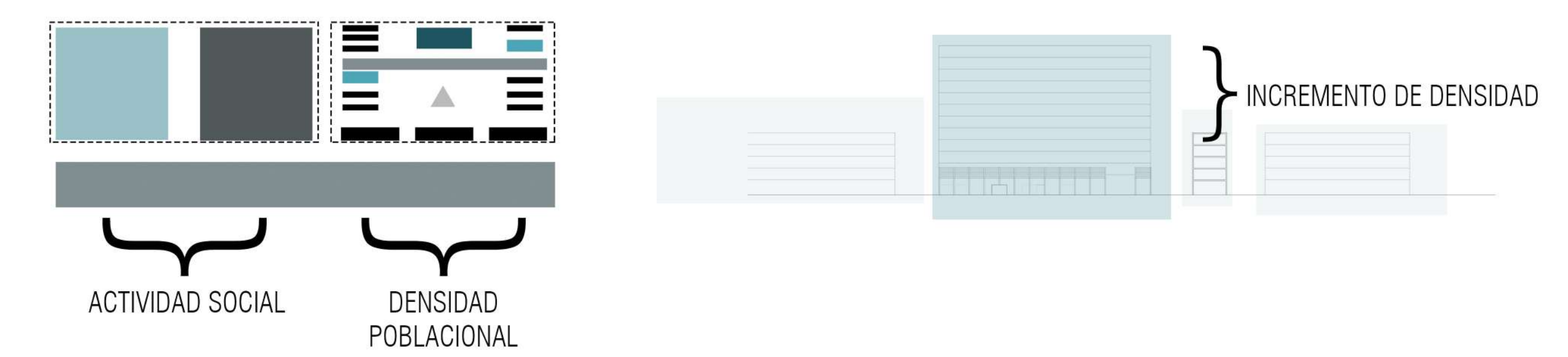
Renta per cápita por distritos

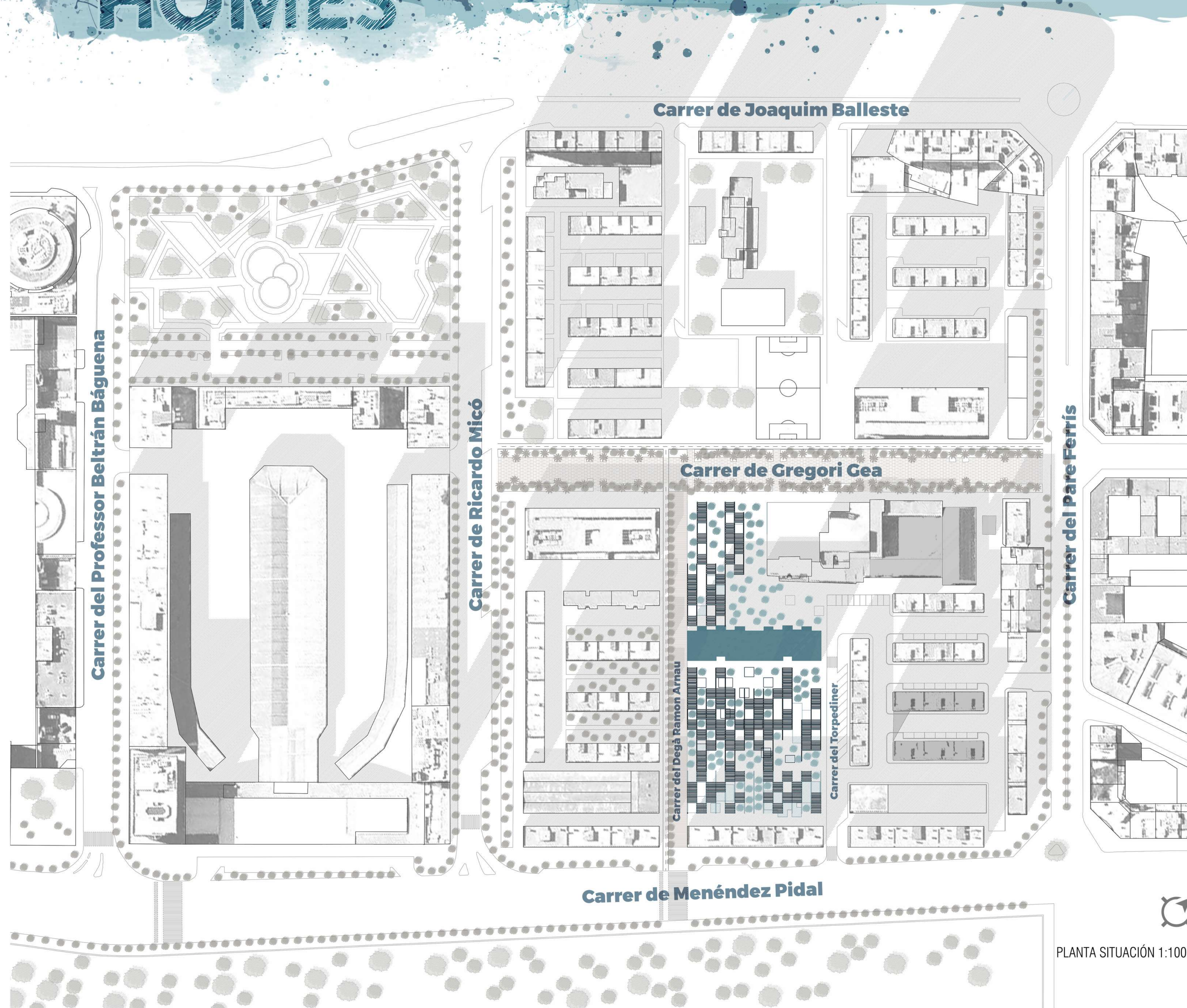


Porcentaje de parados por distritos



ESQUEMAS DEL BARRIO





PLANTA SITUACIÓN 1:1000

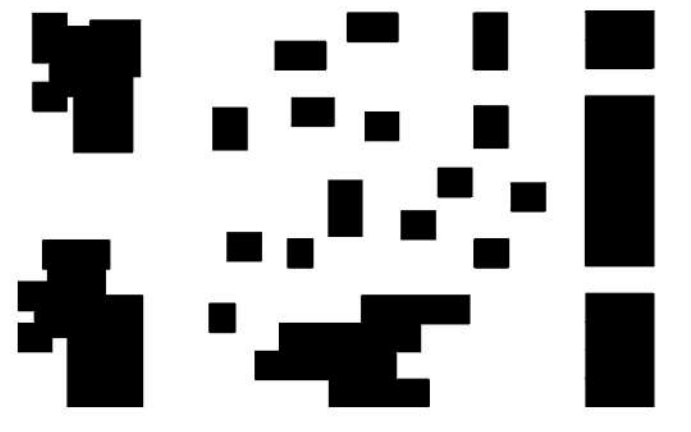
FUNCIONAMIENTO DE GLOBAL HOMES



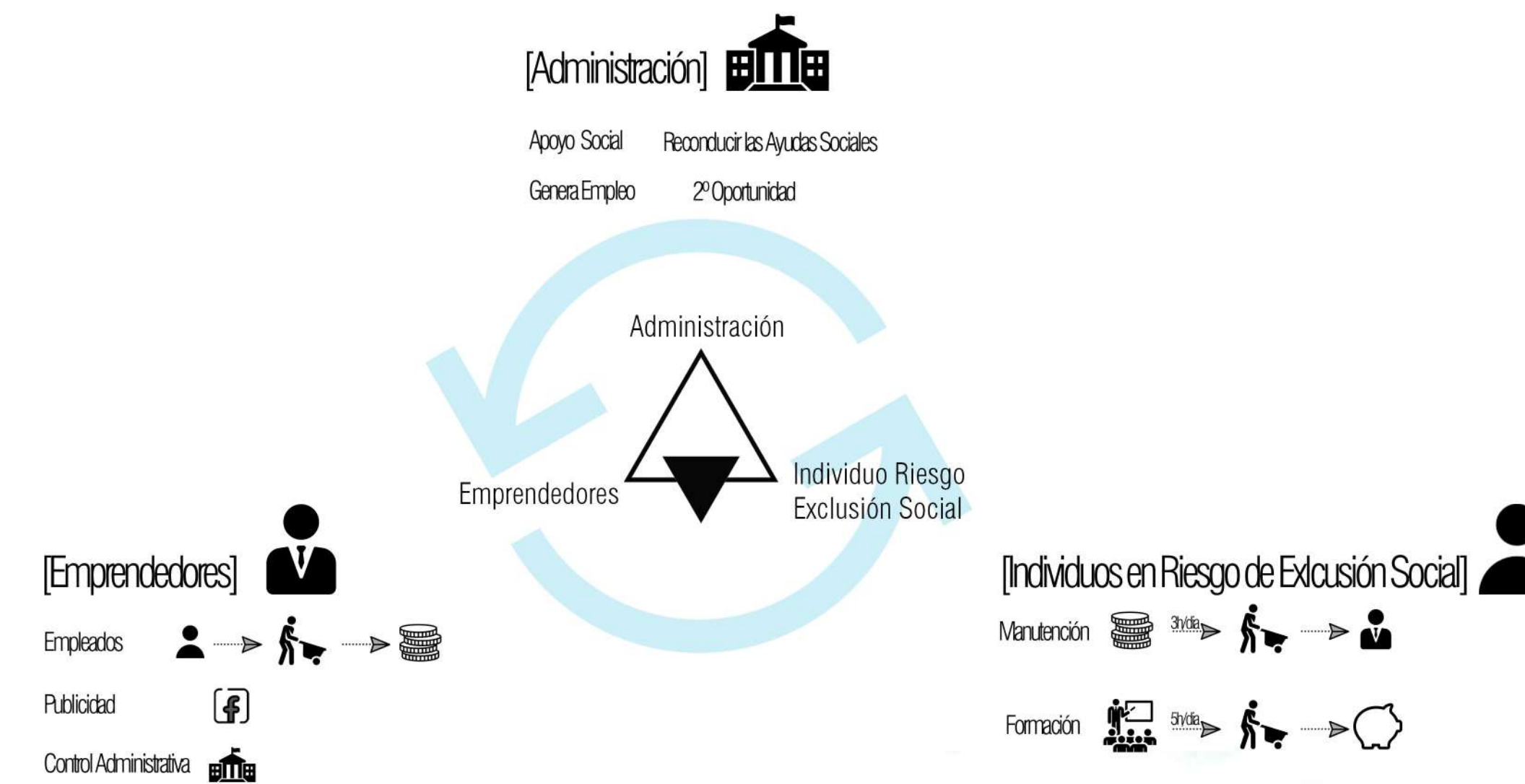
CONTINUACIÓN DE LA ESTRUCTURA PORTICADA [VIVIENDA - TRABAJO]

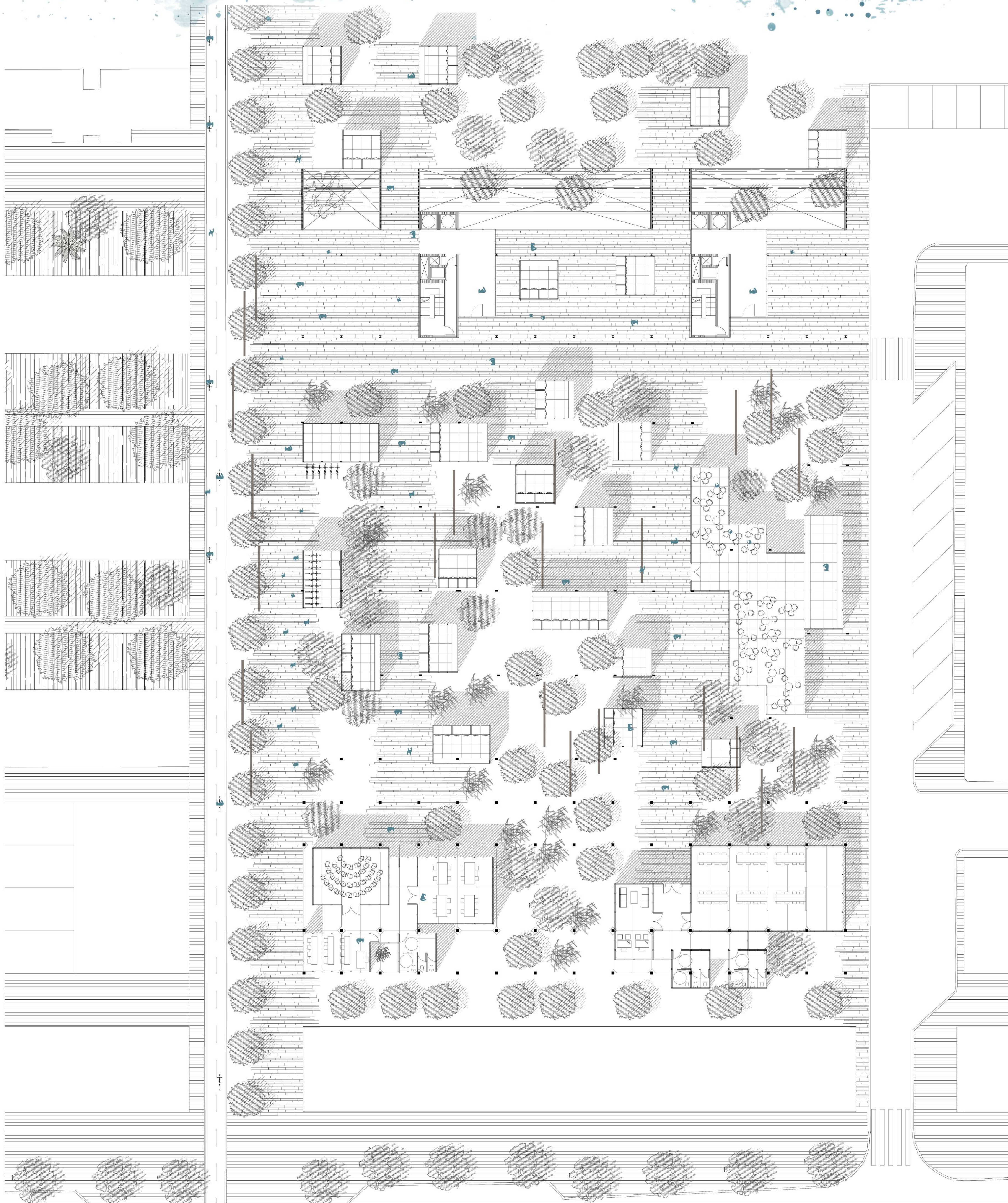


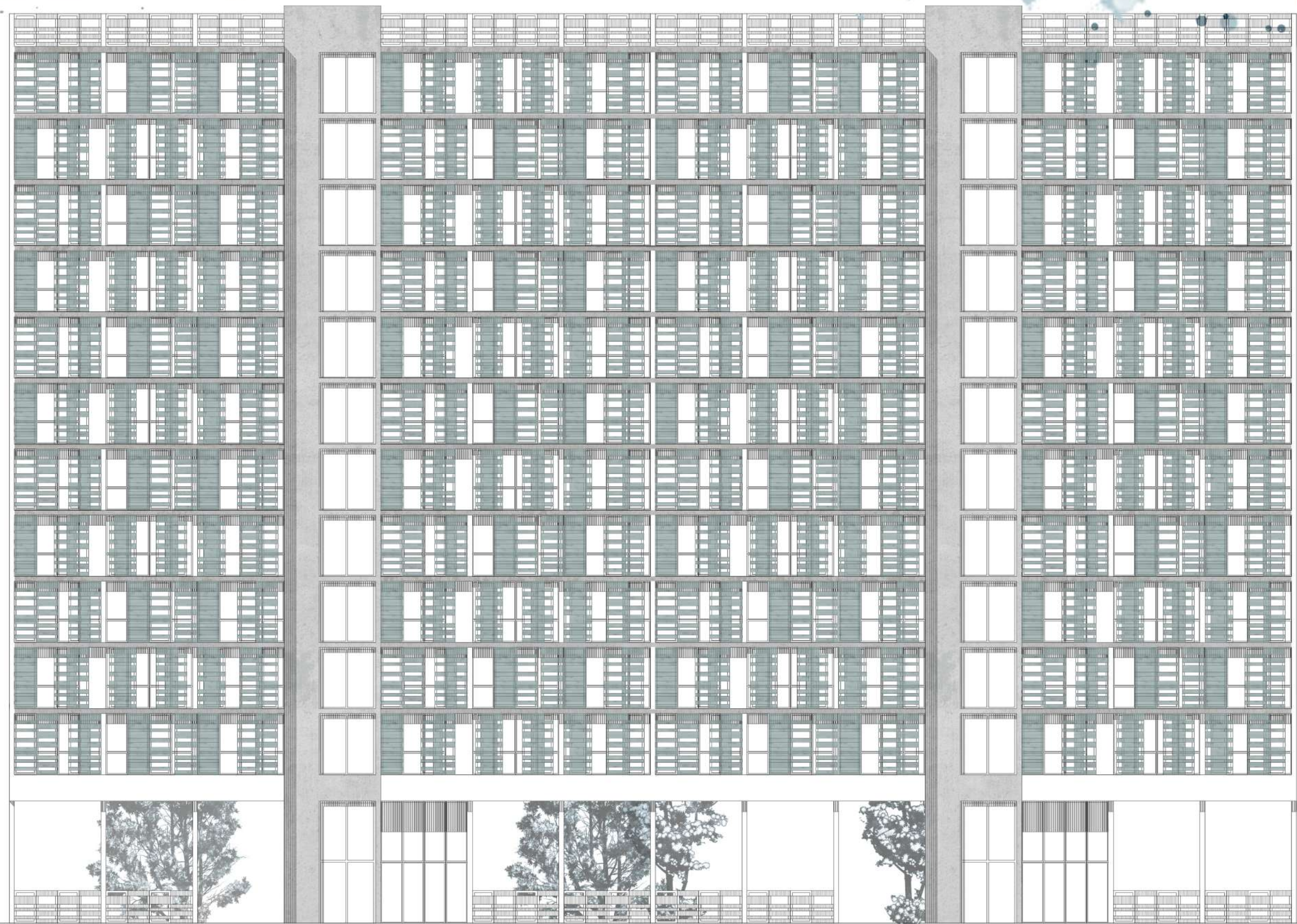
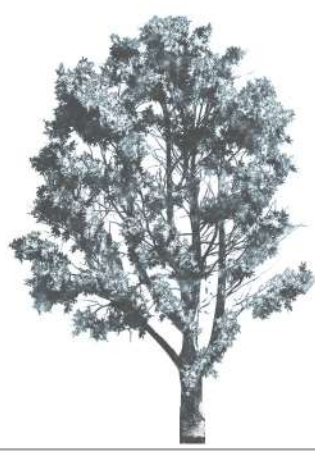
CONSTRUCCIÓN MODULAR [ADAPTACIÓN DE LOS USOS]



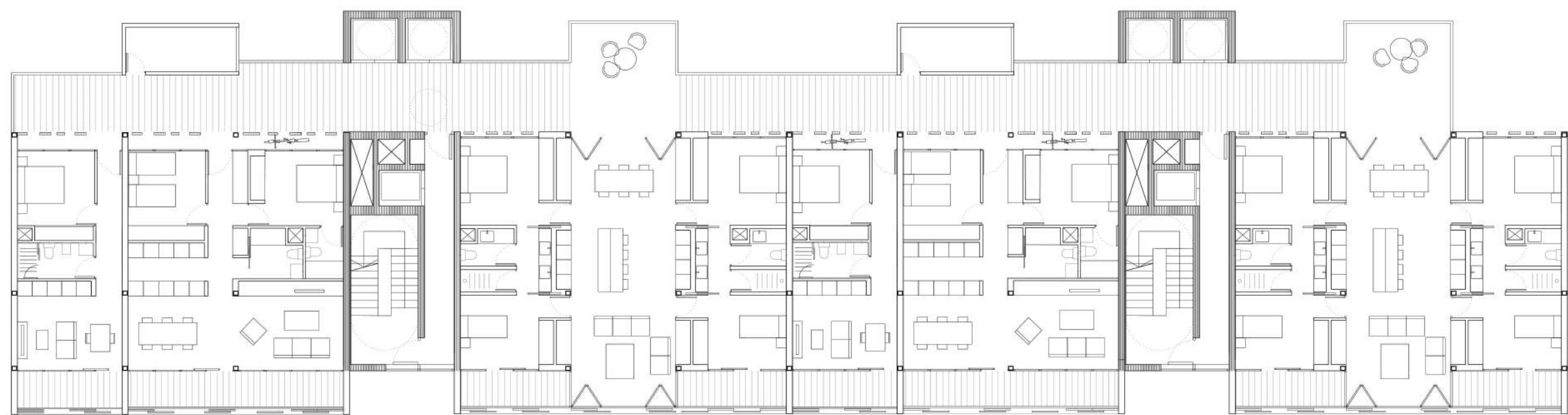
SECCIÓN PORTICOS-MODULOS Y EDIFICIO



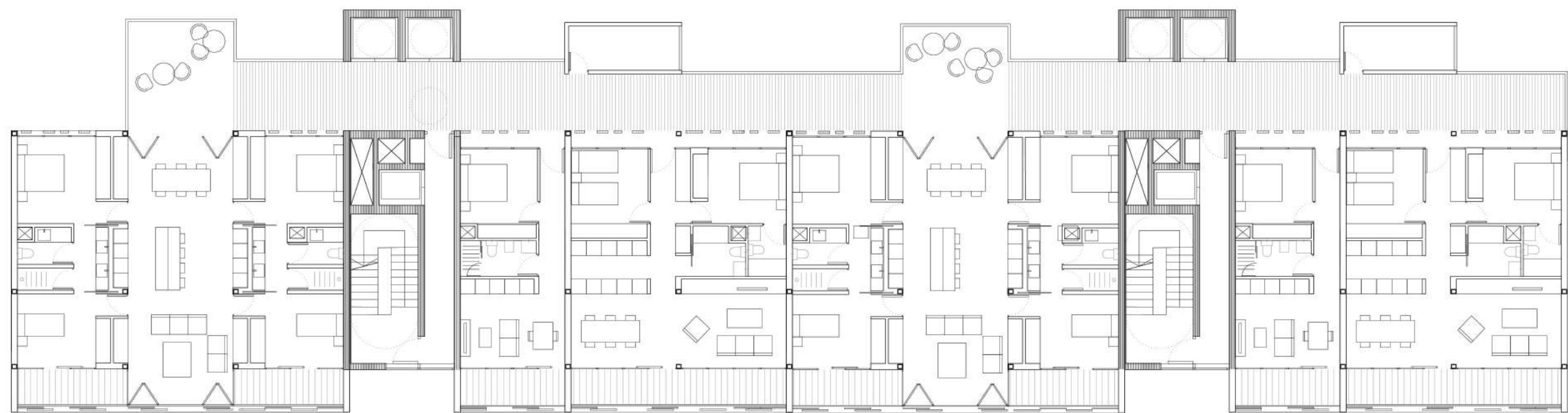




ALZADO SUR 1:200



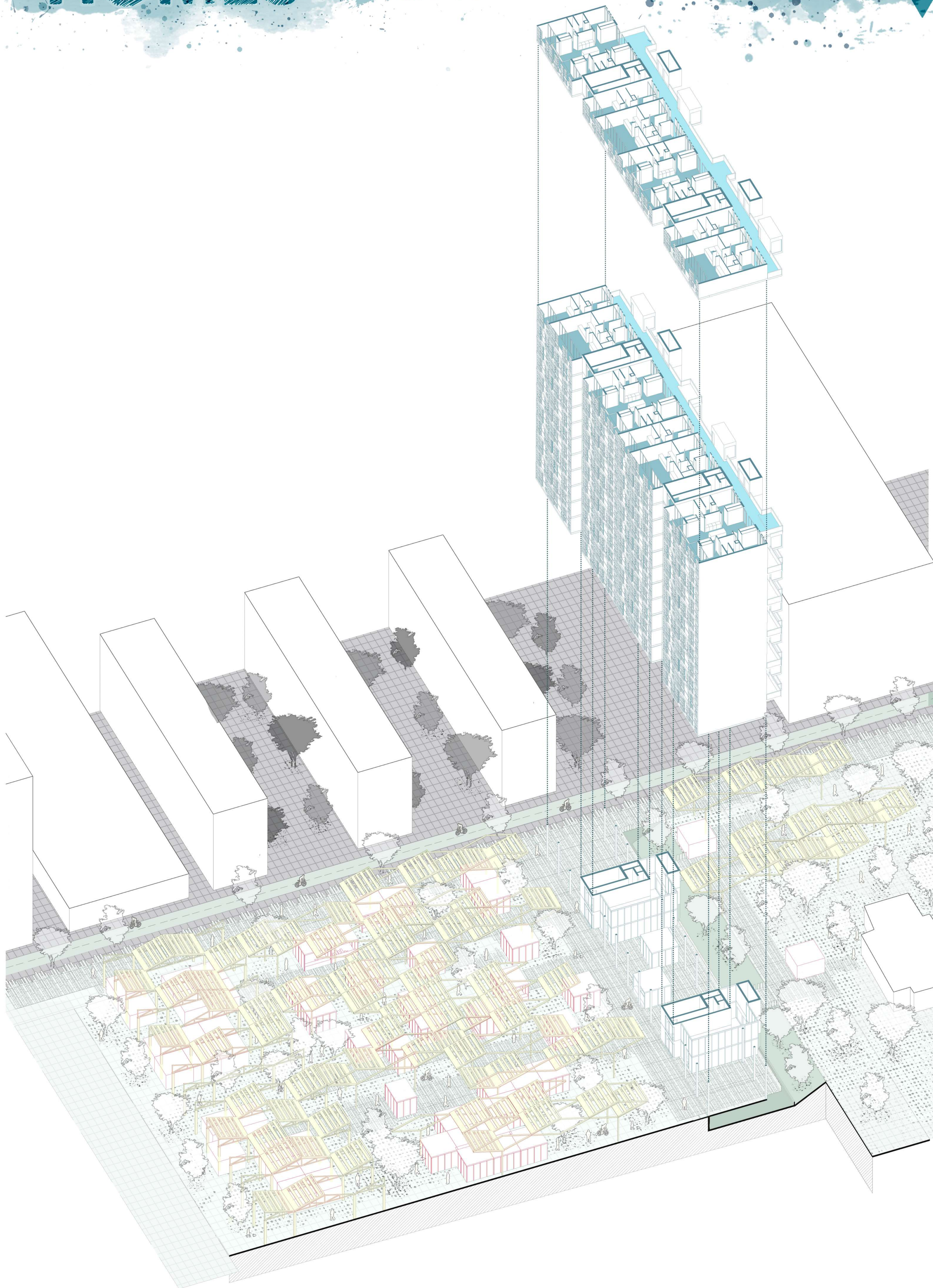
PLANTA TIPO NIVELES IMPARES 1:200

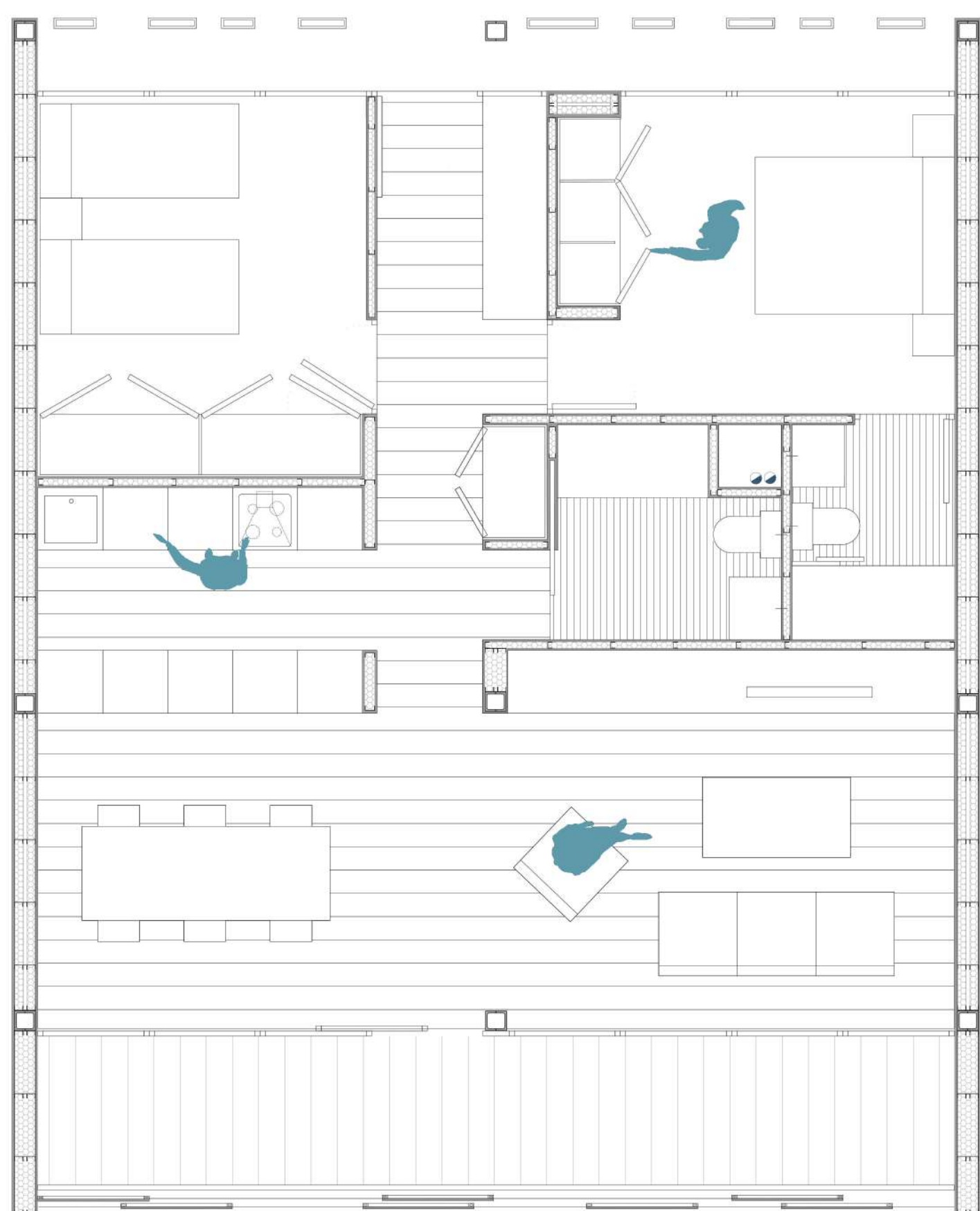


PLANTA TIPO NIVELES PARES 1:200

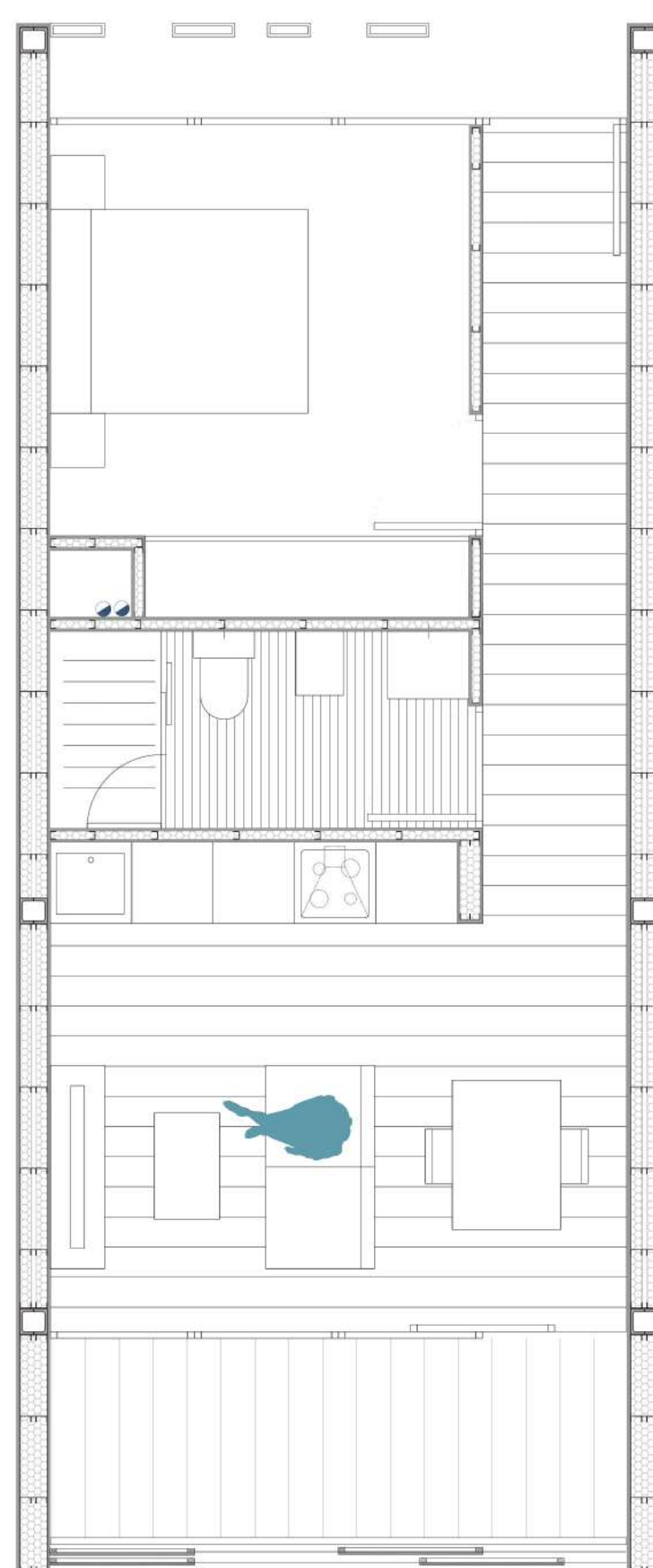


ALZADO NORTE 1:200



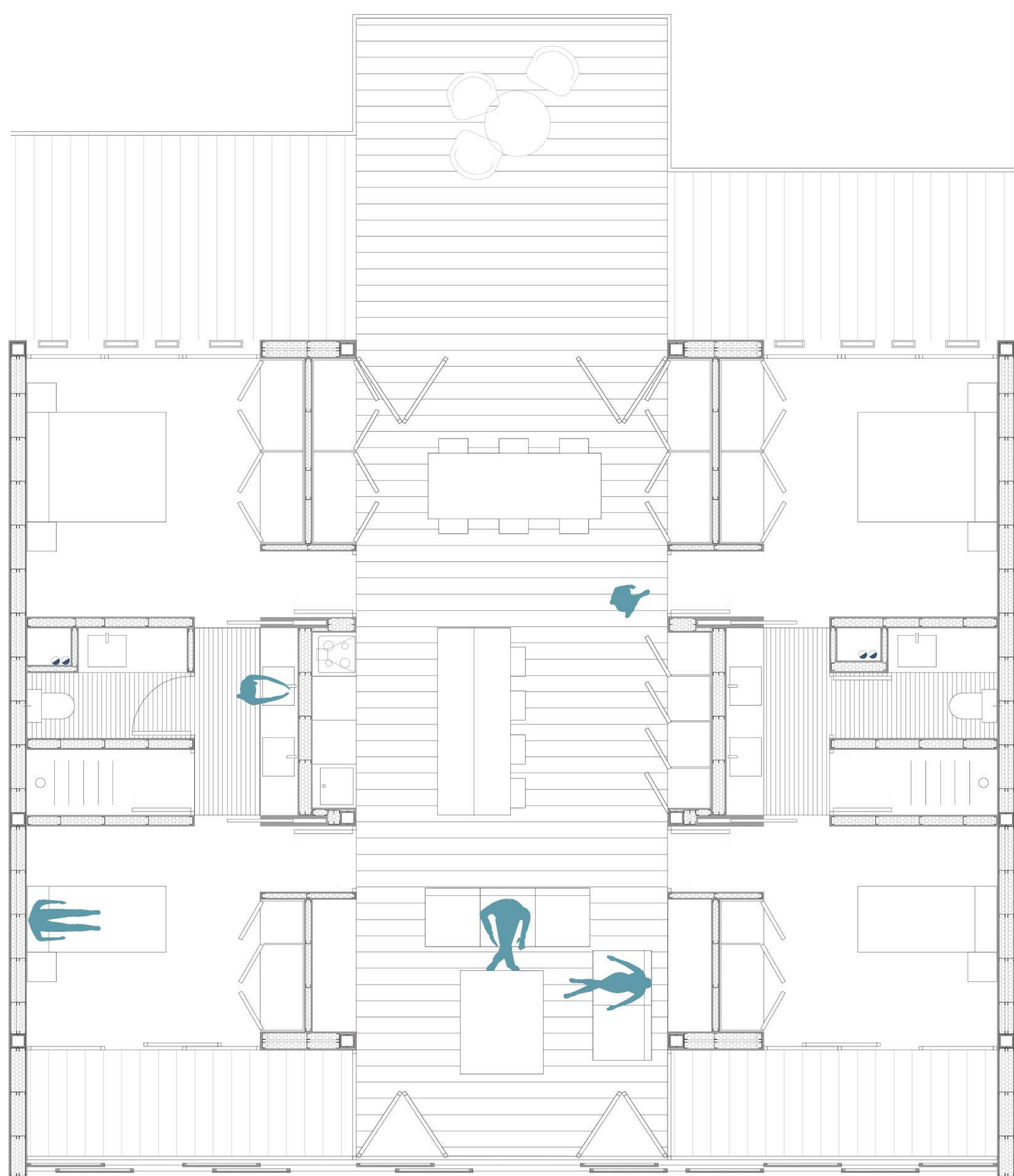


 Tipo A

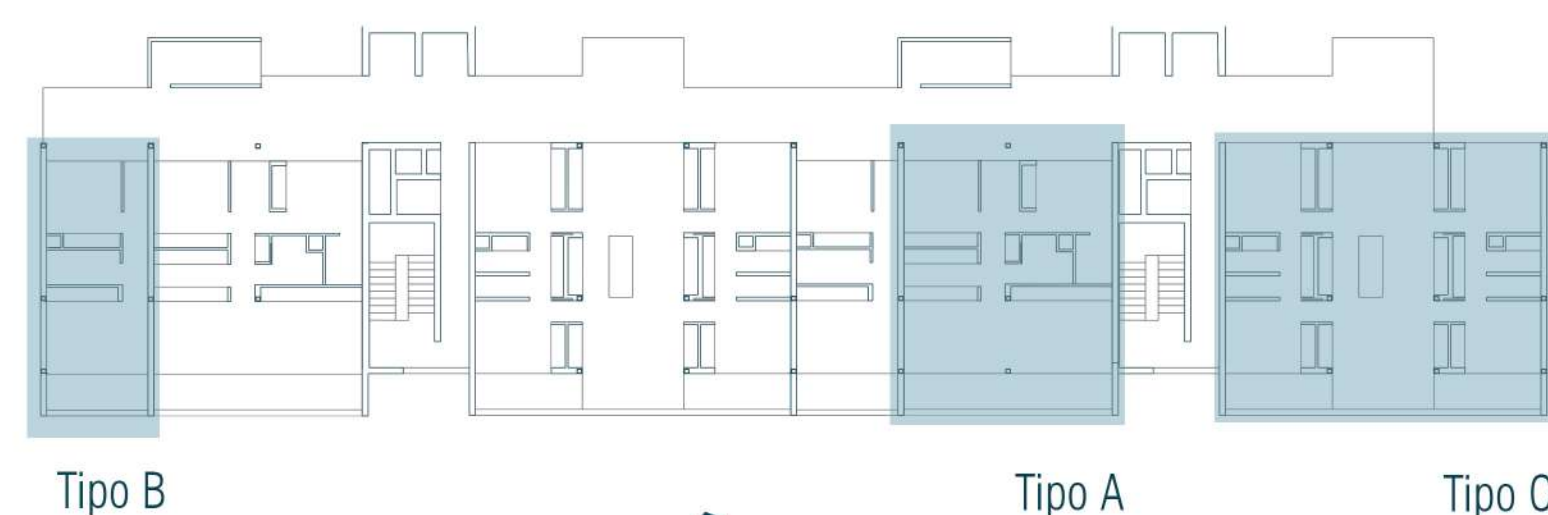


 Tipo B

Tipologías Viviendas
Escala 1:50



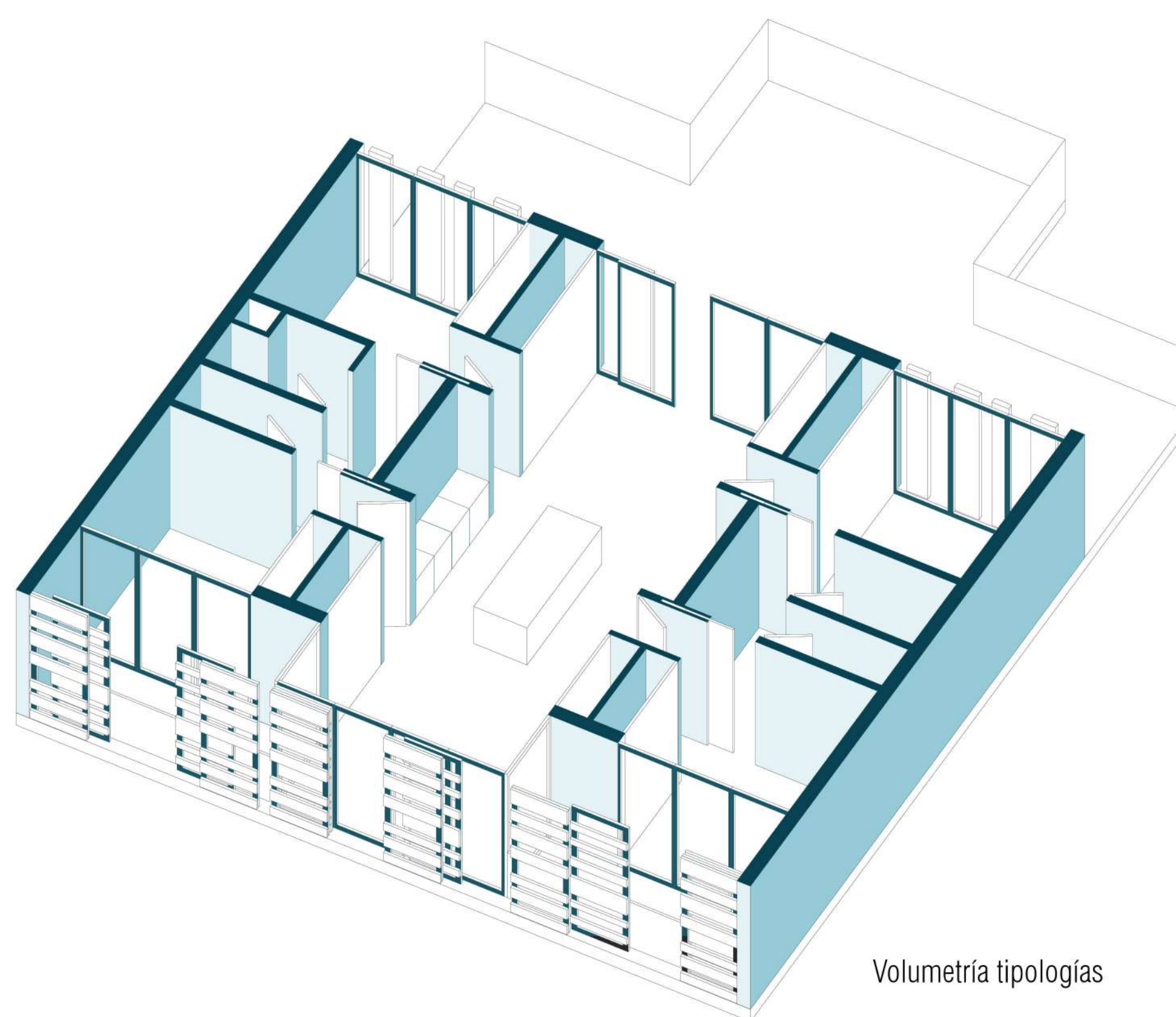
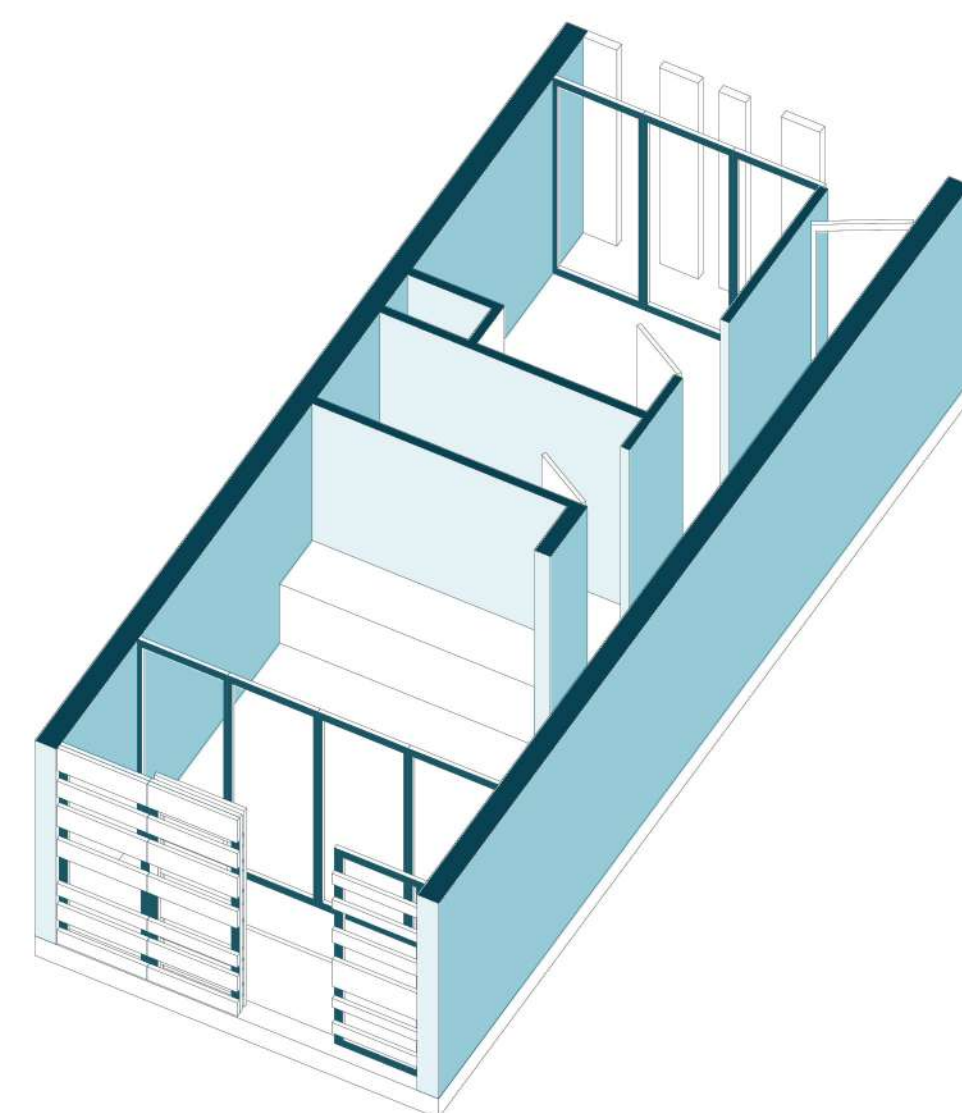
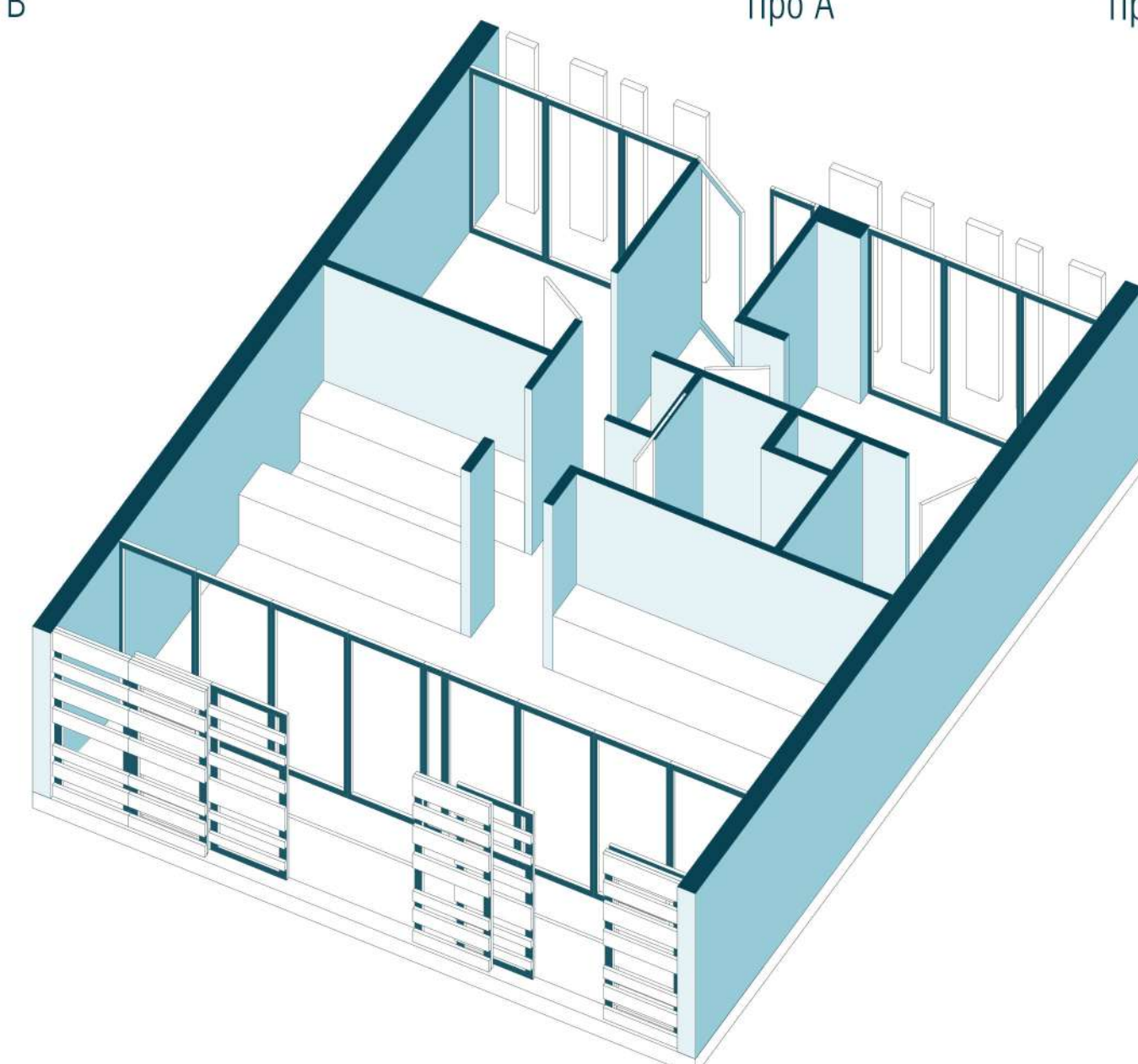
 Tipo C



Tipo B

Tipo A

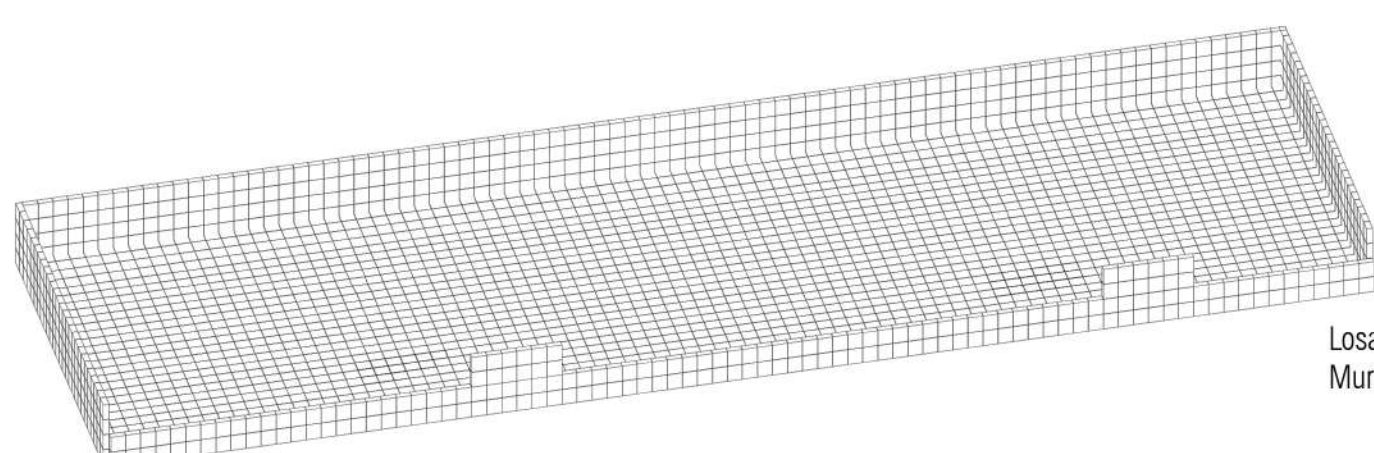
Tipo C



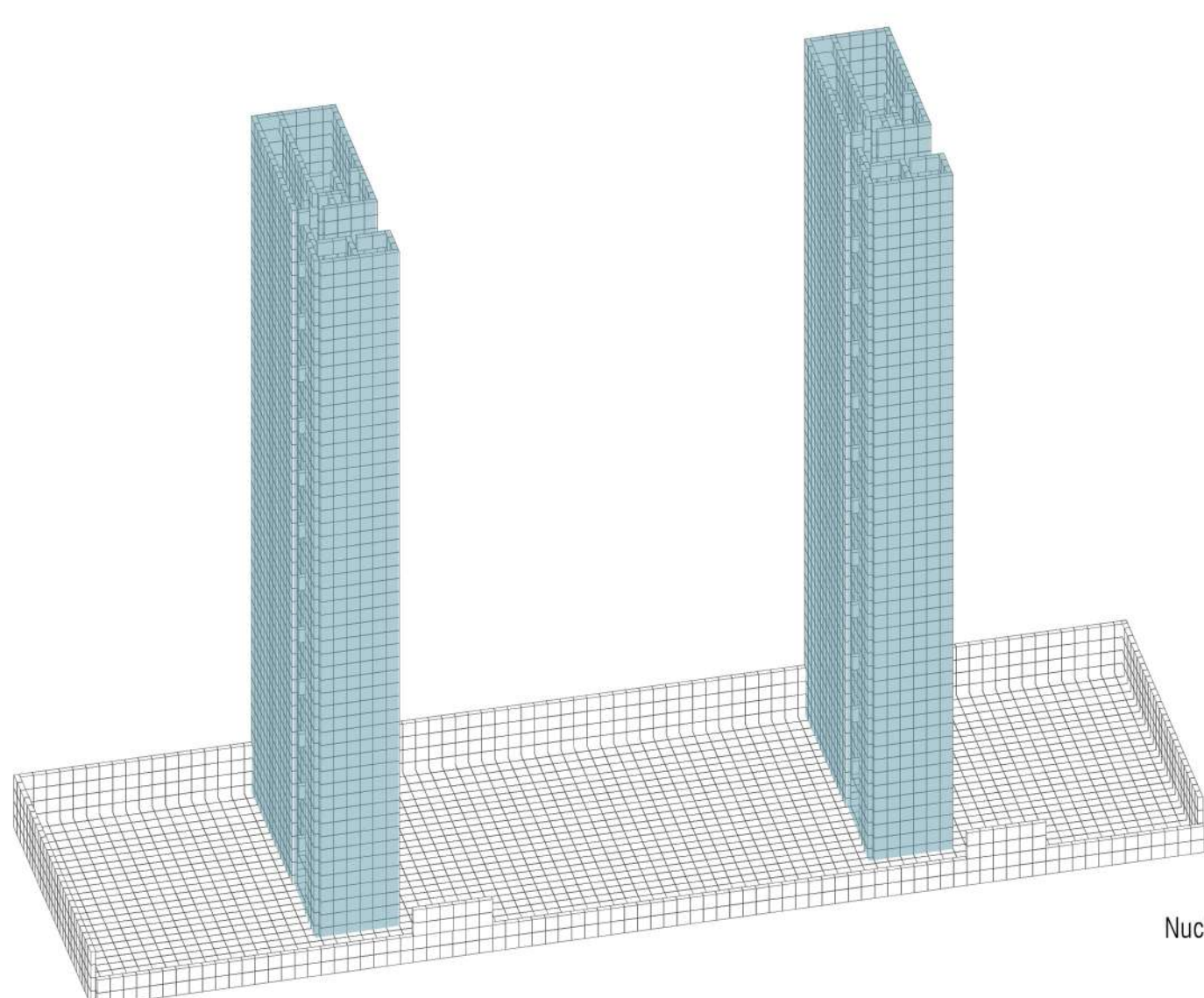
Volumetría tipologías

ESQUEMA ESTRUCTURAL

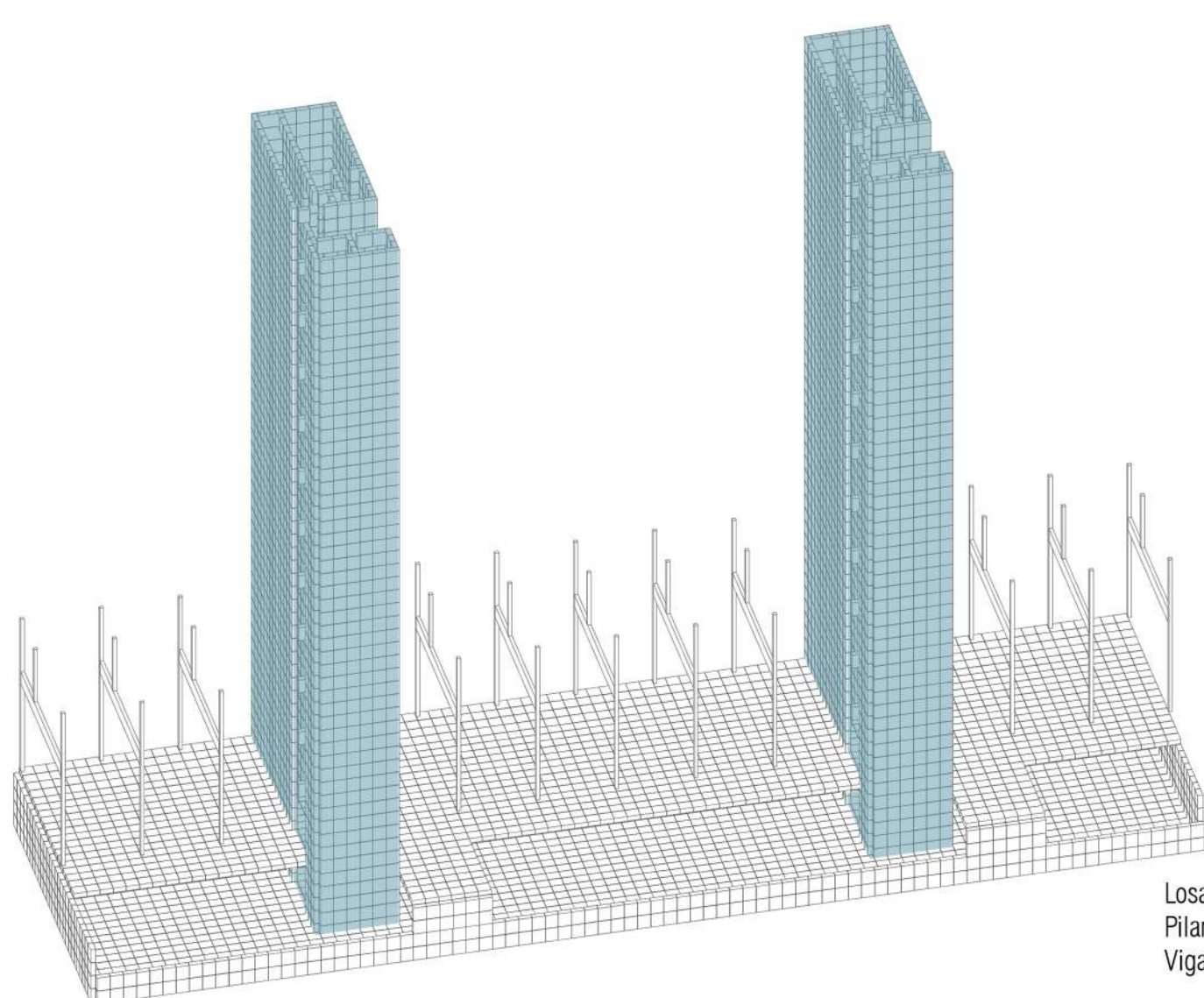
MODELADO MEDIANTE ELEMENTOS FINITOS



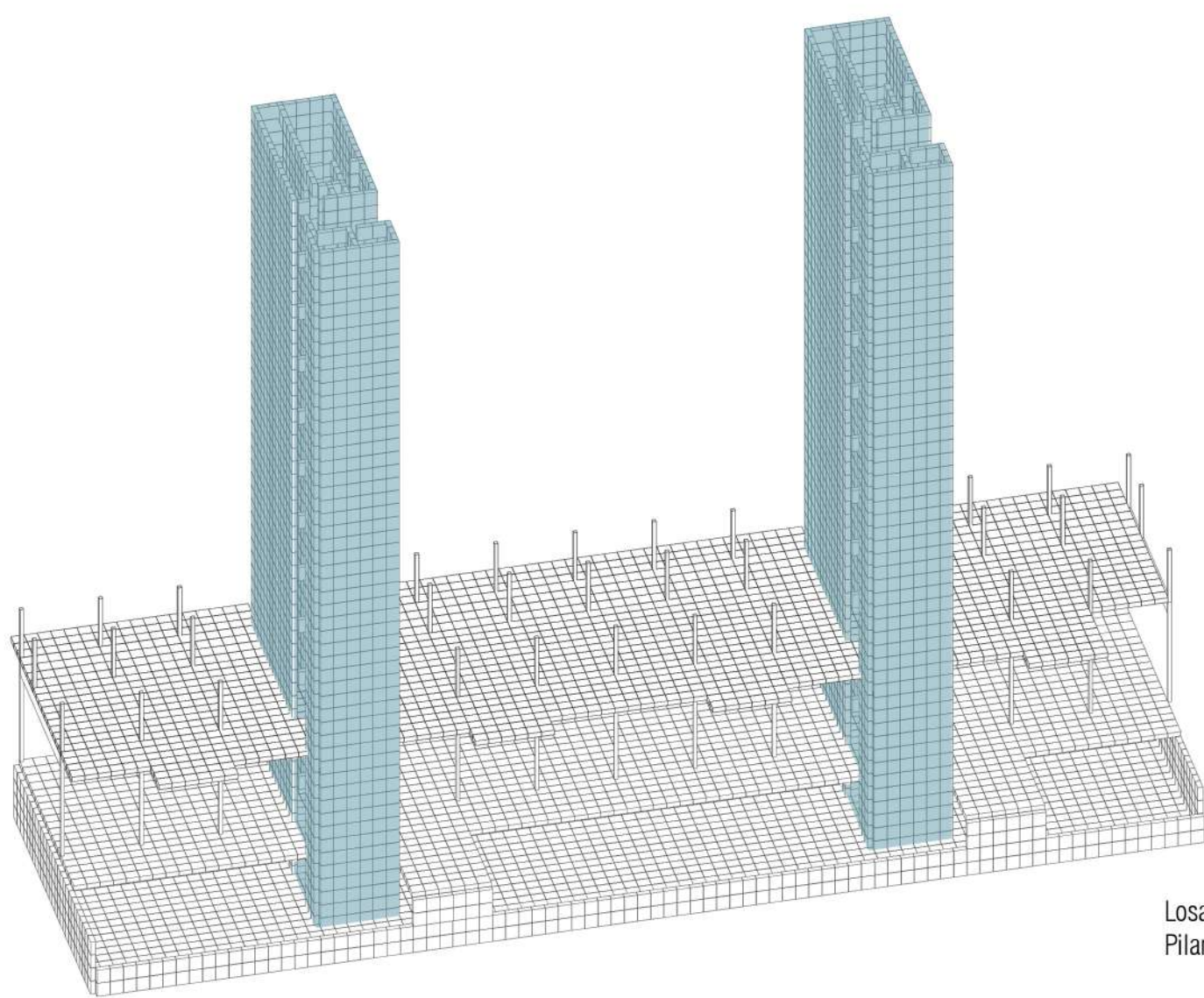
Losa de cimentación [110 cm]
Muros de sótano [30 cm]



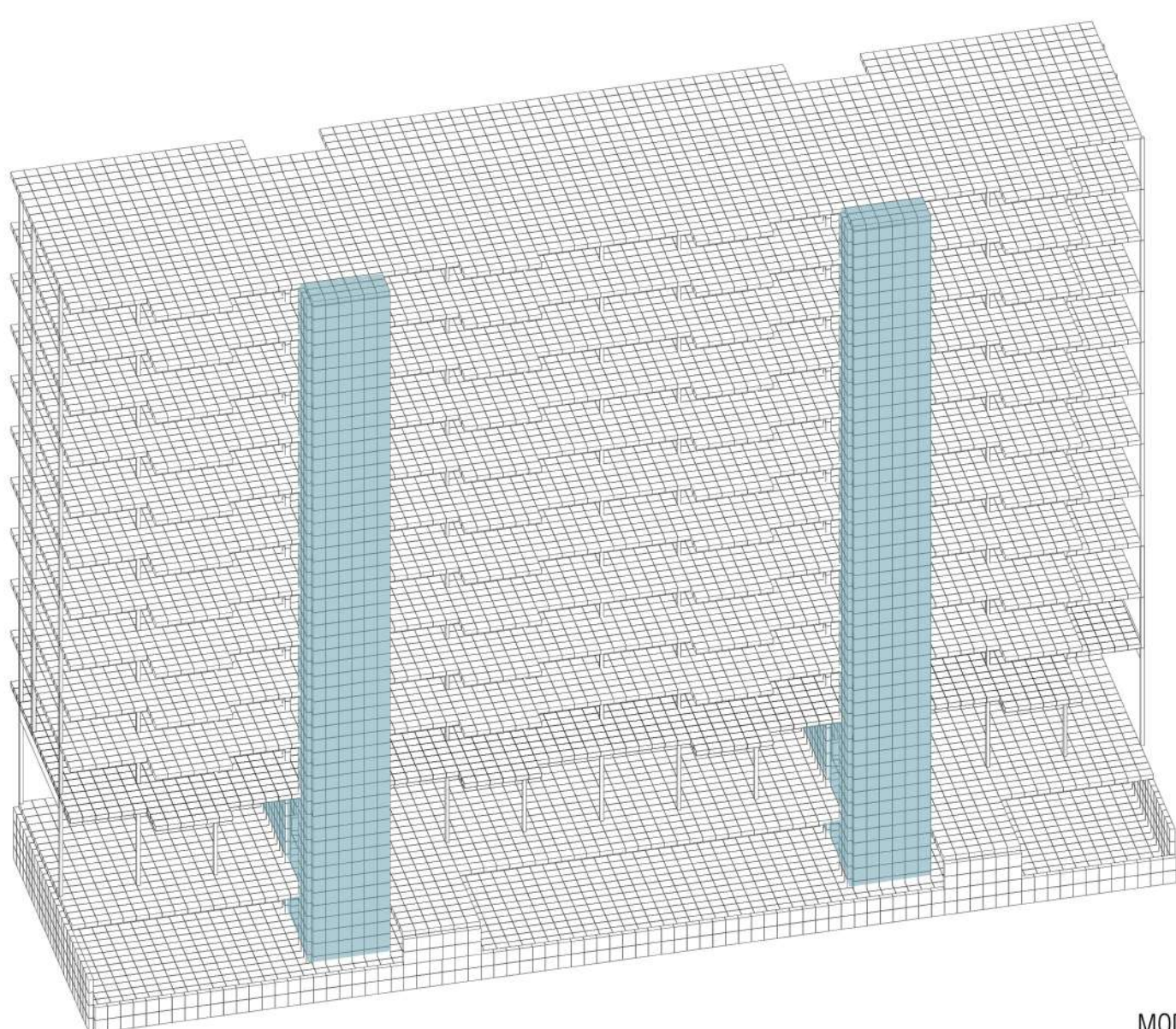
Nucleos de comunicación [25 cm]



Losa de planta baja [20cm]
Pilares metálicos HEB 240
Viga de hormigón postesado [80 cm]



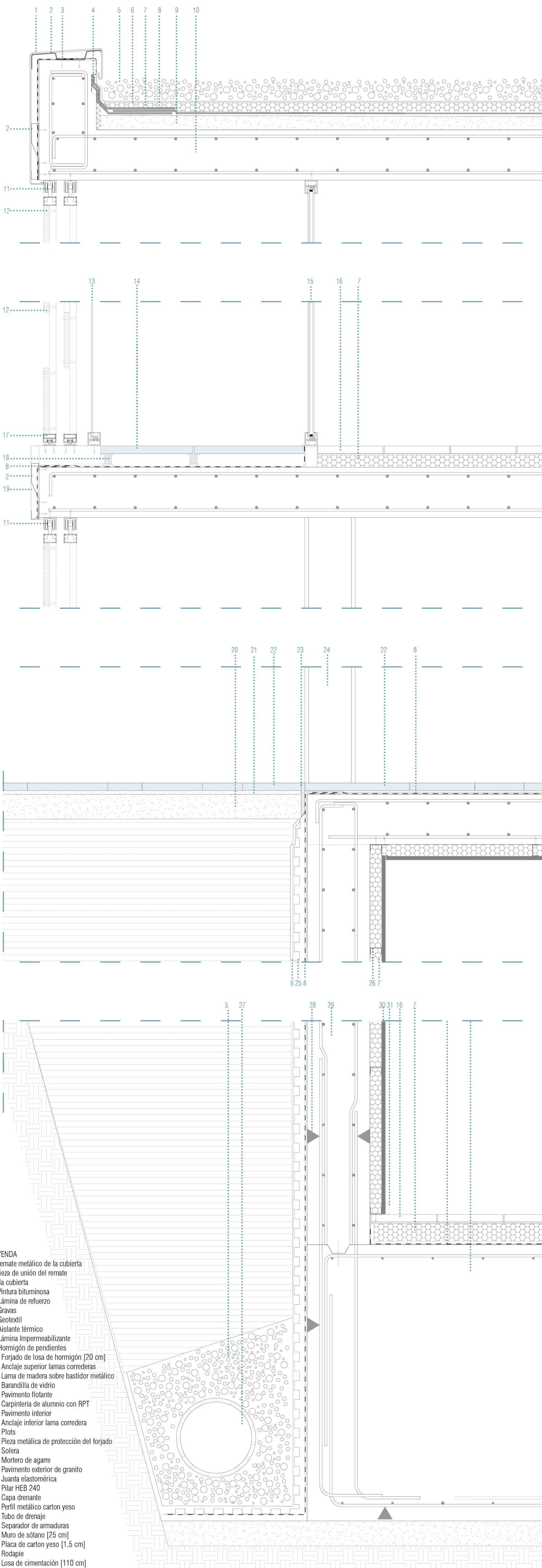
Losa de forjado [20cm]
Pilares metálicos 2UPN 140

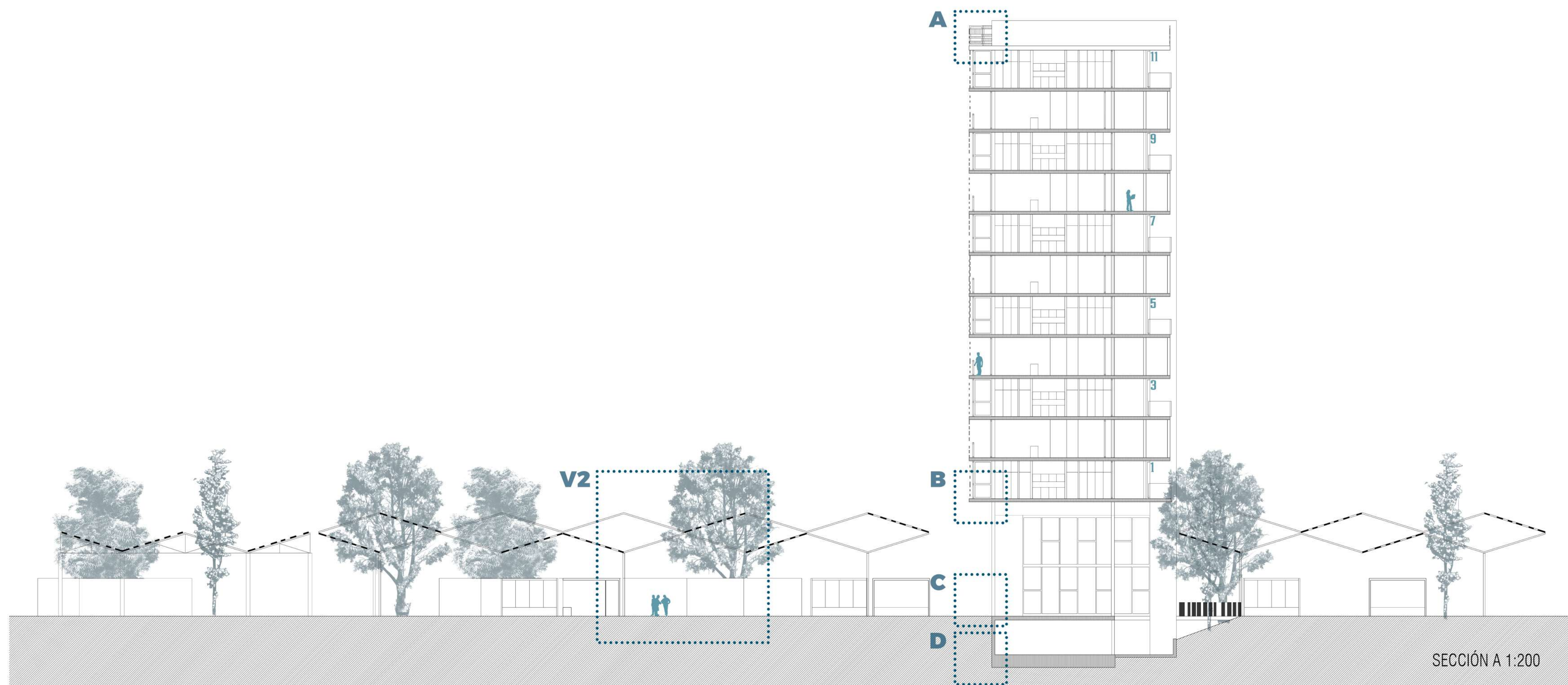


MODELO COMPLETO DEL EDIFICIO

SECCIÓN CONSTRUCTIVA

ESCALA 1:10





V2

A

B

C

D

11

9

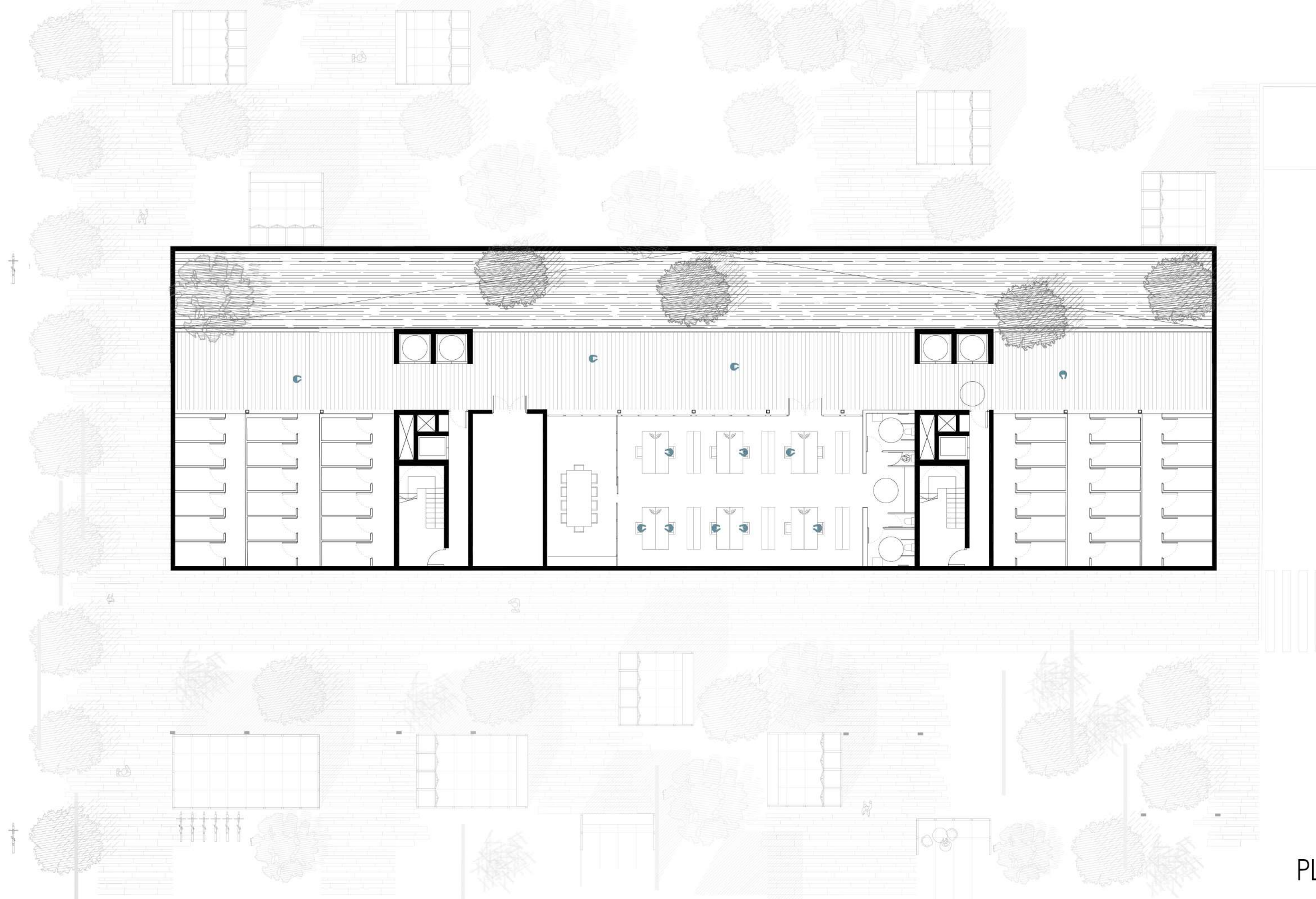
7

5

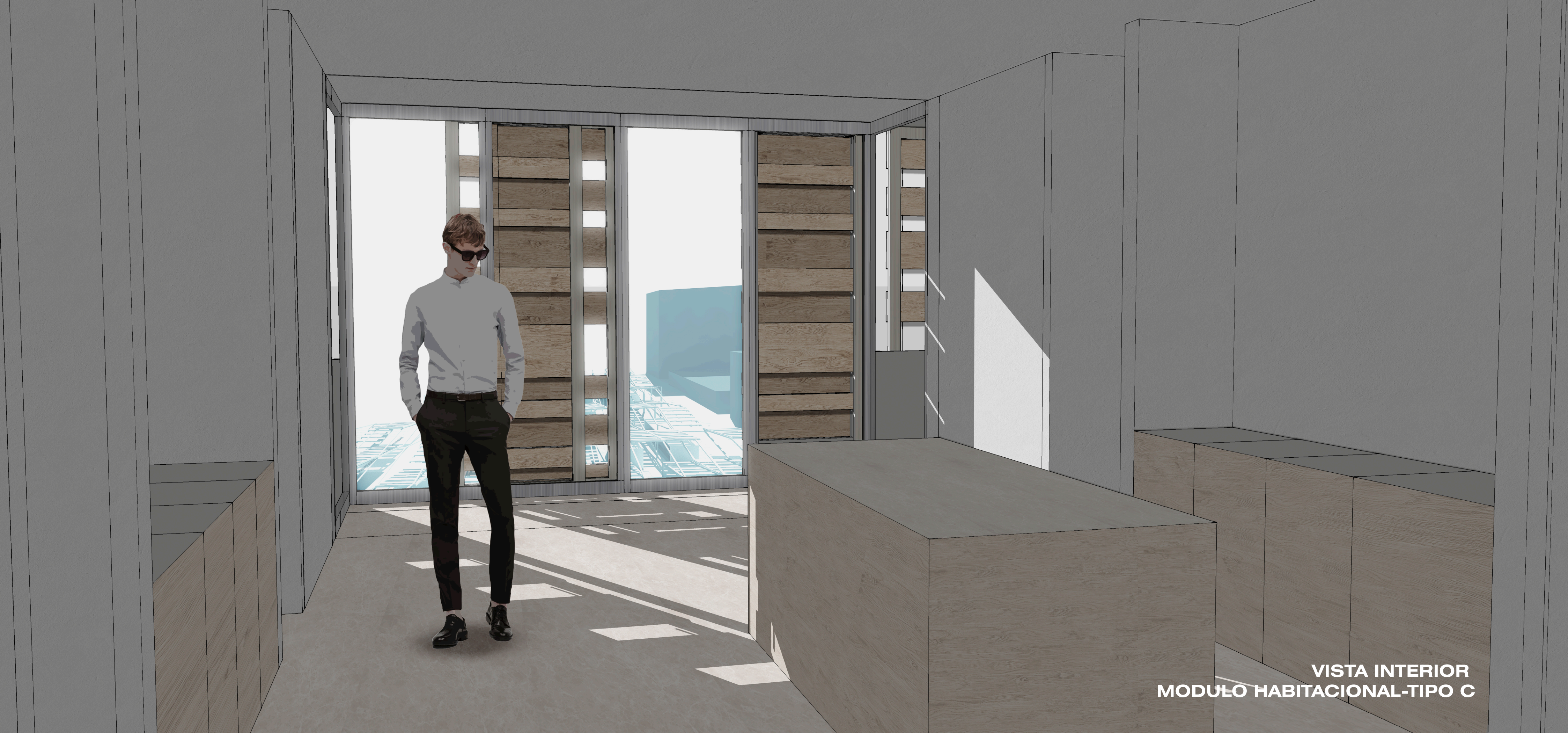
3

1

SECCIÓN A 1:200

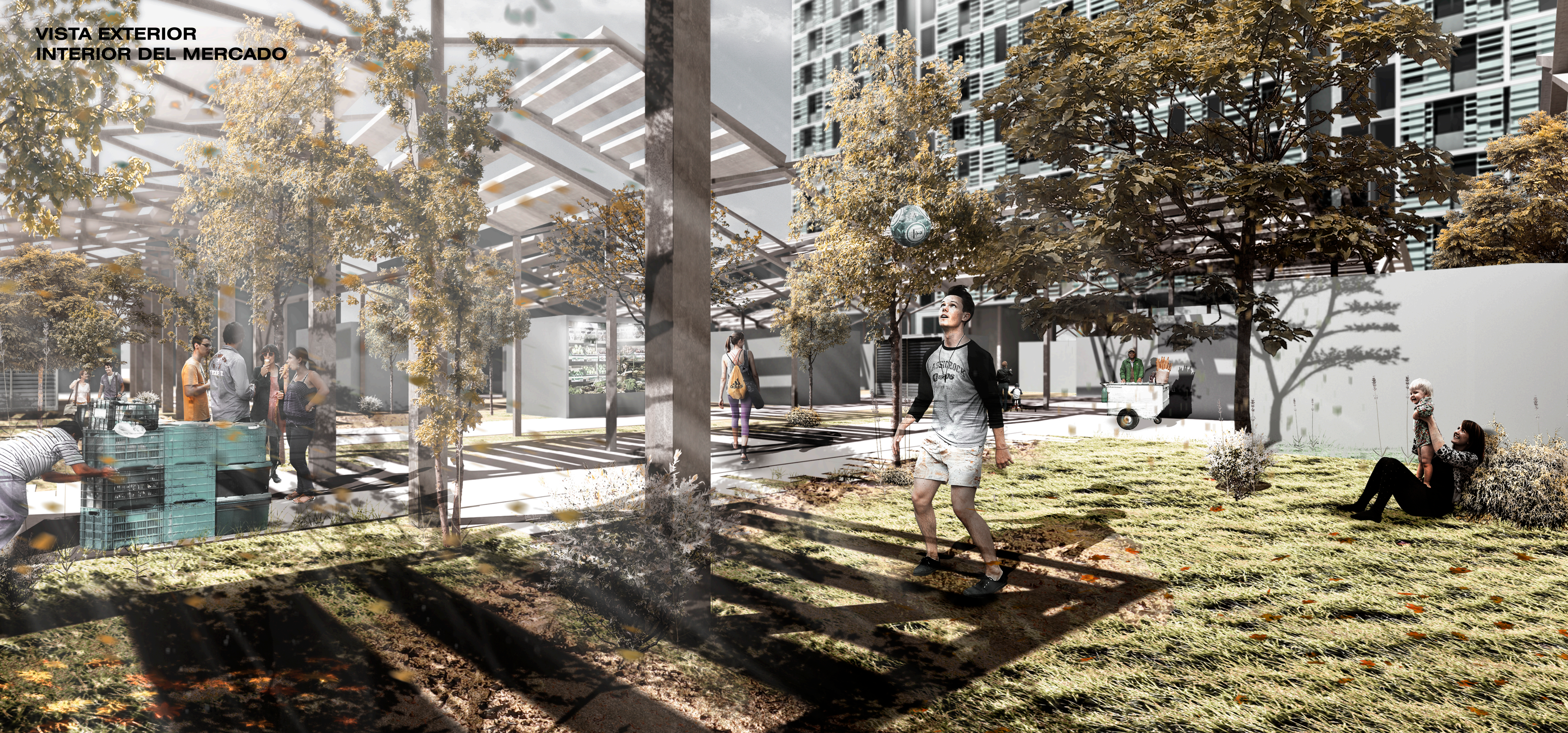


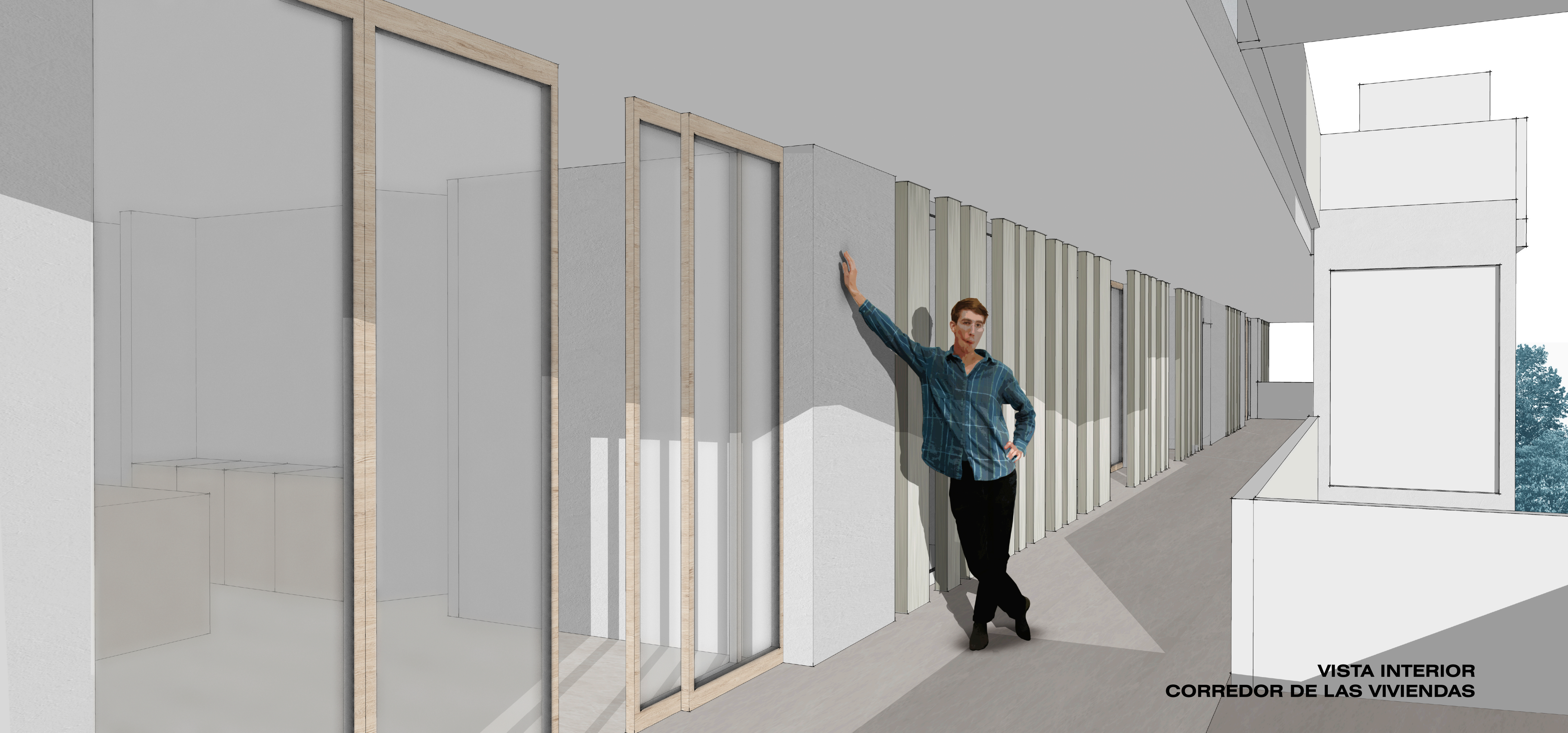
PLANTA SÓTANO ESCALA 1:200



VISTA INTERIOR
MODULO HABITACIONAL-TIPO C

VISTA EXTERIOR
INTERIOR DEL MERCADO





**VISTA INTERIOR
CORREDOR DE LAS VIVIENDAS**