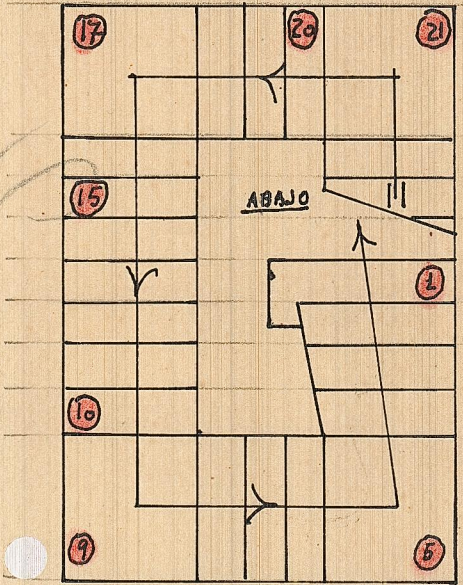


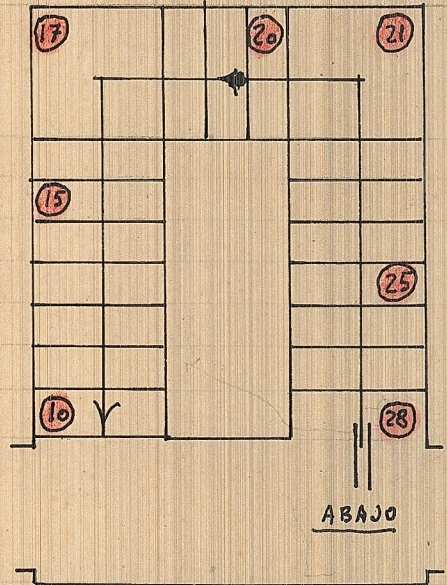
XATIBA-29-12-60

E.-1:50

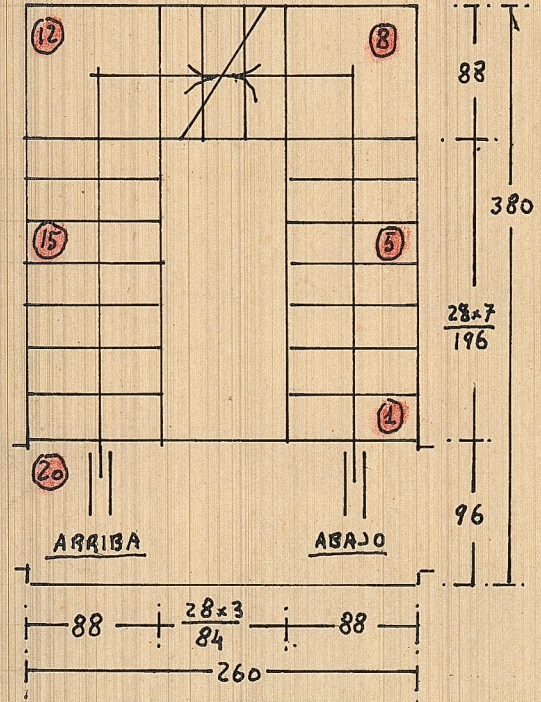
$17 \times 16'25" = 2'76" - \text{ENTRADA}$
 $28 \times 16'25" = 4'55" - \text{PISO 12}$
 $20 \times 16'25" = 3'25" - \text{PISOS ALTOS}$



AL PISO BAJO-FINAL



AL PISO BAJO-PRINCIPIO



PISOS ALTOS