

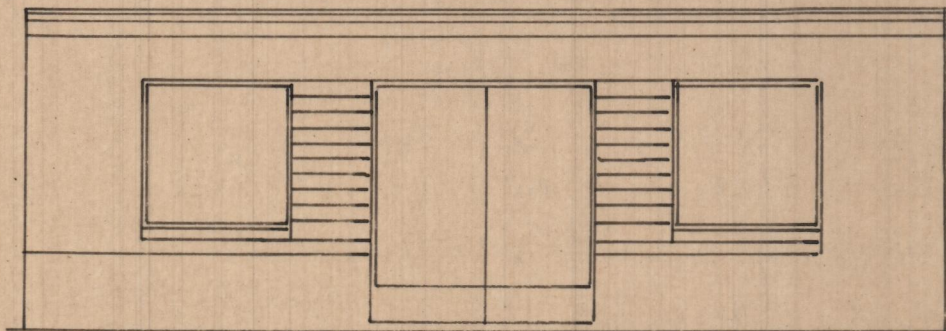
VALENCIA, DICIEMBRE. 1962

EL ARQUITECTO:

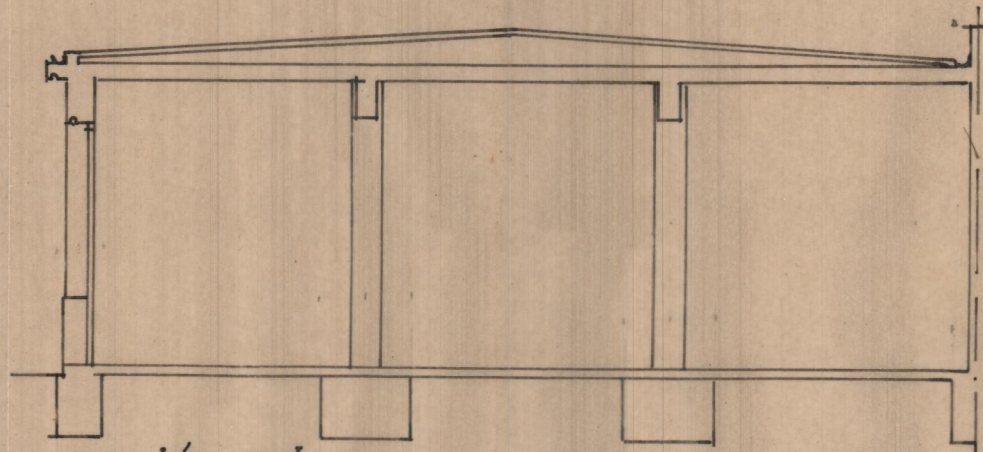
ALMACEN PARA D. JOSE CAMPOS CERVERO

EN MONSERRAT

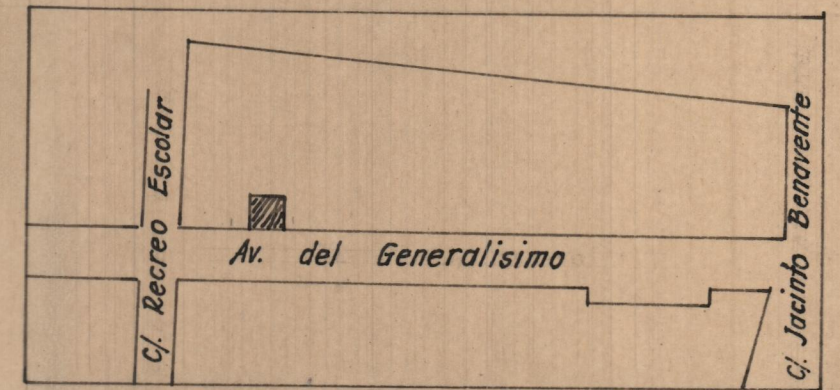
esc. 1:100



fachada

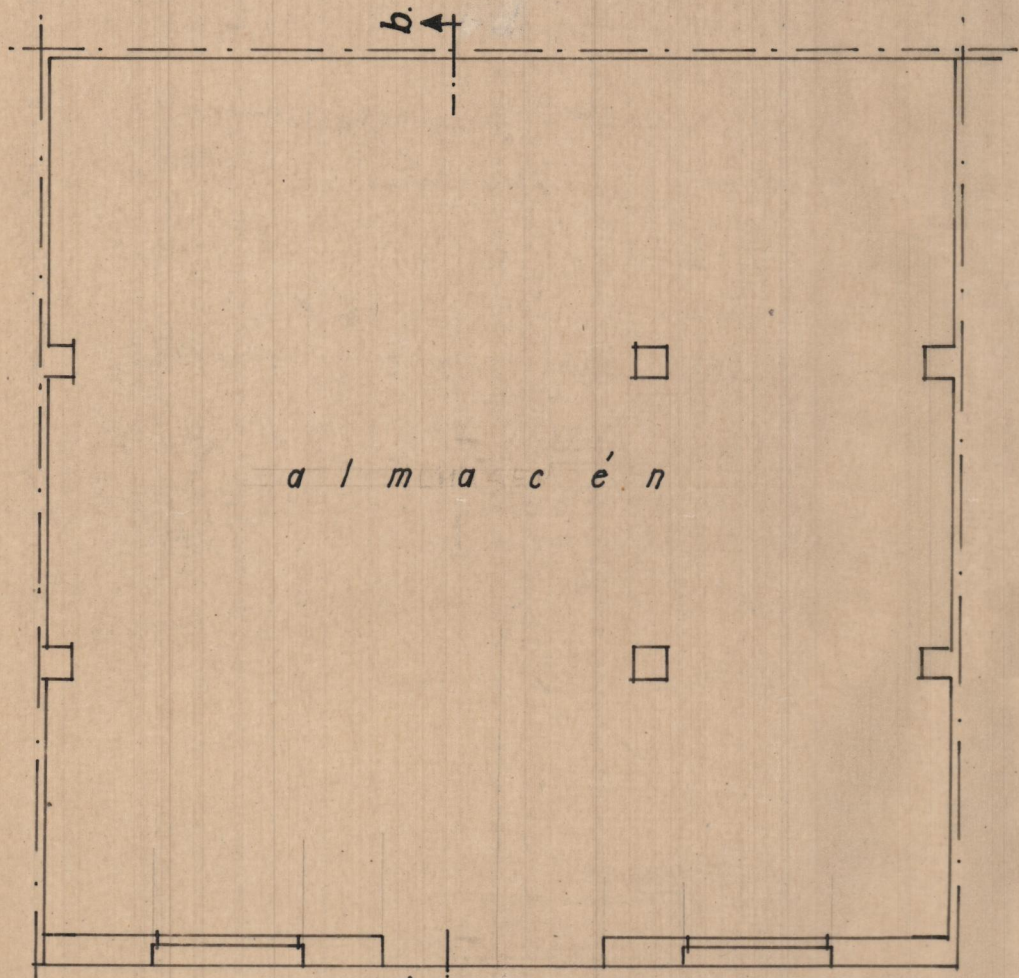


sección a-b.

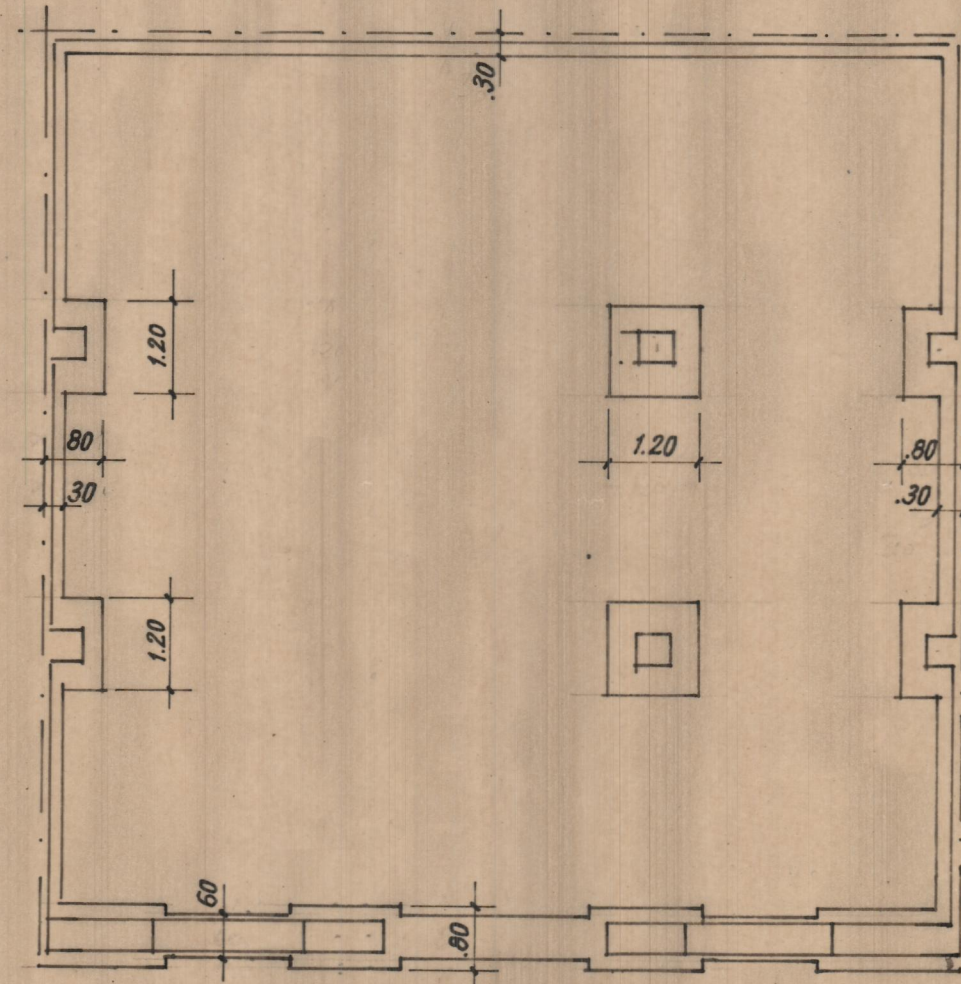


emplazamiento.-

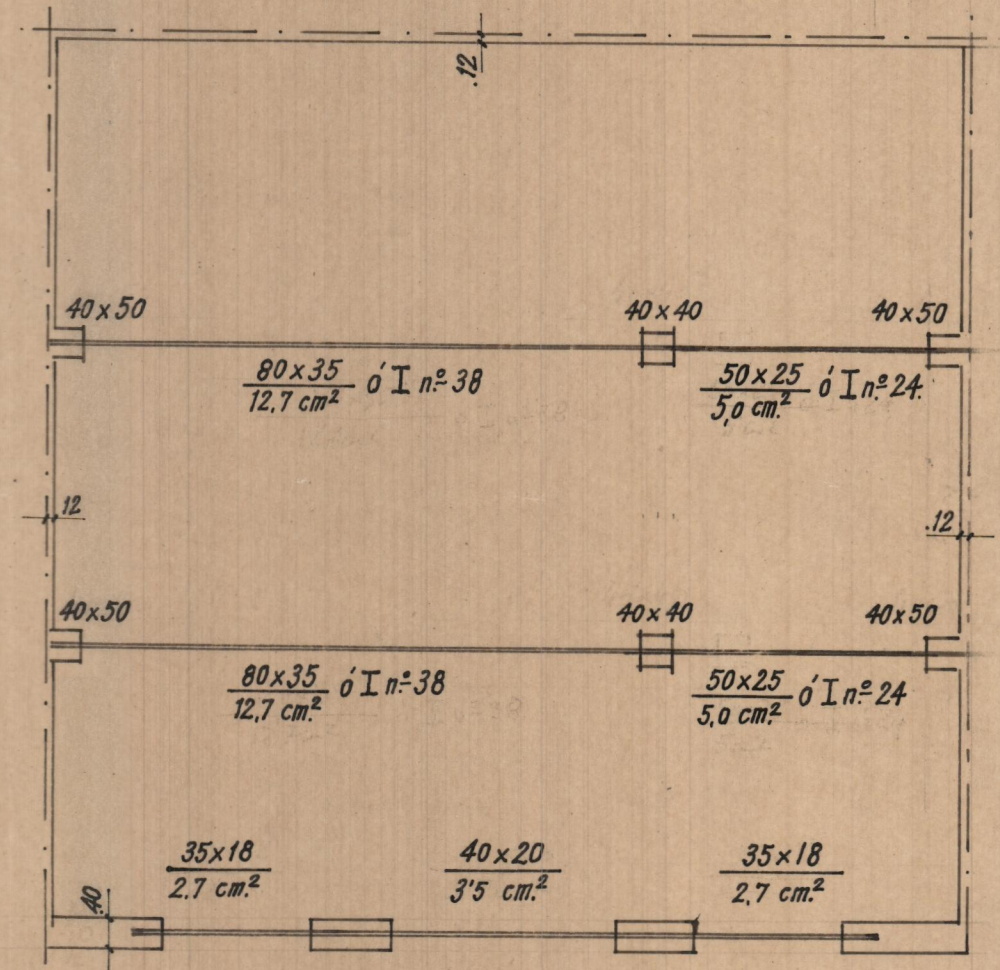
esc. 1:2000



planta de disposición



planta de cimientos



estructura de cubierta