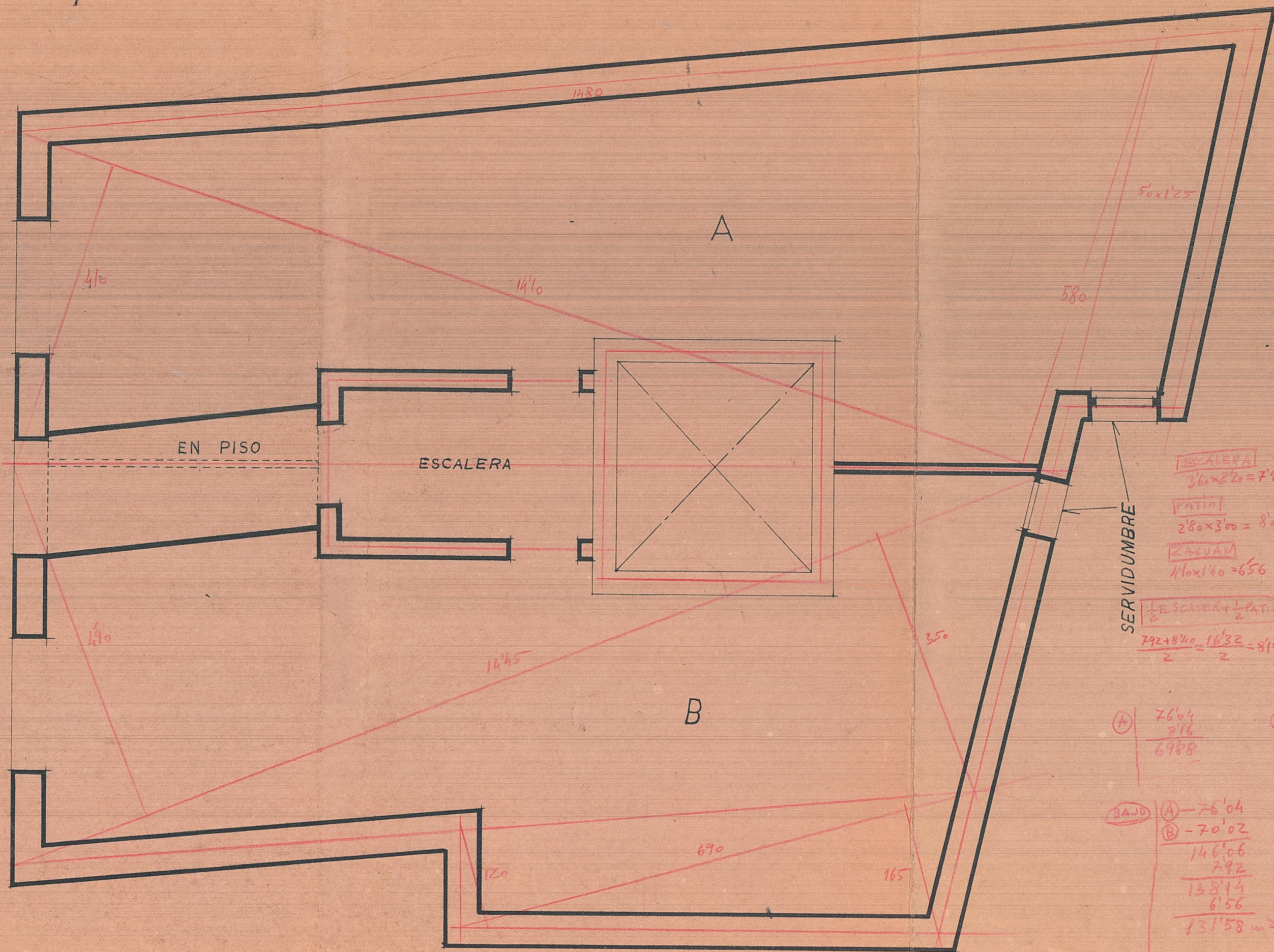


C/ VALDAURA N° 4



(A)

$$\frac{1410(410+580)}{2} = \frac{139159}{2} = 69'79$$

$$50 \times 125 = \underline{\quad\quad\quad} 6'25$$

$$\hline 76'04$$

ESCALERA

1620
320
155
085

$$2380 \times 025 = 5'95$$

(B)

$$\frac{1445(410+330)}{2} = \frac{12138}{2} = 60'19$$

$$\frac{690(120+165)}{2} = \frac{1166}{2} = 583$$

$$\hline 70'02$$

MEDIANERA

2125
640
150
625

$$2160 \times 025 = 5'25$$

2 PLANTAS BAJAS

4 ALTURAS

A = 58,32 m²

B = 50,36 m²

P.B. = 110,14 m²

S. Solar = 153,15 m²

Patio y escaleras 19'05 m²

ESCALERA

$$36 \times 20 = 7'2$$

PATIO

$$280 \times 300 = 8'40$$

ZACUAN

$$410 \times 160 = 6'56$$

(ESCALERA + 1/2 PATIO)

$$\frac{792 + 840}{2} = \frac{1632}{2} = 816$$

(A)

7664
816
6988

(B)

7002
816
6186

BAJO

(A) - 76'04
(B) - 70'02
146'06
792
138'14
6'56
131'58 m ²

SOLAR

(A) - 2604
(B) - 70'02
146'06
5'95
5'25
157'26