

# Climate change and food security to 2030: a global economy-wide perspective

Ernesto Valenzuela<sup>1</sup>, Kym Anderson<sup>2</sup>

---

**ABSTRACT:** The effects of climate change on agriculture raise major food security concerns. We use a global economy-wide model to assess the effects on farm product prices of expected yield changes. Also modelled is an expected adverse effect of higher temperatures and humidity in the tropics on the productivity of unskilled workers in developing countries. Given the degrees of uncertainty about plausible effects of climate change, our modelling accounts for a range of yield productivity and labor shocks. The results entail consequences for international agricultural prices, national food consumption, self sufficiency, net farm income and economic welfare.

---

**KEYWORDS:** Climate change, crop and labor productivity growth, global economy-wide model projections.

---

**JEL classification:** D58, F17, Q17, Q24, Q54.

---

## Cambio climático y seguridad alimentaria al 2030: una perspectiva global de la economía en general

---

**RESUMEN:** Los efectos de variaciones climáticas sobre las actividades agrícolas han provocado preocupación acerca de los impactos en la seguridad alimentaria. Este estudio usa un modelo global de economía-general para evaluar los efectos de variaciones en la productividad de las cosechas, y una disminución de la productividad laboral en los trópicos debido a incrementos en la temperatura y humedad en países menos desarrollados. Considerando el grado de incertidumbre acerca de los posibles efectos de las variaciones climáticas, nuestro estudio toma en cuenta rangos de efectos sobre la productividad agrícola y laboral. Los resultados muestran consecuencias sobre los precios agrícolas mundiales, consumo nacional, auto-suficiencia, ingreso neto agrícola y bienestar económico.

---

**PALABRAS CLAVES:** Cambio climático, impactos productividad cultivos laboral, proyecciones globales económicas.

---

**Clasificación JEL:** D58, F17, Q17, Q24, Q54.

---

---

<sup>1</sup> Monash University-Gippsland, School of Business and Economics.

<sup>2</sup> School of Economics, University of Adelaide.

*Dirigir correspondencia a:* Ernesto Valenzuela. E-mail: ernesto.valenzuela@monash.edu

Recibido en noviembre de 2010. Aceptado en abril de 2011.

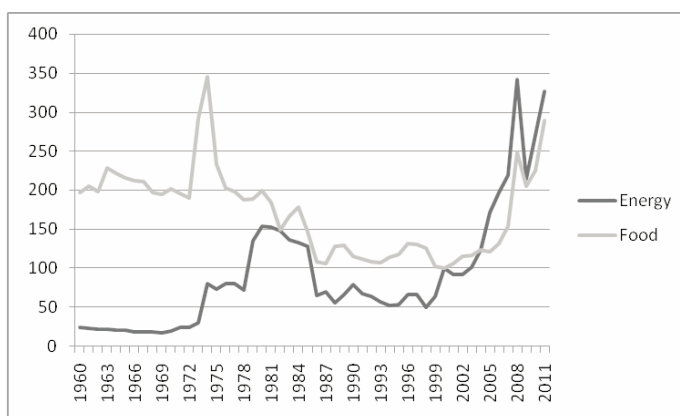
## 1. Introduction

Following the upward spike in international prices of many primary commodities in 2008, and in light of on-going climate changes, policy makers and the general public have once again become concerned about food security at both national and global levels. Tough prices on international markets for food and energy raw materials came down quickly from their mid-2008 peaks, they rose again in 2010-11 and they remain high by historical standards. More than that, the trend in food prices has been noticeably upward over the past decade, in contrast to its downward trend over most of the 20<sup>th</sup> century; and, since the introduction of biofuel subsidies and mandates particularly in the US and EU a few years ago, food prices seem to be closely tracking fossil fuel prices – again in contrast to most of the second half of the 20<sup>th</sup> century (Figure 1).

While affluent people in high-income countries can cope with higher prices of farm products, the poorest households of those countries, and a far higher proportion of non-farm households in developing countries, suffer when food prices are high. Even some farm households can be worse off, for example those that produce predominantly cash crops, the prices of which have not risen by as much as those of staple food crops, and those that earn the majority of their income from off-farm activities. Food crises can spark urban riots, as happened in numerous food-deficit developing countries in 2008 and 2011, and can even bring down governments. When followed by natural disasters (as with the earthquake in Haiti and the floods in Pakistan in 2010), the outcome can be catastrophic.

Figure 1

### International price indexes for food and fossil fuel energy raw materials, 1960 to 2011a



a The 2011 data refer only to the first 2 months (January and February).

Source: World Bank, Commodity Price Data (Pink Sheets, see <http://go.worldbank.org/5AT3JHWYU0>).

Climate change is expected to add to these food security concerns over the next two decades, and would do so even if global strategies to mitigate greenhouse gas emissions were to be introduced immediately. Warmer temperatures and altered precipitation patterns and thus water availability are expected, as are more-frequent extreme weather events. The associated crop productivity changes may be beneficial initially in some cooler temperate regions in the higher latitudes and altitudes, but climate change is widely expected to reduce farm land and labor productivity in the tropics – and globally –, notwithstanding expected improvements in some cool areas (see, e.g., Cline, 2007; Kjellstrom *et al.*, 2009; Mendelsohn, 2009; Nelson *et al.*, 2010).

What market, economic welfare and food self sufficiency effects might these expected changes in productivity of global agricultural resources have? If they were progressively to lower world food output, the international food price trend would move onto a higher trajectory, depending on how each country and commodity market responded to climate change. Thus most farm families in developing countries are not necessarily going to lose out economically from climate change: it is always possible that the change in the price of their output may more than offset any fall in their farm productivity. Even so, food security concerns may increase if food prices are higher and self-sufficiency ratios are lower, particularly in net food-importing developing countries (Hertel and Rosch, 2010).

This paper seeks to provide a sense of how climate change might impact on the world's markets for farm products if there is no mitigation or adaptation other than in response to price changes. We make use of a global economy-wide model, the global GTAP model (Hertel, 1997), first to provide a projection of the world economy to 2030 with no climate or policy changes, and then to compare that baseline with projections which incorporate assumed impacts of climate change over the next two decades on productivity (based on damage function analyses reported in recent studies). Only the two most direct biophysical changes that affect agriculture are modeled. The first is in crop land productivity, drawing on the interpretation of damage functions by Hertel *et al.* (2010), which in turn is informed by the careful assessment of the scientific evidence by Lobell and Burke (2008).<sup>1</sup> The second relates to the impact of higher temperatures and humidity on the productivity of unskilled labor in the already hot and humid tropics, drawing on the interpretation of its debilitating effects by van der Mensbrugge and Roson (2010) which in turn draws on Kjellstrom *et al.* (2009).

National and global economic welfare effects (equivalent variations of income) are also estimated in the GTAP model. Their magnitudes are shown to be small with respect to projected real income, suggesting that there must be other costs of climate change not examined here to warrant the sorts of major policy response being called for (such as carbon emission taxes and border tax adjustments). However, it needs to be kept in mind from the outset that we are imposing only that subset of shocks expected to come from climate change that affects farming most, and we are using a comparative static model that – unlike a dynamic stochastic model – cannot capture

<sup>1</sup> These authors define three productivity scenarios: low, medium and high. The low (high) productivity scenario is a world with rapid (slow) temperature increase, high (low) sensitivity of crops to warming and a lower (higher) bound of the CO<sub>2</sub> fertilization effect.

the sporadic additional costs to farmers and others of more-frequent extreme weather events, such as floods, droughts, frosts, hail and wind.

Section 2 of the paper describe the GTAP model and how we use it to project the world economy to 2030 (the baseline scenario). Section 3 presents two main alternative scenarios for 2030, to represent expected features of climate change that directly affect agriculture: one involving just crop productivity changes, the other also allowing for changes in unskilled labor productivity in developing countries. We implement variations in the magnitude of these shocks to assess the robustness and linearity of results. Like all such modelling, the results depend on various assumptions, so a number of caveats are discussed in Section 4 before the paper concludes with some implications for food security and farm policies.

## **2. Projecting a baseline to 2030 with the GTAP model**

The standard GTAP model (Hertel, 1997) is perhaps the world's most widely used economy-wide model for economy-wide global market analysis, in part due to its robust and explicit assumptions. In its simplest form, the model as used here is comparative static and assumes perfect competition and constant returns to scale in production. The functional forms are nested constant elasticities of substitution (CES) production functions. Land and other natural resources, labor (skilled and unskilled), and produced physical capital substitute for one another in a value added aggregate, and composite intermediate inputs substitute for value-added at the next CES level in fixed proportions. Land is specific to agriculture in the GTAP database, and is allowed to be highly mobile between alternative agricultural uses. A Constant Elasticity of Transformation (CET) revenue function transforms land from one use to another. There is also a very low elasticity of transformation between alternative uses of other natural resources. In the default GTAP closure, labor and capital are assumed to be mobile across all uses within a country but immobile internationally.

On the demand side there is a regional representative household whose expenditure is governed by a Cobb-Douglas aggregate utility function which allocates net national expenditures across private, government, and saving activities. The greatest advantage of this regional household representation is the unambiguous indicator of economic welfare given by the regional utility function, expressed as an equivalent variation in income. Government demand across composite goods is determined by a Cobb-Douglas assumption (fixed budget shares). Private household demand is represented by a Constant Difference of Elasticities (CDE) functional form, which has the virtue of capturing the non-homothetic nature of private household demands as well as permitting the user to calibrate the model to specific own-price elasticities of demand. For present purposes, we recalibrate the income elasticities of China and India to account for their projected very rapid income growth.

Bilateral international trade flows are handled through the Armington (1969) specification, by which products are differentiated by country of origin. These Armington elasticities are the same across regions but are sector-specific, and they are esti-

mated at the disaggregated GTAP commodity level (Hertel *et al.*, 2007). We follow the practice of many other GTAP users and deal with long-term changes by doubling these standard short-to-medium term elasticities.

The standard macro-economic closure assumes that the levels of each region's employment of each of the productive factors is unchanged in aggregate, and that the regional balance of trade is determined by the relationship between regional investment and savings, where foreign investment is allocated in fixed shares across regions so that it moves in line with global savings. This fixed shares mechanism, which could be interpreted as a partial long-run equilibrium, with international capital reallocation left out, is more predictable (conservative) than the standard rate of return closure.

The full GTAP 7.0 database comprises 113 regions in addition to the 57 sectors/product groups, but to make the model more manageable we have aggregated it to 23 sectors/product groups and 23 regions (see Annex Tables A1 and A2). It is initially calibrated to the year 2004. The standard GTAP protection database (see Narayanan and Walmsley, 2008) is altered to include a more complete set of estimates of distortions in agricultural prices in developing countries, based on Valenzuela and Anderson (2008).<sup>2</sup> Those distortion estimates suggest that, despite reforms in the past 25 years, there was still a considerable range of industry assistance rates across commodities and countries in 2004, including a strong anti-trade bias in national agricultural and trade policies for many developing countries. Furthermore, non-agricultural protectionism is still rife in some developing countries, and agricultural price supports in some high-income countries<sup>3</sup> remain high.

To project the world economy to 2030 using this comparative static model, we assume policies as in 2004 and that the stock of agricultural land and mineral reserves does not change in each region but that population, labor, capital and real GDP grow at the rates shown in Annex Table A3, from which the implied rates of total factor productivity and GDP per capita growth are derived as shown in the final two columns of that table.<sup>4</sup> The exogenous growth rates are based on World Bank and OECD projections (see, e.g., van der Mensbrugge and Roson, 2010; Duval and de

<sup>2</sup> That distortions database is documented fully in Anderson and Valenzuela (2008) and is based on the methodology summarized in Anderson *et al.*, 2008.

<sup>3</sup> High-income countries are defined in this paper to include Russia and other East European and Central Asian countries that are not members of EU27.

<sup>4</sup> Economically exploitable mineral reserves are depleted each year but they are also added to through new discoveries and improvements in exploitation technologies. In recent decades those reserves have tended to increase rather than fall (BP, 2010), so our assumption of no change will project higher mineral and energy prices than would prevail if past reserves trends were to continue. Since 1990, arable land used for farming has decreased slightly (less than 2 percent per year) in high-income and transition countries, has changed little in South and Southeast Asia and in North Africa and the Middle East, but has grown slightly (at less than 2 percent per year) in East Asia, Latin America and Sub-Saharan Africa (Deininger and Byerlee, 2011, Table 1.1 based on FAOSTAT data). Had those rates of change been assumed to continue for another two decades, in place of our assumption of no change in land area, the aggregate results reported below would have changed only slightly.

la Maisonneuve, 2009).<sup>5</sup> The rate of total factor productivity growth is assumed to be the same in each of the non-primary sectors, and to be somewhat higher in the primary sectors as detailed in the footnote to Annex Table A3. Higher productivity growth rates for primary activities were characteristic of the latter half of the 20<sup>th</sup> century (Martin and Mitra, 2001), and are necessary in this projection if real international prices of primary products (relative to the aggregate change for all products) are to follow a flat trend.<sup>6</sup>

The differences across regions in rates of growth of endowments and total factor productivity, and the fact that sectors differ in their relative factor intensities, ensure that the structures of production, consumption and trade across sectors within countries, and also between countries, are going to be different in 2030 than in 2004. Those changes are reported in detail in a companion background paper by Valenzuela and Anderson (2011). The faster-growing developing countries (especially those of Asia) take up a considerably larger share of the projected global economy over the next two decades. Their share of world GDP rises from 20 percent in 2004 to 30 percent by 2030.

The developing country share of global exports of all products increases from just under one-third in 2004 to a little over one-half by 2030. China's shares alone grow from 4 to 8 percent of global GDP and from 7 to 16 percent of global exports. China's export growth is largely at the expense of high-income countries rather than any developing country regions. By contrast the developing country share of global exports of agricultural product falls slightly, from 33 to 27 percent between 2004 and 2030, while the developing country share of global farm imports rises dramatically, from 32 to 56 percent. Recall, though, that we are assuming no change in agricultural or trade policies over the projection period.<sup>7</sup>

With real prices of primary products not falling as they did in the 20<sup>th</sup> century, the normal transition from primary to manufacturing and service sector activities occurs less rapidly in our projection to 2030, at least for developing countries. Sectoral shares of national exports and imports, however, change somewhat more. For developing countries, farm and other primary products become less important in their overall exports and more important in their overall imports, and conversely for high-

<sup>5</sup> Since completing this study, a new set of preliminary projections to 2050 have been released by CEPII in Paris (Fouré *et al.*, 2010). The exogenous assumptions in the present study are broadly in line with that CEPII study.

<sup>6</sup> The reason for choosing that calibration, as explained in Valenzuela and Anderson (2011), is to be consistent with the World Bank projections over the next two decades in van der Mensbrugge and Roson (2010). An alternative in which primary product prices fall, as projected in GTAP-based projection studies in the late 20<sup>th</sup> century (e.g., Anderson *et al.*, 1997), is considered unlikely over the next two decades given the slowdown in agricultural R&D investment since 1990 and its consequent delayed slowing of farm productivity growth (Alston *et al.*, 2010). Our assumed total factor productivity growth for agriculture between 2004 and 2030 of around 2.0 and 2.4 percent for high-income and developing countries compares with estimated rates for 1967 to 1992 of 3.4 percent for high-income countries and between 1.8 and 2.6 percent for developing countries (Martin and Mitra, 2001).

<sup>7</sup> Perhaps a more likely scenario, especially for rapidly growing Asia, would be a steady rise in agricultural protection to slow the decline in food self sufficiency – as has happened over the past 50 years in the most advanced Asian economies (Anderson, 2009).

income countries (Tables 9 and 10 of Valenzuela and Anderson, 2011). Thus in the baseline projection agricultural self-sufficiency in developing countries falls from 98 percent in 2004 to 93 percent by 2030, with most of that fall concentrated in East and South Asia (first two columns of Table 1). Even so, the developing countries' share of global agricultural GDP rises from 50 percent in 2004 to a projected 65 percent by 2030. Their shares of GDP from other primary products and from manufactures also rise, from 54 to 63 percent and from 25 to 39 percent, respectively (Table 11 of Valenzuela and Anderson, 2011), reflecting the much higher GDP growth rate assumed for developing countries, particularly China and, in the case of agriculture, also India.

### 3. Alternative scenarios for 2030

Given the baseline projections summarized above, we use the GTAP model to simulate the market and welfare effects, first of the direct impact of climate change on crop yields in different parts of the world, and then also of the projected impacts of climate change on unskilled labor productivity in tropical developing countries.

#### 3.1 Crop productivity effects

The direct impacts of climate change on crop productivity have been examined by many analysts, and there still remains considerable uncertainty as to even their sign let alone their magnitude (Gornall *et al.*, 2010). Nonetheless, for present purposes we adopt the rates for the period from 2004 to 2030 used by Hertel, Burke and Lobell (2010) following their extensive review of the relevant scientific literature. We make only a few minor adjustments, e.g., for Australia so as to be more consistent with the *Garnaut Climate Change Review* (Garnaut, 2008; see also Gunasekera *et al.*, 2007). Those yield shocks are summarized in Annex Table A4. They represent a most-likely or medium case, along with a low-productivity and a high-productivity case. These estimates are intended to depict a range of plausible effects, and can be thought of as the 5<sup>th</sup> and 95<sup>th</sup> percentile values in a distribution of potential yield impacts (Hertel *et al.*, 2010).

There are several points worth noting about those shocks. First, there is a wide range of effects between the low and high scenarios for each region. Second, they tend to be positive in all but the low crop productivity scenario for high-income temperate countries (except for coarse grains). Third, they are generally negative for developing countries except in the high productivity scenario. And fourth, those yield shocks are very small over a long 26 years period, when compared with the annual productivity growth rates reported in Annex Table A3. More than that, farm land is projected to account throughout the next two decades for less than one-tenth of GDP in all but the most agrarian of developing economies and to be below 2 percent in high-



income countries and globally (Table 13 of Valenzuela and Anderson, 2011).<sup>8</sup> Hence the net economic effects of these direct crop yield impacts of climate change will necessarily be small in proportional terms – even though they may have large impacts on very seriously affected regions within some countries, including the hot irrigated horticultural and rice- and cotton-growing regions of Australia and the United States.

The effects of these climate change-induced direct crop productivity impacts on national agricultural self sufficiency for the sector as a whole in 2030, as compared with the baseline in that year, amount to no more than 2 percentage points except for Australia, New Zealand and Argentina (Table 1). The effects on production, consumption and trade, summarized in percentage terms in Table 2, are somewhat larger than the effects on self sufficiency, but are still relatively small overall. By 2030 the projected volume of agricultural output may be expected to shrink by no more than 2 percent in developing countries in the medium case. In the low-productivity case the adverse effects are larger, ranging down to -5.6 percent for India and -6.5 percent for Sub-Saharan Africa.

TABLE 1

**Effects of economic growth, crop yield and labor productivity changes due to climate change on agricultural self sufficiency from 2004 to 2030**

| Regions           | Base 2004 | Base 2030 | Crop productivity shock |     |      | Unskilled labor productivity shock |     | Medium Crop and -3% unskilled labor productivity shock |
|-------------------|-----------|-----------|-------------------------|-----|------|------------------------------------|-----|--|
|                   |           |           | Low                     | Med | High | -3%                                | -6% |  |
| USA               | 103       | 112       | 111                     | 112 | 112  | 112                                | 112 | 112  |
| Canada            | 108       | 119       | 121                     | 120 | 119  | 119                                | 119 | 120  |
| EU27 and EFTA     | 94        | 101       | 104                     | 102 | 100  | 101                                | 101 | 102  |
| Russia            | 89        | 90        | 89                      | 90  | 91   | 90                                 | 90  | 90   |
| Rest of EE/C Asia | 100       | 100       | 102                     | 101 | 101  | 100                                | 100 | 101  |
| Australia         | 138       | 152       | 159                     | 154 | 151  | 153                                | 152 | 154  |
| New Zealand       | 161       | 172       | 179                     | 174 | 169  | 173                                | 172 | 174  |
| Japan             | 83        | 83        | 84                      | 84  | 83   | 83                                 | 83  | 84   |
| Korea             | 81        | 80        | 80                      | 82  | 83   | 79                                 | 79  | 82   |
| HK/Sing/Taiwan    | 66        | 65        | 66                      | 66  | 66   | 65                                 | 65  | 65   |
| China             | 97        | 90        | 88                      | 89  | 90   | 90                                 | 90  | 89   |
| Indonesia         | 95        | 84        | 84                      | 84  | 88   | 84                                 | 84  | 84   |
| Malaysia          | 60        | 45        | 42                      | 45  | 47   | 46                                 | 45  | 45   |
| Thailand          | 112       | 98        | 95                      | 97  | 98   | 97                                 | 98  | 97   |
| Rest of East Asia | 100       | 90        | 87                      | 89  | 90   | 89                                 | 90  | 89   |

<sup>8</sup> The land's share of agricultural GDP is projected to rise by 2030, however. This is in contrast to what T.W. Schultz (1951) anticipated, but is not inconsistent with the developments expected over the coming decades as reviewed, for example, by Hertel (2010).



TABLE 1 (continued)

**Effects of economic growth, crop yield and labor productivity changes due to climate change, on agricultural self sufficiency, from 2004 to 2030**

| Regions               | Base 2004 | Base 2030 | Crop productivity shock |     |      | Unskilled labor productivity shock |     | Medium Crop and -3% unskilled labor productivity shock |
|-----------------------|-----------|-----------|-------------------------|-----|------|------------------------------------|-----|--|
|                       |           |           | Low                     | Med | High | -3%                                | -6% |  |
| Rest of S. Asia       | 96        | 86        | 84                      | 85  | 86   | 86                                 | 86  | 85   |
| Argentina             | 142       | 146       | 155                     | 145 | 141  | 145                                | 146 | 145  |
| Brazil                | 123       | 132       | 134                     | 132 | 130  | 133                                | 132 | 132  |
| Rest of L. America    | 102       | 95        | 93                      | 94  | 95   | 95                                 | 95  | 94   |
| M. East/N. Africa     | 84        | 83        | 83                      | 83  | 83   | 82                                 | 82  | 83   |
| South Africa          | 107       | 115       | 117                     | 115 | 112  | 116                                | 115 | 115  |
| Rest of SS Africa     | 102       | 97        | 93                      | 96  | 98   | 97                                 | 97  | 96   |
| High-income countries | 103       | 112       | 114                     | 112 | 111  | 112                                | 112 | 112  |
| Developing countries  | 98        | 93        | 91                      | 92  | 93   | 92                                 | 92  | 92   |
| World                 | 100       | 100       | 100                     | 100 | 100  | 100                                | 100 | 100  |

Source: Authors' simulations.

Typically, the farm gate price of products is projected to move in the opposite direction to farm production in response to these yield shocks though, and to a greater extent. For the sector globally, the effect on production may be expected to be in the range of -1.3 to 0.6 percent whereas for farmgate prices the range is 6.7 to -2.4 percent (corresponding to low to high productivity shocks, respectively). There is an even greater effect on agricultural value added (which also takes account of changes in input prices): at global level it may be expected to change by between -8.6 and 3.6 percent (last row of Table 2).

The volume of farm products consumed in developing countries may be expected to fall in all but the high productivity case. The extent of the change is less than for production though, because incomes earned from non-farm activities will not fall as much as those from farming.

The difference between the production and consumption effects is the effect on trade. Since most developing countries are reasonably close to self-sufficiency in farm products (see Table 1), the effect on their trade would be an amplification of the effect on production or consumption were it not for the fact that in most cases these two latter effects are both negative and so are somewhat offsetting (which is why self sufficiency levels are projected to change so little in Table 1). Hence agricultural imports of developing countries increase only slightly in the medium case, and actually fall slightly in the high productivity case. In the low productivity case, however, some countries would see a sizeable increase in their food imports (final columns of Table 2). In that case it would be high-income countries whose farm exports would increase (by 10 percent).

TABLE 2  
**Effects of crop productivity shocks due to climate change on agricultural prices, production, consumption, value added and trade, 2030. (Percent deviation from baseline in projected year)**

| Regions                | Farm price |      |      | Agricultural production volume |      |      | Agricultural consumption volume |      |      | Agricultural value added |      |      | Value of agricultural exports |       |       | Value of agricultural imports |      |       |      |
|------------------------|------------|------|------|--------------------------------|------|------|---------------------------------|------|------|--------------------------|------|------|-------------------------------|-------|-------|-------------------------------|------|-------|------|
|                        | Low        | Med  | High | Low                            | Med  | High | Low                             | Med  | High | Low                      | Med  | High | Low                           | Med   | High  | Low                           | Med  | High  |      |
|                        | USA        | 5.7  | 0.9  | -2.0                           | -2.6 | -0.3 | 0.9                             | -2.2 | -0.4 | 0.8                      | -8.5 | -1.6 | 3.9                           | 0.8   | 0.8   | 0.8                           | -0.9 | 14.2  | 0.9  |
| Canada                 | 4.2        | 0.3  | -2.2 | 0.3                            | 1.3  | 1.5  | -1.5                            | 0.2  | 1.4  | -9.4                     | -2.3 | 3.8  | 8.6                           | 3.9   | 3.9   | -0.3                          | 7.1  | 0.5   | -3.6 |
| EU27 and EFTA          | 1.7        | -0.2 | -1.3 | 3.9                            | 1.2  | -1.2 | 0.4                             | 0.3  | 0.0  | -9.2                     | -0.8 | 5.3  | 18.3                          | 3.9   | 3.9   | -6.8                          | 0.9  | -0.8  | -1.0 |
| Russia                 | 4.2        | -0.2 | -3.1 | -1.5                           | 0.8  | 2.4  | -0.9                            | 0.2  | 1.0  | -4.6                     | -0.7 | 2.1  | 11.1                          | 10.2  | 10.0  | 5.9                           | -1.5 | -6.4  |      |
| Rest of Europe/C. Asia | 4.2        | -0.5 | -3.5 | 0.8                            | 1.6  | 1.9  | -1.2                            | 0.3  | 1.2  | -7.6                     | -0.9 | 4.2  | 28.7                          | 13.0  | 0.1   | 7.3                           | -1.8 | -7.3  |      |
| Australia              | 4.1        | 0.6  | -2.2 | 2.3                            | 0.9  | 0.9  | -2.1                            | -0.2 | 1.6  | -9.2                     | -2.1 | 3.1  | 10.5                          | 2.8   | -0.8  | 7.2                           | 1.2  | -5.8  |      |
| New Zealand            | 1.9        | 0.2  | -0.9 | 5.4                            | 1.5  | -1.7 | 1.0                             | 0.6  | -0.2 | -9.0                     | -2.0 | 3.8  | 11.2                          | 2.7   | -3.8  | 3.3                           | -0.3 | -1.9  |      |
| Japan                  | 1.1        | -0.4 | -1.3 | 2.7                            | 0.7  | -0.8 | 1.4                             | 0.4  | -0.4 | -6.6                     | -0.1 | 4.5  | 87.0                          | 14.9  | -24.7 | 0.4                           | -0.5 | 0.0   |      |
| Korea                  | 1.4        | -3.4 | -7.0 | 2.9                            | 4.3  | 5.5  | 1.8                             | 1.5  | 1.5  | -6.7                     | 0.0  | 5.6  | 58.9                          | 44.1  | 33.8  | 2.0                           | -5.4 | -10.8 |      |
| HongKong/Sing/Taiwan   | 2.2        | 0.3  | -2.5 | 3.6                            | 1.2  | 1.7  | 2.1                             | 0.5  | -0.2 | -9.0                     | -2.1 | 3.8  | 31.8                          | 11.5  | -1.3  | 3.8                           | 0.9  | -3.4  |      |
| China                  | 12.7       | 4.3  | -1.5 | -4.1                           | -1.7 | 0.1  | -1.7                            | -0.8 | 0.0  | -12.1                    | -4.5 | 1.8  | -24.0                         | -20.2 | -18.8 | 18.0                          | 6.1  | -2.4  |      |
| Indonesia              | 4.7        | 1.4  | -9.7 | 0.1                            | -0.6 | 6.4  | 0.4                             | -0.2 | 2.1  | -5.8                     | -0.8 | 5.7  | 41.9                          | 8.6   | 66.4  | 3.0                           | 1.8  | -18.5 |      |
| Malaysia               | 5.8        | 1.1  | -2.7 | -3.5                           | -1.1 | 1.3  | 3.5                             | 0.5  | -1.6 | -4.0                     | -0.3 | 2.8  | 1.9                           | -0.7  | -3.4  | 9.1                           | 1.8  | -4.0  |      |

**TABLE 2. (Continued)**  
**Effects of crop productivity shocks due to climate change on agricultural prices, production, consumption, value added and trade, 2030. (Percent deviation from baseline in projected year)**

| Regions               | Farm price |     |      | Agricultural production volume |      |      | Agricultural consumption volume |      |      | Agricultural value added |      |      | Value of agricultural exports |      |       | Value of agricultural imports |      |      |
|-----------------------|------------|-----|------|--------------------------------|------|------|---------------------------------|------|------|--------------------------|------|------|-------------------------------|------|-------|-------------------------------|------|------|
|                       | Low        | Med | High | Low                            | Med  | High | Low                             | Med  | High | Low                      | Med  | High | Low                           | Med  | High  | Low                           | Med  | High |
| Rest of East Asia     | 7.0        | 1.7 | -2.6 | -3.7                           | -1.3 | 0.8  | -1.4                            | -0.5 | 0.4  | -5.1                     | -0.8 | 3.0  | 3.4                           | -2.6 | -6.8  | 13.2                          | 3.4  | -4.3 |
| India                 | 12.9       | 3.3 | -4.2 | -5.6                           | -1.7 | 1.6  | -3.0                            | -0.9 | 1.1  | -8.4                     | -2.1 | 3.7  | -6.0                          | -5.9 | -4.1  | 40.8                          | 12.6 | -9.5 |
| Rest of South Asia    | 6.0        | 1.3 | -2.3 | -3.4                           | -1.1 | 0.8  | -1.1                            | -0.3 | 0.3  | -4.2                     | -0.5 | 2.5  | 4.2                           | -3.3 | -8.8  | 12.6                          | 4.1  | -3.2 |
| Argentina             | 6.1        | 1.2 | -3.2 | -2.1                           | -1.7 | 1.8  | -8.1                            | -1.1 | 4.9  | -8.4                     | -0.1 | 4.9  | 11.0                          | -2.8 | -5.0  | 6.7                           | 1.8  | -2.5 |
| Brazil                | 5.2        | 0.6 | -2.5 | -1.4                           | -0.6 | -0.1 | -3.1                            | -0.4 | 1.4  | -7.3                     | -0.3 | 5.1  | 4.1                           | -1.2 | -4.7  | 6.7                           | 0.7  | -3.3 |
| Rest of Latin America | 6.5        | 1.1 | -1.7 | -2.7                           | -0.9 | -0.2 | -1.2                            | -0.3 | 0.1  | -7.2                     | -0.8 | 3.4  | -0.7                          | -4.3 | -7.9  | 10.9                          | 2.2  | -1.8 |
| Middle East/N. Africa | 4.1        | 0.0 | -2.9 | -0.2                           | 0.6  | 1.2  | -0.1                            | 0.2  | 0.4  | -6.1                     | -0.6 | 3.4  | 18.9                          | 5.4  | -3.3  | 4.5                           | -0.2 | -3.5 |
| South Africa          | 5.0        | 0.9 | -1.0 | -0.5                           | -1.0 | -3.3 | -2.1                            | -0.4 | 0.0  | -14.5                    | -1.5 | 8.9  | 8.8                           | -2.5 | -15.4 | 6.3                           | 1.7  | 0.6  |
| Rest S.S. Africa      | 13.3       | 2.6 | -4.2 | -6.5                           | -1.7 | 2.1  | -2.5                            | -0.6 | 1.1  | -8.2                     | -1.5 | 3.5  | -17.4                         | -6.2 | 2.5   | 13.9                          | 2.6  | -4.8 |
| High-income countries | 3.4        | 0.1 | -1.8 | 1.1                            | 0.7  | 0.1  | -0.8                            | 0.2  | 0.8  | -8.4                     | -1.1 | 4.3  | 9.9                           | 2.0  | -3.9  | 3.4                           | -0.6 | -2.4 |
| Developing countries  | 9.4        | 2.4 | -3.0 | -3.4                           | -1.1 | 1.0  | -1.6                            | -0.5 | 0.6  | -8.7                     | -2.2 | 3.2  | 2.3                           | -2.2 | -4.5  | 13.3                          | 3.4  | -4.8 |
| World                 | 6.7        | 1.3 | -2.4 | -1.3                           | -0.3 | 0.6  | -1.3                            | -0.2 | 0.7  | -8.6                     | -1.8 | 3.6  | 8.3                           | 1.1  | -4.0  | 8.9                           | 1.6  | -3.7 |

The aggregate price of agricultural products on international markets is expected to be higher by 2030 in all but the high productivity case. The most extreme change is for coarse grains (mostly maize), whose price is projected to be 16 percent higher in the low case and 4 percent higher in the medium case (Table 3). Even higher results are expected from some other studies, however. A recent IFPRI study, for example, projects price effects of climate changes by 2050 of between 20 and 50 percent (Nelson *et al.*, 2010).

TABLE 3  
**Effects on agricultural prices in international markets of crop  
and labor productivity changes due to climate change, 2030.  
(Percent deviation from baseline in projected year)**

| Sectors                   | Crop productivity shock |      |      | Unskilled labor productivity shock |      | Medium Crop and -3% unskilled labor productivity shock |
|---------------------------|-------------------------|------|------|------------------------------------|------|--|
|                           | Low                     | Med  | High | -3%                                | -6%  |  |
| Rice                      | 4.5                     | 1.0  | -1.9 | 0.4                                | 0.8  | 1.4  |
| Wheat                     | 6.6                     | -0.3 | -4.9 | 0.1                                | 0.2  | -0.2   |
| Coarse grains             | 15.9                    | 4.3  | -2.3 | 0.1                                | 0.3  | 4.4  |
| Fruit & veg               | 6.8                     | 0.4  | -3.7 | 0.2                                | 0.4  | 0.6  |
| Oilseeds                  | 7.4                     | 0.2  | -4.7 | 0.1                                | 0.2  | 0.3  |
| Sugar                     | 0.8                     | 0.1  | -0.5 | 0.3                                | 0.7  | 0.4  |
| Cotton                    | 9.3                     | 1.1  | -4.4 | 0.0                                | 0.0  | 1.1  |
| Other crops               | 6.7                     | 0.2  | -4.3 | 0.2                                | 0.4  | 0.3  |
| Beef/sheep                | 1.7                     | 0.2  | -0.8 | 0.2                                | 0.5  | 0.5  |
| Pork/chicken              | 1.6                     | 0.1  | -0.9 | 0.2                                | 0.5  | 0.3  |
| Dairy                     | 0.8                     | 0.1  | -0.5 | 0.2                                | 0.4  | 0.3  |
| All agriculture & food    | 4.1                     | 0.4  | -2.0 | 0.2                                | 0.4  | 0.6  |
| Forestry                  | -1.0                    | -0.2 | 0.3  | -0.3                               | -0.6 | -0.5   |
| Coal                      | 0.5                     | 0.2  | 0.1  | -3.1                               | -6.1 | -2.9   |
| Oil                       | -0.5                    | -0.1 | 0.1  | -0.8                               | -1.6 | -0.9   |
| Gas                       | -0.5                    | -0.2 | 0.0  | 0.6                                | 1.2  | 0.4  |
| Minerals nec              | -0.2                    | 0.1  | 0.1  | -0.7                               | -1.4 | -0.7   |
| Fish and processed food   | 1.2                     | 0.2  | -0.5 | 0.3                                | 0.6  | 0.4  |
| Light manufacturing       | -0.1                    | 0.0  | 0.0  | 0.3                                | 0.7  | 0.3  |
| Heavy manufacturing       | -0.3                    | -0.1 | 0.1  | 0.1                                | 0.2  | 0.1  |
| Utilities & construction  | -0.1                    | 0.0  | 0.1  | 0.3                                | 0.6  | 0.3  |
| Electricity, gas distrib. | -0.2                    | 0.0  | 0.1  | 0.0                                | 0.1  | 0.0  |
| Transport                 | -0.3                    | 0.0  | 0.1  | 0.3                                | 0.6  | 0.2  |
| Other services            | -0.4                    | -0.1 | 0.2  | 0.3                                | 0.6  | 0.2  |

The impacts of these price and quantity changes on overall national economic welfare are summarized in Table 4. For the world as a whole, the negative impact in the medium case is for a tiny fall of 0.03 percent of projected real income by 2030. That aggregate conceals larger proportional changes at country level, especially for developing countries, but even so they appear to be very minor (0.1 percent of projected real income for that group, and 0.3 percent for India). These national economic welfare effects come not only from the factor productivity shocks themselves but also from the change in the country's international terms of trade and the impact of producer and consumer responses to them on the resource efficiency costs of distortionary policies such as tariffs and subsidies. The terms of trade effects are non-trivial and for some countries they are larger than (and in some cases opposite in sign to) the direct crop productivity effect.

These projected changes from the assumed crop productivity effects of climate change are just one of the influences expected from temperature and humidity changes over the coming decades. We turn now to an additional expected influence, namely the debilitating impact on unskilled workers in developing countries which van der Mensbrugghe and Roson (2010) indicate could be far more important.

**TABLE 4**  
**Effects on national economic welfare of crop yield and labor productivity changes.**  
**(2004 US\$ million, equivalent variation of income from baseline in 2030)**

| Regions               | Crop productivity shock |        |       | Unskilled labor productivity shock |         | Medium crop and -3% unskilled labor productivity shock |             |
|-----------------------|-------------------------|--------|-------|------------------------------------|---------|--|-------------|
|                       | Low                     | Med    | High  | -3%                                | -6%     | in US \$m  | as % of GDP |
| USA                   | 195                     | 647    | 371   | -1642                              | -3239   | -1019  | -0.01       |
| Canada                | 431                     | 58     | -193  | -404                               | -799    | -351   | -0.03       |
| EU27 and EFTA         | -7002                   | -555   | 5054  | -3426                              | -6846   | -3948  | -0.03       |
| Russia                | -1643                   | -100   | 925   | -2208                              | -4401   | -2302  | -0.23       |
| Rest of EE/C Asia     | 351                     | 897    | 1213  | -645                               | -1291   | 236  | 0.02        |
| Australia             | 1612                    | 375    | -260  | -1528                              | -2994   | -1170  | -0.11       |
| New Zealand           | 436                     | 85     | -137  | -4                                 | -6      | 80   | 0.05        |
| Japan                 | -3574                   | -464   | 1709  | 110                                | 200     | -340   | -0.01       |
| Korea                 | -1074                   | 7      | 823   | -11829                             | -23907  | -11827   | -0.80       |
| HK/Sing/Taiwan        | -788                    | -27    | 661   | -8254                              | -16699  | -8282  | -0.70       |
| China                 | -30524                  | -9825  | 4921  | -37424                             | -76113  | -46932   | -1.03       |
| Indonesia             | -1182                   | -311   | 3927  | -5070                              | -10232  | -5373  | -0.91       |
| Malaysia              | -487                    | -85    | 273   | -2724                              | -5503   | -2806  | -0.92       |
| Thailand              | -1261                   | -277   | 455   | 290                                | 582     | 12   | 0.00        |
| Rest of East Asia     | -1869                   | -484   | 577   | -3179                              | -6428   | -3653  | -0.93       |
| India                 | -22411                  | -5812  | 7094  | -11972                             | -24330  | -17653   | -1.05       |
| Rest of S. Asia       | -5172                   | -1060  | 2033  | -3460                              | -7005   | -4500  | -1.05       |
| Argentina             | 1072                    | -27    | -531  | -88                                | -175    | -118   | -0.05       |
| Brazil                | 1061                    | -11    | -641  | -10189                             | -20562  | -10204   | -0.97       |
| Rest of L. America    | -5331                   | -1057  | 1367  | -22026                             | -44464  | -23057   | -0.91       |
| M. East/N. Africa     | -3560                   | -253   | 2019  | -14258                             | -28798  | -14503   | -0.74       |
| South Africa          | 221                     | 22     | -60   | -392                               | -761    | -374   | -0.11       |
| Rest of SS Africa     | -6447                   | -1398  | 1688  | -6226                              | -12591  | -7576  | -1.17       |
| High-income countries | -9194                   | 943    | 8682  | -9748                              | -19377  | -8814  | -0.02       |
| Developing countries  | -77751                  | -20598 | 24606 | -136802                            | -276986 | -156846  | -0.88       |
| World                 | -86945                  | -19657 | 33289 | -146550                            | -296363 | -165659  | -0.28       |

Source: Authors' simulations.

### 3.2 Effects on unskilled labor productivity

Since temperatures and humidity are expected to rise from already very high levels in most tropical developing countries, the productivity of workers in those countries (especially those involved in manual farm work) is expected to fall in the absence of counter measures (Kjellstrom *et al.*, 2009). By contrast, in high-income countries the temperature rises will generally be from cool or at most moderate rather than from high current levels.

We follow van der Mensbrugge and Roson (2010) and rely on Kjellstrom *et al.*, (2009) in attempting to simulate the effect of climate change on all unskilled workers in tropical and desertified developing countries, by implementing a shock to unskilled labor productivity in both the agricultural and non-farm sectors. Kjellstrom *et al.* project the magnitude of that shock by the 2020s under the IPCC's A2 scenario as between 3 and 7.5 percent for Sub-Saharan Africa, 4.9 percent for South Asia, and 7.5 percent for Central America. To err on the side of caution, we assume a 3 percent decline in unskilled labor productivity by 2030 in all developing countries other than the relatively temperate Argentina, Korea, South Africa and Taiwan and the most affluent (Hong Kong and Singapore). To test the linearity of the key effects of such a shock, we also provide results for a 6 percent shock.

It turns out that the effects of this shock on agricultural markets are highly linear, which allows the reader to assess the impacts of their own alternative-sized labor shock from climate change simply by factoring up or down the numbers presented below.

For developing countries as a group, the generally negative impact of this shock on the volume of agricultural production is somewhat larger than the effect of the medium crop productivity shock alone. There is an even larger difference in the decline in consumption of farm products (Table 5), so the impact on global agricultural trade is slightly muted. The developing country share of global exports (imports) of farm products may still be expected to be lower (higher) by 2030 than in the absence of the two core productivity shocks (the medium crop one and the -3 percent labor one), but the change will be greater (smaller) than if only crop productivity was affected.

The welfare effects are negative and considerably bigger than in the yield shock scenarios, because the shock to unskilled labor is non-trivial and applies to all sectors of developing countries, not just to agriculture. Globally these effects amount to a loss of \$147 billion per year by 2030 for a -3 percent labor shock (and \$296 billion, or roughly double, for a -6 percent shock), which compares to a global loss of just \$20 billion for the medium crop productivity shock. Almost all of the global welfare loss is felt by developing countries (Table 4).

The self-sufficiency numbers shown in Table 1 refer to all agricultural products, and so do not necessarily relate closely to concerns about staple food import dependence. A better indicator of the latter is grain self-sufficiency, results for which are reported in Table 6. They too seem to be affected very little by the climate change shocks considered here. Even when disaggregated into individual crops such as rice and wheat, the scenarios differ little in their self sufficiency ratios for most develo-



**TABLE 5**  
**Effects of labor productivity and crop yield changes due to climate change on agricultural consumption and agricultural value added, 2030 (percent)**

| Regions                | Unskilled labor productivity shock |                          |                                 |                          |                                 |                          | Effects of crop yield shocks and a 3% decrease in unskilled labor productivity |                          |                                 |                          |                          |  |
|------------------------|------------------------------------|--------------------------|---------------------------------|--------------------------|---------------------------------|--------------------------|--|--------------------------|---------------------------------|--------------------------|--------------------------|--|
|                        | 3% decrease                        |                          | 6% decrease                     |                          | a) Low Productivity             |                          | b) Medium Productivity   |                          | c) High Productivity            |                          | Agricultural value added |  |
|                        | Agricultural consumption volume    | Agricultural value added | Agricultural consumption volume | Agricultural value added | Agricultural consumption volume | Agricultural value added | Agricultural consumption volume  | Agricultural value added | Agricultural consumption volume | Agricultural value added |                          |  |
| USA                    | 0.1                                | -0.1                     | 0.0                             | -0.2                     | -2.2                            | -8.5                     | -0.4   | -1.7                     | 0.9                             | 3.8                      |                          |  |
| Canada                 | -0.1                               | -0.1                     | 0.0                             | -0.2                     | -1.5                            | -9.3                     | 0.2  | -2.3                     | 1.4                             | 3.6                      |                          |  |
| EU27 and EFTA          | 0.0                                | -0.2                     | 0.0                             | -0.5                     | 0.4                             | -9.2                     | 0.3  | -0.9                     | 0.0                             | 5.0                      |                          |  |
| Russia                 | -0.2                               | -0.1                     | -0.1                            | -0.3                     | -1.0                            | -4.6                     | 0.1  | -0.8                     | 0.9                             | 1.9                      |                          |  |
| Rest of Europe/C. Asia | -0.1                               | -0.1                     | 0.0                             | -0.2                     | -1.2                            | -7.5                     | 0.3  | -1.0                     | 1.2                             | 4.0                      |                          |  |
| Australia              | 0.1                                | -0.3                     | 0.0                             | -0.6                     | -2.0                            | -9.3                     | -0.1   | -2.4                     | 1.7                             | 2.7                      |                          |  |
| New Zealand            | -0.2                               | -0.3                     | -0.1                            | -0.7                     | 0.9                             | -9.1                     | 0.4  | -2.2                     | -0.3                            | 3.4                      |                          |  |
| Japan                  | 0.1                                | -0.2                     | 0.0                             | -0.4                     | 1.4                             | -6.6                     | 0.4  | -0.3                     | -0.3                            | 4.2                      |                          |  |
| Korea                  | -1.2                               | 0.1                      | -0.6                            | 0.3                      | 1.1                             | -6.4                     | 0.9  | 0.2                      | 0.8                             | 5.8                      |                          |  |
| HongKong/Sing/Taiwan   | -1.3                               | 0.4                      | -0.6                            | 0.7                      | 1.5                             | -8.6                     | -0.1   | -1.7                     | -0.9                            | 4.2                      |                          |  |
| China                  | -1.9                               | 0.3                      | -0.9                            | 0.6                      | -2.6                            | -11.6                    | -1.7   | -4.1                     | -0.9                            | 2.1                      |                          |  |
| Indonesia              | -1.5                               | 0.6                      | -0.7                            | 1.2                      | -0.3                            | -5.1                     | -0.9   | -0.2                     | 1.4                             | 6.4                      |                          |  |

TABLE 5 (continued)  
**Effects of labor productivity and crop yield changes due to climate change on agricultural consumption and agricultural value added, 2030 (percent)**

| Regions               | Unskilled labor productivity shock |                                      |                                 | Effects of crop yield shocks and a 3% decrease in unskilled labor productivity |                                      |                                 |                                      |                                      |                                 |     |
|-----------------------|------------------------------------|--------------------------------------|---------------------------------|--|--------------------------------------|---------------------------------|--------------------------------------|--------------------------------------|---------------------------------|-----|
|                       | 3% decrease                        | 6% decrease                          | 3% decrease                     | a) Low Productivity  | b) Medium Productivity               | c) High Productivity            | a) Low Productivity                  | b) Medium Productivity               | c) High Productivity            |     |
|                       | Agricultural consumption volume    | Agricultural consumption value added | Agricultural consumption volume | Agricultural consumption volume  | Agricultural consumption value added | Agricultural consumption volume | Agricultural consumption value added | Agricultural consumption value added | Agricultural consumption volume |     |
| Rest of East Asia     | -1.4                               | 0.3                                  | -0.7                            | 0.7  | -2.1                                 | -4.7                            | -1.2                                 | -0.5                                 | -0.3                            | 3.3 |
| India                 | -1.3                               | 0.5                                  | -0.6                            | 1.0  | -3.6                                 | -7.9                            | -1.5                                 | -1.6                                 | 0.4                             | 4.2 |
| Rest of South Asia    | -1.4                               | 0.5                                  | -0.7                            | 1.0  | -1.8                                 | -3.7                            | -1.0                                 | 0.0                                  | -0.4                            | 3.0 |
| Argentina             | 0.3                                | -0.1                                 | 0.2                             | -0.2   | -7.9                                 | -8.3                            | -0.9                                 | -0.2                                 | 5.0                             | 4.7 |
| Brazil                | -1.5                               | 0.4                                  | -0.7                            | 0.9  | -3.8                                 | -6.8                            | -1.1                                 | 0.2                                  | 0.7                             | 5.5 |
| Rest of Latin America | -1.5                               | 0.5                                  | -0.8                            | 0.9  | -1.9                                 | -6.7                            | -1.0                                 | -0.4                                 | -0.6                            | 3.8 |
| Middle East/N. Africa | -1.4                               | 0.4                                  | -0.7                            | 0.8  | -0.8                                 | -5.6                            | -0.5                                 | -0.3                                 | -0.4                            | 3.8 |
| South Africa          | 0.0                                | -0.2                                 | 0.0                             | -0.4   | -2.1                                 | -14.4                           | -0.5                                 | -1.6                                 | 0.0                             | 8.5 |
| Rest SSAfrica         | -1.8                               | 0.7                                  | -0.9                            | 1.4  | -3.4                                 | -7.5                            | -1.5                                 | -0.8                                 | 0.1                             | 4.2 |
| High-income countries | 0.1                                | -0.2                                 | 0.1                             | -0.3   | -0.7                                 | -8.4                            | 0.3                                  | -1.2                                 | 0.9                             | 4.1 |
| Developing countries  | -1.5                               | 0.4                                  | -0.8                            | 0.8  | -2.3                                 | -8.2                            | -1.2                                 | -1.8                                 | -0.2                            | 3.6 |
| World                 | -0.8                               | 0.2                                  | -0.4                            | 0.4  | -1.7                                 | -8.3                            | -0.6                                 | -1.6                                 | 0.2                             | 3.8 |

Source: Authors' simulations.

ping countries. That does not mean, however, that food security is unaffected. This is because when food production falls in developing countries so too does aggregate income, all else being equal; and thus less food can be afforded, so consumption falls as well – as shown in Table 2.

**TABLE 6**  
**Grain self sufficiency, 2004 and 2030 baseline and after crop and labor productivity losses from climate change. (Production as a percentage of domestic consumption)**

| Regions               | Baseline |      | With climate change            |  |
|-----------------------|----------|------|--------------------------------|--|
|                       | 2004     | 2030 | Medium Crop productivity shock | Medium Crop and -3% unskilled labor productivity shock |
| USA                   | 163      | 183  | 178                            | 178  |
| Canada                | 280      | 357  | 360                            | 359  |
| EU27 and EFTA         | 94       | 107  | 109                            | 109  |
| Russia                | 99       | 101  | 102                            | 102  |
| Rest of EE/C Asia     | 95       | 94   | 95                             | 95   |
| Australia             | 334      | 401  | 415                            | 414  |
| New Zealand           | 75       | 81   | 81                             | 81   |
| Japan                 | 83       | 81   | 81                             | 81   |
| Korea                 | 83       | 79   | 80                             | 80   |
| HK/Sing/Taiwan        | 64       | 61   | 63                             | 63   |
| China                 | 98       | 95   | 95                             | 95   |
| Indonesia             | 94       | 92   | 91                             | 91   |
| Malaysia              | 43       | 36   | 36                             | 36   |
| Thailand              | 131      | 115  | 114                            | 114  |
| Rest of East Asia     | 98       | 90   | 90                             | 90   |
| India                 | 103      | 102  | 102                            | 102  |
| Rest of South Asia    | 98       | 92   | 92                             | 92   |
| Argentina             | 378      | 447  | 433                            | 429  |
| Brazil                | 99       | 100  | 99                             | 99   |
| Rest of L America     | 80       | 77   | 77                             | 77   |
| M. East/N. Africa     | 64       | 62   | 62                             | 62   |
| South Africa          | 84       | 110  | 111                            | 110  |
| Rest of SS Africa     | 77       | 78   | 79                             | 79   |
| High-income countries | 104      | 118  | 119                            | 119  |
| Developing countries  | 93       | 90   | 90                             | 90   |
| WORLD                 | 100      | 100  | 100                            | 100  |

Source: Authors' simulations.

### ***3.3. Combined effects of crop and unskilled labor productivity shocks***

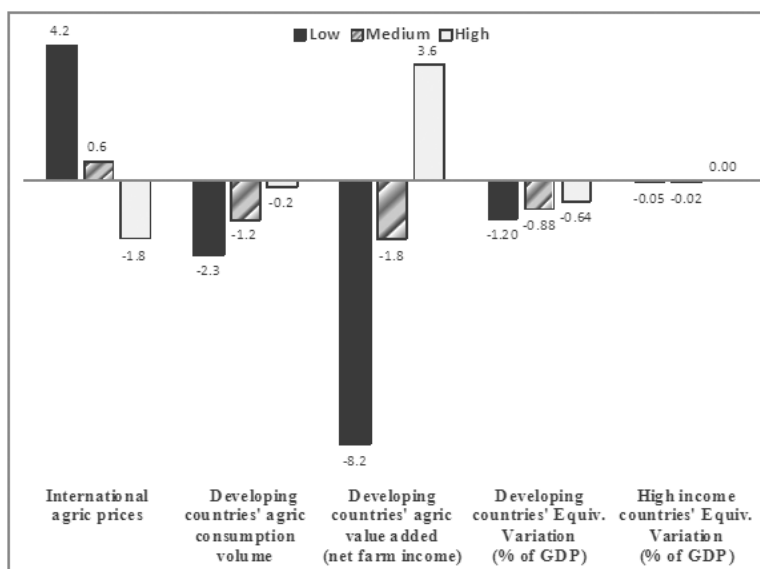
When those two sets of shocks are combined, the effects are linear for most but not all indicators. That is, the proportional changes in an indicator can often be simply added. To illustrate this, we show on the right-hand side of Tables 1, 3 and 4-6 the combined effect of the medium crop shock and the -3 percent labor shock.

Perhaps the most important of those combined effects are those summarized in Figure 2, which shows the three crop scenarios together with the -3 percent labor scenario. International agricultural prices could rise by as much as 4.2 percent, or fall by 1.8 percent, but in the medium case would rise by only 0.6 percent. This affects countries' terms of trade (and hence incomes) in different ways, depending on their net exports of the various products. The volume of consumption of farm products in developing countries falls in all cases except the high crop productivity case (where the net effect is virtually zero but see Table 5 for national details), which is not good news for food security in those countries. Part of the reason for lower consumption is the fall in net farm incomes in those countries of 1.8 percent in the medium case and 8 percent in the low crop productivity case: only in the high crop productivity case does agricultural value added rise in developing countries as a group (by 3.6 percent).

Overall economic welfare falls for developing countries in all three cases illustrated in Figure 2, by between 0.6 and 1.2 percent of real income (see last columns of Table 4 for national details). By contrast, high-income countries may be expected to be affected far less – and not to lose at all in the high crop productivity case. To put these welfare effects in perspective, we ran another simulation in which import tariffs on all goods and all agricultural subsidies were eliminated in 2030 (having left these distortions unchanged in the core simulation from 2004 to 2030): the welfare effects of such an extreme policy reform would be roughly enough to offset the effects on developing country welfare of the shocks summarized in Figure 2 (a 1.0 percent gain to developing countries' welfare and a 0.5 percent gain globally).

FIGURE 2

Some effects of a 3% decrease in unskilled labor productivity and low, medium and high crop yield productivity shocks on international agricultural prices, consumption of farm products, net farm incomes, and national economic welfare, 2030



Source: Authors' simulations.

#### 4. Caveats

The above analysis is partial in several respects. First, it examines the effects of just two of the many sets of impacts that climate changes are expected to have on the global economy. The study by van der Mensbrugge and Roson (2010), for example, also takes into account the effects on energy demand, water availability, tourism and sea level rise. Not surprisingly, therefore, they get a higher impact of climate change on global economic welfare, of -1.8 percent by 2050. Incidentally, they also compare that with their estimate of the welfare effect of freeing trade policies globally by 2050, which is +0.9 percent according to their global model.

Second, we analyze the effects only to 2030. The effects of climate change are expected to become more severe in subsequent decades, however, so in the absence of mitigation they could become much greater in the remaining two-thirds of the 21<sup>st</sup> century than presented above for 2030. This is supported by the dynamic simulations to 2100 generated by Roson and van der Mensbrugge (2010).

Third, the nature of each simulated shock obviously determines the size of its effects. The medium crop productivity shocks that we model mostly help farm output in higher latitudes over the next two decades and hurt it in many parts of the tropics. The net effect in our case is virtually no aggregate global agricultural output change by 2030: between 0.6 and -1.3 percent. By contrast, van der Mensbrugghe and Roson (2010) assume larger positive shocks in temperate farm regions and smaller negative shocks in the tropics and so project a small net global economic welfare gain from changes in crop productivity. They also adopt a damage function approach to capture the effect of temperature rise on labor productivity (based on such studies as Kjellstrom *et al.*, 2009), in contrast to our simpler homogenous exogenous labor shock for tropical countries. More sophisticated damage functions with respect to crop productivity also could be adopted, especially now that the GTAP database is being enhanced to enable better modelling of land use changes (see Hertel, 2010) and of the impact of changes in water availability in irrigated versus non-irrigated areas (see Calzadilla *et al.*, 2010). Given the great uncertainty associated with the magnitude – and in some cases even the sign of potential shocks, our results simply show some ranges, and leave it to future analytical work to include likelihood probabilities and explore complementarities in climatic and agent-based modeling.<sup>9</sup> An important feature of the GTAP economic model, however, is that many of the key results of a shock tend to be linear, in the sense that if the shock was 10 percent greater, the effects also would be about one-tenth greater.

Fourth, the standard comparative static version of the GTAP model used in the present study does not capture the complexity of energy markets. In particular, there are no biofuels markets, so the linkage that has recently emerged between biofuel crops and fossil fuels is not built into the projections. Modellers have certainly begun incorporating elements of that linkage (see, e.g., Golub *et al.*, 2010, Hertel and Beckman, 2011), but there is still the challenge of anticipating how governments might alter biofuel subsidies and mandates over the next 20 years (given the newness of many of those policies and the uncertainty still surrounding the net environmental benefits of such support for biofuel producers).

Fifth, as mentioned at the outset of this paper, the debilitating impact on welfare and food security from extreme weather events is not captured by the comparative static model that we have employed. More frequent extreme weather events such as floods, droughts, frosts, hail and wind can affect all sectors but are especially damaging to farm incomes whenever and wherever they strike – and not linearly, according to a new study of weather-driven maize yield variability in Africa (Lobell *et al.*, 2011). Analysis of the welfare effects of climate change ought to recognise these income distributional consequences, particularly on the poor. Economy-wide modelers are only now beginning to focus on these possible poverty consequences (see, e.g., Hertel *et al.*, 2010), and to make their models stochastic (e.g., Hertel and Beckman, 2011).

<sup>9</sup> A forthcoming study by Scealy *et al.* (2011) draws on this information in an integrated assessment modeling exercise that estimates the range of grain self sufficiency ratios expected for each country in 2050. Even when projecting over four decades their self-sufficiency ranges are rather narrow, so they would be even narrower in just two decades' time

What is also required is to recognize that if international food price fluctuations increase because of more extreme weather events, so too will the welfare costs of government efforts to use trade measures to insulate their domestic markets from border price fluctuations (Martin and Anderson, 2012).

Finally, we assume throughout that policies are unchanged through the projection period, and in particular that no new mitigation strategies or technologies are adopted to slow climate change; nor are trade, subsidy or tax policies changed. This is an obvious area for extending the analysis. If a carbon tax was gradually phased in by all countries, for example, climate change would presumably eventually slow down. However, this would have little impact before 2030, and meanwhile that set of carbon taxes would alter the international competitiveness of various industries around the world. Carbon-intensive industrial sectors such as China's would be likely to lose their comparative advantage, thereby making China's farmers more competitive. And China might not be able to avoid that outcome simply by not adopting a carbon tax, because in that case other countries that have adopted such a tax may impose border tax adjustments on goods imported from China (Mattoo *et al.*, 2009a,b). One effect of pricing greenhouse gases, however, is that it would provide landowners with mitigation opportunities that would further alter the markets for and national comparative advantages in farm products (Golub *et al.*, 2009). In particular, if this leads to land being taken out of agriculture for re-forestation to sequester carbon, food prices could potentially become much higher.

## 5. Implications for food security and farm policies

Given the above caveats, it would of course be premature to draw implications for agricultural, trade and climate change policies from the empirical results presented in this paper. The results are presented simply to illustrate some of the ways in which one or two of the shocks expected from on-going climate change can affect agricultural markets directly or indirectly, and thereby also economic welfare. When those effects are expected by 2030 to be positive in some countries and negative in others, as in the case of farm products, the net impact on world food prices and hence real incomes of both farm and nonfarm households in the decades ahead can only be determined with the use of a global economy-wide model projected forward.

In terms of global food security, our findings indicate that the impacts of climate change are less pessimistic than some earlier studies. One of the most widely cited is by Cline (2007), who predicts that by the 2080s, even with carbon fertilization, agricultural output will be 8 percent lower in developing countries, 8 percent higher in high-income countries, and 3 percent lower globally. These larger magnitudes refer to five decades later than the above projections though, so they may not be inconsistent with our findings for 2030 if indeed it is not until the middle half of the present century that the effects of climate change on agriculture accelerate. A more recent study by Nelson *et al.*, (2010, Table 2.2) suggests that climate change will cause real international prices of grain to be between one-fifth and one-third higher in 2050 than



they would be without the climate changes expected in the first half of this century. Again those results for two decades later may not be inconsistent with our findings for 2030.<sup>10</sup> And even if these larger results turn out to be excessive, the policy responses proposed by Nelson *et al.* (2010) to deal with the possible food security concerns that they raise may well be wise precautionary measures. This is especially the case for expanding agricultural R&D, since there is in any case considerable underinvestment in that activity in most developing countries (Alston *et al.*, 2010). If such investments reduce the perceived need by governments to alter border measures to maintain food self sufficiency or avoid transmitting fluctuations in international prices to their domestic market, it will be doubly beneficial to food security in the rest of the world.

## References

- Alston, J.M., Babcock, B.A. and Pardey, P.G. (Eds.) (2010). *The shifting patterns of agricultural production and productivity worldwide*. The Midwest Agribusiness Trade Research and Information Center, Iowa State University, Ames.
- Anderson, K. (2009). "Distorted agricultural incentives and economic development: Asia's experience". *The World Economy*, 32(3): 351-84.
- Anderson, K., Dimaranan, B., Hertel, T. and Martin, W. (1997). "Economic growth and policy reforms in the APEC region: Trade and welfare implications by 2005". *Asia-Pacific Economic Review*, 3(1): 1-18.
- Anderson, K., Kurzweil, M., Martin, W., Sandri, D. and Valenzuela, E. (2008). "Measuring distortions to agricultural incentives, revisited". *World Trade Review*, 7(4): 1-30.
- Anderson, K. and Valenzuela, E. (2008). *Estimates of global distortions to agricultural incentives, 1955 to 2007*. World Bank, Washington DC, October, accessible at [www.worldbank.org/agdistortions](http://www.worldbank.org/agdistortions).
- Armington, P. (1969). "A theory of demand for products distinguished by place of production". *IMF Staff Papers*, 16: 159-78.
- BP (2010). *BP Statistical Review of World Energy*. British Petroleum, London.
- Calzadilla, A., Rehdanz, K., Betts, R., Falloon, P., Wiltshire, A. and Tol, R.S.J. (2010). "Climate change impacts on global agriculture". Paper presented at the 13<sup>th</sup> Global Economic Analysis conference, Penang, 9-11 June.
- Cline, W.R. (2007). *Global warming and agriculture: Impact assessment by country*. Centre for Global Development and Peterson Institute for International Economics, Washington DC.

<sup>10</sup> The main reason for the difference in results between the study by Nelson *et al.* and the present one is that they assume somewhat larger crop yield declines in developing countries but declines also in high-income countries by 2050 – in contrast to our study, which assumes some yield improvements up to 2030 in high-income countries, following Hertel *et al.*, (2010) and Reilly *et al.*, (2007). This latter improvement in yields by 2030 may well be reversed by further climate change in subsequent decades.

- Deininger, K. and Byerlee, D. (2011). *Rising global interest in farmland: Can it yield sustainable and equitable benefits?*. World Bank, Washington DC.
- Duval, R. and de la Maisonneuve, C. (2009). "Long-term GDP growth framework and scenarios for the world economy". Annex 1 in *The Economics of Climate Change Mitigation: Policies and Options for Global Action Beyond 201*. OECD, Paris.
- Fouré, J., Benassy-Quéré, A. and Fontagné, L. (2010). *The world economy in 2050: A tentative picture*. Working Paper No. 2010-27, CEPII, Paris, December ([www.cepii.org.fr](http://www.cepii.org.fr)).
- Garnaut, R. (2008). *The Garnaut Climate Change Review*. Cambridge University Press, Melbourne.
- Golub, A., Hertel, T.W., Lee, H., Rose, S. and Sohngen, B. (2009). "The opportunity cost of land use and the global potential for greenhouse gas mitigation in agriculture and forestry". *Resource and Energy Economics*, 31(4): 299-319.
- Golub, A., Hertel, T.W., Taheripour, F. and Tyner, W.E. (2010). "Modeling biofuels policies in general equilibrium: Insights, pitfalls, and opportunities". In Beladi, H. and Choi, E.K. (Eds.): *New Developments in Computable General Equilibrium Analysis for Trade Policy*. Emerald Group Publishing, London: 153-187.
- Gornall, J., Betts, R., Burke, E., Clark, R., Camp, J., Willett, K. and Wiltshire, A. (2010). "Implications of climate change for agricultural productivity in the early twenty-first century". *Philosophical Transactions of the Royal Society B*, 365 (1554): 2973-89.
- Gunasekera, D., Kim, Y., Tulloh, C. and Ford, M. (2007). "Climate change: Impacts on Australian agriculture". *Australian Commodities*, 14(4): 657-76.
- Hertel, T.W. (Ed.) (1997). *Global Trade Analysis: Modeling and Applications*. Cambridge University Press, Cambridge and New York.
- Hertel, T.W. (2010). "The global supply and demand for agricultural land in 2050: A perfect storm in the making?". *American Journal of Agricultural Economics* (forthcoming).
- Hertel, T.W. and Beckman, J. (2011). *Commodity price volatility in the biofuel era: An examination of the linkage between energy and agricultural markets*. NBER Working Paper No. 16824, Cambridge MA.
- Hertel, T.W., Burke, M.B. and Lobell, D.B. (2010). "The poverty implications of climate-induced crop yield changes by 2030". *Global Environmental Change*, 20(4): 577-85.
- Hertel, T.W., Hummels, D., Ivanic, M. and Keeney, R. (2007). "How confident can we be in CGE-based assessments of free trade agreements?". *Economic Modelling*, 24(4): 611-35.
- Hertel, T.W. and Rosch, S.D. (2010). "Climate change, agriculture, and poverty". *Applied Economic Policy and Perspectives*, 32(3): 355-85.

- Kjellstrom, T., Kovats, R.S., Lloyd, S.J., Holt, T. and Tol, R.S.J. (2009). "The direct impact of climate change on regional labor productivity". *Archives of Environmental and Occupational Health*, 64(4): 217-27.
- Lobell, D.B., Banziger, M., Magorokosho, C. and Vivek, B. (2011). "Nonlinear heat effects on African maize as evidenced by historical yield trials". *Nature Climate Change*, 1: 42-45.
- Lobell, D.B. and Burke, M.B. (2008). "Why are agricultural impacts of climate change so uncertain? The importance of temperature relative to precipitation". *Environmental Research Letters*, 3(3), July-September.
- Martin, W. and Anderson, K. (2012). "Export restrictions and price insulation during commodity price booms". *American Journal of Agricultural Economics*, 94(1), January (forthcoming).
- Martin, W. and Mitra, D. (2001). "Productivity growth and convergence in agriculture and manufacturing". *Economic Development and Cultural Change*, 49(2): 403-22.
- Mattoo, A., Subramanian, A., van der Mensbrugghe, D. and He, J. (2009a). *Can global de-carbonization inhibit developing country industrialization?*. Policy Research Working Paper 5121, World Bank, Washington DC.
- Mattoo, A., Subramanian, A., van der Mensbrugghe, D. and He, J. (2009b). *Reconciling climate change and trade policy*. Policy Research Working Paper 5123, World Bank, Washington DC.
- Mendelsohn, R. (2009). "The impact of climate change on agriculture in developing countries". *Journal of Natural Resources Policy Research*, 1(1): 5-19.
- Narayanan, G.B. and Walmsley, T.W. (Eds.) (2008). *Global Trade, Assistance, and Production: The GTAP 7 Data Base*. Center for Global Trade Analysis, Purdue University, West Lafayette IN. Downloadable at [www.gtap.org](http://www.gtap.org).
- Nelson, G.C., Rosegrant, M.W., Palazzo, A., Gray, I., Ingersoll, C., Robertson, R., Tokgoz, S., Zhu, T., Sulser, T.B., Ringler, C., Msangi, S. and You, L. (2010). *Food Security, Farming, and Climate Change to 2050: Scenarios, Results, Policy Options*. International Food Policy Research Institute, Washington DC.
- Reilly, J., Palsev, S., Felzer, B., Wang, X., Kicklighter, D., Melillo, J., Preinn, R., Sarofim, M., Sokolov, A. and Wang, C. (2007). "Global economic effects of changes in crops, pasture, and forests due to changing climate, carbon dioxide, and ozone". *Energy Policy*, 35(11): 5370-83.
- Roson, R. and van der Mensbrugghe, D. (2010). *Climate change and economic growth: Impacts and interactions*. Mimeo, World Bank, Washington DC.
- Scealy, R., Newth, D., Gunasekera, D. and Finnigan, J. (2011). "Potential effects of variation in agricultural sector responses to climate change: An integrated assessment". Contributed paper for the *Global Economic Analysis conference*, Venice, 15-17 June.
- Schultz, T.W. (1951). "The declining economic importance of agricultural land". *Economic Journal*, 59(244): 725-40.

- Valenzuela, E. and Anderson, K. (2008). *Alternative agricultural price distortions for CGE analysis of developing countries, 2004 and 1980-84*. Research Memorandum No. 13, Center for Global Trade Analysis, Purdue University, West Lafayette, December, at [www.gtap.agecon.purdue.edu/resources/res\\_display.asp?RecordID=2925](http://www.gtap.agecon.purdue.edu/resources/res_display.asp?RecordID=2925).
- Valenzuela, E. and Anderson, K. (2011). *Projecting the world economy to 2050: Agriculture in the economy-wide GTAP model*. Discussion Paper 1101, Centre for International Economic Studies, University of Adelaide.
- Van der Mensbrugge, D. and Roson, R. (2010). "Climate, trade and development". Paper presented at the 13<sup>th</sup> *Global Economic Analysis conference*, Penang, 9-11 June.

## Annex

TABLE A1  
**Aggregations of regions<sup>a</sup> in the GTAP model**

| Regions-Aggregation                       | Comprising GTAP regions   |
|---|---|
| 1 USA                                     | United States of America; Rest of North America   |
| 2 Canada                                  | Canada  |
| 3 EU27 and EFTA                           | Austria; Belgium; Cyprus; Czech Republic; Denmark; Estonia; Finland; France; Germany; Greece; Hungary; Ireland; Italy; Latvia; Lithuania; Luxembourg; Malta; Netherlands; Poland; Portugal; Slovakia; Slovenia; Spain; Sweden; United Kingdom; Switzerland; Norway; Rest of EFTA; Bulgaria; Romania |
| 4 Russia                                  | Russian Federation  |
| 5 Rest of Eastern Europe and Central Asia | Albania; Belarus; Croatia; Ukraine; Rest of Eastern Europe; Rest of Europe; Kazakhstan; Kyrgyzstan; Rest of Former Soviet Union; Armenia; Azerbaijan; Georgia; Iran Islamic Republic of; Turkey   |
| 6 Australia                               | Australia   |
| 7 New Zealand                             | New Zealand   |
| 8 Japan                                   | Japan   |
| 9 Korea                                   | Korea   |
| 10 Hong Kong, Singapore, and Taiwan       | Hong Kong; Taiwan; Singapore  |
| 11 China                                  | China   |
| 12 Indonesia                              | Indonesia   |
| 13 Malaysia                               | Malaysia  |
| 14 Thailand                               | Thailand  |
| 15 Rest of East Asia                      | Cambodia; Lao People's Democratic Rep.; Myanmar; Philippines; Viet Nam; Rest of Southeast Asia, Rest of Oceania; Rest of East Asia  |
| 16 India                                  | India   |
| 17 Rest of South Asia                     | Bangladesh; Pakistan; Sri Lanka; Rest of South Asia   |
| 18 Argentina                              | Argentina   |
| 19 Brazil                                 | Brazil  |
| 20 Rest of Latin America                  | Mexico; Bolivia; Chile; Colombia; Ecuador; Paraguay; Peru; Uruguay; Venezuela; Rest of South America; Costa Rica; Guatemala; Nicaragua; Panama; Rest of Central America; Caribbean  |
| 21 Middle East and North Africa           | Rest of Western Asia; Egypt; Morocco; Tunisia; Rest of North Africa   |
| 22 South Africa                           | South Africa  |
| 23 Rest of Sub-Saharan Africa             | Nigeria; Senegal; Rest of Western Africa; Central Africa; South Central Africa; Ethiopia; Madagascar; Malawi; Mauritius; Mozambique; Tanzania; Uganda; Zambia; Zimbabwe; Rest of Eastern Africa; Botswana; Rest of Southern African Customs Union   |

<sup>a</sup> Regions 1 to 8 are categorized in this paper as High-income Countries, the rest (regions 9 to 23) as Developing Countries. Russia and the rest of Eastern Europe and Central Asia are included in the first group because they share a relatively cool climate and have the same expected changes in crop yields as Western Europe to 2030.

Source: Authors' aggregation derived from GTAP database ([www.gtap.org](http://www.gtap.org)).

TABLE A2  
**Aggregations of sectors in the GTAP model**

| Sectors-Aggregation                 | Comprising GTAP sectors   |
|-------------------------------------|---|
| 1 Rice                              | Paddy rice; Processed rice  |
| 2 Wheat                             | Wheat   |
| 3 Coarse grains                     | Cereal grains nec   |
| 4 Fruit & veg                       | Vegetables, fruit, nuts   |
| 5 Oilseeds                          | Oil seeds, Vegetable oils and fats  |
| 6 Sugar                             | Sugar cane, sugar beet; Sugar   |
| 7 Cotton                            | Plant-based fibers  |
| 8 Other crops                       | Crops nec   |
| 9 Cattle/sheep products             | Cattle,sheep,goats,horses; Meat of cattle, sheep, goats, horses; Wool, silk-worm cocoons  |
| 10 Pigs/chickens products           | Animal products nec; Meat products nec  |
| 11 Dairy                            | Raw milk; Dairy products  |
| 12 Forestry                         | Forestry  |
| 13 Coal                             | Coal  |
| 14 Oil                              | Oil   |
| 15 Gas                              | Gas   |
| 16 Minerals nec                     | Minerals nec  |
| 17 Fish and processed food          | Fishing; Food products nec; Beverages and tobacco products  |
| 18 Light manufacturing              | Textiles; Wearing apparel; Leather products, Wood products; Paper products, publishing; Metal products; Motor vehicles and parts; Transport equipment nec; Manufactures nec |
| 19 Heavy manufacturing              | Petroleum, coal products; Chemical,rubber,plastic prods; Mineral products nec; Ferrous metals; Metals nec; Electronic equipment; Machinery and equipment nec                |
| 20 Utilities and construction       | Water; Construction; Trade  |
| 21 Electricity and gas distribution | Electricity; Gas manufacture, distribution  |
| 22 Transport                        | Transport nec; Sea transport; Air transport   |
| 23 Other services                   | Communication; Financial services nec; Insurance; Business services nec; Recreation and other services; PubAdmin/Defence/Health/Education; Dwellings                        |

Source: Authors' aggregation derived from GTAP database ([www.gtap.org](http://www.gtap.org)).

TABLE A3

**Assumed annual rates of growth in factor endowments and real GDP, and implied total factor productivity and real GDP per capita growth rates, from 2004 to 2030<sup>a</sup> (Percent per year)**

| Regions                 | Popul-ation | Unskilled labor | Skilled labor | Capital | Real GDP | Implied TFP <sup>a</sup> | Implied realGDP per capita |
|-------------------------|-------------|-----------------|---------------|---------|----------|--------------------------|----------------------------|
| USA                     | 0.7         | 0.8             | -0.2          | 3.2     | 2.6      | 1.4                      | 1.9                        |
| Canada                  | 0.4         | 0.4             | -0.6          | 3.1     | 2.6      | 1.2                      | 2.2                        |
| EU27 and EFTA           | -0.1        | 0.0             | -0.7          | 1.9     | 1.9      | 1.2                      | 2.0                        |
| Russia                  | -0.6        | -0.7            | -1.0          | 3.2     | 3.2      | 1.2                      | 3.8                        |
| Rest E. Europe/C. Asia  | 0.6         | 0.7             | 1.4           | 3.9     | 4.1      | 1.2                      | 3.5                        |
| Australia               | 0.6         | 0.8             | -0.2          | 3.7     | 3.4      | 1.5                      | 2.8                        |
| New Zealand             | 0.7         | 1.0             | 0.0           | 3.6     | 3.4      | 1.2                      | 2.7                        |
| Japan                   | -0.3        | -0.7            | -1.4          | 2.3     | 1.4      | 1.0                      | 1.7                        |
| Korea                   | 0.3         | -0.4            | 2.0           | 4.9     | 4.7      | 1.9                      | 4.4                        |
| HongKong/Sing/Taiwan    | 0.4         | 0.2             | 0.6           | 4.9     | 4.5      | 1.8                      | 4.1                        |
| China                   | 0.6         | 0.5             | 4.5           | 6.0     | 6.0      | 2.2                      | 5.4                        |
| Indonesia               | 1.1         | 1.3             | 3.7           | 4.8     | 5.1      | 1.6                      | 4.0                        |
| Malaysia                | 1.3         | 1.5             | 5.0           | 5.7     | 5.7      | 1.6                      | 4.3                        |
| Thailand                | 0.5         | 0.1             | 2.0           | 4.0     | 4.7      | 1.7                      | 4.2                        |
| Rest of East Asia       | 1.2         | 1.5             | 2.9           | 4.1     | 4.4      | 1.2                      | 3.2                        |
| India                   | 1.1         | 1.5             | 3.0           | 5.9     | 5.8      | 1.8                      | 4.7                        |
| Rest of South Asia      | 1.7         | 2.2             | 3.1           | 5.0     | 5.1      | 1.4                      | 3.4                        |
| Argentina               | 0.9         | 0.3             | 2.9           | 2.7     | 3.4      | 1.5                      | 2.5                        |
| Brazil                  | 1.0         | 0.9             | 2.3           | 3.3     | 3.7      | 1.3                      | 2.6                        |
| Rest of Latin America   | 1.3         | 1.6             | 2.9           | 3.5     | 4.0      | 1.0                      | 2.6                        |
| Middle East/N. Africa   | 1.6         | 2.0             | 2.4           | 4.1     | 4.6      | 1.0                      | 2.9                        |
| South Africa            | 0.4         | 0.7             | 0.5           | 1.9     | 3.3      | 1.8                      | 2.9                        |
| Rest Sub-Saharan Africa | 2.0         | 2.5             | 2.4           | 3.8     | 4.6      | 1.0                      | 2.6                        |
| High-income countries   | 0.2         | 0.2             | -0.5          | 2.6     | 2.2      | 1.2                      | 2.0                        |
| Developing countries    | 1.2         | 1.4             | 2.9           | 4.6     | 4.7      | 1.5                      | 3.5                        |
| World                   | 1.0         | 1.2             | 1.1           | 3.1     | 2.9      | 1.3                      | 1.9                        |

<sup>a</sup> Additional primary sectoral TFP shocks (percent per year) from 2004 to 2030: coal 2.1, oil 1.9, gas 1.3, mineral resources 1.2, agriculture and food 0.9 (except cotton 1.3), forestry 1.2.

Source: Authors' compilation drawing on World Bank and OECD projections.



TABLE A4  
**Exogenous yield shocks attributed to climate change in 2030, by region and sector**  
**(Percentage change in land productivity)**

| Regions                | Rice |     |      | Wheat |     |      | Coarse grains |     |      | Fruits & veg |     |      | Oil seeds |     |      | Cotton |     |      | Other crops <sup>a</sup> |     |      |
|------------------------|------|-----|------|-------|-----|------|---------------|-----|------|--------------|-----|------|-----------|-----|------|--------|-----|------|--------------------------|-----|------|
|                        | Low  | Med | High | Low   | Med | High | Low           | Med | High | Low          | Med | High | Low       | Med | High | Low    | Med | High | Low                      | Med | High |
|                        | USA  | -10 | -3   | 4     | -10 | 2    | 14            | -32 | -15  | -3           | -10 | 2    | 14        | -10 | 2    | 14     | -15 | -3   | 9                        | -10 | 2    |
| Canada                 | -10  | -3  | 4    | -5    | 7   | 19   | -17           | -10 | -3   | -10          | 2   | 14   | 0         | 10  | 24   | -10    | -3  | 4    | -10                      | 2   | 14   |
| EU27 and EFTA          | -5   | 7   | 19   | -5    | 7   | 19   | -17           | -5  | 7    | -5           | 7   | 19   | -5        | 7   | 19   | -5     | 7   | 19   | -5                       | 7   | 19   |
| Russia                 | -5   | 7   | 19   | -5    | 7   | 19   | -17           | -5  | 7    | -5           | 7   | 19   | -5        | 7   | 19   | -5     | 7   | 19   | -5                       | 7   | 19   |
| Rest of Europe/C. Asia | -5   | 7   | 19   | -5    | 7   | 19   | -17           | -5  | 7    | -5           | 7   | 19   | -5        | 7   | 19   | -5     | 7   | 19   | -5                       | 7   | 19   |
| Australia              | -15  | -3  | 9    | -5    | 7   | 19   | -17           | -5  | 7    | -5           | -3  | 19   | -10       | 2   | 14   | -10    | -3  | 4    | -5                       | 7   | 19   |
| New Zealand            | -5   | 7   | 19   | -5    | 7   | 19   | -17           | -5  | 7    | -5           | 7   | 19   | -10       | 2   | 14   | 0      | 7   | 14   | -5                       | 7   | 19   |
| Japan                  | 2    | 9   | 16   | -3    | 4   | 11   | -7            | 0   | 7    | -3           | 4   | 11   | 2         | 9   | 16   | 2      | 9   | 16   | -3                       | 4   | 11   |
| Korea                  | 5    | 12  | 19   | 5     | 12  | 19   | -2            | 5   | 12   | 5            | 12  | 19   | 5         | 12  | 19   | 5      | 12  | 19   | 5                        | 12  | 19   |
| HongKong/Sing/Taiwan   | 5    | 12  | 19   | 5     | 12  | 19   | -2            | 5   | 12   | 5            | -3  | 19   | 5         | 12  | 19   | 5      | 12  | 19   | 5                        | 12  | 19   |
| China                  | -12  | 0   | 12   | -10   | 2   | 14   | -22           | -10 | 2    | -15          | -8  | -1   | -12       | 0   | 12   | -6     | 0   | 7    | -15                      | -8  | -1   |
| Indonesia              | 0    | -3  | 14   | 0     | -3  | 14   | -7            | -10 | 7    | 0            | 7   | 14   | 0         | -3  | 14   | 0      | -3  | 14   | 0                        | -3  | 14   |
| Malaysia               | -10  | -3  | 4    | -10   | -3  | 4    | -17           | -10 | -3   | -10          | -3  | 4    | -10       | -3  | 4    | -10    | -3  | 4    | -10                      | -3  | 4    |
| Thailand               | -10  | -3  | 4    | -10   | -3  | 4    | -17           | -10 | -3   | -10          | -3  | 4    | -10       | -3  | 4    | -10    | -3  | 4    | -10                      | -3  | 4    |
| Rest of East Asia      | -10  | -3  | 4    | -10   | -3  | 4    | -17           | -10 | -3   | -10          | -3  | 4    | -10       | -3  | 4    | -10    | -3  | 4    | -10                      | -3  | 4    |
| India                  | -15  | -5  | 4    | -10   | -3  | 4    | -17           | -10 | -3   | -10          | -3  | 4    | -10       | -3  | 4    | -10    | -3  | 4    | -10                      | -3  | 4    |
| Rest of South Asia     | -15  | -5  | 4    | -10   | -3  | 4    | -17           | -10 | -3   | -10          | -3  | 4    | -10       | -3  | 4    | -10    | -3  | 4    | -10                      | -3  | 4    |
| Argentina              | -10  | -3  | 4    | -10   | -3  | 4    | -2            | -10 | 22   | -10          | -3  | 4    | -10       | -3  | 4    | -10    | -3  | 4    | -10                      | -3  | 4    |
| Brazil                 | -10  | -3  | 4    | -10   | -3  | 4    | -17           | -10 | -3   | -10          | -3  | 4    | -5        | 2   | 9    | -10    | -3  | 4    | -10                      | -3  | 4    |
| Rest of Latin America  | -10  | -3  | 4    | -10   | -3  | 4    | -17           | -5  | -3   | -10          | -3  | 4    | -10       | -3  | 4    | -10    | -3  | 4    | -10                      | -3  | 4    |
| Middle East/N. Africa  | -5   | 2   | 9    | -5    | 2   | 9    | -12           | -5  | 2    | -5           | 2   | 9    | -5        | 2   | 9    | -5     | 2   | 9    | -5                       | 2   | 9    |
| South Africa           | -20  | -8  | 4    | -20   | -8  | 4    | -42           | -20 | -8   | -20          | -8  | 4    | -20       | -8  | 4    | -20    | -8  | 4    | -20                      | -8  | 4    |
| Rest SS Africa         | -15  | -3  | 9    | -15   | -3  | 9    | -22           | -10 | 2    | -15          | -3  | 9    | -15       | -3  | 9    | -15    | -3  | 9    | -15                      | -3  | 9    |

<sup>a</sup> Except for Sugar crops, for which productivity shocks are zero in all cases.

Source: Authors' compilation drawing on Hertel, Burke and Lobell (2010).