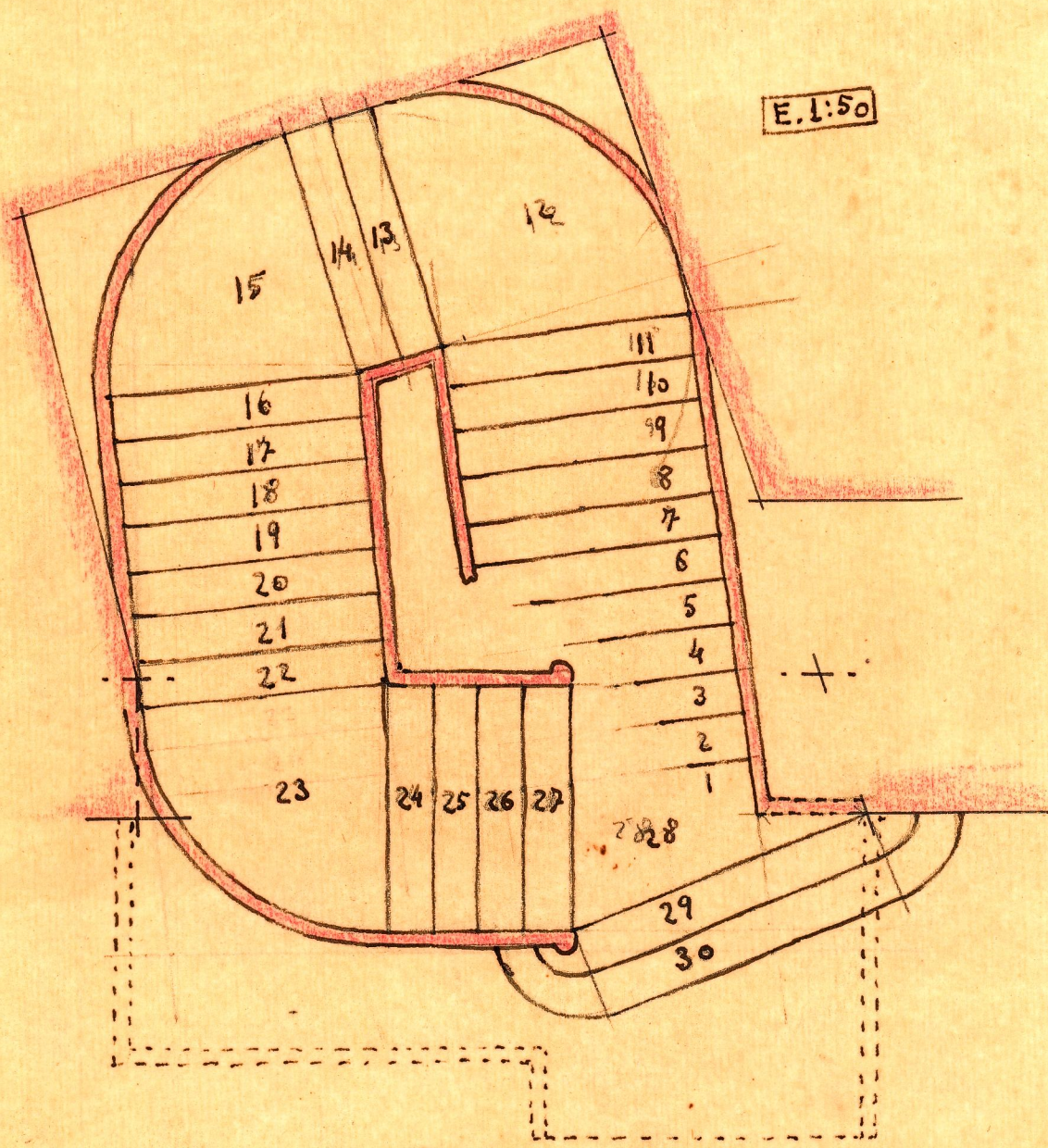


E. 1:50





E. 1:50

Ancho -- 1'75 m

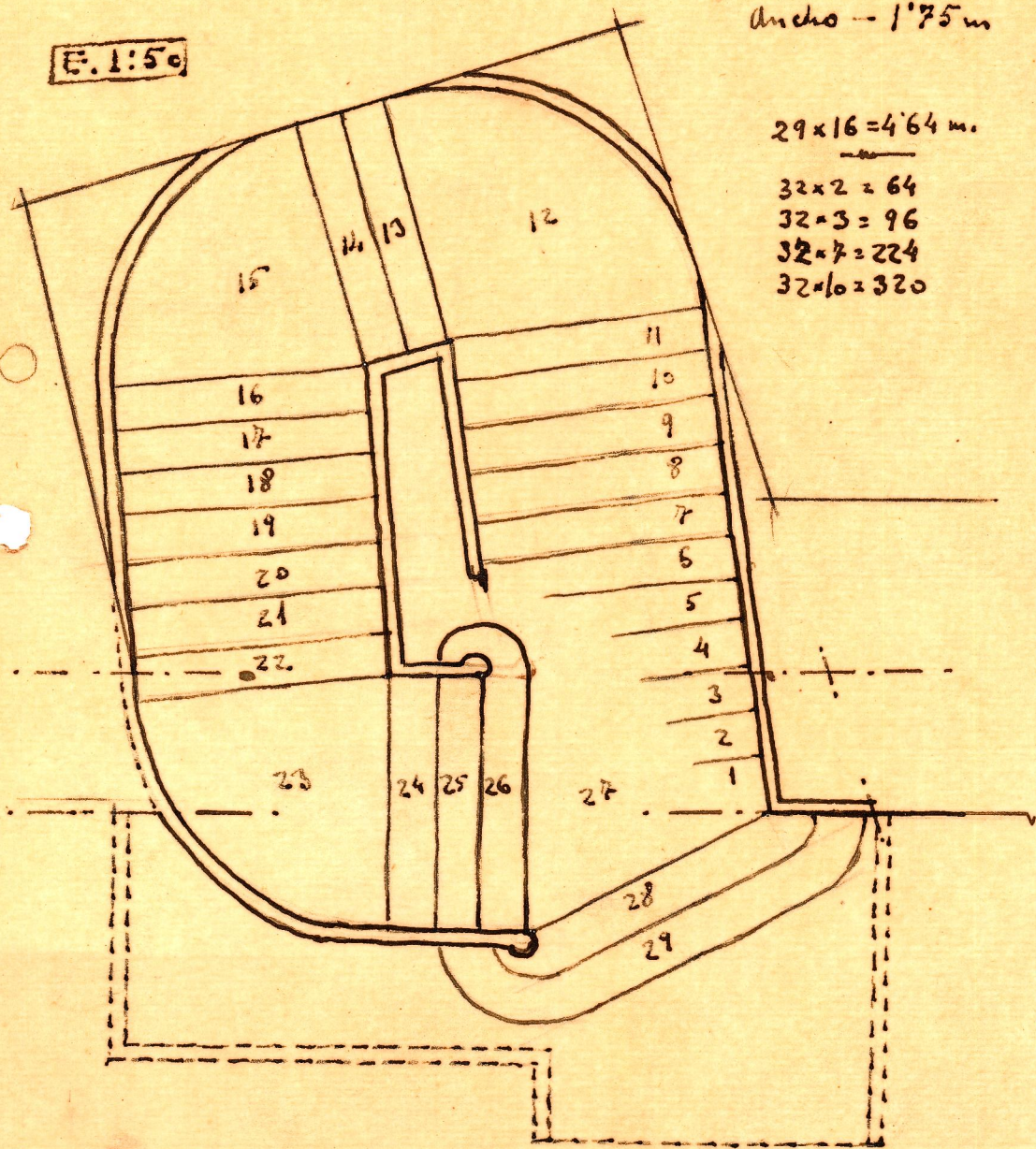
$$29 \times 16 = 464 \text{ m.}$$

$$32 \times 2 = 64$$

$$32 \times 3 = 96$$

$$32 \times 7 = 224$$

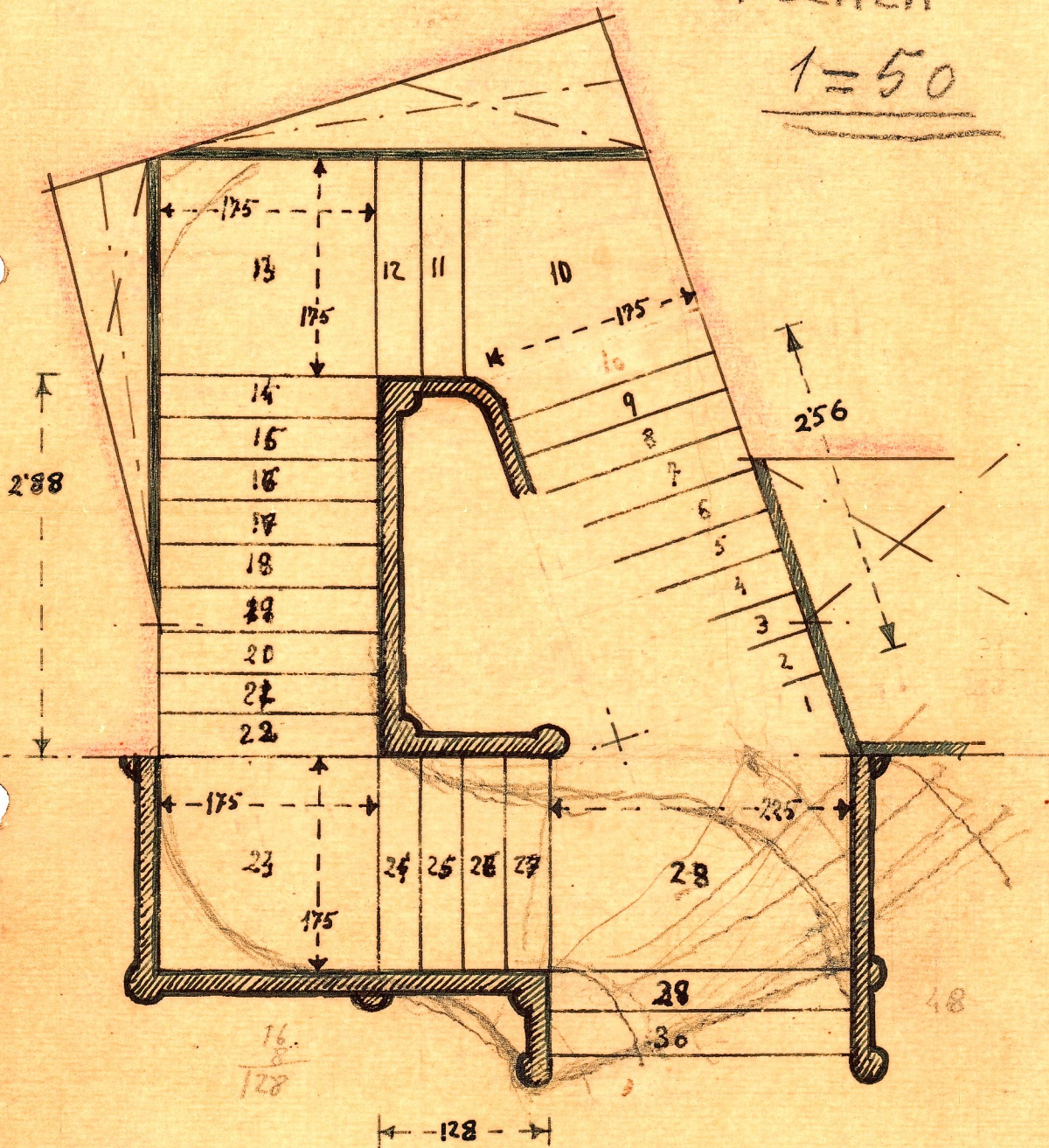
$$32 \times 10 = 320$$



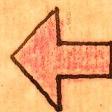
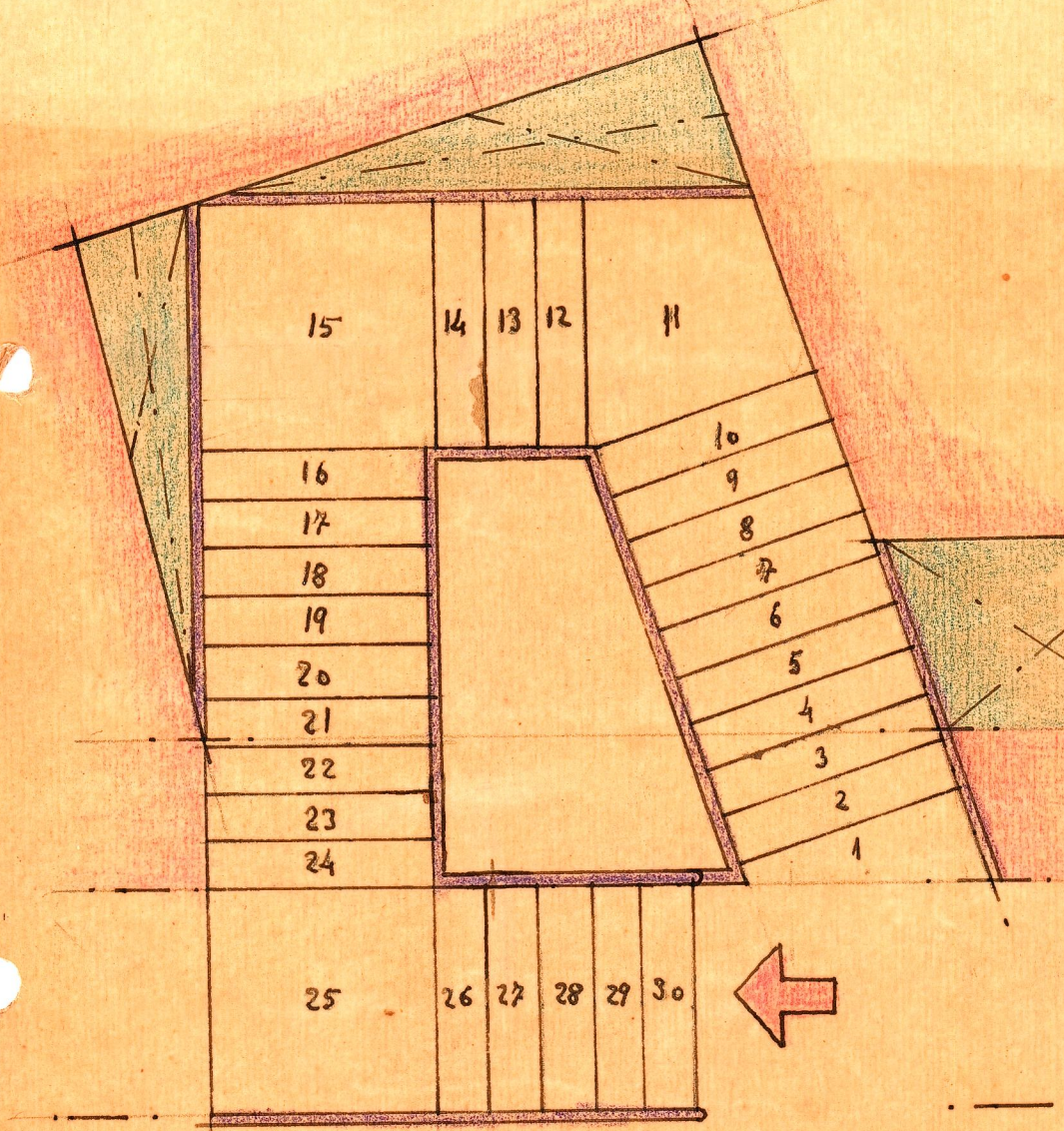


ESCALA

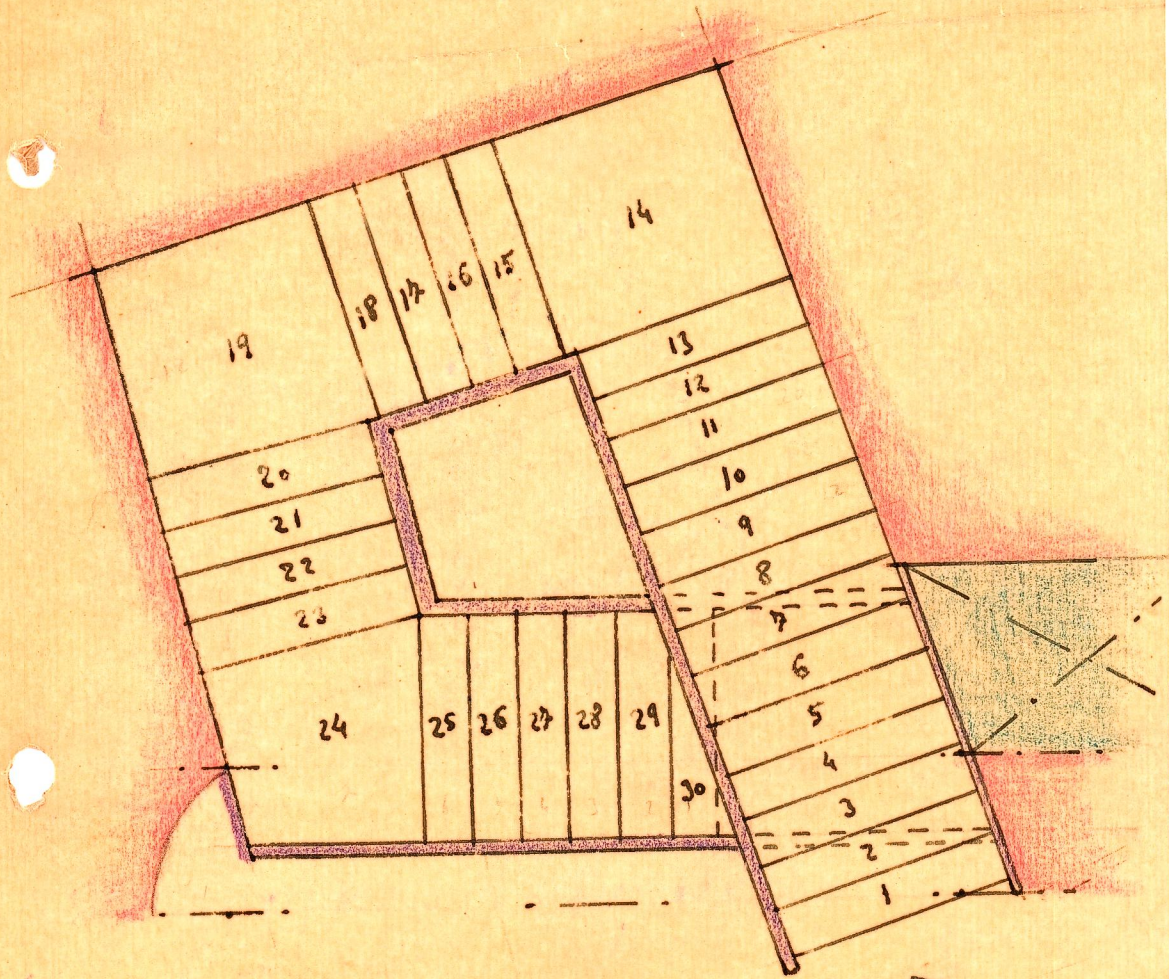
1=50



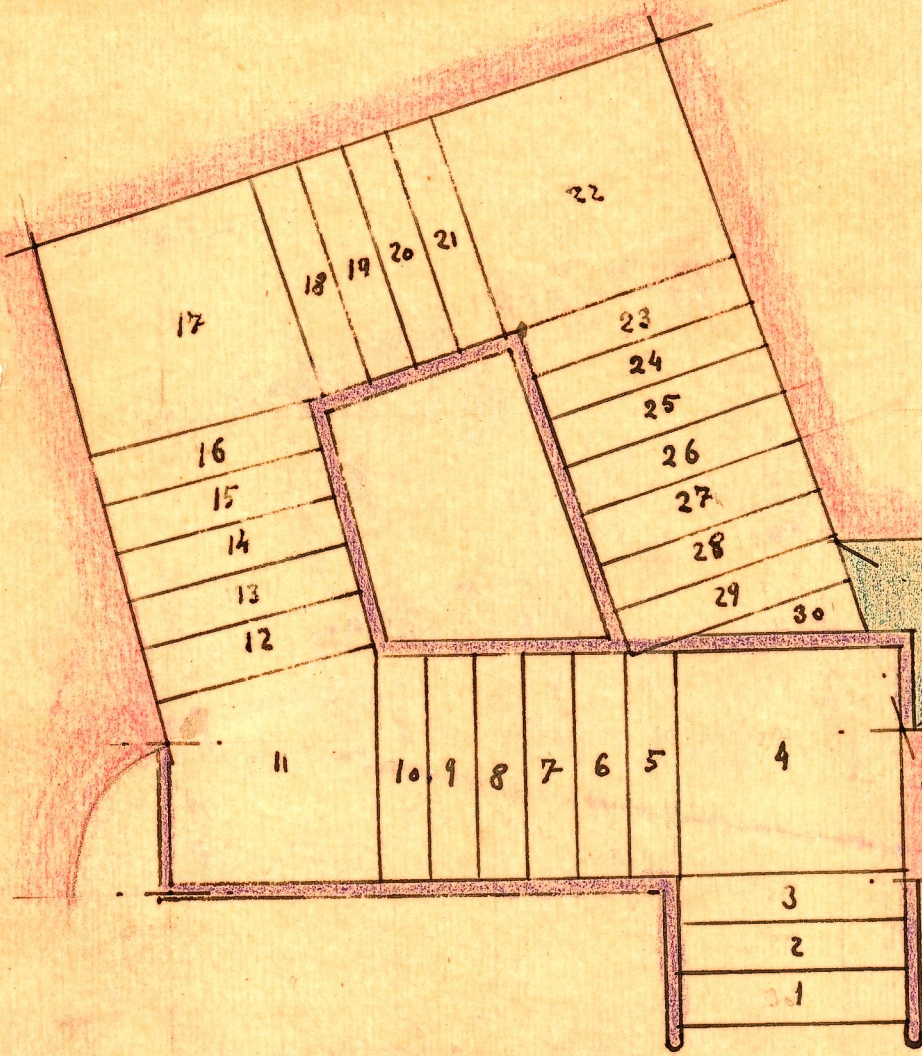








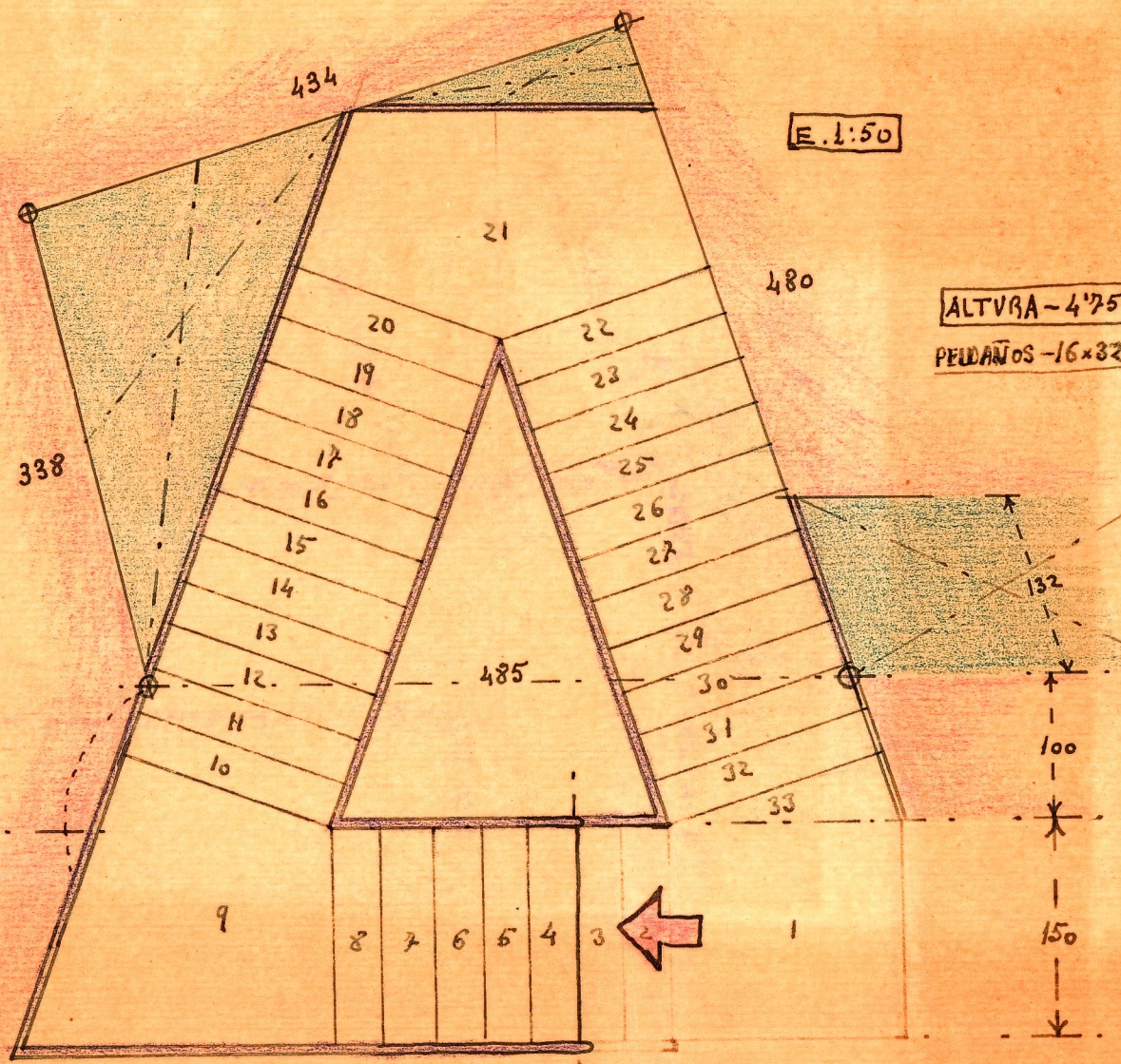




15  
16  
17  
18  
19  
20  
21  
22  
23  
24  
25  
26  
27  
28  
29  
30







E. 1:50

ALTURA - 4.75 m.

PELDAÑOS - 16 x 32.

4.75	16
155	29'6
110	
14	

16  
6  
96