

PROYECTO DE EDIFICIO
ALMACÉN

LIRIA

EMPLAZAMIENTO

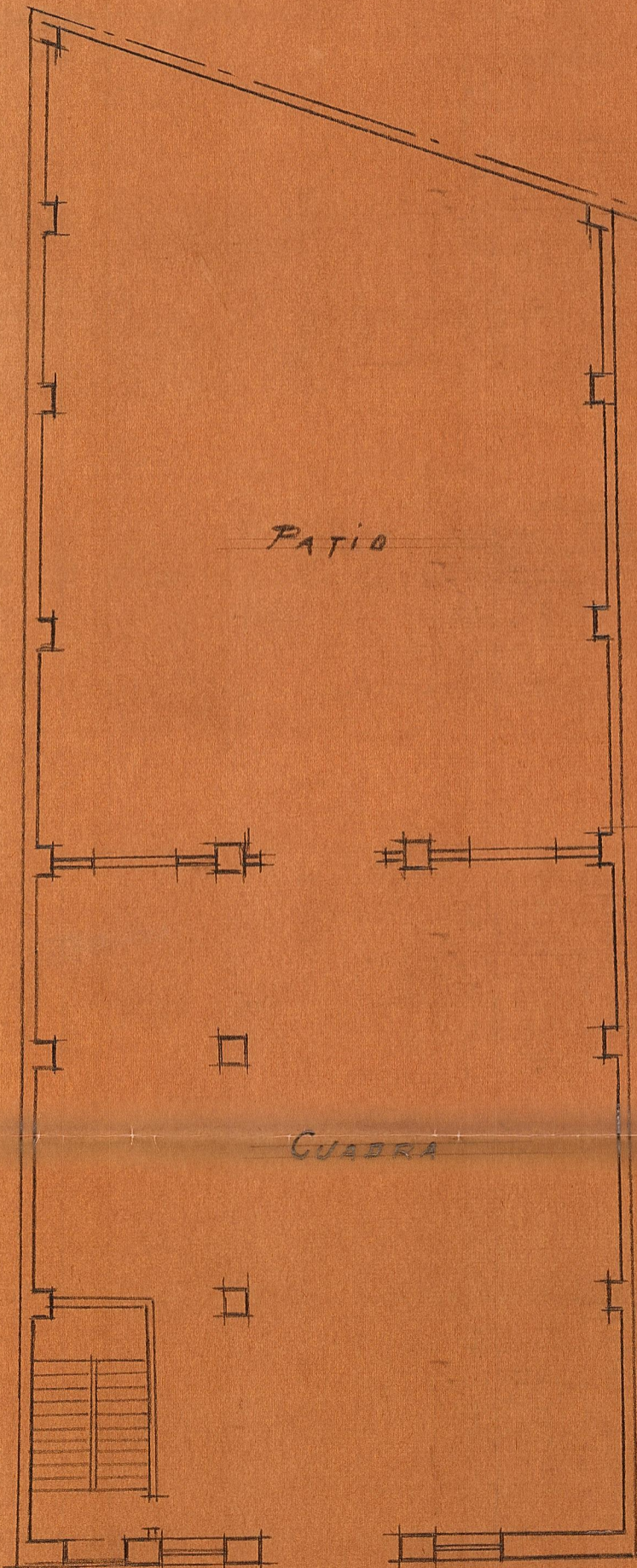
E. 1:1000

Escala 1:100
Valencia, Marzo 1944
C. Arquitecto

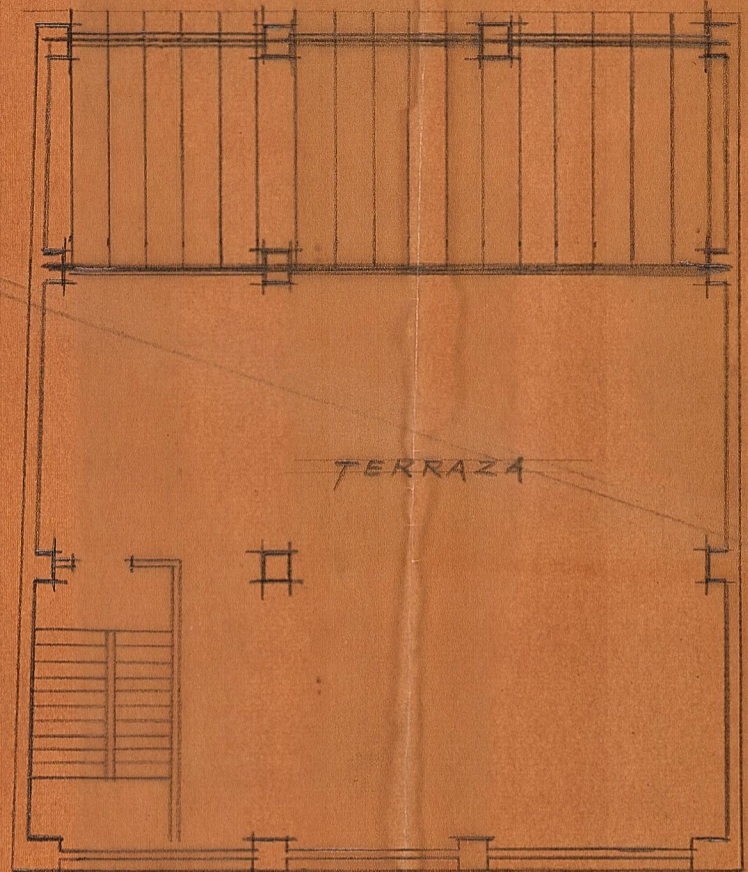
Enramado cubierta árabe

C. PURÍSIMA

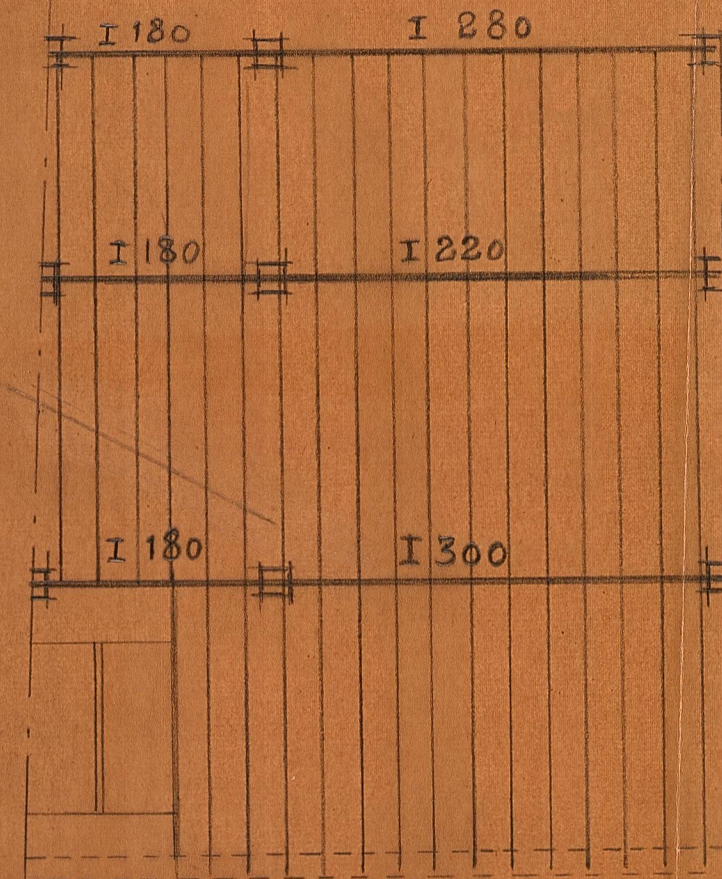
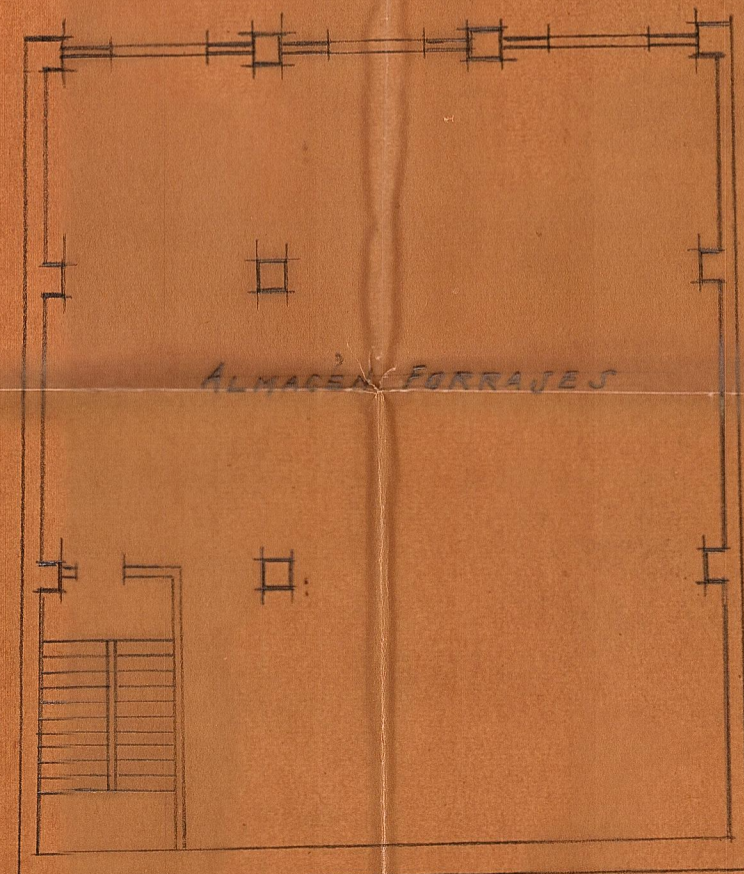
Carretera a Acublas



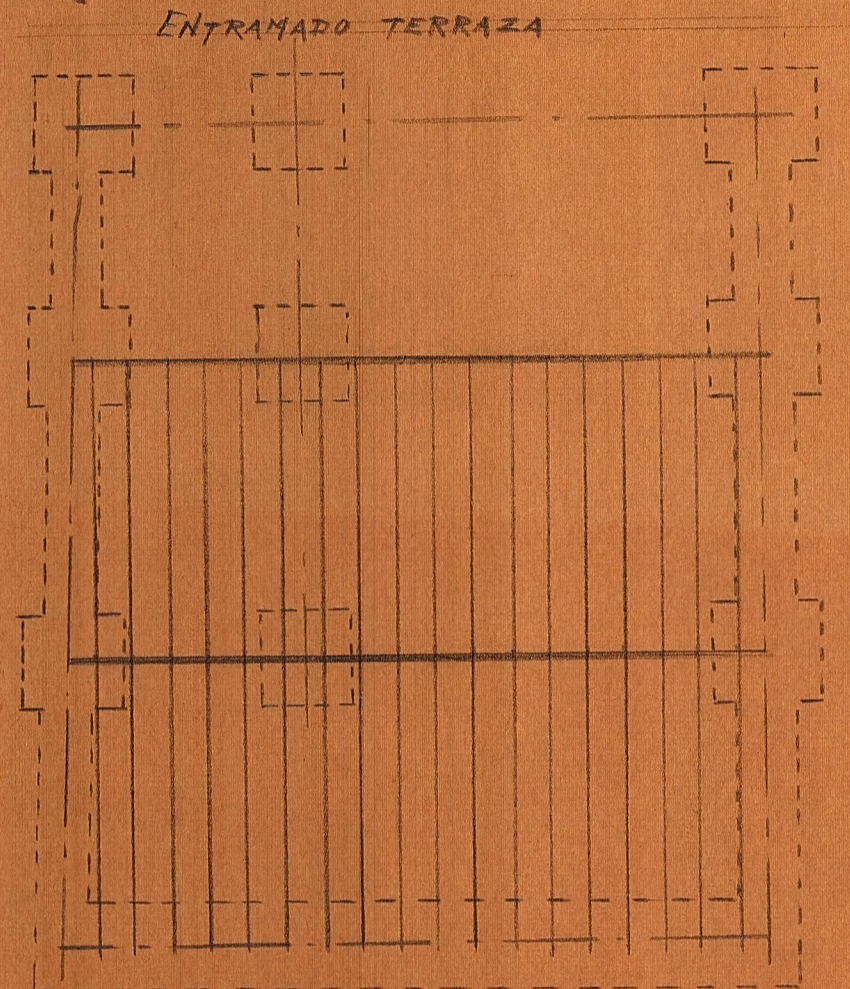
PLANTA BAJA



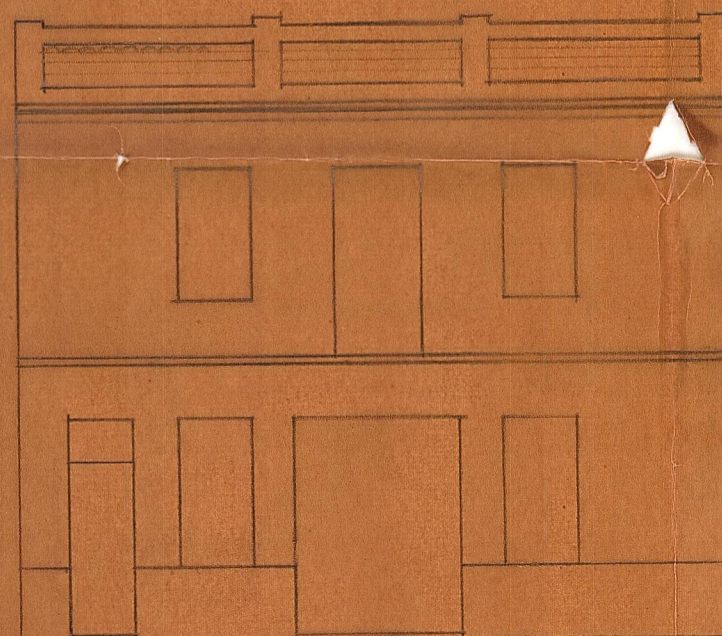
PISO ALTO



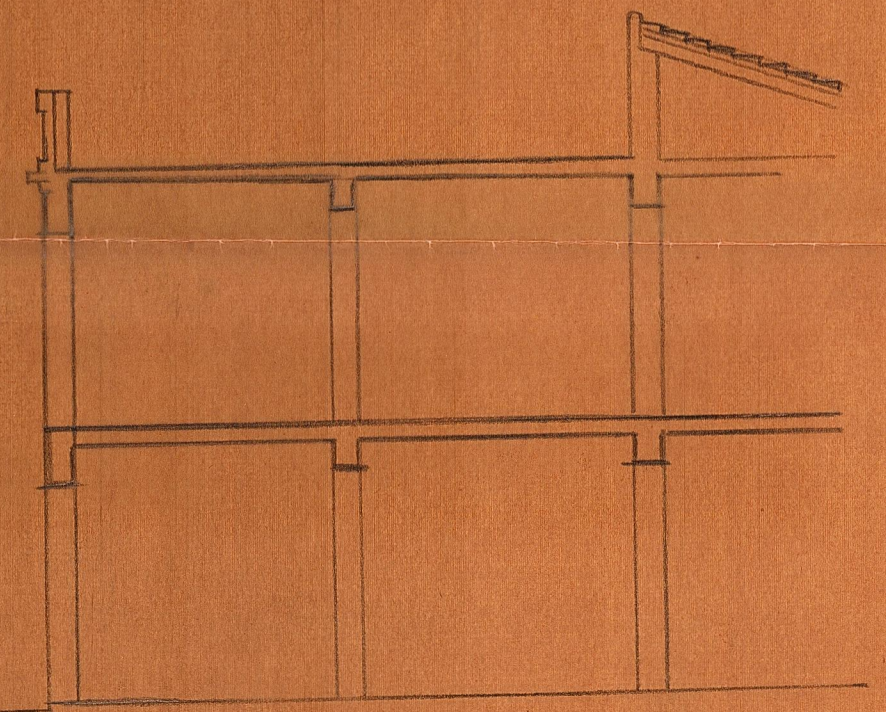
ENTRAMADO PISO



ENTRAMADO TERRAZA



FACHADA



SECCIÓN