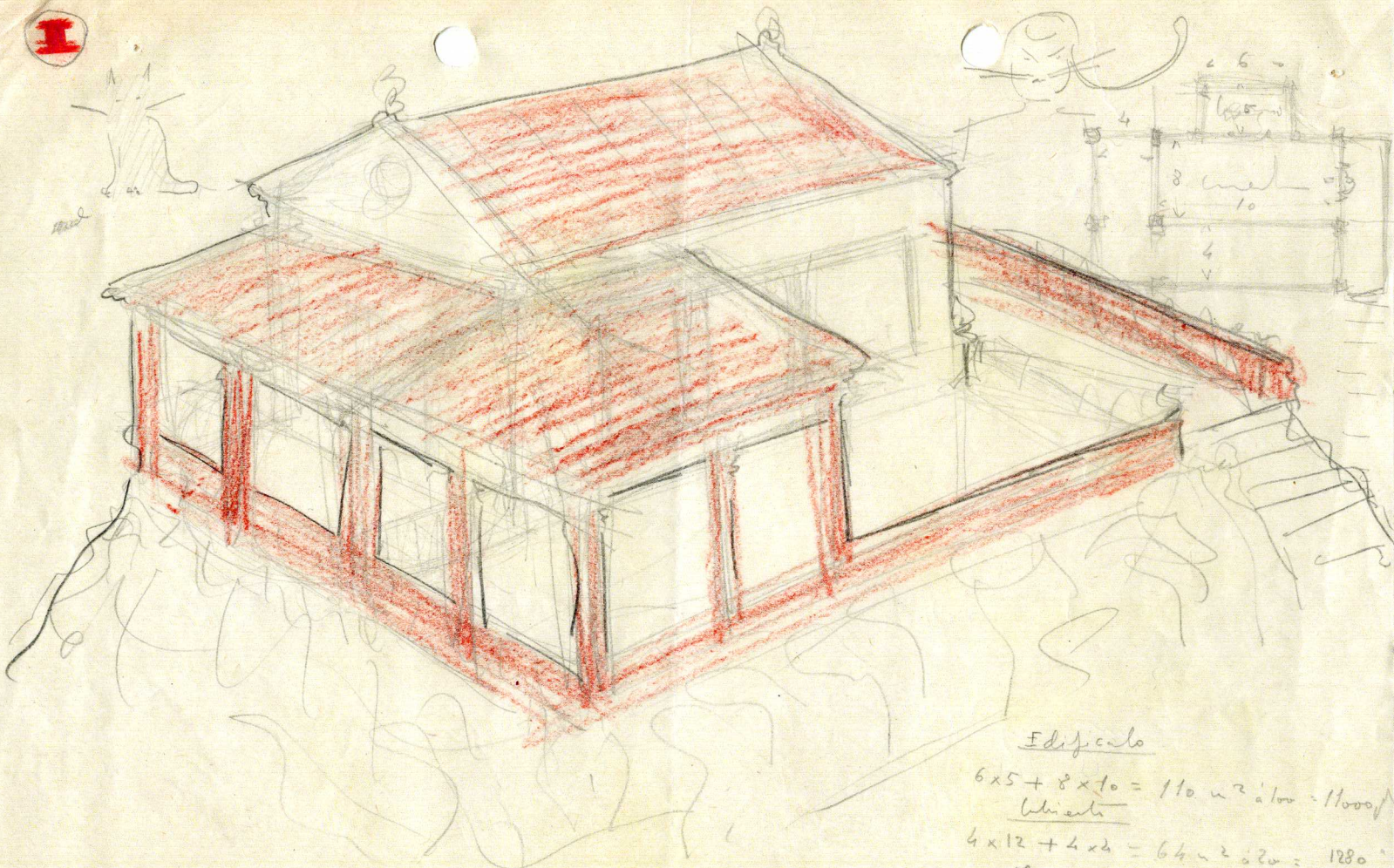


I



1-5-28

Edificio

$$6 \times 5 + 8 \times 10 = 110 \text{ m}^2 \text{ alow} = 11000 \text{ ft}$$

Whiale

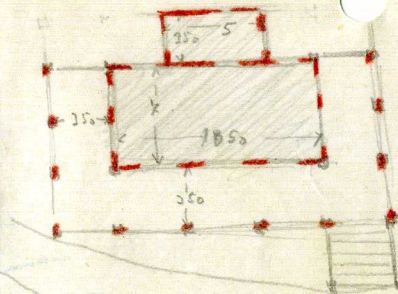
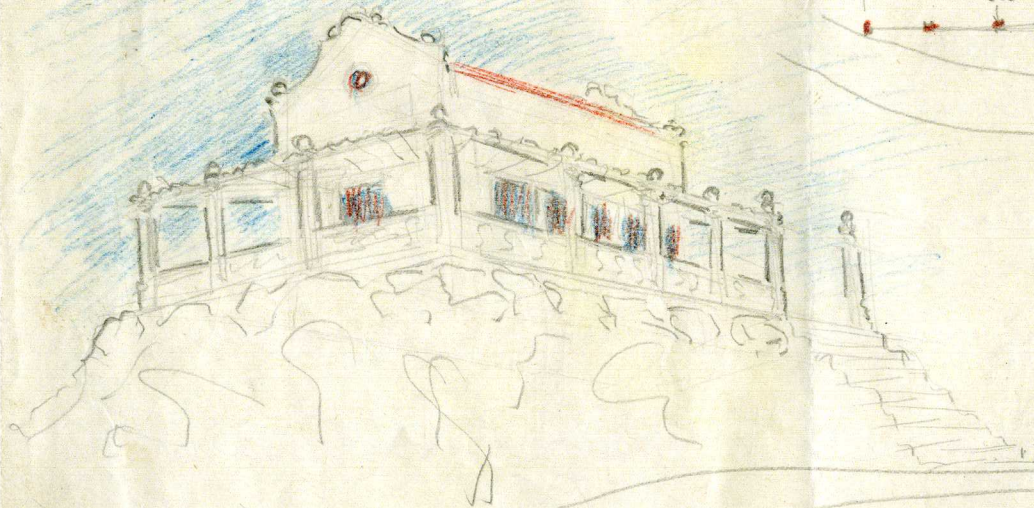
$$4 \times 12 + 4 \times 2 = 64 \text{ m}^2 \text{ o } 20 = 1280$$

Terron

$$4 \times 12 + 4 \times 10 + 6 \times 12 = 136 \text{ m}^2$$

Water

1360
13640 ft



Edificio

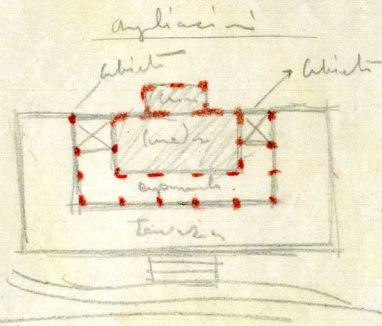
$$2 \times 10'50 + 3'50 \times 5 = 91'25 \text{ ala} = 9100$$

Torre y pasaje

$$2 \times (3'50 \times 2) + 10'50 \times 3'50 = 22'75 \times 20 = 2160$$

Escalera y logia

total 5000
16260



17360
1640

10'50	3'5	10'50	72
2	5	75	30
2350	1750		
18'50	2	525	
910	3500	315	2160
	36'25	36'75	
	21'25		

1-3-28



Edificadu

$$12 \times 8 + 5 \times 4 = 116 \text{ m}^2 \text{ a } 100 = 11600 \text{ pt}$$

Cubierta

$$2 \times 4 \times 4 = 32 \text{ m}^2 \text{ a } 50 = 1600 \text{ pt}$$

Emparedado

$$(2 \times 4 + 12) \times 4 = 80 \text{ m}^2 \text{ a } 30 = 2400 \text{ pt}$$

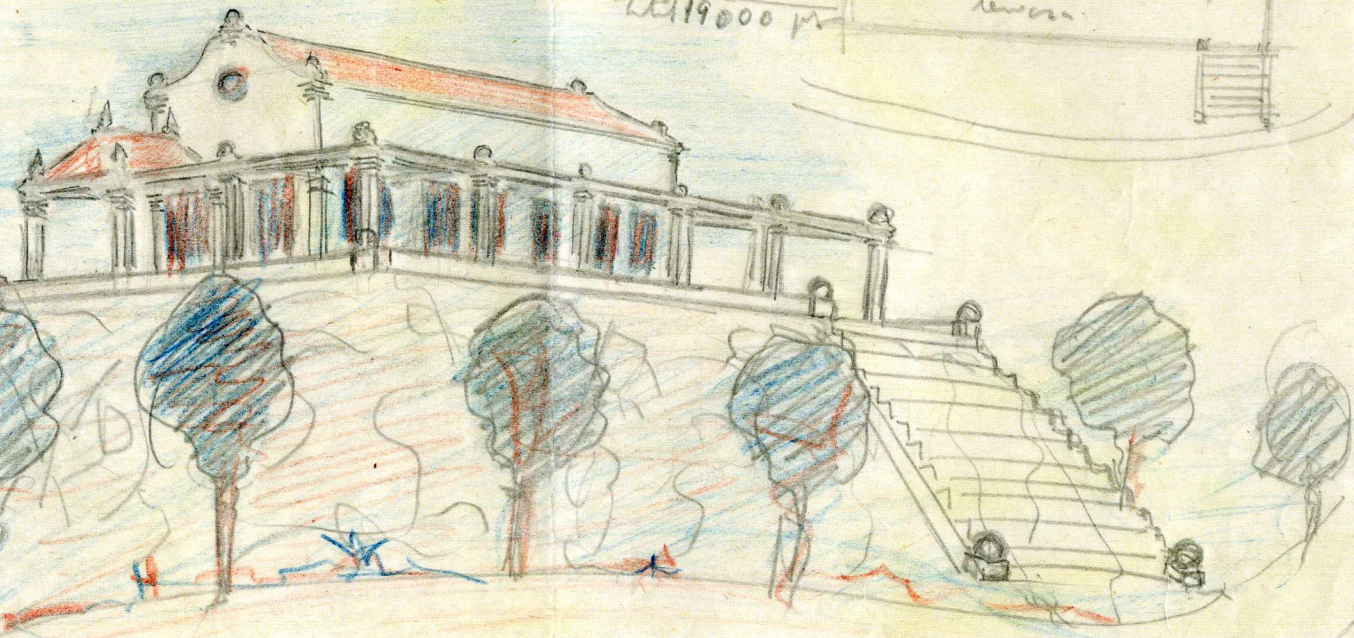
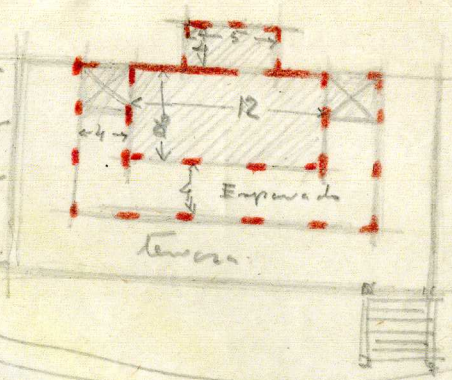
Perimetro

$$(2 \times 12 + 20) \times 4 = 176 \text{ m}^2 \text{ a } 10 = 1760 \text{ pt}$$

Escalera y

$$1640 \text{ pt}$$

$$\underline{2119000 \text{ pt}}$$



1-5-28

12	64
8	3
96	126
20	
116	