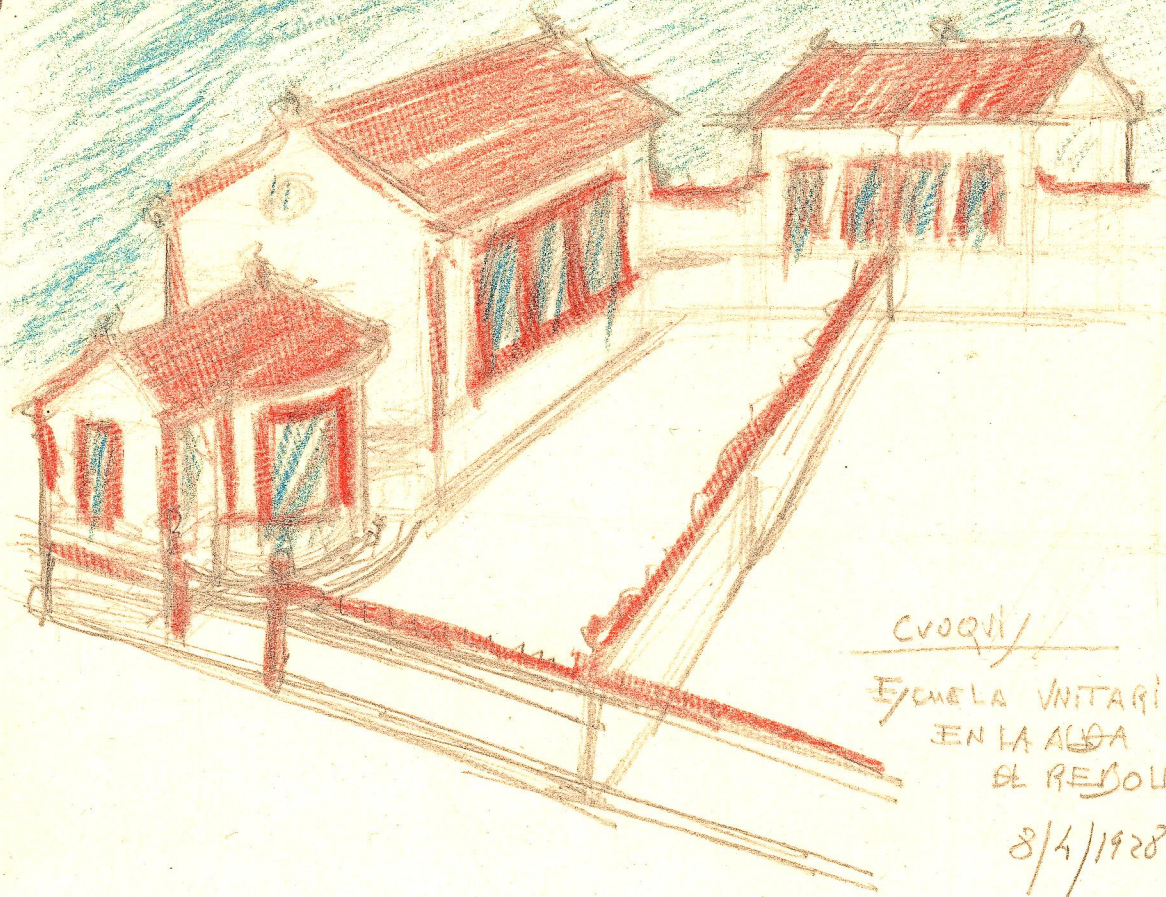


(H)

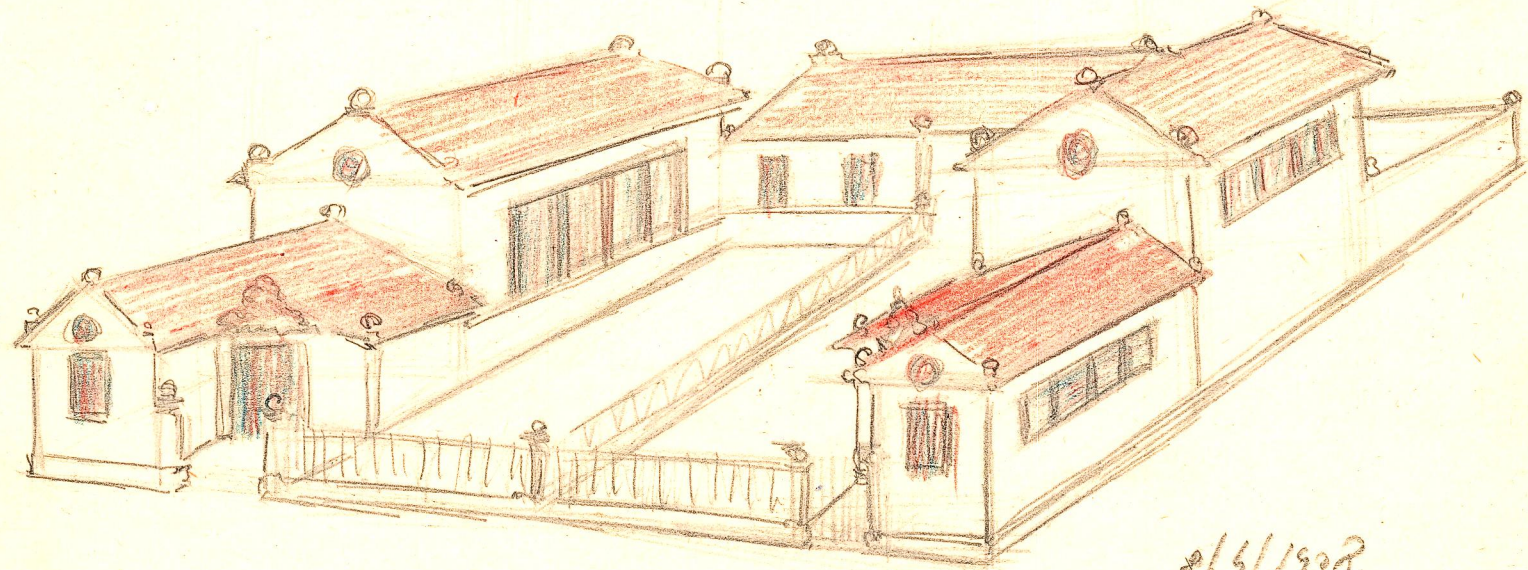


CVOQII/

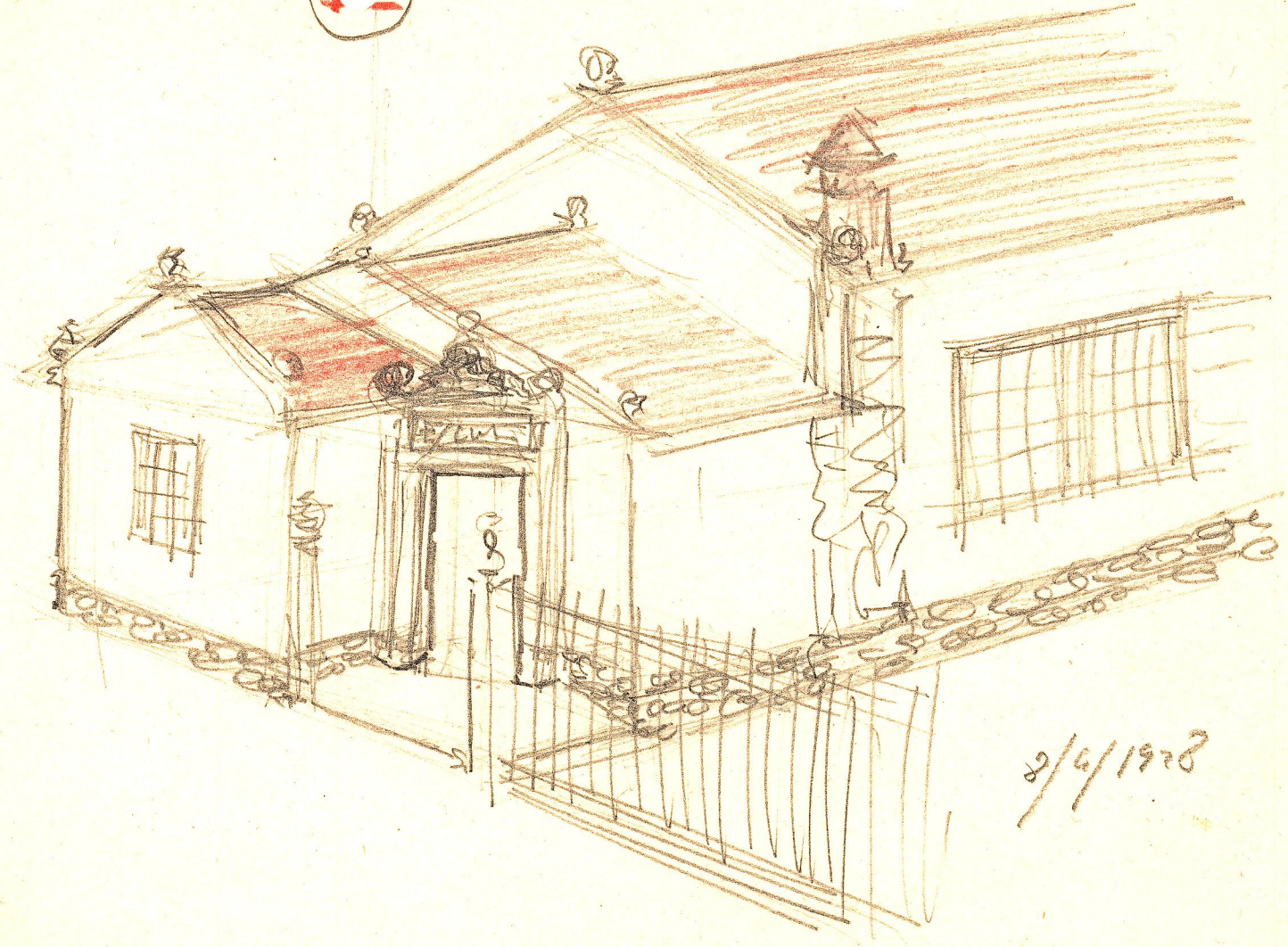
ESCUELA UNITARIA  
EN LA ALBA  
EL REBOLLAR

8/4/1928

II

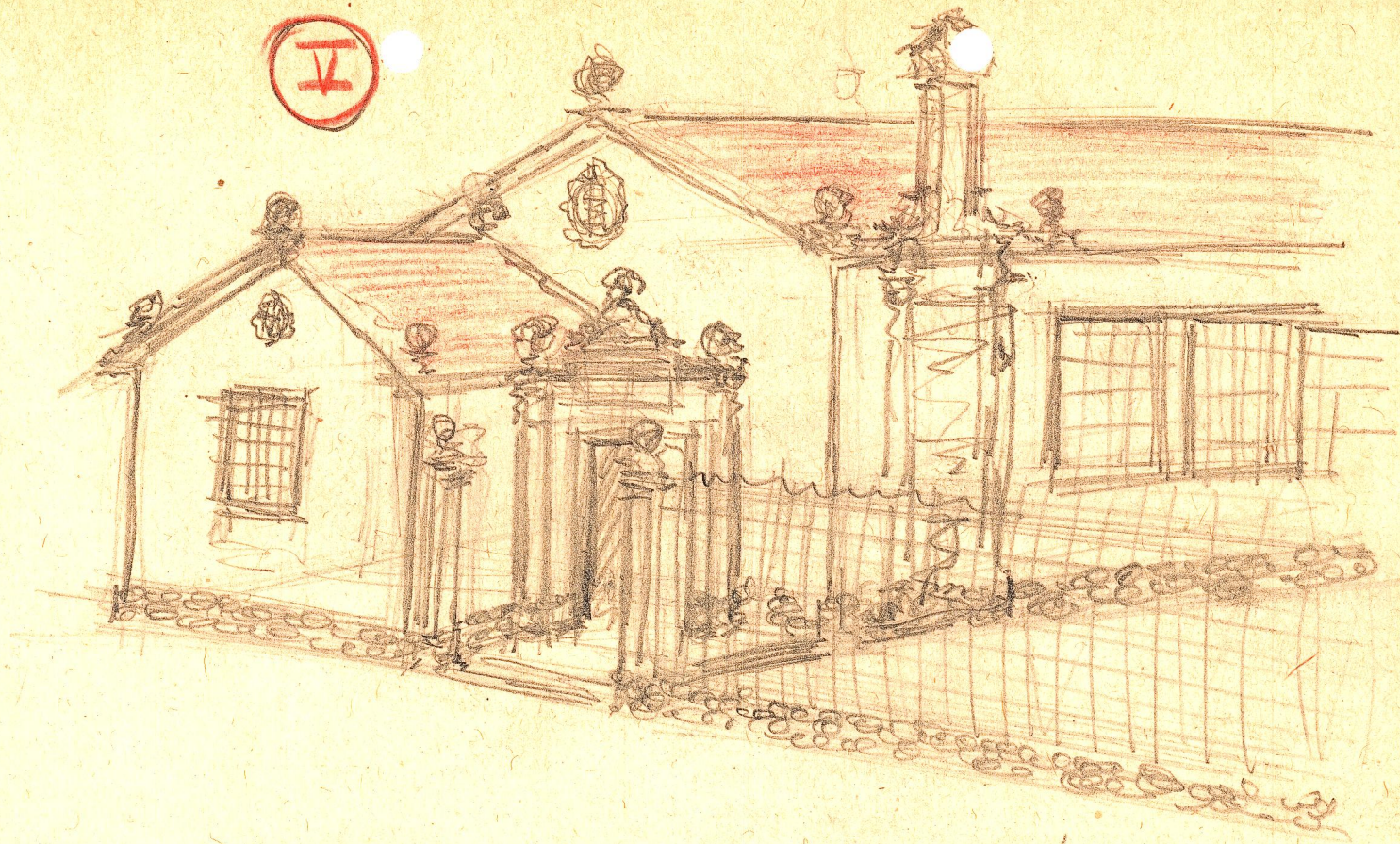


8/5/1928

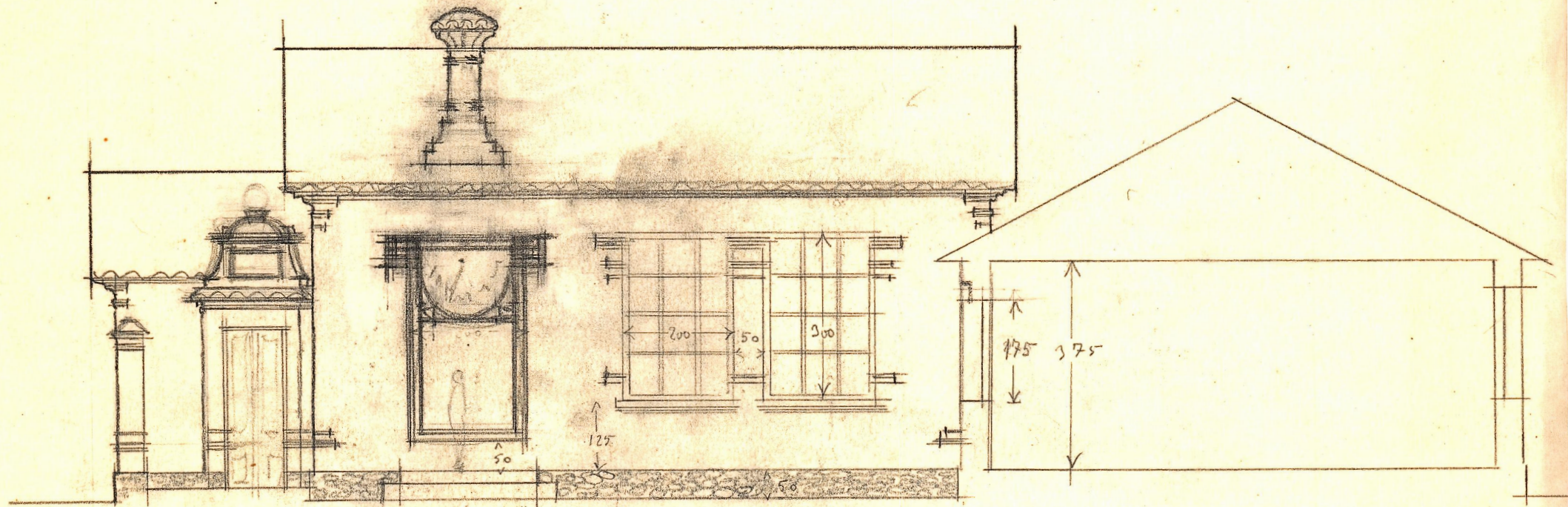


2/6/1928

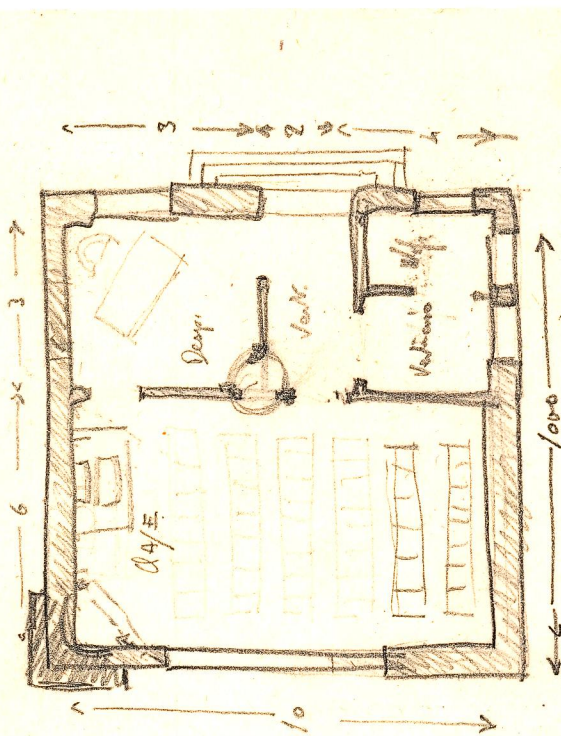
V



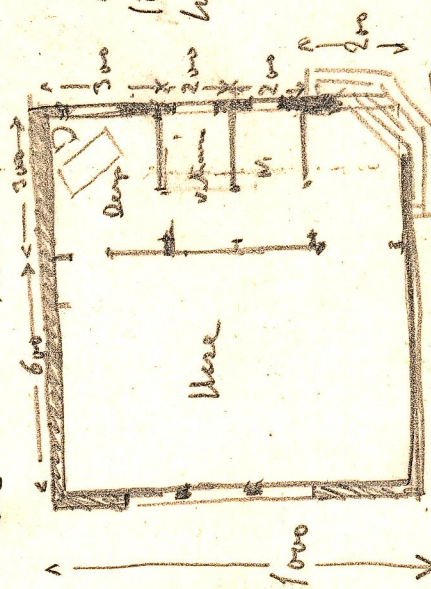
2/4/1928



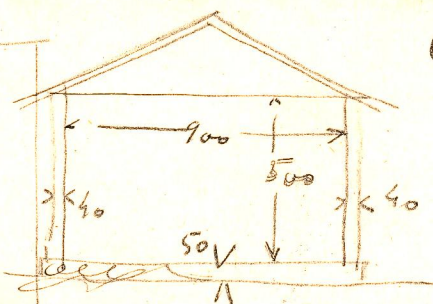
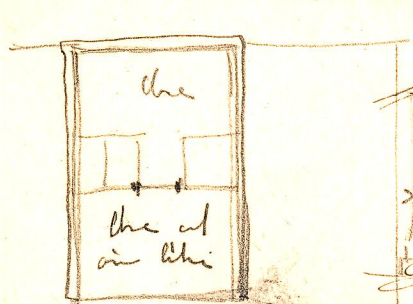
Valencia 26-5-28



10 x 10 = 100  
 100 x 100 = 10000  
 (parte)  
 (completo)

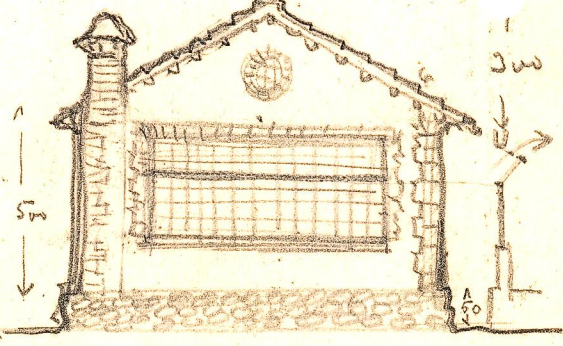
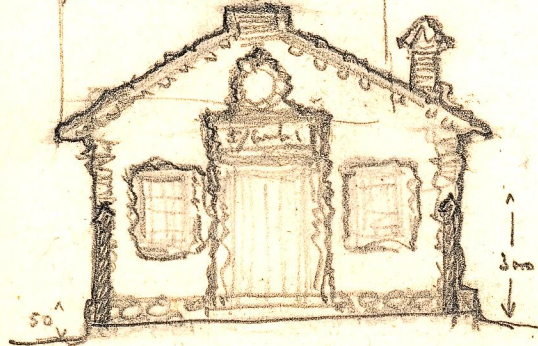
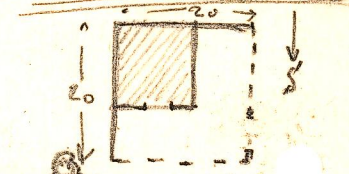


① Muro de almonas.  
 ② Parte de a almonas



④ Solara

③ Alteza de la miera



dicembre - 1927