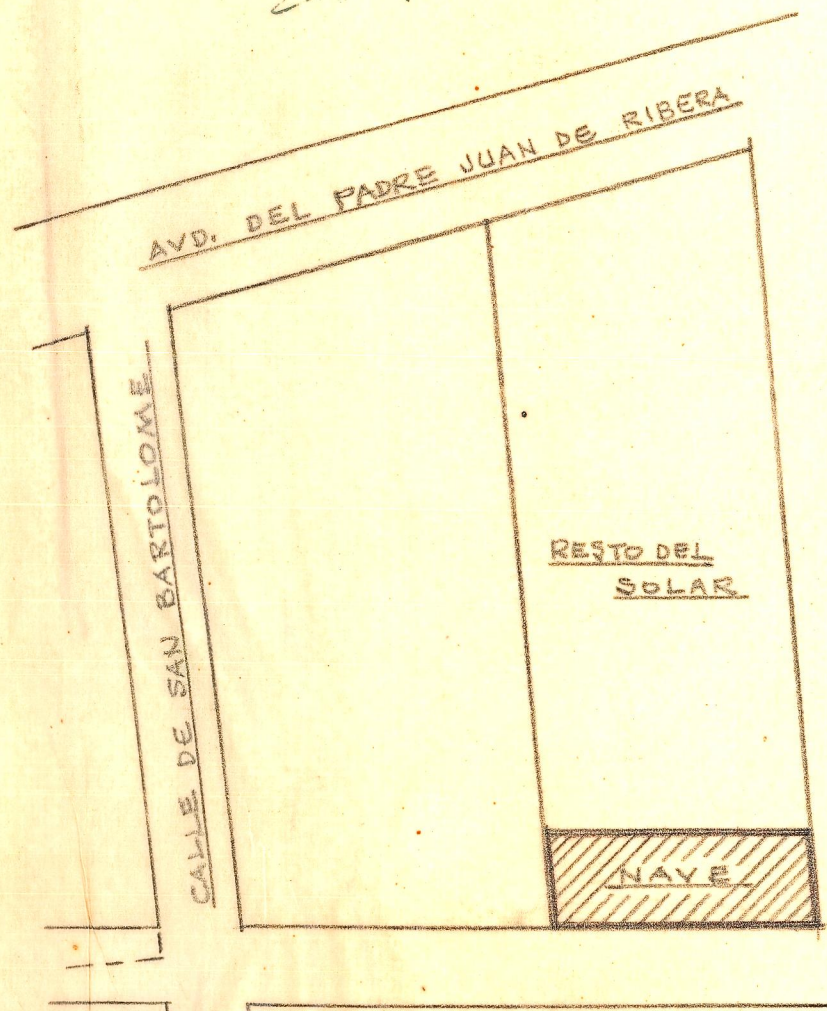


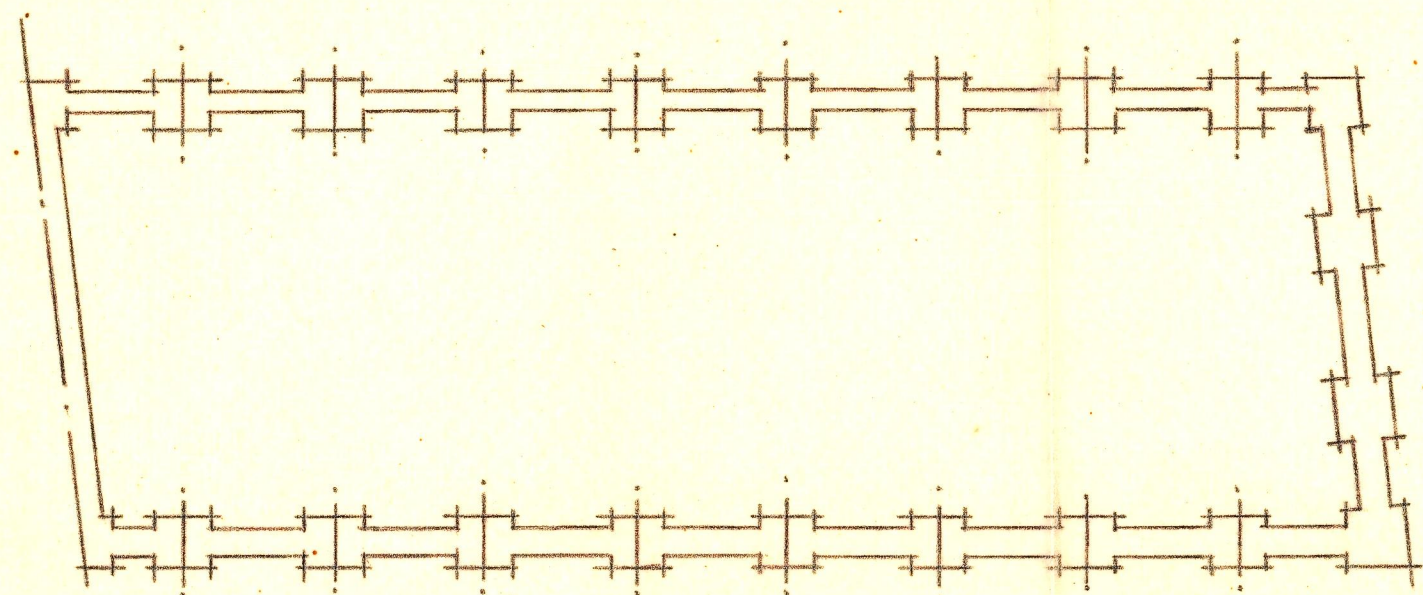
NAVE PARA LA FABRICA DE FUNDICIONES MAGNETICAS
SANTARRUFINA EN ALFARA DEL PATRIARCA - E=1:200

Valencia 7 Julio de 1957
EL ARQUITECTO

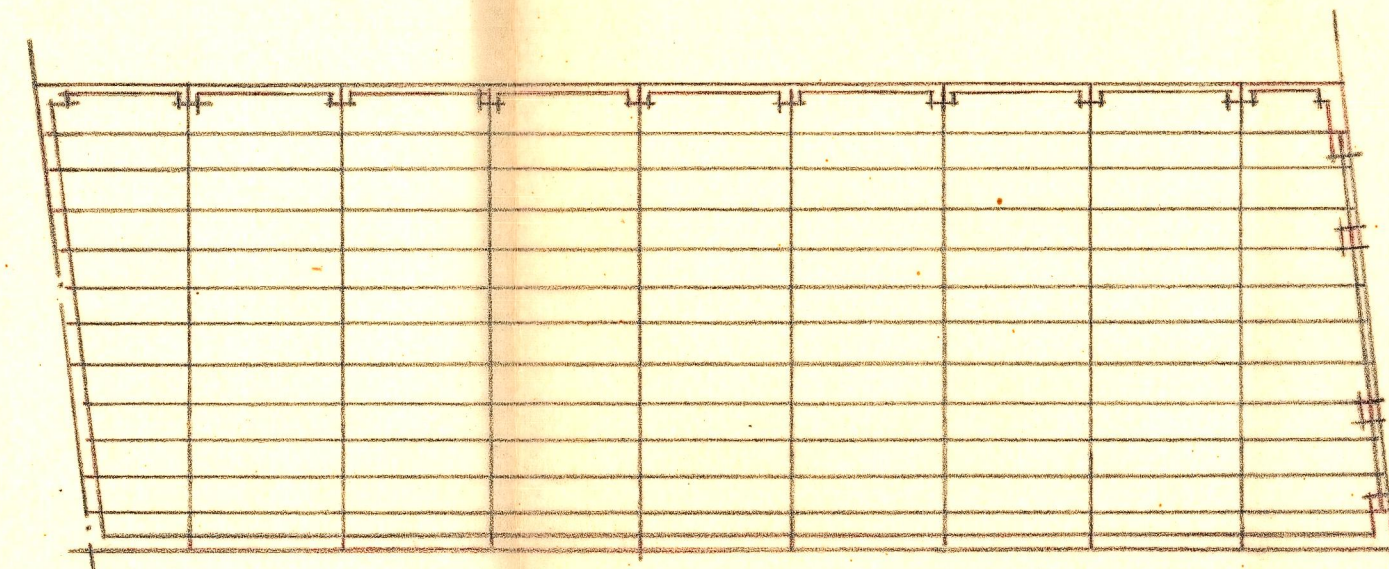
Queta Julen



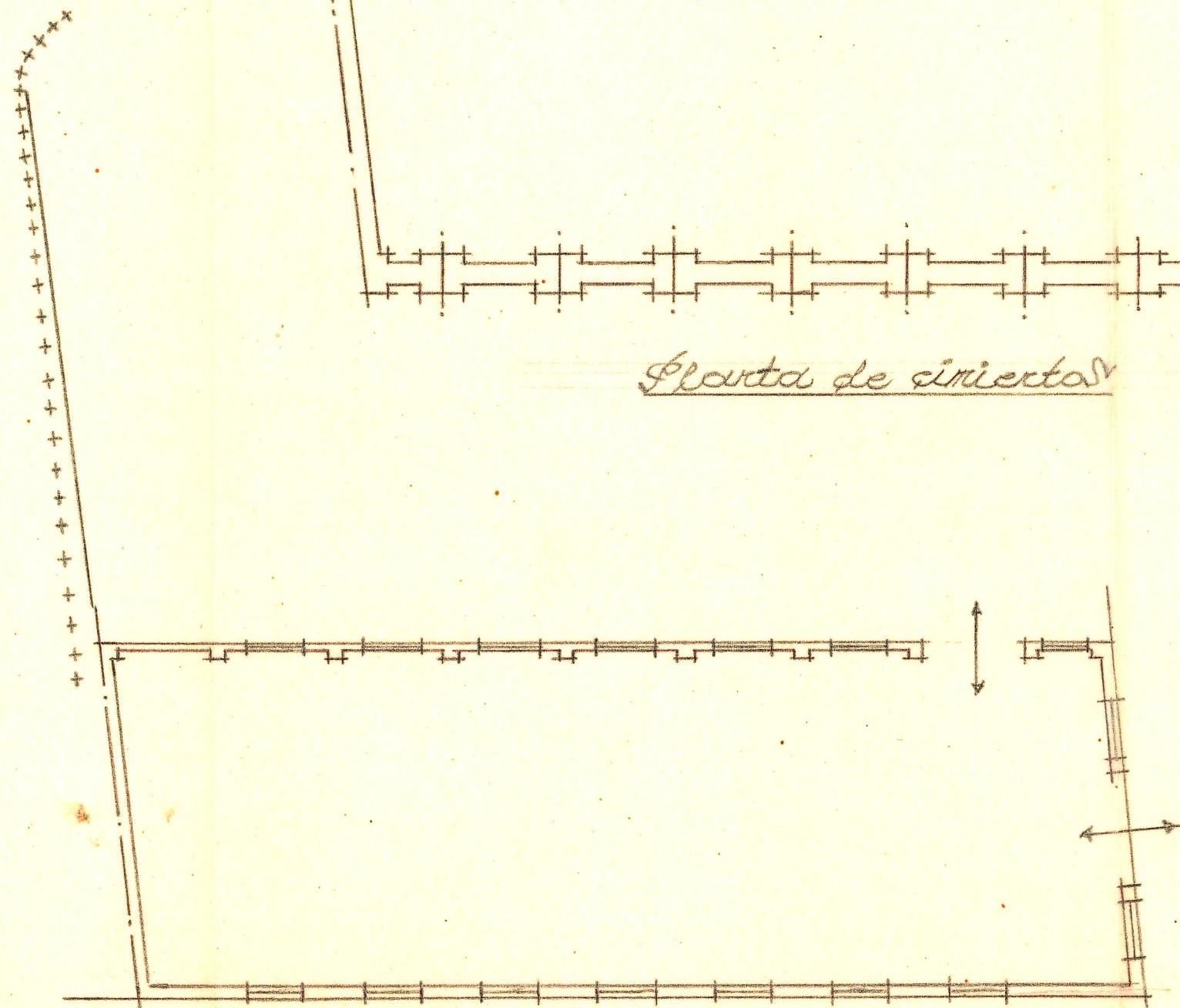
Emplazamiento E=1:1000



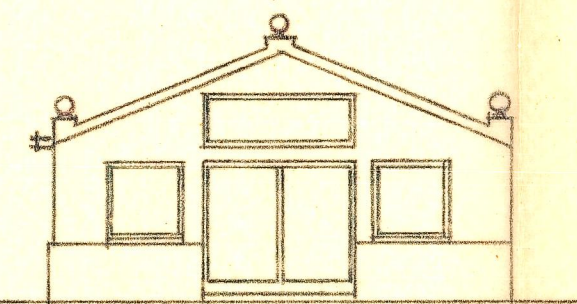
Planta de cubierta



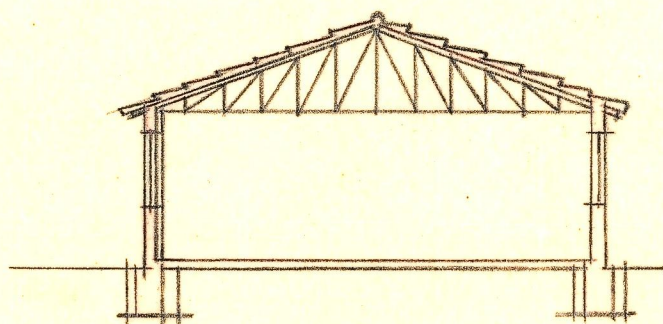
Estructura de cubierta



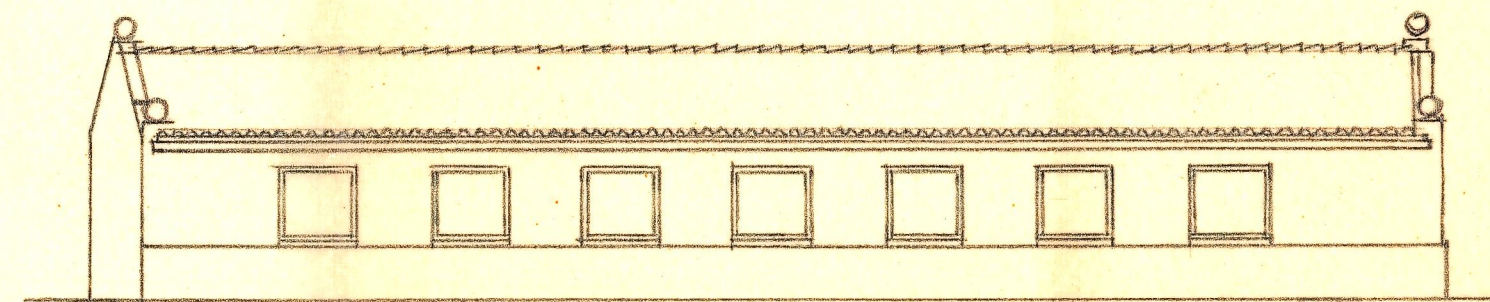
Planta de fundación



Fachada de las Alverías del Seminario



Sección transversal



Fachada lateral