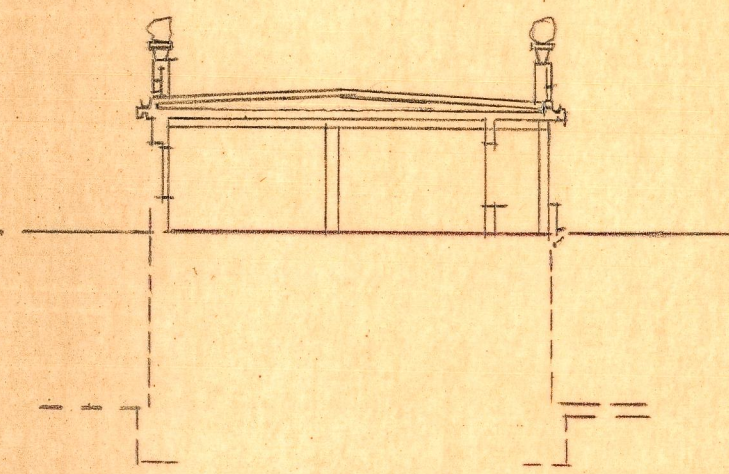
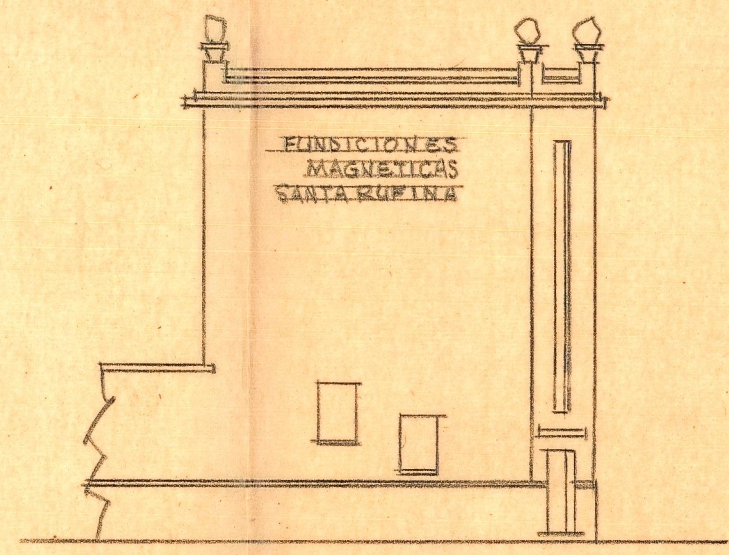


FUNDICIONES MAGNETICAS "SANTA RUFINA"  
VIVIENDAS EN ALFARA DEL PATRIARCA = E = 1:200

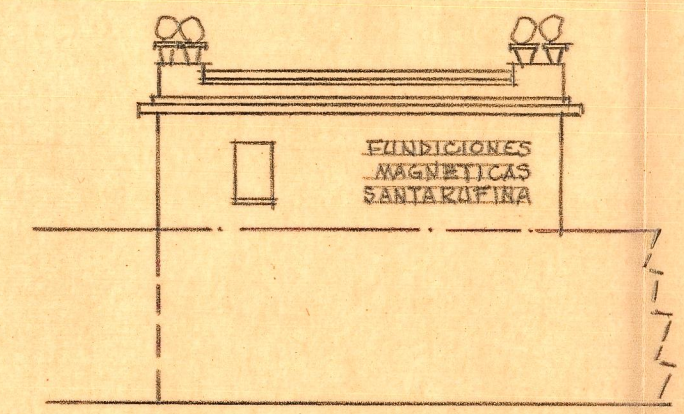
*Valencia 14 Abril de 1956*  
EL ARQUITECTO



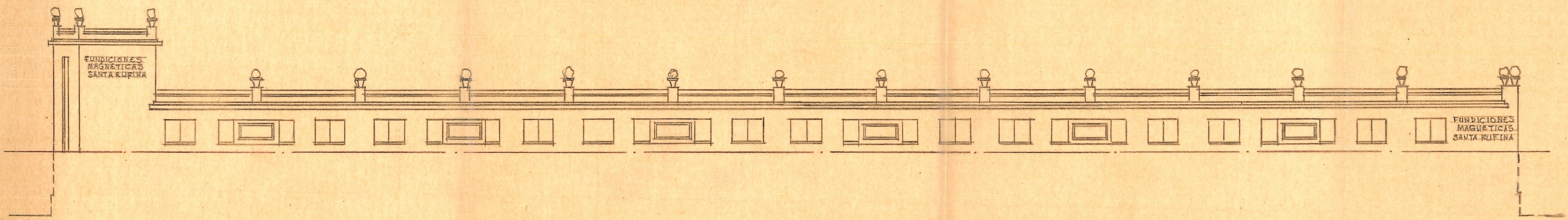
*Sección transversal*



*Fachada lateral*



*Fachada lateral*



*Fachada principal*