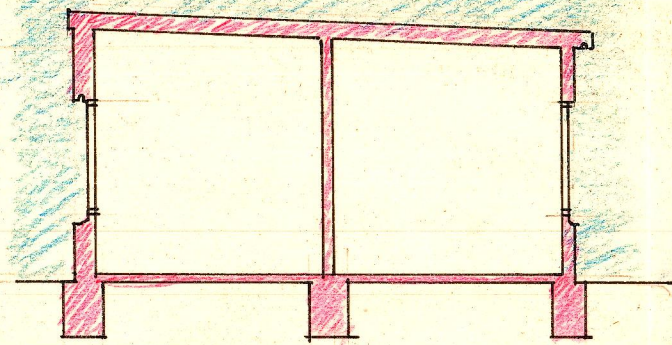
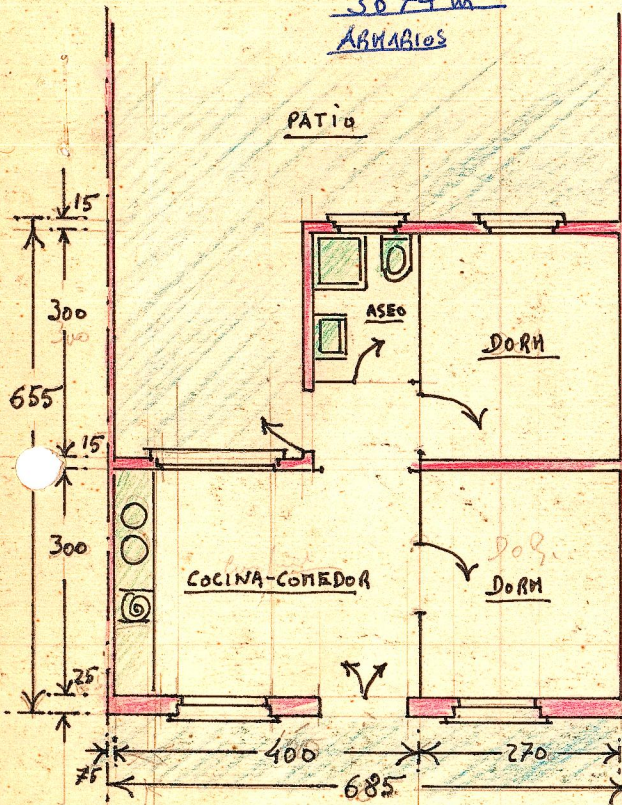


FACHADA



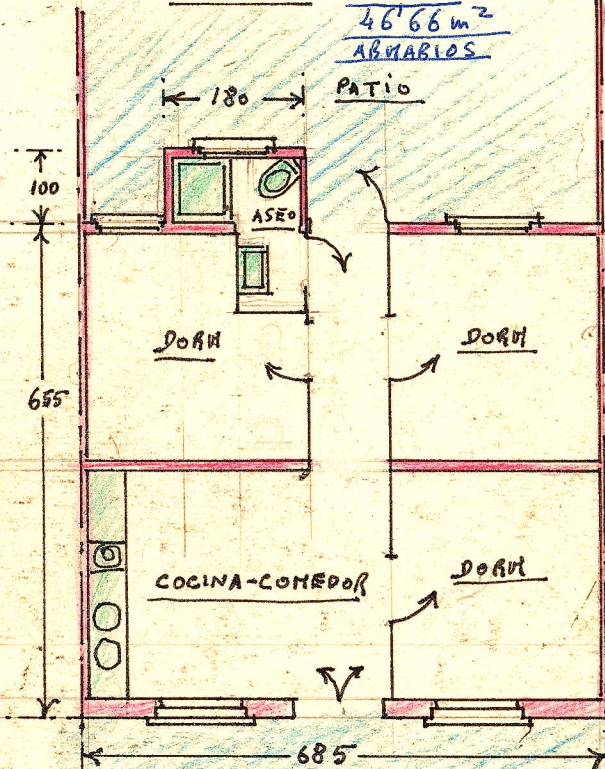
SECCION

$$\begin{aligned}
 3'15 \times 1'50 &= 4'72 \\
 4'075 \times 3'40 &= 13'85 \\
 6'55 \times 2'775 &= 18'17 \\
 \hline
 &= 36'74 \text{ m}^2 \\
 &\text{ABITABILIOS}
 \end{aligned}$$



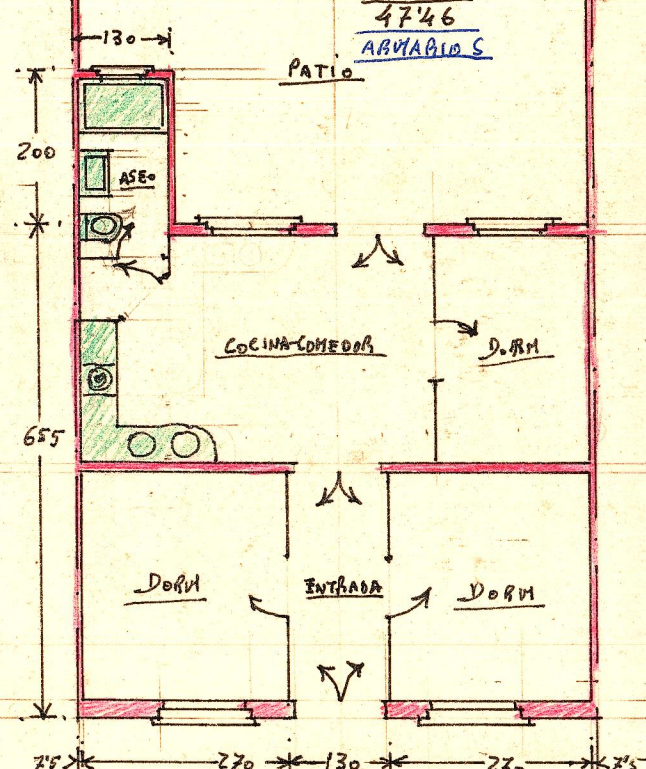
DISPOSICION

$$\begin{aligned}
 6'55 \times 6'85 &= 44'86 \\
 1'80 \times 1'00 &= 1'80 \\
 \hline
 &= 46'66 \text{ m}^2 \\
 &\text{ABITABILIOS}
 \end{aligned}$$



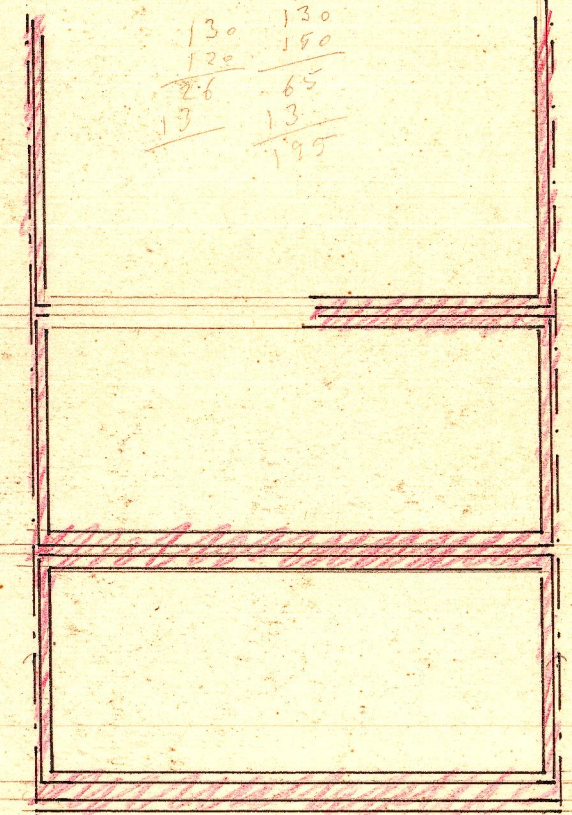
DISPOSICION

$$\begin{aligned}
 6'55 \times 6'85 &= 44'86 \\
 1'30 \times 2'00 &= 2'60 \\
 \hline
 &= 47'46 \\
 &\text{ABITABILIOS}
 \end{aligned}$$



DISPOSICION

$$\begin{array}{r}
 130 \\
 120 \\
 \hline
 260 \\
 13 \\
 \hline
 273
 \end{array}
 \qquad
 \begin{array}{r}
 130 \\
 150 \\
 \hline
 280 \\
 65 \\
 \hline
 345 \\
 13 \\
 \hline
 358
 \end{array}$$



CIMENTOS Y DESAGUES

$$\begin{array}{r}
 15 \\
 27 \\
 \hline
 42 \\
 685
 \end{array}$$