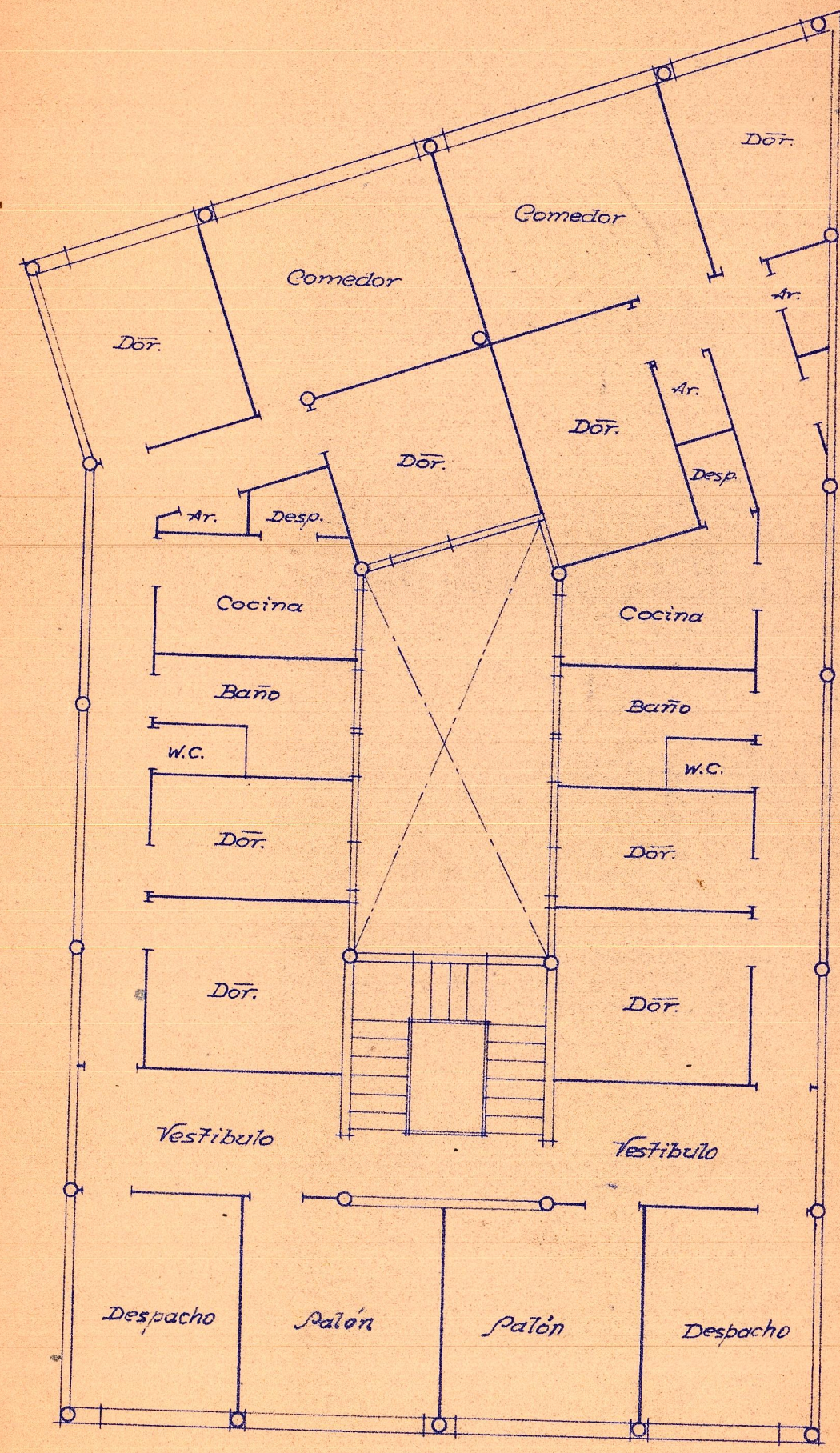
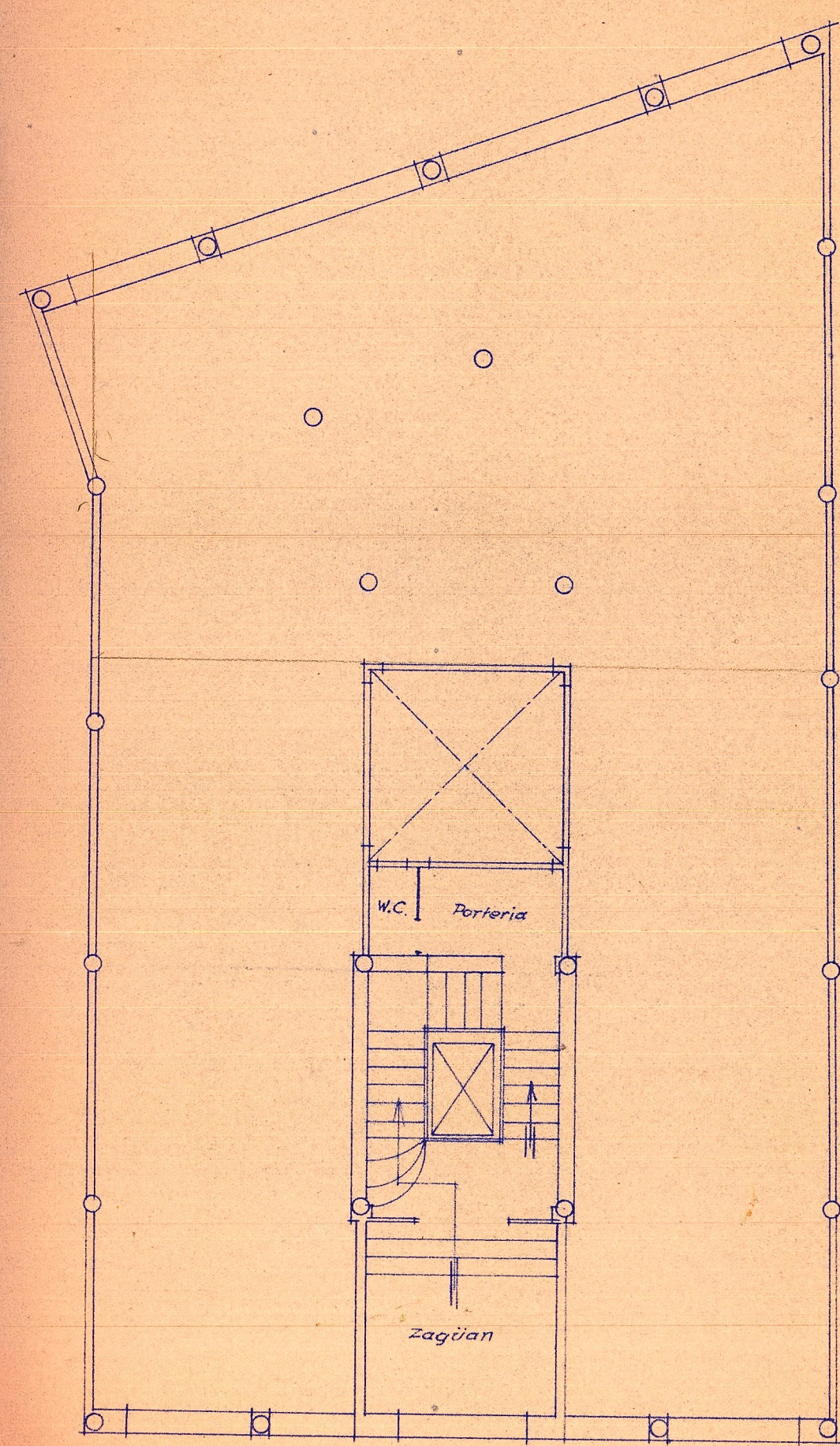


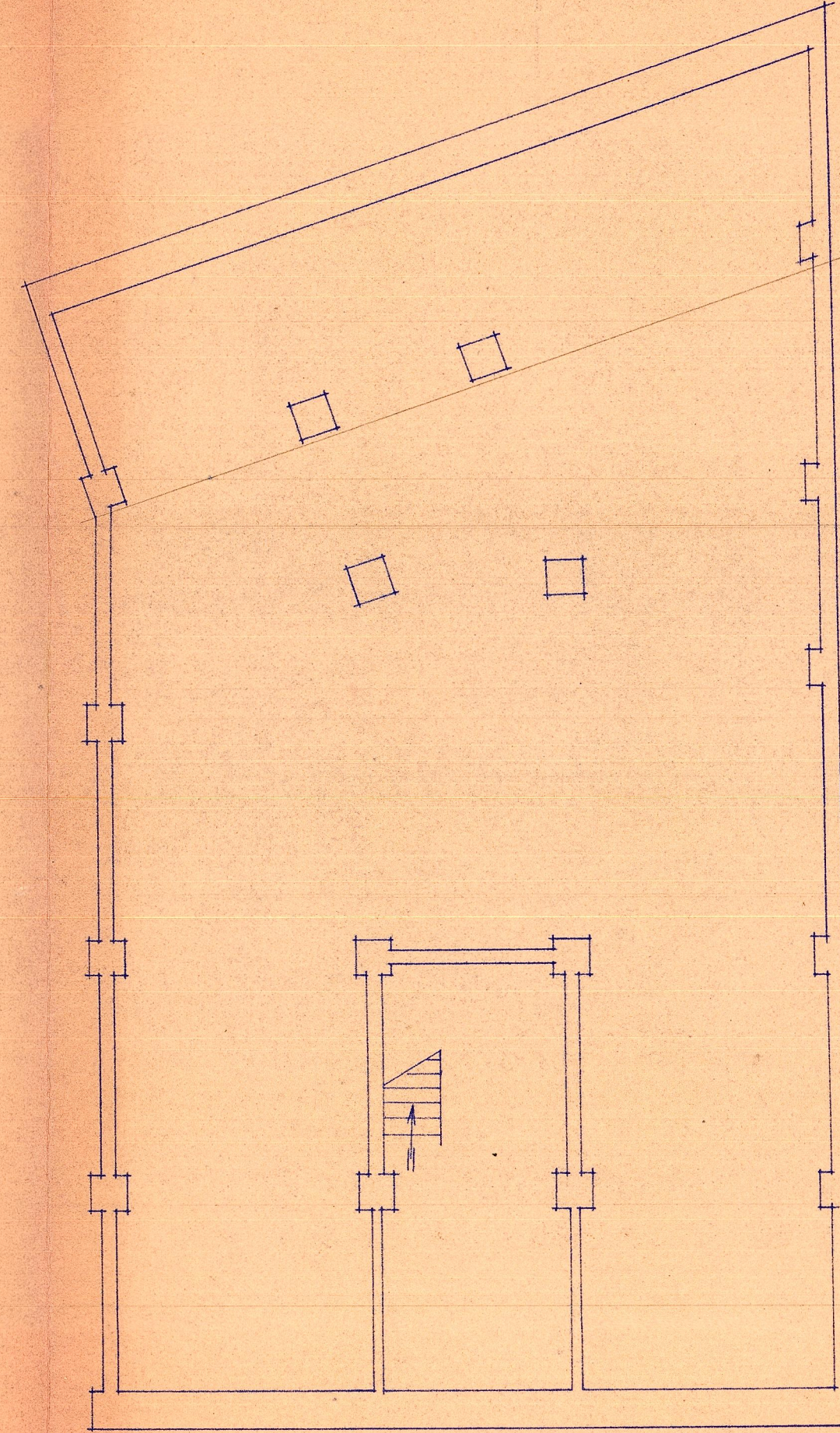
*Proyecto de edificio con fachada a las
calles de San Vicente y Ribalta*



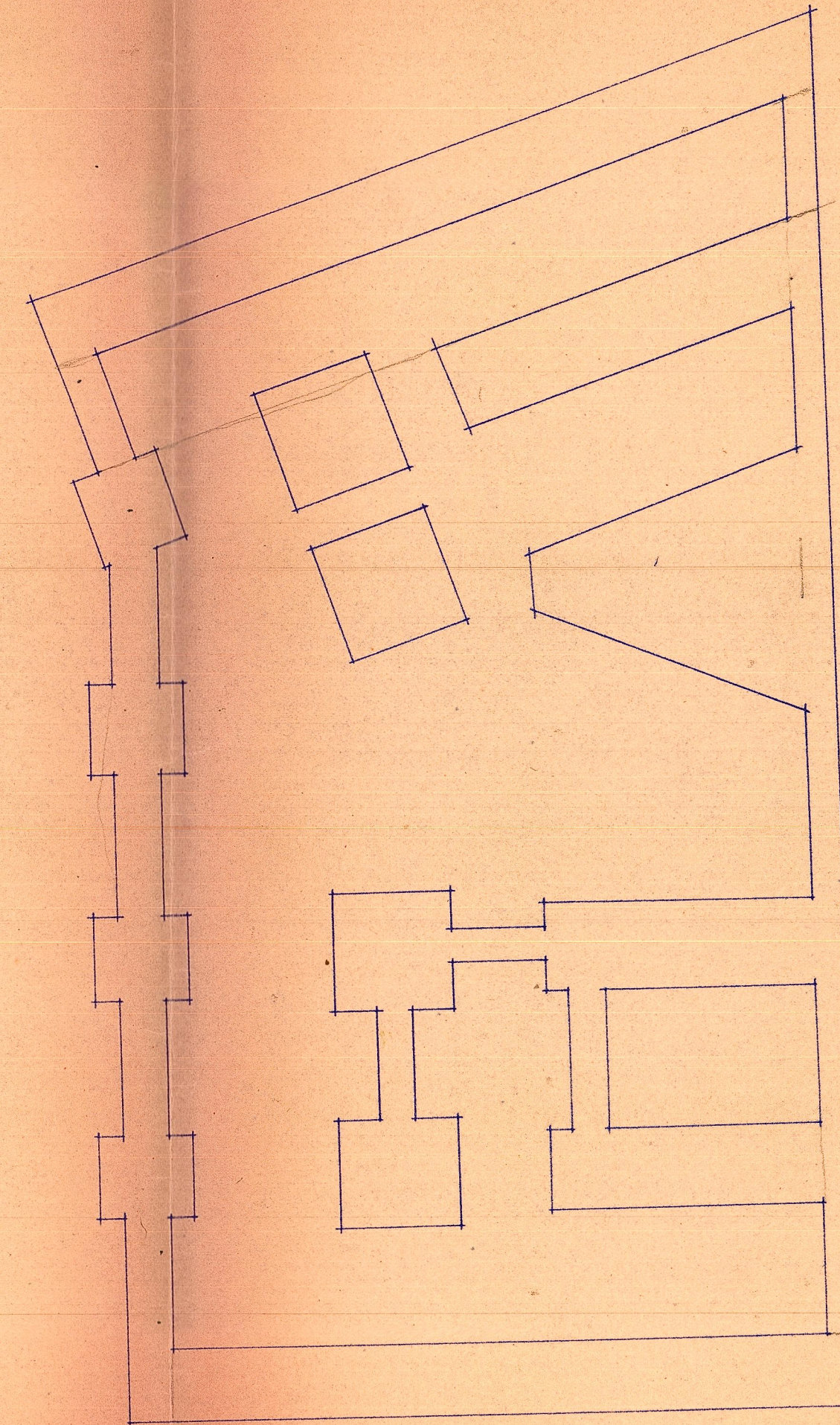
PLANTA ENTRESUELO



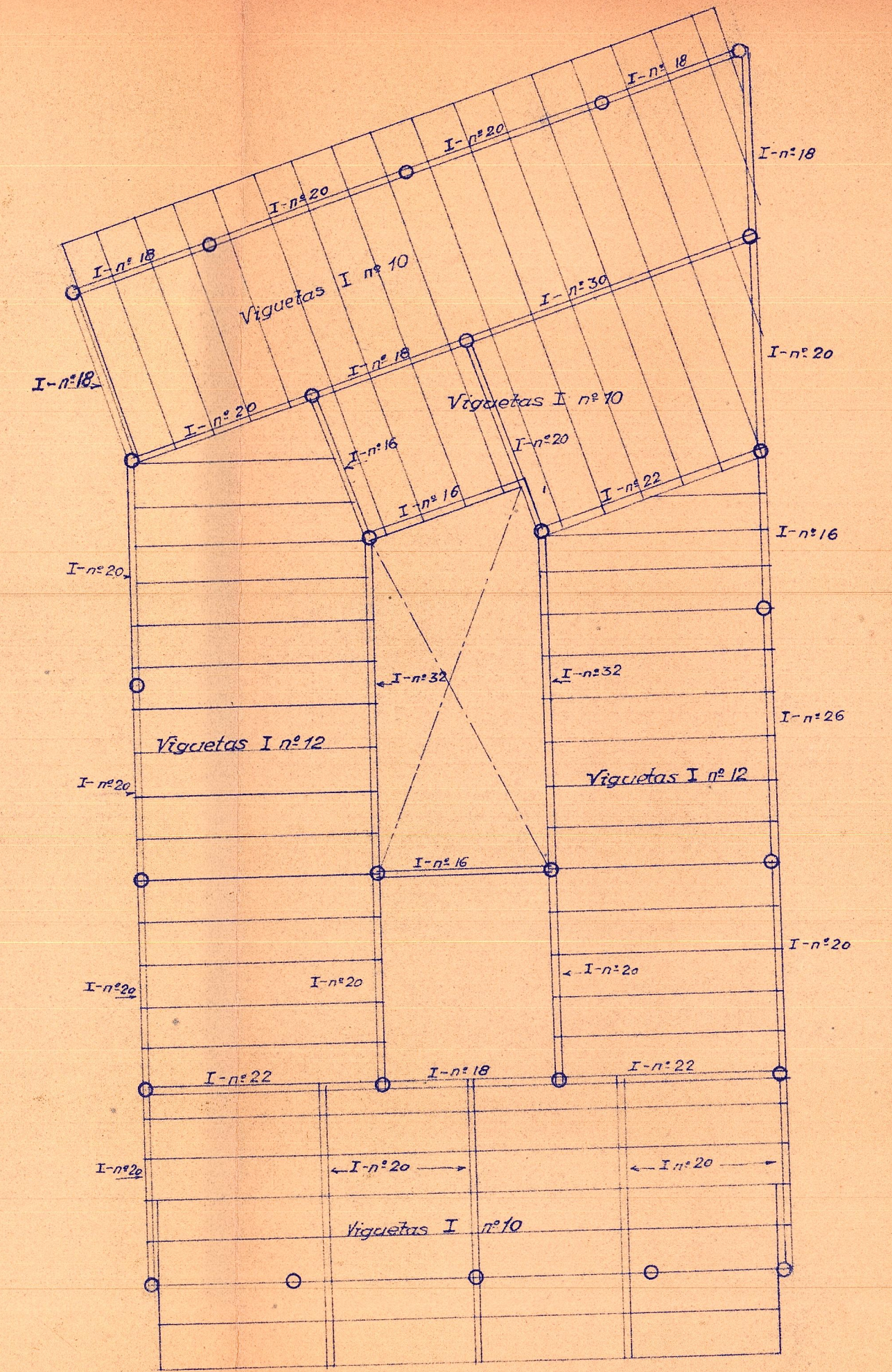
PLANTA BAJA



PLANTA DE POTAMO



PLANTA DE CIMENTOP



PLANTA DE ENTRAMADO

Escala 1:100
Valencia Mayo 1936.
Los Arquitectos.