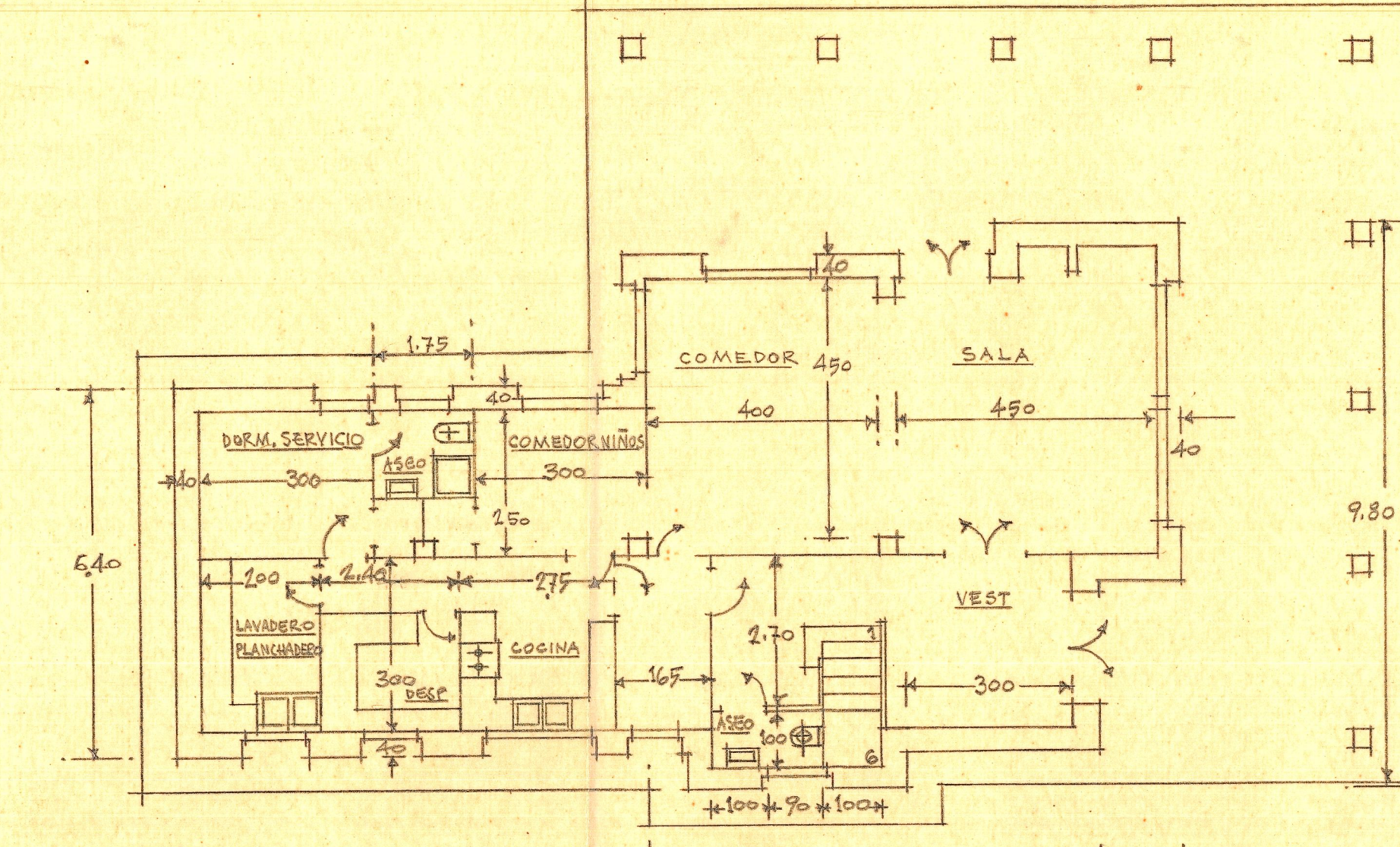
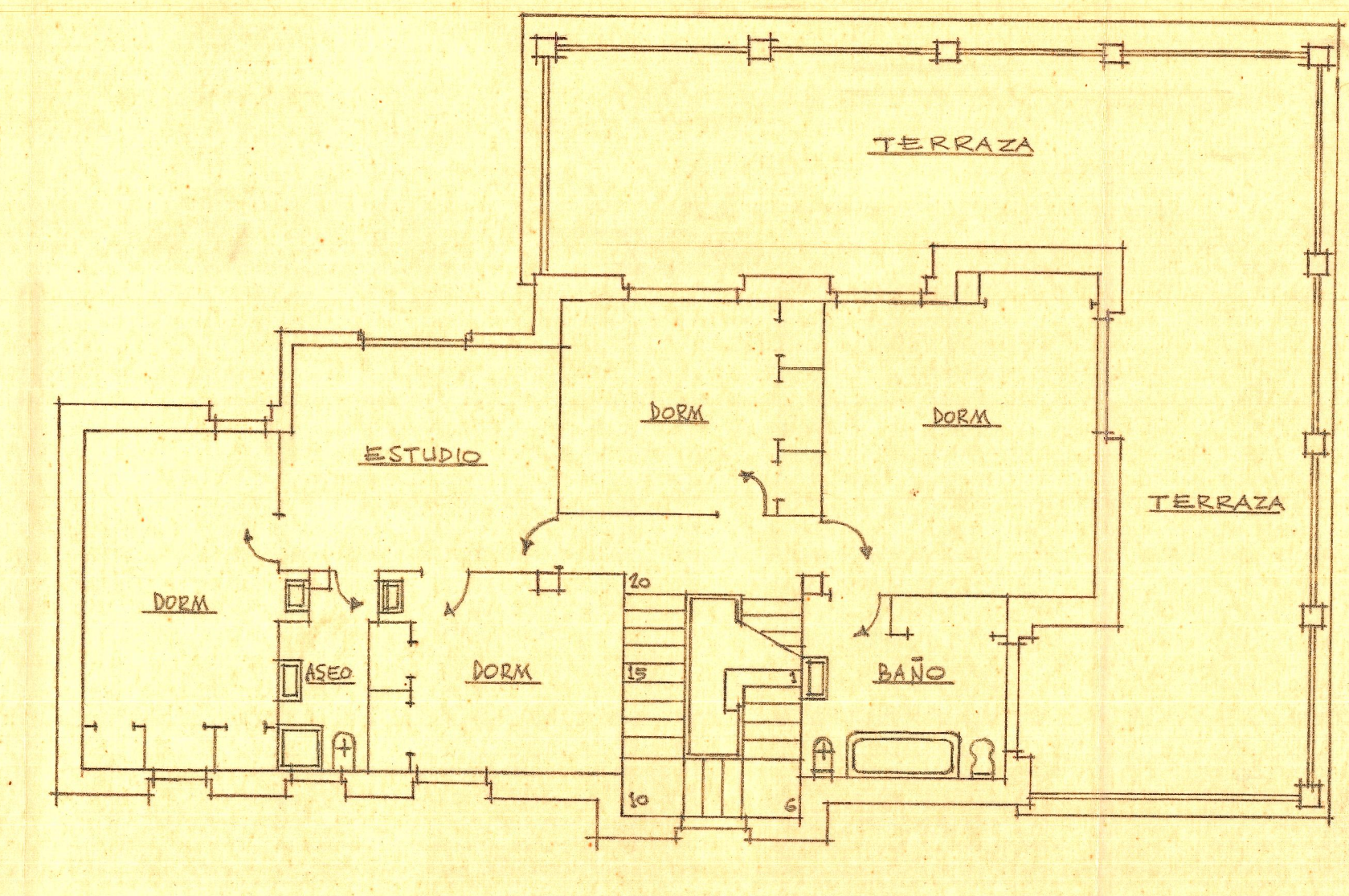


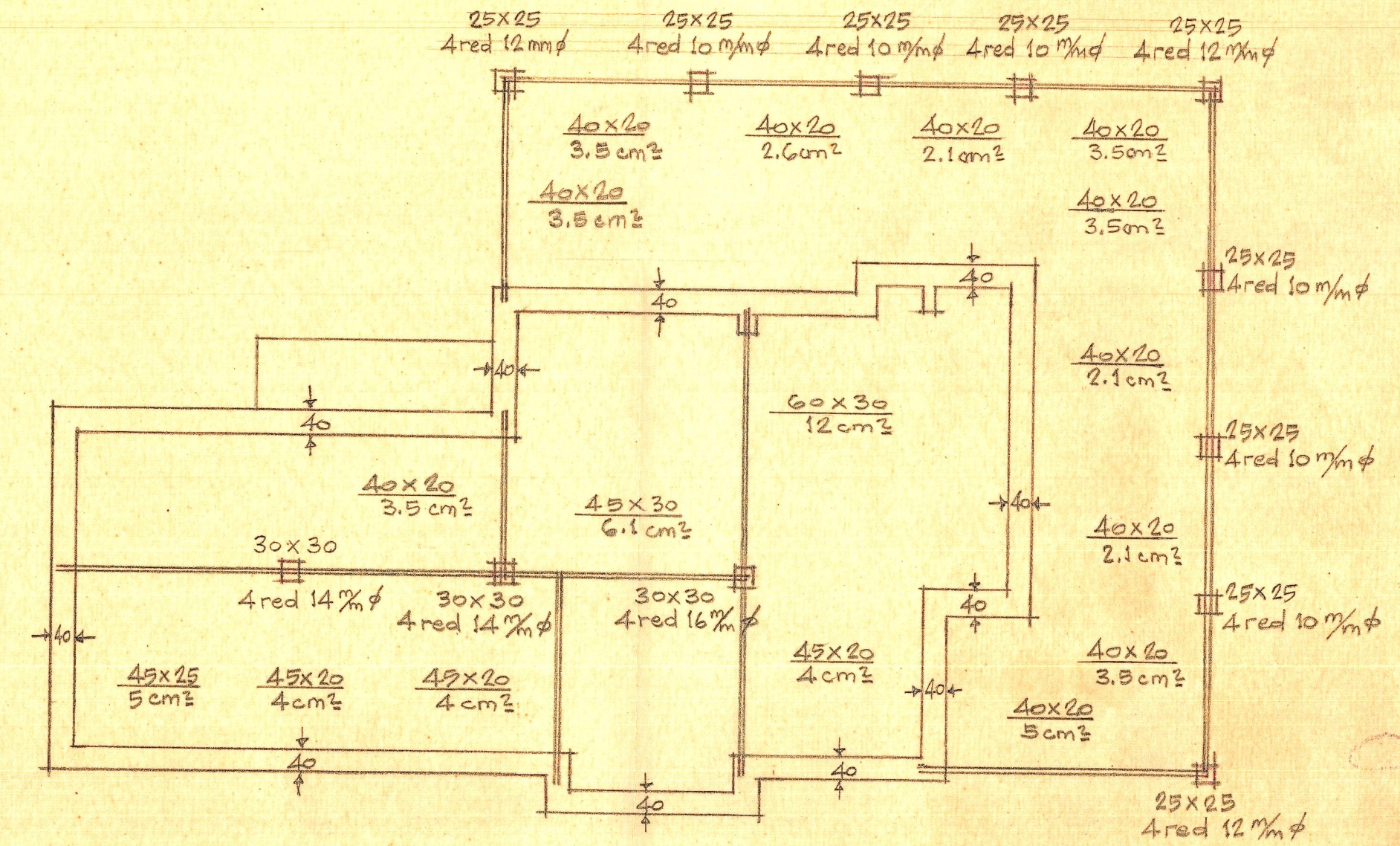
Planta de cimentación y desagües



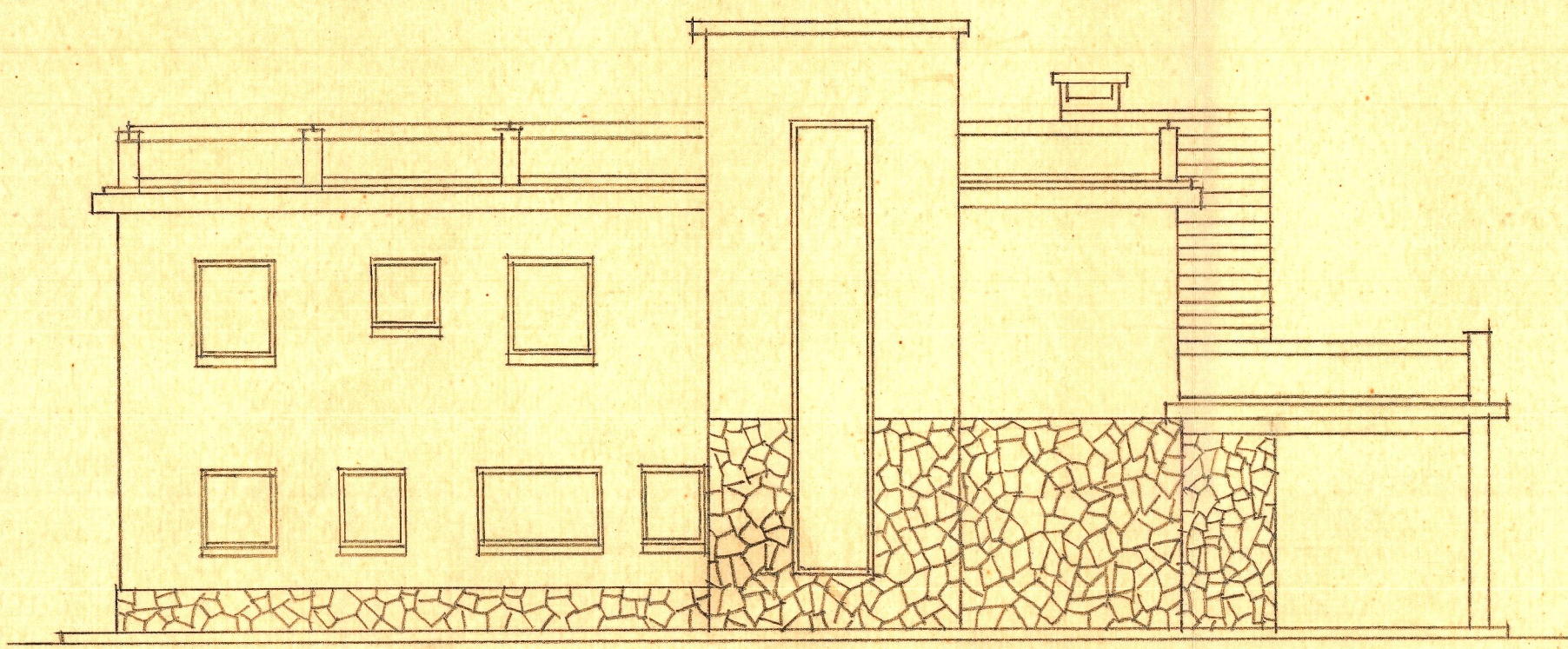
Planta baja



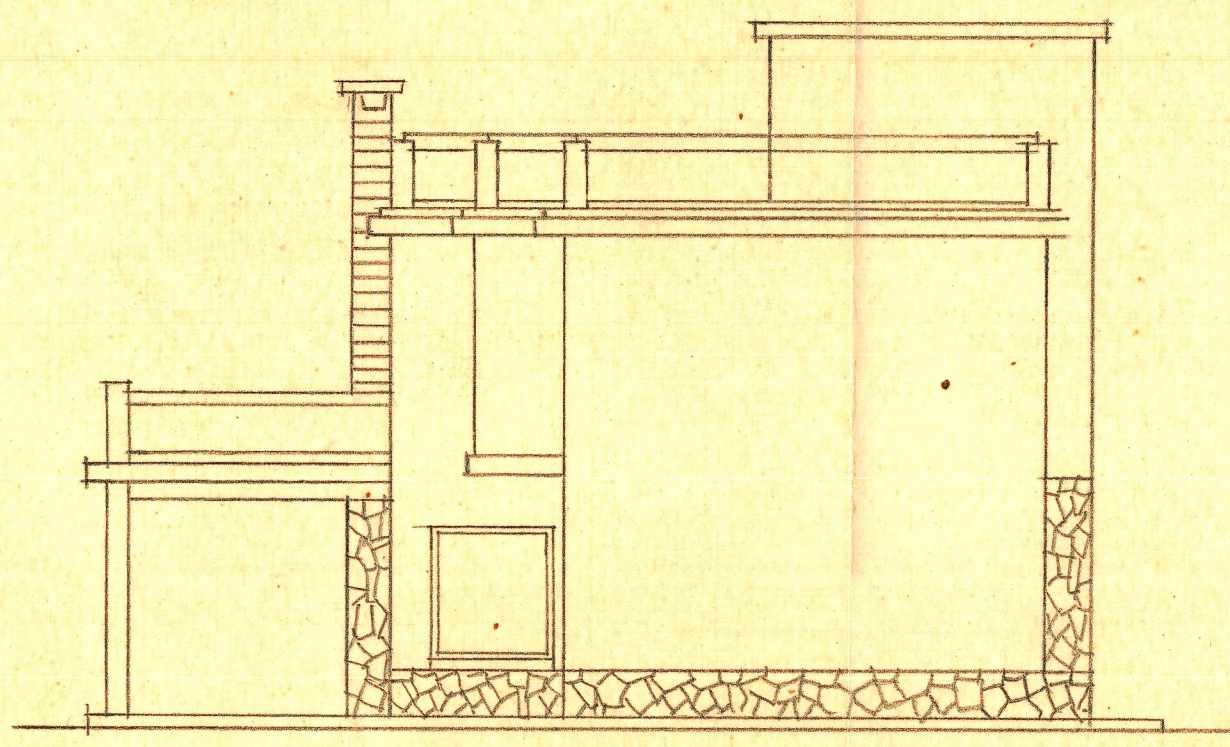
Planta alta



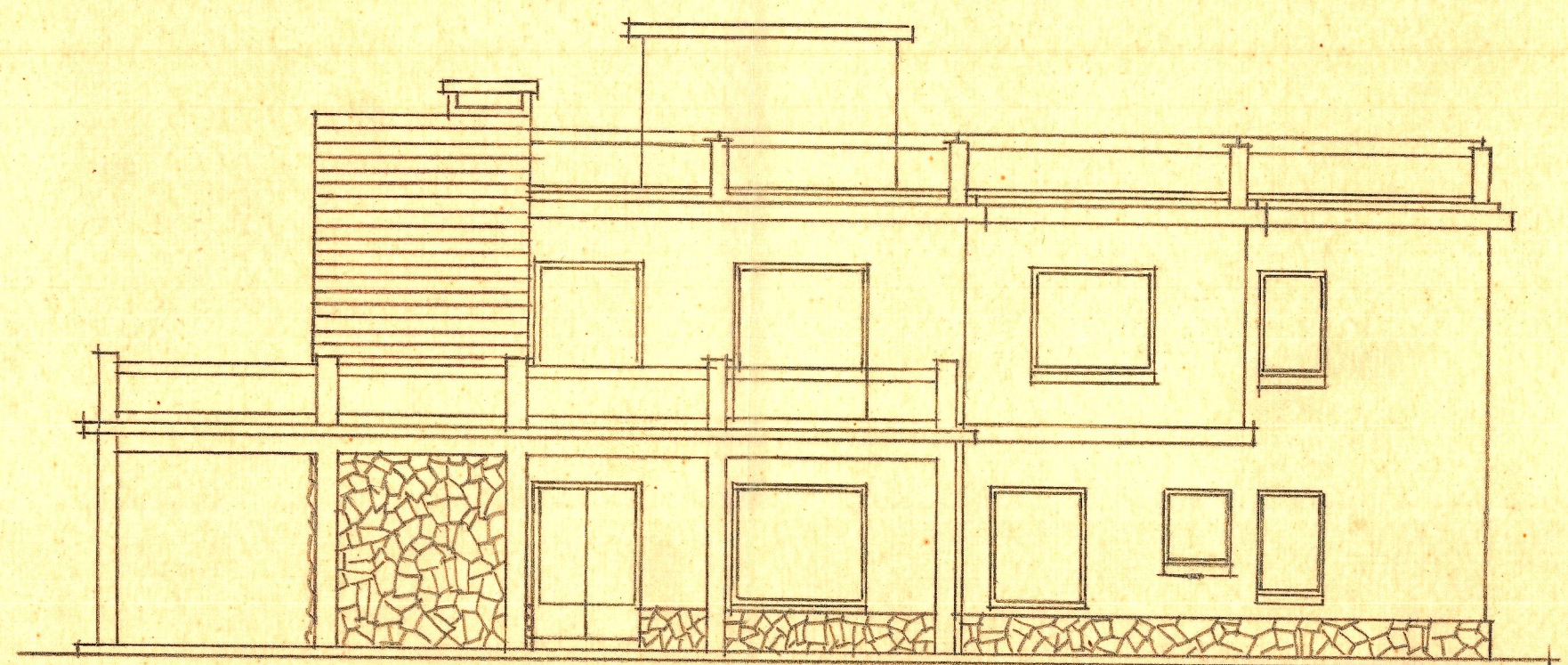
Estructura de fijas y terrazas
Placas armadas aligeradas y flechas y placas de losa



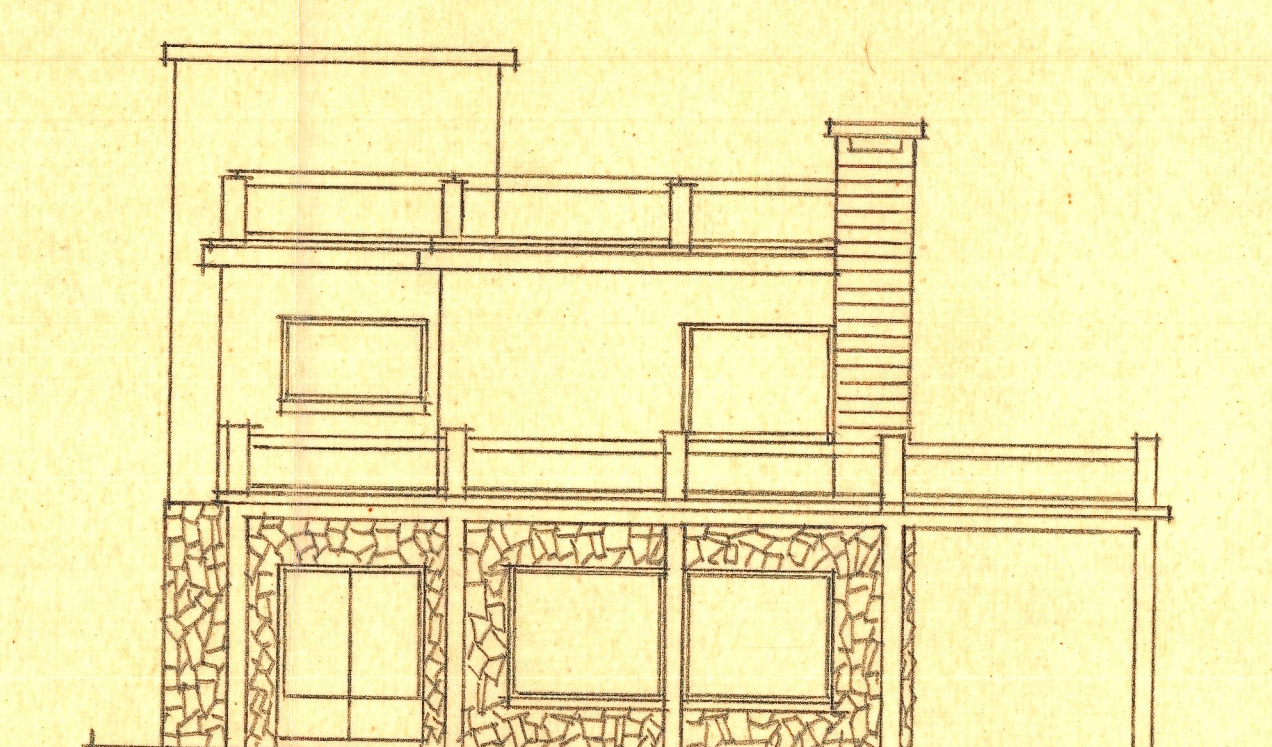
lateral derecha



lateral



lateral izquierda



frente

VIVIENDA EN PATERNA
 ESCALA=1:100
 Valencia y Diciembre de 1961
 EL ARQUITECTO