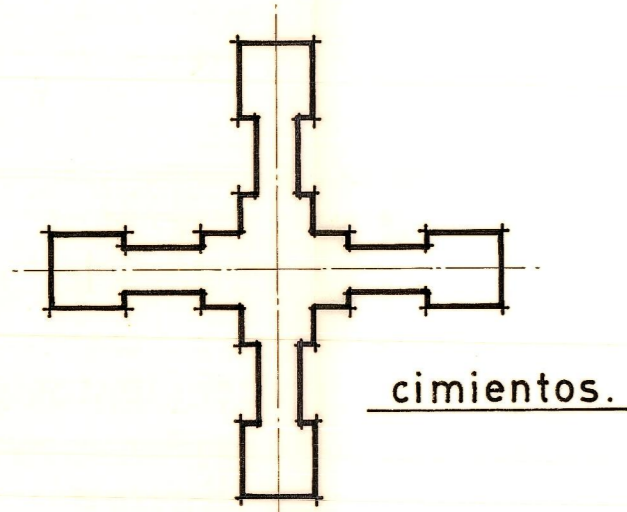
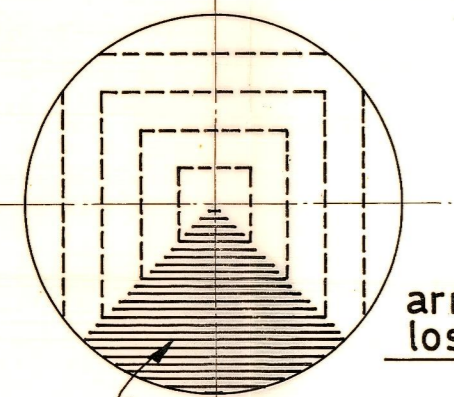


DEPÓSITOS.
escala=1:100.

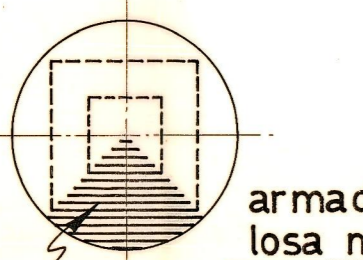


cimientos.



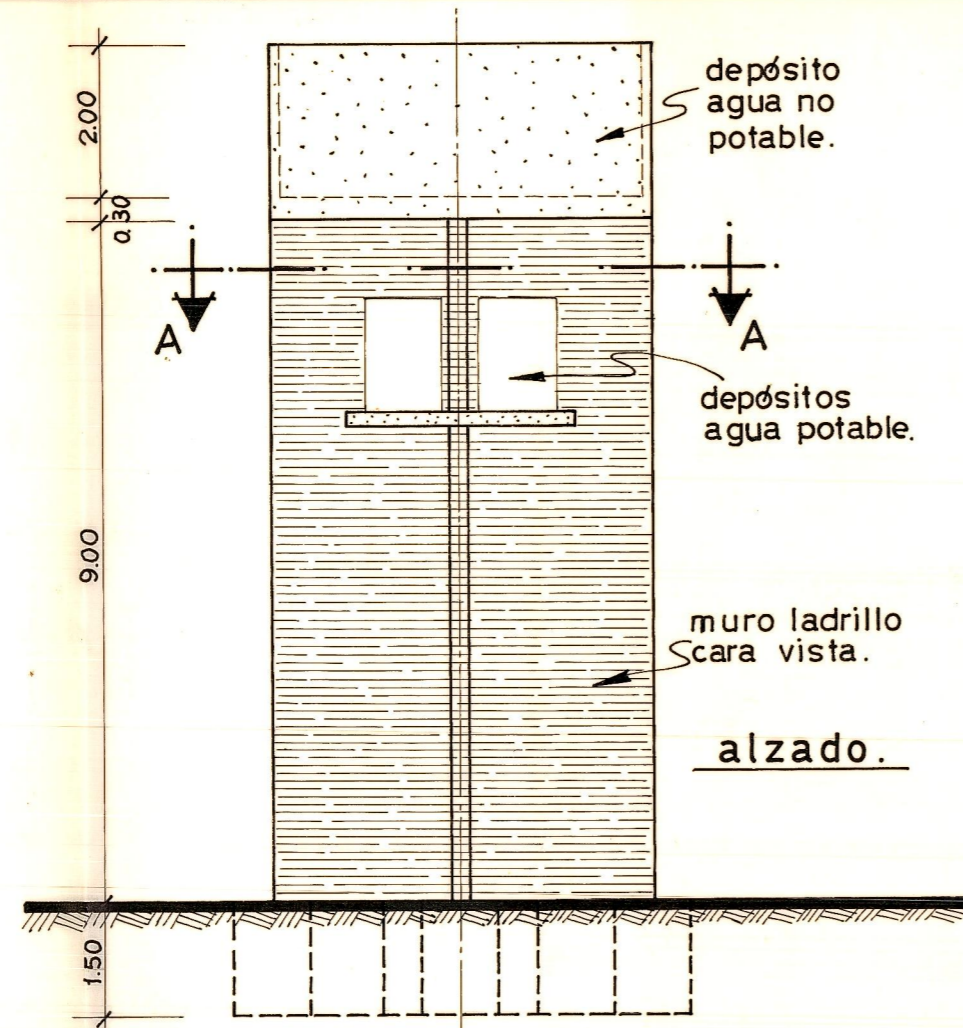
armadura losa mayor.

10 ϕ 16 por metro.

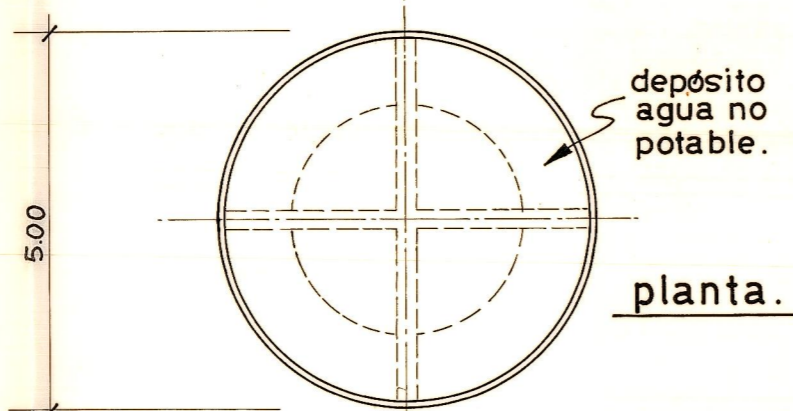


armadura losa menor.

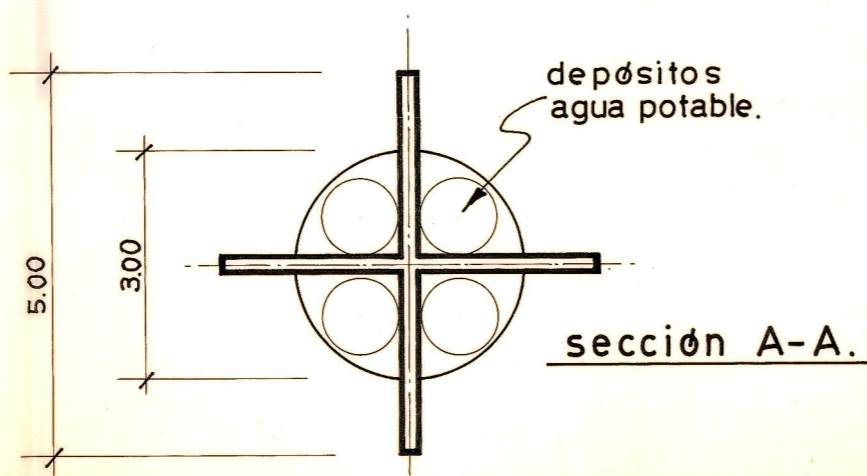
10 ϕ 14 por metro.



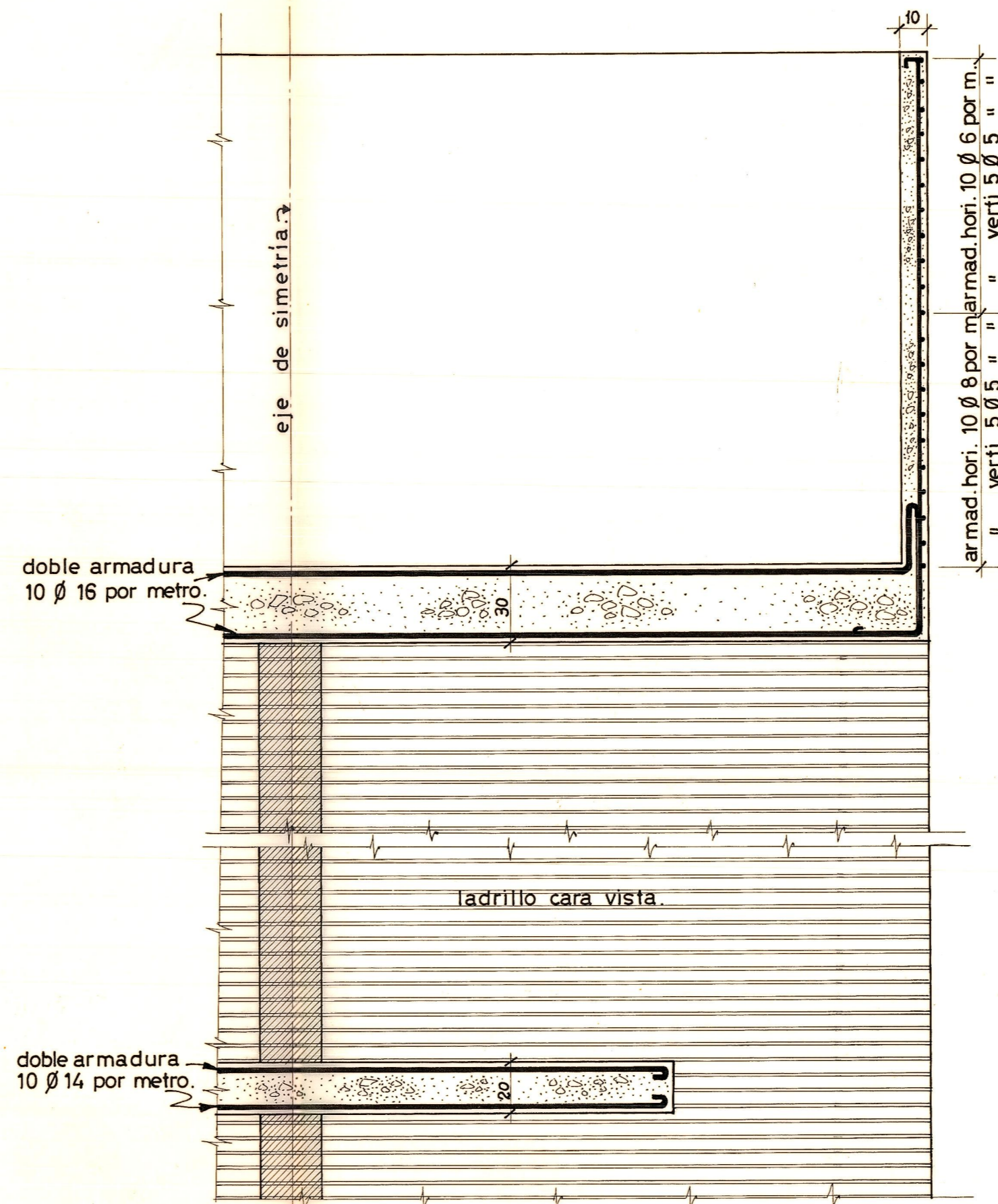
alzado.



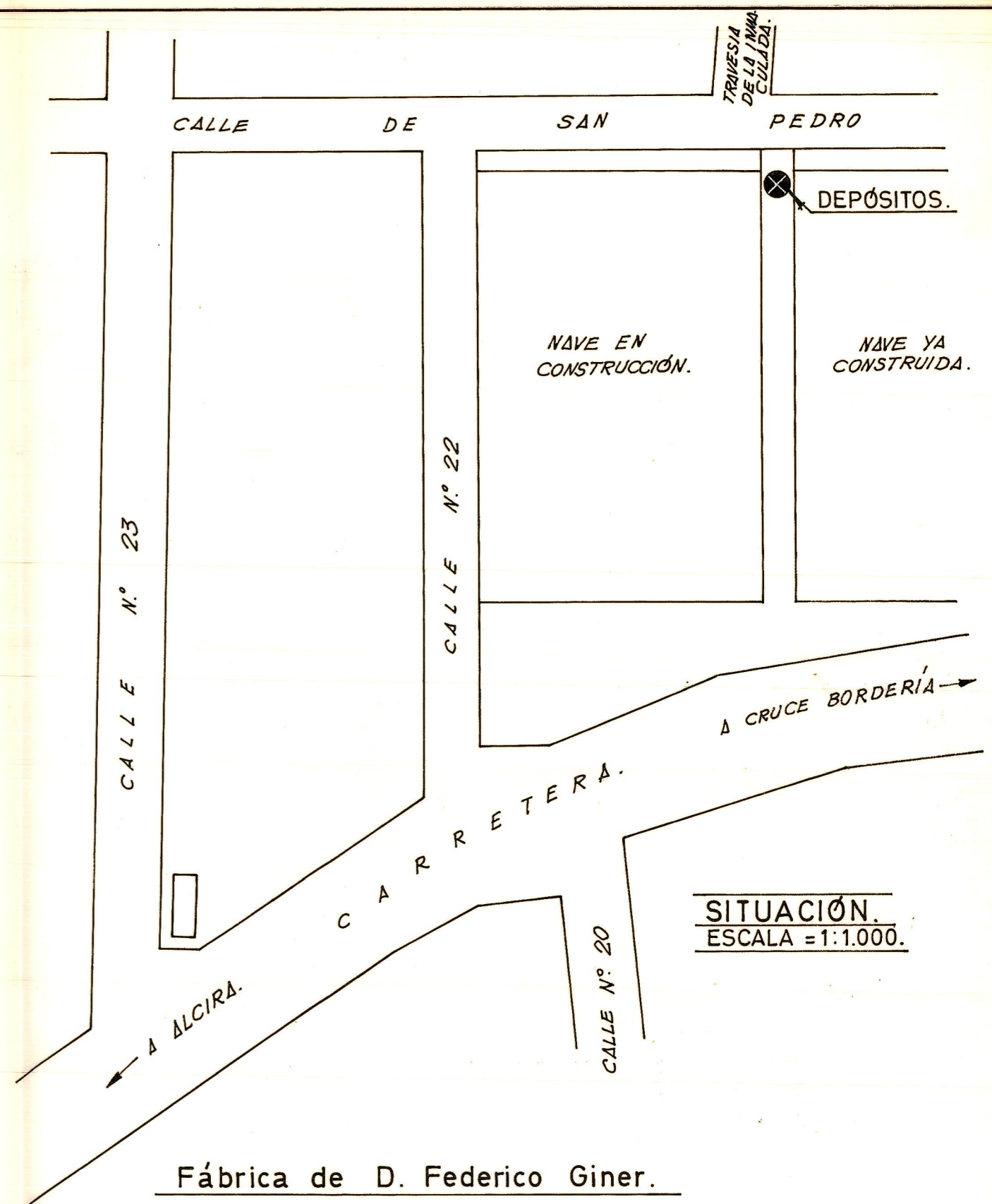
planta.



sección A-A.



DETALLE DEPÓSITO Y LOSAS. escala=1:20.



SITUACIÓN.
ESCALA = 1:1.000.

Fábrica de D. Federico Giner.
DEPÓSITOS DE AGUA.
Tabernes de Valldigna.

Valencia - Septiembre - 1970.
El Arquitecto: