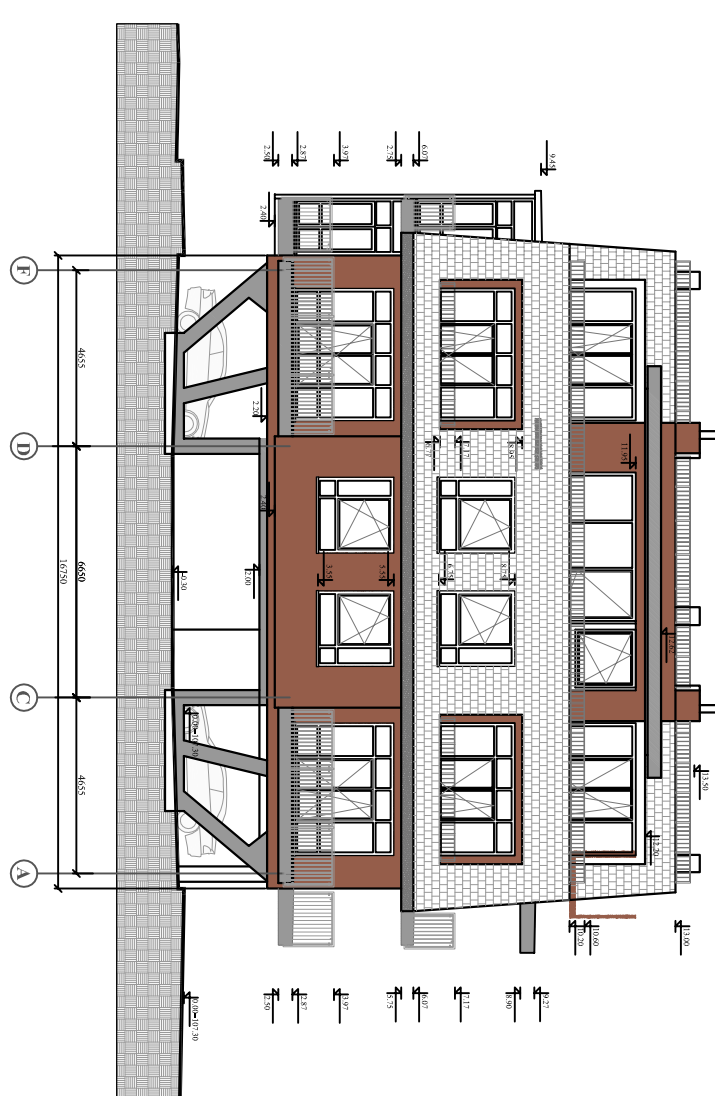
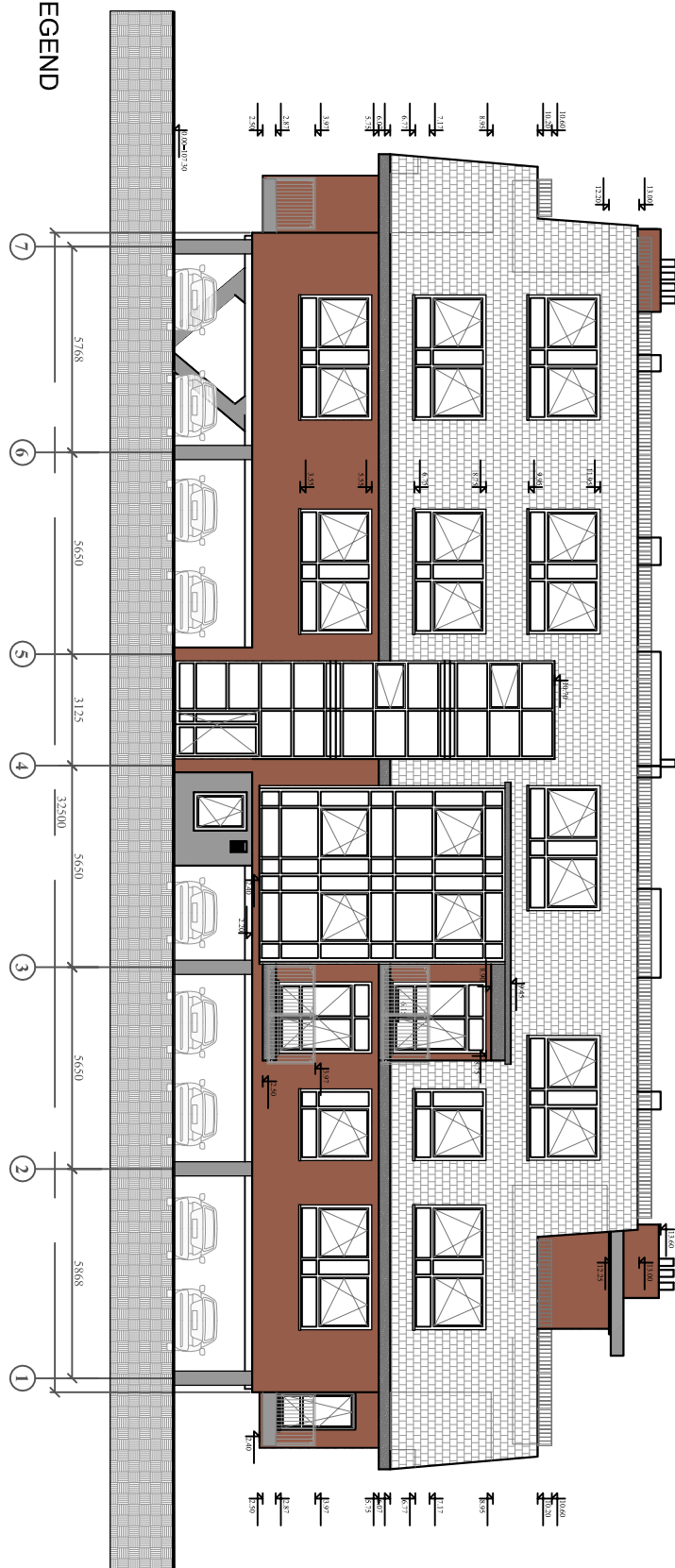
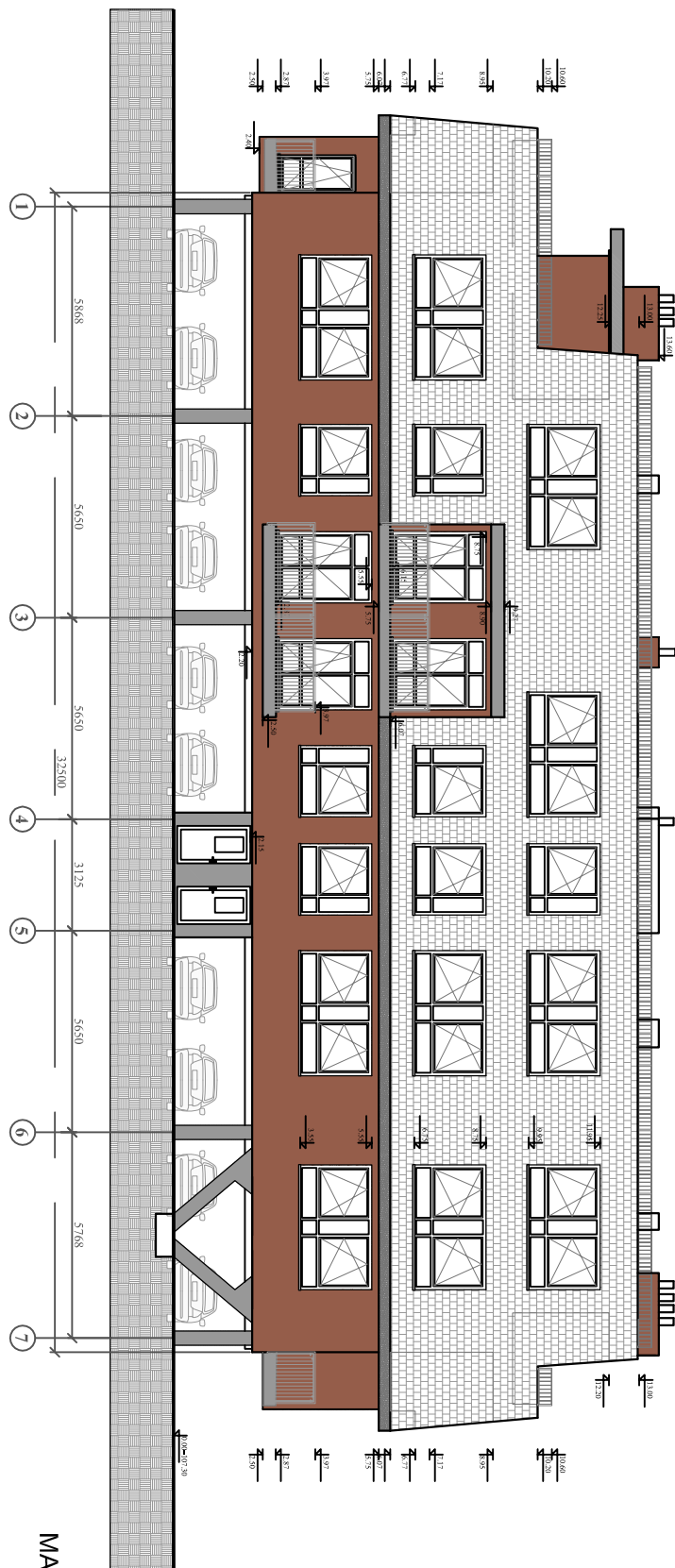
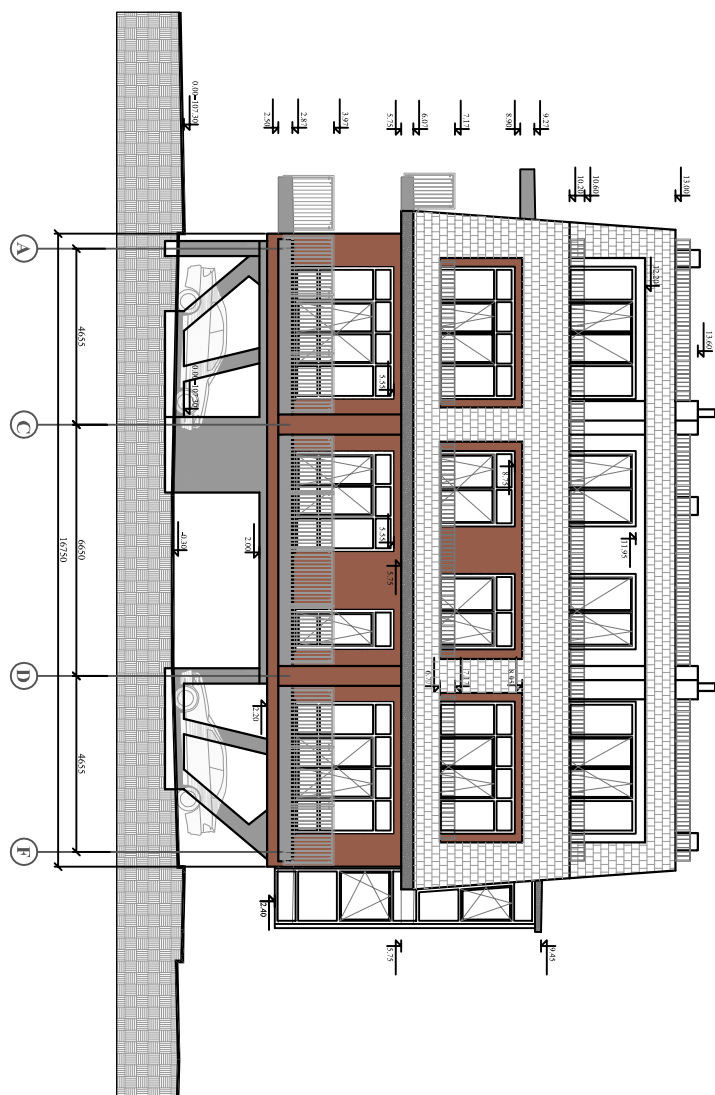


ARCHITECTURAL PART

FACADES S: 1/200

PRINCIPAL FACADE S: 1/200



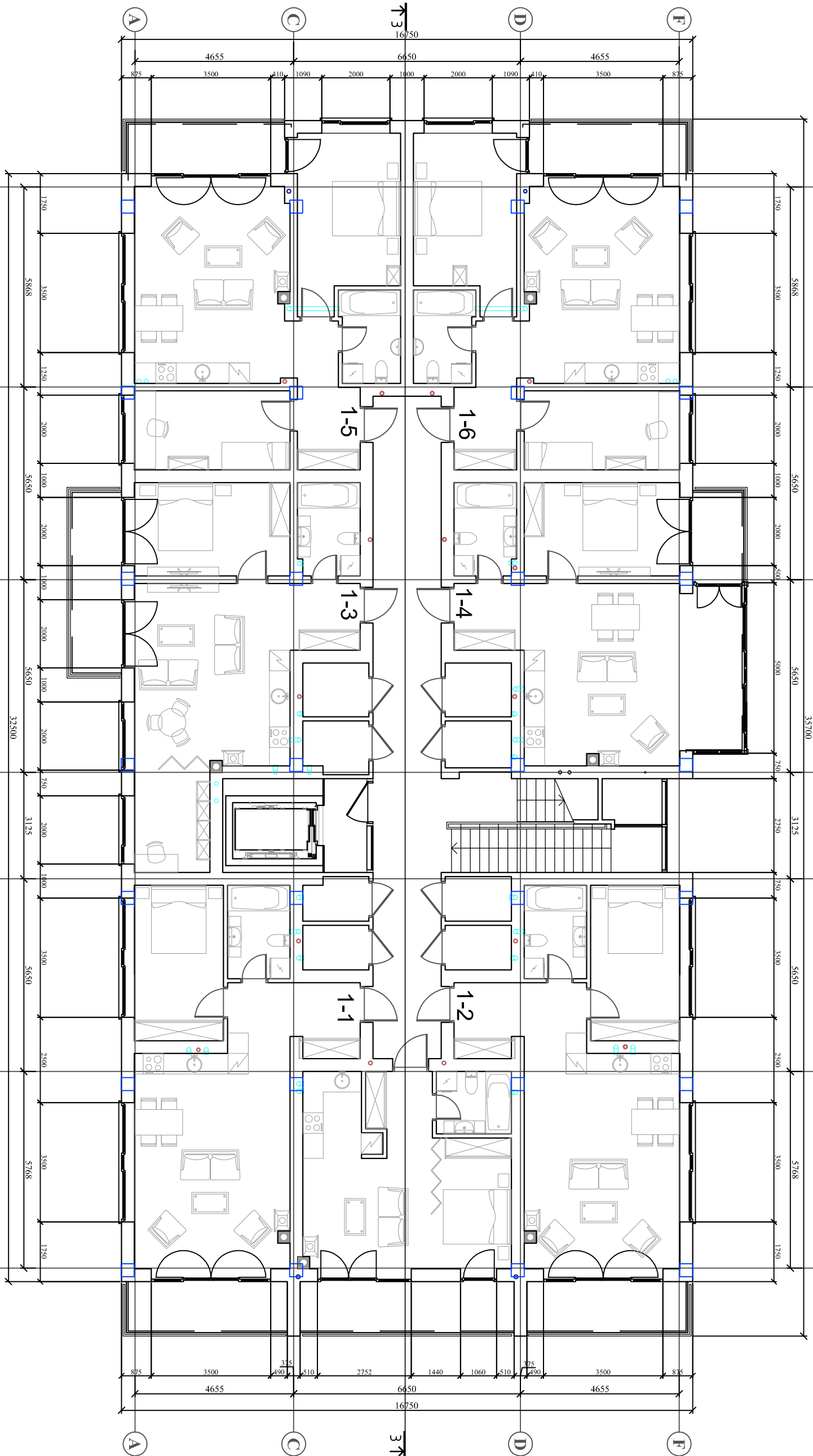
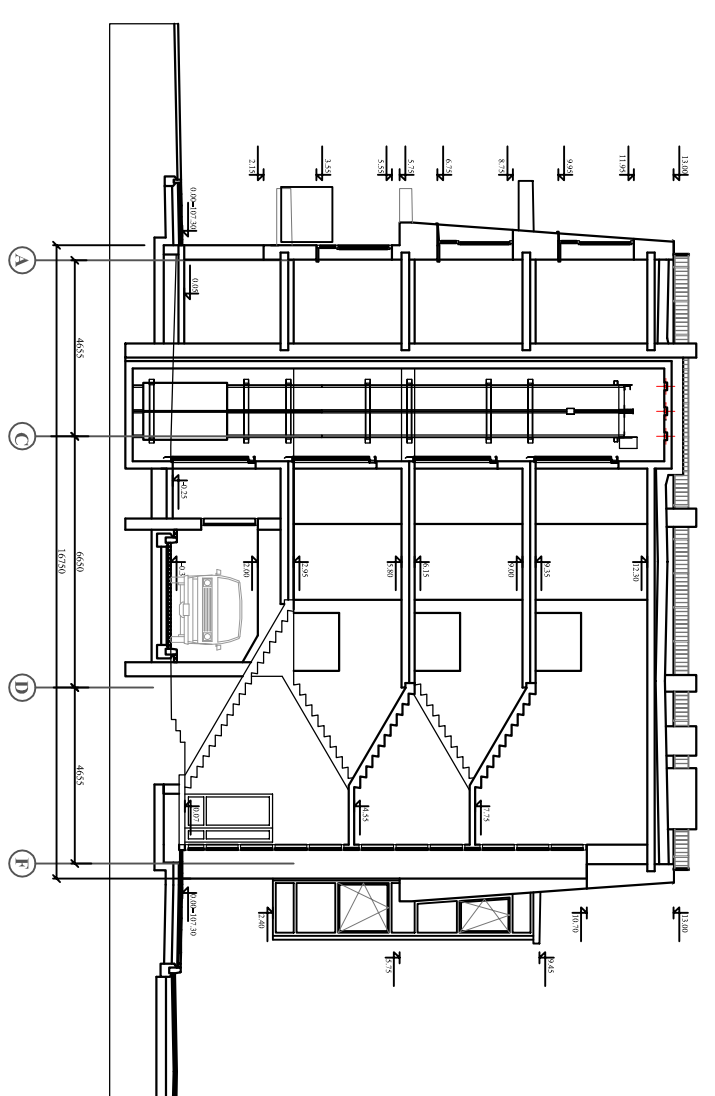
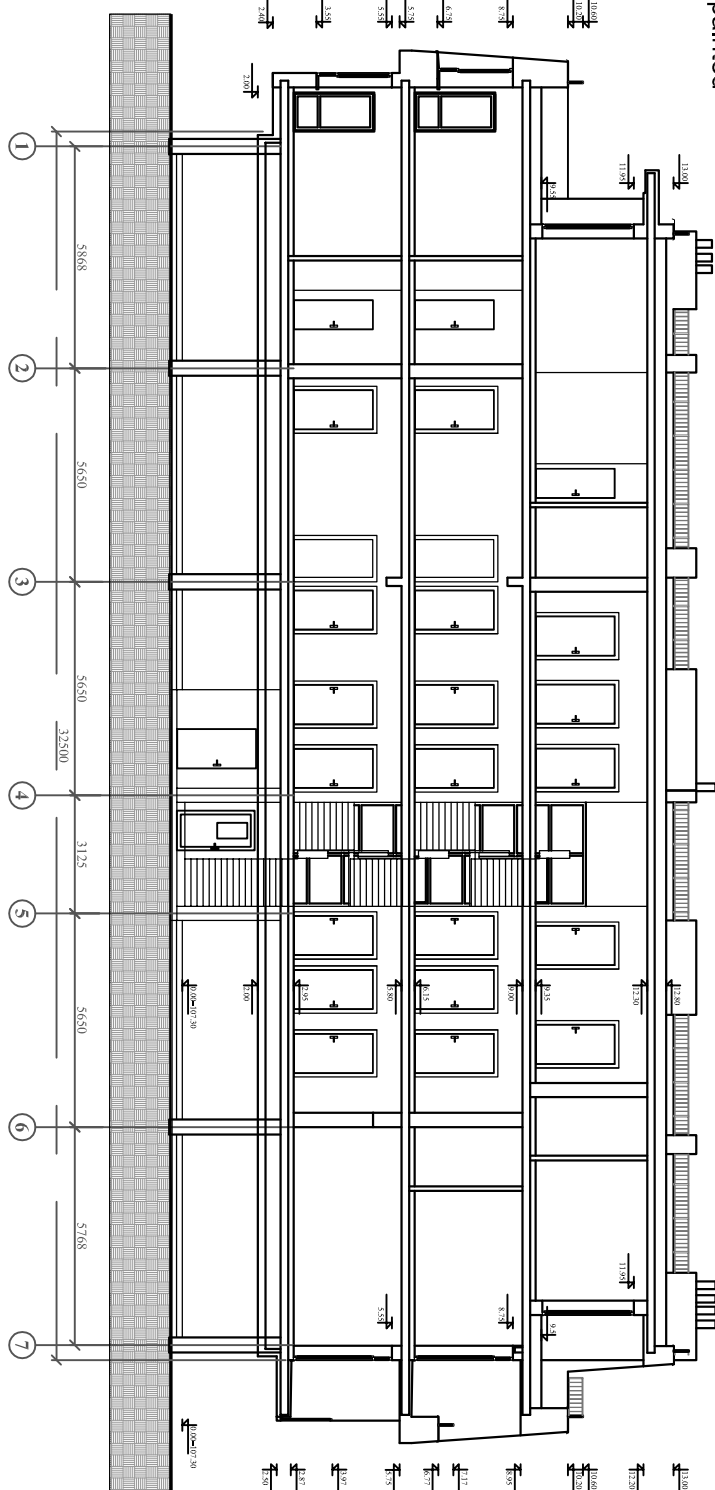
1 FLOOR S: 1/125

SECTION 3-3' S: 1/200

SECTION 2-2' S: 1/200

MATERIALS LEGEND

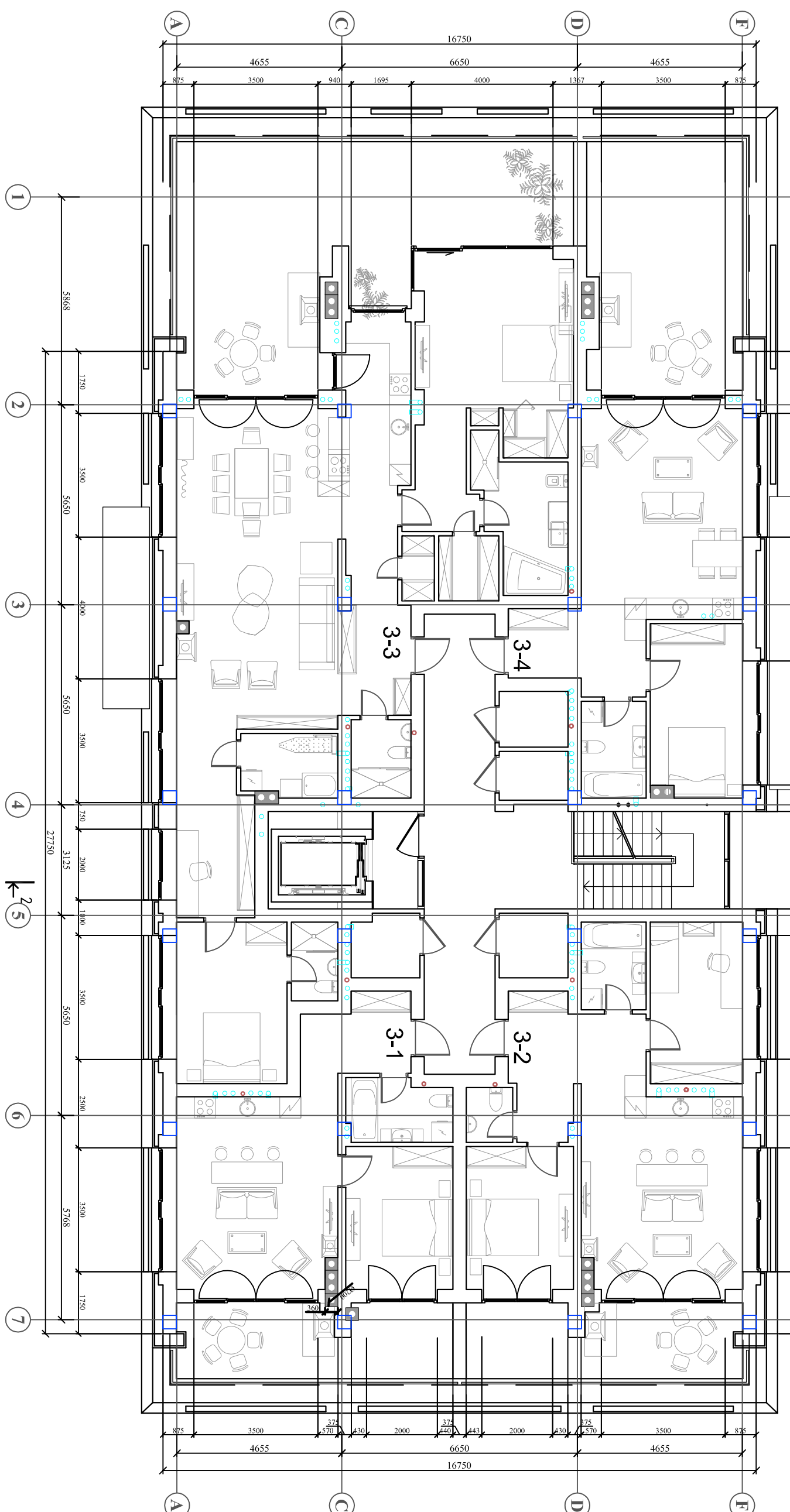
- Ceramic
- Slate tiles
- Plaster, painted



LEGEND OF ROOMS 1 FLOOR

LEGEND OF ROOMS 3 FLOOR

3 FLOOR S: 1/125



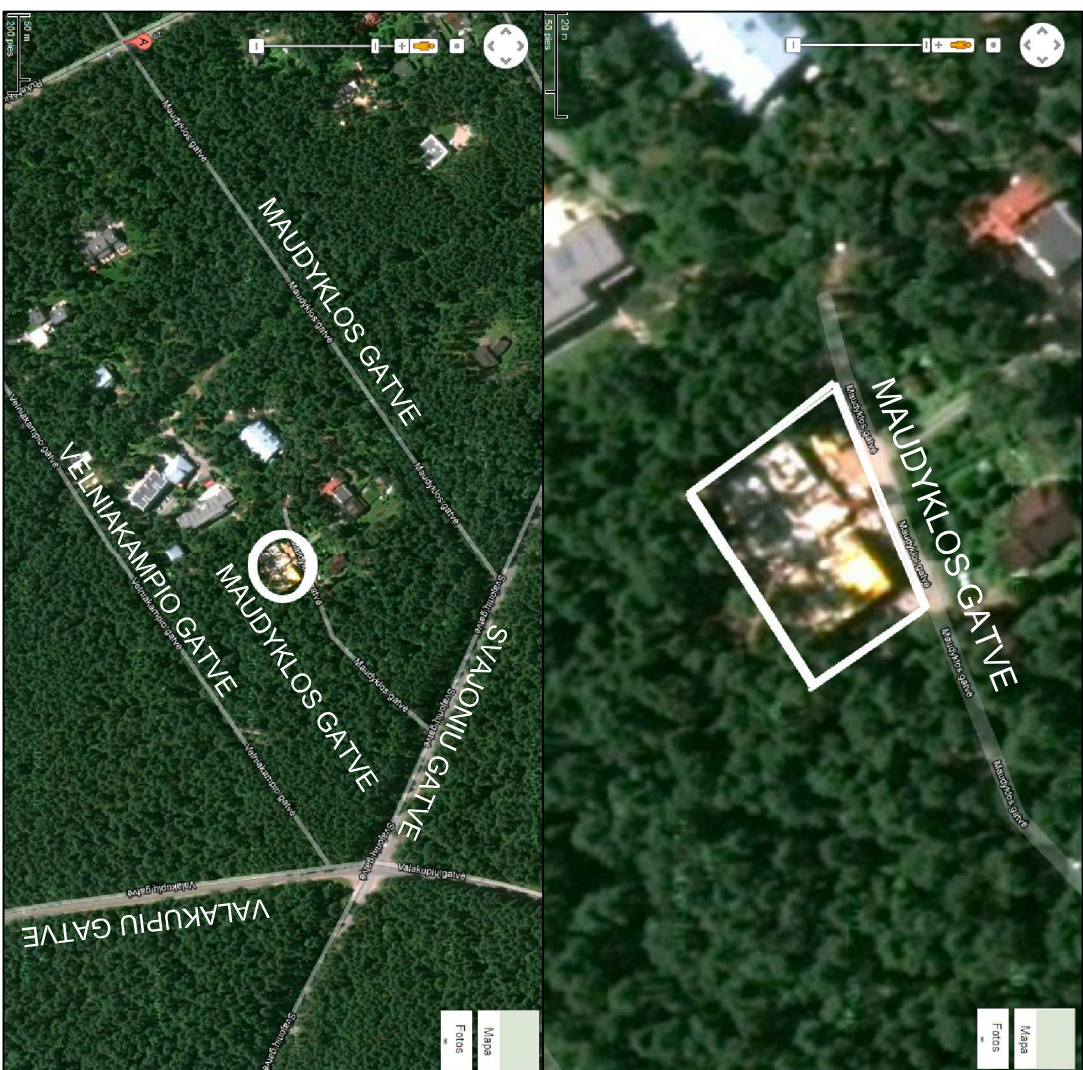
LEGEND OF ROOMS 1 FLOOR

LEGEND OF ROOMS 3 FLOOR

LEGEND OF ROOMS 1 FLOOR

LEGEND OF ROOMS 3 FLOOR

LOCATION OF BUILDING



NAME AND SURNAME	SIGNATURE	DATE	VILNIUS GEDIMINAS TECHNICAL UNIVERSITY			
STUDENT	Ignacio Maria Veguer Alfonso		ARCHITECTURAL PART			
SUPERVISOR	Jones Sopranasukas					
CONSULTANT						
HEAD OF DEPARTMENT						
REVIEWER			Department of Construction and Management			
			Page	Pages		