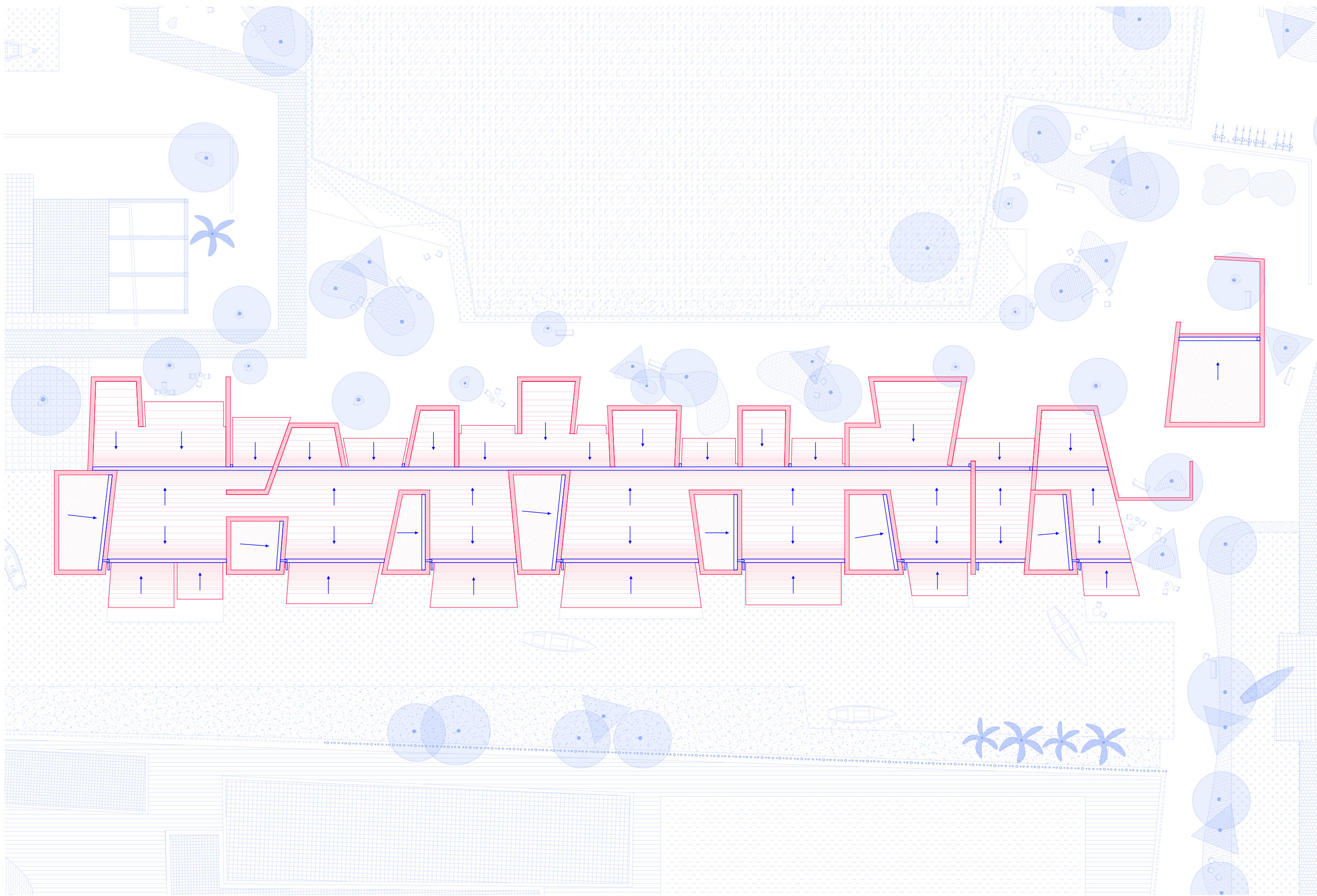
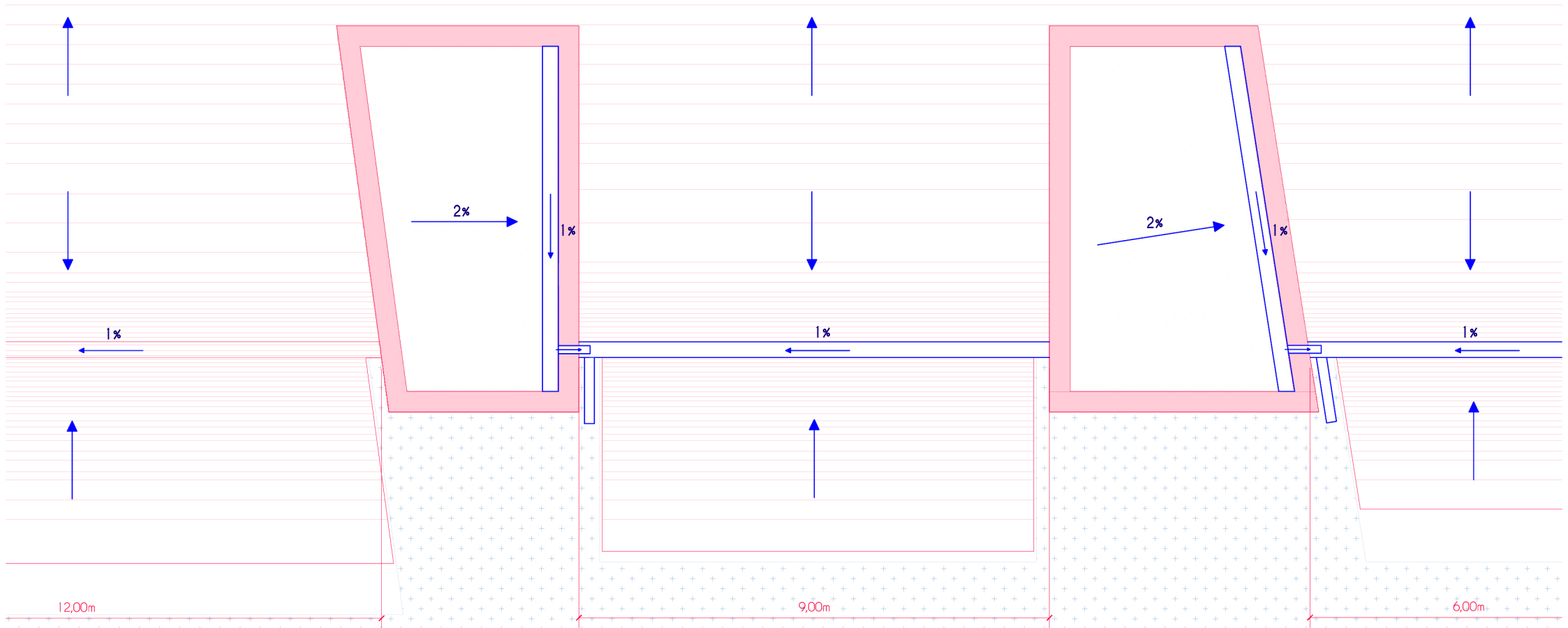
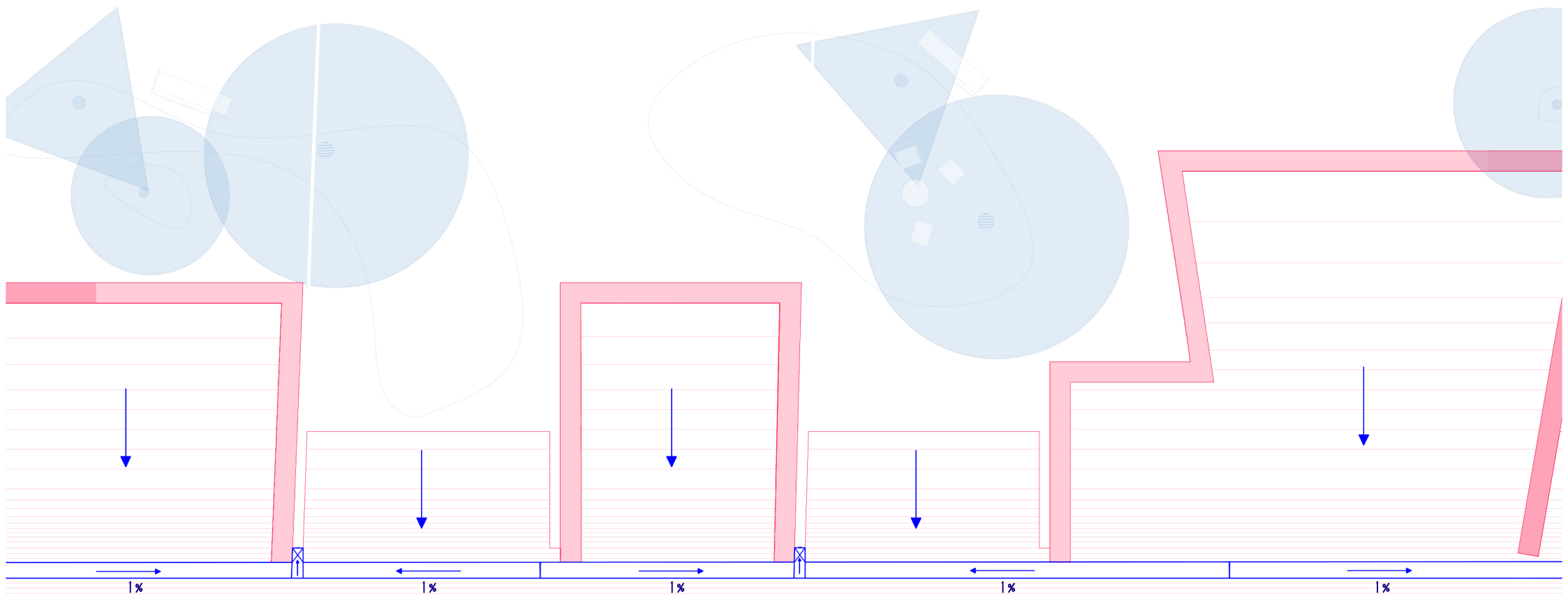


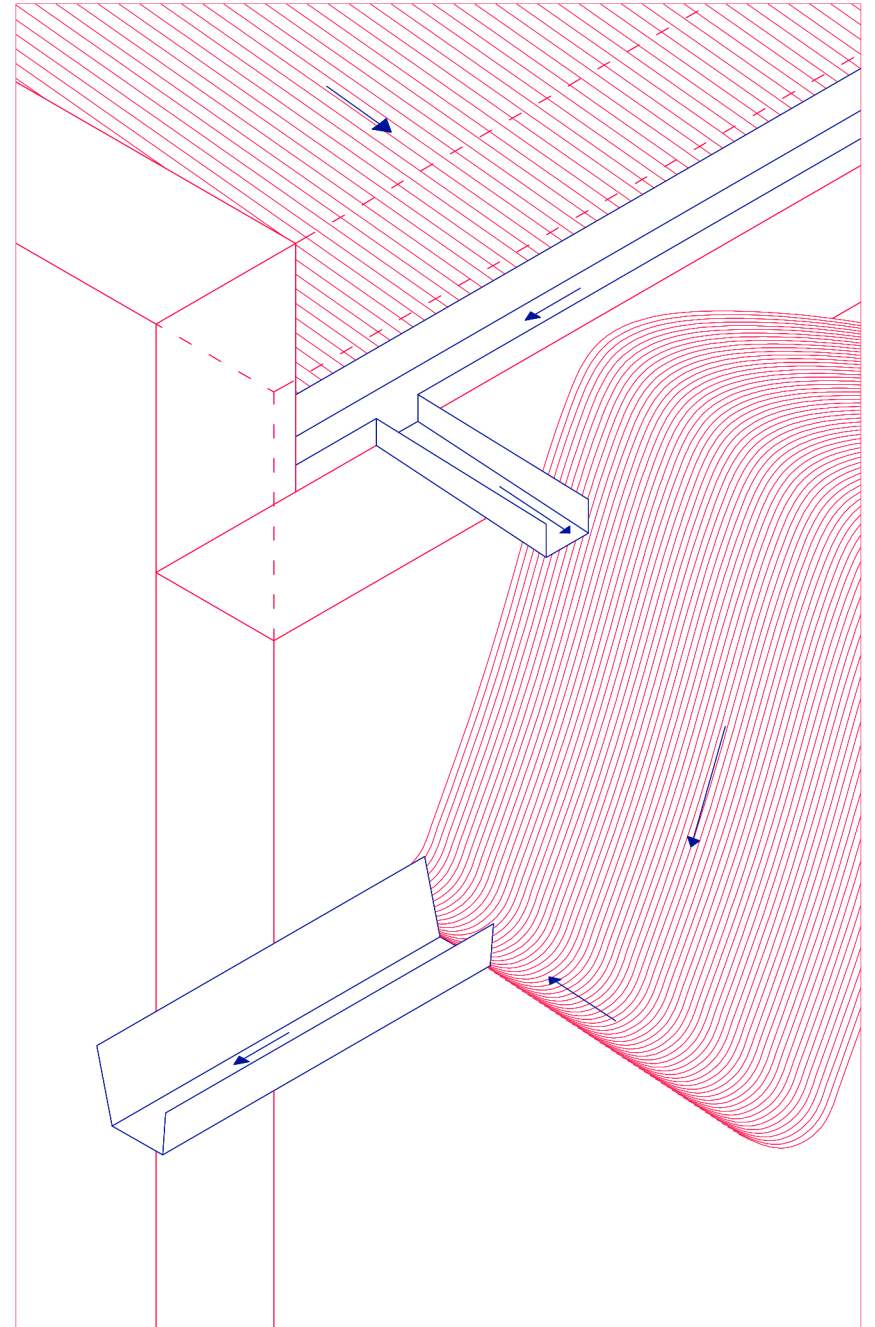
03

ANEXO 1
MEMORIA GRÁFICA

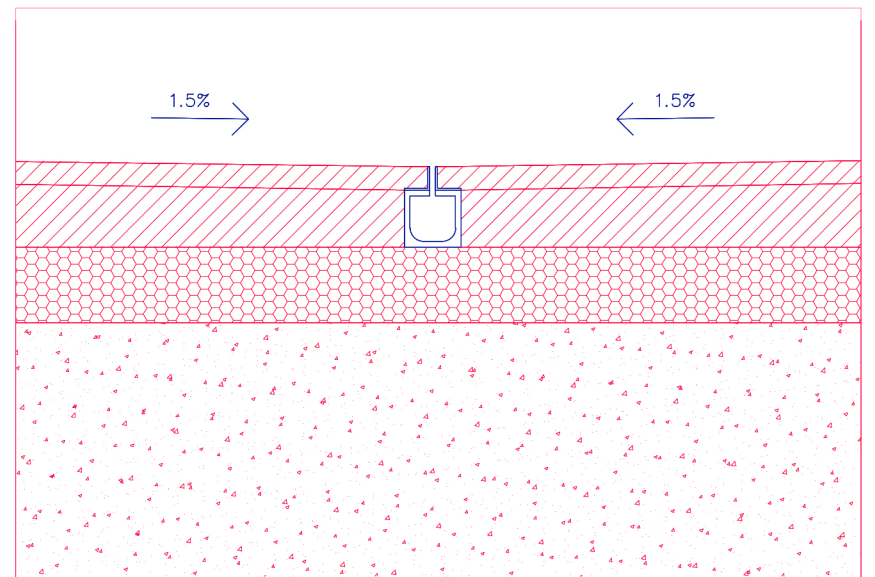




zoom evacuación de aguas pluviales -escala 1:100-

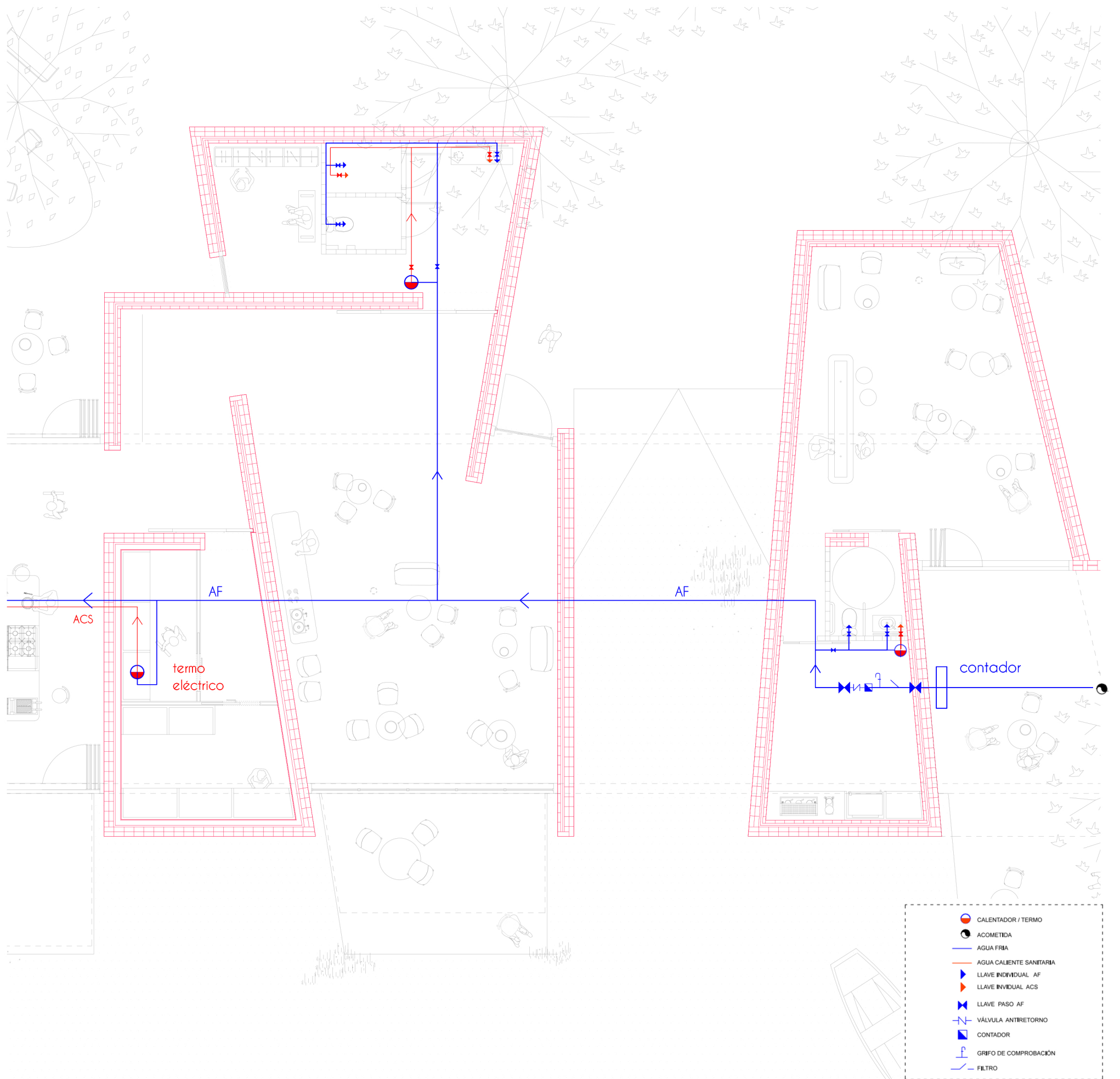


zoom sistema de evacuación de aguas pluviales mediante gárgolas -escala 1.20-



zoom de evacuación de aguas pluviales mediante sistema CAD -escala 1.20-



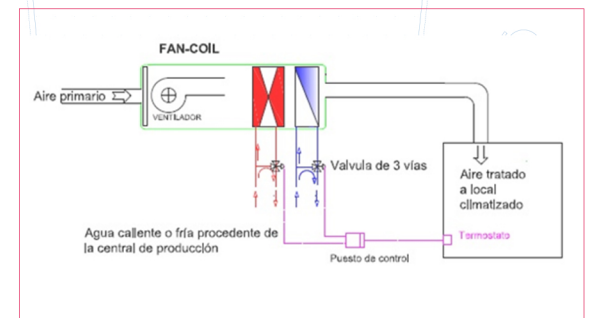
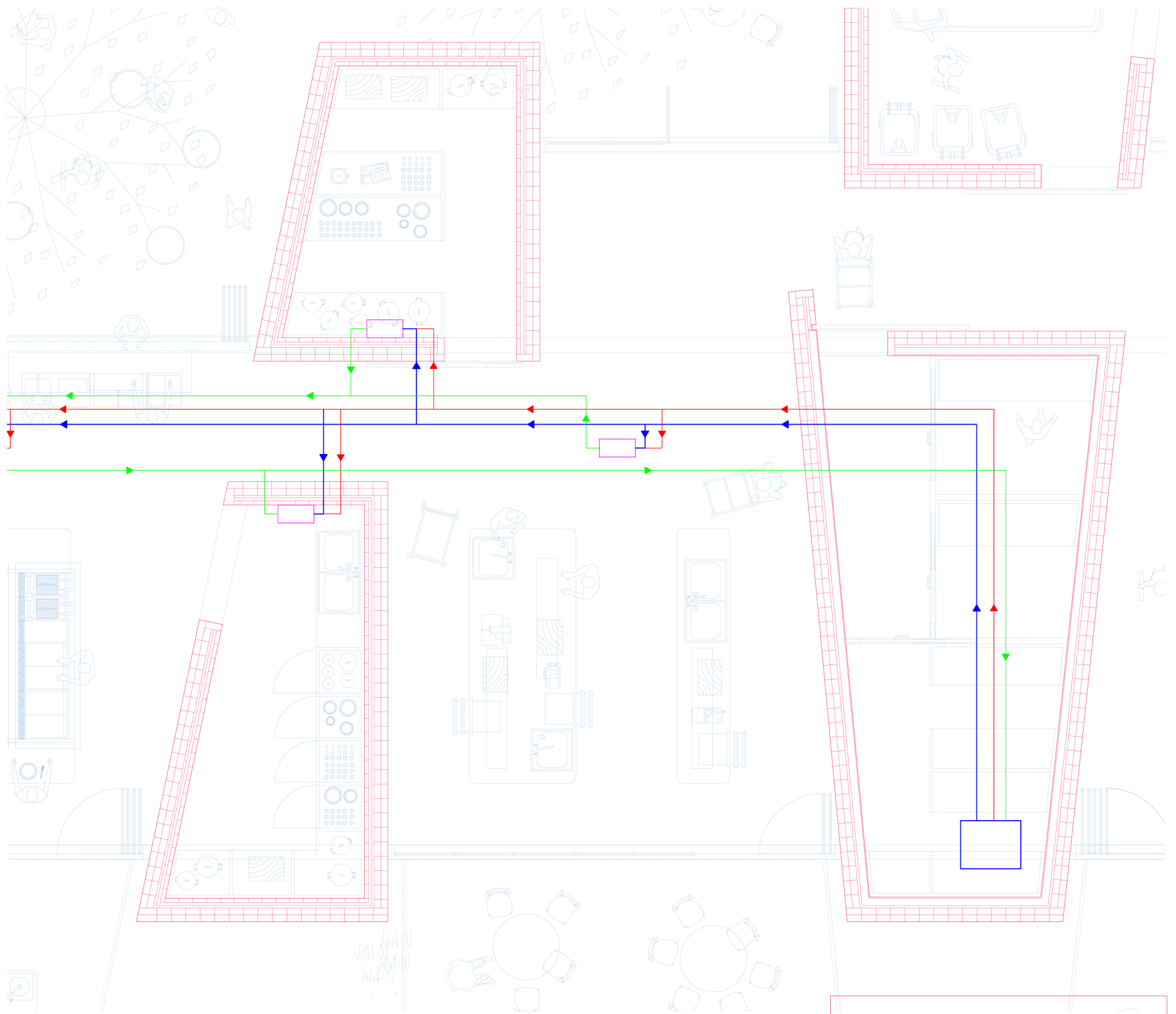


- CALENTADOR / TERMO
- ACOMETIDA
- AGUA FRÍA
- AGUA CALIENTE SANITARIA
- ▶ LLAVE INDIVIDUAL AF
- ▶ LLAVE INDIVIDUAL ACS
- ▶ LLAVE PASO AF
- ▶ VÁLVULA ANTIRETORNO
- ▶ CONTADOR
- ▶ GRIFO DE COMPROBACIÓN
- ▶ FILTRO

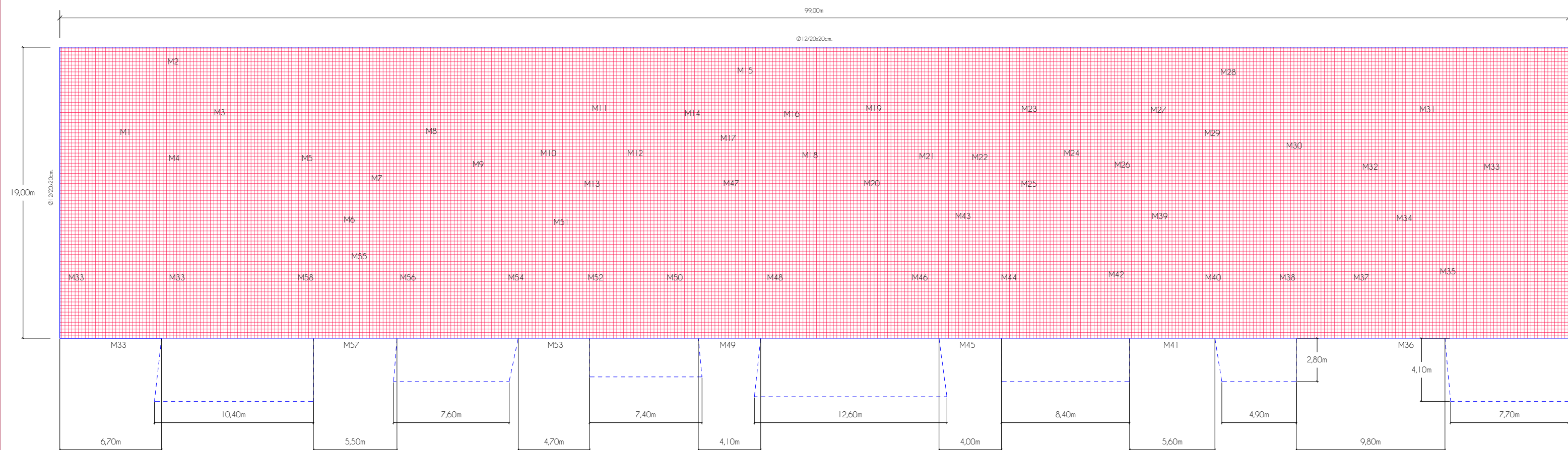
zoom plano de suministro de agua -escala 1.150-



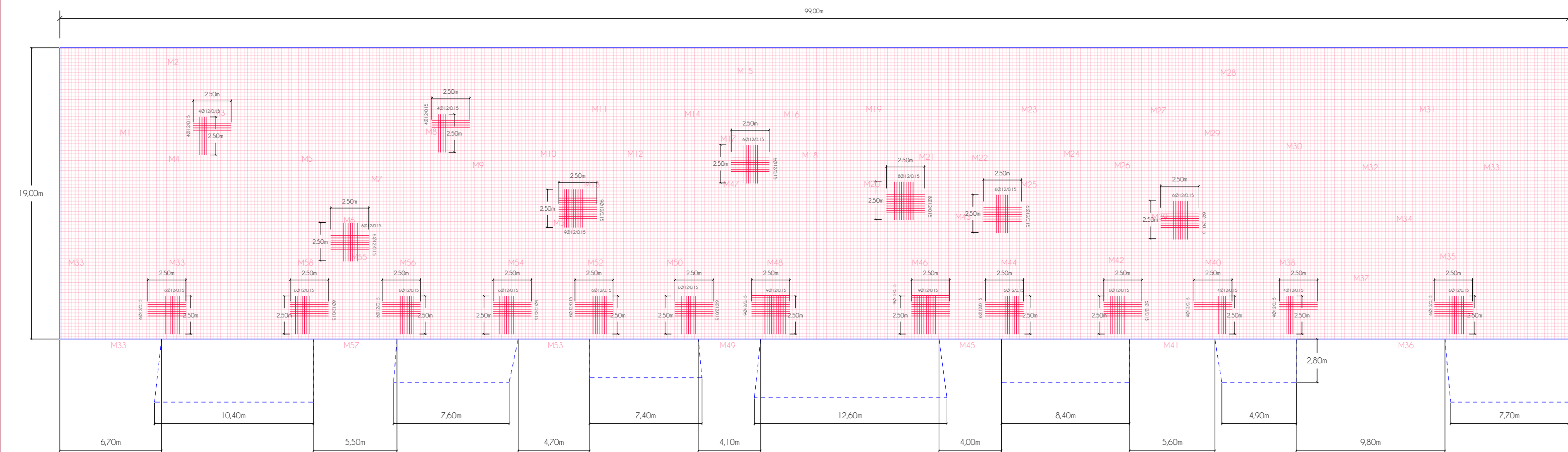
- fan-coil
- circuito de retorno
- circuito de agua caliente
- circuito de agua fría
- refrigeradora



zoom sistema de climatización fan-coil -escala 1.75-

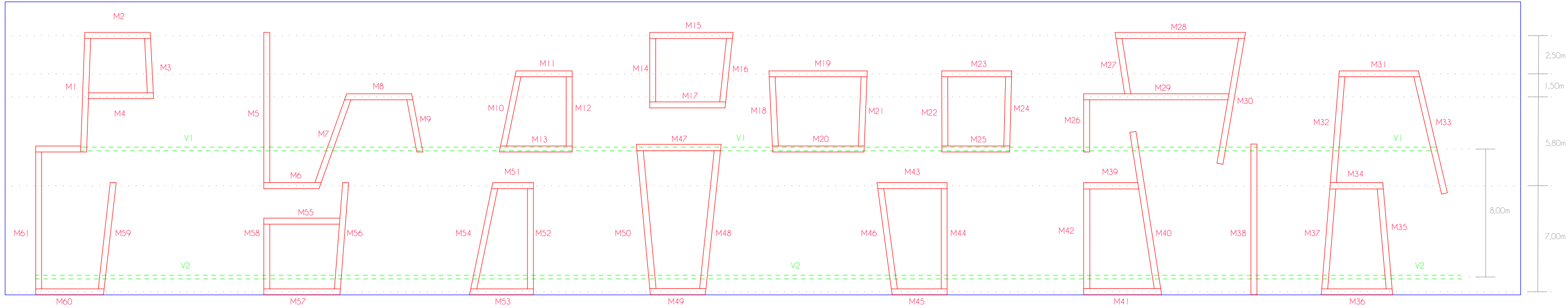


Losa de cimentación armadura momentos negativos (Mx) y armadura de momentos negativos (My)
 Losa de cimentación armadura momentos positivos (Mx) y armadura de momentos positivos (My)
 Material predominante: HA40



Losa de cimentación armadura de refuerzo momentos negativos (Mx) y momentos negativos (My)
 Losa de cimentación armadura de refuerzo momentos positivos (Mx) y momentos positivos (My)
 Material predominante: HA40

CIM



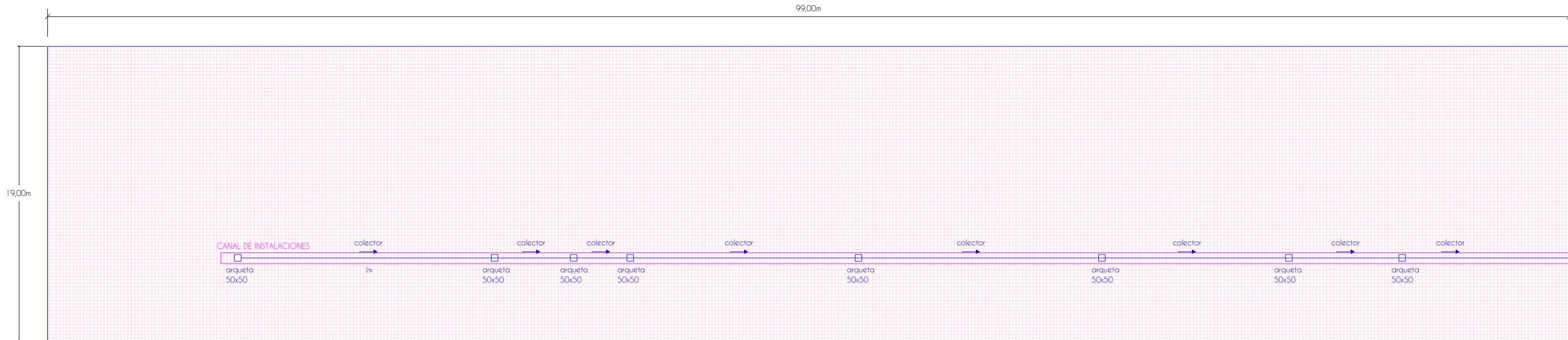
M	esbeltez ($\lambda = hd/td$)	normativa ($\lambda < 27$)
M1	4/0.40 = 10	cumple
M2	4/0.40 = 10	cumple
M3	4/0.40 = 10	cumple
M4	4/0.40 = 10	cumple
M5	4/0.40 = 10	cumple
M6	4/0.40 = 10	cumple
M7	4/0.40 = 10	cumple
M8	4/0.40 = 10	cumple
M9	4/0.40 = 10	cumple
M10	4/0.40 = 10	cumple
M11	4/0.40 = 10	cumple

M	esbeltez ($\lambda = hd/td$)	normativa ($\lambda < 27$)
M12	4/0.40 = 10	cumple
M13	4/0.40 = 10	cumple
M14	4/0.40 = 10	cumple
M15	4/0.40 = 10	cumple
M16	4/0.40 = 10	cumple
M17	4/0.40 = 10	cumple
M19	4/0.40 = 10	cumple
M20	4/0.40 = 10	cumple
M21	4/0.40 = 10	cumple
M22	4/0.40 = 10	cumple
M23	4/0.40 = 10	cumple

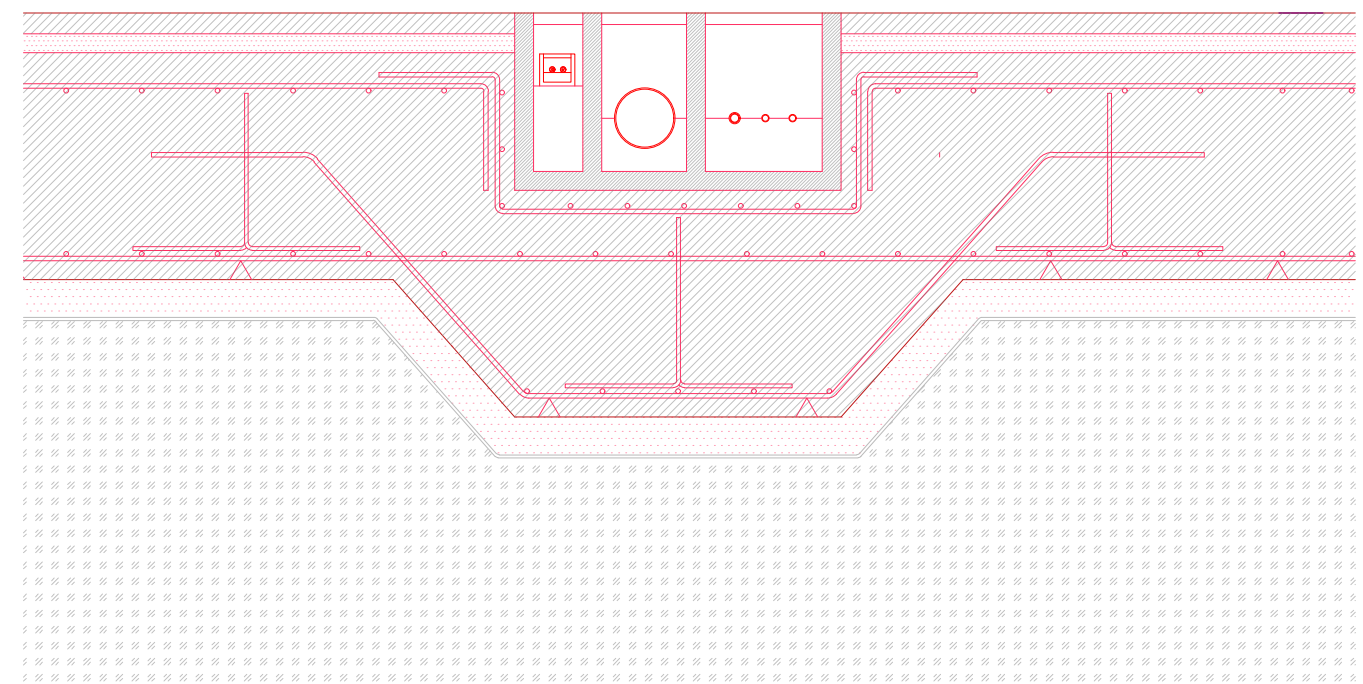
M	esbeltez ($\lambda = hd/td$)	normativa ($\lambda < 27$)
M24	4/0.40 = 10	cumple
M25	4/0.40 = 10	cumple
M26	4/0.40 = 10	cumple
M27	4/0.40 = 10	cumple
M28	4/0.40 = 10	cumple
M29	4/0.40 = 10	cumple
M30	4/0.40 = 10	cumple
M31	4/0.40 = 10	cumple
M32	4/0.40 = 10	cumple
M33	5/0.40 = 12,5	cumple
M35	5/0.40 = 12,5	cumple

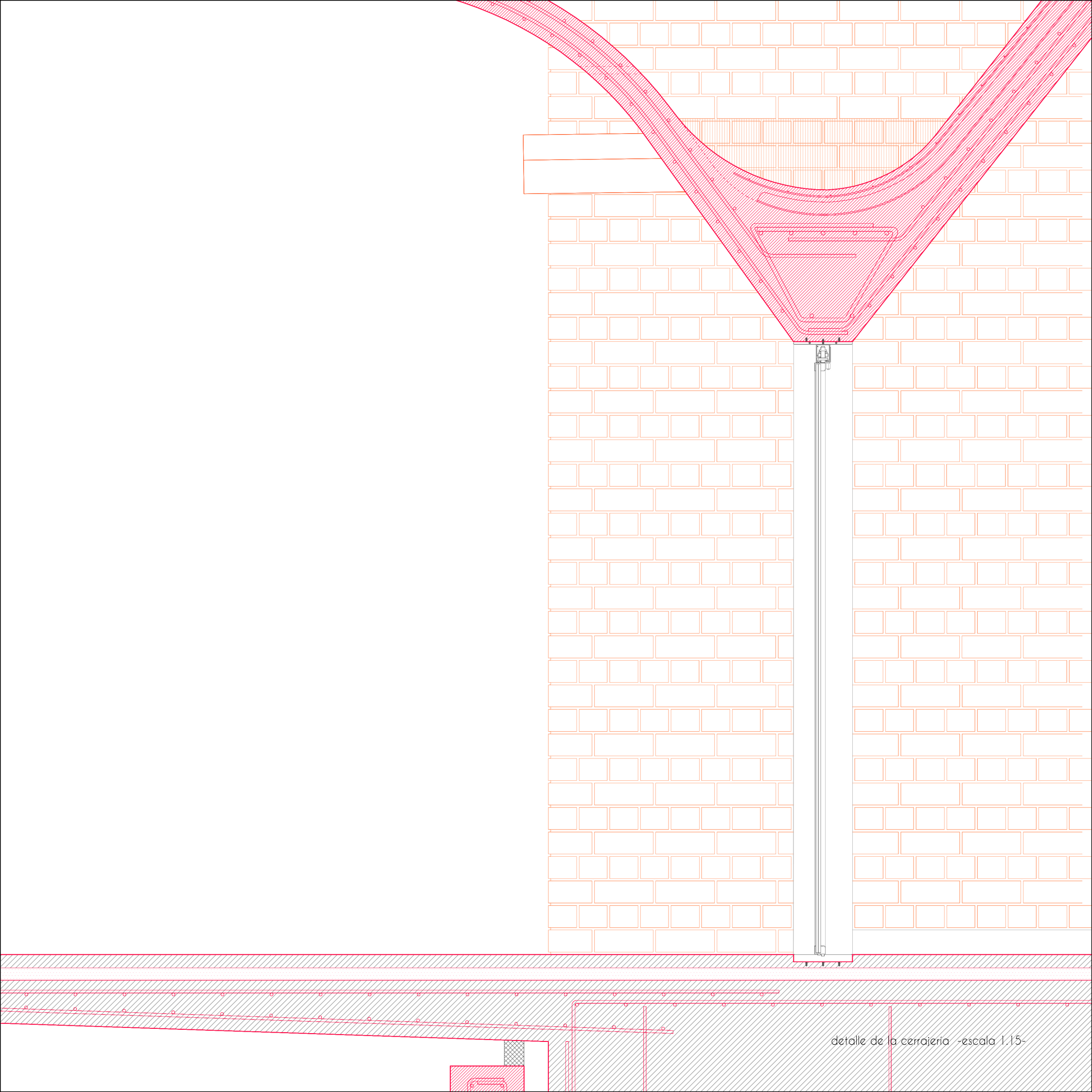
M	esbeltez ($\lambda = hd/td$)	normativa ($\lambda < 27$)
M36	5/0.40 = 12,5	cumple
M37	5/0.40 = 12,5	cumple
M38	5/0.40 = 12,5	cumple
M39	5/0.40 = 12,5	cumple
M40	5/0.40 = 12,5	cumple
M41	5/0.40 = 12,5	cumple
M42	5/0.40 = 12,5	cumple
M43	5/0.40 = 12,5	cumple
M44	5/0.40 = 12,5	cumple
M45	5/0.40 = 12,5	cumple
M46	5/0.40 = 12,5	cumple

M	esbeltez ($\lambda = hd/td$)	normativa ($\lambda < 27$)
M47	5/0.40 = 12,5	cumple
M48	5/0.40 = 12,5	cumple
M50	5/0.40 = 12,5	cumple
M51	5/0.40 = 12,5	cumple
M52	5/0.40 = 12,5	cumple
M53	5/0.40 = 12,5	cumple
M54	5/0.40 = 12,5	cumple
M55	5/0.40 = 12,5	cumple
M56	5/0.40 = 12,5	cumple
M57	5/0.40 = 12,5	cumple
M58	5/0.40 = 12,5	cumple

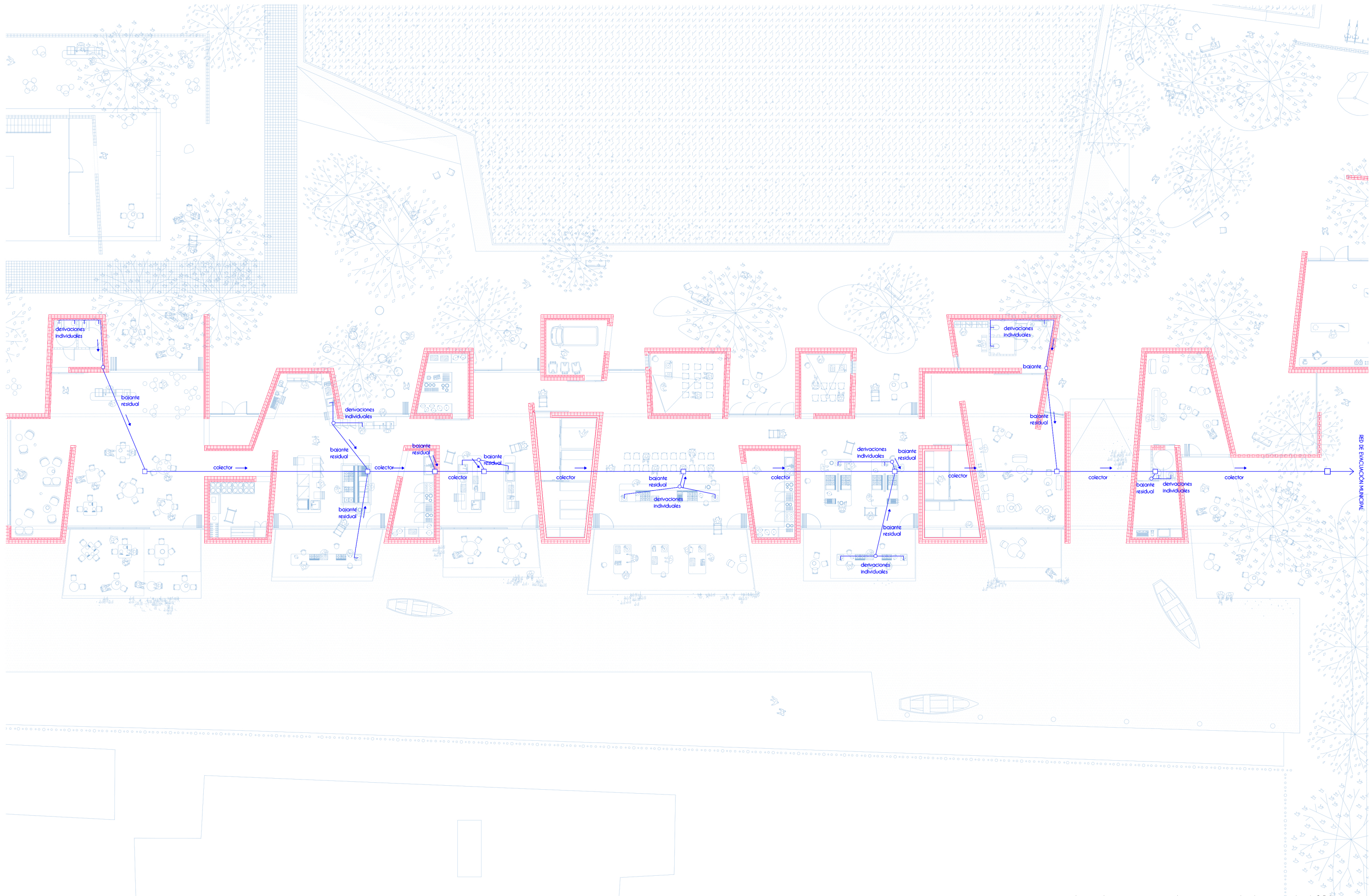


CANAL DE INSTALACIONES





detalle de la cerrajería -escala 1.15-



plano de evacuación de aguas residuales -escala 1.250-



plano de protección contra incendios -escala 1.250-