

Received February 20, 2022, accepted March 31, 2022, date of publication April 7, 2022, date of current version April 15, 2022.

Digital Object Identifier 10.1109/ACCESS.2022.3165579

SWAP: Smart WATER Protocol for the Irrigation of Urban Gardens in Smart Cities

ABDULAZIZ ALDEGHEISHEM¹, NABIL ALRAJEH², LAURA GARCÍA³,
AND JAIME LLORET³, (Senior Member, IEEE)

¹Urban Planning Department, College of Architecture and Planning, King Saud University, Riyadh 11574, Saudi Arabia

²Biomedical Technology Department, College of Applied Medical Sciences, King Saud University, Riyadh 11433, Saudi Arabia

³Instituto de Investigación Para la Gestión Integrada de Zonas Costeras, Universitat Politècnica de València, Gandia, 46730 Valencia, Spain

Corresponding author: Jaime Lloret (jlloret@com.upv.es)

This work was supported by the Researchers Supporting Project, King Saud University, Riyadh, Saudi Arabia, under Grant RSP-2021/295.

ABSTRACT The implementation of Smart City projects has experimented a surge in the recent years with examples such as Smart Santander or Barcelona Smart City. Among the different domains that comprise the Smart City, water management has a great importance, more so in areas with water scarcity. Furthermore, water from different sources such as treated sewage water or collected rainwater can be utilized to address water needs where the use of potable water is not necessary. Therefore, the implementation of smart systems for the irrigation of urban gardens and other urban vegetated areas is of great importance to manage both water needs and the available resources. In this paper, a communication protocol for smart irrigation systems designed within the context of the Smart City is presented. The protocol enables the communication among devices with both LoRa and WiFi wireless technologies. Tests were performed with low-cost devices in an urban area. The results demonstrate the good performance of the proposal, obtaining the minimum packet loss by adding a 500 ms delay at the CH node when transmitting messages from WiFi to LoRa and vice versa.

INDEX TERMS Irrigation, LoRa, protocol, smart city, urban garden.

I. INTRODUCTION

The evolution of cities to introduce Smart City solutions to monitor and automate different aspects such as traffic, energy consumption, urban gardens or sewage system has increased in recent years. The domains of the Smart City can be divided into five categories being eco-smart cities, traffic control, schooling, e-health, and e-energy [1]. However, there may be other types of classifications. Water management has also been the object of study regarding Smart Cities with concepts such as water-sensitive urban design or using smart meters to monitor non-revenue water [2]. Smart water solutions can be utilized for decentralized water management to reduce energy consumption compared to centralized systems. Furthermore, the use of water management within Smart City policies can also be utilized to provide cooling options in heatwave conditions as it has been studied in the case of Australia [3]. By using the water collected by rainwater tanks, storm water, and recycled sewage wastewater, a reduction of 1°C - 2°C

The associate editor coordinating the review of this manuscript and approving it for publication was P. Venkata Krishna^{1b}.

of the air temperatures can be obtained through the irrigation of urban green-space habitats. Water management in Smart Cities can also be applied to urban agriculture [4]. These smart practices are based on the use of electronic devices and equipment that allow the automation of certain tasks. This includes water sprayers or light controllers. The potentialities of these types of systems are their portability, small size, and low labor requirements. On the other hand, the challenges are related to its difficulty for large-scale crops.

Several projects of smart cities have implemented smart solutions for the different domains. Norway has deployed Smart City solutions such as the ECO-city project in the city of Trondheim in 2005, which is focused on energy consumption [2]. Furthermore, a decentralized smart water treatment was performed in the neighborhood of Klosterenga, Oslo, and other water management solutions were deployed in Bergen. Spain has also performed Smart City initiatives such as Smart Santander, Barcelona Smart City, and Guadalajara Smart City [1]. Smart Santander is comprised of devices such as sensors, actuators, RFID tags, and cameras, counting more than 10000 devices. This project considers the irrigation

of parks and gardens, traffic monitoring, participatory sensing, augmented reality, parking systems, and environmental mobile monitoring. Barcelona includes a smart lighting system, smart water management, smart mobility, and WiFi access points for the citizens. The data is open access and is published through a mobile app. Lastly, Guadalajara Smart City includes the SOU (Sistema Operativo Urbano), which is a data center that collects and analyzes the data from the devices, and services for public spaces. Moreover, the European Union has presented the CERP-IoT initiative to reach a common vision of IoT which includes several Smart City projects.

The city environment provides access to the existing infrastructure so that the devices can be connected to the power grid and the ISP (Internet Service Provider). However, deploying cabled communications for all devices is costly and difficult to implement. Thus, many smart solutions utilize wireless communications. The selection of the best wireless technology should be performed according to the application and the available resources [5]. The distance, traffic type, and energy consumption should be considered to select among the varied options available. Furthermore, the positioning of the sensing devices considering the existing obstacles should be evaluated as well [6]. This way, Bluetooth can be used for short-range communication, WiFi is a good option for medium-range communications with high traffic demands and it is accessible for the majority of the public, and LoRa can be employed for long-distance communications as it would be required for large parks such as Central Park in New York City. As Smart Cities include different functionalities, the utilization of more than one type of wireless technology should be considered.

Smart Cities are comprised of different types of devices that communicate with each other to perform different activities. In order to enable the communication among the devices, a protocol is required. However, it is difficult to find a solution suitable for networks comprised of devices that use different communication technologies such as WiFi and LoRa. In this paper, the SWAP (Smart Water Protocol) protocol is presented. It enables interoperability between LoRa and WiFi devices. Furthermore, the messages are designed for the specificities of smart irrigation systems for urban gardens in Smart Cities. Lastly, the protocol was developed and tested with low-cost devices to determine its performance.

The rest of the paper is organized as follows. Section 2 presents the related work. The methodology, including the description of the architecture and the protocol, is presented in Section 3. The results are depicted in Section 4. The comparison of our solution with the previous works is provided in Section 5. Lastly, Section 6 presents the conclusion and future work.

II. RELATED WORK

With the introduction of the concept of Smart City and the growing interest in deploying this type of smart systems, the development of solutions that cater to the need

of irrigating vegetated areas within urban environments as part of the functionalities of Smart Cities has been increasing. Amit Kumer Podder *et al* presented in [7] a smart IoT system for urban agriculture that considers temperature, humidity, and soil moisture. The controller incorporated an ESP8266 chip, and the utilized sensors were the DHT 11 for temperature and humidity and a soil moisture sensor comprised of two probes. A relay module and a water pump were included as well. Tests were done to determine the error percentage with results below 1.5% for temperature, and below 3% for humidity and soil moisture. Hamza Benyazza *et al.* presented in [8] an irrigation strategy based on zones and implemented through IoT. The focus of this strategy is the reduction of water usage and the optimization of plant growth. The sensors deployed on the greenhouse monitor different parameters of the environment such as soil humidity and temperature, and fuzzy logic is applied to obtain the best decision. The results show a reduction in water and energy consumption. A smart design for the irrigation of urban trees in the context of smart cities was provided by Henner Gimpel *et al.* [9]. The prototypes were deployed in Frankfurt, Germany, including 18 sensors that monitor soil moisture, temperature, and water potential for the evaluation of 8 trees. Furthermore, the sensors gather data at different depths. The authors estimate a reduction of 1 million liters for the total of 5000 young trees in Frankfurt. José Marín *et al.* presented in [10] a system for urban lawn monitoring. It is comprised of an Arduino board with a camera mounted on a drone. The drone flies over the grass to obtain pictures that are analyzed utilizing a rule-based algorithm that indicates the quality of the grass in terms of coverage. The tests were performed with 12 pictures, showing a 100% accuracy. Furthermore, tests were performed to determine the suitability of monitoring grass fields with drones. The results show that drones should be used for fields larger than 1000 m². An IoT module for resource and energy saving in smart cities was developed in [11] by Vijender Kumar Solanki *et al.* The module is comprised of an Arduino board, sensors such as water level indicators, and soil moisture detectors, and other components such as relays. These modules are deployed on different appliances such as garden sprinklers or garden lamps, among other devices, to reduce the energy consumption. Luis Cano *et al.* proposed in [12] a smart irrigation system for city parks. The system considers temperature, humidity, land area, and the weather forecast. Humidity and temperature maps of the parks are generated, and the data is analyzed with a fuzzy inference system (FIS) to obtain the irrigation needs of the parks. The application of this proposal is expected to generate significant savings. Lastly, André Glória *et al.* presented in [13] a smart water management system that collects data in real-time and obtains the irrigation requirements of the garden. The nodes communicate utilizing the MQTT protocol. The results showed a reduction of 34% in water usage if data from humidity, temperature, and soil moisture is obtained. In the case of only providing temperature data, a reduction in water usage of 26% can be obtained.

On the other hand, it is also important to consider the network required to deploy smart irrigation systems in Smart Cities and the security requirements specific to this type of system. Lorena Parra *et al.* proposed in [14] a network topology formation algorithm for Wireless Sensor Networks in smart gardens. The algorithm considers the resources and capabilities of the devices, generates piconets, and communicates them establishing slave-slave bridges. The simulation experiments were performed considering varied scenarios. The provided results include the formation time for the different scenarios and the created links. An edge computing framework for smart cities to reduce the latency that may be introduced in scenarios where cloud computing is utilized was designed by SK Algami Hossain *et al.* in [15]. The information gathered about the environment was utilized to generate a situation that is later analyzed. A prototype implementation was developed utilizing Laravel Framework 5.6 and DK version 8. Existing databases were utilized to perform the tests of the prototype. The results showed that the latency was reduced, and the proposed framework provided situational awareness. Finally, Seyyed Keyvan Mousavi *et al.* presented in [16] a hybrid cryptographic algorithm to provide integrity and confidentiality to smart irrigation systems. The algorithm is based on Rivest cipher (RC4), the Secure Hash Algorithm (SHA-256), and the Elliptic-Curve Cryptography (ECC). This way, the ECC algorithm encrypts the RC4 key. After that, the result is transformed to SHA-256. The results showed that the proposal is secure from Man-in-the-middle (MiM) attacks, provides robust confidentiality, and it has better performance than other existing proposals.

This paper expands on the communications between the different elements that comprise a smart irrigation system for a Smart City and presents a heterogeneous communication protocol to connect devices that utilize different wireless technologies.

III. METHODOLOGY

In this section, the architecture of the proposed system for irrigation in Smart Cities, the proposed protocol, and the states of the nodes are presented.

A. ARCHITECTURE

In this subsection, we propose an architecture for a smart city irrigation system intended for urban gardens.

The need for water resources optimization has been addressed by many smart irrigation systems intended for agriculture. However, there are not as many proposals focused on urban gardens and the deployment of smart devices for irrigation within the context of a smart city. Firstly, it is important to notice some relevant differences between the environment of an agricultural field and the environment of an urban garden.

Firstly, the most evident difference is the deployed infrastructure that provides access to energy and the Internet. While agricultural fields are located in remote areas often with no

access to the electric grid nor to any devices with internet access, smart cities have many options available to provide smart devices with energy and to enable the communication among these devices.

Secondly, the crops in agricultural fields need to meet the standards for human consumption or the specific requirements of their industry, thus, these plants often require more care. On the other hand, the trees, plants, and grass of urban gardens are usually more robust and could be irrigated with other sources of water such as filtered wastewater as the standards for these types of plants are not as strict as those for agriculture.

Lastly, it is important to consider possible interferences when deploying devices with wireless communications. Smart irrigation systems in agricultural fields will often be the only network deployed in the area. However, depending on the location, amplitude, and the surrounding area of the urban gardens, other networks from businesses, and other smart city functionalities may interfere with the frequencies selected for data transmission in the smart city irrigation management system.

Considering all these aspects, the architecture in Fig. 1 is presented. The Soil Monitoring Nodes are comprised of an embedded system and sensors for temperature, humidity, and pH monitoring. These nodes transmit the gathered data through WiFi to the Cluster Head (CH) as this wireless technology has a transmission range that allows distances up to 100 meters approximately. The cluster head is able to transmit with both WiFi and LoRa. LoRa is employed to forward the data to the devices located at distances further than 100 meters. This node receives the data from the soil monitoring sensors and sends it to the Environment monitoring Aggregator node. These nodes include air temperature, air humidity, luminosity, and precipitation sensors to determine the environmental conditions of the garden. This is important due to the differences that can be found in the streets with buildings, vehicles, and asphalt, and the parks with green areas that may be cooler and more humid. After that, the data is forwarded to the Gateway. Different LoRa gateways may receive the data depending on the location of the aggregator node and the gateway. Furthermore, the Aggregator node also sends the actions to the Actuator nodes that control the irrigation process and receives the Acknowledgements from the Actuators. Finally, the data is transmitted through Ethernet to the Data Center where it is stored and analyzed.

B. PROTOCOL DESCRIPTION

In this section, the message format and the message exchange of the protocol is presented.

The proposed protocol SWAP enables the communication between the devices of the irrigation management system for smart cities. This protocol functions over LoRa and over UDP for the WiFi elements of the network. The message format of the protocol is presented in Fig. 2. The header is comprised of four fields. The NODE_ID field is one byte long and it is a random number assigned to the device. Each device has

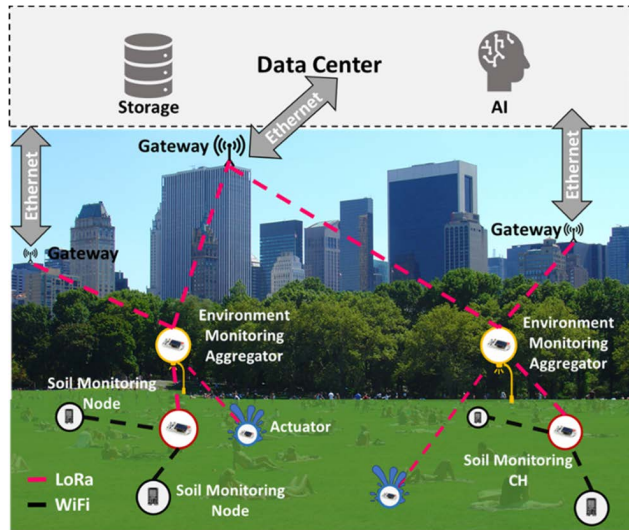


FIGURE 1. Architecture of the smart irrigation system for smart cities.

its own ID number that is not shared with any other device. The next field is the NODE_TYPE. It is a code assigned for each type of node. Therefore, nodes of the same type will have the same number on this field. The MESSAGE field indicates the type of message that is being forwarded. Lastly, the PRIORITY field is the last field in the header. It is one bit long and indicates if the message is considered as a priority. The header is followed by the payload, which is comprised of the data gathered by each of the sensors in a node.

The different node types include the Data center, the gateway, the aggregator, the CH, the soil monitoring nodes and the Users, as it can be seen in Table 1. On the other hand, Table 2 shows the message types, which are the REGISTER message, the DATA message, the ACTION message, the ERROR message, the DOWN message, and the BATTERY message. As it can be seen, all messages except the DATA message have priority. The REGISTER message is forwarded when a node is first connected to the network to ask for its ID. Therefore, this message has priority to enable the device to begin working. The ACTION message has priority so that new states for the actuators reach their destination as soon as possible. The rest of the messages are alerts, so they have priority as well to notify the data center and the user. Although it is possible for several priority messages to be forwarded at the same type, considering the low data acquisition frequency required by smart irrigation systems and the slow changes in environments such as gardens, all simultaneous priority messages would be forwarded in a FIFO (First In First Out) manner in ms, leaving the transmission of the DATA messages for later.

The message Exchange of the protocol is presented in Figure 3. Firstly, all the nodes are registered in the Data Center. In order to do so, the nodes send a message of the REGISTER type starting from the closest to the Data center up to the furthest ones. The Data Center responds with a REGISTER message including in the payload the ID assigned

to that node. After that, the nodes begin obtaining data from the sensors and sending it to the data center. If the Data Center detects that a packet is lost, it can send a data petition utilizing the same DATA message. The DATA message is not acknowledged. When the Data Center decides for the actuators to perform any action, it sends an ACTION message indicating in the payload the new state of the node.

TABLE 1. Node types and their values.

Node Type	Value
Data Center	0
Gateway	1
Aggregator	2
CH	3
Soil monitoring node	4
Actuator	5
User_citizen	6
User_government	7
User_administrator	8

This message is acknowledged to let the Data Center know that the action has been performed.

The devices may detect some errors from their own elements. If any errors are detected, the node sends the ERROR message to the Data Center indicating the motive of the error in the payload. This message is acknowledged as well. The nodes may also detect failed connections to other nodes. In that case, a DOWN message is forwarded indicating the ID of the node with the failed connection. The Data Center then acknowledges the message. If no acknowledgement was received, the message would be forwarded as well. Lastly, if one of the electronic devices detect low remaining energy, it forwards a BATTERY message to the Data Center to let it know that it requires a battery replacement. This message is acknowledged as well.

C. STATES OF THE NODES

In this subsection, the states of the nodes are presented.

Depending on the different nodes and their specific functionalities, each of the nodes go through a different set of states:

- *Register state:* When the node is in the first state, a REGISTER message is forwarded to the data center to receive their Node ID.

- *Verification state:* This state is reached after the register state. The correct operation of the node, its elements and the communications are verified. In case of the detection of an error, a report is forwarded with an ERROR message to the Data Center. If the node is working correctly, no messages are forwarded. The state can be reached again by request of the users.

- *Acquisition state:* The data is obtained from the sensors and forwarded to the next node in the architecture.

- *Data state:* A DATA message is forwarded to the Data Center with the available information.

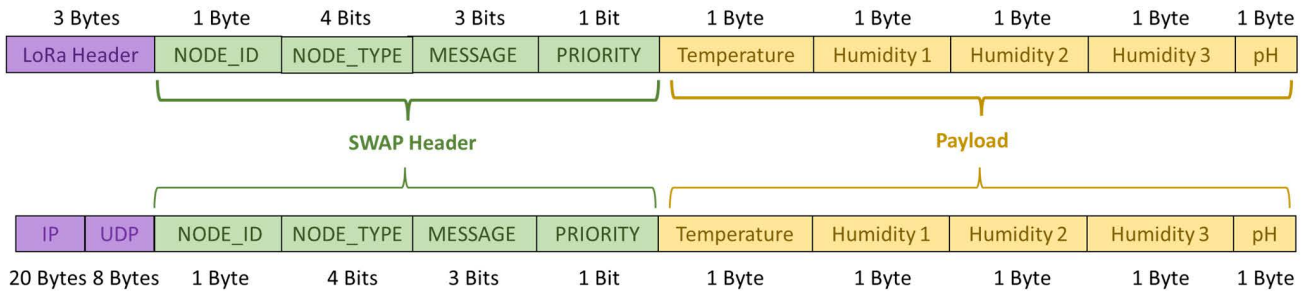
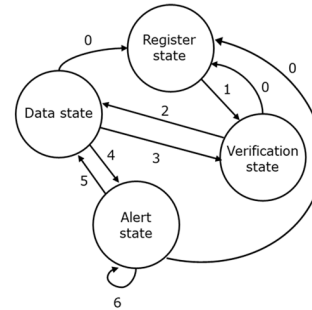


FIGURE 2. Message format.

TABLE 2. Message types and priority specifications.

Message	Value	Priority
REGISTER	0	Yes
DATA	1	Optional
ACTION	2	Yes
ERROR	3	Yes
DOWN	4	Yes
BATTERY	5	Yes



- **Event 0:** Event reached if failure or reboot.
- **Event 1:** Event reached when the register process is completed.
- **Event 2:** Event reached when the correct operation is verified.
- **Event 3:** Event reached when a verification request is received.
- **Event 4:** Event reached when alert is detected.
- **Event 5:** Event reached when alert is forwarded.
- **Event 6:** Event reached when the alert is not processed.

FIGURE 4. States of the gateway node.

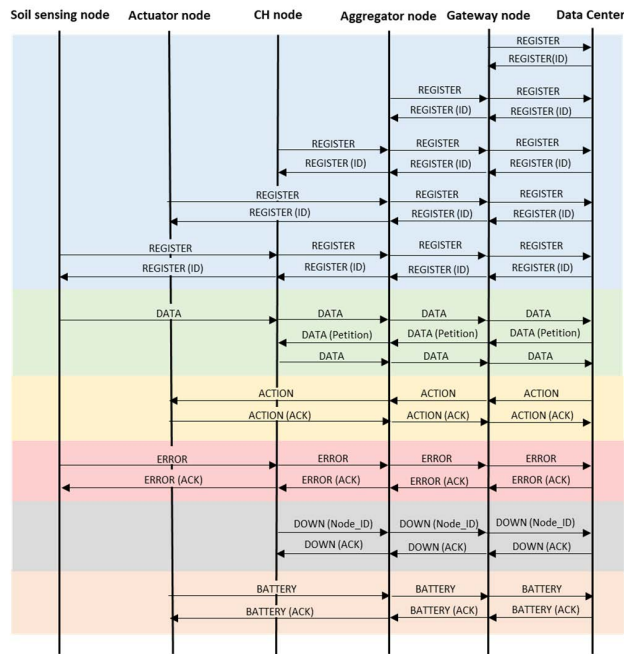


FIGURE 3. Message exchange.

- **Alert state:** This state is reached when an error or an alert of the types DOWN or BATTERY are detected.

- **Action state:** This state is reached when an ACTION message is received.

The four states of the Gateway are presented in Fig. 4:

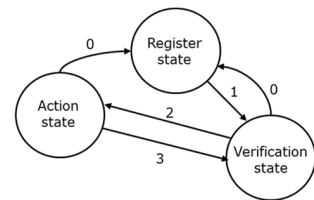
The states of the actuator are presented in Fig. 5.

The states of the monitoring nodes are presented in Fig. 6.

The states of the CH nodes and the Aggregator nodes are presented in Fig. 7.

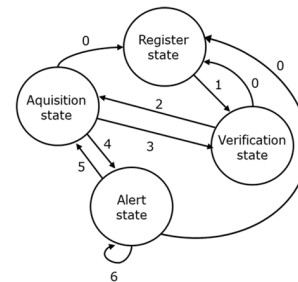
IV. RESULTS

In this section, the results of the performed tests are presented.



- **Event 0:** Event reached if failure or reboot.
- **Event 1:** Event reached when the register process is completed.
- **Event 2:** Event reached when the correct operation is verified.
- **Event 3:** Event reached when a verification request is received.

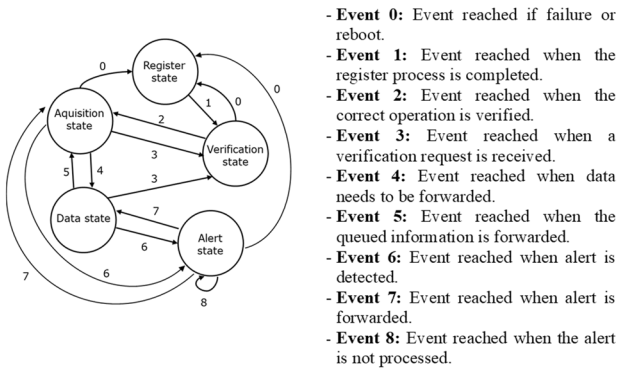
FIGURE 5. States of the Actuator nodes.



- **Event 0:** Event reached if failure or reboot.
- **Event 1:** Event reached when the register process is completed.
- **Event 2:** Event reached when the correct operation is verified.
- **Event 3:** Event reached when a verification request is received.
- **Event 4:** Event reached when alert is detected.
- **Event 5:** Event reached when alert is forwarded.
- **Event 6:** Event reached when the alert is not processed.

FIGURE 6. States of the monitoring nodes.

The tests were performed in a vegetated area close to edifications as it is shown in Fig. 8. The gateway was placed at the top of a building, and the rest of the devices were at street level. All the tests were performed with a total of five devices. One Gateway, one Aggregator, one cluster head, and two soil monitoring nodes. The Wemos Mini D1 devices were utilized for the soil monitoring nodes. They include the ESP8266 WiFi chip and incorporates an antenna. For the rest of the nodes, the Heltec LoRa WiFi 32 v2 was utilized. It allows transmitting with both WiFi and LoRa. For the experiments, the two soil monitoring nodes send messages



- **Event 0:** Event reached if failure or reboot.
- **Event 1:** Event reached when the register process is completed.
- **Event 2:** Event reached when the correct operation is verified.
- **Event 3:** Event reached when a verification request is received.
- **Event 4:** Event reached when data needs to be forwarded.
- **Event 5:** Event reached when the queued information is forwarded.
- **Event 6:** Event reached when alert is detected.
- **Event 7:** Event reached when alert is forwarded.
- **Event 8:** Event reached when the alert is not processed.

FIGURE 7. States of the CH nodes and the Aggregator nodes.

to the CH each minute. The CH then sends the data to the Aggregator, and lastly, the aggregator sends the data to the gateway. The duration of the experiment was 10 minutes. Furthermore, the tests were performed for both 433 MHz and 868 MHz frequency bands, and the delay at the CH node was varied from 0 ms to 500 ms to avoid collisions between LoRa packets.



FIGURE 8. Location of the tests.

A. 433 MHZ FREQUENCY BAND WITH DELAY OF 0 MS

In this subsection, the results for the case of transmitting with the 433 MHz frequency band and a delay of 0 ms are presented. Fig. 9 shows the results of the throughput for each of the nodes. Fig. 9 a) and b) show the results for the soil sensing nodes. As it can be seen, the maximum throughput peaks are 512 bps for and 760 bps, with an average of 5.64 bps and 6.46 bps. Fig. 9 c) shows the throughput and loss packets of the CH node. The maximum throughput peak is 256 bps, and the average is 3.17 bps. A total of 7 packets were lost in this test. The results of the Aggregator node are presented in Fig. 9 d) with a peak of 160 bps and an average of 2.62 bps. Lastly, the results for the gateway are presented in Fig. 9 e) with a peak of 56 bps and an average of 0.77 bps.

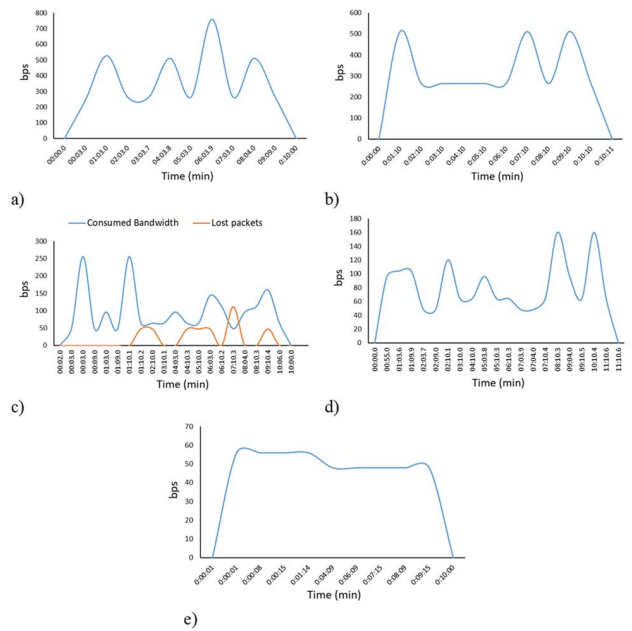


FIGURE 9. Bandwidth consumption for a) WiFi 1 node, b) WiFi 2 node, c) CH node, d) Aggregator node, e) Gateway node transmitting in the 433 MHz frequency band with delay of 0 ms.

B. 433 MHZ FREQUENCY BAND WITH DELAY OF 250 MS

Fig. 10 presents the results for the case of the 433 MHz frequency band with a 250 ms delay. Regarding the soil monitoring nodes (See Fig. 10 a) and b), the peaks in the throughput reached 760 bps and 512 bps. The average values were 7.70 bps and 6.88 bps. Fig. 10 c) presents the throughput of the CH node and the lost packets. The maximum peak is 368 bps, and the average value is 5.06 bps. Furthermore, 10 packets were lost. The results for the Aggregator node are presented in Fig. 10 d) with a peak of 216 bps and an average of 3.50 bps. Lastly, the maximum throughput for the gateway is 152 bps and the average is 1.24 bps (See Fig. 10 e).

C. 433 MHZ FREQUENCY BAND WITH DELAY OF 500 MS

Fig. 11 presents the results for the case of the 433 MHz frequency band and a delay of 500 ms. The results for the soil sensing nodes show peaks of 512 bps and 760 bps with averages of 6.05 bps and 7.70 bps (See Fig. 11 a) and b). The CH node has a maximum throughput of 456 bps and an average of 4.56 bps (See Fig. 11 c). The number of lost packets in this test was 2. For the Aggregator node, the maximum throughput was 144 bps, and the average was 1.33 bps (See Fig. 11 d). Lastly, the gateway presented a throughput maximum peak of 304 bps and an average of 3.94 bps (See Fig. 11 e).

D. 868 MHZ FREQUENCY BAND WITH DELAY OF 0 MS

The results for the case of 868 MHz and 0 ms of delay are presented in Fig. 12. The soil sensing nodes have peak throughputs of 512 bps and 760 bps and averages of 5.64 bps and 7.70 bps (See Fig. 12 a) and b). For the CH node, the maximum peak is 456 bps and an average of 4.66 bps

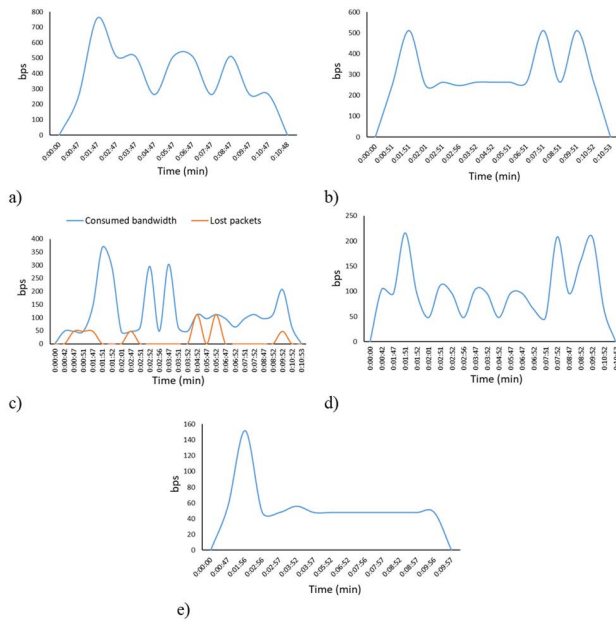


FIGURE 10. Bandwidth consumption for a) WiFi 1 node, b) WiFi 2 node, c) CH node, d) Aggregator node, e) Gateway node transmitting in the 433 MHz frequency band with delay of 250 ms.

(See Fig. 12 c). The number of lost packets for this case was 7 packets. The aggregator node had a throughput peak of 208 bps and an average of 3.21 bps (See Fig. 12 d). For the gateway, the peak was 56 bps, and the average was 1.02 bps (See Fig. 12 e).

E. 868 MHZ FREQUENCY BAND WITH DELAY OF 250 MS

The results for the case of 868 MHz and a delay of 250 ms are presented in Fig. 13. The maximum throughput for the soil sensing nodes was 512 bps and 760 bps, and the average was 5.64 bps and 7.68 bps (See Fig. 13 a) and b). The maximum throughput for the CH node was 456 bps and the average was 5.16 bps (See Fig. 13 c). The number of lost packets is 2. For the Aggregator node, the peak throughput is 256 bps, and the average throughput is 4.09 bps (See Fig. 13 d). For the gateway, the peak was 144 bps, and the average was 1.50 bps (See Fig. 13 e).

F. 868 MHZ FREQUENCY BAND WITH DELAY OF 500 MS

The results for the case of the 868 MHz frequency band and a delay of 500 ms are presented in Fig. 14. The maximum throughput for the soil sensing nodes are 512 bps and 760 bps, and the average throughput is 5.61 bps and 7.70 bps (See Fig. 14 a) and b). The CH node has a maximum throughput of 408 bps and an average of 4.56 bps (See Fig. 14 c). The total of lost packets was 2 packets. The Aggregator node had a maximum throughput peak of 256 bps and an average throughput of 3.57 bps (See Fig. 14 d). Lastly, the gateway presented a maximum peak of 144 bps and an average throughput of 1.33 bps (See Fig. 14 e).

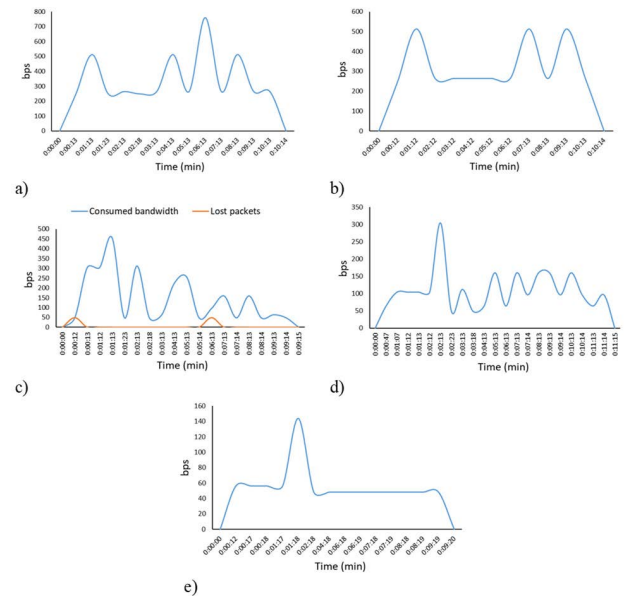


FIGURE 11. Bandwidth consumption for a) WiFi 1 node, b) WiFi 2 node, c) CH node, d) Aggregator node, e) Gateway node transmitting in the 433 MHz frequency band with delay of 500 ms.

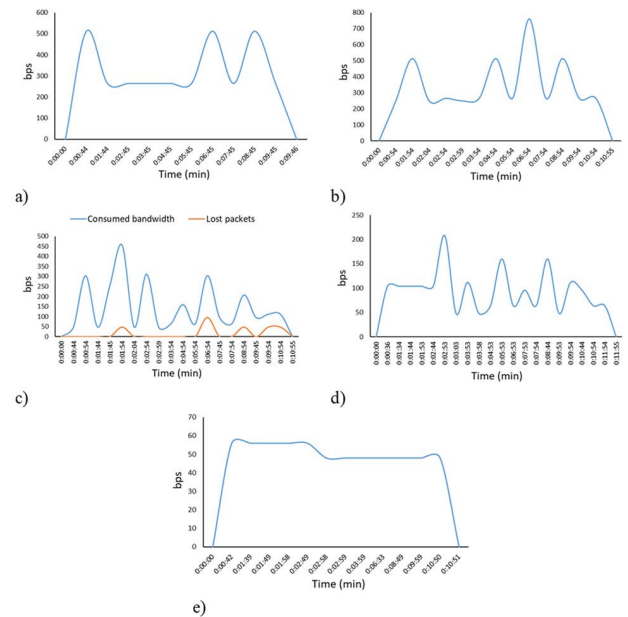


FIGURE 12. Bandwidth consumption for a) WiFi 1 node, b) WiFi 2 node, c) CH node, d) Aggregator node, e) Gateway node transmitting in the 868 MHz frequency band with delay of 0 ms.

V. COMPARISON WITH EXISTING SOLUTIONS

This section provides a comparison of our solution with other existing smart irrigation systems.

Table 3 presents the characteristics of our solution compared to the existing proposals previously commented on Section 2. Regarding the utilized technologies, some proposals such as [8] and [13] employ varied technologies. Particularly, the proposal in [13] also employs LoRa and WiFi, however, WiFi is utilized to communicate with the server,

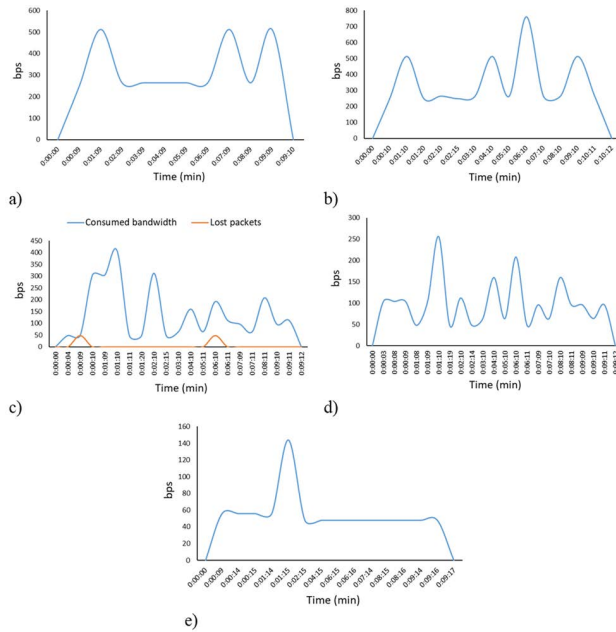


FIGURE 13. Bandwidth consumption for a) WiFi 1 node, b) WiFi 2 node, c) CH node, d) Aggregator node, e) Gateway node transmitting in the 868 MHz frequency band with delay of 500 ms.

TABLE 3. Comparison with other irrigation solutions.

Solution	Communication Technology	Alerts	Scalability	Number of Parameters
Our Proposal	LoRa + WiFi	Yes	High	7
[7]	WiFi	No	High	3
[8]	RF + SPI + WiFi	No	N/A	2
[9]	LoRaWAN	Yes	Yes	2
[11]	GSM	No	N/A	2
[13]	LoRa + WiFi	No	N/A	3

whereas our proposal utilizes both technologies to enable the communication between the different devices of the WSN for long-range and medium-range communications.

The generation of alerts was only present in [9]. Our proposal includes different types of alerts to notify the user of the specific problem that was detected.

Regarding scalability, our proposal presents high scalability allowing the deployment of new devices following the specified architecture format and adding gateways as necessary. The proposal in [7] provides high scalability as well. Furthermore, the work in [9] indicates that it enables software scalability but does not comment on the possibility of increasing the number of deployed devices.

Lastly, our proposal includes the highest number of monitored parameters as it considers both soil and environmental factors. Other proposals only focus on soil monitoring or just consider air temperature or humidity from the different environmental parameters.

Therefore, our solution presents an improvement to the existing proposals for irrigation systems for urban gardens and includes a communication protocol that was implemented

and tested in an urban environment to verify its good performance.

VI. CONCLUSION

Smart Cities have seen a rapid growth in the recent years with projects focused on traffic management, energy management, or water management, among other functionalities. Smart water management solutions can be focused on the reduction of water consumption but also on the treatment of wastewater and the reuse of this treated water or the water collected from infrastructures such as rainwater tanks. In this paper, we have presented a communication protocol intended for smart irrigation systems as part of a Smart City solution. The protocol considers the characteristics of these systems with specific messages for different actions and alerts. Furthermore, this protocol operates with a network comprised of both WiFi and LoRa devices. Tests were performed in an urban environment utilizing low-cost devices. The results showed the good performance of the proposal with minimum packet loss utilizing the configuration that includes a delay of 500 ms in the CH node.

As future work, we will include more types of wireless technologies to the protocol so as to provide more interoperability and to widen the possibility of the addition of new functionalities.

REFERENCES

- [1] C. A. Medina, M. R. Perez, and L. C. Trujillo, "IoT paradigm into the smart city vision: A survey," in *Proc. IEEE Int. Conf. Internet Things (iThings) IEEE Green Comput. Commun. (GreenCom) IEEE Cyber, Phys. Social Comput. (CPSCom) IEEE Smart Data (SmartData)*, Exeter, U.K., Jun. 2017, pp. 695–704.
- [2] M. Umar and W. Uhl, "Integrative review of decentralized and local water management concepts as part of smart cities (LoWaSmart)," Norwegian Inst. Water Res., Oslo, Norway, Tech. Rep. 7058-2016, 2016.
- [3] S. J. Livesley, V. Marchionni, P. K. Cheung, E. Daly, and D. E. Pataki, "Water smart cities increase irrigation to provide cool refuge in a climate crisis," *Earth's Future*, vol. 9, no. 1, Jan. 2021. e2020EF001806
- [4] L. D. Moro, L. D. Gasperina, R. V. Pagnussat, and L. L. Brandli, "Urban gardens: Possibilities of integration with smart practices," in *Water, Energy and Food Nexus in the Context of Strategies for Climate Change Mitigation*. 2020, pp. 47–58, ch. 4.
- [5] L. D. Moro, L. D. Gasperina, R. V. Pagnussat, and L. L. Brandli, "Urban gardens: Possibilities of integration with smart practices," in *Water, Energy and Food Nexus in the Context of Strategies for Climate Change Mitigation*. Cham, Switzerland: Springer, 2020, pp. 47–58.
- [6] P. Fraga-Lamas, M. Celaya-Echarri, L. Azpilicueta, P. Lopez-Iturri, F. Falcone, and T. M. Fernández-Caramés, "Design and empirical validation of a LoRaWAN IoT smart irrigation system," *Multidisciplinary Digit. Publishing Inst. Proc.*, vol. 42, no. 1, p. 62, 2020, doi: 10.3390/ecsa-6-06540.
- [7] A. K. Podder, A. A. Bukhari, S. Islam, S. Mia, M. A. Mohammed, N. M. Kumar, K. Cengiz, and K. H. Abdulkareem, "IoT based smart agrotech system for verification of urban farming parameters," *Microprocessors Microsyst.*, vol. 82, Apr. 2021, Art. no. 104025.
- [8] H. Benyazza, M. Bouhedda, and S. Rebouh, "Zoning irrigation smart system based on fuzzy control technology and IoT for water and energy saving," *J. Cleaner Prod.*, vol. 302, Jun. 2021, Art. no. 127001.
- [9] H. Gimpel, V. Graf-Drasch, F. Hawlitschek, and K. Neumeier, "Designing smart and sustainable irrigation: A case study," *J. Cleaner Prod.*, vol. 315, Sep. 2021, Art. no. 128048.
- [10] J. Marín, L. Parra, J. Rocher, S. Sendra, J. Lloret, P. V. Mauri, and A. Masaguer, "Urban lawn monitoring in smart city environments," *J. Sensors*, vol. 2018, Jul. 2018, Art. no. 8743179.

- [11] V. K. Solanki, M. Venkatesan, and S. Katiyar, "Conceptual model for smart cities: Irrigation and highway lamps using IoT," *Int. J. Interact. Multimedia Artif. Intell.*, vol. 4, no. 3, pp. 28–33, 2017.
- [12] L. Cano, C. Ortega, A. G. Talaera, and L. Lazo, "Smart city park irrigation system: A case study of San Isidro, Lima—Peru," *Multidisciplinary Digit. Publishing Inst. Proc.*, vol. 2, no. 19, p. 1227, 2018.
- [13] A. Glória, C. Dionisio, G. Simões, J. Cardoso, and P. Sebastião, "Water management for sustainable irrigation systems using Internet-of-Things," *Sensors*, vol. 20, no. 5, p. 1402, Mar. 2020.
- [14] L. Parra, J. Marín, P. V. Mauri, J. Lloret, V. Torices, and A. Massager, "Scatternet formation protocol for environmental monitoring in a smart garden," *Netw. Protocols Algorithms*, vol. 10, no. 3, p. 63, Jan. 2019.
- [15] S. K. A. Hossain, M. A. Rahman, and M. A. Hossain, "Edge computing framework for enabling situation awareness in IoT based smart city," *J. Parallel Distrib. Comput.*, vol. 122, pp. 226–237, Dec. 2018.
- [16] S. K. Mousavi, A. Ghaffari, S. Besharat, and H. Afshari, "Improving the security of Internet of Things using cryptographic algorithms: A case of smart irrigation systems," *J. Ambient Intell. Hum. Comput.*, vol. 12, no. 2, pp. 2033–2051, Feb. 2021.



LAURA GARCÍA received the bachelor's degree in telecommunications technology engineering and the master's degree in digital post production from the Polytechnic University of Valencia, in 2015 and 2016, respectively, the master's degree in business administration from the Universidad Católica San Antonio de Murcia, in 2020, the Ph.D. degree in telecommunications from the Polytechnic University of Valencia, in 2021, and the Ph.D. degree in computer science from the Université de Mulhouse Haute-Alsace, in 2021. She is the author or coauthor of several articles in SCI journals. She has been involved in several organization committees of international conferences, since 2016. Her research interests include precision agriculture, ambient monitoring and water quality monitoring systems, and the design of architectures and protocols for the aforementioned purposes.



ABDULAZIZ ALDEGHEISHEM received the bachelor's degree in planning & urban design from the College of Architecture and Planning, King Saud University, the master's degree in city planning from the University of Pennsylvania, Philadelphia, PA, USA, in 2001, and the Ph.D. degree in urban planning and spatial information from the University of Illinois at Urbana-Champaign, USA, in 2006. He also obtained a Certificate in Urban and Regional Planning Studies from the MIT, Cambridge, MA, USA. He worked as the Head of the Urban Planning Department, in 2012. He is currently the Dean of the College of Architecture and Planning and an Associate Professor with the Department of Urban Planning, College of Architecture and Planning, King Saud University. He also works as an Adviser with the Vision Realization Office (VRO) at the university. He is the Supervisor of the Traffic Safety Technologies Chair. His research interests include role of spatial information in urban planning and management, also he focuses on areas related to urban planning, spatial management, and smart city technologies.



JAIME LLORET (Senior Member, IEEE) received the B.Sc. and M.Sc. degrees in physics, in 1997, the B.Sc. and M.Sc. degrees in electronic engineering, in 2003, and the Ph.D. (Dr.Eng.) degree in telecommunication engineering, in 2006. He is a Cisco Certified Network Professional Instructor and he has seven Cisco Networking Academy Certifications. He has the Hewlett-Packard IT Architect Certification. He worked as a Network Designer and Administrator in several enterprises.

He has been the Chair of the Integrated Management Coastal Research Institute (IGIC), since January 2017. He was the Founder of the "Communications and Networks" Research Group, IGIC. He is currently an Associate Professor with the Polytechnic University of Valencia. He is the Head (and Founder) of the "Active and Collaborative Techniques and Use of Technologic Resources in the Education (EITACURTE)" Innovation Group. He is the Director of the University Diploma "Redes y Comunicaciones de Ordenadores" and he has been the Director of the University Master "Digital Post Production," during 2012–2016. Since 2016, he has been the Spanish Researcher with highest H-index in the telecommunications journal list according to Clarivate Analytics Ranking. Moreover, he is included in the world's top 2% scientists according to the Stanford University List. He has been involved in more than 500 program committees of international conferences, and more than 160 organization and steering committees. He has led many local, regional, national, and European projects. He has authored 14 books and has more than 700 research papers published in national and international conferences and international journals (more than 400 with ISI Thomson JCR). He is an ACM Senior, an IARIA Fellow, and an EAI Fellow. He is an Advisory Board Member of the *International Journal of Distributed Sensor Networks* (both with ISI Thomson Impact Factor). He was the Vice-Chair of the Europe/Africa Region of Cognitive Networks Technical Committee (IEEE Communications Society), during 2010–2012, and the Vice-Chair of the Internet Technical Committee (IEEE Communications Society and Internet Society), during 2011–2013. He has been the Internet Technical Committee Chair (IEEE Communications Society and Internet Society), during 2013–2015. He was the Chair of the Working Group of the Standard IEEE 1907.1, from 2013 to 2018. He has been the general chair (or co-chair) of 72 international workshops and conferences. He is an IARIA Journals Board Chair (eight journals). Furthermore, he is (or has been) an associate editor of 46 international journals (16 of them with ISI Thomson Impact Factor). He has been the co-editor of 54 conference proceedings and a guest editor of several international books and journals. He is the Editor-in-Chief of the *Ad Hoc and Sensor Wireless Networks* (with ISI Thomson Impact Factor), the international journal *Networks Protocols and Algorithms*, and the *International Journal of Multimedia Communications*. Moreover, he is an Associate Editor of *Sensors* in the section sensor networks.



of several private universities in Saudi Arabia.

NABIL ALRAJEH received the Ph.D. degree in biomedical Informatics engineering from Vanderbilt University, USA. He worked as a Senior Advisor with the Ministry of Higher Education, his role was implementing development programs, including educational affairs, strategic planning and research and innovation. He is currently a Professor of health informatics at King Saud University and the Rector of Prince Mugrin Bin Abdulaziz University. He is a board member