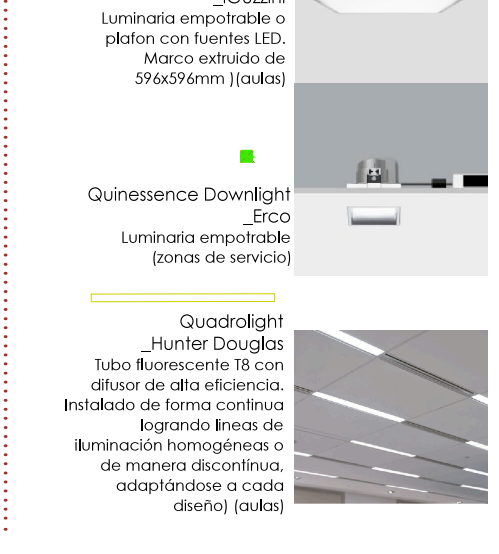


PFC_T1

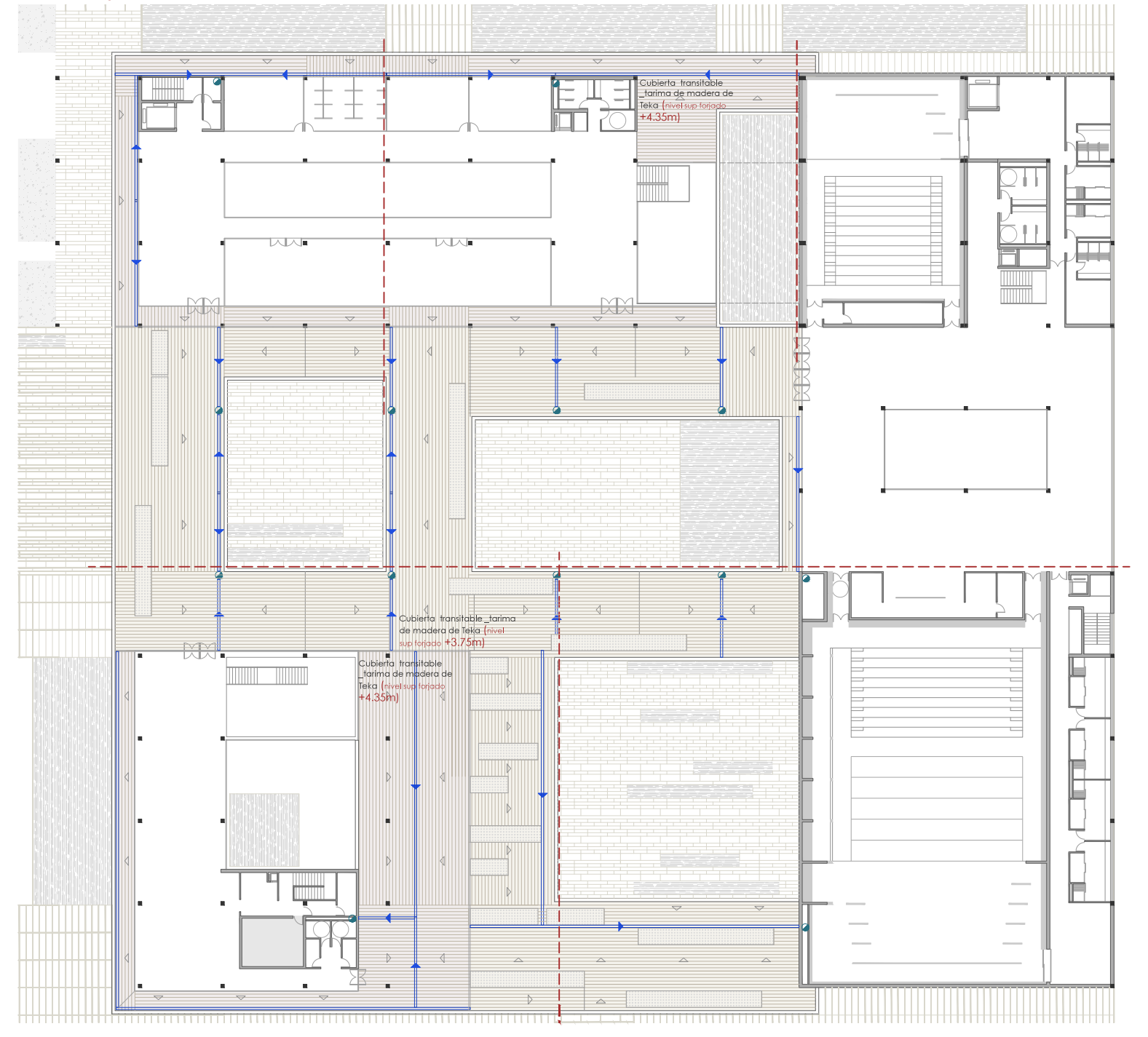
INMA CONEJERO GUILLÉN



Leyenda:

- - - Perímetro del sector de incendio
- Recorrido de evacuación
- Protección de las escaleras
- Locales de riesgo
- Boca de Incendio Equipada (25mm)
- Extintor empotrado en pared
- Pulsador de alarma
- Señal de emergencia
- Iluminado de emergencia
- Señal dirección recorrido de evacuación
- Rociador de agua automática / Sprinkler
- H-Bombas que actúan sobre la balsa

This architectural floor plan depicts a large, modern building complex, likely a university or corporate headquarters. The plan is oriented with North at the top. The building consists of several interconnected wings and a central atrium. The central atrium is a large, open space with a high ceiling, featuring a series of curved, white, sculptural elements. To the left of the atrium is a large, rectangular room with a grid of small, square tables and chairs, possibly a cafeteria or a large meeting room. To the right of the atrium is a large, rectangular room with a grid of small, square tables and chairs, possibly a cafeteria or a large meeting room. The building is surrounded by a large parking lot and a landscaped area with trees and walkways. The plan includes various rooms, including offices, meeting rooms, a large auditorium, and a central atrium. The building is surrounded by a large parking lot and a landscaped area with trees and walkways. The plan includes various rooms, including offices, meeting rooms, a large auditorium, and a central atrium.



This diagram shows the structural layout of the first floor. It features a grid of columns and beams. Key elements include:

- Dimensions:** Horizontal dimensions are 7.5m (repeated 10 times) and 5.8m. Vertical dimensions are 7.5m (repeated 10 times) and 5.8m.
- Annotations:**
 - 'Nivel asiento foso ascensor - 0.80 m' (Elevator pit seat level - 0.80 m) with arrows pointing to specific locations.
 - 'Zapatas ▽-1.20m' (Foundations ▽-1.20m) pointing to a foundation area.
 - 'Losa c. ▽-3.05m' (Slab c. ▽-3.05m) pointing to a slab area.
- Structural Features:** A grid of columns (represented by squares) and beams (represented by lines). A large rectangular area on the right side is shaded gray, likely representing a different structural zone or a specific material area.

[illegible]