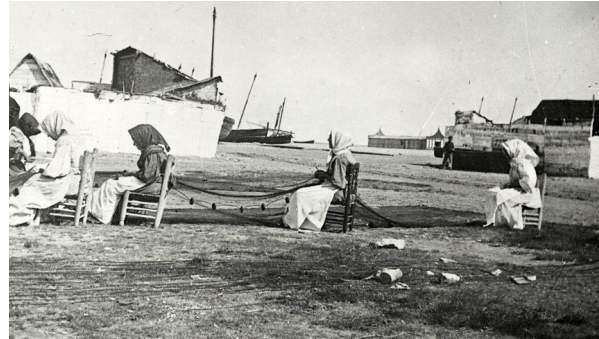


LA LONJA DE PESCADORES DEL CABAÑAL COMO PRETEXTO ...

pfc_T3

Marta Fernández Lacalle







LONJA DE PESCADORES



CASA DELS BOUS



Unir dos trazados urbanos



Permitir el paso hacia el mar



Aumentar espacios públicos:
plazas, zonas verdes
Mejorar calidad de las travesías

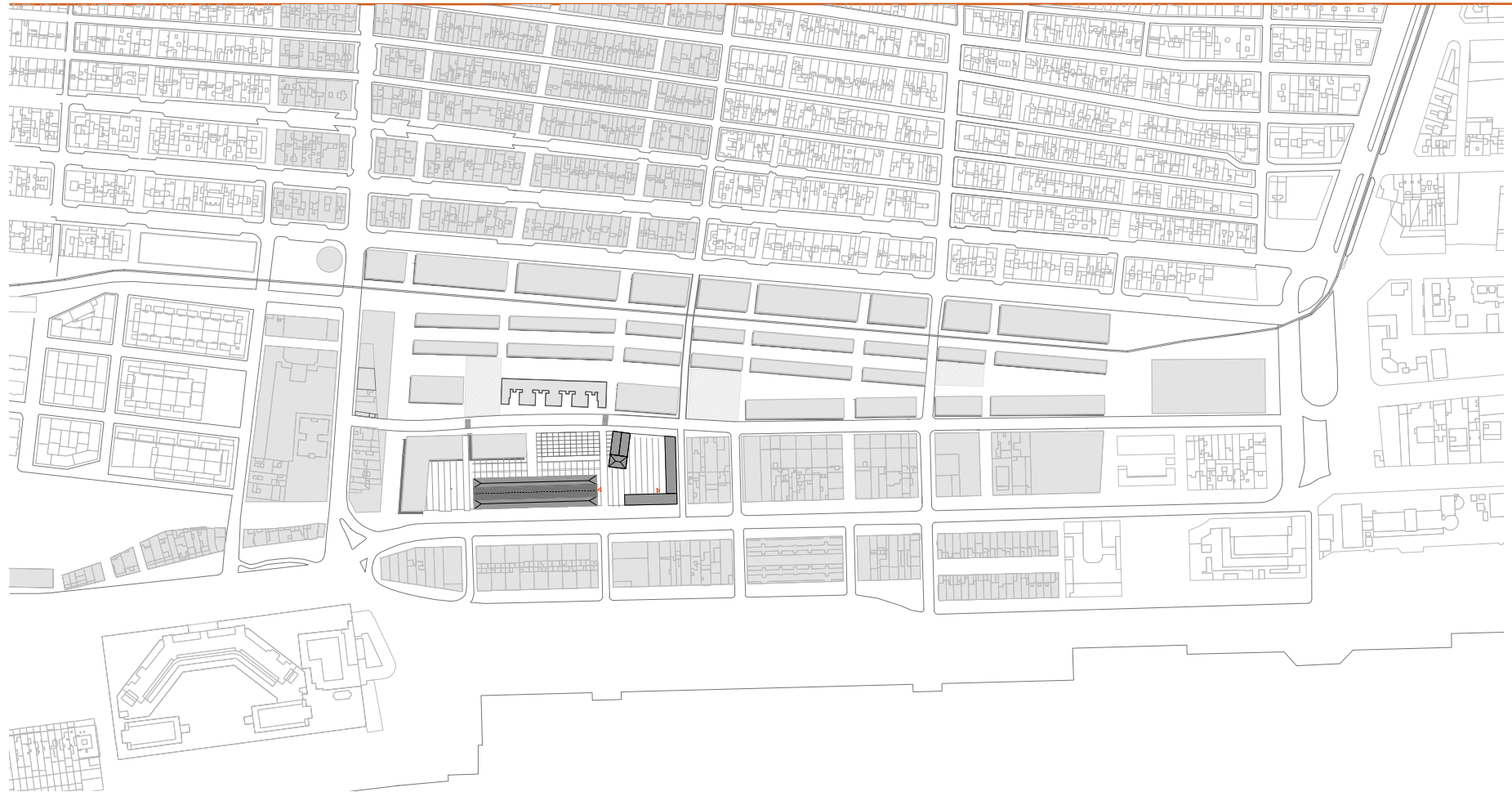
1_ORDENACIÓN

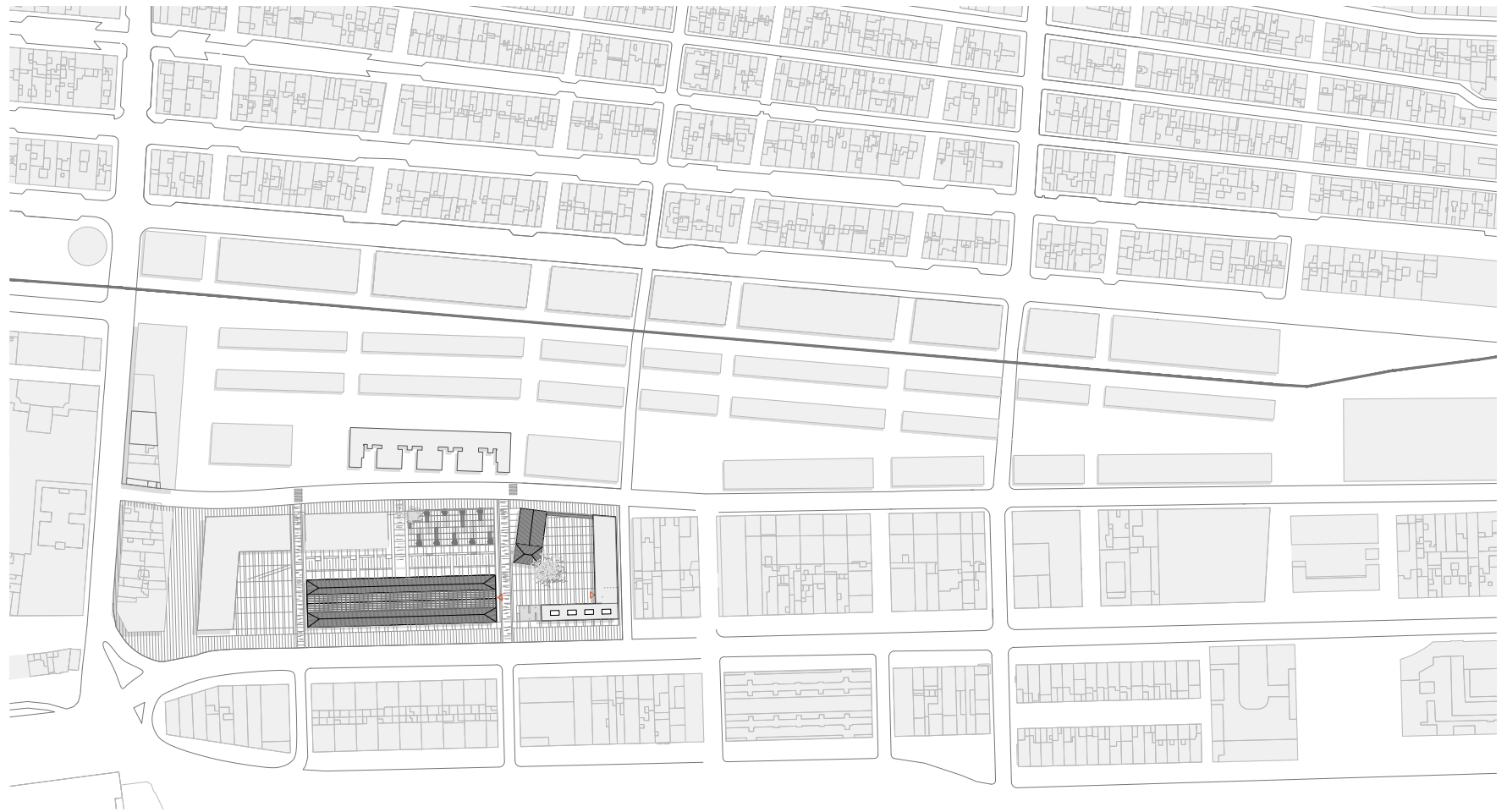
2_ESPACIOS PÚBLICOS

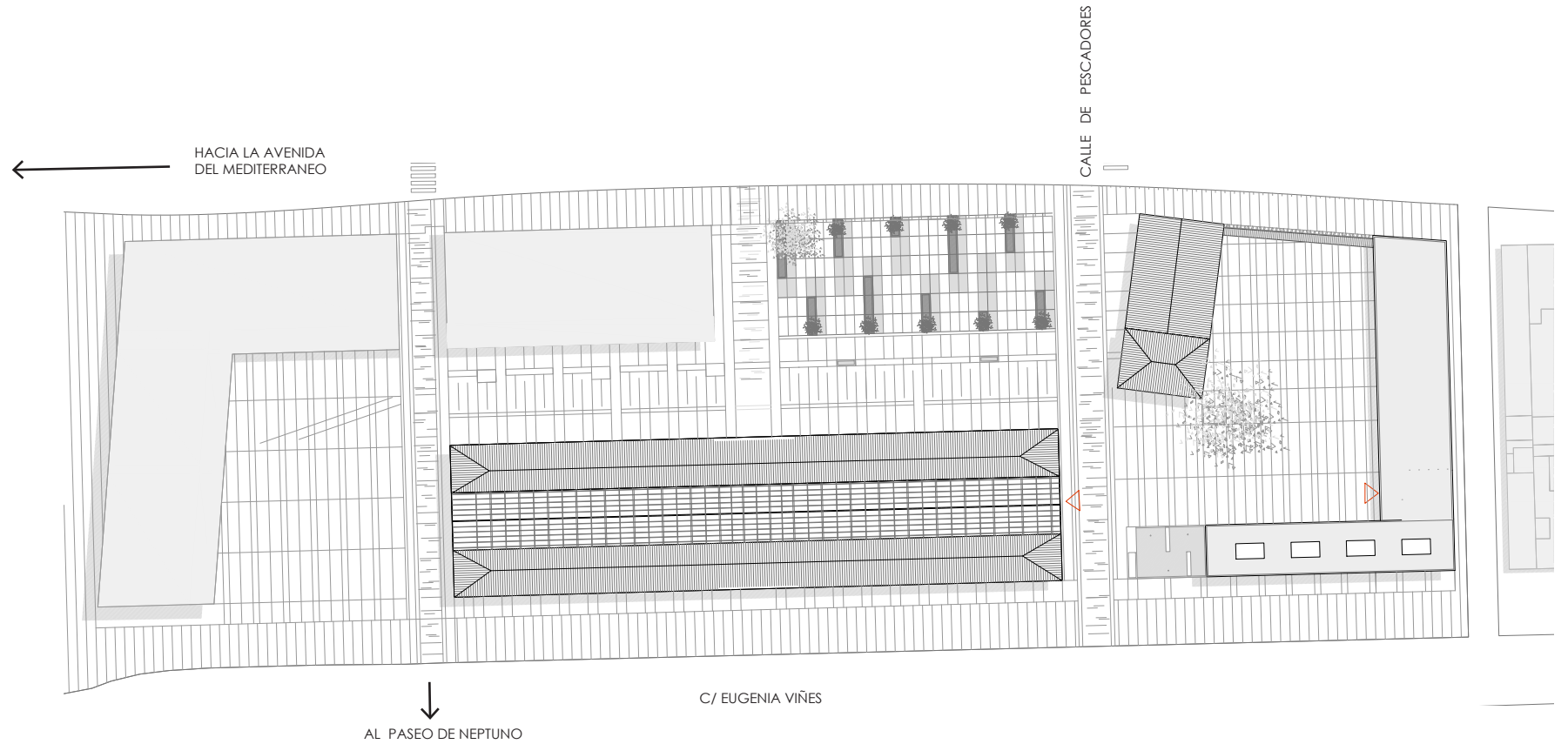
3_CIC

4_LONJA

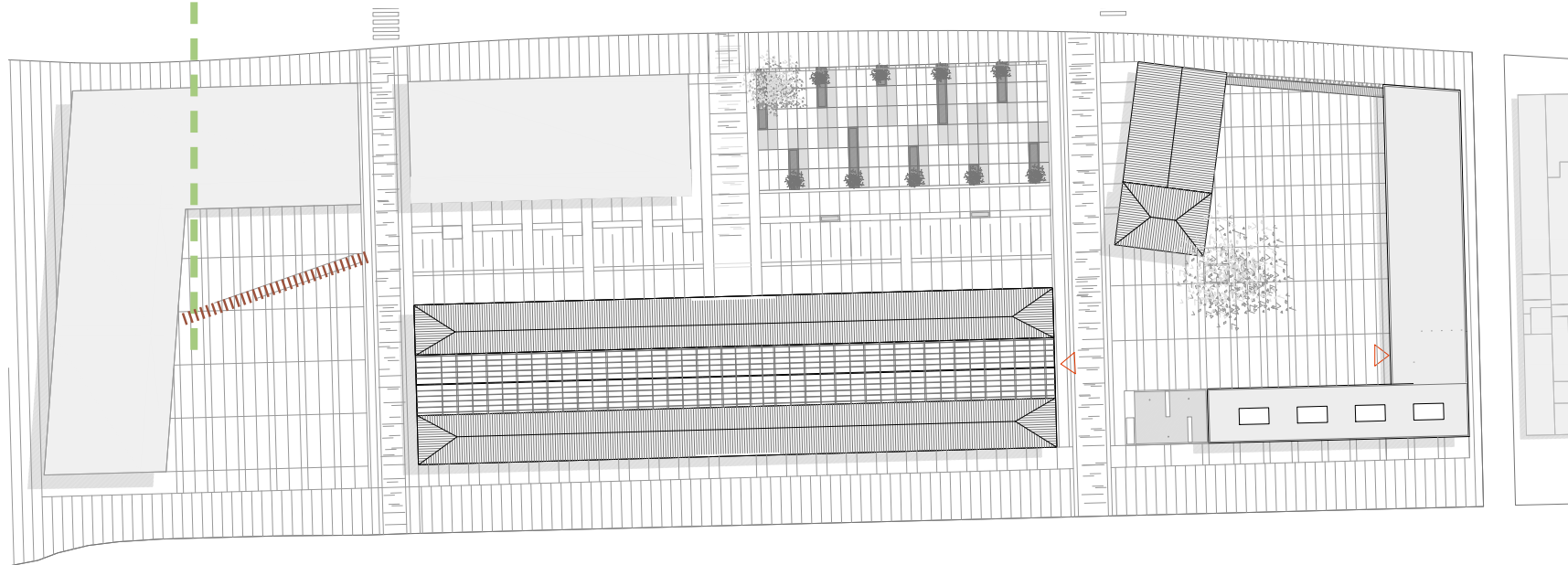
5_ANEXOS







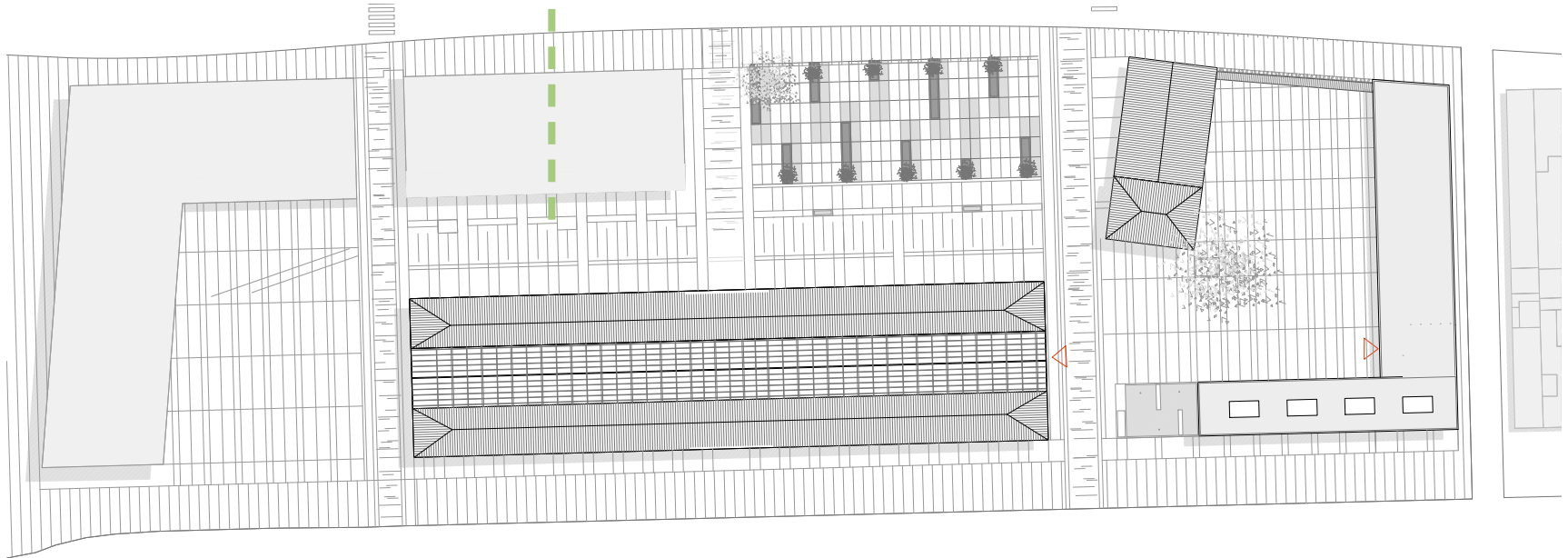
— Plaza dura
— ESPACIO A ESCALA DE BARRIO

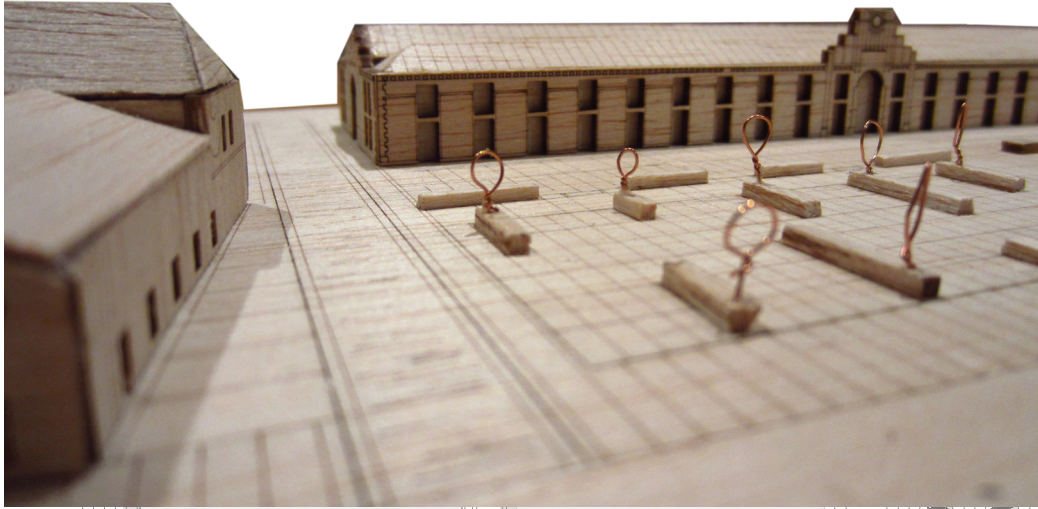


_ Paseo

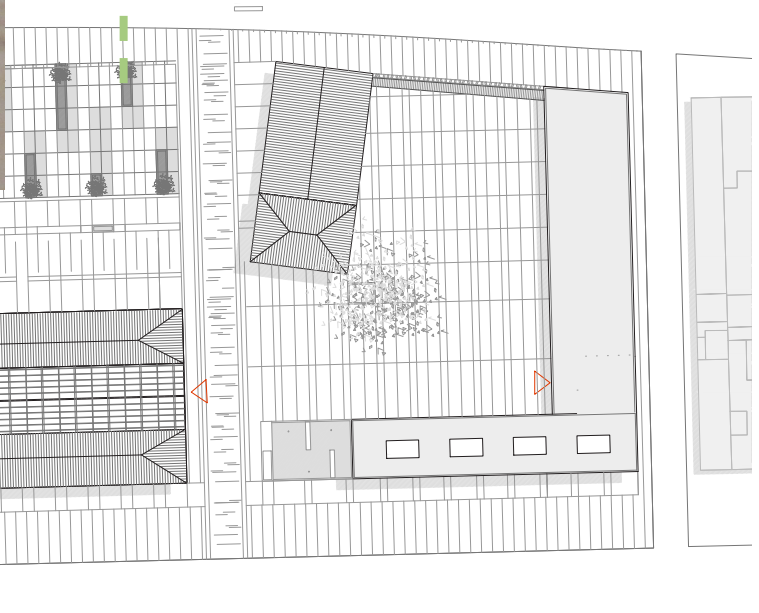
La Casa dels Bous como perspectiva de fondo

Exposición y venta de piezas creadas por los usuarios del CIC

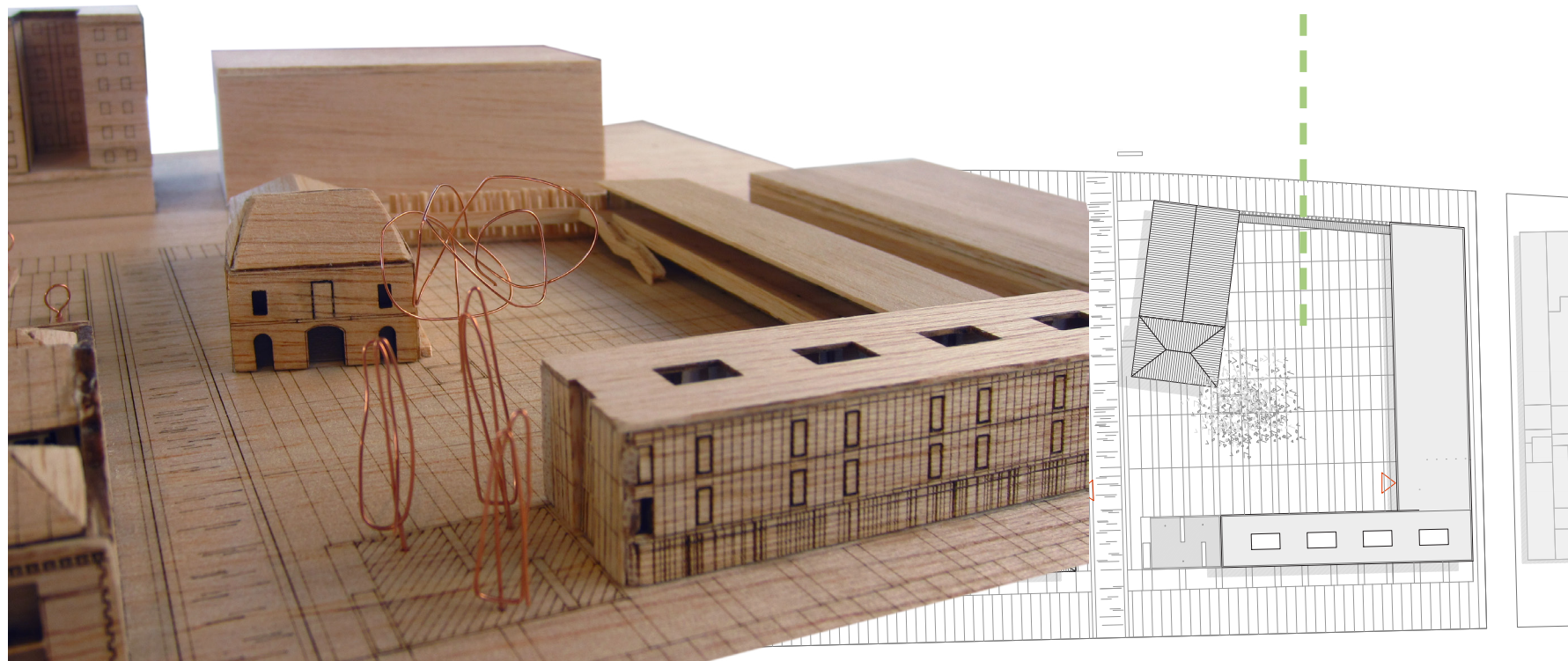




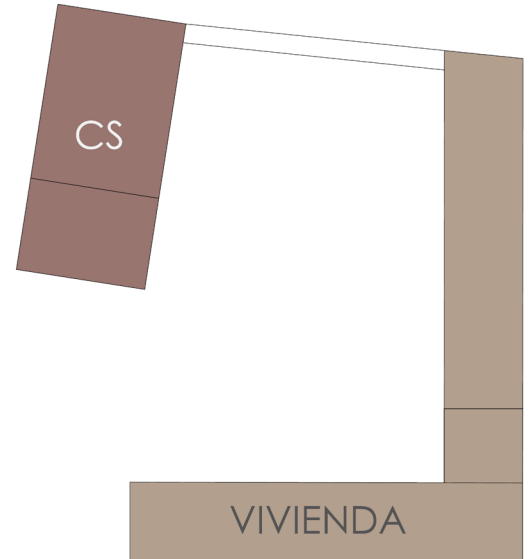
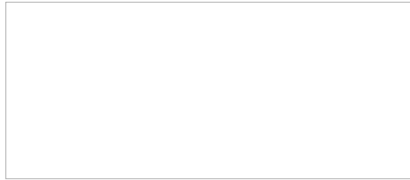
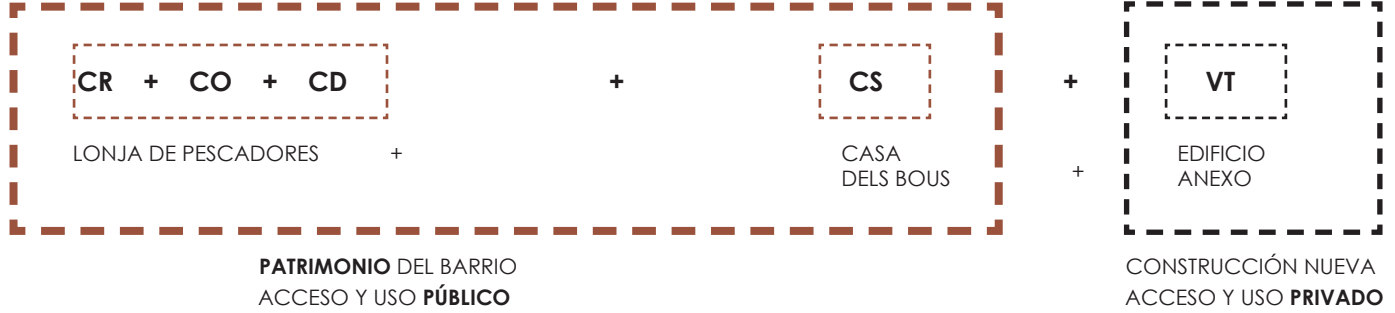
- _ Jardín "potager"
huerto urbano
actividades para los usuarios y vecinos del barrio

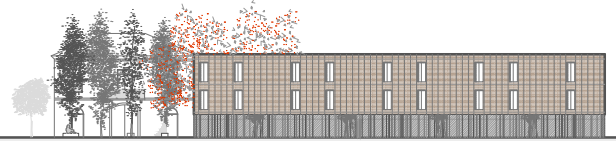


_ Espacio Cultural
Espacio semi-privado
para usuarios del CIC



CIC =





Calle Eugenia Vives



PLANTA BAJA

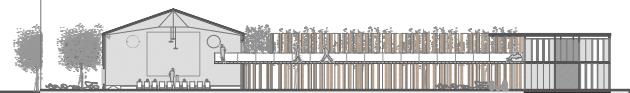
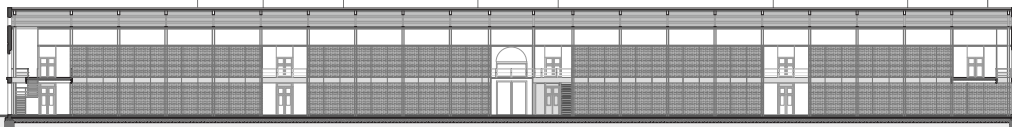
1_ORDENACIÓN

2_ESPACIOS PÚBLICOS

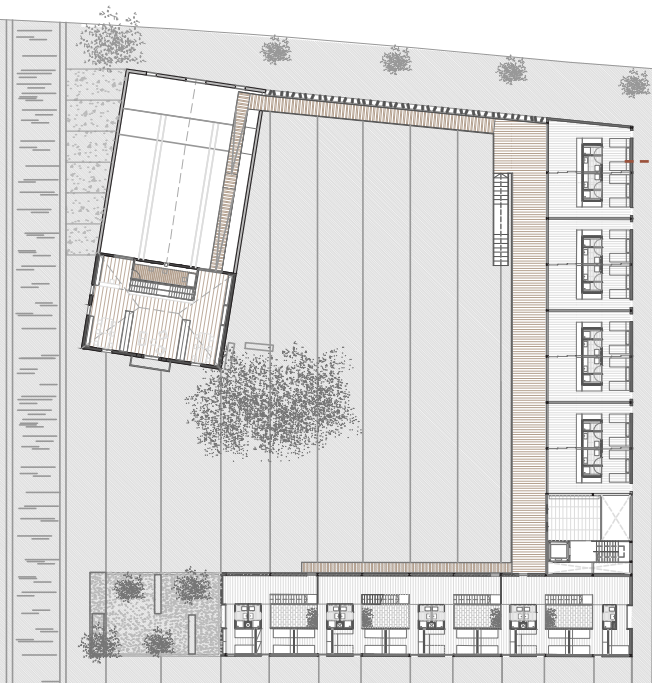
3_CIC

4_LONJA

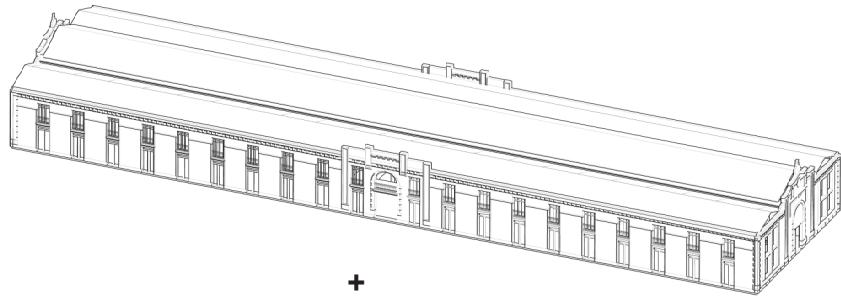
5_ANEXOS



seccion longitudinal

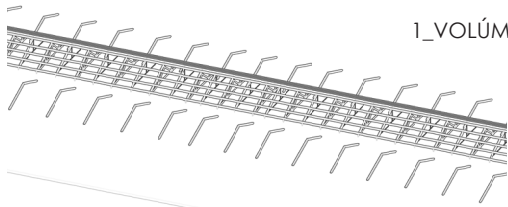


PLANTA PRIMERA



+

1_VOLÚMEN Y FACHADAS



+

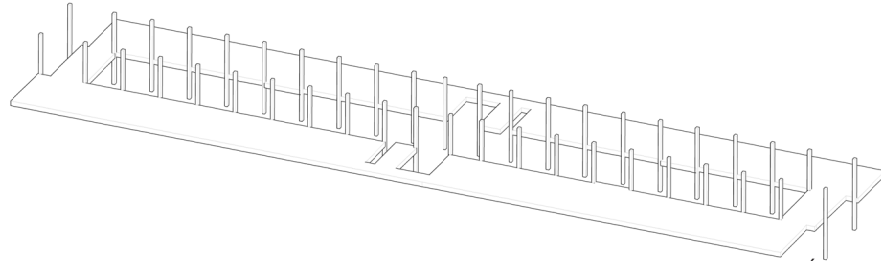
2_ALTURA CUBIERTAS
CERCHA NAVE CENTRAL



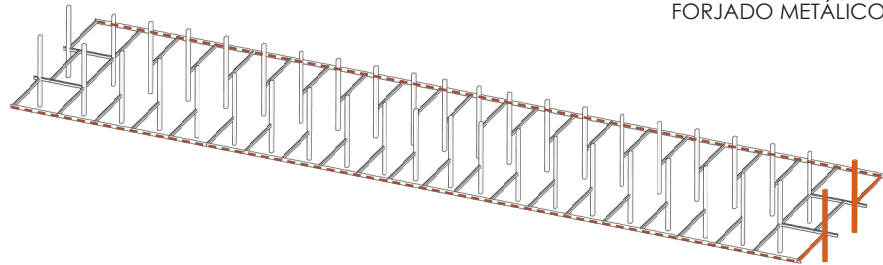
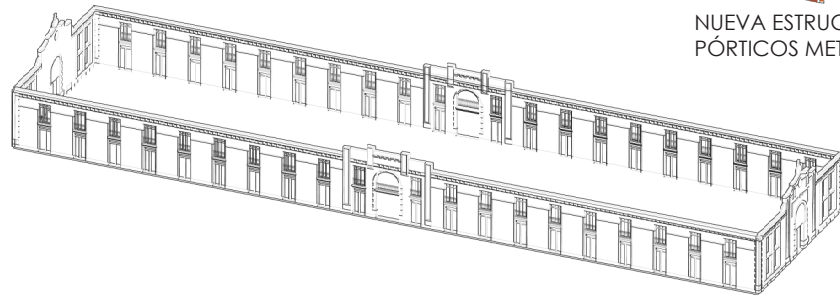
3_CONCEPTO DE
CALLE INTERIOR

PROPUESTA

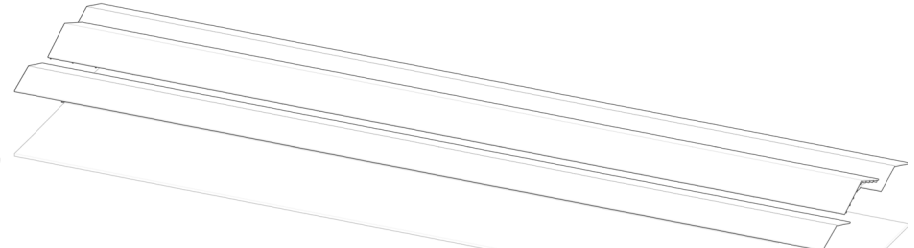




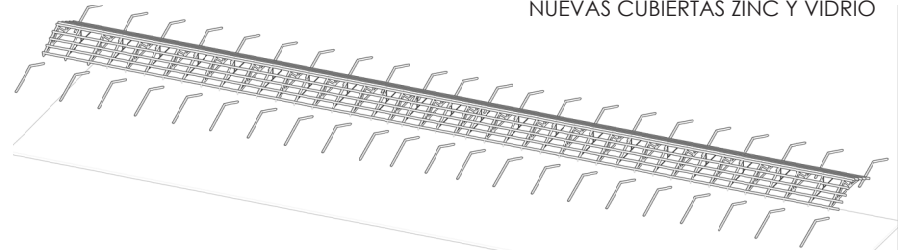
FORJADO METÁLICO

NUEVA ESTRUCTURA
PÓRTICOS METÁLICOS

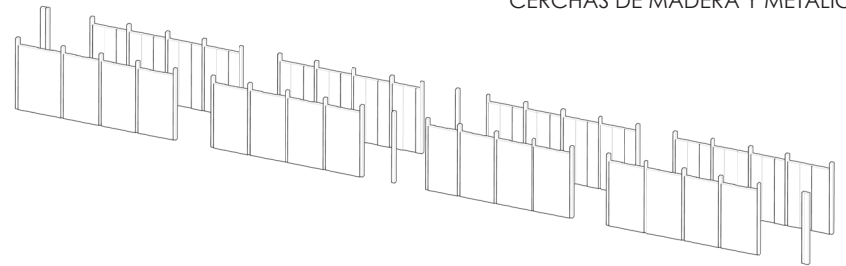
MUROS PERIMETRALES



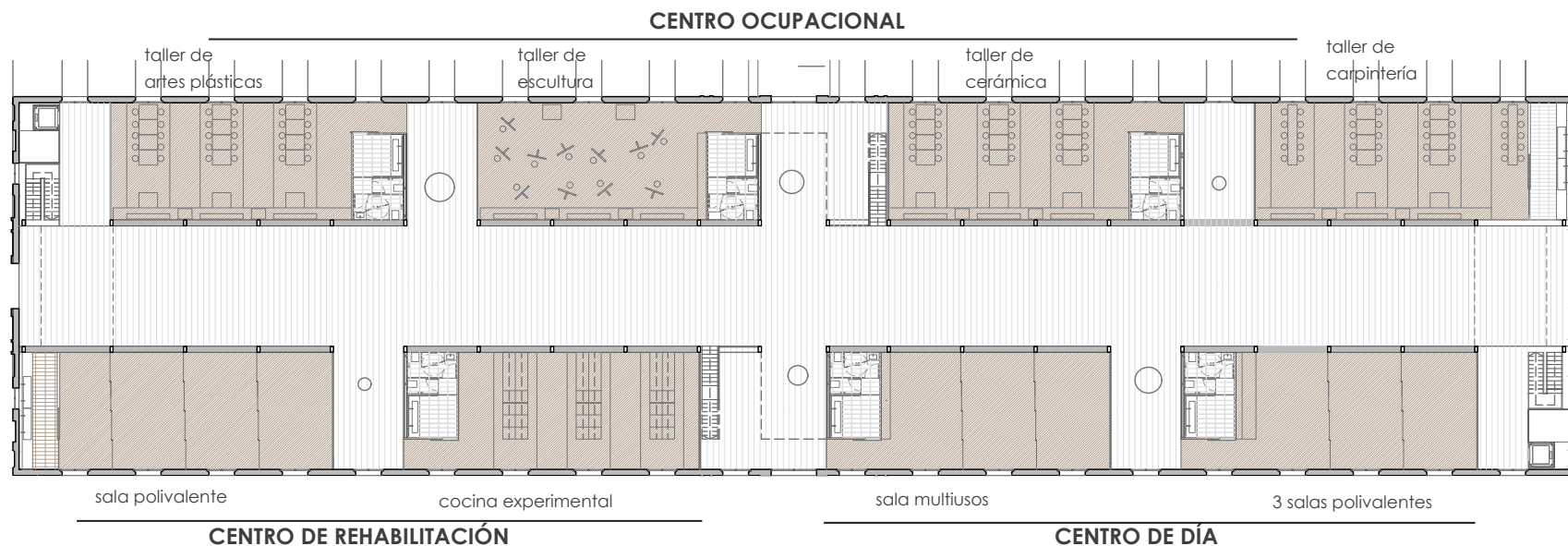
NUEVAS CUBIERTAS ZINC Y VIDRIO

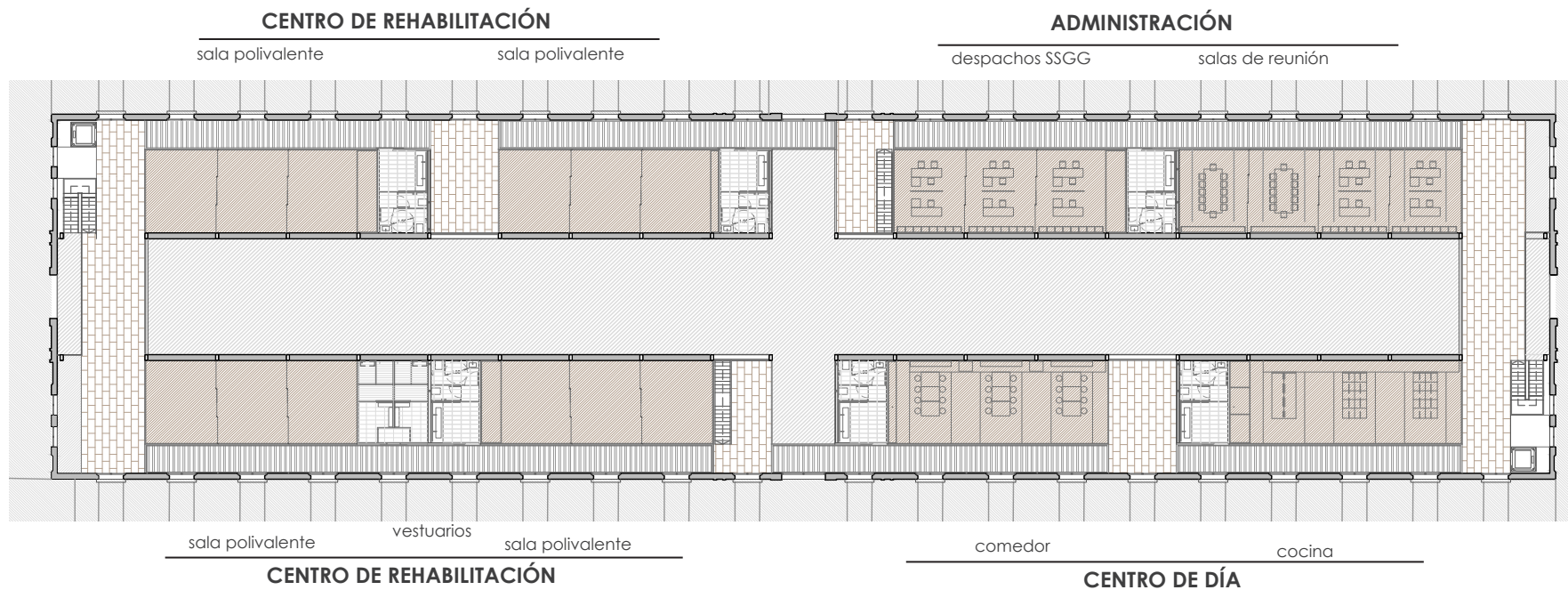


CERCHAS DE MADERA Y METÁLICAS

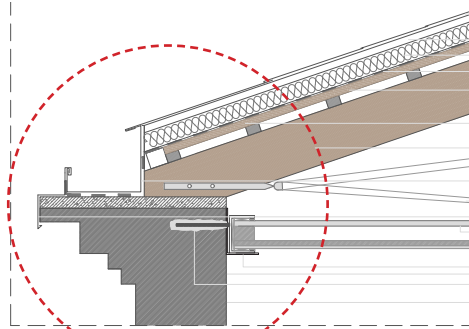


MUROS INTERIORES FÁBRICA DE LADRILLO



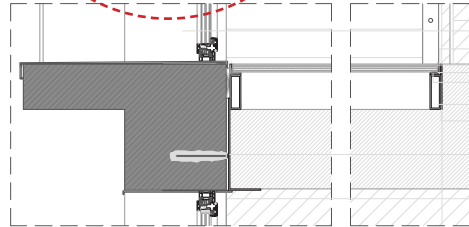


CUBIERTA LATERAL AISLADA DE CHAPA DE ZINC



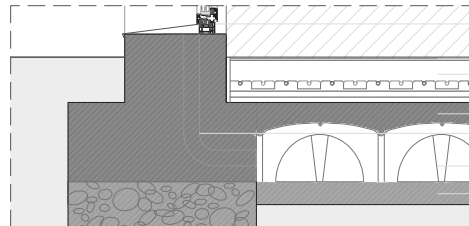
chapas de zinc unidas por
junta abizada
soporte de madera 20 mm
aislamiento térmico y acústico
lámina impermeable
tablero hidrófugo
conglomerado de madera
listones de madera 60 x 40 mm
viga de madera maciza
estructural 60x200mm
canalón de chapa de zinc
cables - tensores
pieza de remate de zinc con
panel de aluminio

chapa de acero plegada 4mm
pernos (varillas de anclaje por
inyección de acero inoxidable.
Ø12 longitud 260mm)
el espacio libre se rellena con
resinas epoxi

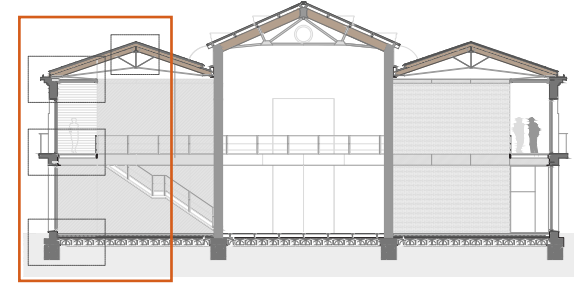
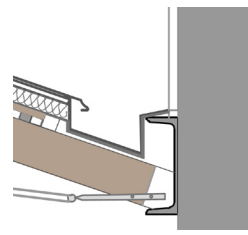
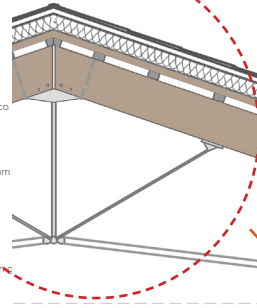
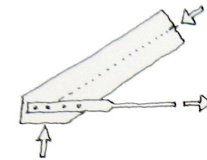


vierteaguas de chapa de zinc
perfil en L
doble vidrio unido con butiral
perfil de apoyo en silicona
vidrio simple
perfil tubular de soporte
chapa de acero de remate
pernos (varillas de anclaje por
inyección de acero inoxidable.
Ø12 longitud 260mm)
el espacio libre se rellena con
resinas epoxi

chapa de acero plegada 4mm
sistema de apoyo de las vigas en
el muro perimetral

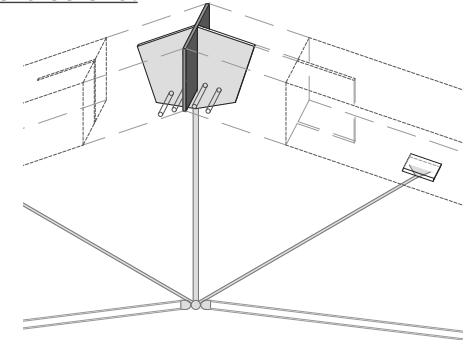


carpintería de aluminio Firstral
pavimento de grés
suelo radiante
capa de mortero
tubo de ventilación Ø10mm/2m
elemento de aligeramiento
de losas sanitarios
Cupolex
capa de hormigón aligerado

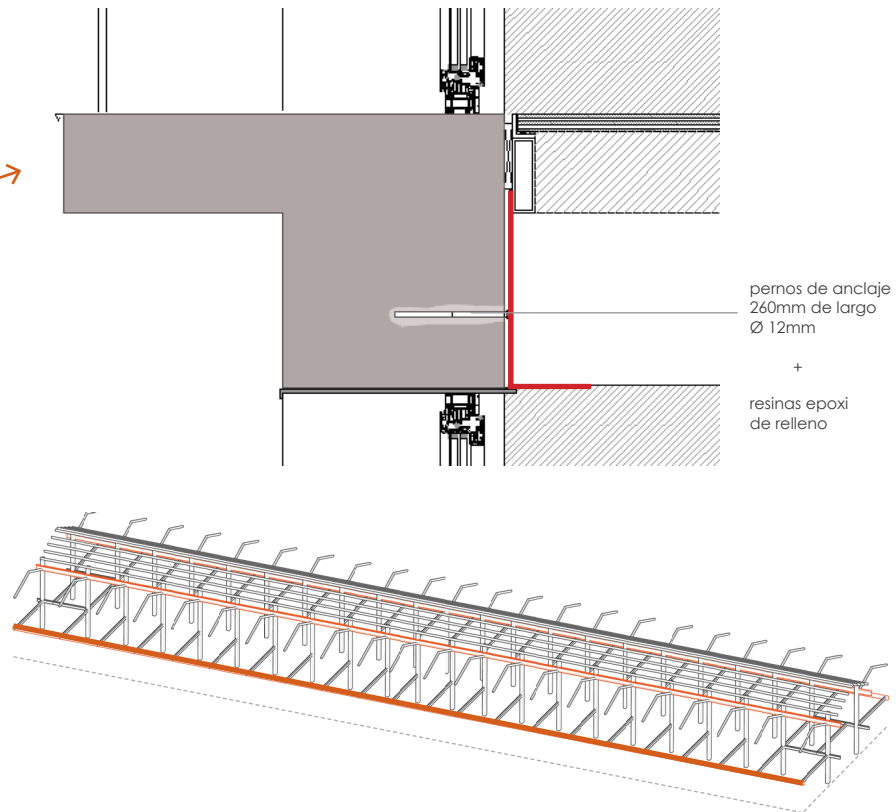
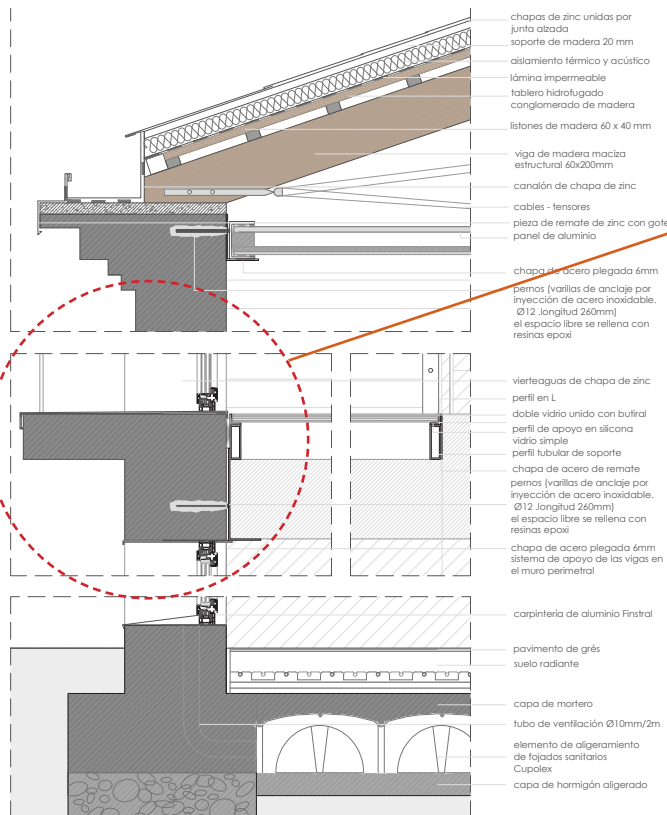
Mecanismo estructura de la cercha:

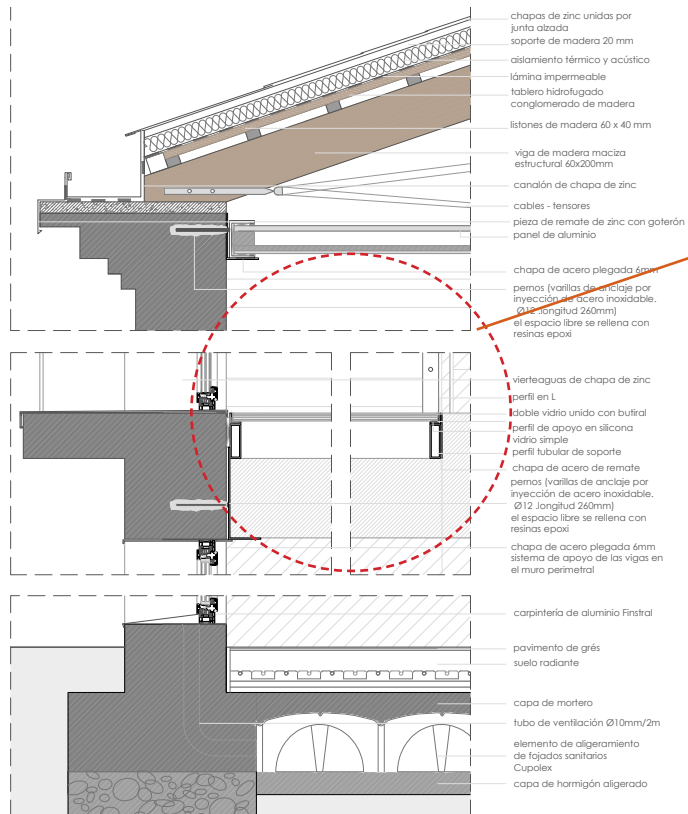
enlace entre par y tensor

enlace entre pares

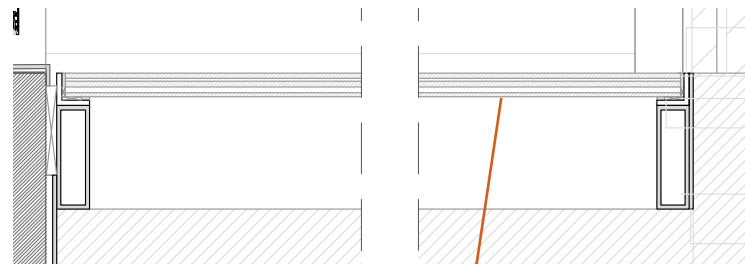


APOYO DE VIGAS EN LOS MUROS PERIMETRALES

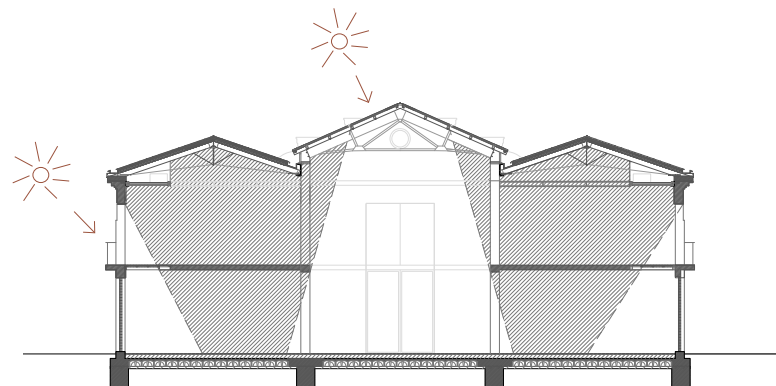




RECORRIDO DE COMUNICACIÓN P1 PAVIMENTO DE VIDRIO

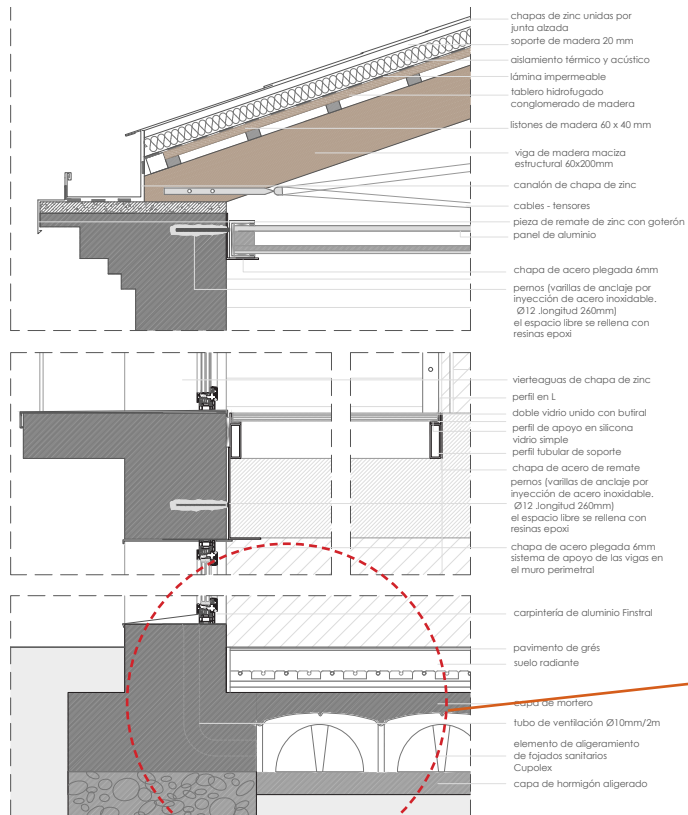


SAINT GOBAIN GLASS
 SGG-Lite floor

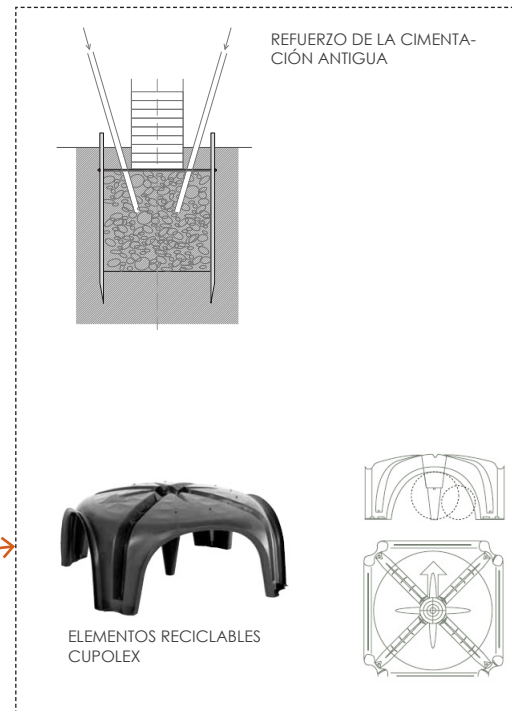


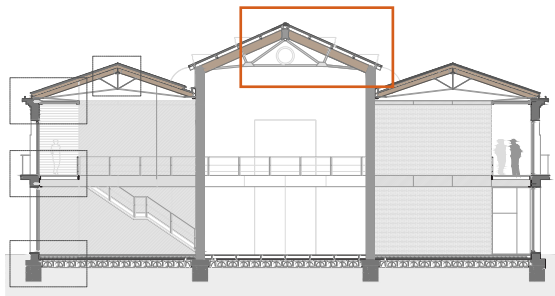
RECORRIDO DE COMUNICACIÓN P1



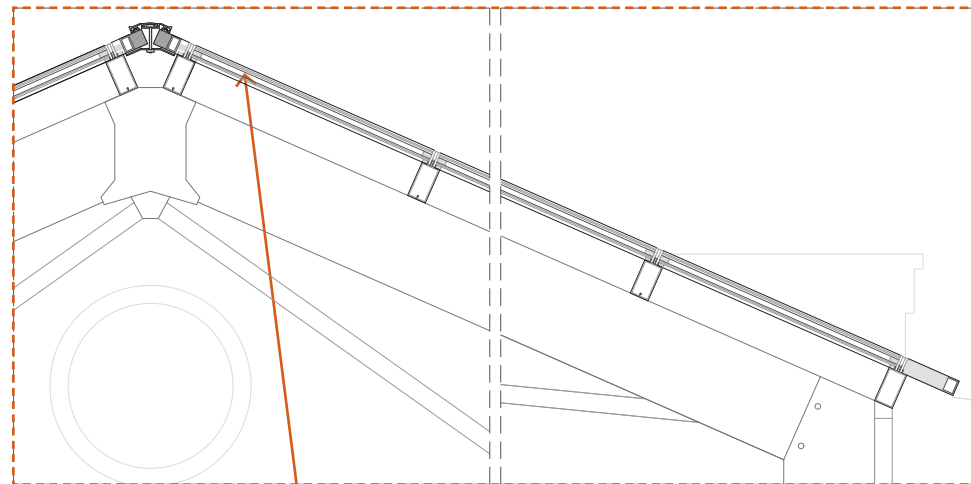


SOLERA VENTILADA





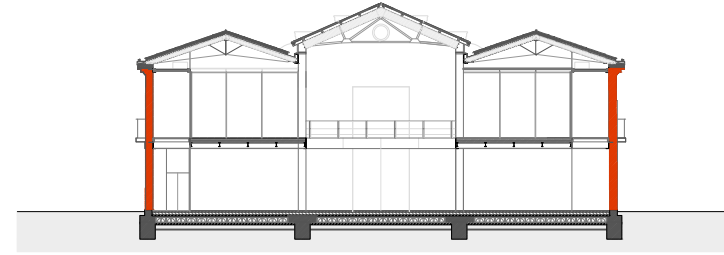
CUBIERTA CENTRAL ACRISTALADA



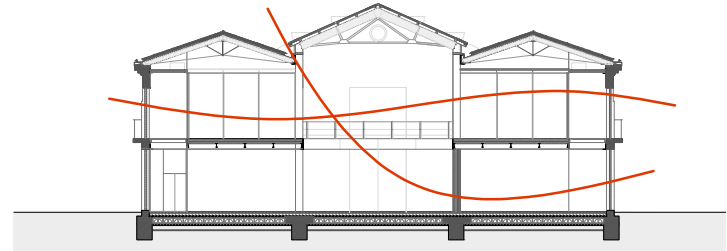
VIDRIO FOTOVOLTAICO

SOSTENIBILIDAD

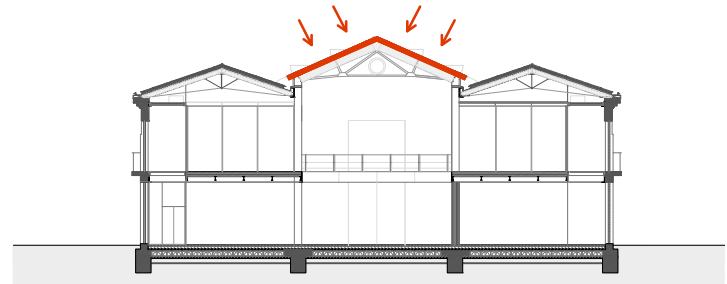
1 GRAN INERCIA TÉRMICA DE
LOS MUROS DE LADRILLO

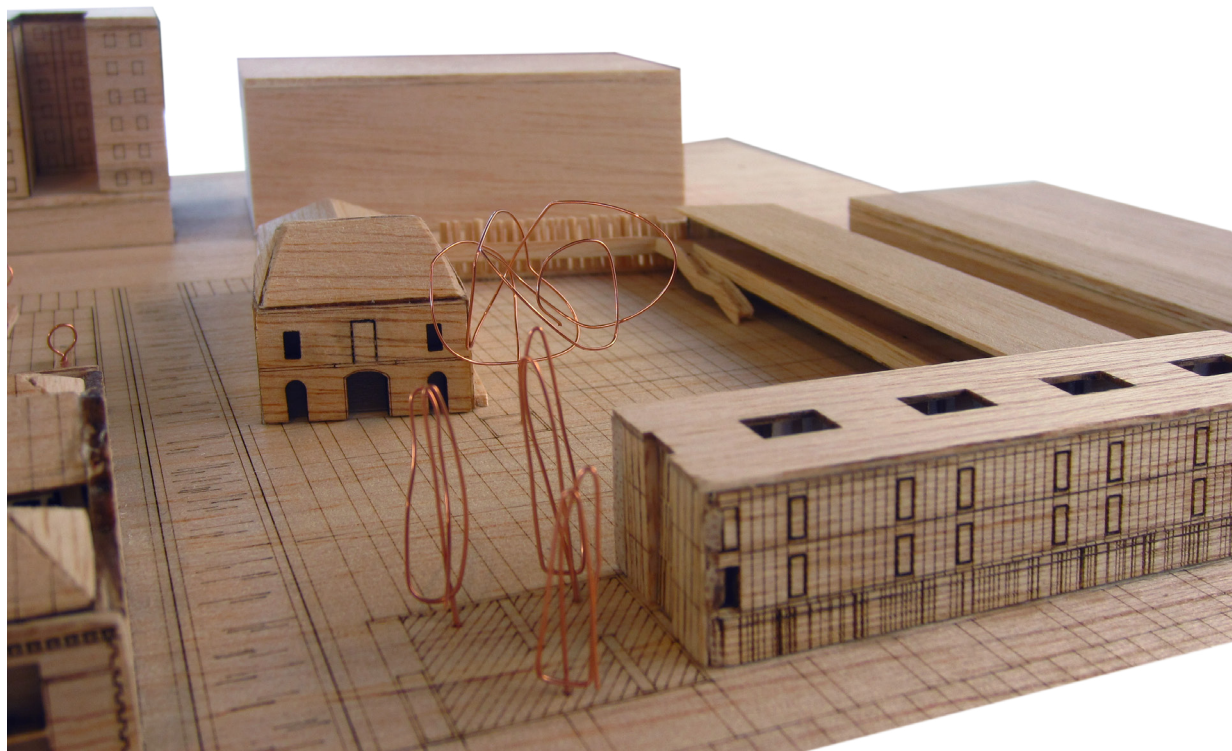


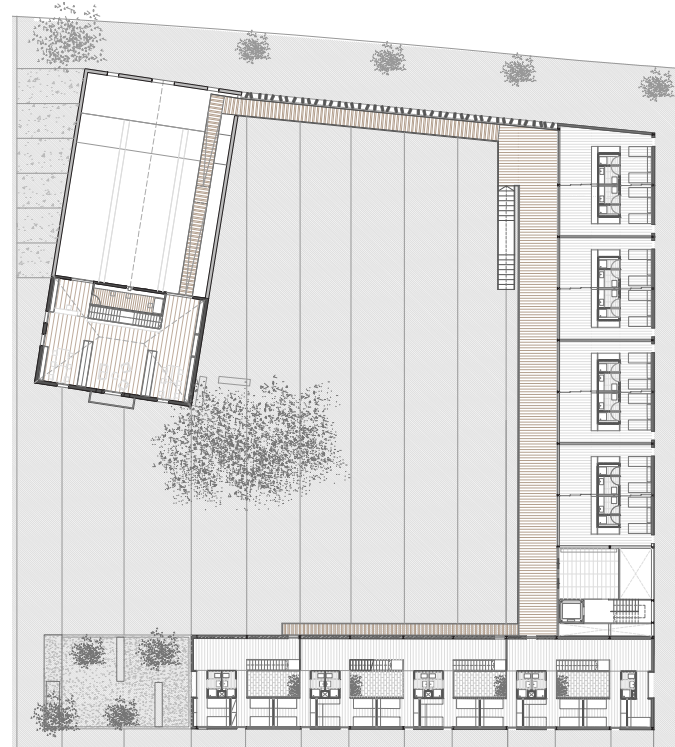
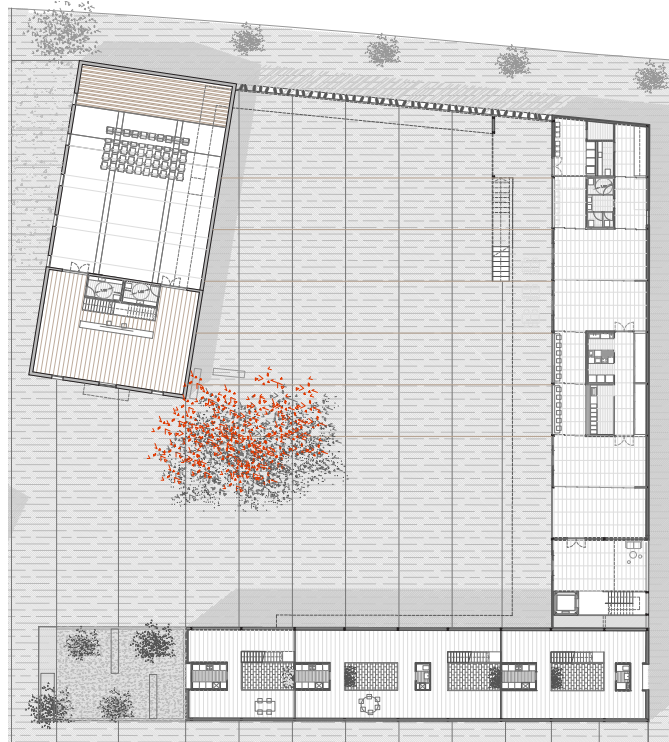
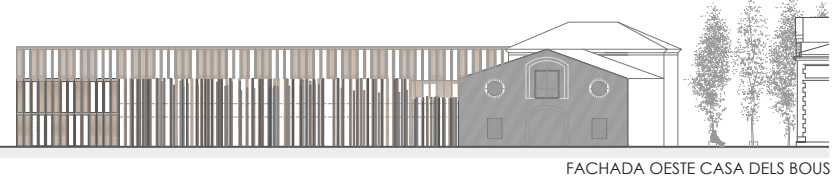
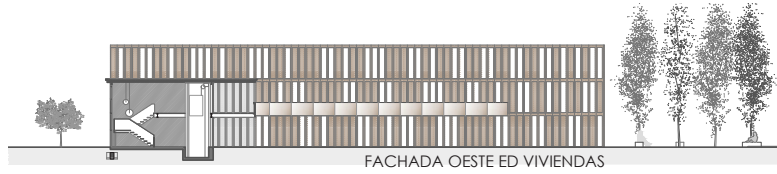
2 VENTILACIÓN CRUZADA



3 INSTALACIÓN FOTOVOLTAICA

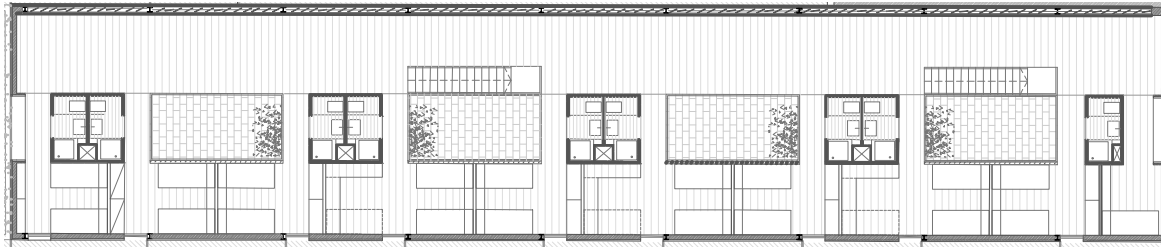






PLANTA BAJA

PLANTA PRIMERA



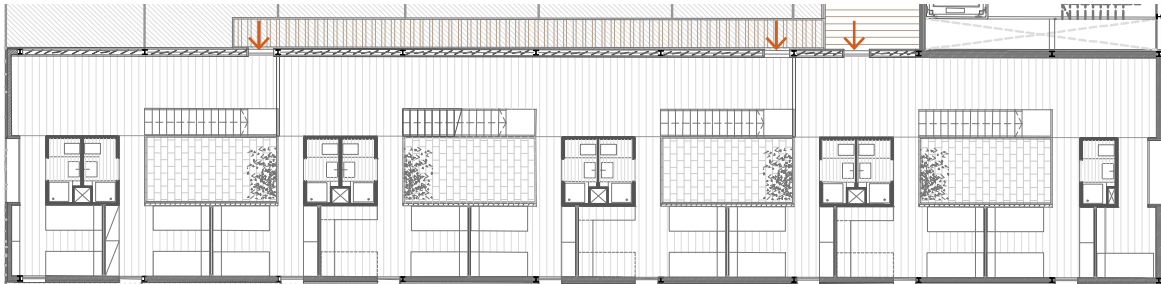
P2

ESPACIO CONTINUO

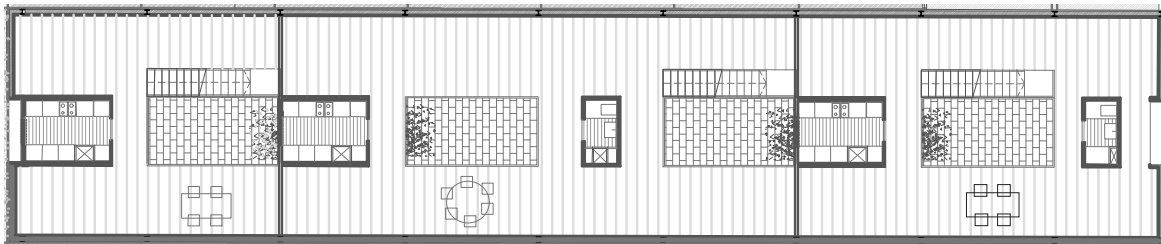
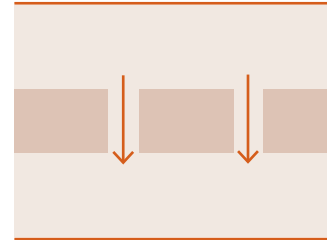
NUCLEOS HUMEDOS / PATIOS

ESPACIO COMPARTIMENTADO

ACCESOS POR PLANTA PRIMERA

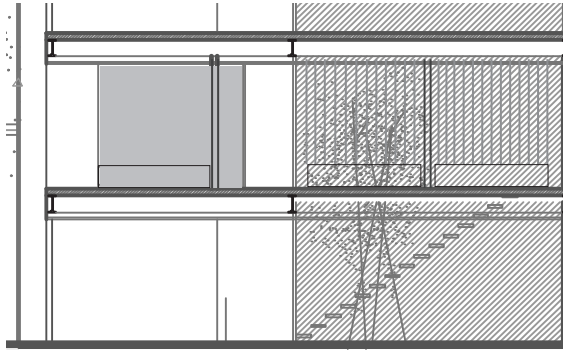


P1

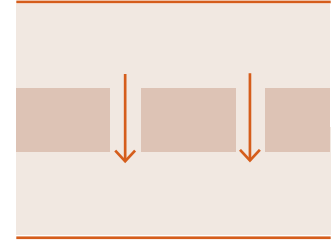


PB

VIVIENDA HOGAR
EN DUPLEX



VIVIENDA HOGAR
EN DUPLEX





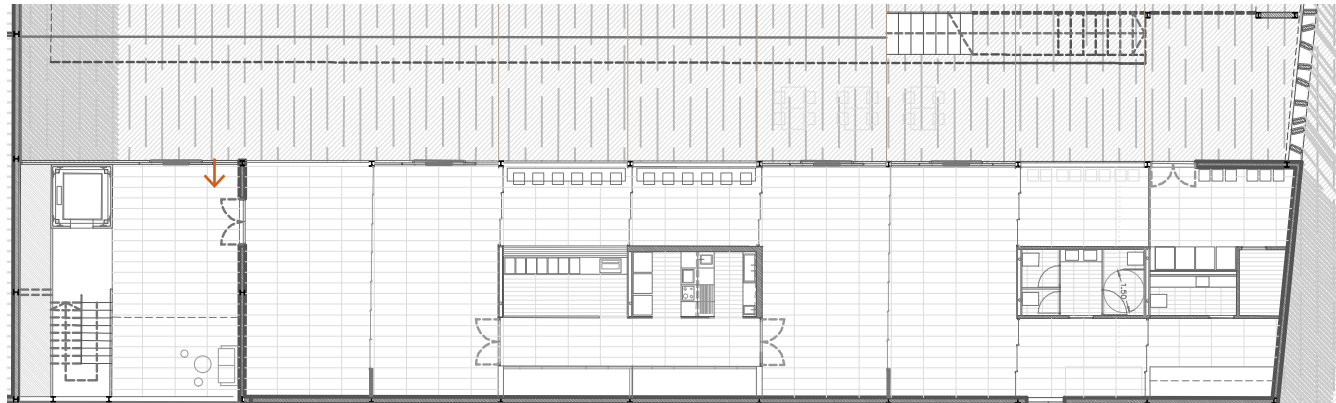
P1 _ ESTAR-ASEAR-DORMIR

PROLONGACIÓN DE LA VIVIENDA
CORREDOR ACCESO

ESPACIO CONTINUO DOS EN DOS

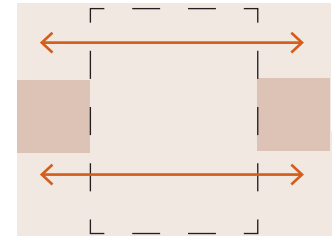
NUCLEOS HUMEDOS / ALMACENAJE

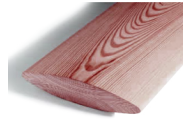
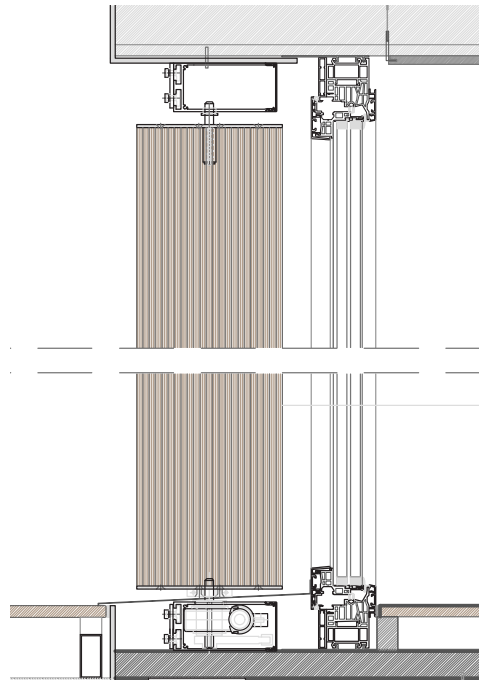
ESPACIO CONTINUO DOS A DOS



PB _ ESTAR-COMER-LAVAR

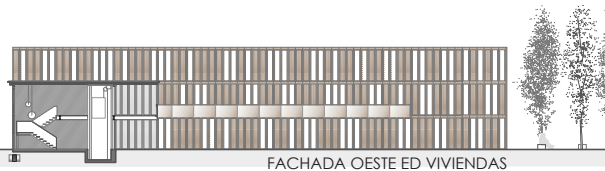
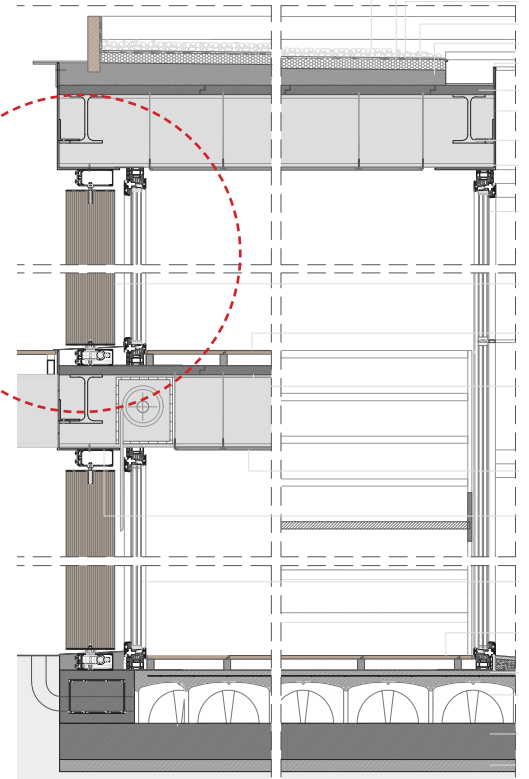
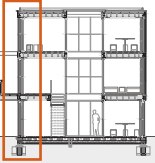
VIVIENDA
ESTUDIO



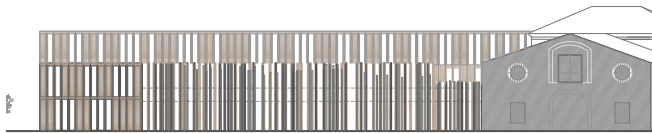


LAMAS ORIENTABLES DE MADERA

FACHADA OESTE



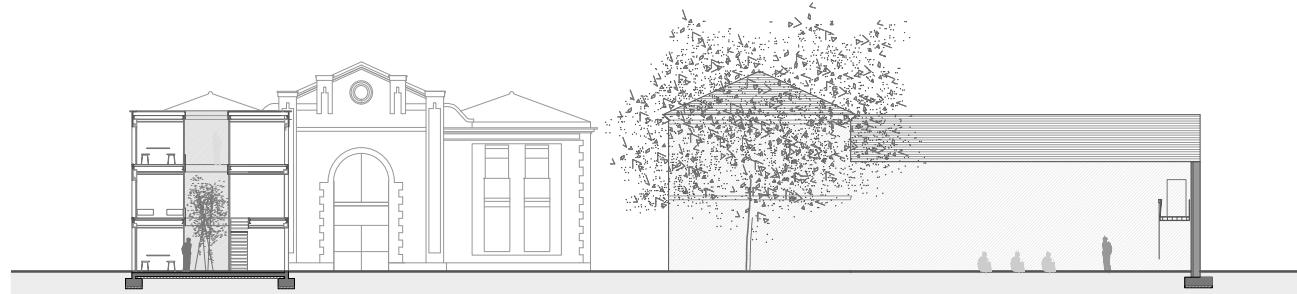
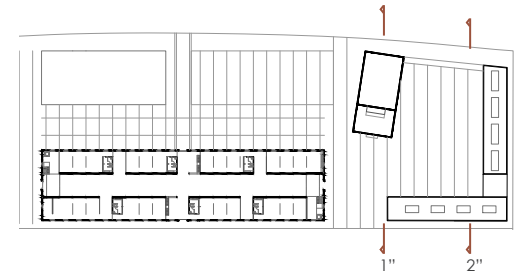
FACHADA OESTE ED VIVIENDAS

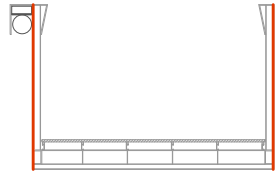


FACHADA OESTE CASA DELS BOUS

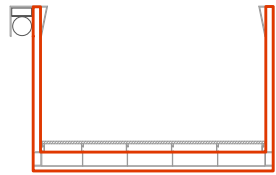


Plaza semi privada para los residentes del CIC, de espectáculos para usuarios y habitantes del barrio, espacio de encuentros y desencuentros.... espacio de vida.

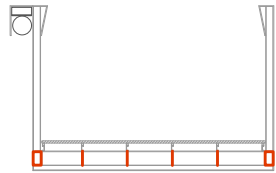




barandillas
vigas portantes



cuadernas-uni3n de vigas y
conformaci3n del vol3men



rigidizadores
rigidizaci3n horizontal superior
e inferior y conformaci3n de
la base del suelo

