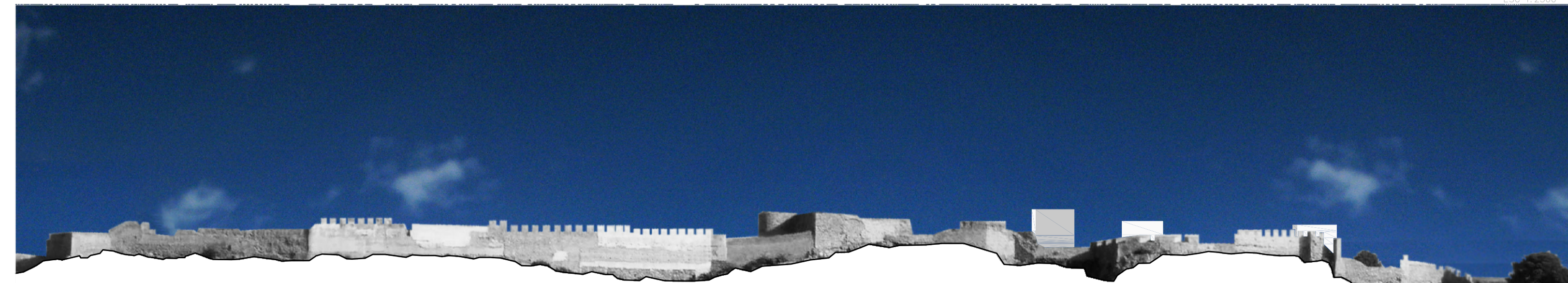




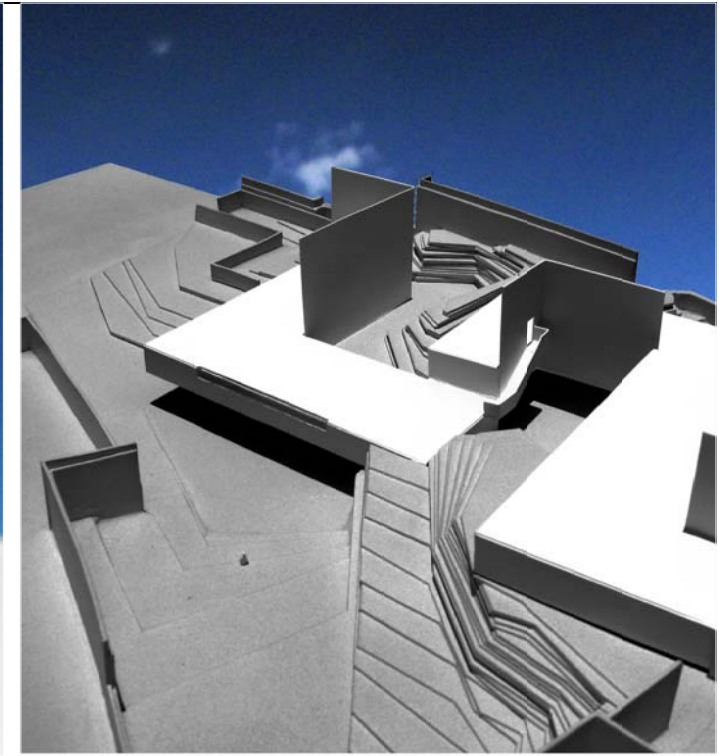
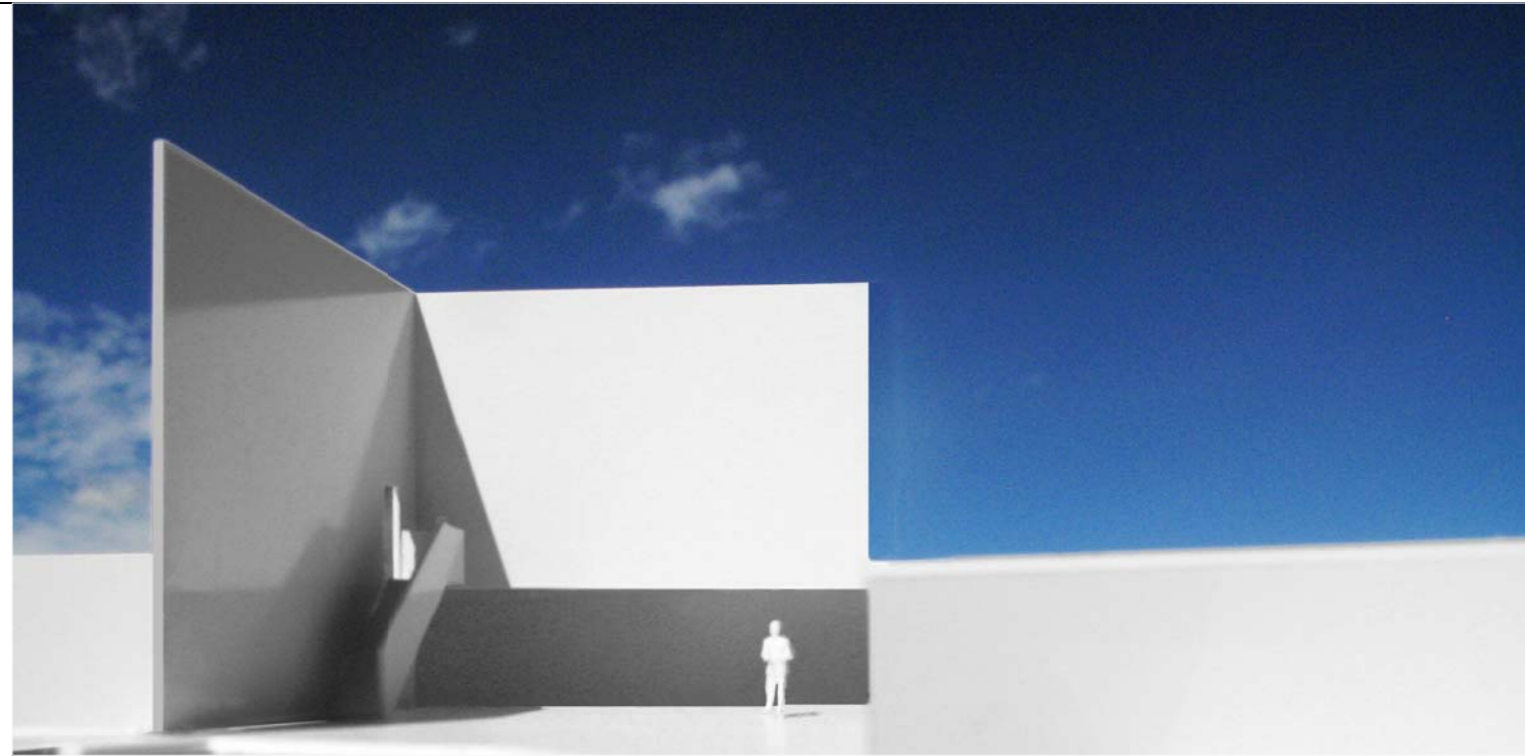
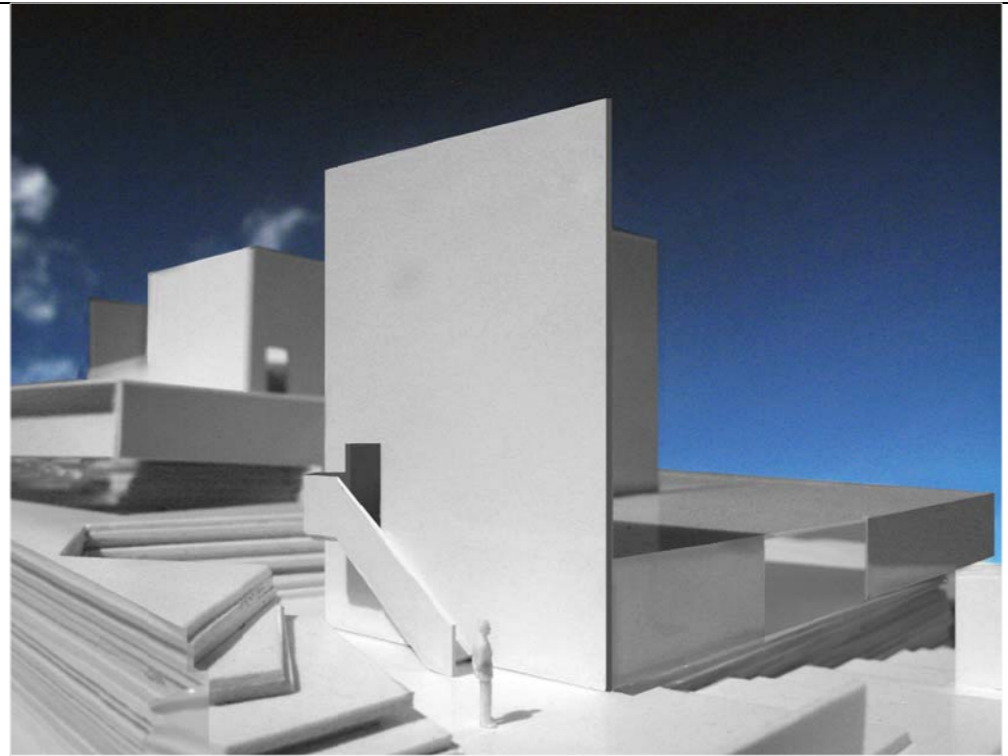
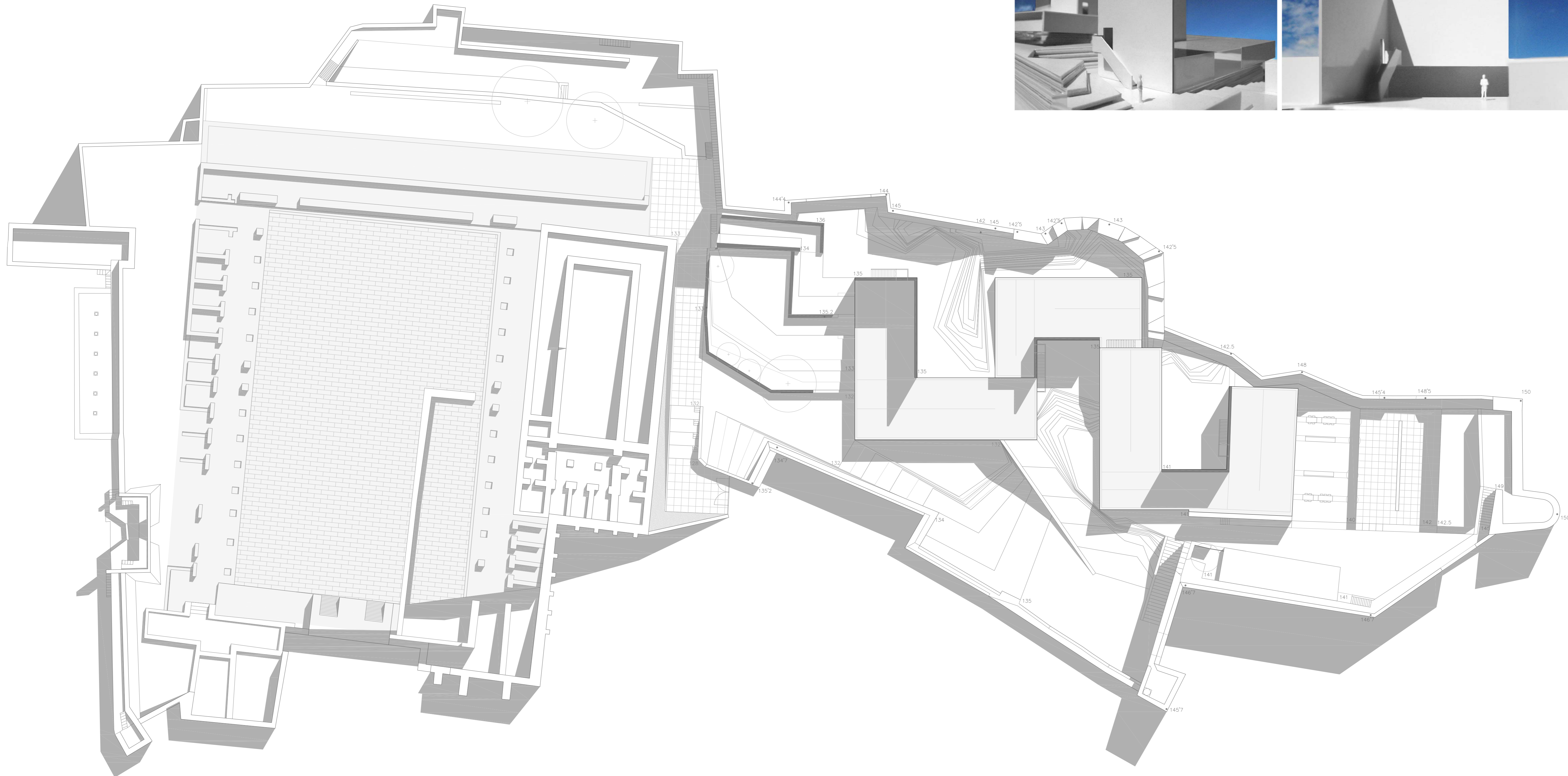
PLANO DE APROXIMACIÓN
ESC 1:15000

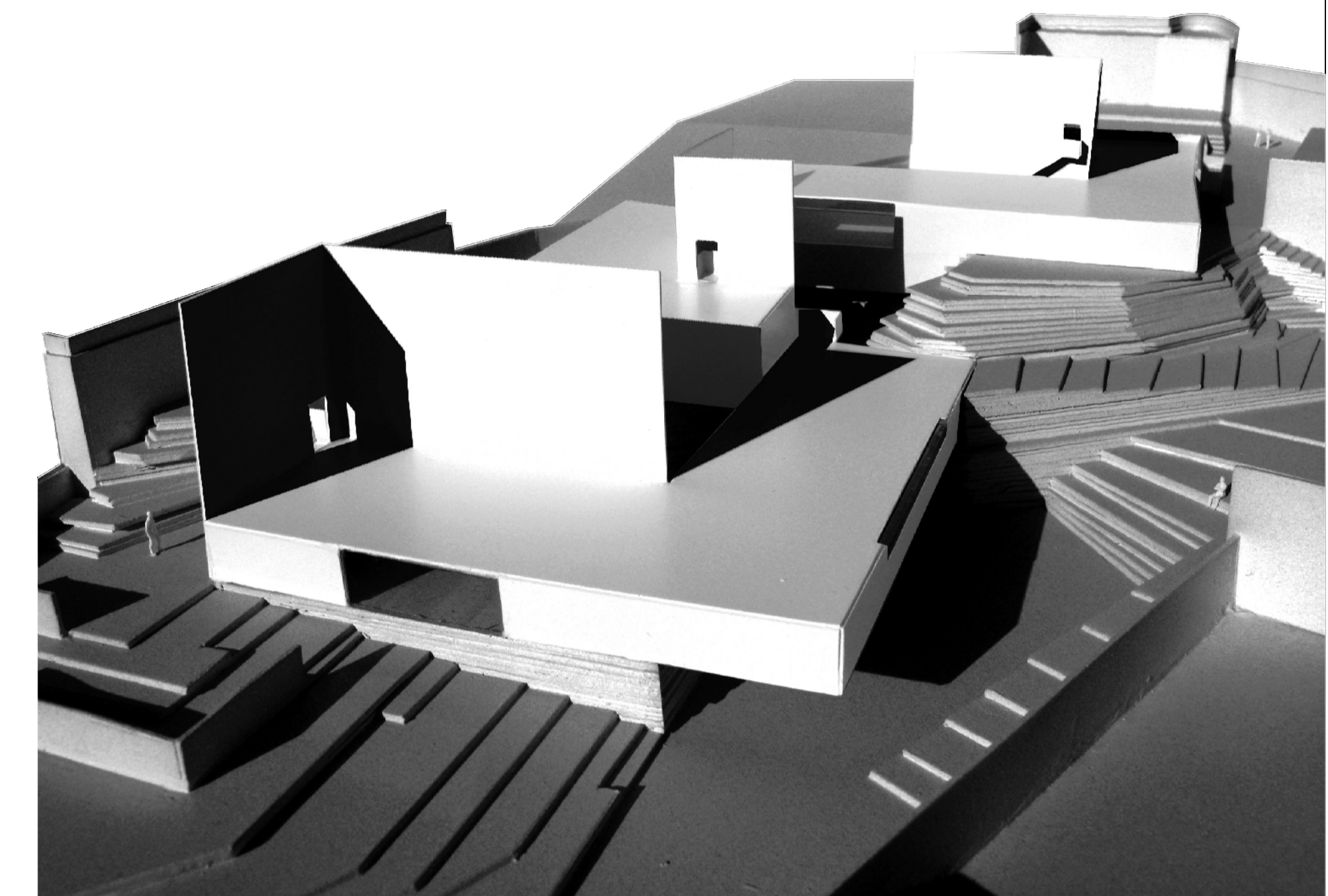
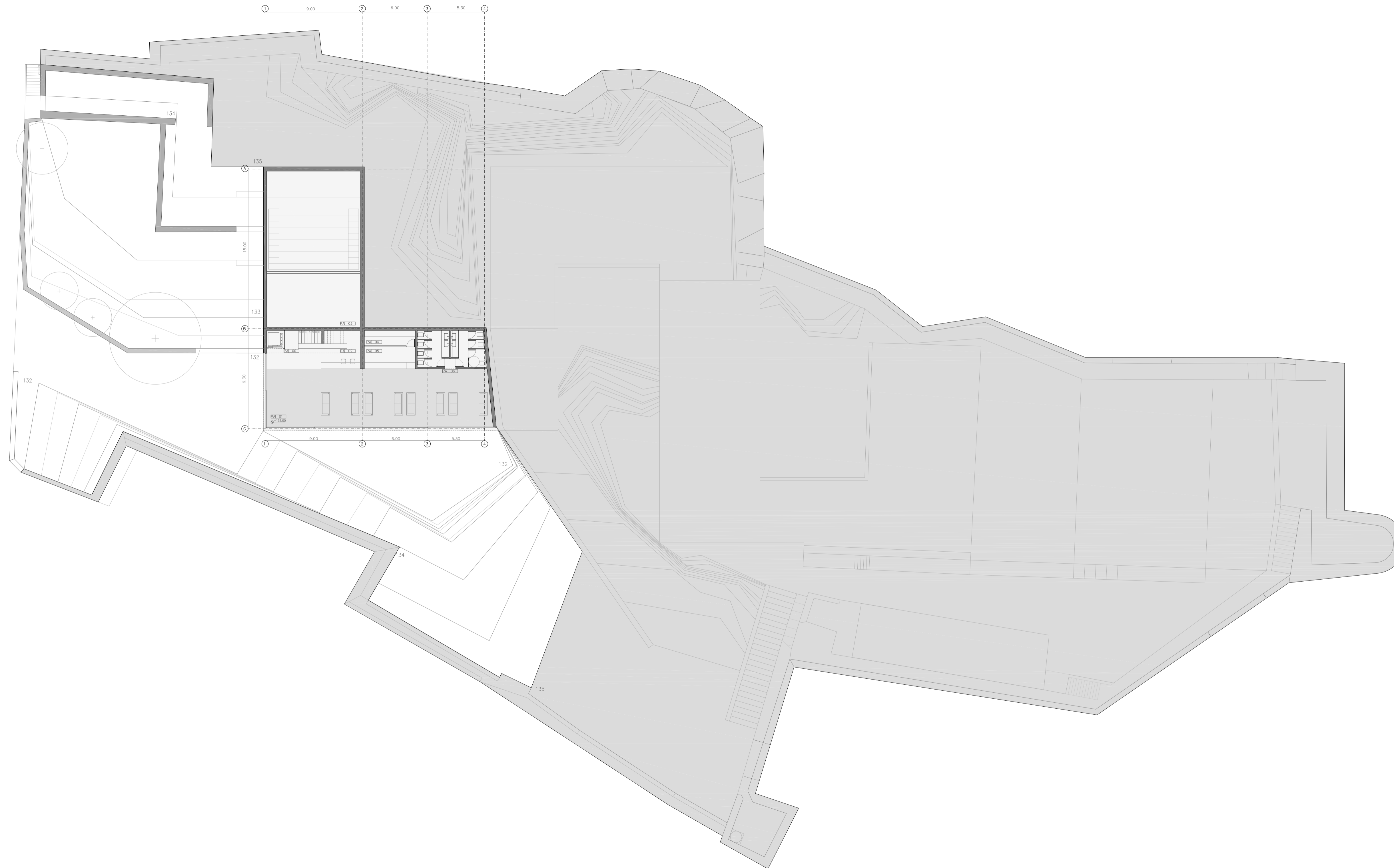


PLANTA DE SITUACIÓN
ESC 1:2500



ALZADO NORTE





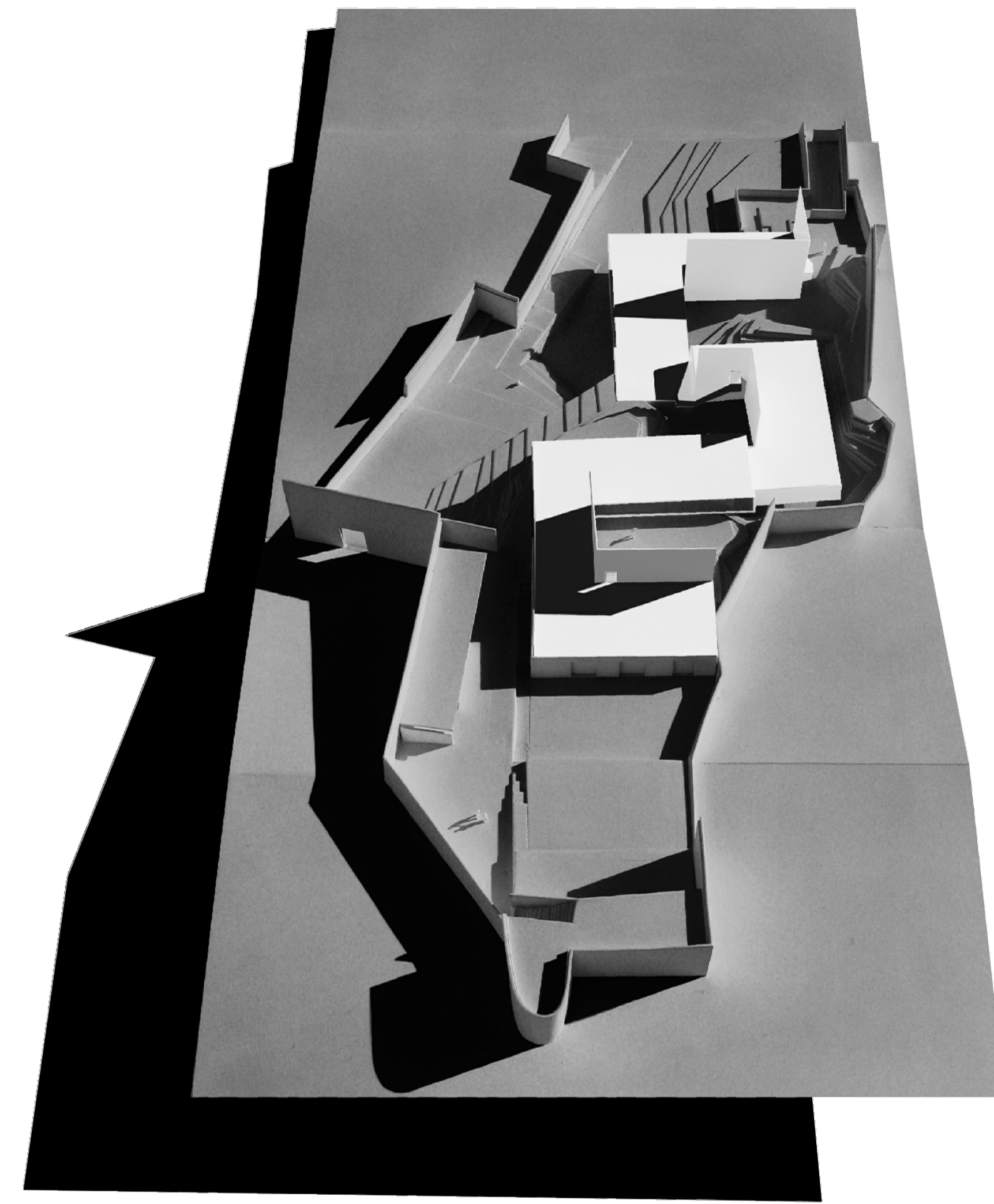
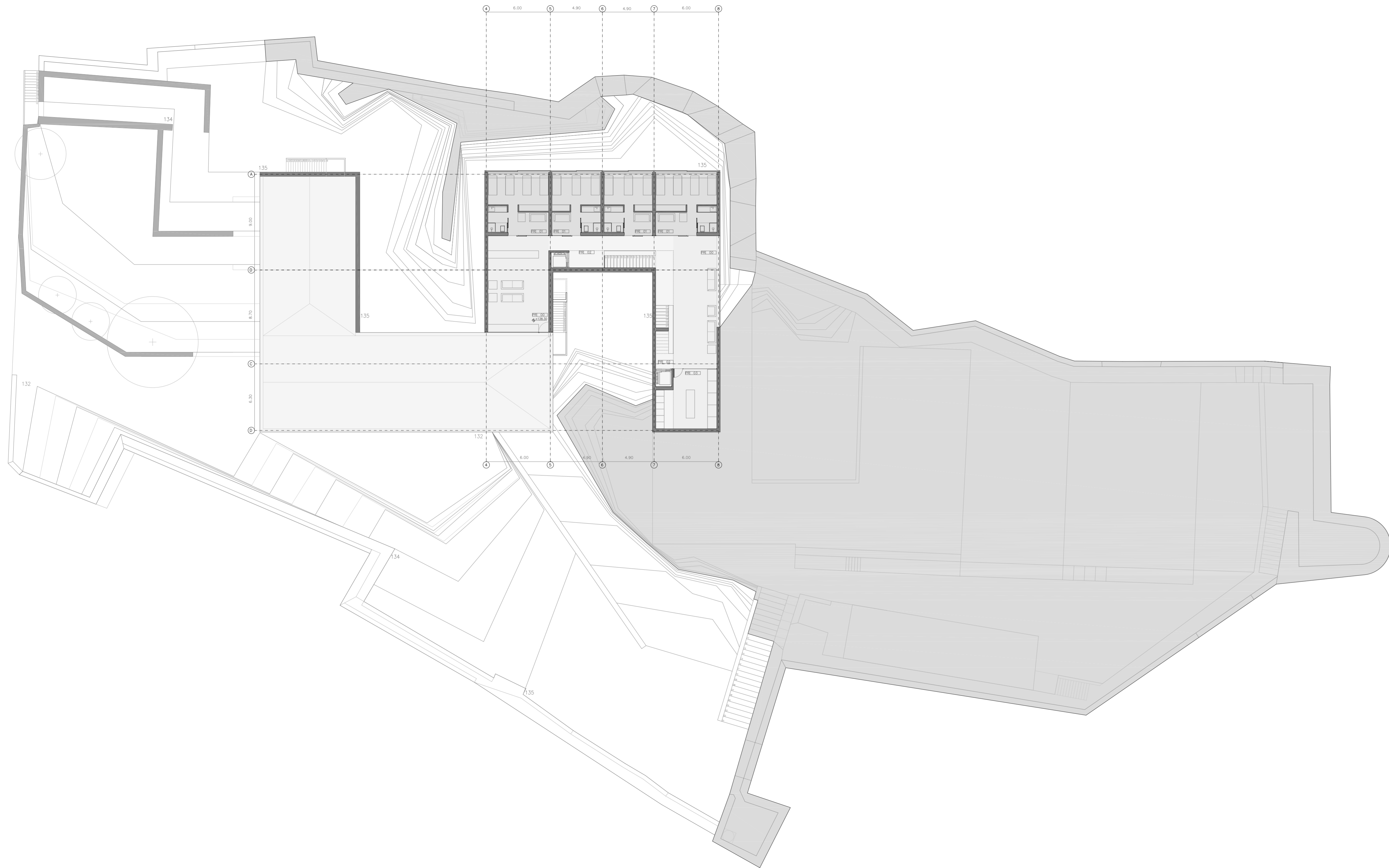
PLANTA DE ACCESO 221,31 m²
 COTA +132,00 ESC 1:200

PA.00	COMUNICACIÓN VERTICAL	15,47m ²
PA.01	FOYER	56,10m ²
PA.02	RECEPCIÓN	6,87m ²
PA.03	INSTALACIONES	43,21m ²
PA.04	ALMACÉN	6,75m ²
PA.05	CAFETERIA	72,34m ²
PA.06	BAÑOS PÚBLICOS	20,57m ²

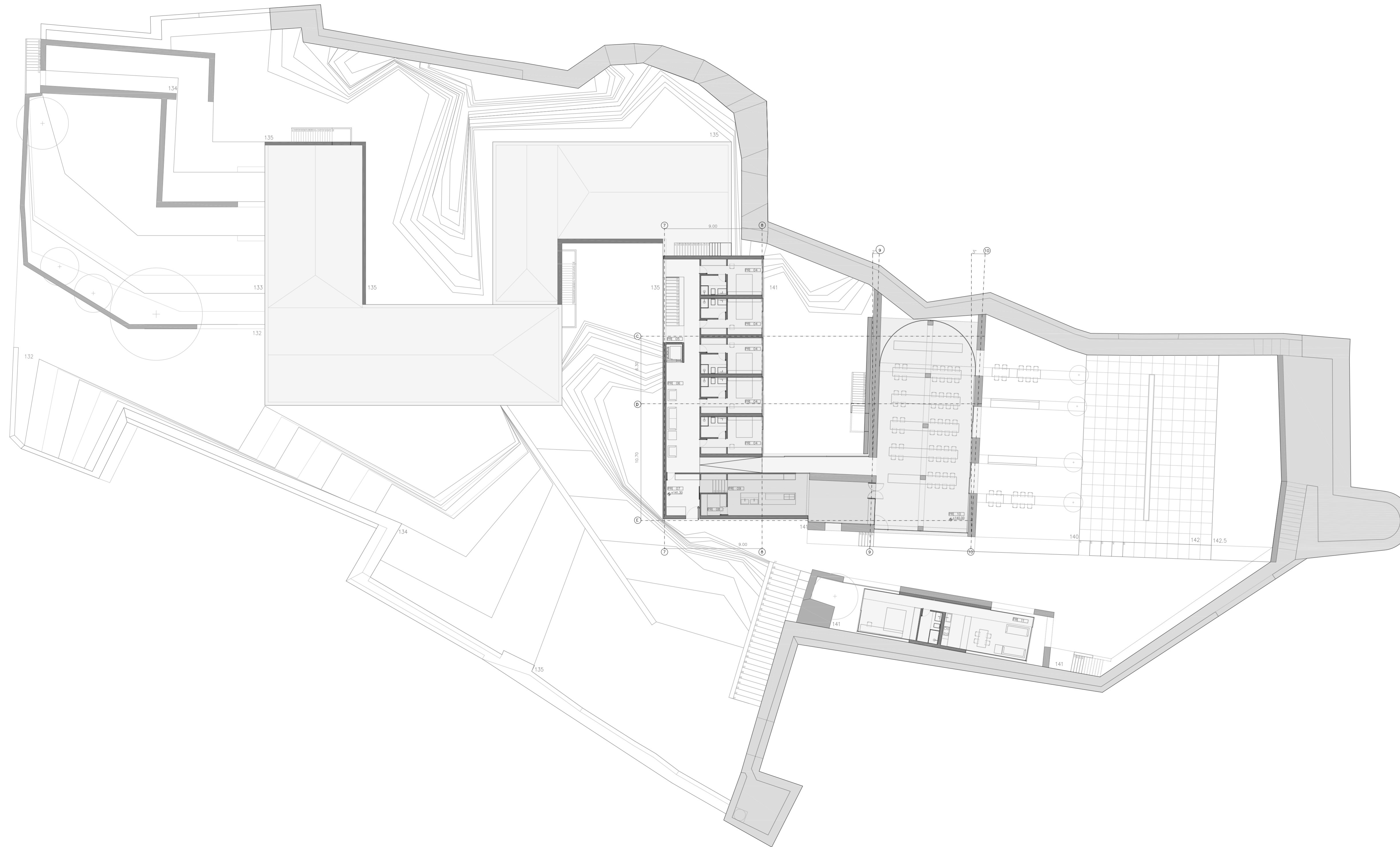


PLANTA DE ESTUDIO 482.47 m²
 COTA +135.30 ESC 1:200

PE.00	— SALA DE CONFERENCIAS	121.38m ²
PE.01	— SALA DE GRABACIÓN	5.95m ²
PE.02	— COMUNICACIÓN VERTICAL	32.19m ²
PE.03	— MEETING POINT	63.30m ²
PE.04	— SALAS DE ESTUDIO	69.95m ²
PE.05	— ARCHIVO	34.68m ²
PE.06	— ZONAS COMÚNES	23.70m ²
PE.07	— BAÑOS PÚBLICOS	23.14m ²
PE.08	— HABITACIONES TI	92.57m ²
PE.09	— VESTUARIOS	15.81m ²

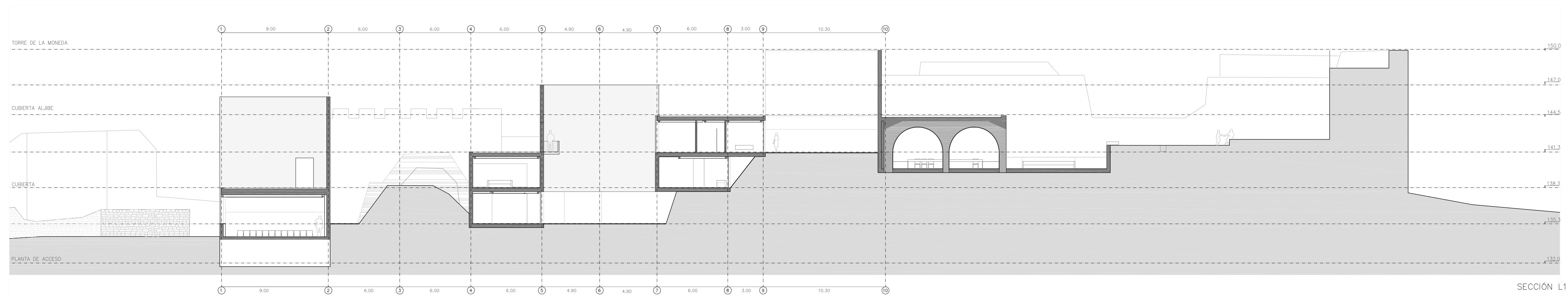
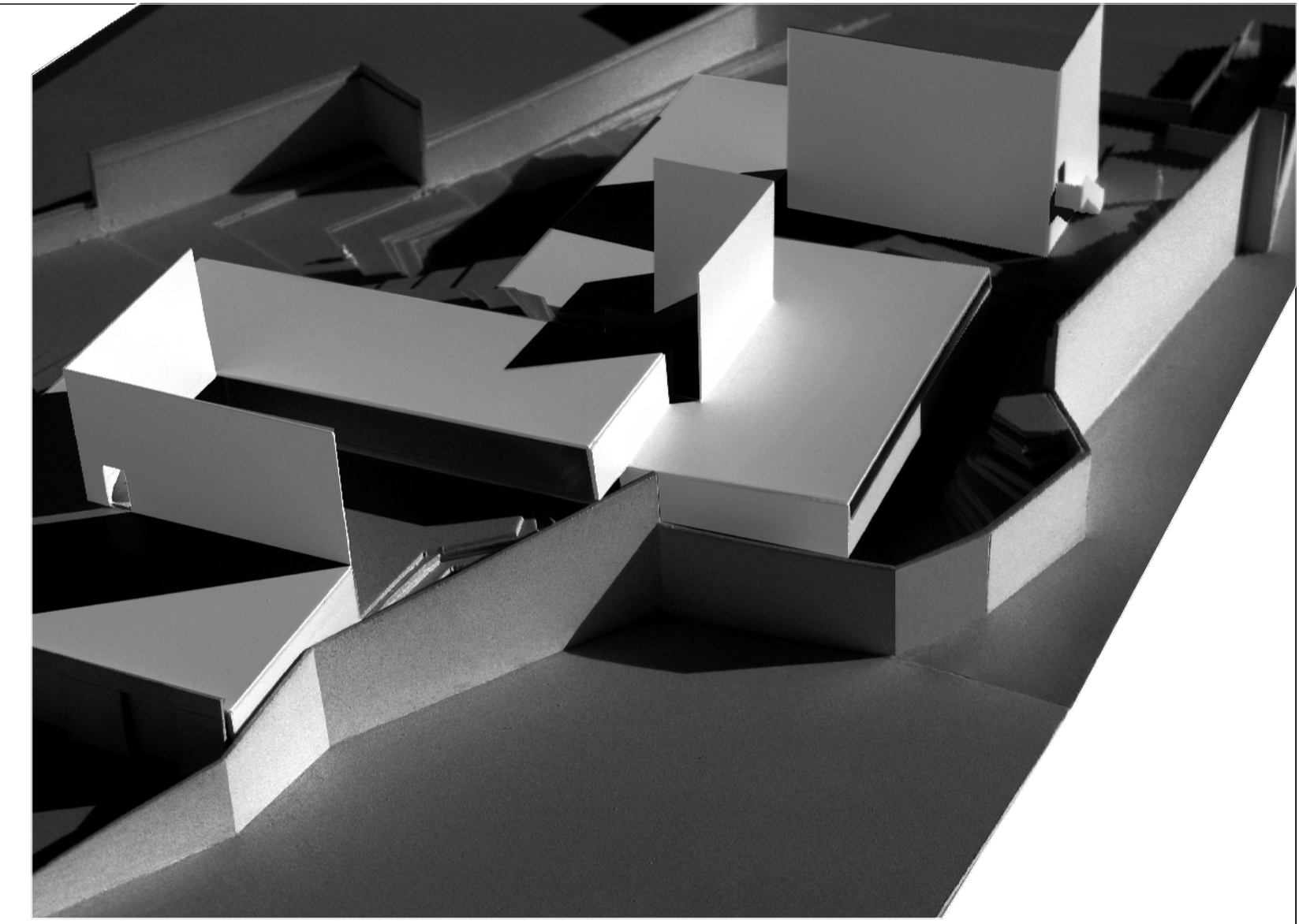


PLANTA RESIDENCIA	277.26	m ²
COTA +138.30m	ESC	1:200
PR.00 — ZONAS COMUNES	100.91	m ²
PR.01 — HABITACIONES MÚLTIPLE	111.10	m ²
PR.02 — COMUNICACIÓN VERTICAL	36.63	m ²
PR.03 — LAVANDERÍA	28.62	m ²

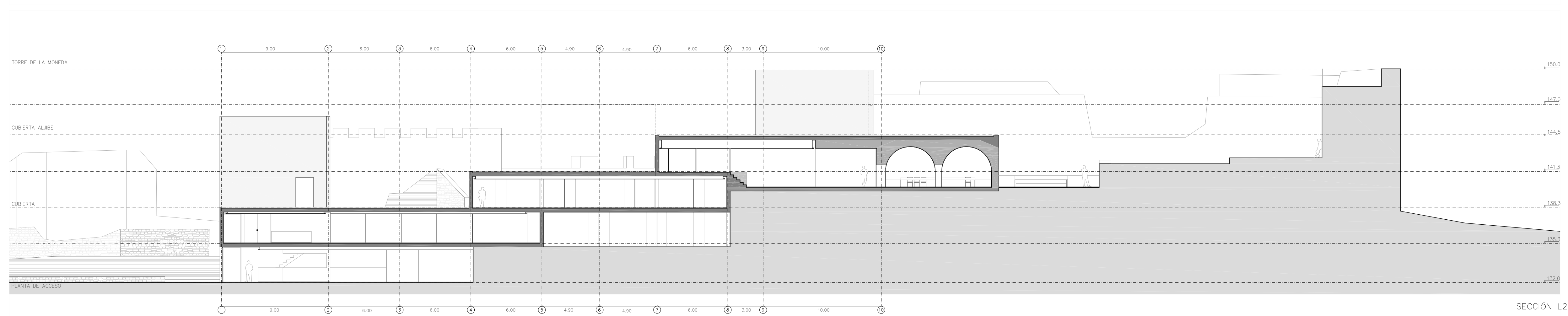


PLANTA RESIDENCIA 406.16 m²
 COTA +141.00m ESC 1:200

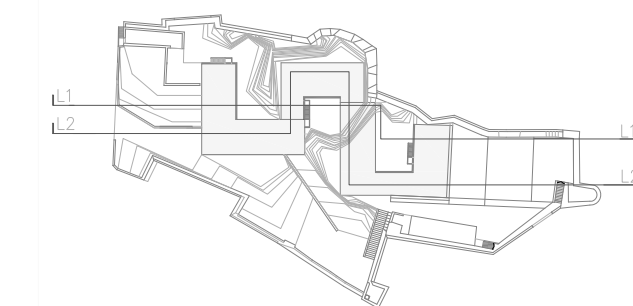
PR.04	HABITACIONES DOBLES	92.99m ²
PR.05	COMUNICACIÓN VERTIC.	13.12m ²
PR.06	ZONAS COMUNES	14.40m ²
PR.07	ZONA DE PERSONAL	11.91m ²
PR.08	ALMACÉN	4.92m ²
PR.09	COCINA-OFFICE	52.76m ²
PR.10	COMEDOR	155.81m ²
PR.11	VIVIENDA DE PERSONA	60.25m ²



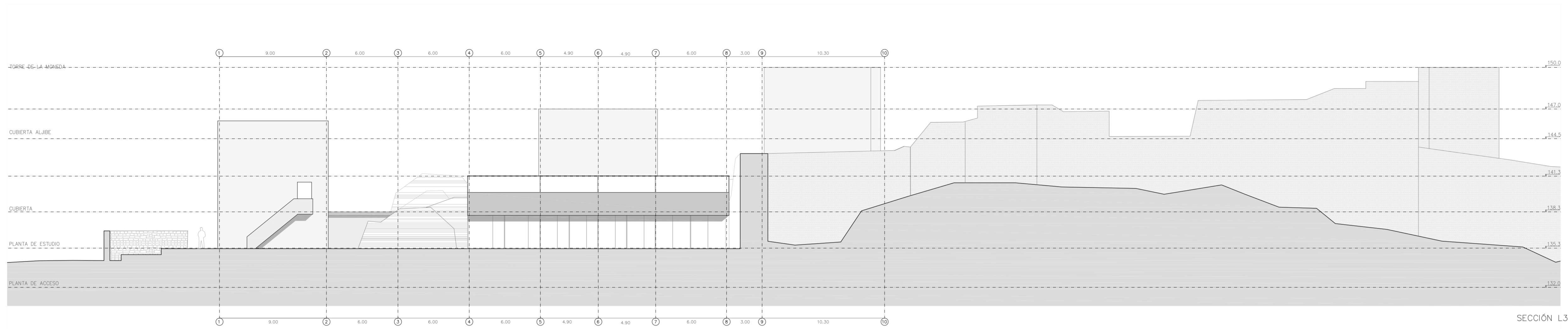
SECCIÓN L1



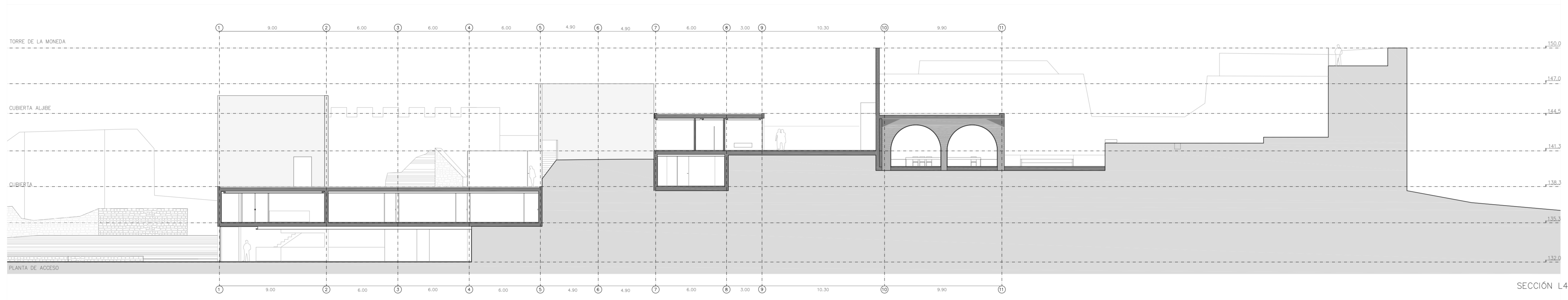
SECCIÓN L2



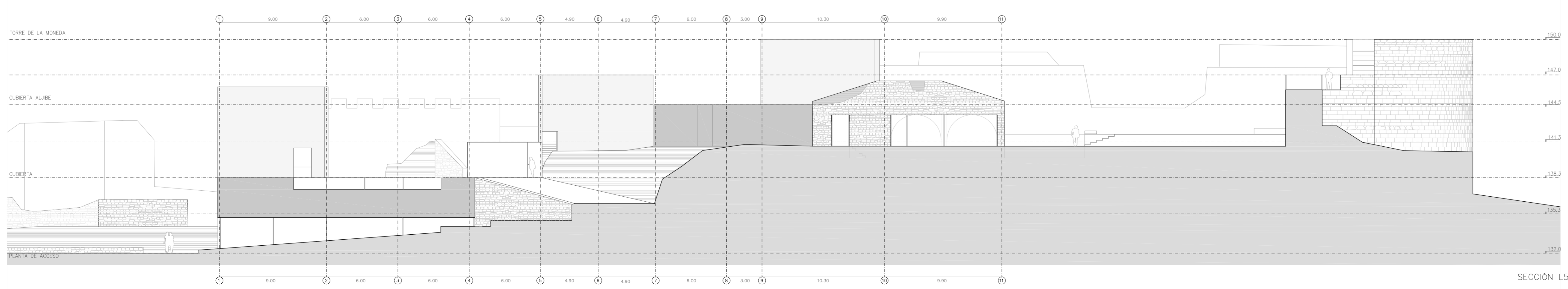
SECCIONES LONGITUDINALES
ESC. 1:200



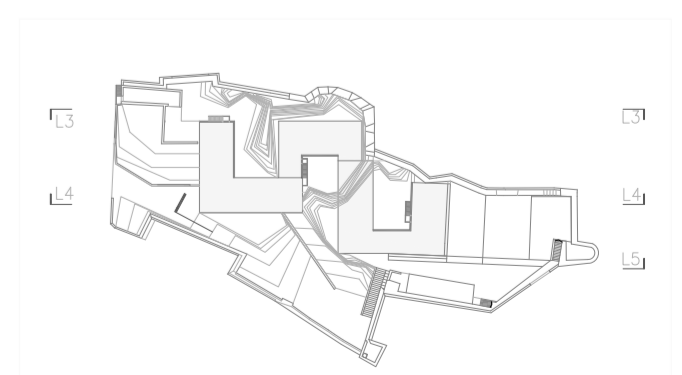
SECCIÓN L3

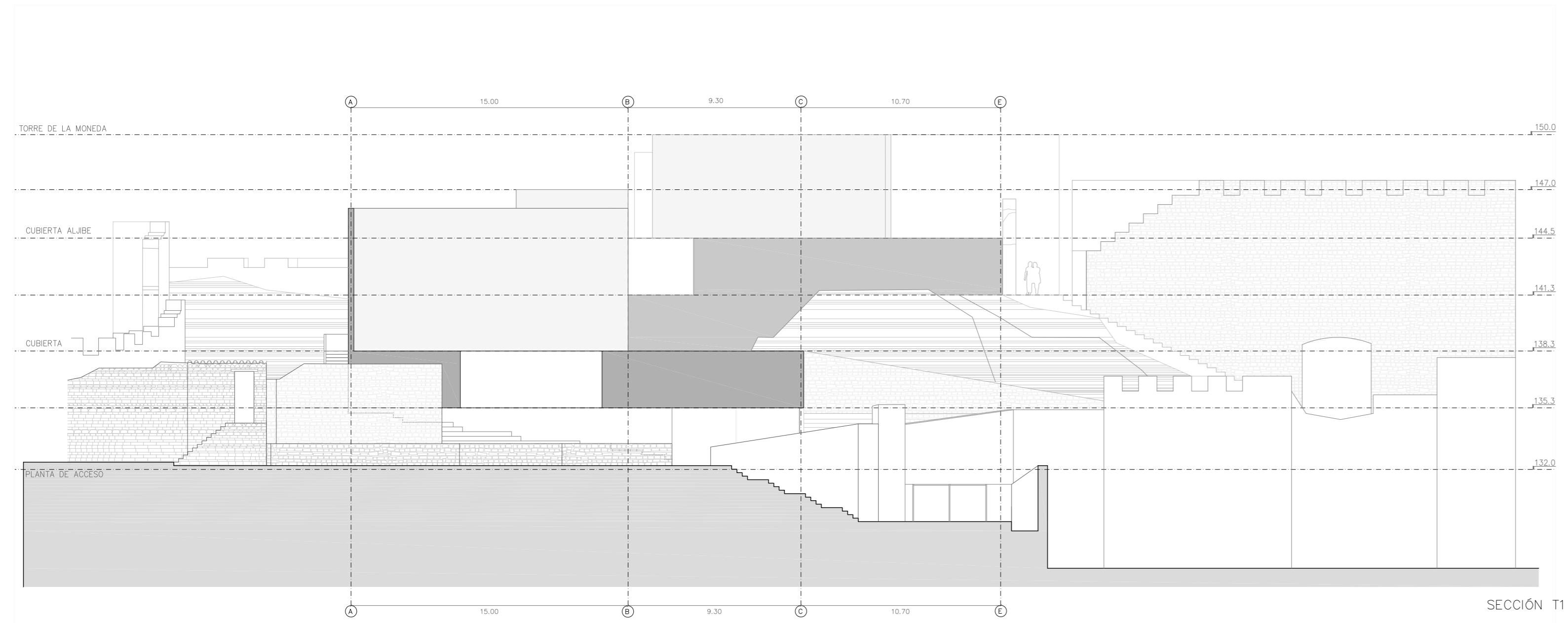


SECCIÓN L4

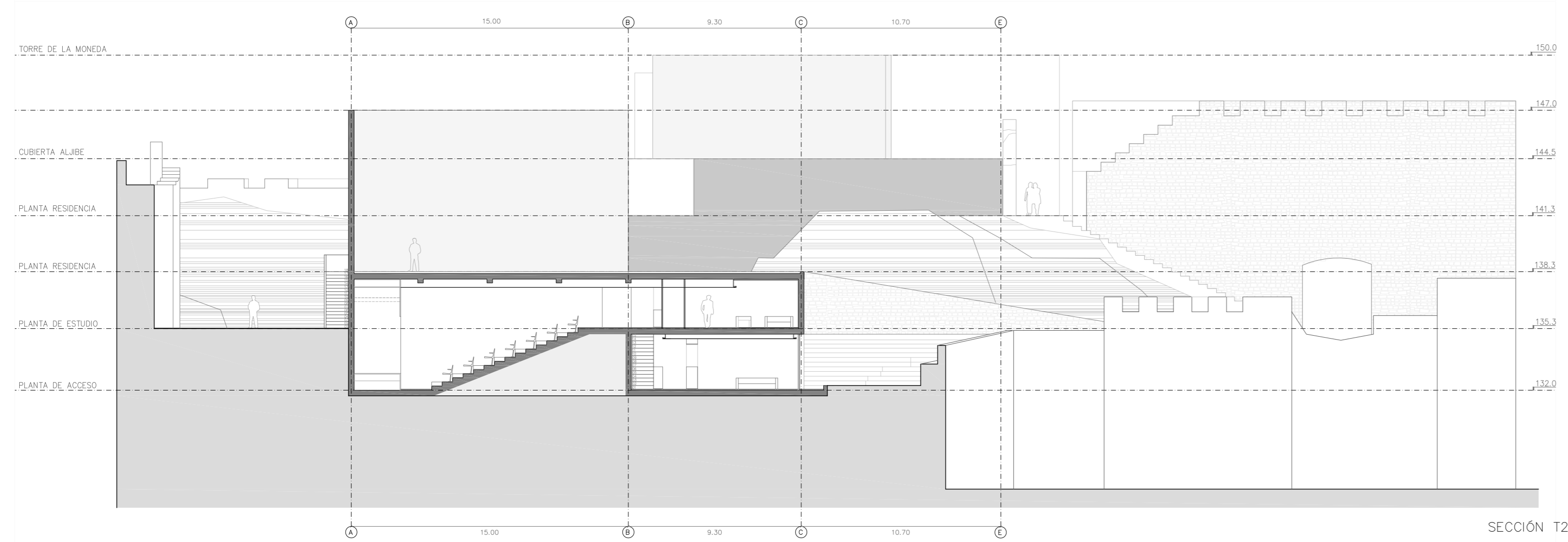


SECCIÓN L5

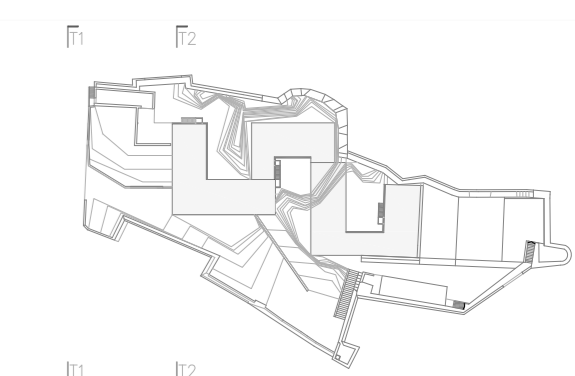
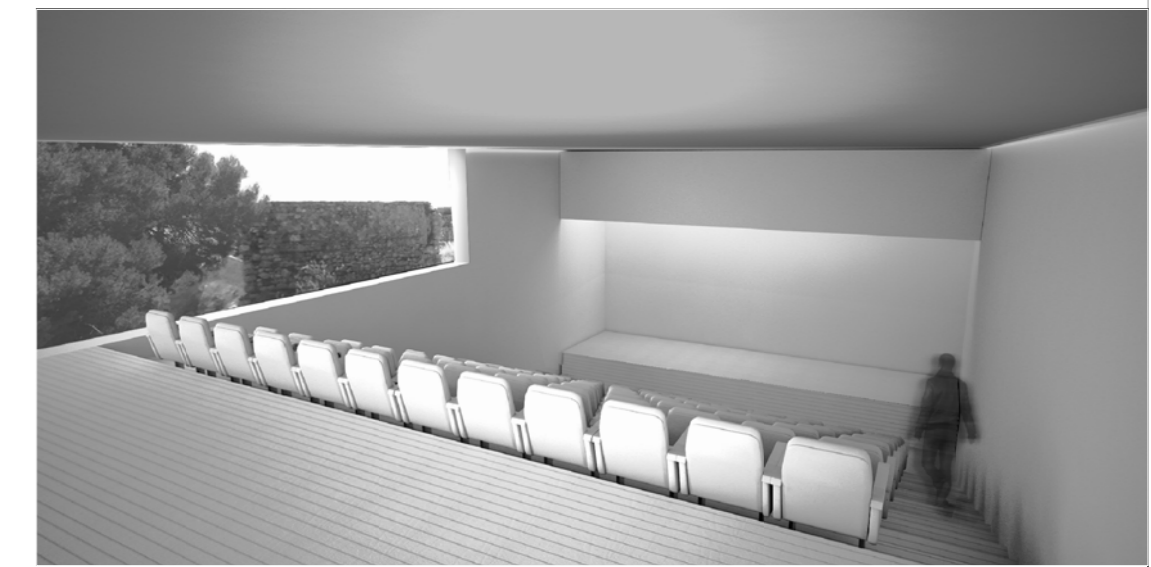




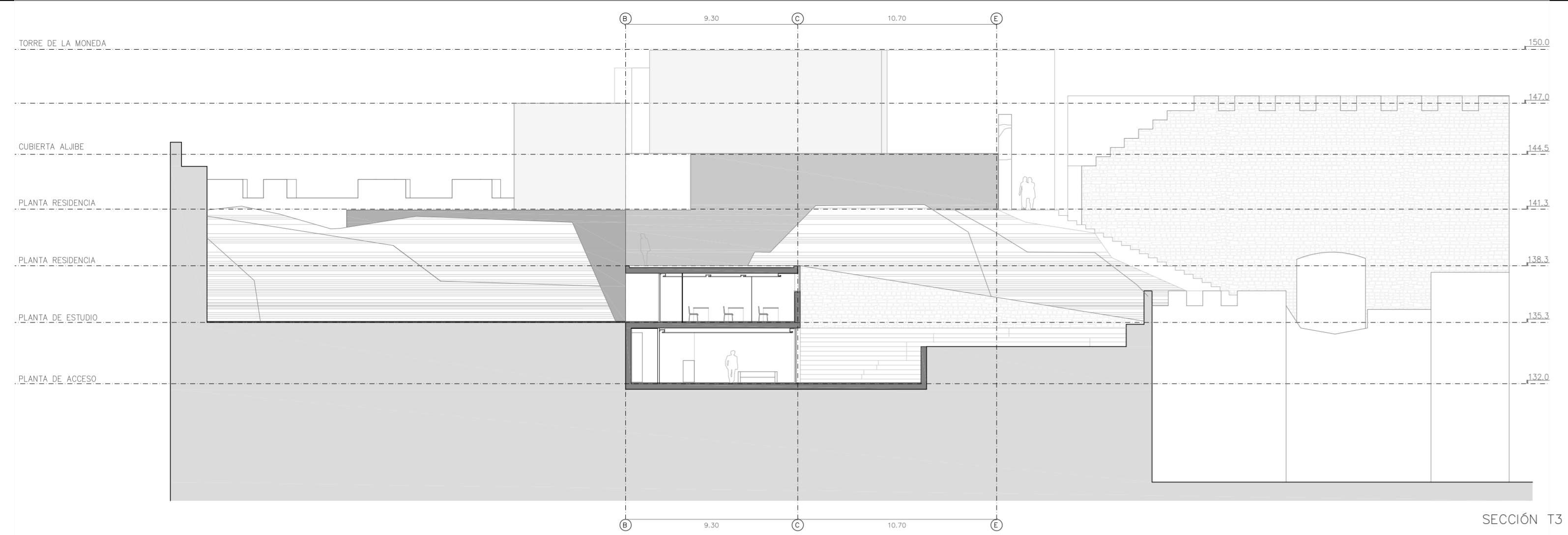
SECCIÓN T1



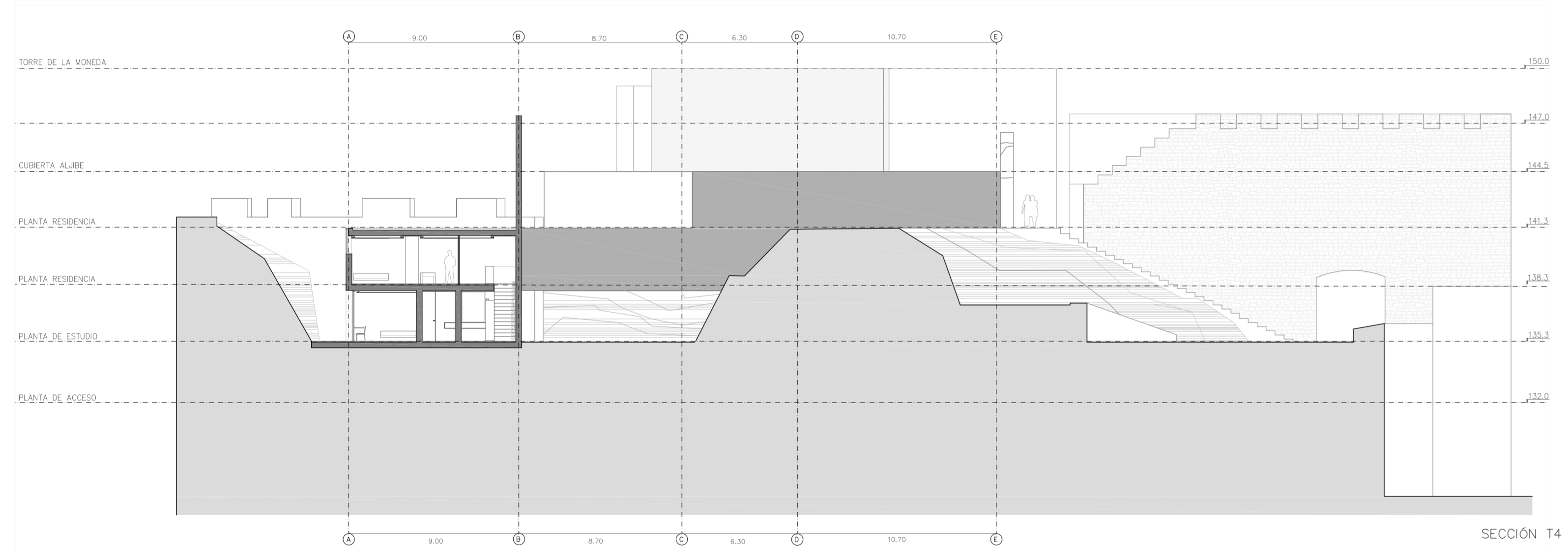
SECCIÓN T2



SECCIONES TRANSVERSALES
ESC. 1:200



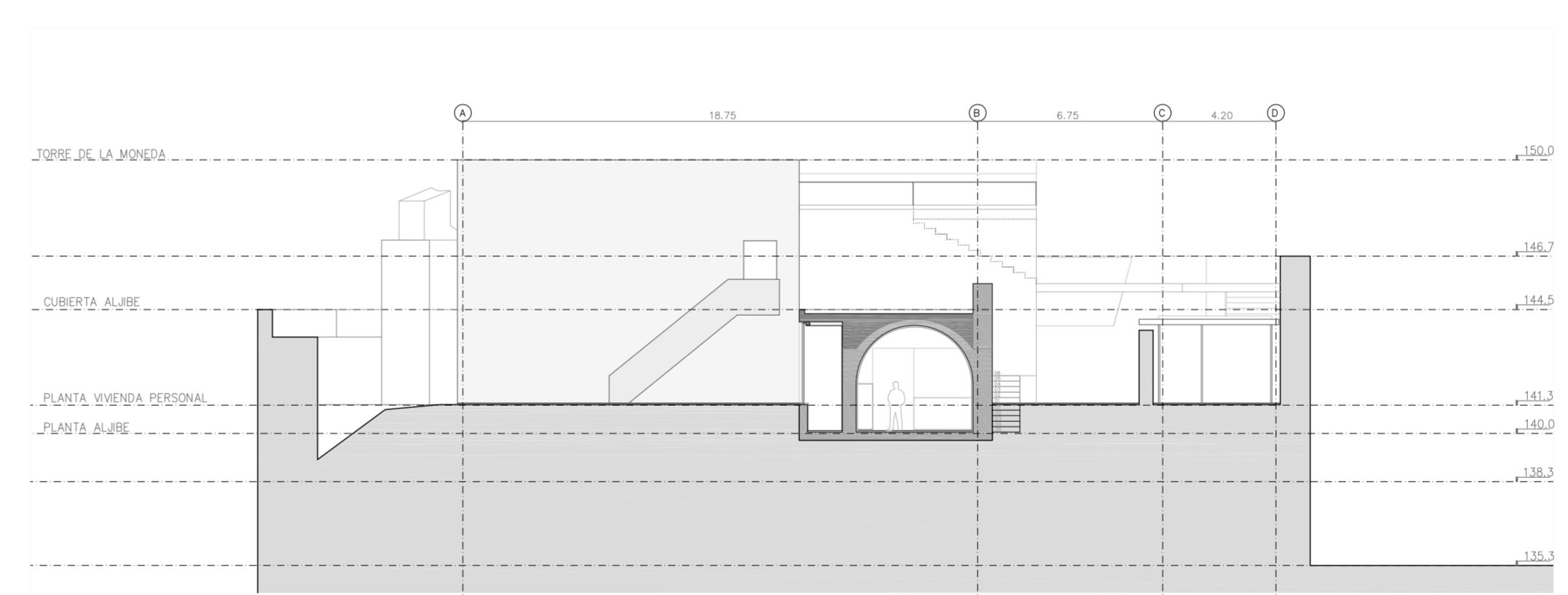
SECCIÓN T3



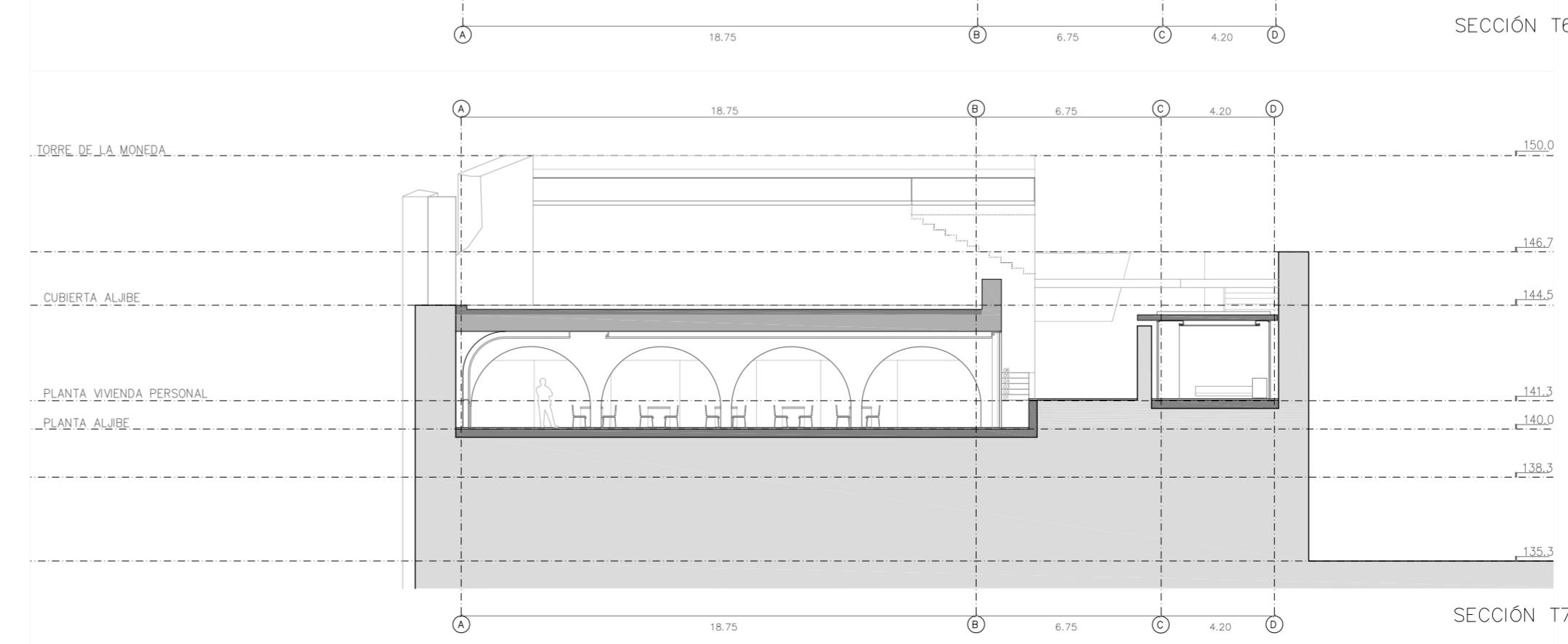
SECCIÓN T4



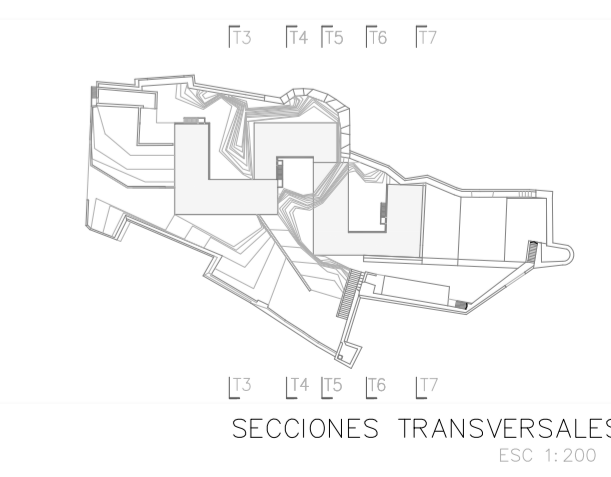
SECCIÓN T5

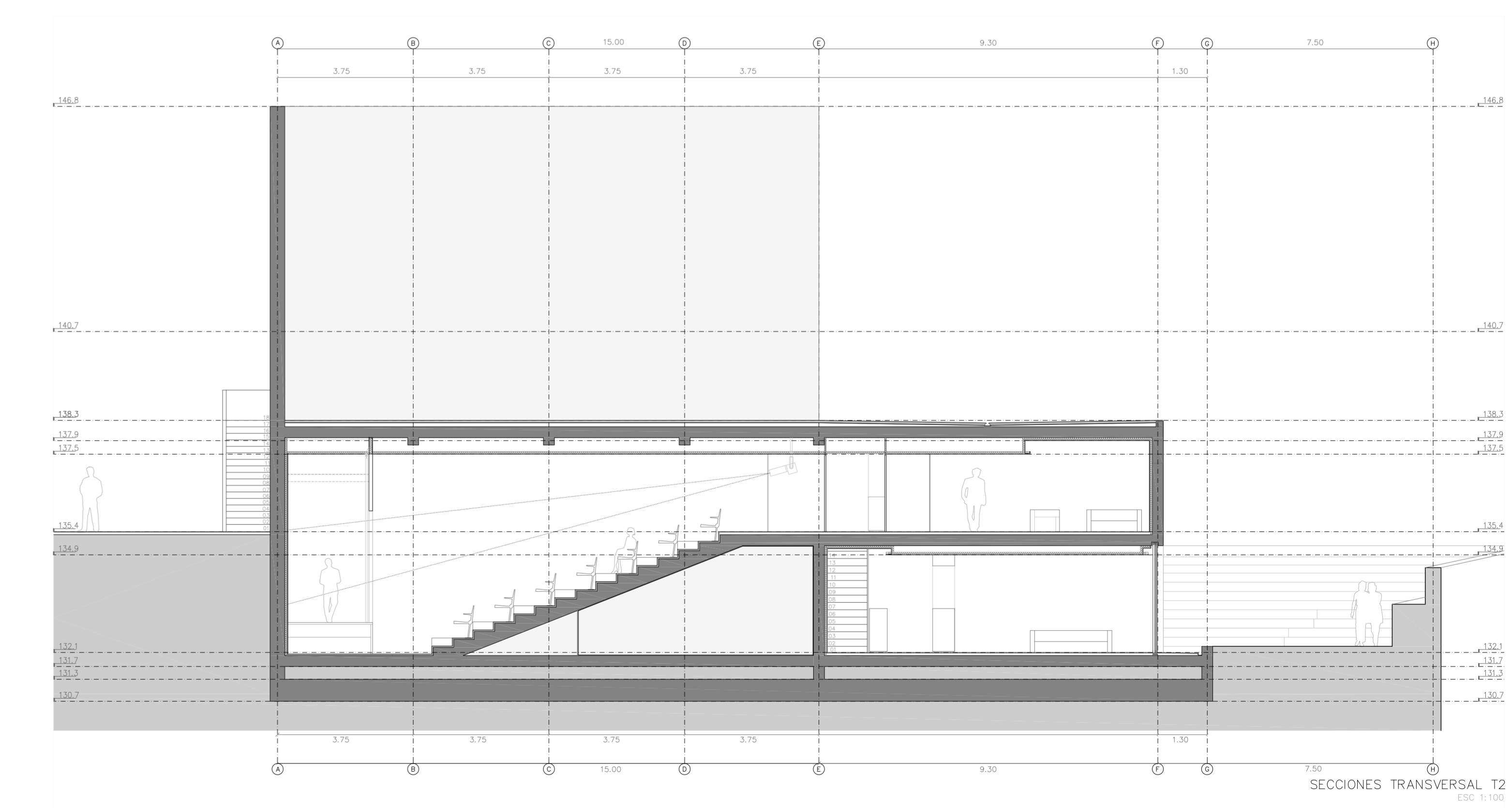
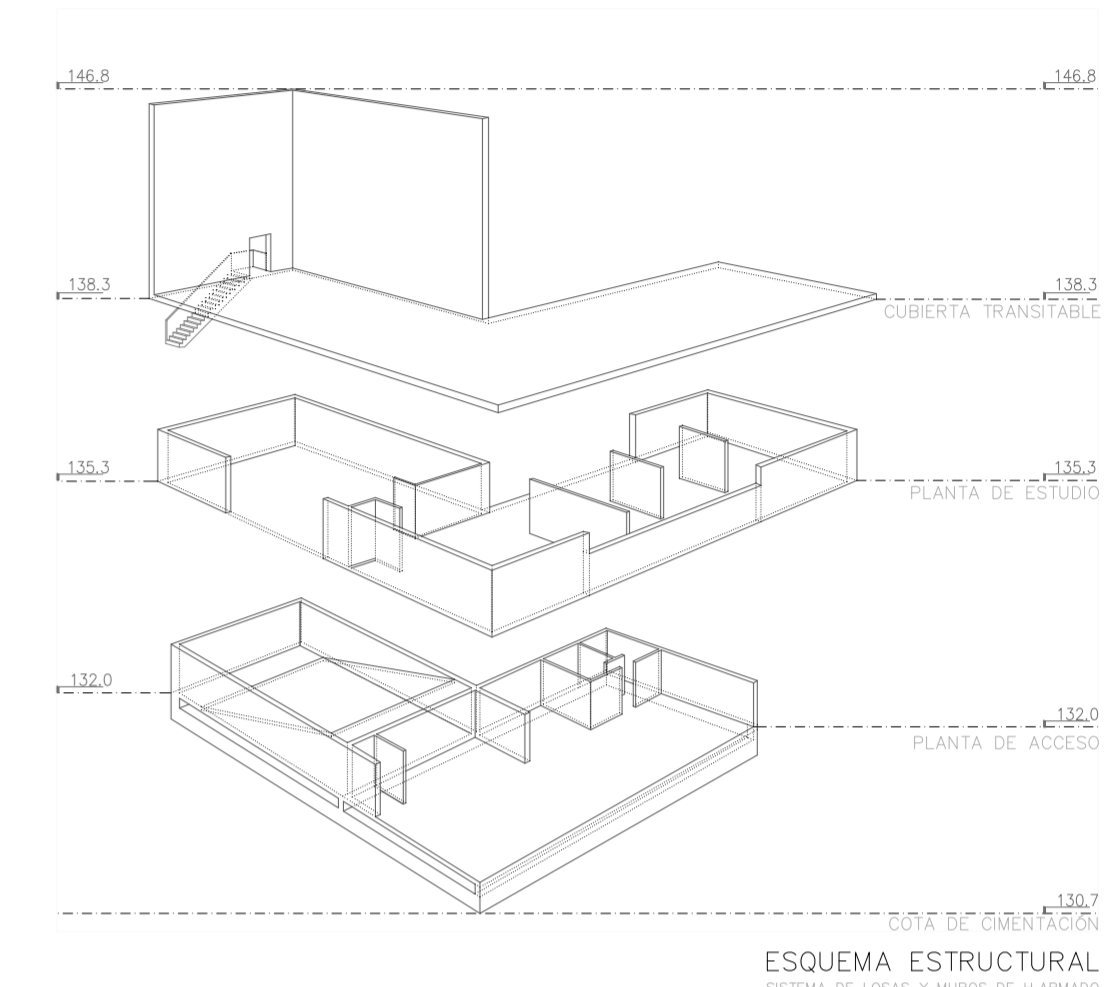


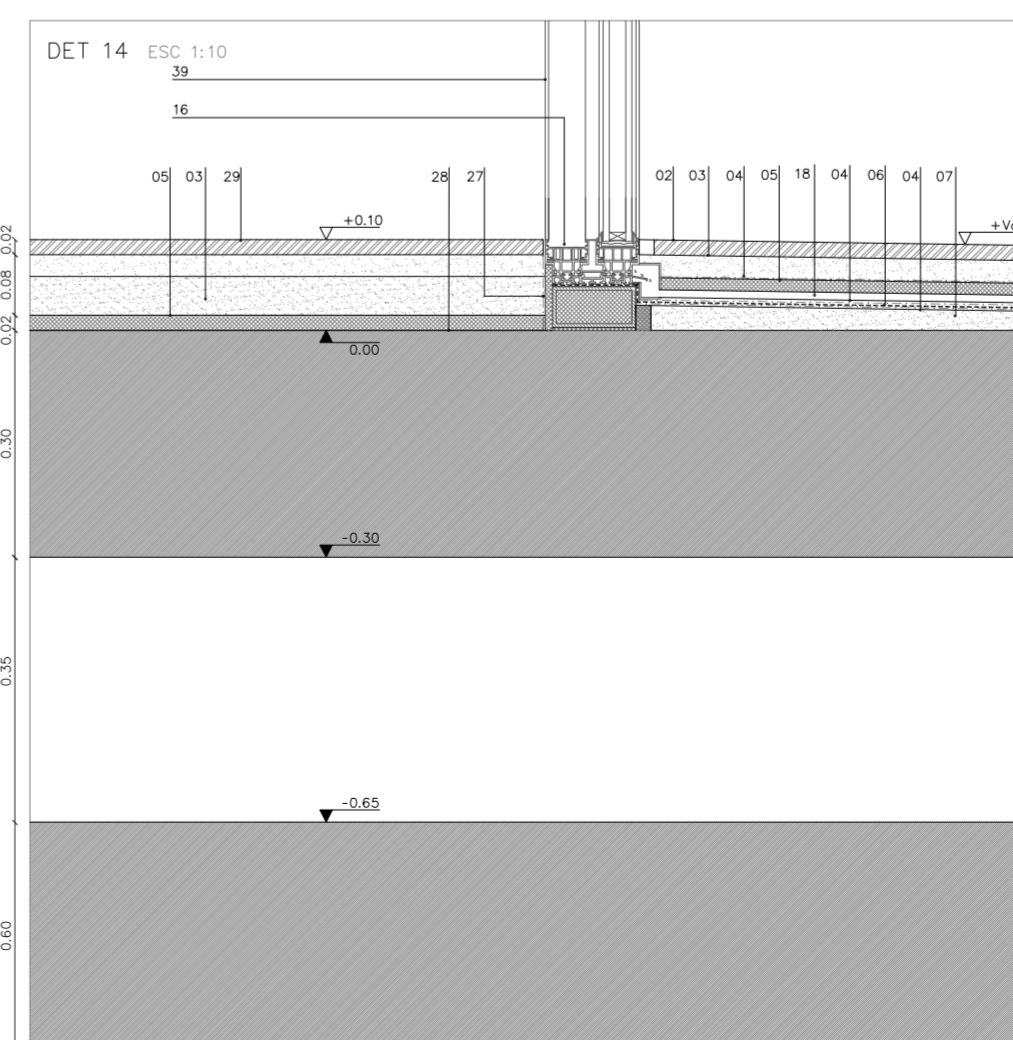
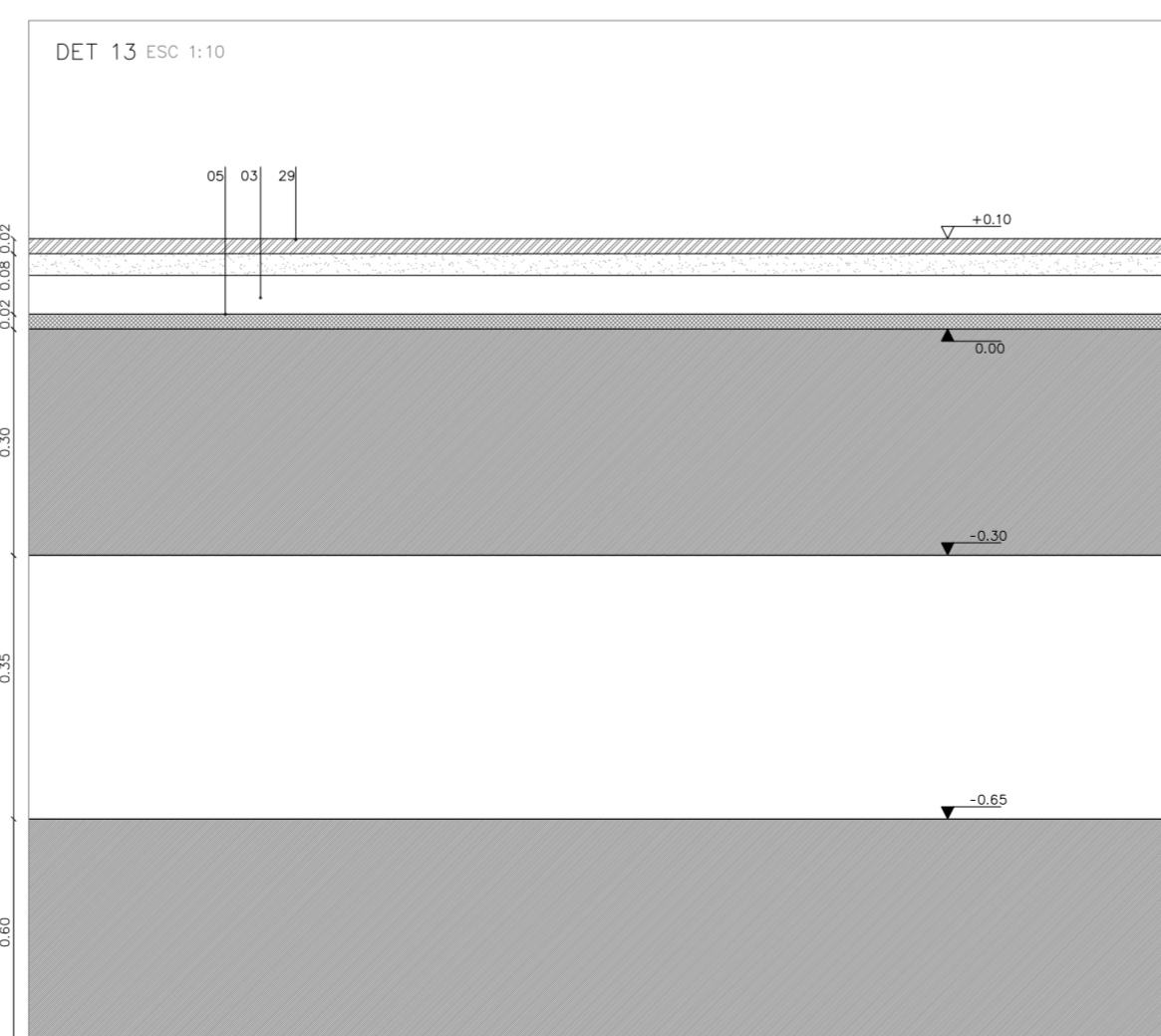
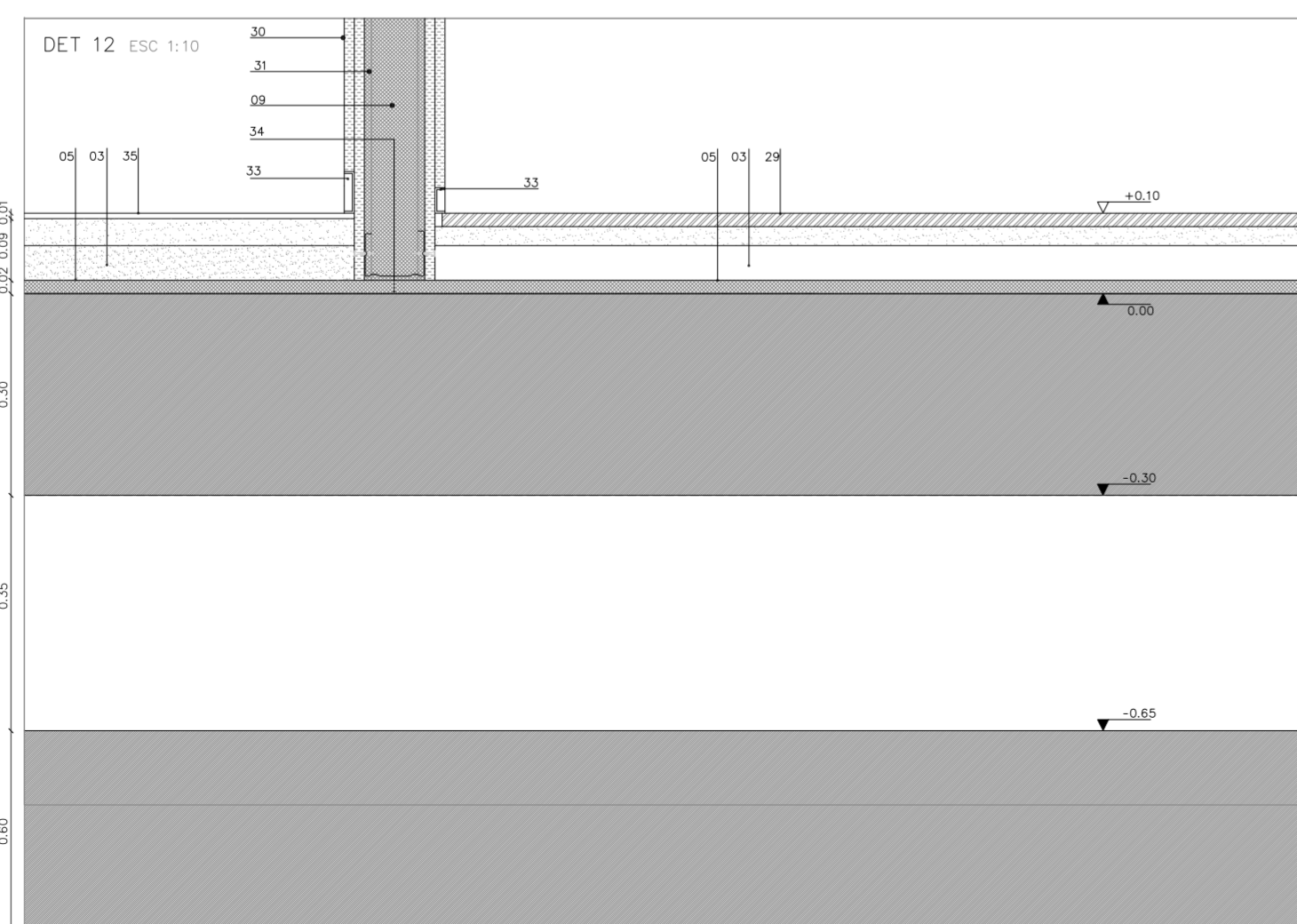
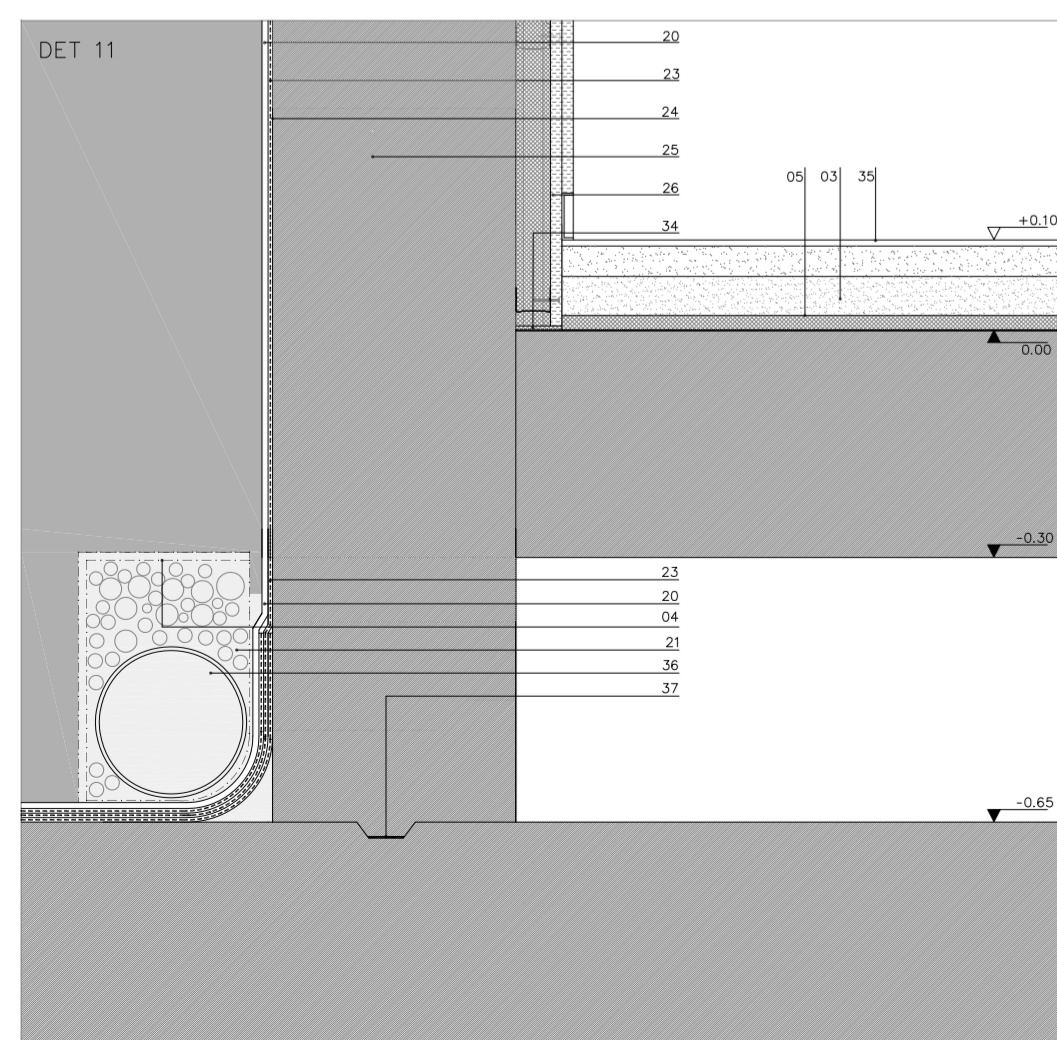
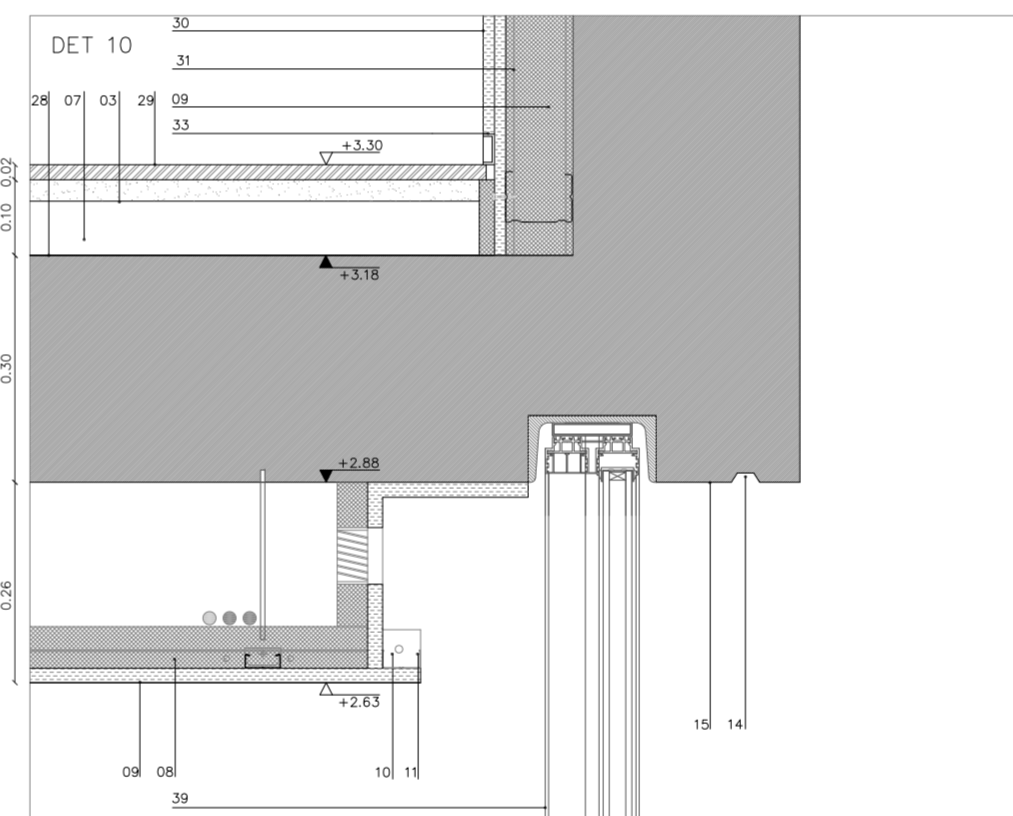
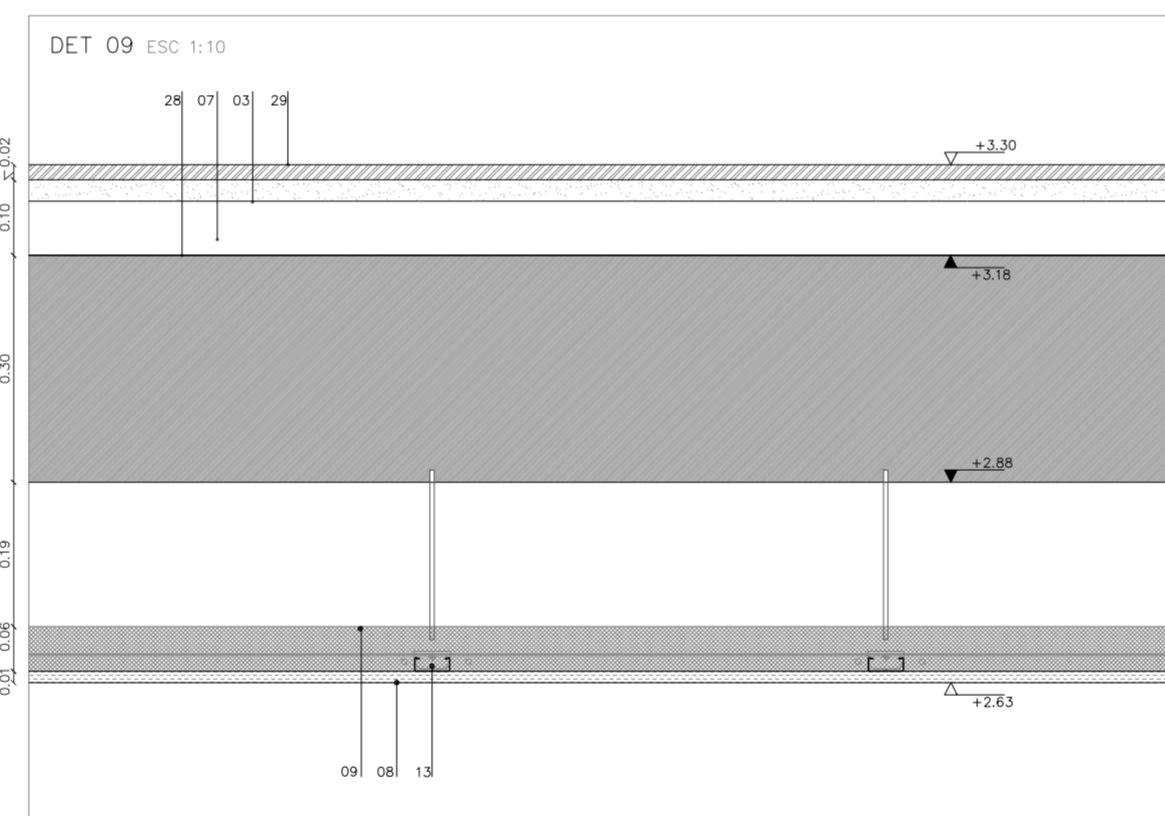
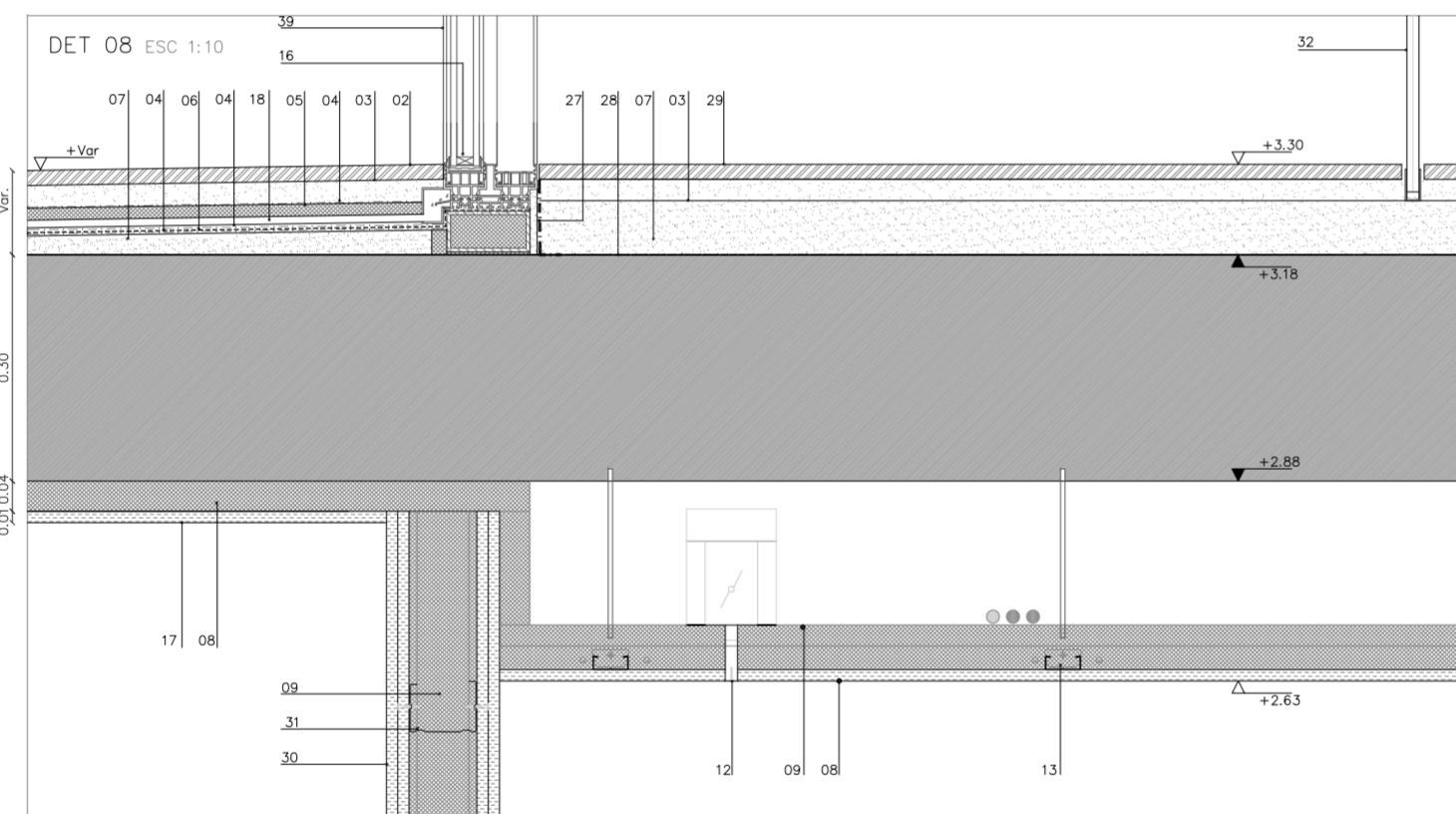
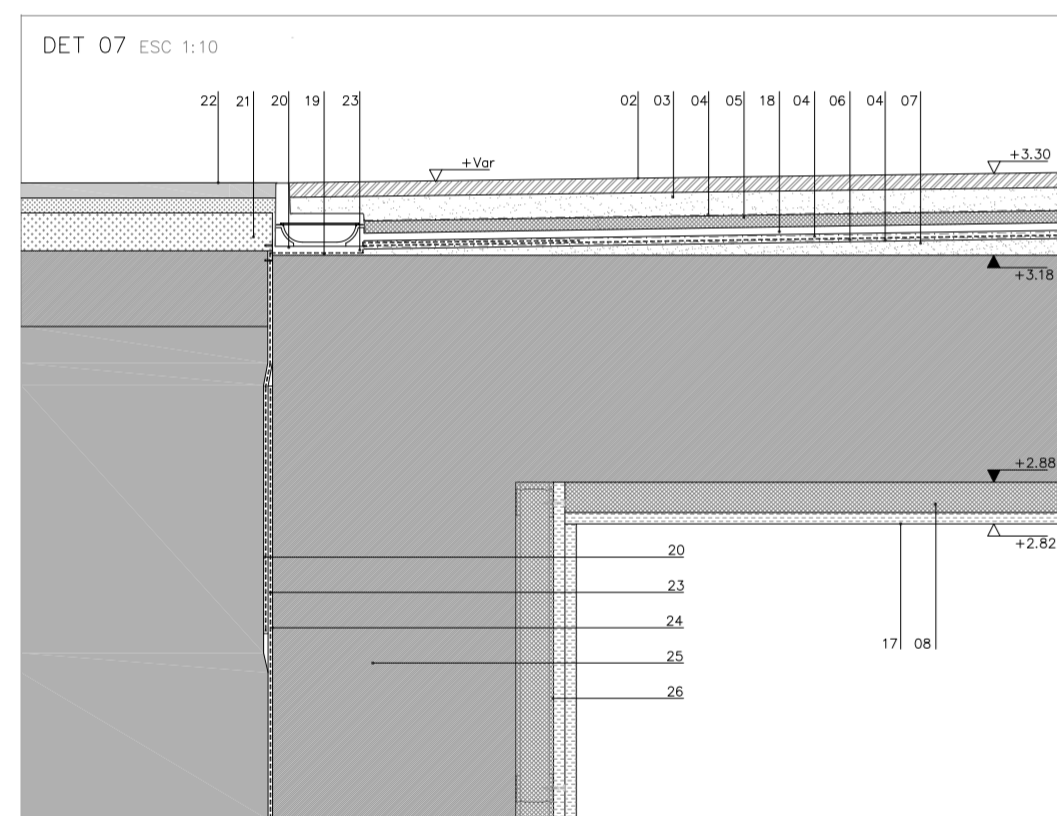
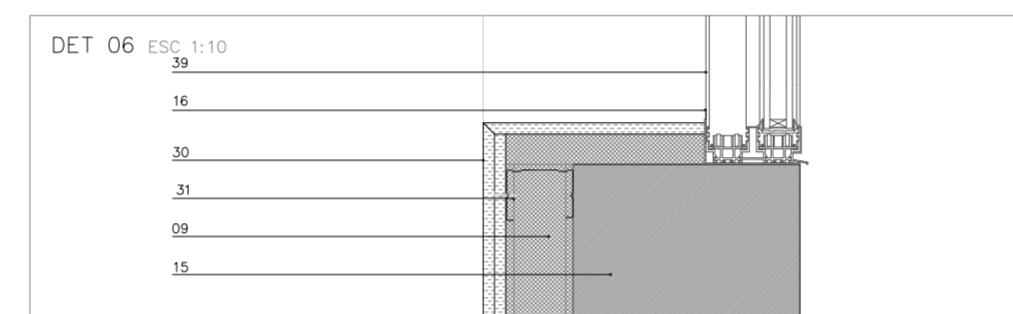
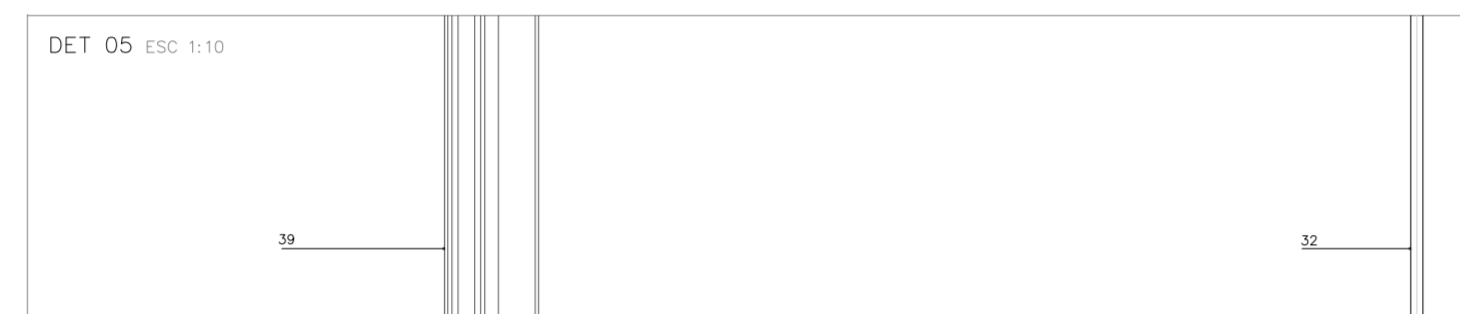
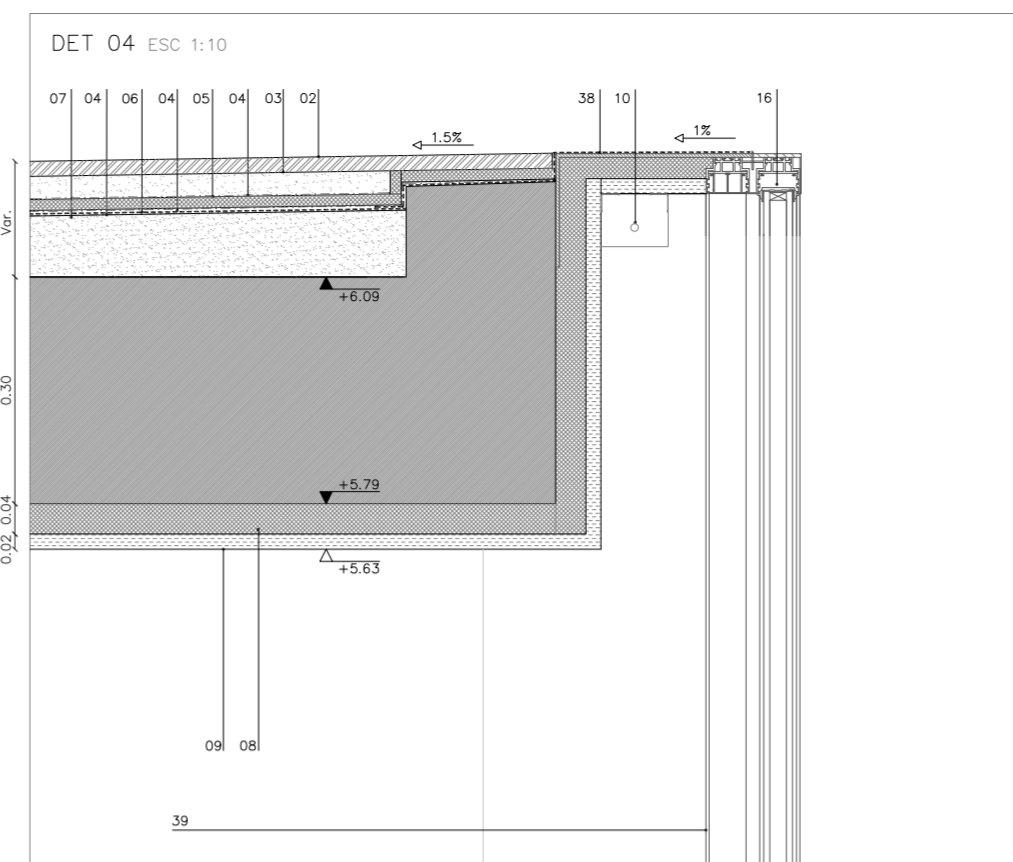
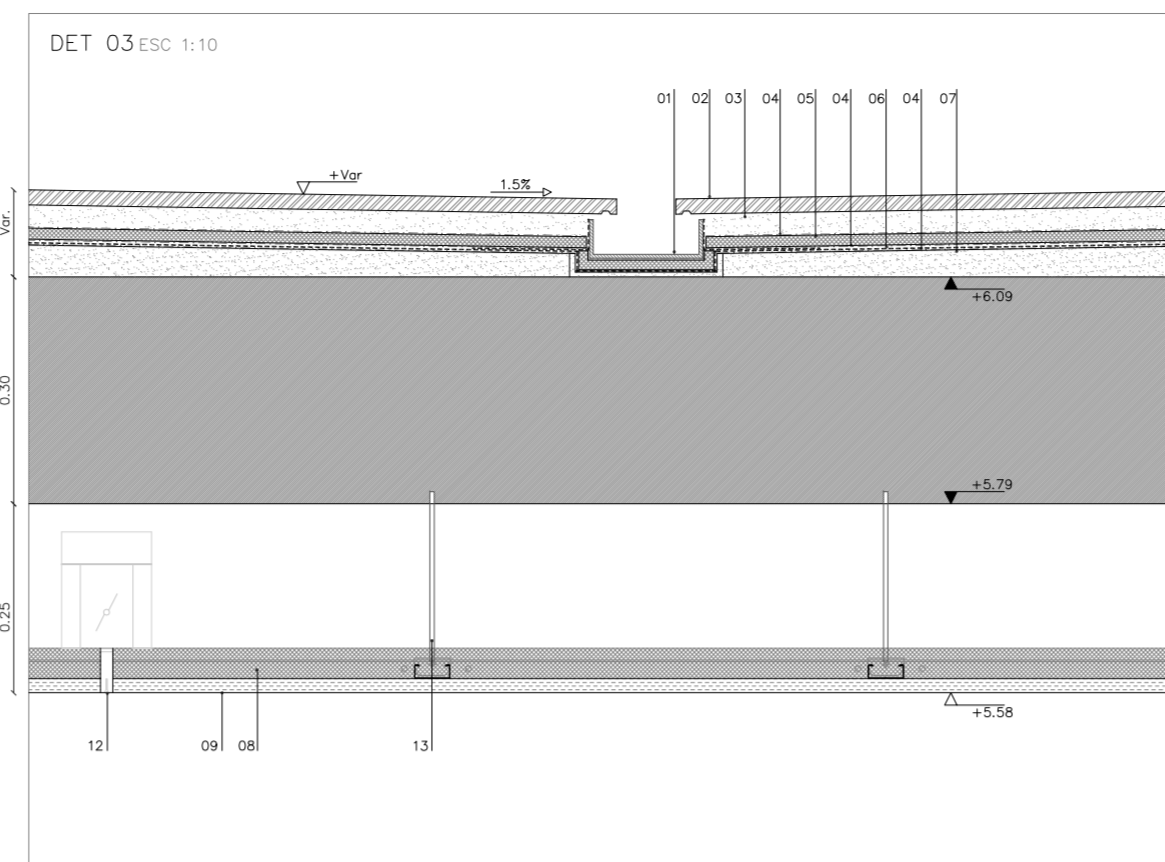
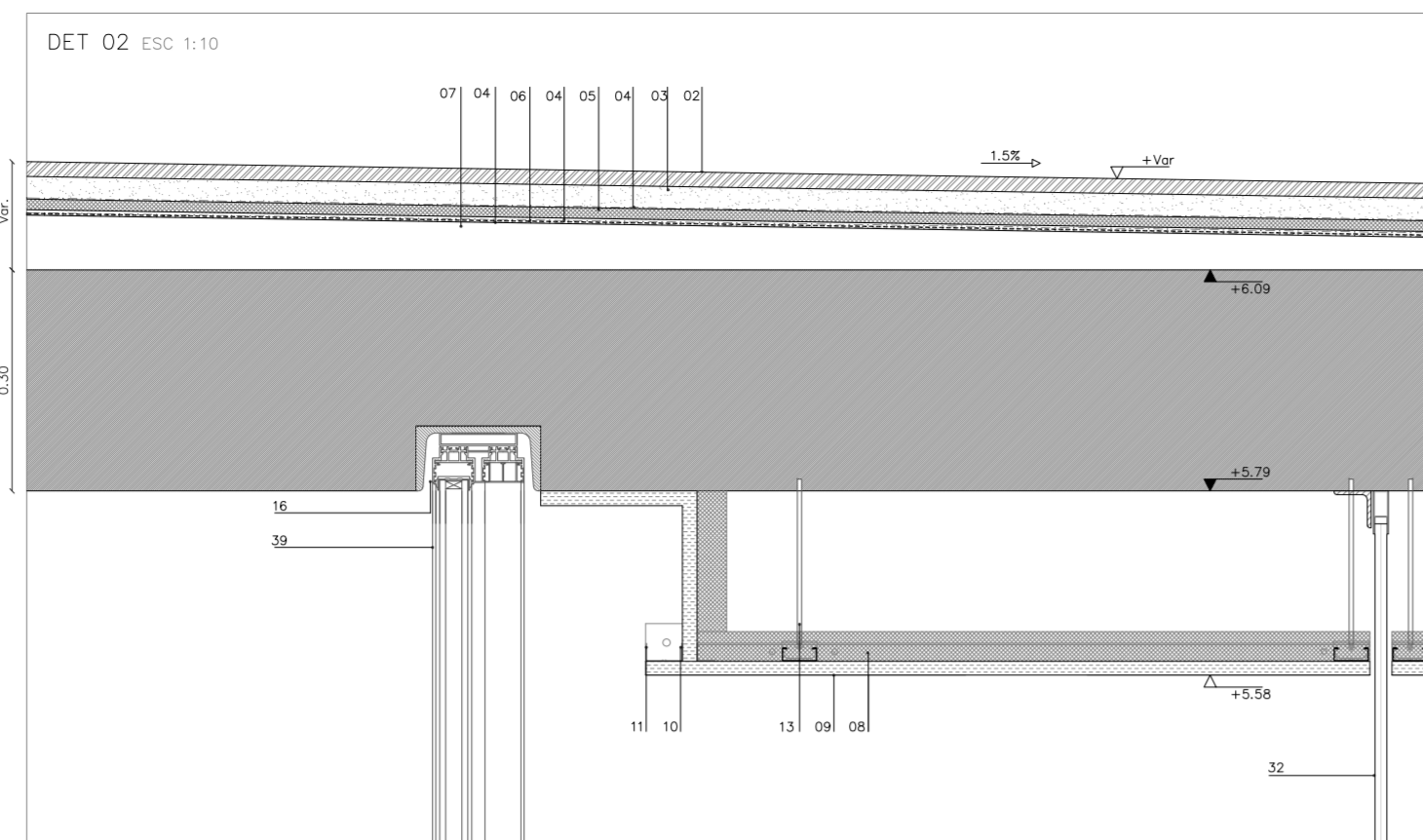
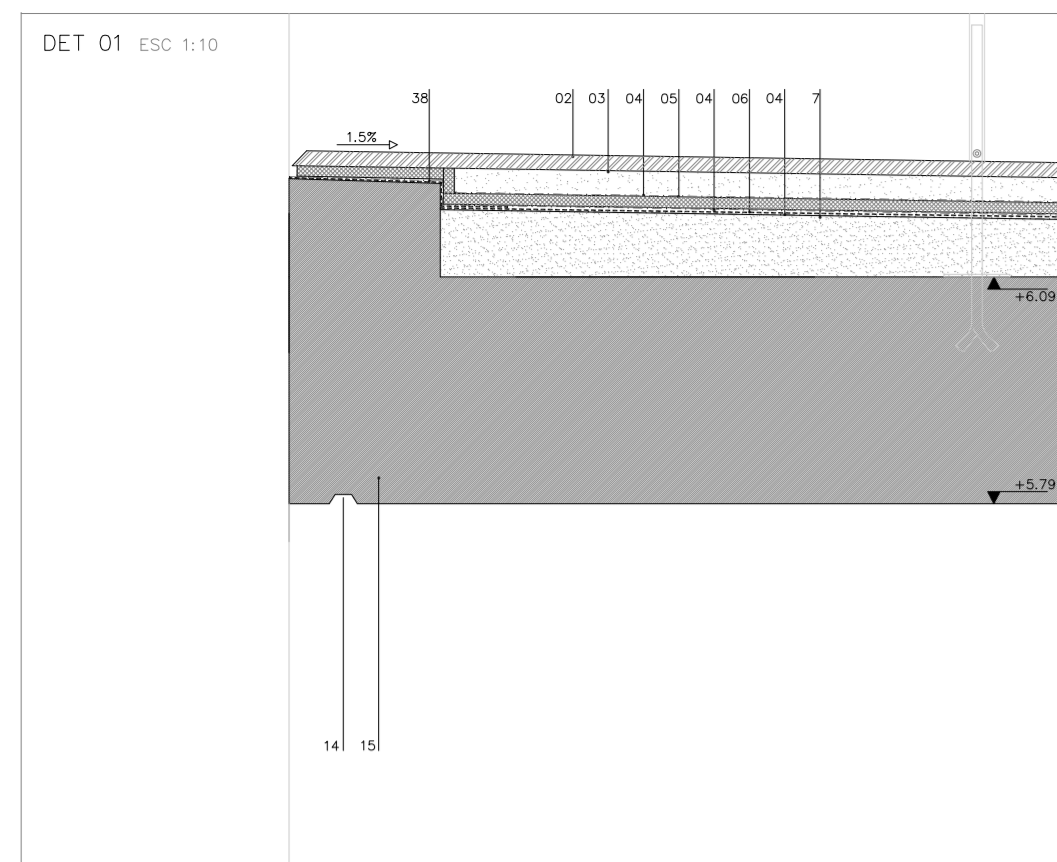
SECCIÓN T6



SECCIÓN T7







LEYENDA DE MATERIALES													
	LADRILLO		PIEDRA		REVOCO		GRAVA		VIDRIO		ALUMINIO		YESO
	HORMIGON		MADERA		REGULARIZACION		TIERRA		CONTRACHAPADO		ACERO-INOX		AIS. TERMICO

01. CANALÓN DE ZINC ø5mm	14. GOTERÓN	27. LÁMINA AISLANTE DE ESPUMA DE POLIETILENO
02. PIEDRA NATURAL TIPO SAN VICENTE ø200mm; ACABADO ARENADO	15. MURO DE HORMIGÓN ARMADO PINTADO CON LA URDURA VISTA DEL ENCOTRADO	28. FILM DE POLIETILENO
03. CAPA DE MORTERO DE CEMENTO DE AGARRE	16. CARPINTERÍA EXTERIOR PANDORAHH CORREDERA 8-BRAL DE ALUMINIO LACADO	29. PAVIMENTO DE PIEDRA NATURAL CALIZA CAPRI ø200mm
04. GEOTEXTIL	17. ENLUCIDO DE YESO PINTADO	30. 2 x PLACA YESO LAMINADA PINTADA 15MM
05. LÁMINA AISLANTE REFLEXIVA AIR BUR 8+8mm	18. DESAGÜE CARPINTERÍA	31. PERIL METÁLICO 90mm
06. LÁMINA IMPERMEABLE PVC	19. CANALETA DE DRENAJE	32. VORBO LAMINADO 8+8mm
07. CAPA DE MORTERO AUTONVELANTE	20. LÁMINA DRENANTE	33. OSCURO PERMETRAL DE ALUMINIO LACADO
08. LANA DE ROCA 400mm	21. GRAYA	34. BANDA DE ESTANQUEIDAD
09. FALSO TECHO CARTÓN-YESO PINTADO	22. ARISO COMPACTADO CON ESTRUCTURA ALVEOLAR	35. PAVIMENTO CONTINÜO
10. LUMINARIA LINEAL DE LED, LUZ INDIRECTA	23. LÁMINA IMPERMEABLE LEM	36. TUBO DE DRENAJE ø200mm
11. OSCURO PERMETRAL	24. IMPRIMACION ASFÁLTICA	37. JUNTA HORIZONTAL
12. DIFUSOR LINEAL DE CLIMATIZACIÓN. TROX	25. MURO DE HORMIGÓN 30cm	38. LÁMINA AISLANTE AUTOPROTEGIDA
13. ESTRUCTURA METÁLICA DE FASO TECHO	26. TRASDOSADO AUTOPORTANTE	39. VIDRIO EXTRAOLARO 8/16/8 mm

