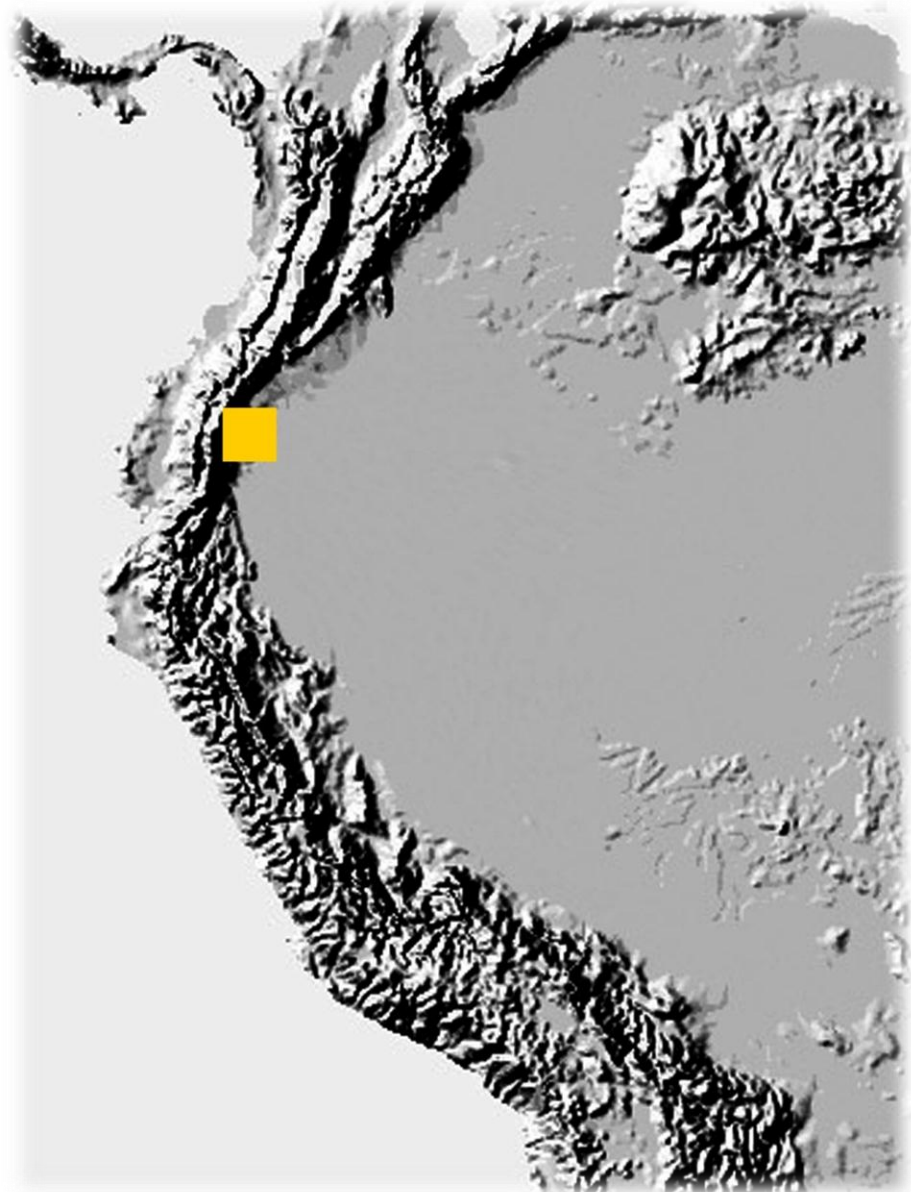


Hospital General  
Distrito Metropolitano de Quito

- 01 lugar y contexto
- 02 aproximación
- 03 programa
- 04 planos
- 05 estructura
- 06 construcción

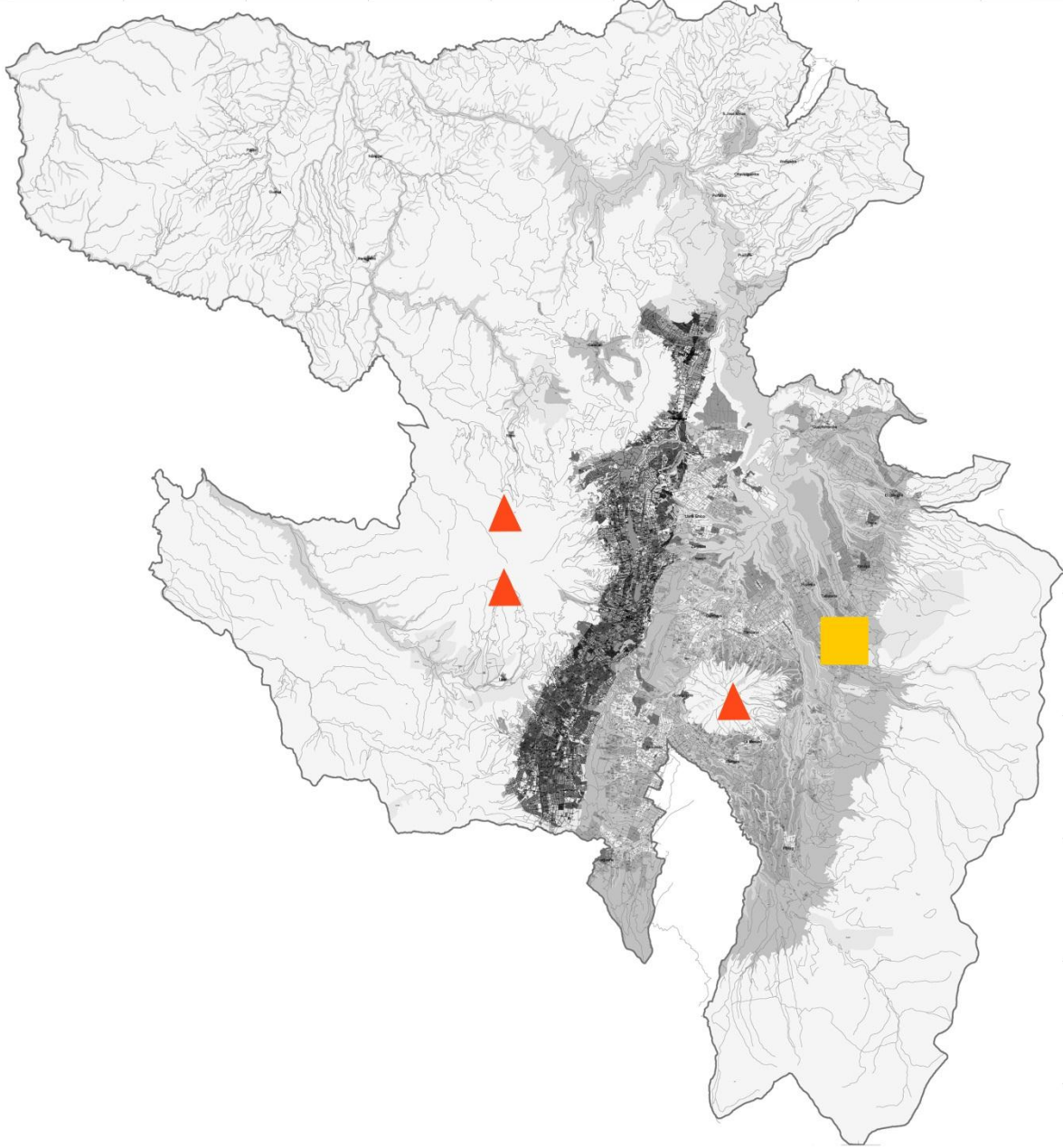






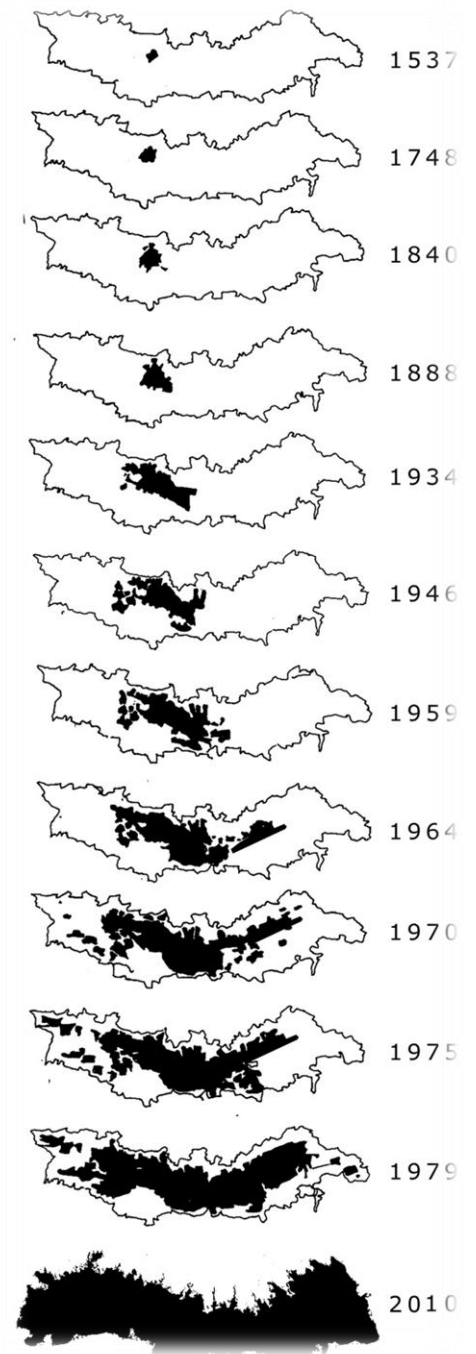




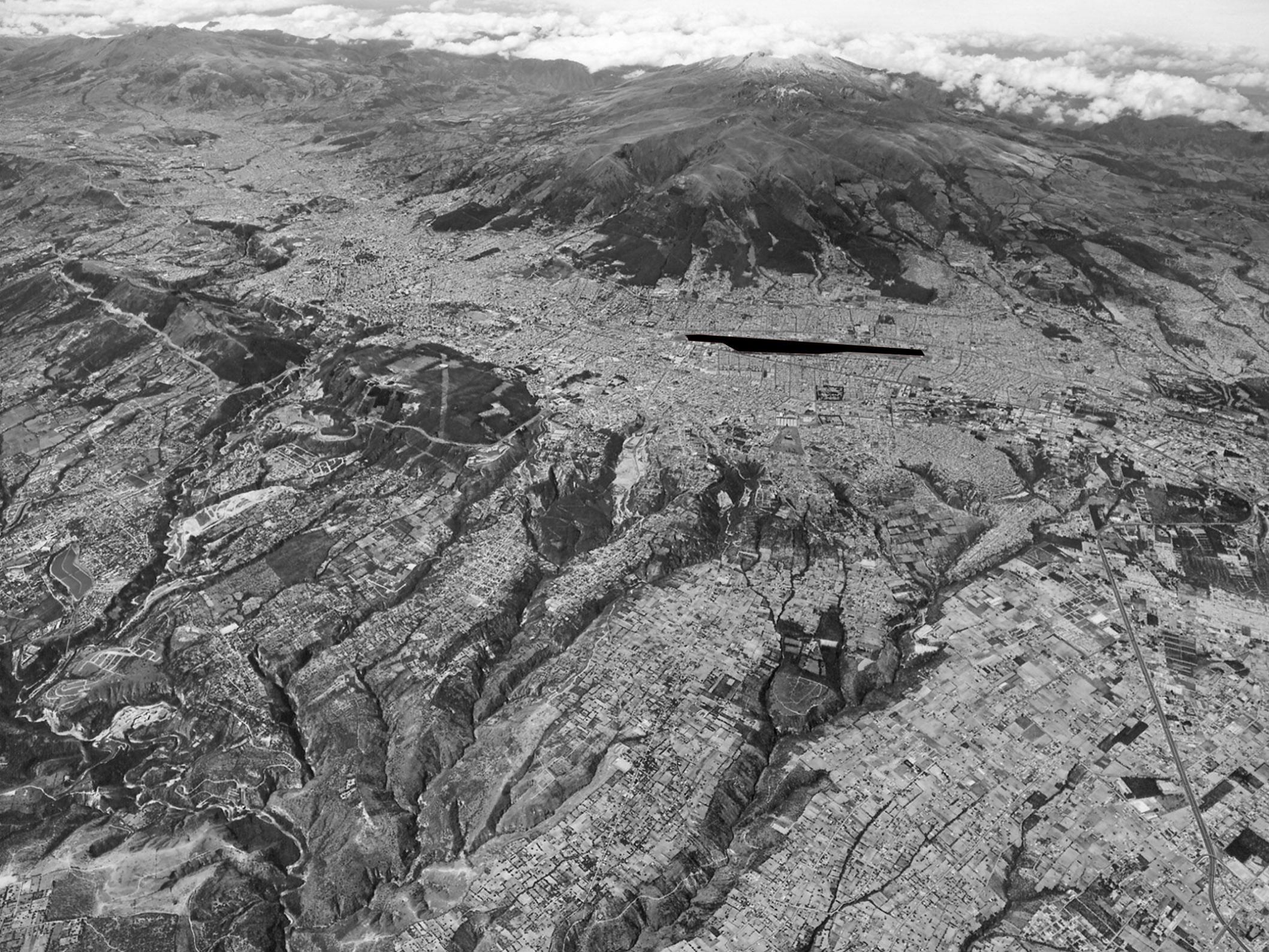


Distrito Metropolitano de Quito  
la ciudad se alza en torno a los 2830 metros  
sobre el nivel del mar. los picos mas altos del  
distrito alcanzan los 4800 metros de altura



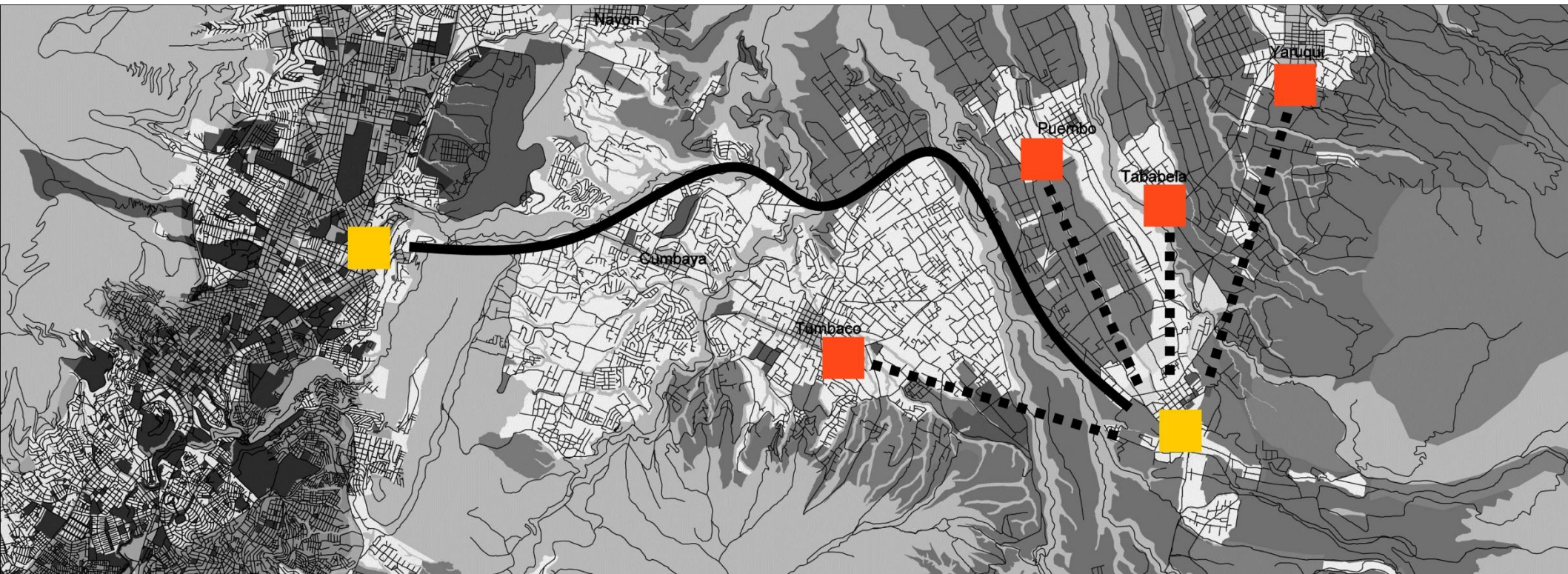


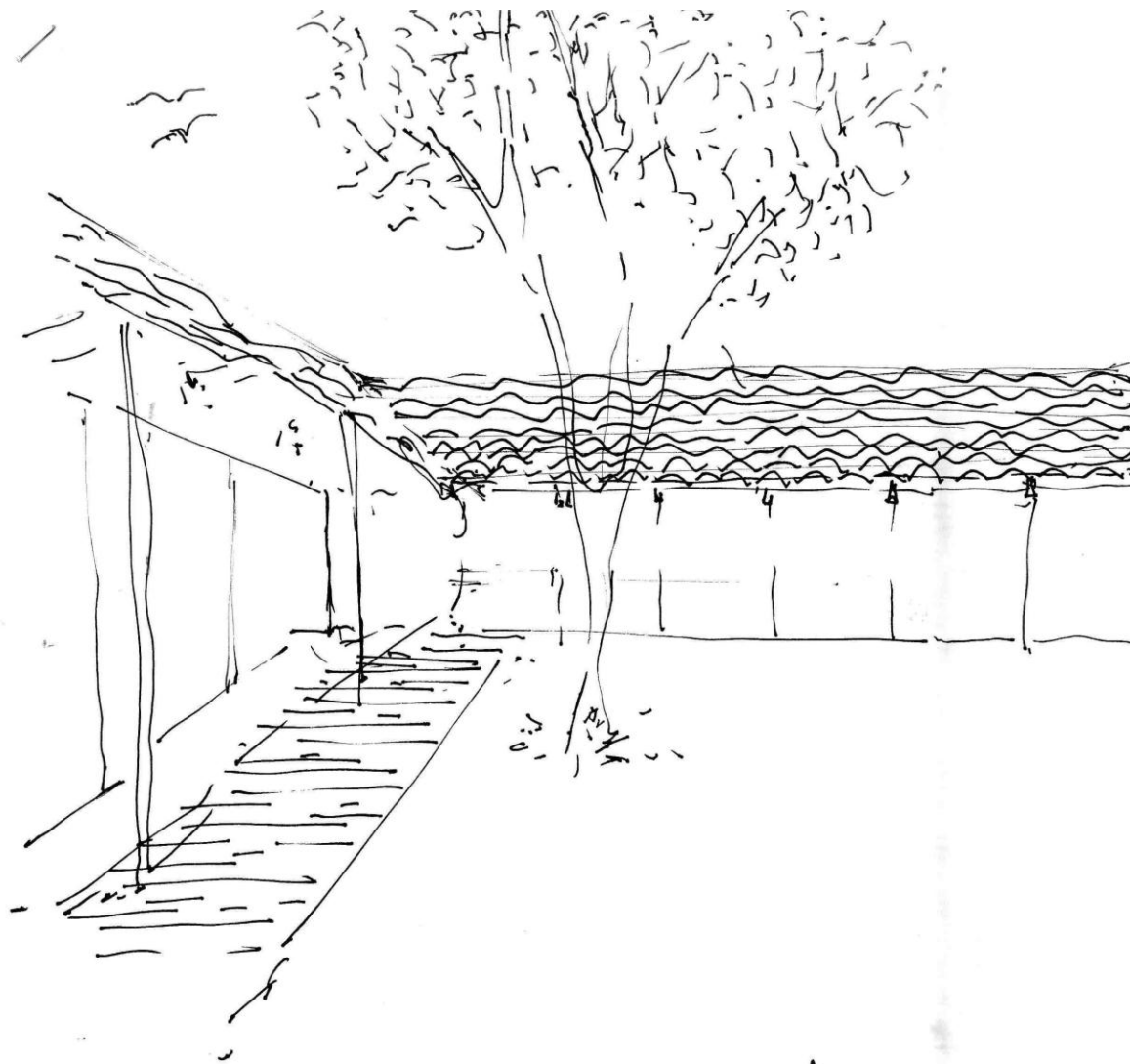












for plan.



02  
aproximación

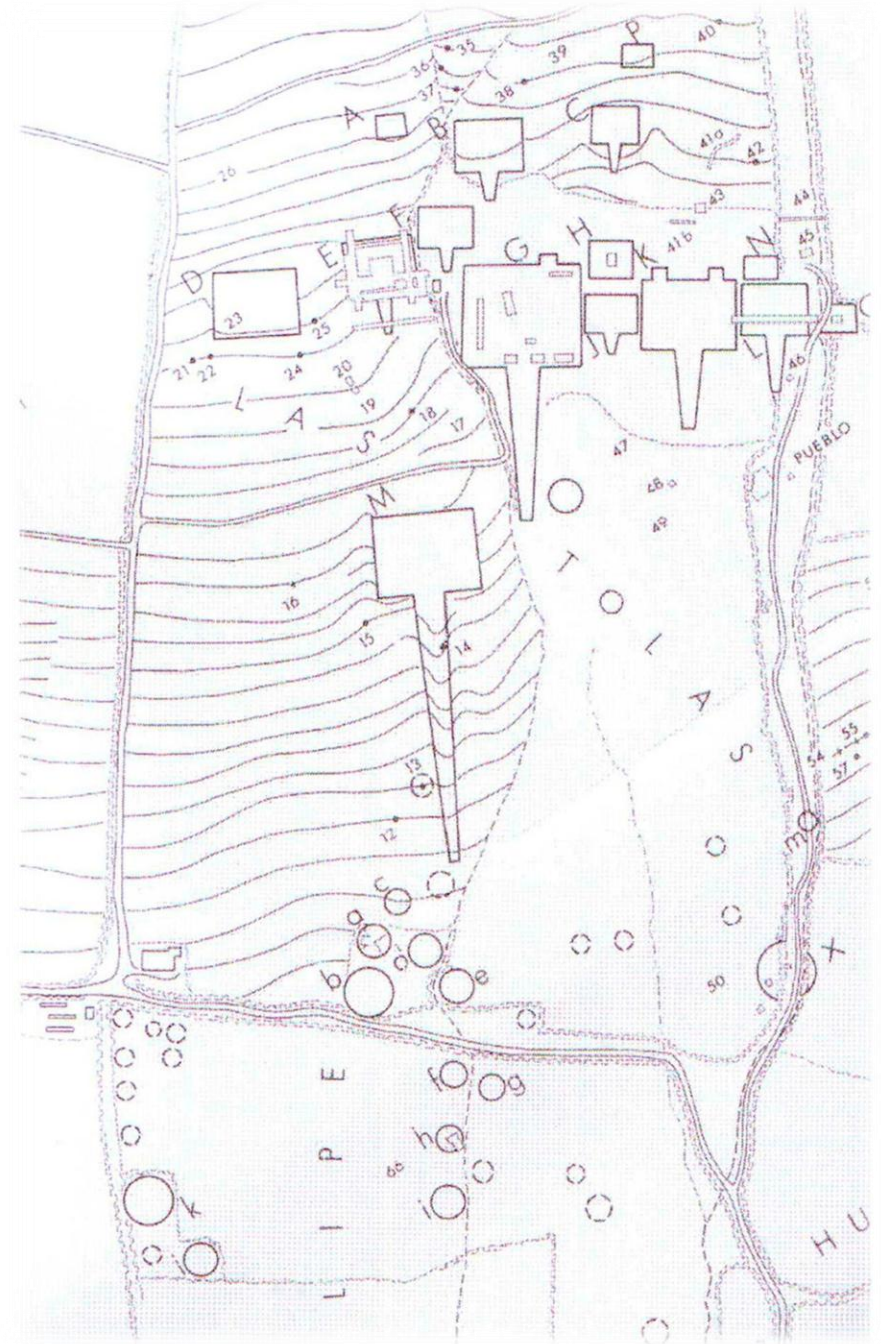


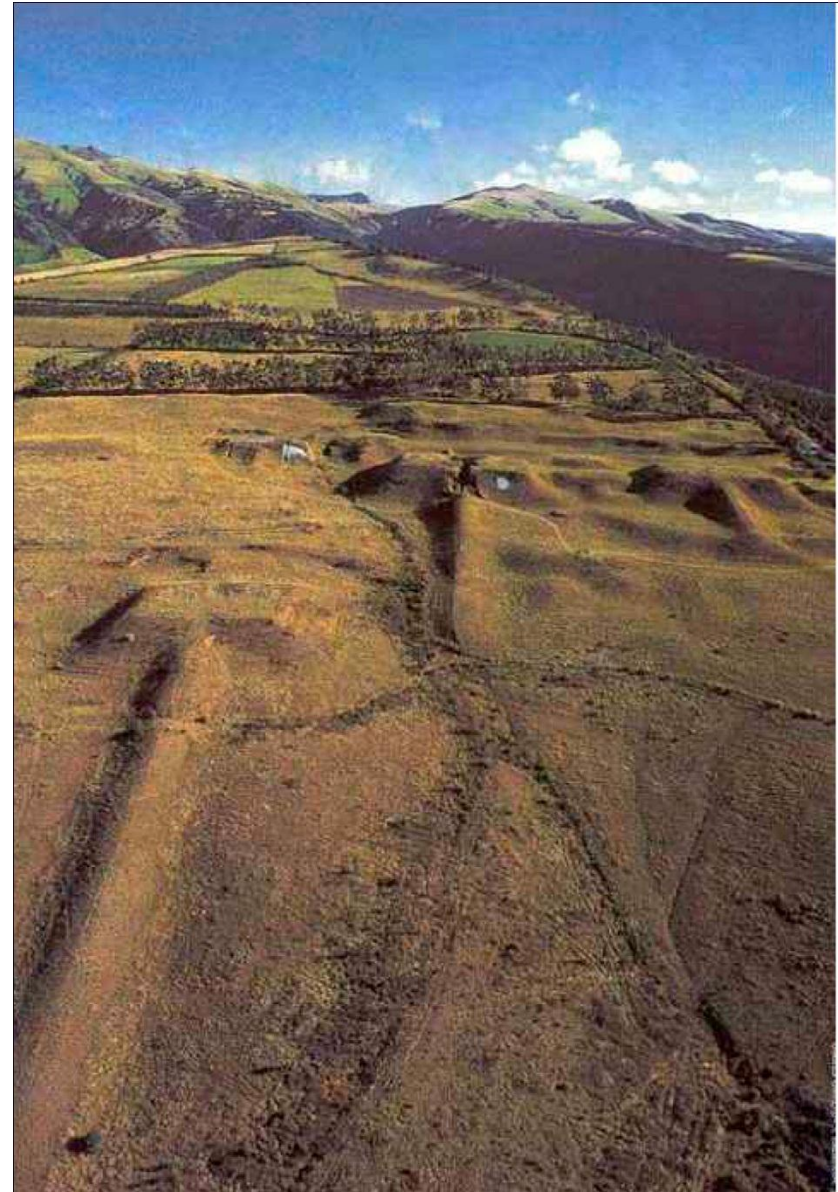
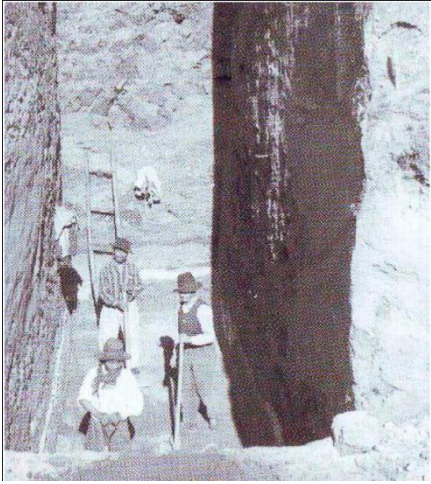


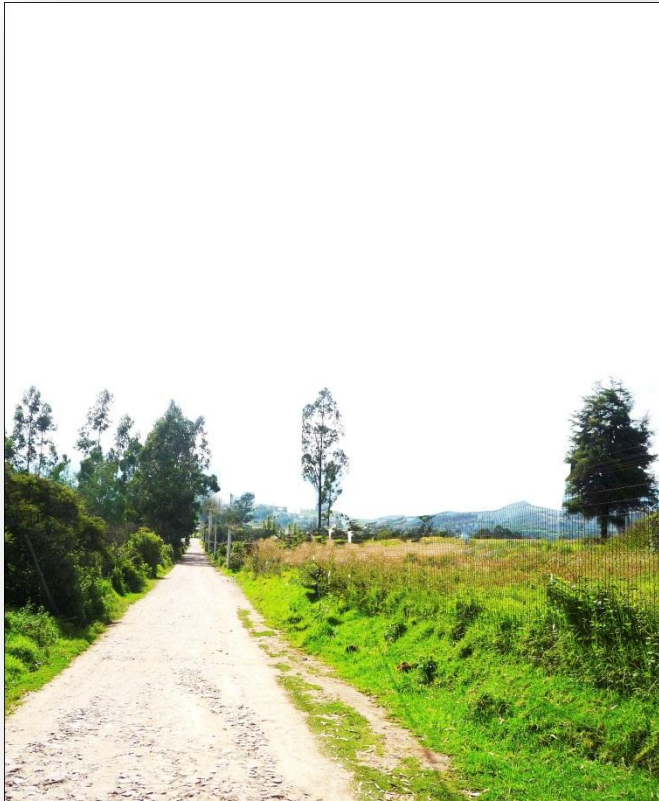




Referencia arqueológica.  
Pirámides de Cochasqui







el solar

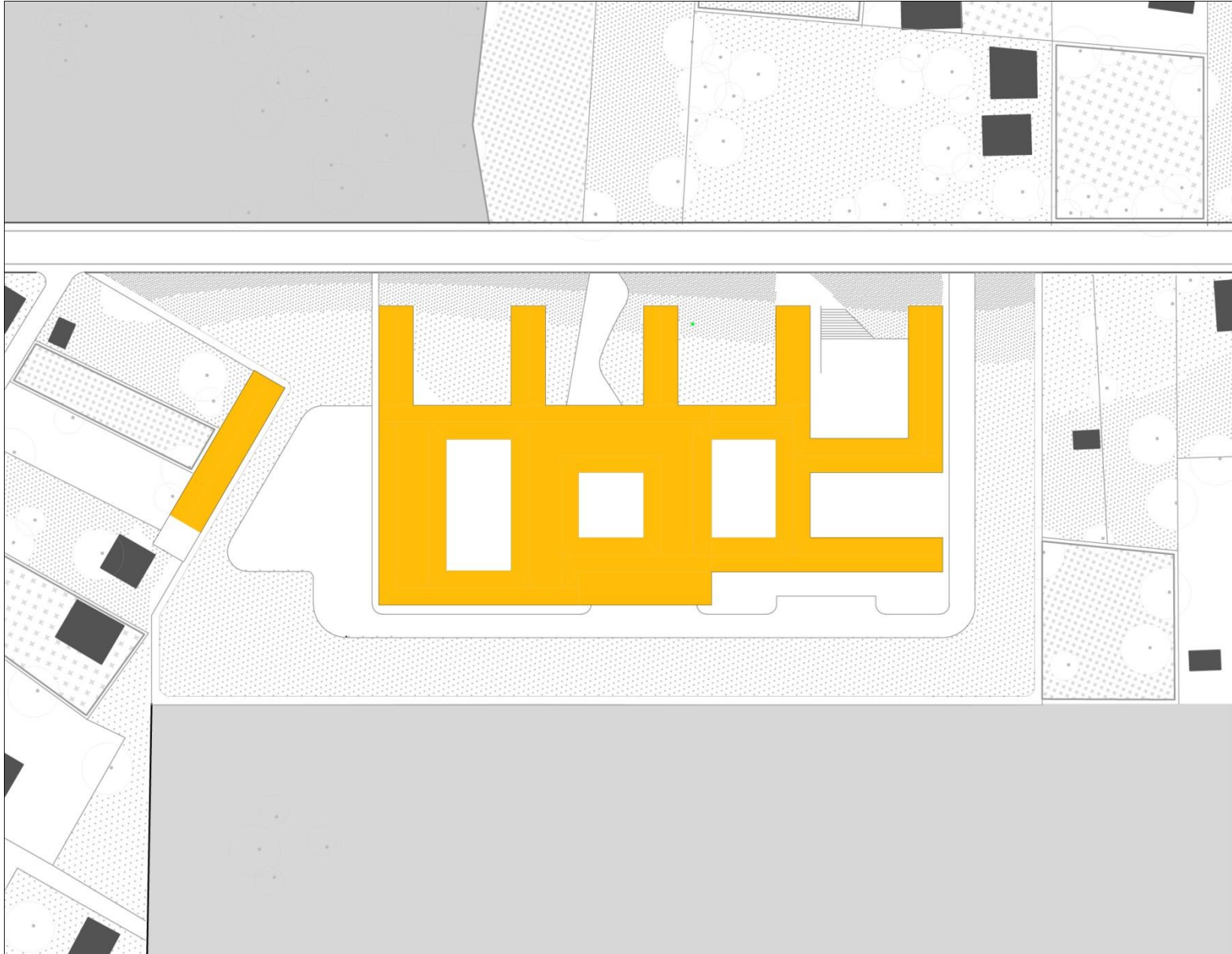




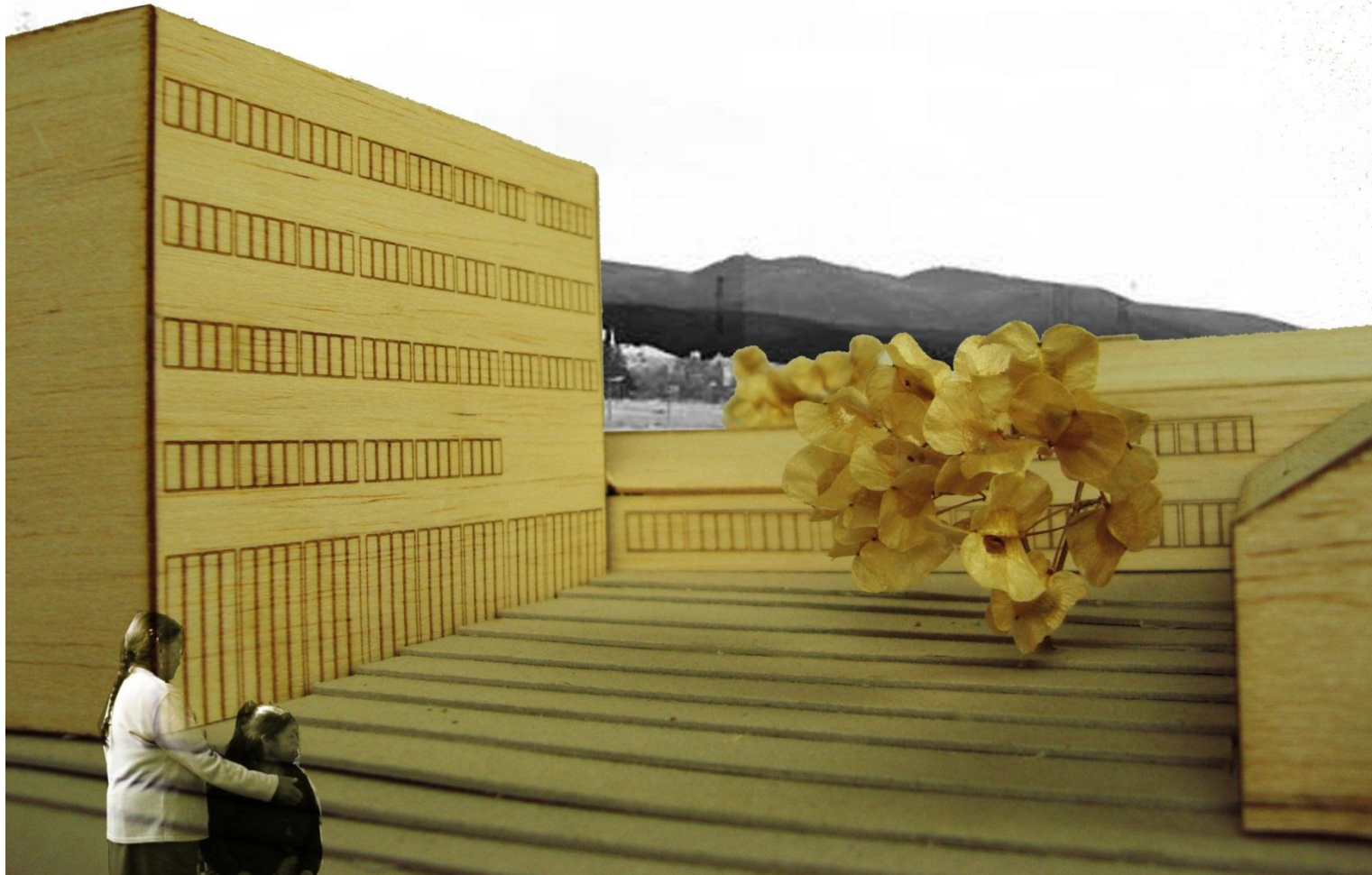


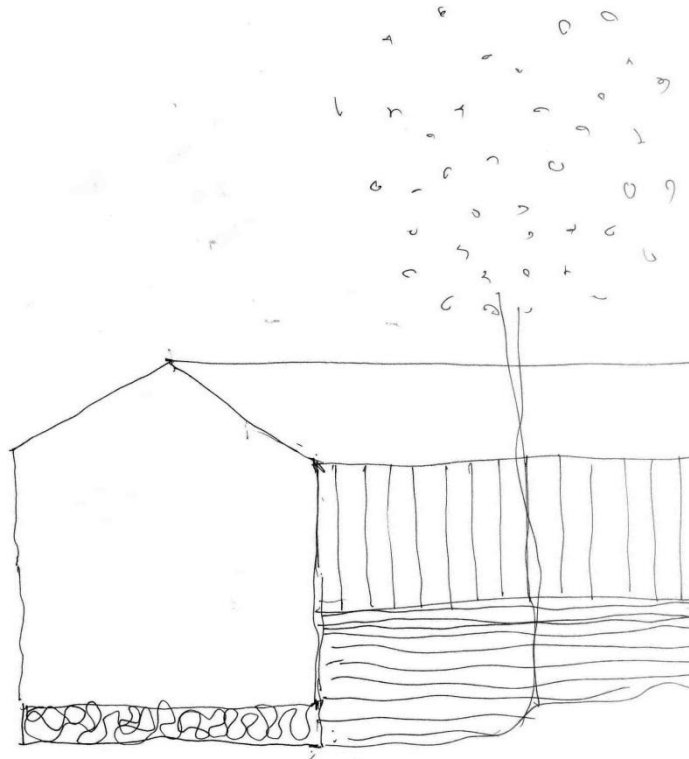












### superficie construida

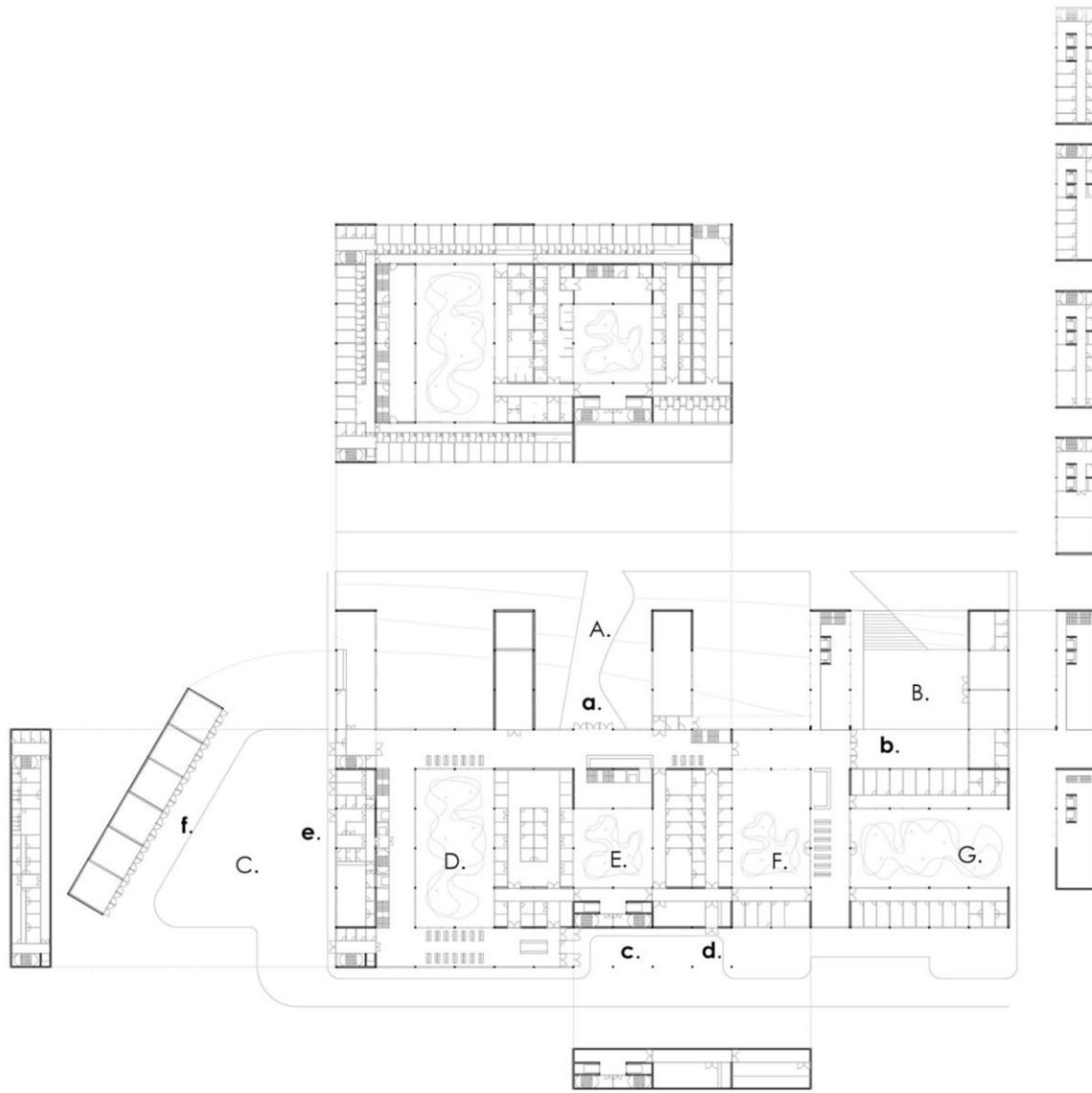
1. consulta externa 1200 m2.
2. urgencias 1300 m2.
3. imagen 600 m2.
4. servicios auxiliares de diagnostico 1100m2.
5. UCI 400 m2.
6. unidad quirúrgica y esterilización 1000m2.
7. servicios e intalaciones 1400 m2.
8. administración y servicios complementarios 2800m2
9. circulación 3400 m2

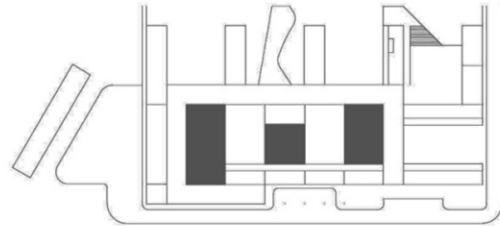
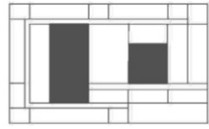
### ingresos

- a.** general
- b.** consulta externa
- c.** urgencias
- d.** medicamentos
- e.** cocinas
- f.** instalaciones

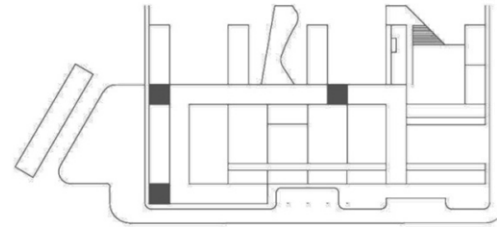
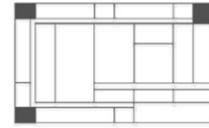
### exterior

- A. rampa de ingreso general
- B. plaza
- C. plaza de servicios
- D. patio de urgencias
- E. patio central
- F. patio de imagen
- G. jardín de consulta externa

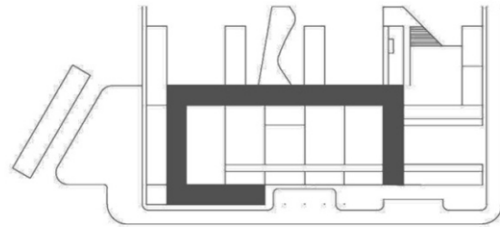
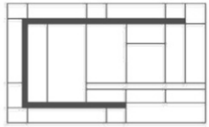




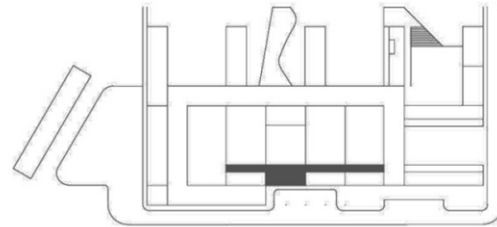
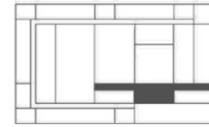
patios



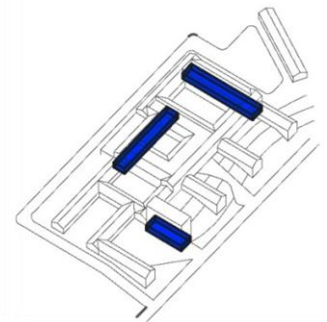
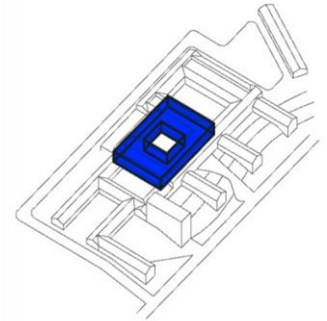
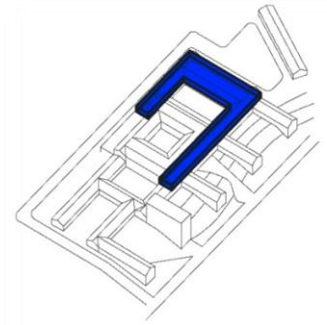
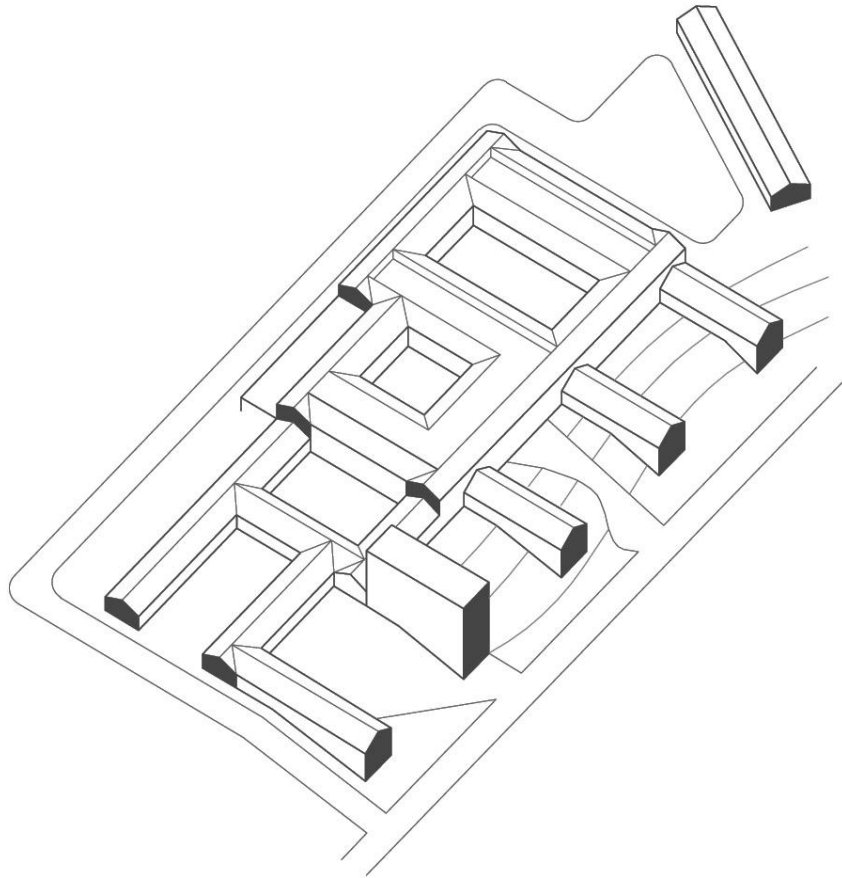
salidas de emergencia

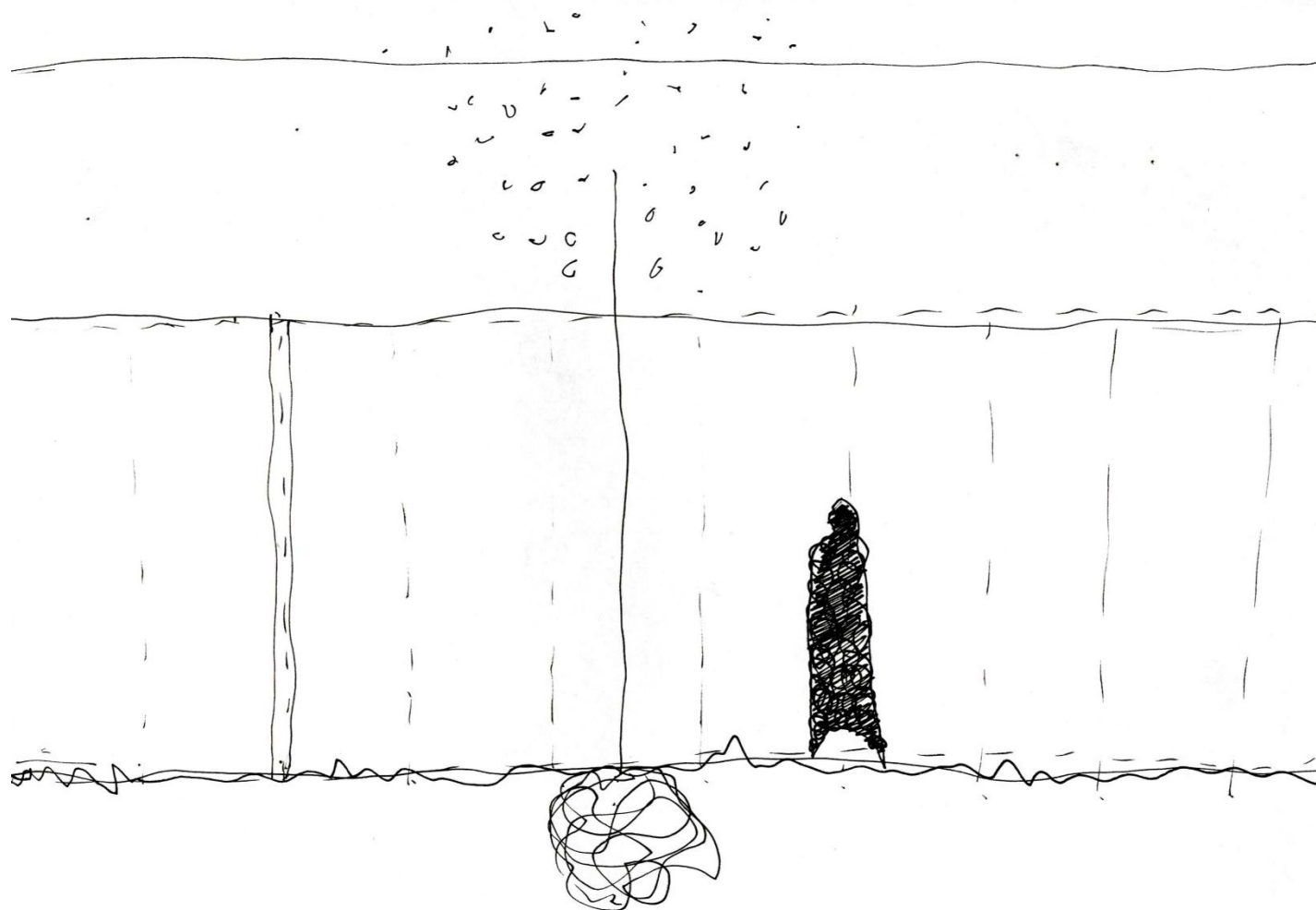


pliegue de comunicaciones  
públicas



comunicación interna

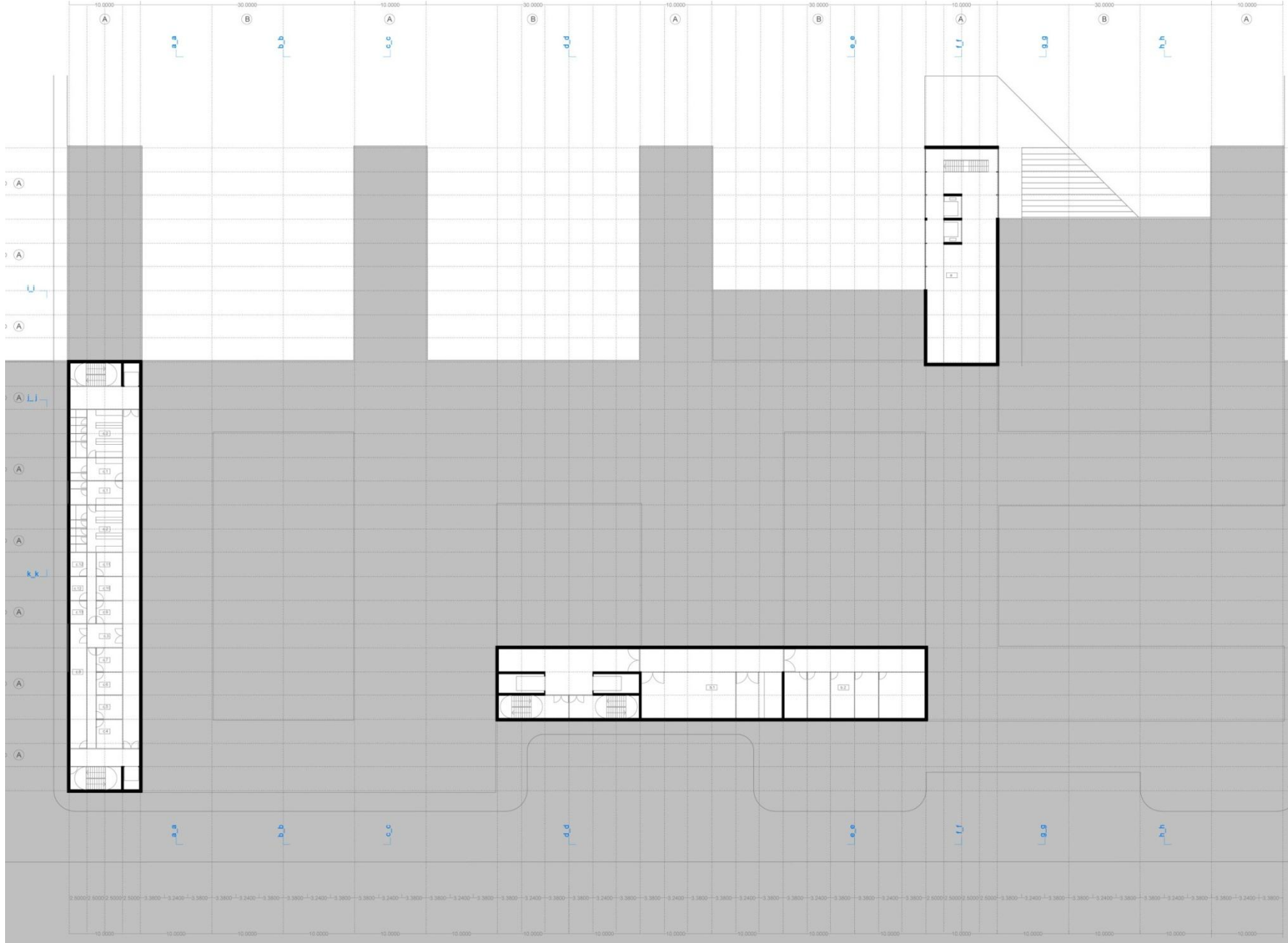






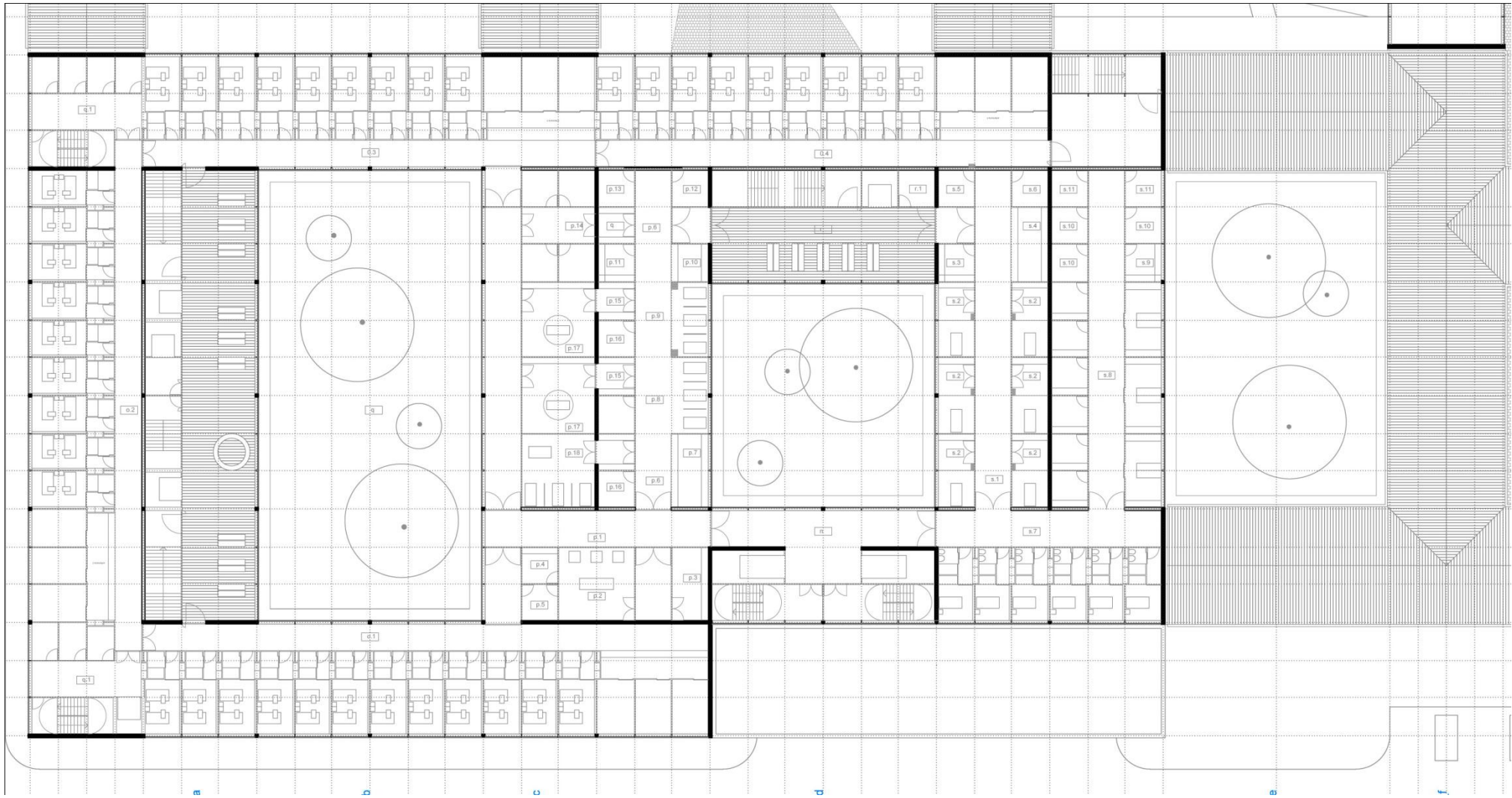
plantas

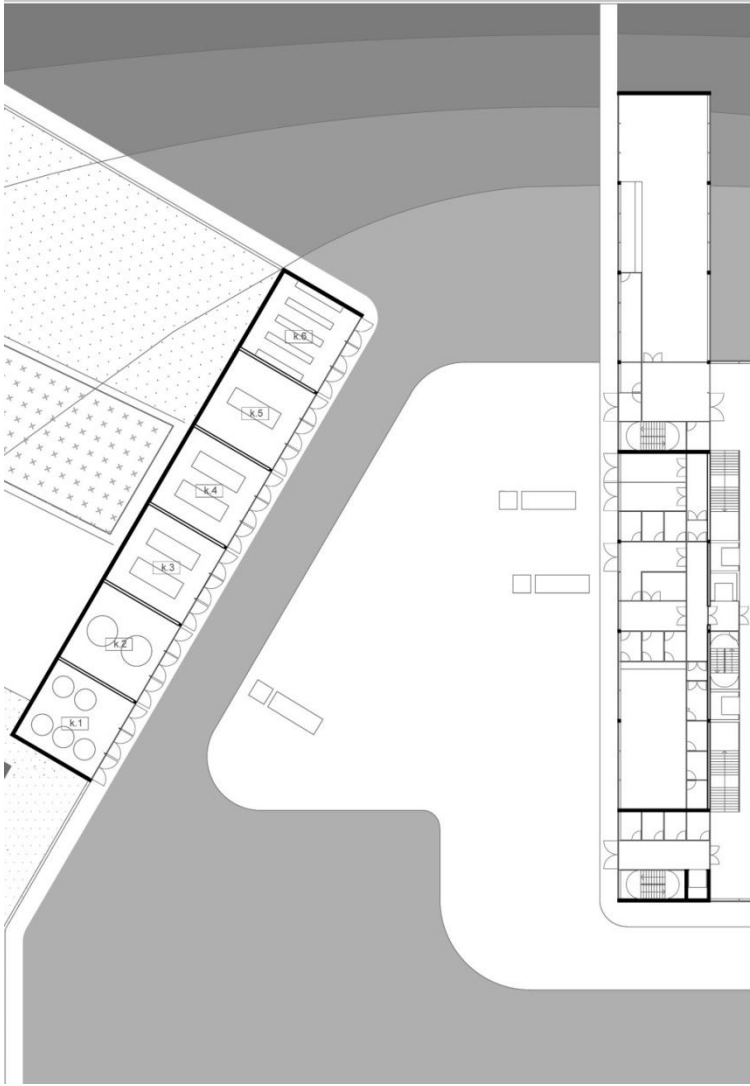


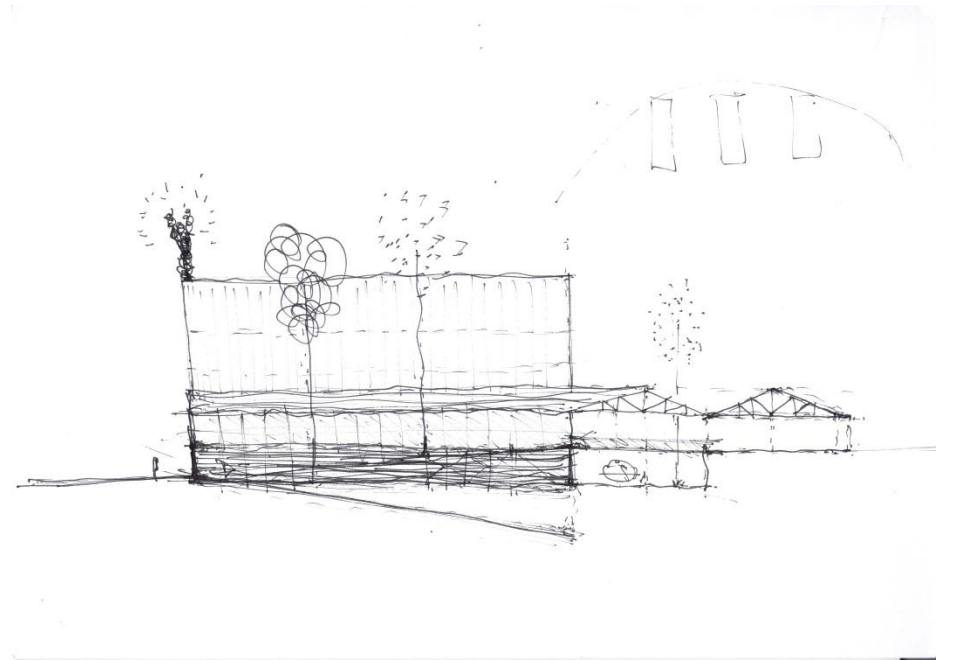
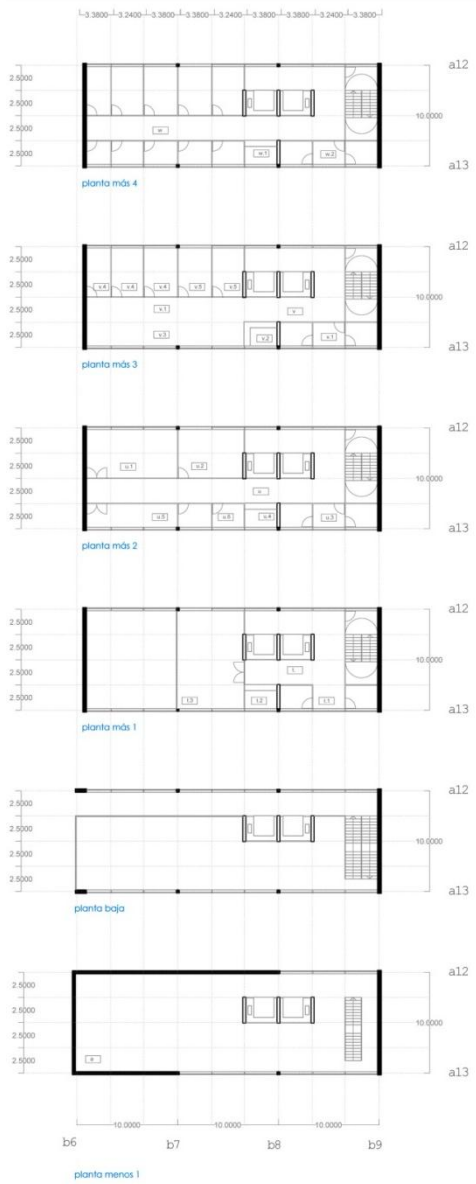


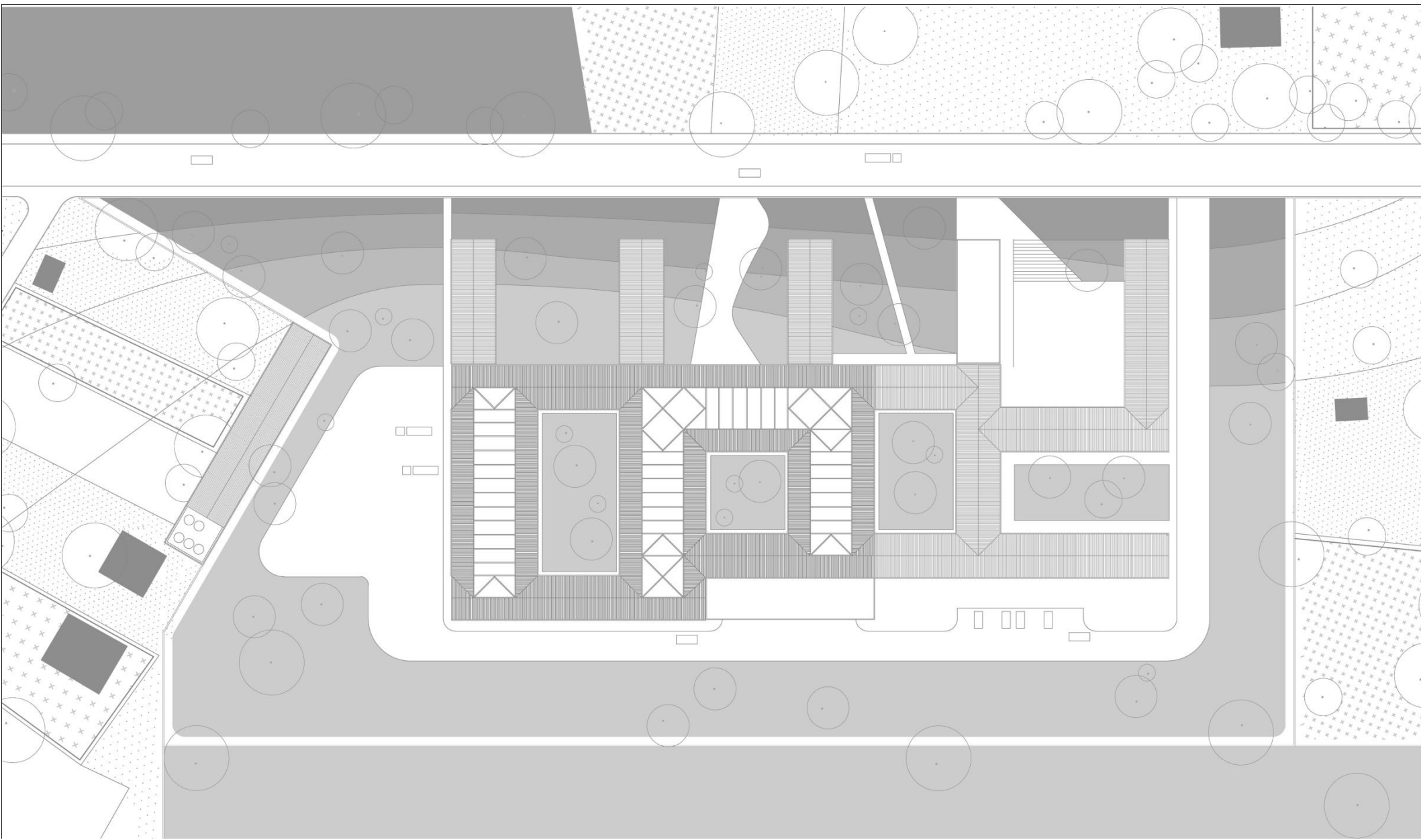










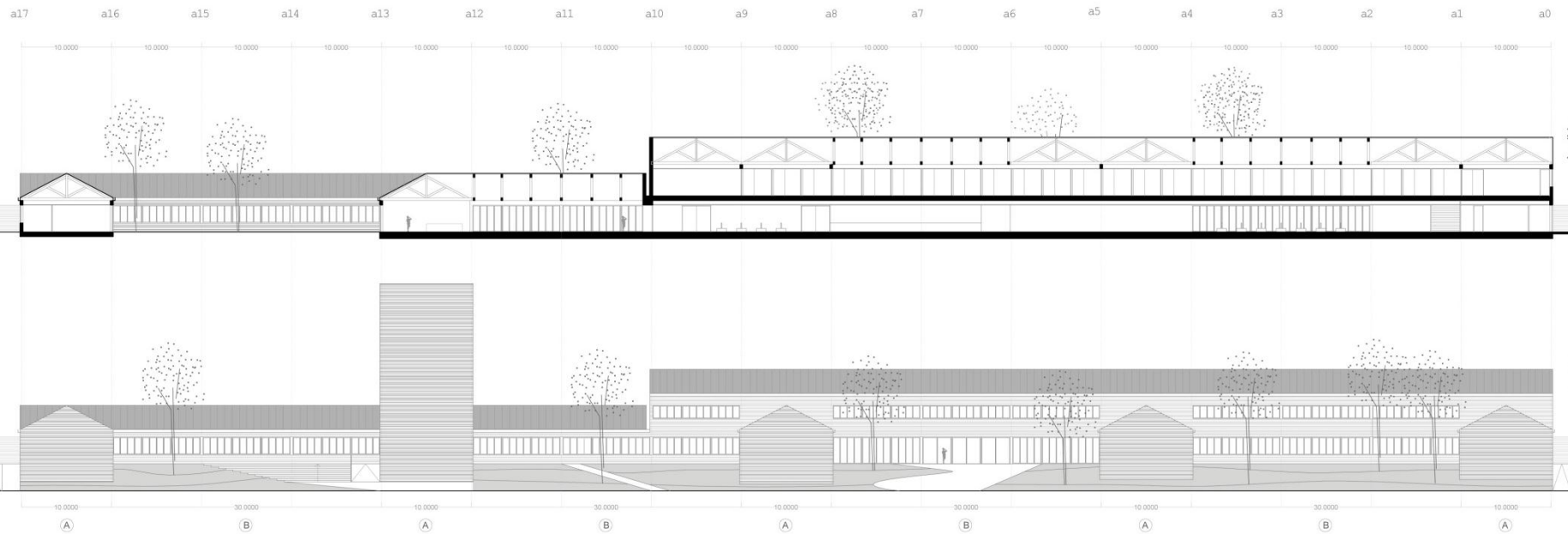
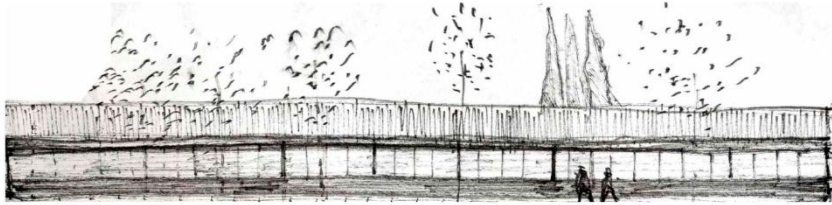




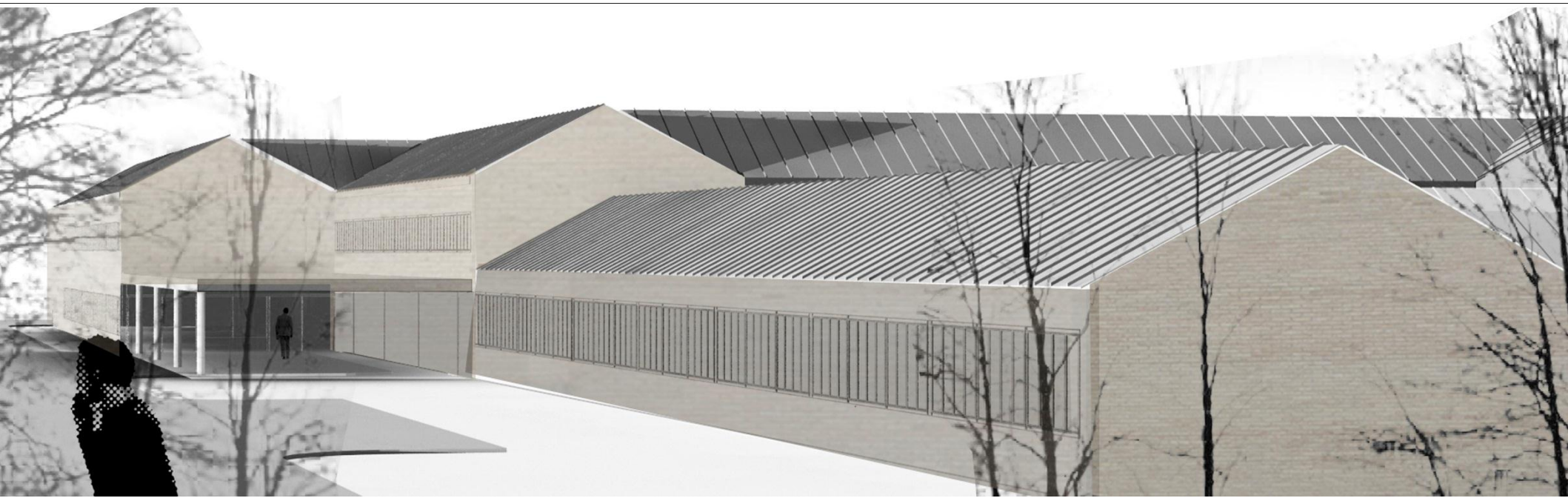
## Alzados y secciones



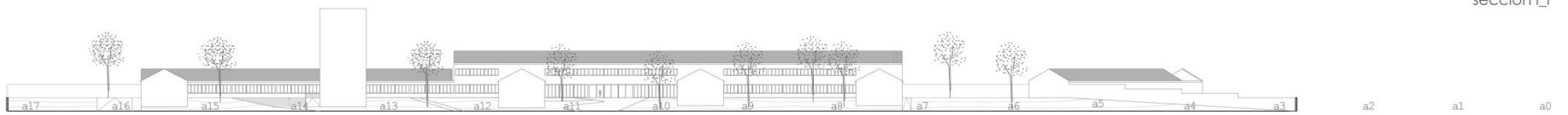
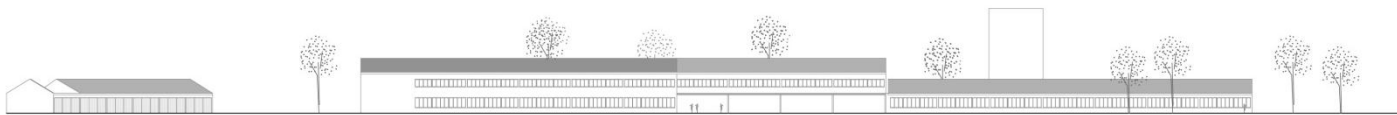
sección j-j y alzado NORTE



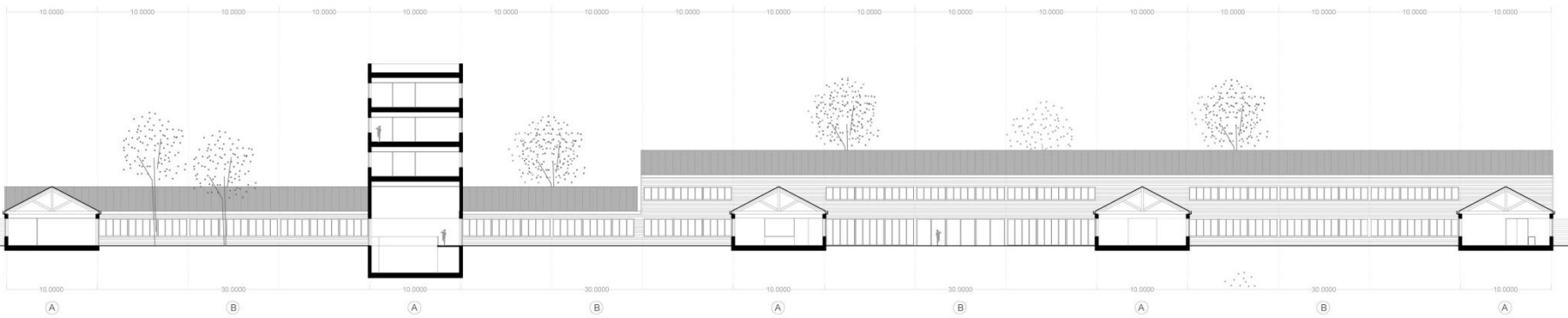




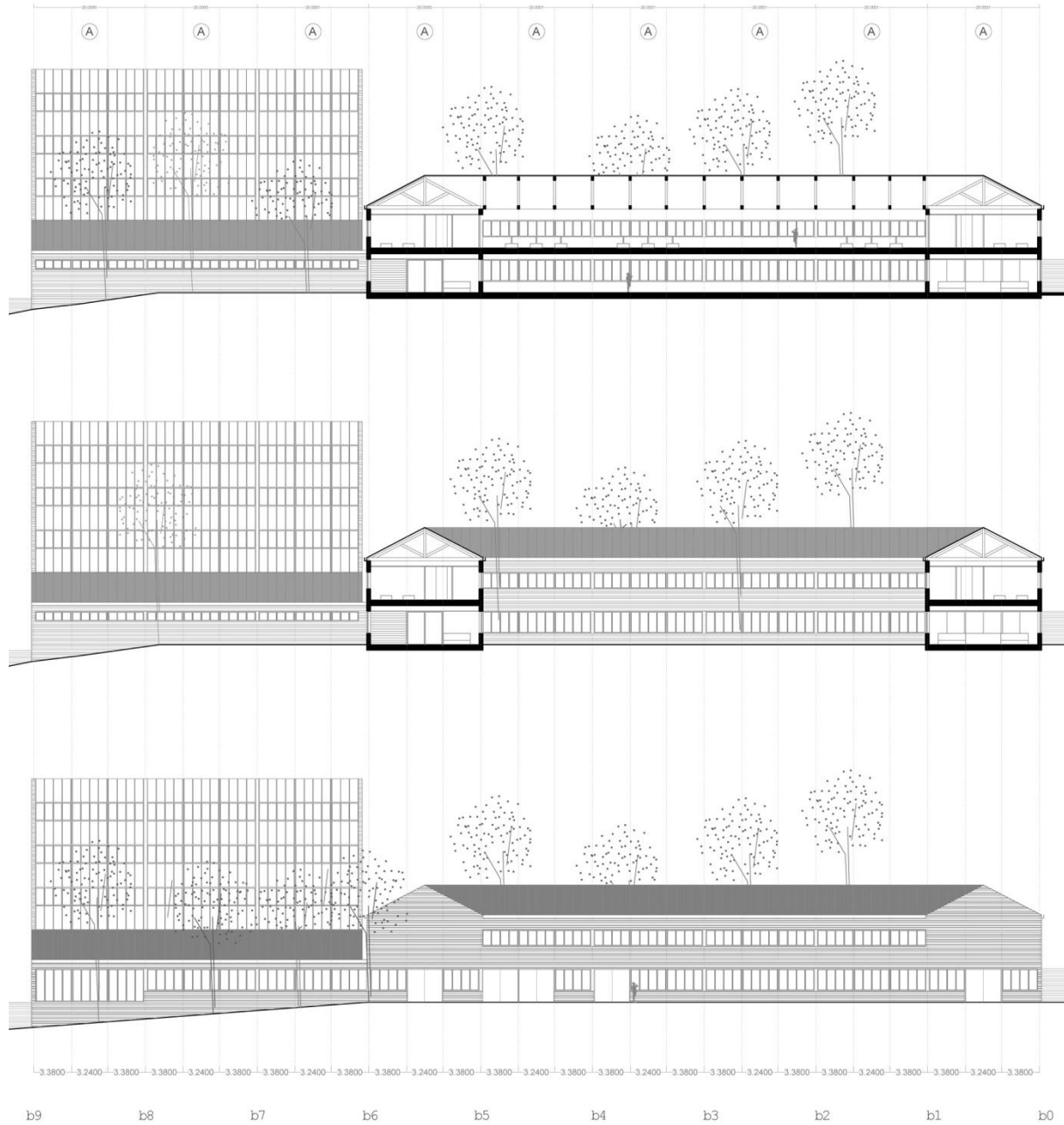
alzado SUR y alzado NORTE



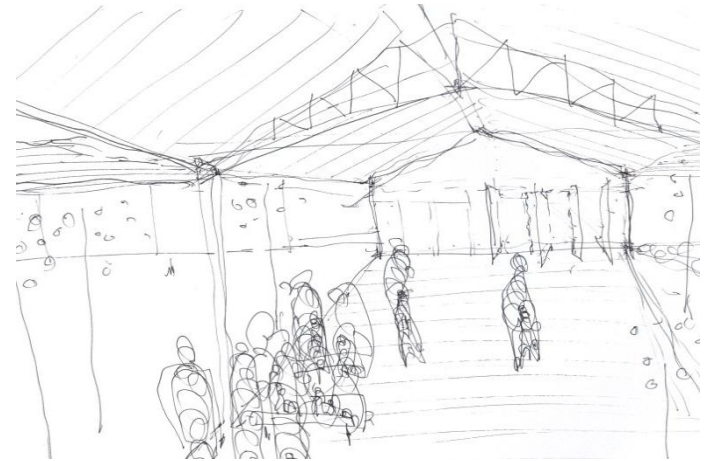
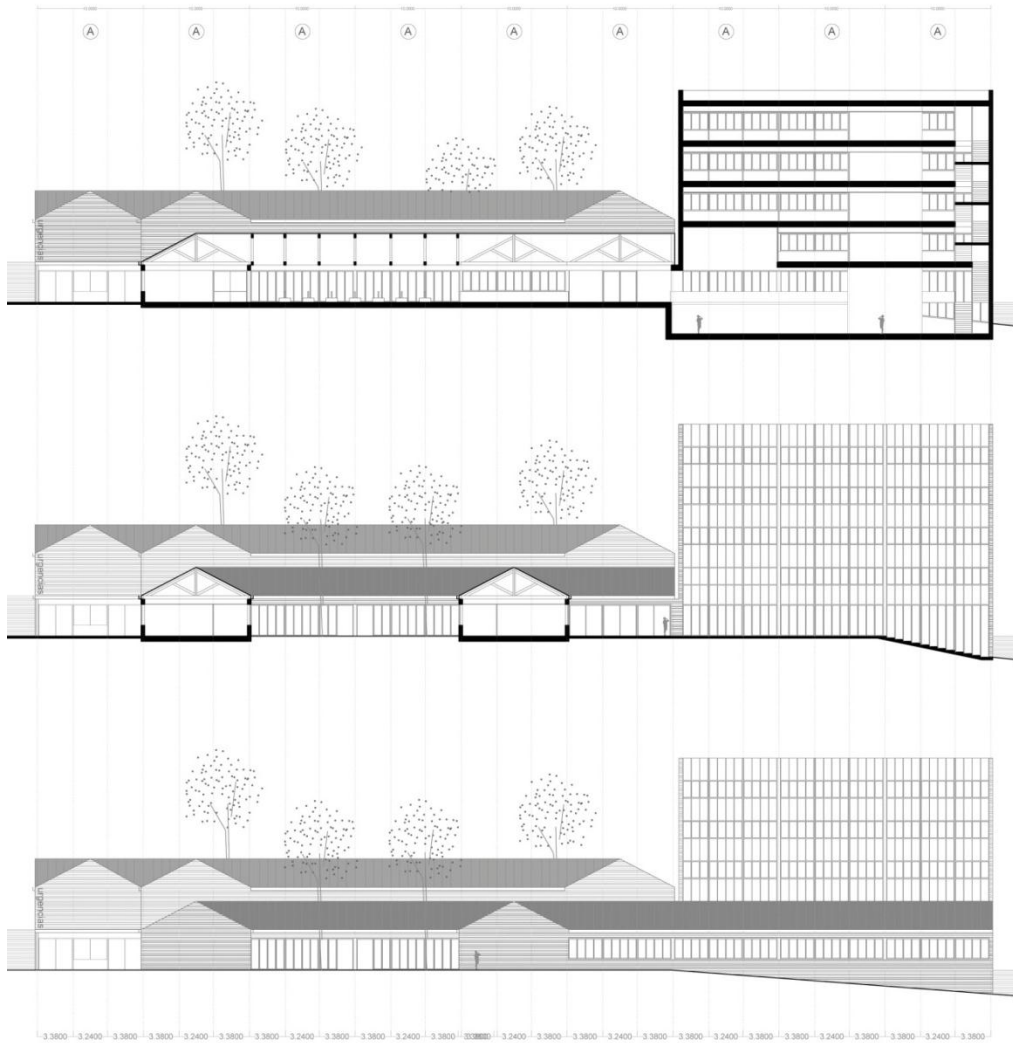
sección i\_j



sección a\_a/b\_b/alzado OESTE



sección f\_f/g\_g/alzado ESTE

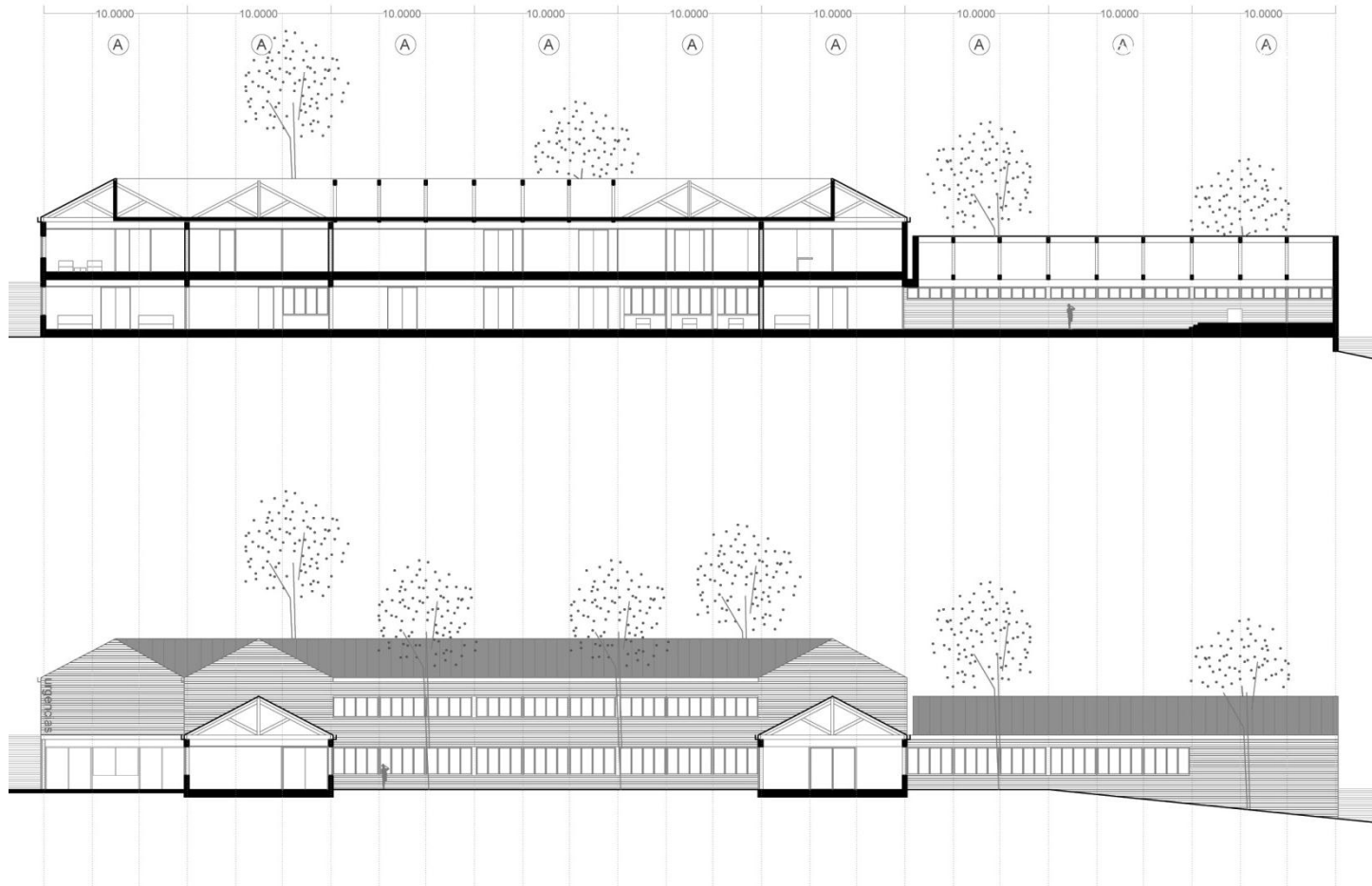








sección c\_c y e\_e



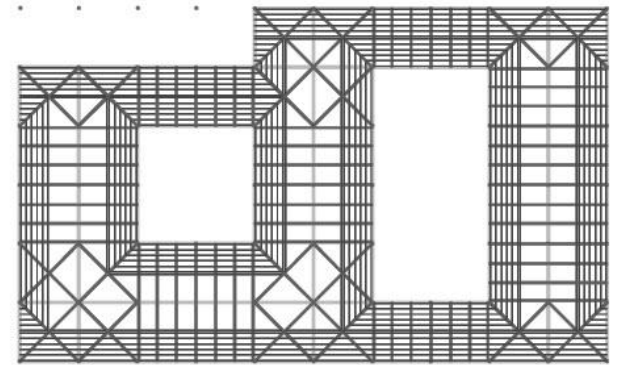
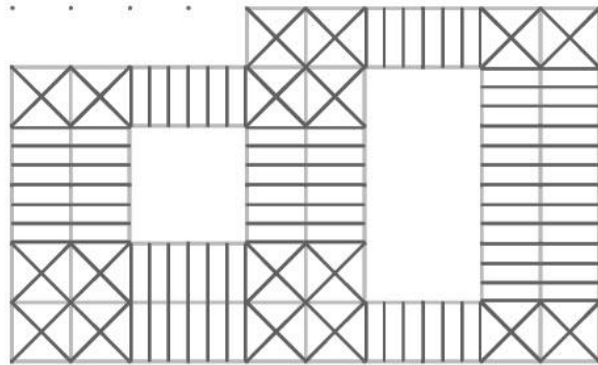
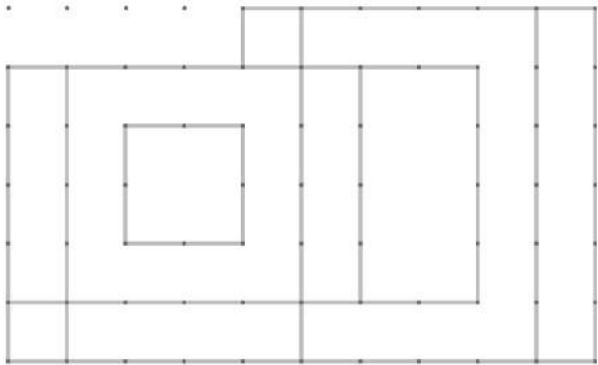
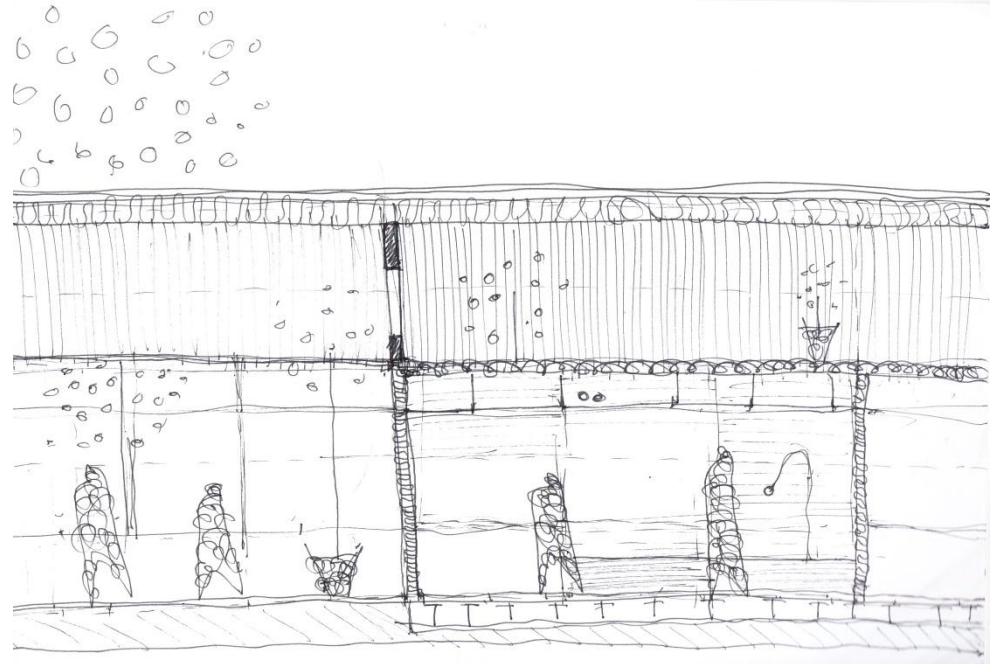


Handwritten notes or annotations at the top of the sketch, possibly indicating a specific detail or measurement.

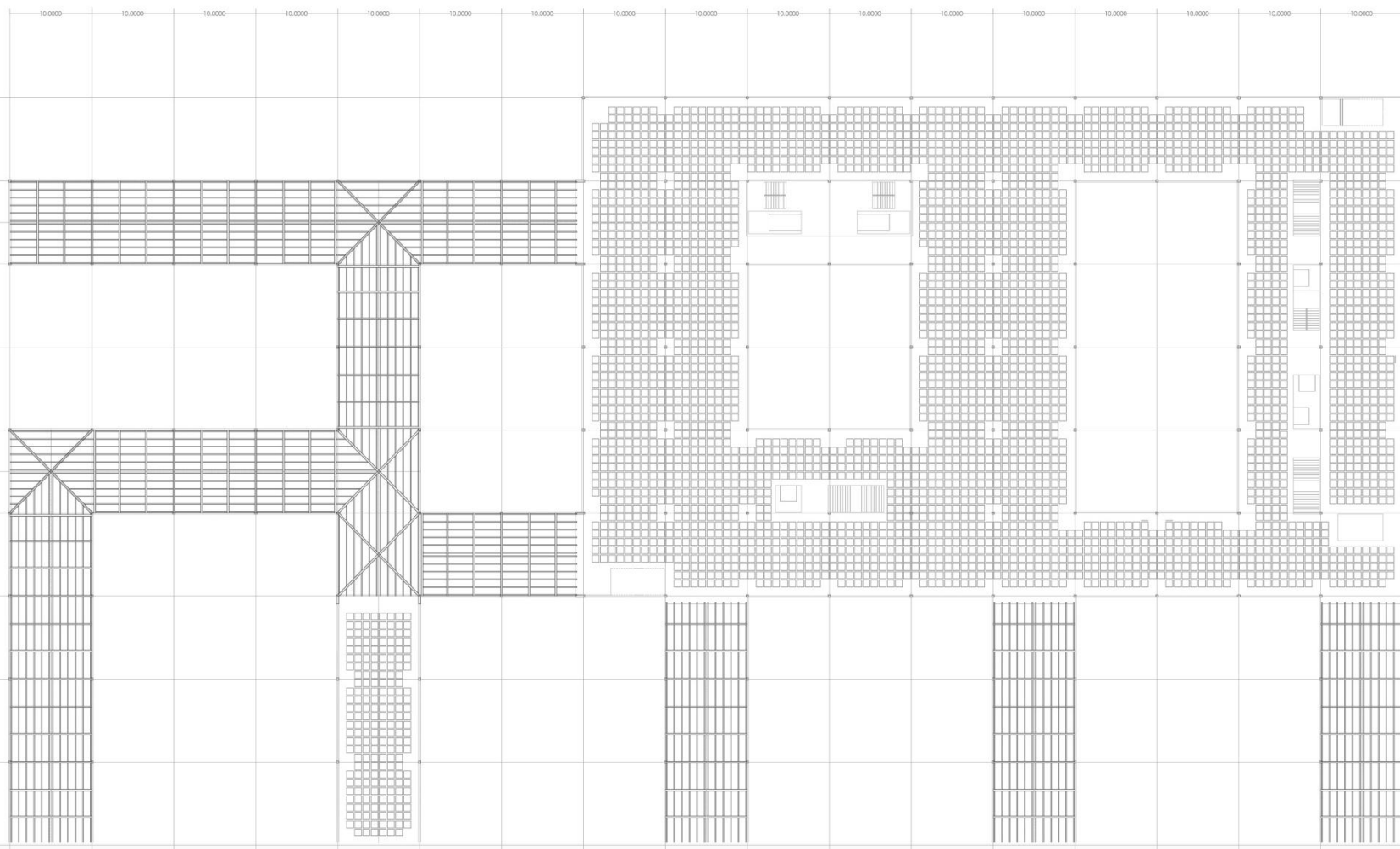


Handwritten notes or annotations next to the smaller sketch, possibly indicating a specific detail or measurement.



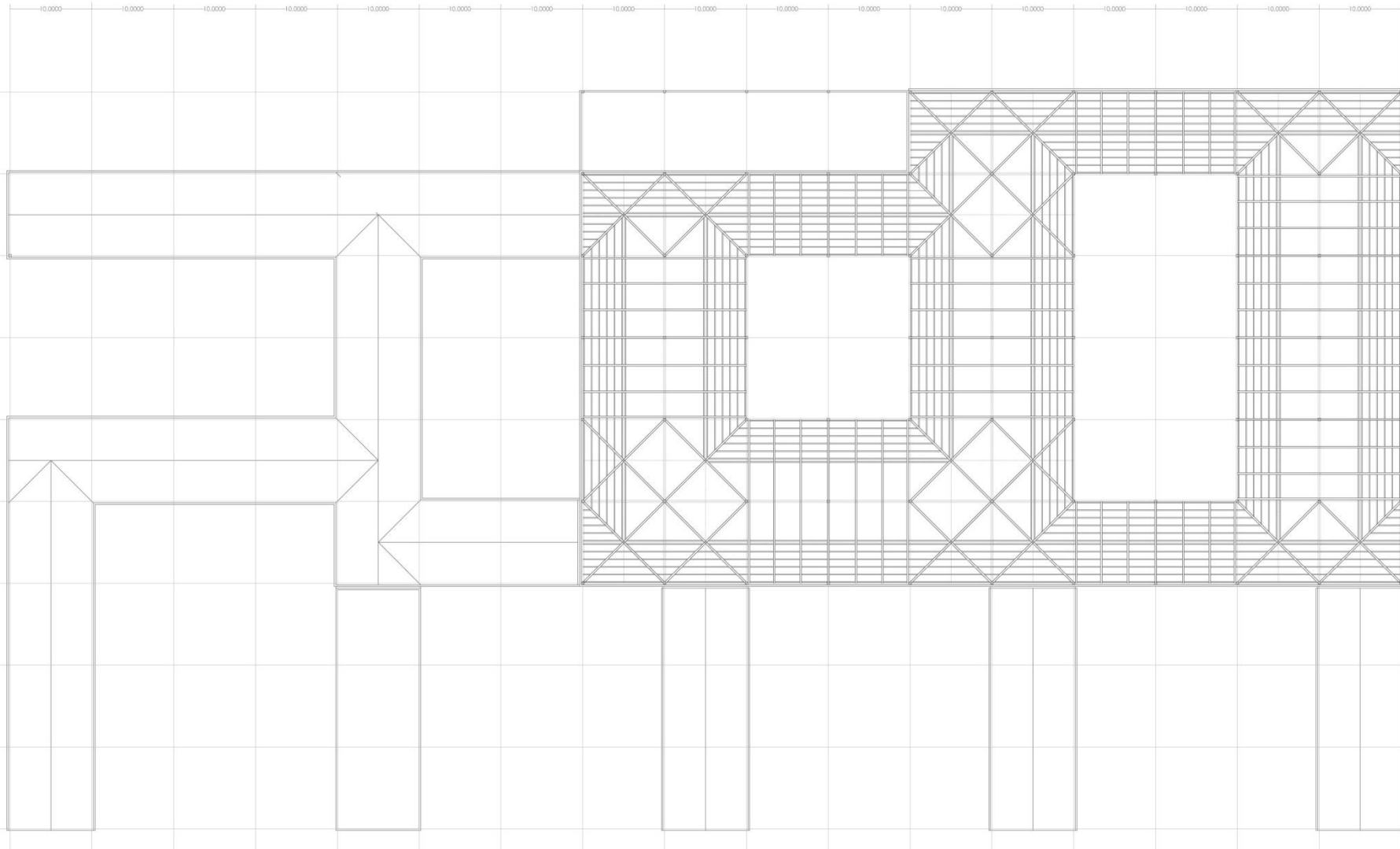


a0 a1 a2 a3 a4 a5 a6 a7 a8 a9 a10 a11 a12 a13 a14 a15 a16 a17

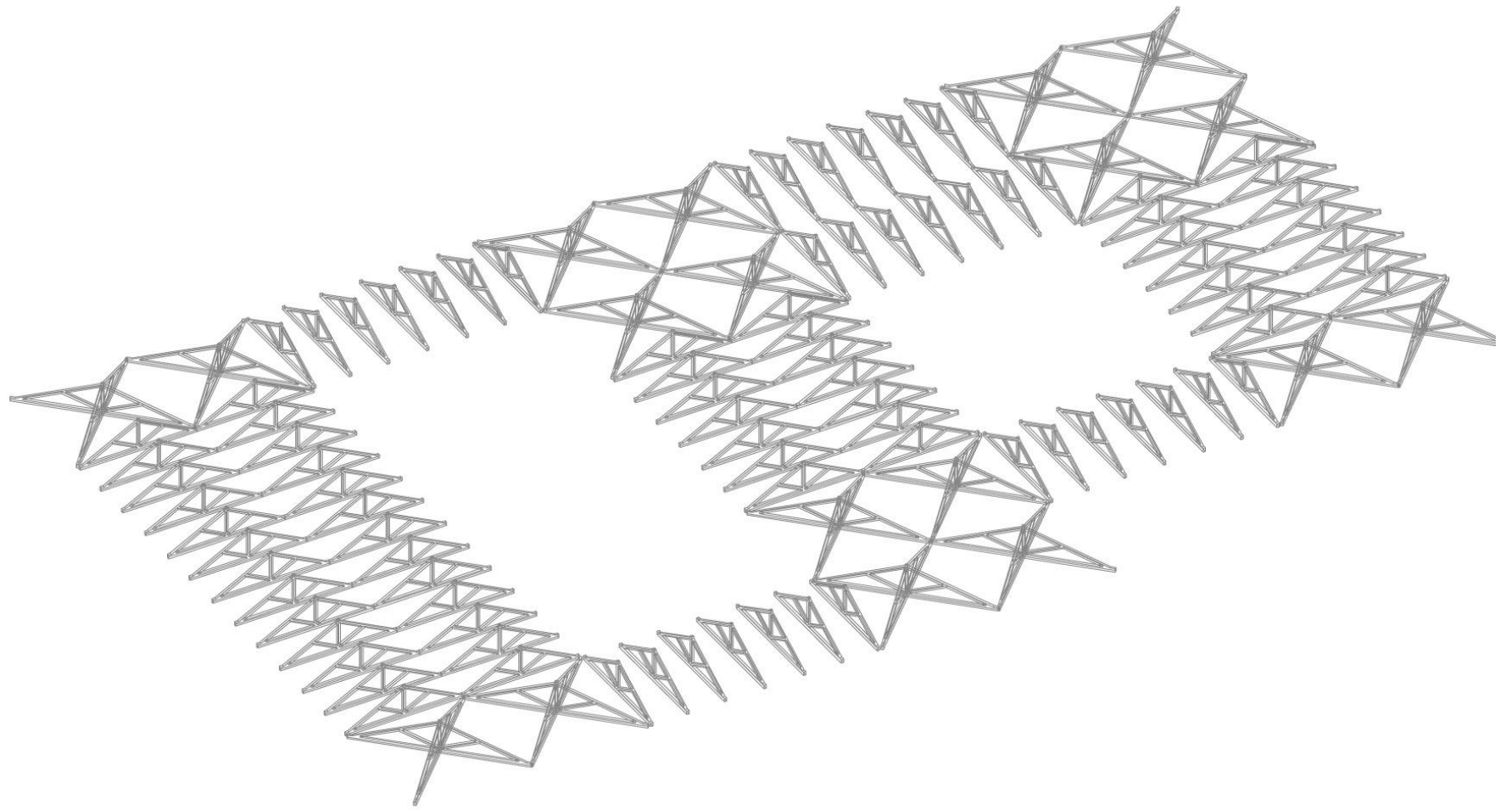


b9  
10,000  
b8  
10,000  
b7  
10,000  
b6  
10,000  
b5  
10,000  
b4  
10,000  
b3  
10,000  
b2  
10,000  
b1  
10,000  
b0

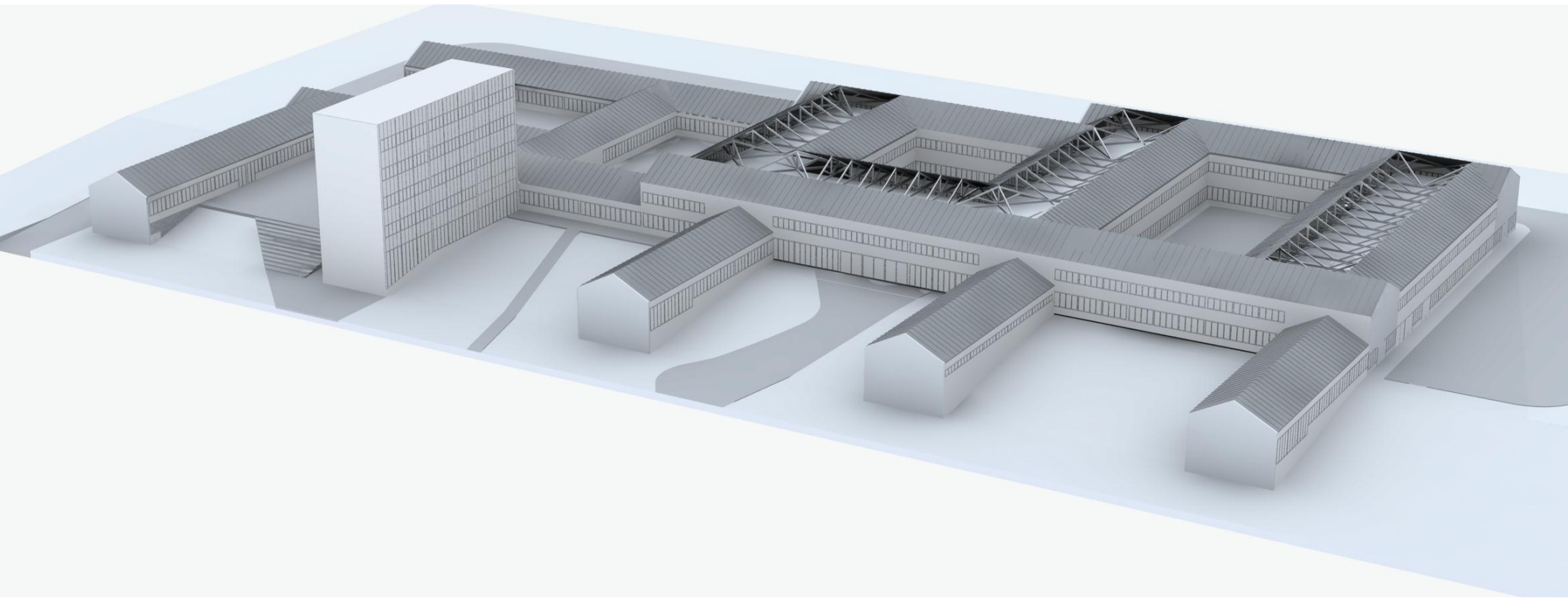
a0 a1 a2 a3 a4 a5 a6 a7 a8 a9 a10 a11 a12 a13 a14 a15 a16 a17



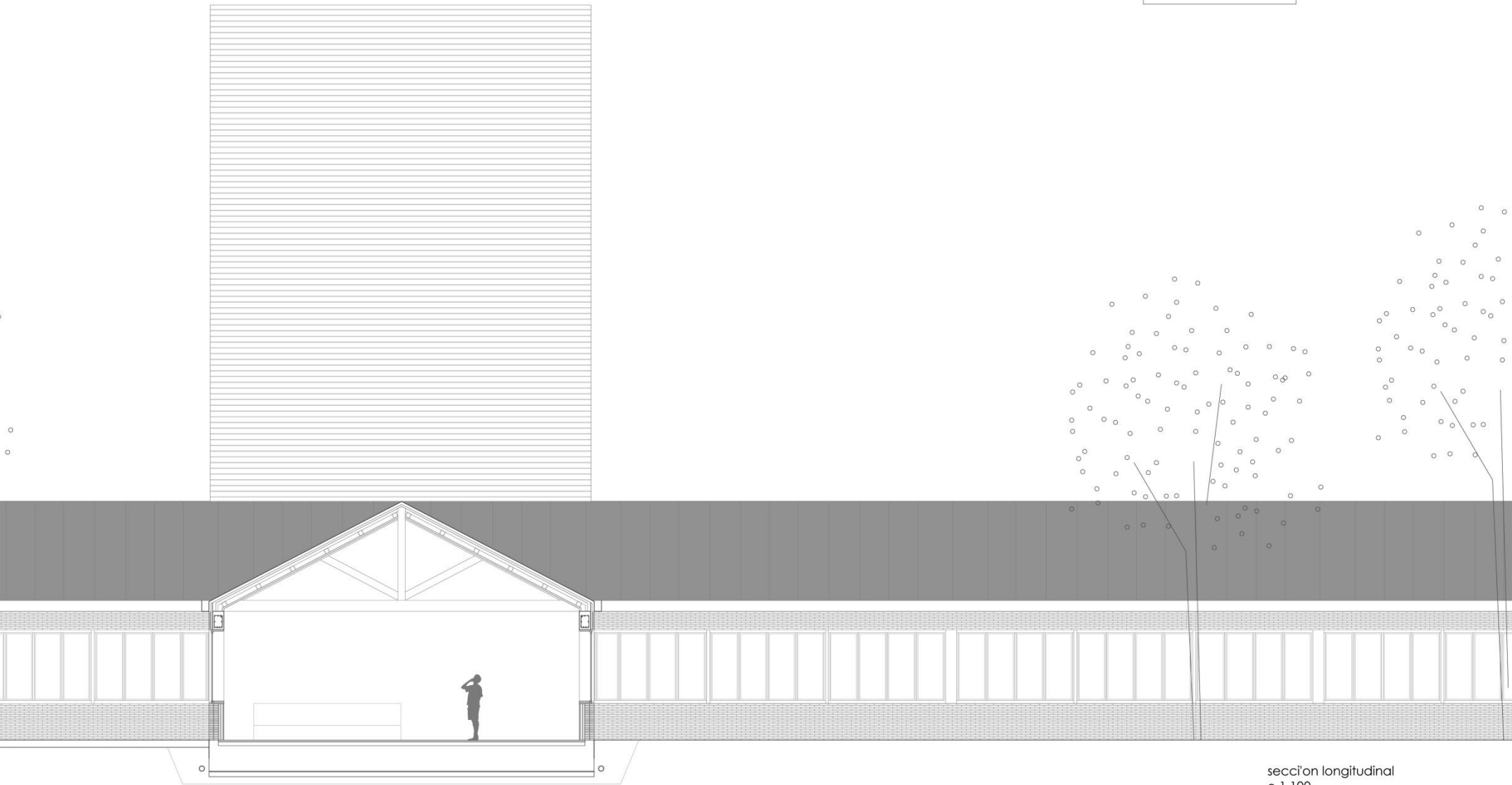
b9  
10,000  
b8  
10,000  
b7  
10,000  
b6  
10,000  
b5  
10,000  
b4  
10,000  
b3  
10,000  
b2  
10,000  
b1  
10,000  
b0



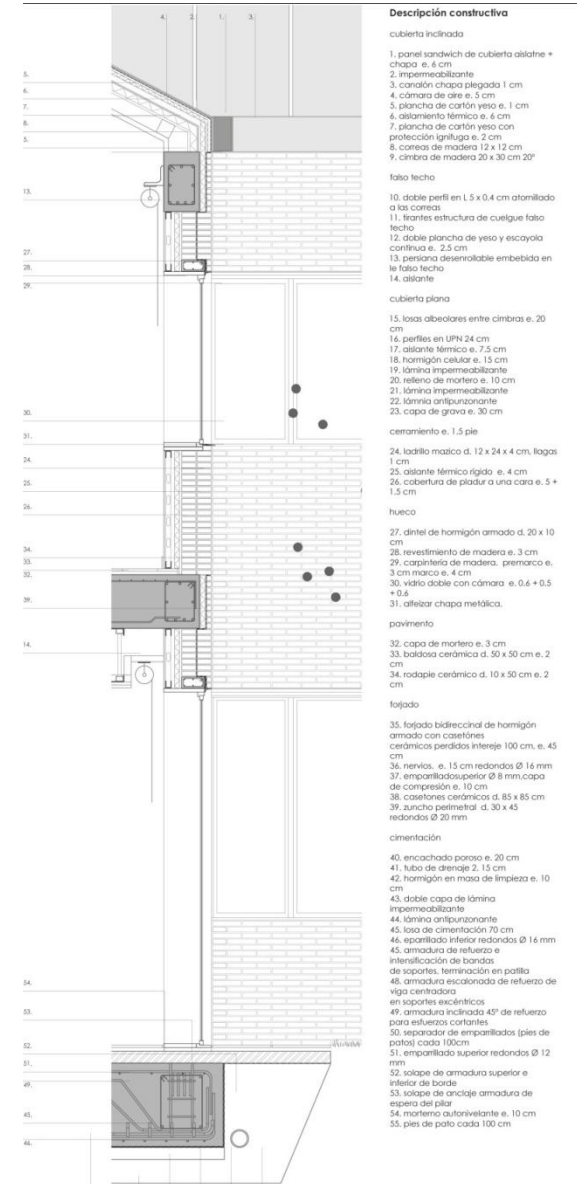


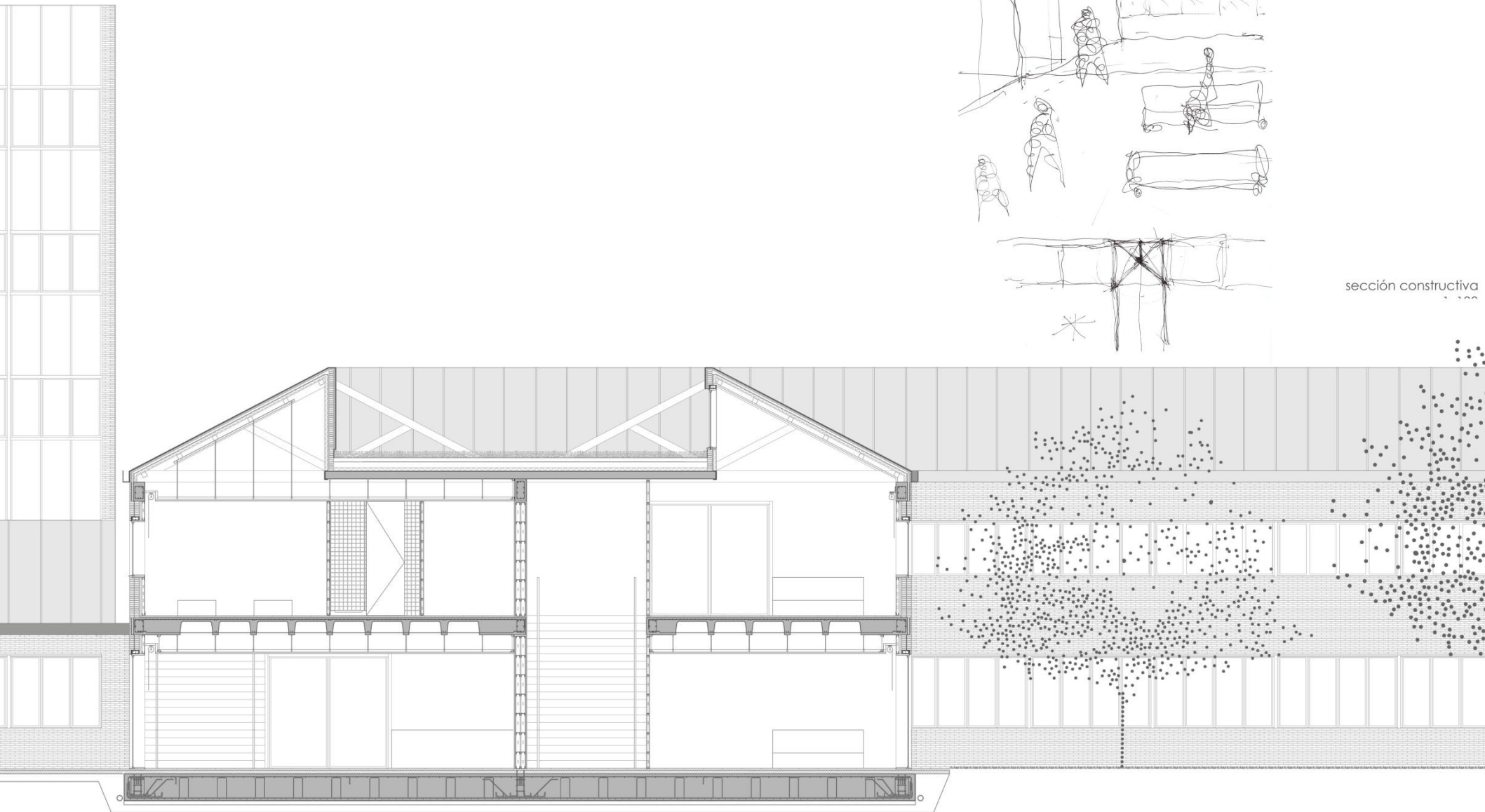






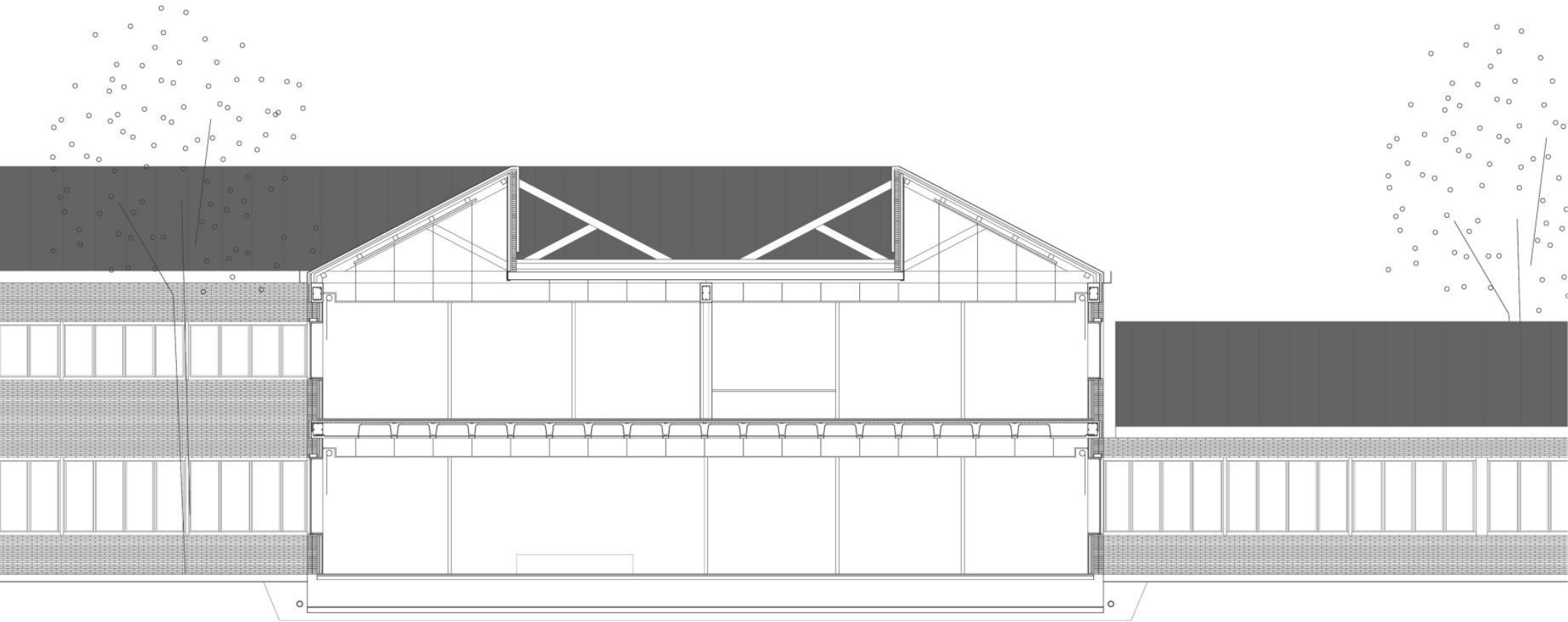
secci'on longitudinal  
e 1 100

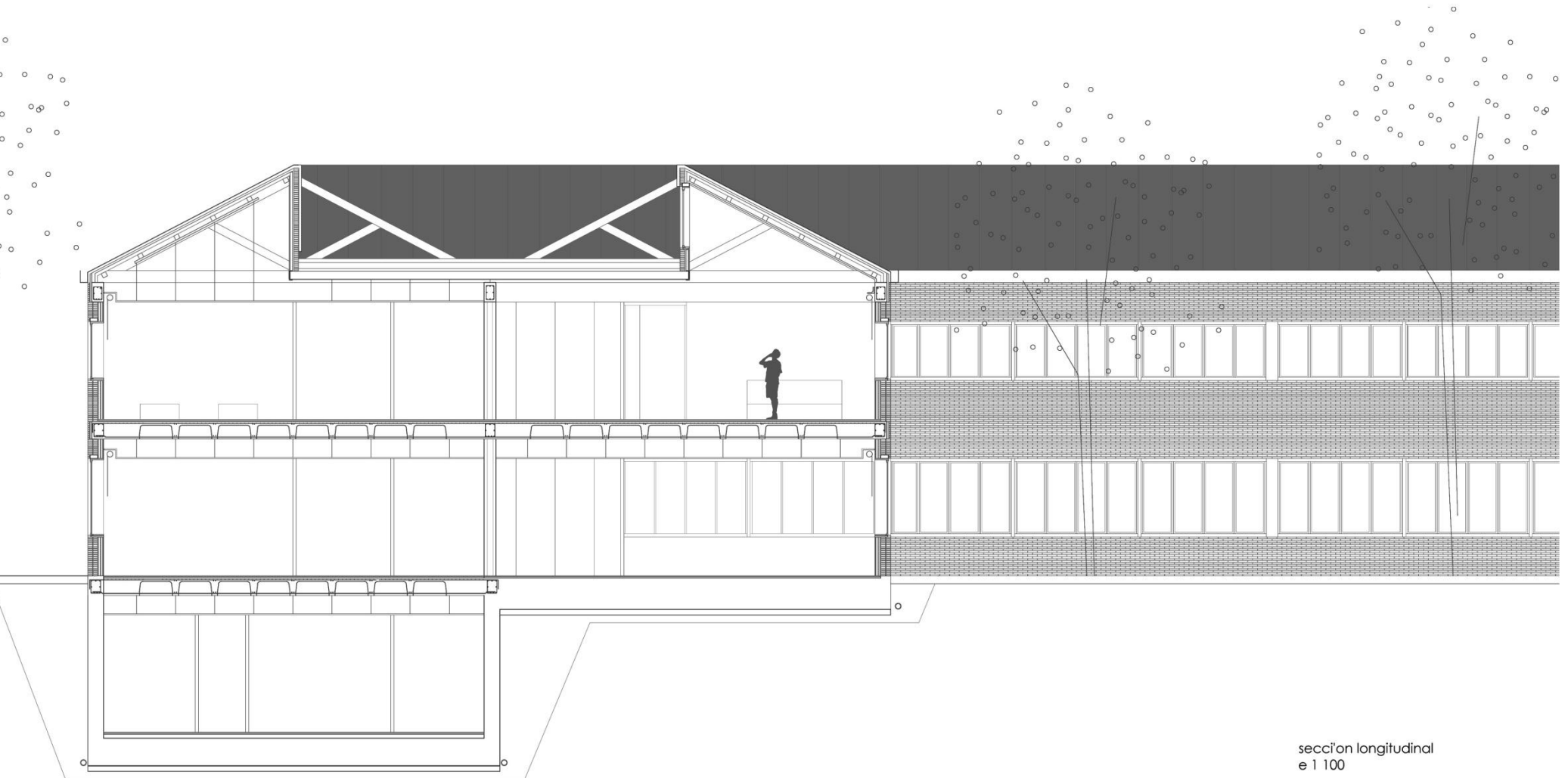




sección constructiva

1/100





sección longitudinal  
e 1/100

