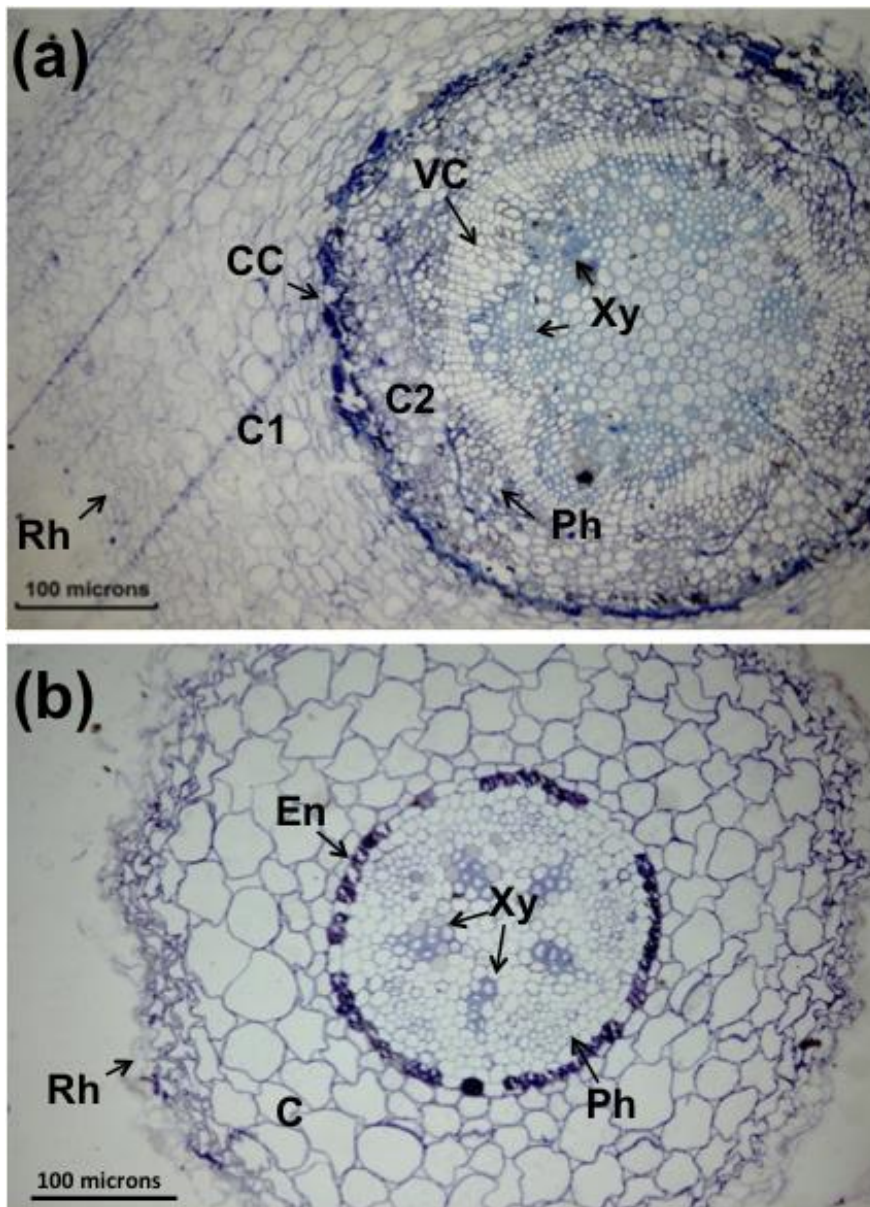


## Supporting Information



**Fig. 2 SI** Light microscopy sections of control *Quercus ilex* roots from the immersion inoculation method stained with toluidine blue. (a) Cross section of a main root showing the rhizodermis (Rh), primary cortex parenchyma (C1), cork cambium (CC), secondary cortex parenchyma (C2), vascular cambium (VC), phloem (Ph), and xylem (Xy). (b) Cross section of a secondary root showing the rhizodermis (Rh), cortex parenchyma (C) with many intercellular spaces, endodermis (En), phloem (Ph), and xylem (Xy). Bars = 100  $\mu\text{m}$