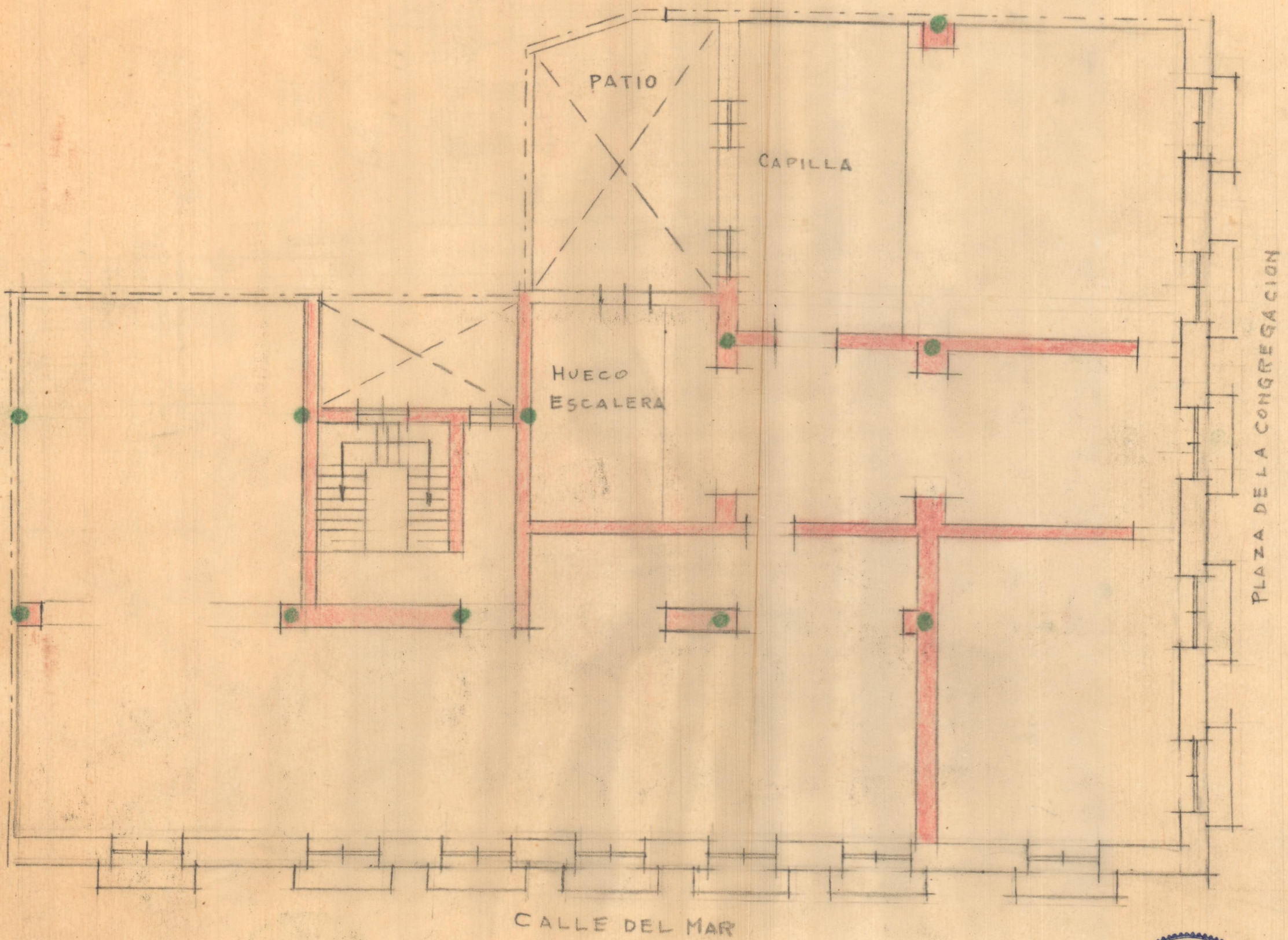


E s e. 1/100

- Congregación - $11'20 \times 19'30 = 216'16 m^2$
 - HAB - $15'90 \times 13'10 = 208'29 m^2$
 $424'45 m^2$
 Patio $4'40 \times 280 = 12'32 m^2$
 $412'13 m^2$

22-Diciembre-1941





E. 1:100

PLANTA PRINCIPAL

